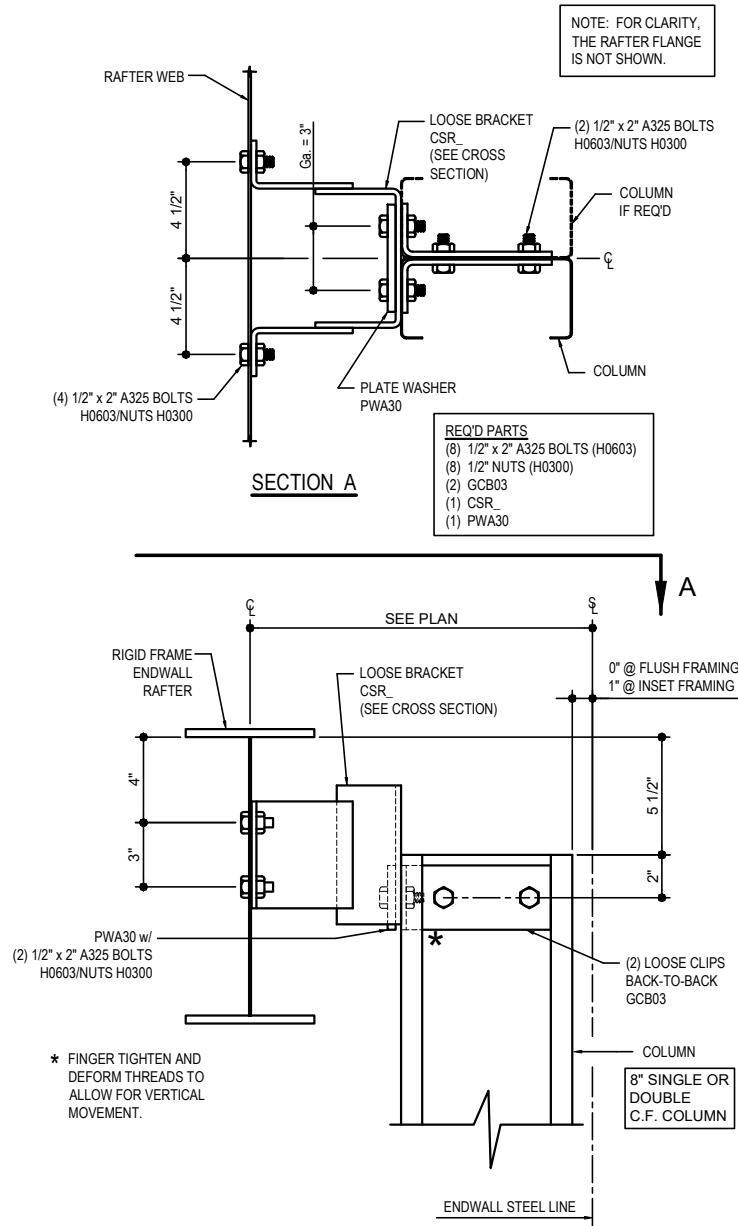


EXPANDABLE ENDWALL

- AD0010 - EW COLUMN TO EXP. EW RAFTER CONNECTION (8" C.F. COLUMN AT FLUSH/INSET GIRTS)
 - AD0070 - EW COLUMN TO EXP. EW RAFTER CONNECTION (BU/HR COLUMN AT FLUSH/INSET GIRTS)
 - AD0090 - EW COLUMN TO EXP. EW RAFTER CONNECTION (BU/HR COLUMN WITH COL EXT AT FLUSH/INSET GIRTS)
 - AD0091 - EW COLUMN TO EXP. EW RAFTER CONNECTION (BU/HR COLUMN WITH COL EXT AT FLUSH/INSET GIRTS)
 - AD0136 - EW COLUMN TO EXP. EW RAFTER CONNECTION (BU/HR COL AND BU/HR STUB INSIDE OF FRAME w/ SPACER)
 - AD0140 - EW COLUMN TO EXP. EW RAFTER CONNECTION (BU/HR COLUMN AND BU/HR STUB AT BYPASS GIRTS)
 - AD0141 - EW COLUMN TO EXP. EW RAFTER CONNECTION (BU/HR COLUMN AND BU/HR STUB AT BYPASS GIRTS)
 - AD0145 - EW COLUMN TO EXP. EW RAFTER CONNECTION (BU/HR COLUMN AND BU/HR STUB INSIDE OF FRAME)
-

AD0010 - EW COLUMN TO EXP. EW RAFTER CONNECTION (8" C.F. COLUMN AT FLUSH/INSET GIRTS)

[Download the DWG file by clicking here.](#)



ENDWALL COL TO EXP. EW RAFTER CONNECTION

8" COLD-FORMED COLUMN AT FLUSH/INSET GIRTS
REFERENCE ERECTOR NOTE FOR TYPICAL WASHER REQUIREMENTS

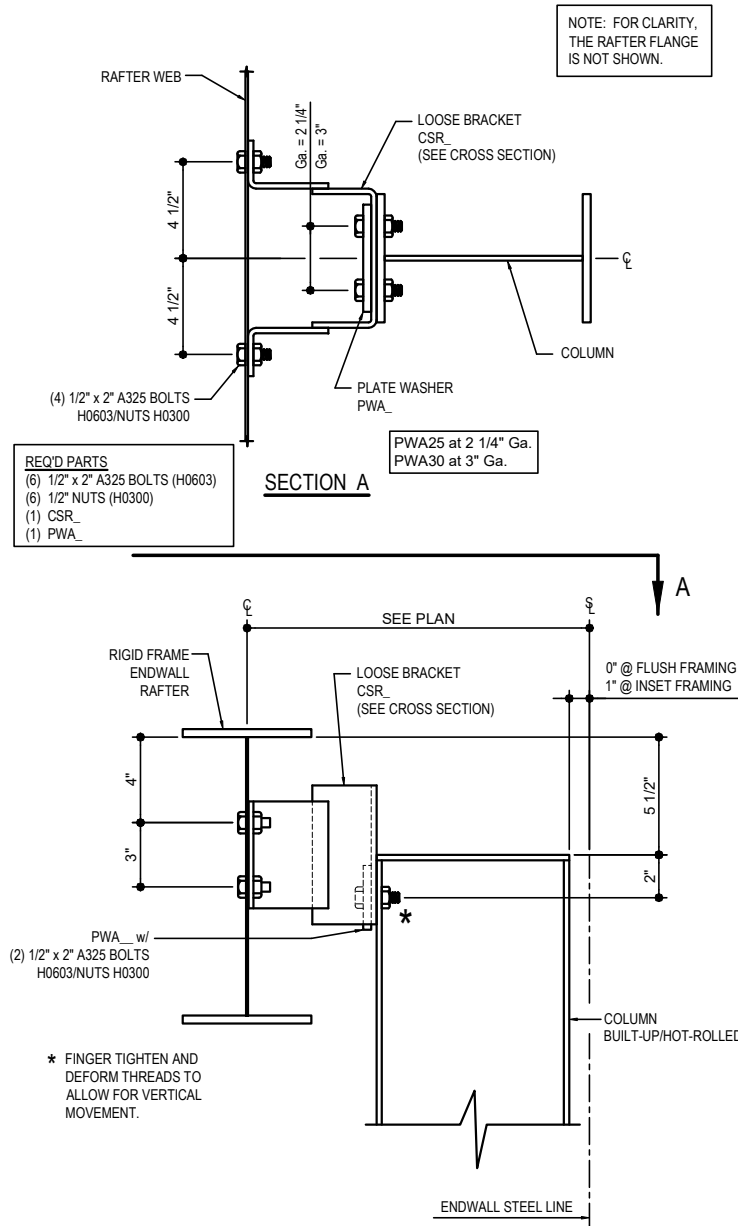
AD0010

Detailer Notes:

1) N/A

AD0070 - EW COLUMN TO EXP. EW RAFTER CONNECTION (BU/HR COLUMN AT FLUSH/INSET GIRTS)

[Download the DWG file by clicking here.](#)



ENDWALL COL TO EXP. EW RAFTER CONNECTION

BUILT-UP/HOT-ROLLED COLUMN AT FLUSH/INSET GIRTS
REFERENCE ERECTOR NOTE FOR TYPICAL WASHER REQUIREMENTS

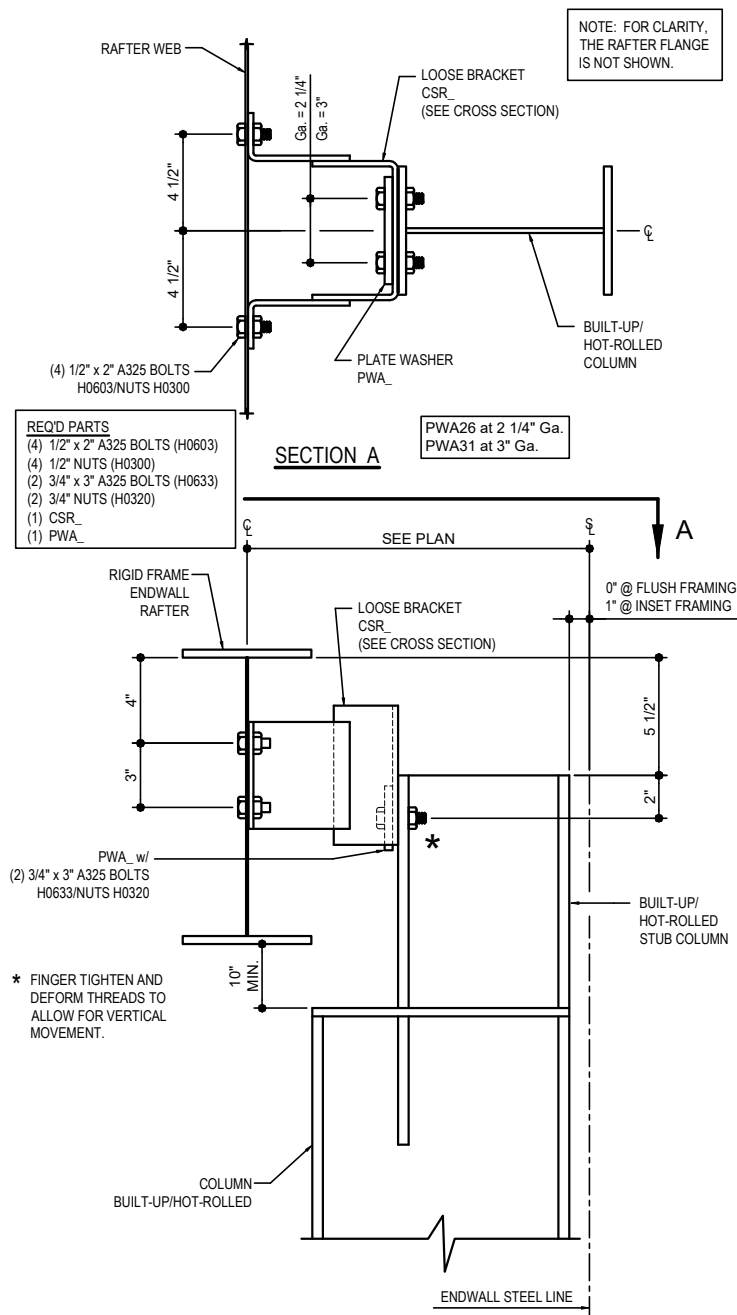
AD0070

Detailer Notes:

1) N/A

AD0090 - EW COLUMN TO EXP. EW RAFTER CONNECTION (BU/HR COLUMN WITH COL EXT AT FLUSH/INSET GIRTS)

[Download the DWG file by clicking here.](#)



ENDWALL COL TO EXP. EW RAFTER CONNECTION

10" DEEP (MIN.) BU/HR COLUMN AND COLUMN EXTENSION AT FLUSH/INSET GIRTS
REFERENCE ERECTOR NOTE FOR TYPICAL WASHER REQUIREMENTS

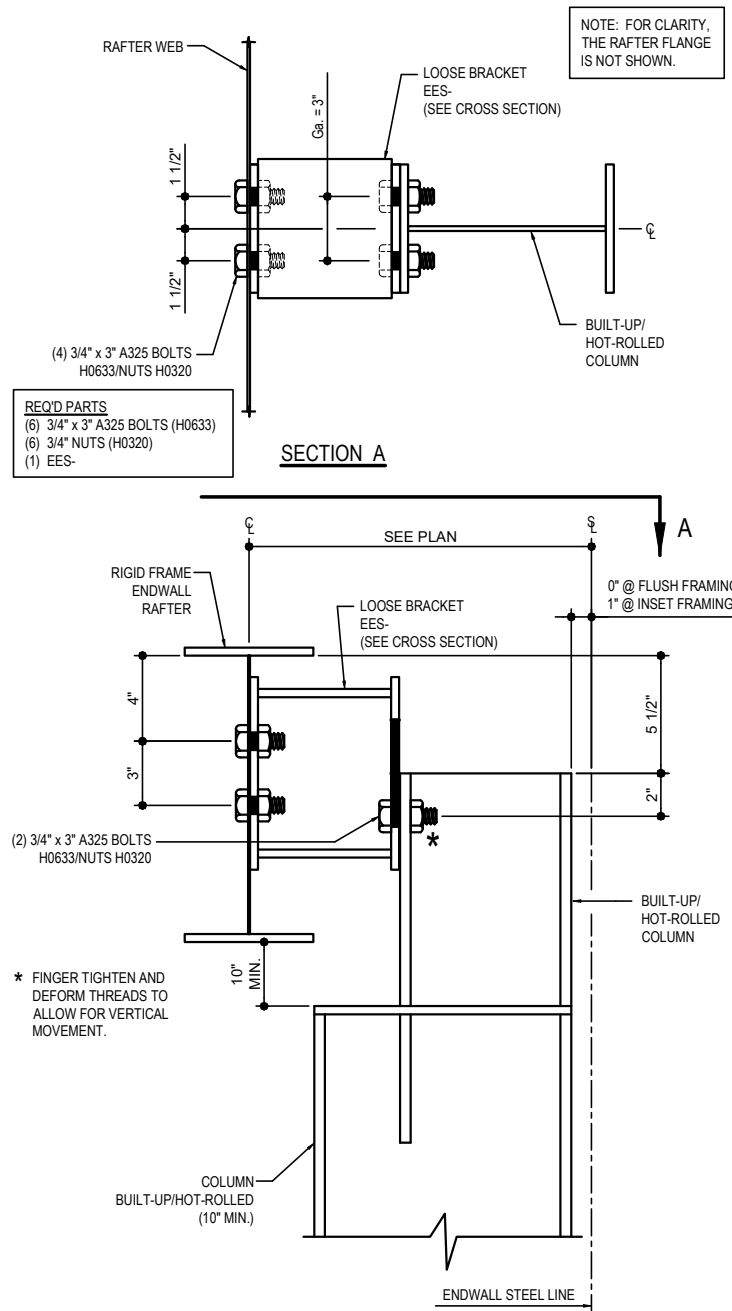
AD0090

Detailer Notes:

1) N/A

AD0091 - EW COLUMN TO EXP. EW RAFTER CONNECTION (BU/HR COLUMN WITH COL EXT AT FLUSH/INSET GIRTS)

[Download the DWG file by clicking here.](#)



ENDWALL COL TO EXP. EW RAFTER CONNECTION

10" DEEP (MIN.) BU/HR COLUMN AND COLUMN EXTENSION AT FLUSH/INSET GIRTS
REFERENCE ERECTOR NOTE FOR TYPICAL WASHER REQUIREMENTS

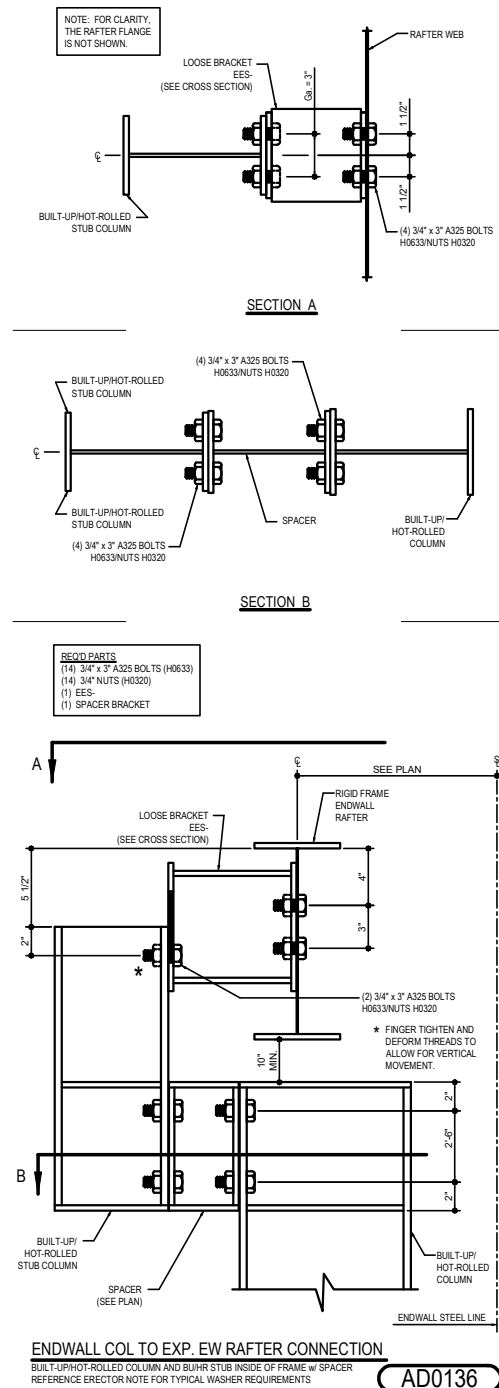
AD0091

Detailer Notes:

- 1) N/A

AD0136 - EW COLUMN TO EXP. EW RAFTER CONNECTION (BU/HR COL AND BU/HR STUB INSIDE OF FRAME w/ SPACER)

[Download the DWG file by clicking here.](#)

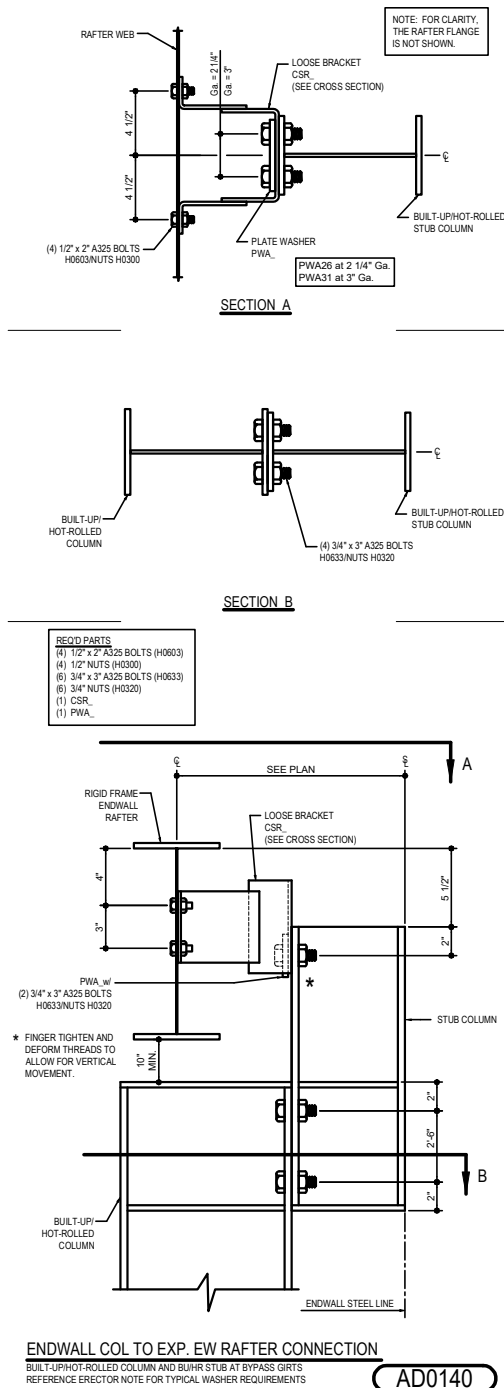


Detailer Notes:

1) N/A

AD0140 - EW COLUMN TO EXP. EW RAFTER CONNECTION (BU/HR COLUMN AND BU/HR STUB AT BYPASS GIRTS)

[Download the DWG file by clicking here.](#)

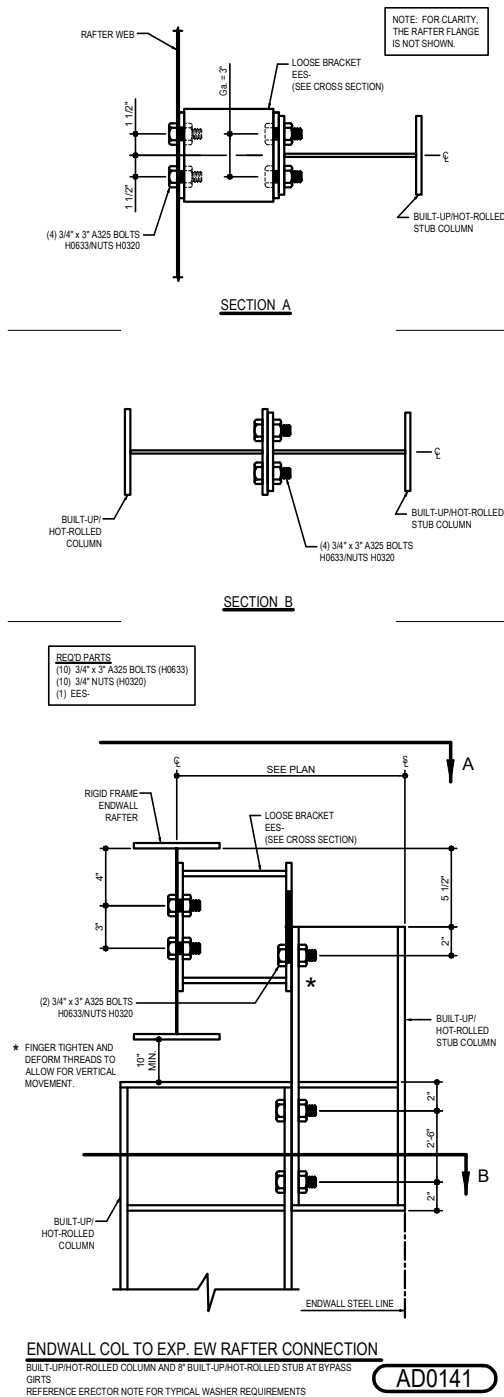


Detailer Notes:

- 1) N/A

AD0141 - EW COLUMN TO EXP. EW RAFTER CONNECTION (BU/HR COLUMN AND BU/HR STUB AT BYPASS GIRTS)

[Download the DWG file by clicking here.](#)

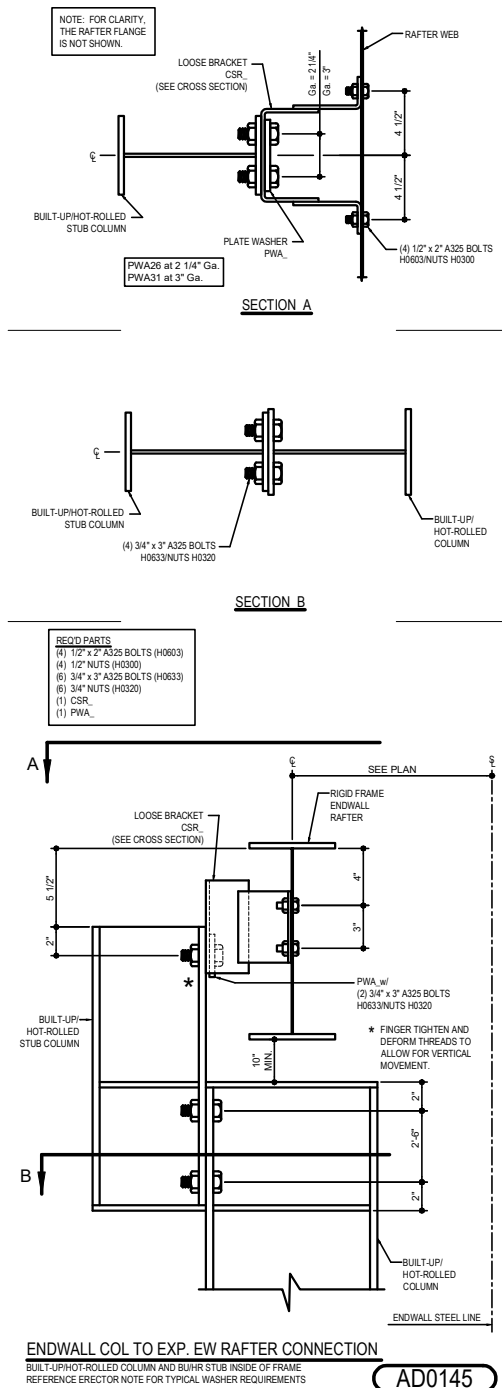


Detailer Notes:

1) N/A

AD0145 - EW COLUMN TO EXP. EW RAFTER CONNECTION (BU/HR COLUMN AND BU/HR STUB INSIDE OF FRAME)

[Download the DWG file by clicking here.](#)



Detailer Notes:

1) N/A