

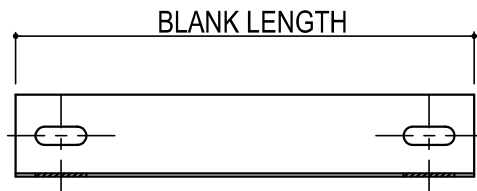
FLANGE BRACING

- AG0003 - FLANGE BRACE MARK NUMBERS
 - AG0005 - BUILDING EXPANSION NOTE
 - AG0010 - FLANGE BRACE AT PURLIN AND RAFTER
 - AG0014 - FLANGE BRACE AT EXP EW RAFTER & PURLIN
 - AG0020 - FLANGE BRACE AT RAFTER TO JOIST
 - AG0025 - FLANGE BRACE AT EXP EW RAFTER TO JOIST
 - AG0026 - ALL BOLTED FLANGE BRACE AT RAFTER TO JOIST
 - AG0027 - ALL BOLTED FLANGE BRACE AT EXP EW RAFTER TO JOIST
 - AG0030 - FLANGE BRACE AT COLUMN & GIRT
 - AG0034 - FLANGE BRACE AT EXP EW COLUMN & GIRT
 - AG0040 - FLANGE BRACE AT COLUMN & MASONARY WALL
 - AG0050 - FLANGE BRACE AT COLUMN & CEE GIRT
 - AG0060 - FLANGE BRACE AT C.F. COLUMN & GIRT
 - AG0070 - FLANGE BRACE AT C.F. COLUMN & MAS WALL
 - AG0080 - FLANGE BRACE AT C.F. RAFTER & PURLIN
 - AG0090 - FLANGE BRACE AT CF COLUMN & CEE GIRT
 - AG0100 - FLANGE BRACE AT CF COLUMN & HR CEE
 - AG0105 - FLANGE BRACE WITH BASKET INSULATION OR LINER AT COLUMN
 - AG0110 - FLANGE BRACE WITH BASKET INSUL OR LINER AT RAFTER
 - AG0140 - FLANGE BRACE WITH BASKET INSUL OR LINER @ EW RAFTER
 - AG0160 - FLANGE BRACE WITH BASKET INSUL OR LINER @ EXP EW COL
 - AG0170 - FLANGE BRACE AT CF COLUMN & GIRT W/ LINER
 - AG0180 - FLANGE BRACE AT CF RAFTER & PURLIN W/ LINER
 - AG0210 - FLANGE BRACE PURLIN & HIP/VALLEY RAFTER
-

AG0003 - FLANGE BRACE MARK NUMBERS

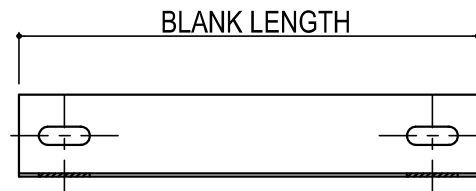
[Download the DWG file by clicking here.](#)

FBC  INDICATES LENGTH OF FLANGE BRACE IN INCHES



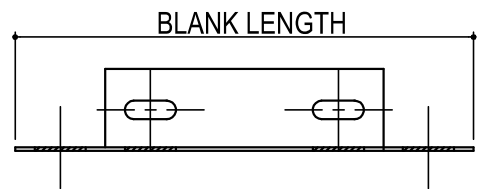
FBH- COUNTER (1-999)

SPECIAL LENGTH FLANGE BRACE



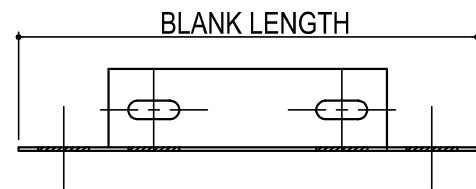
FBE__ COUNTER (01-07)

COPED FLANGE BRACE



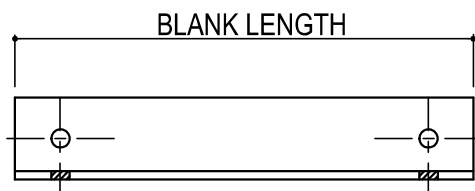
FBJ- COUNTER (1-999)

SPECIAL LENGTH COPED FLANGE BRACE

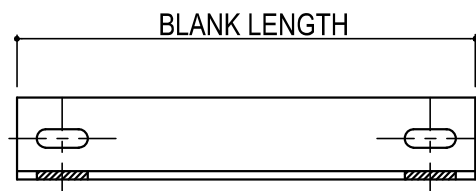


FBF- COUNTER (1-999)

3" X 3" 1/4" BRACE ANGLE



FBK  INDICATES LENGTH OF FLANGE BRACE IN INCHES



FLANGE BRACE MARK NUMBERS

AG0003

Detailer Notes:

- 1) THIS DETAIL SHOULD BE PLACED ON ALL JOBS THAT HAVE FLANGE BRACING.

AG0005 - BUILDING EXPANSION NOTE

[Download the DWG file by clicking here.](#)

WARNING: IMPORTANT ERECTION NOTE WARNING

AT THIS TIME OF BUILDING EXPANSION, IT IS IMPERATIVE THAT THE MAIN FRAME
ENDWALL FLANGE BRACING REQUIREMENTS (FOR THE EXISTING BUILDING) ARE
COMPLETED AS NOTED ON YOUR EXISTING BUILDING ERECTION DRAWING SET.

PLEASE REVIEW YOUR EXISTING BUILDING ERECTION DRAWING SET FOR SPECIFIC
FLANGE BRACE LOCATIONS REQUIRING INSTALLATION ON BOTH SIDES OF THE EXISTING
FRAME AT TIME OF EXPANSION AND INSTALL THESE ADDITIONAL FLANGE BRACES NOW!

IF YOU ARE UNABLE TO LOCATE THE ADDITIONAL FLANGE BRACING MATERIAL SENT
WITH THE EXISTING NBS BUILDING ORDER, IT IS YOUR RESPONSIBILITY TO ACQUIRE THE
FLANGE BRACE MATERIAL AND INSTALL AT THIS TIME. IT IS VITAL TO THE STRUCTURAL
INTEGRITY OF THE EXISTING MAIN FRAME THAT THIS FLANGE BRACE MATERIAL IS
INSTALLED.

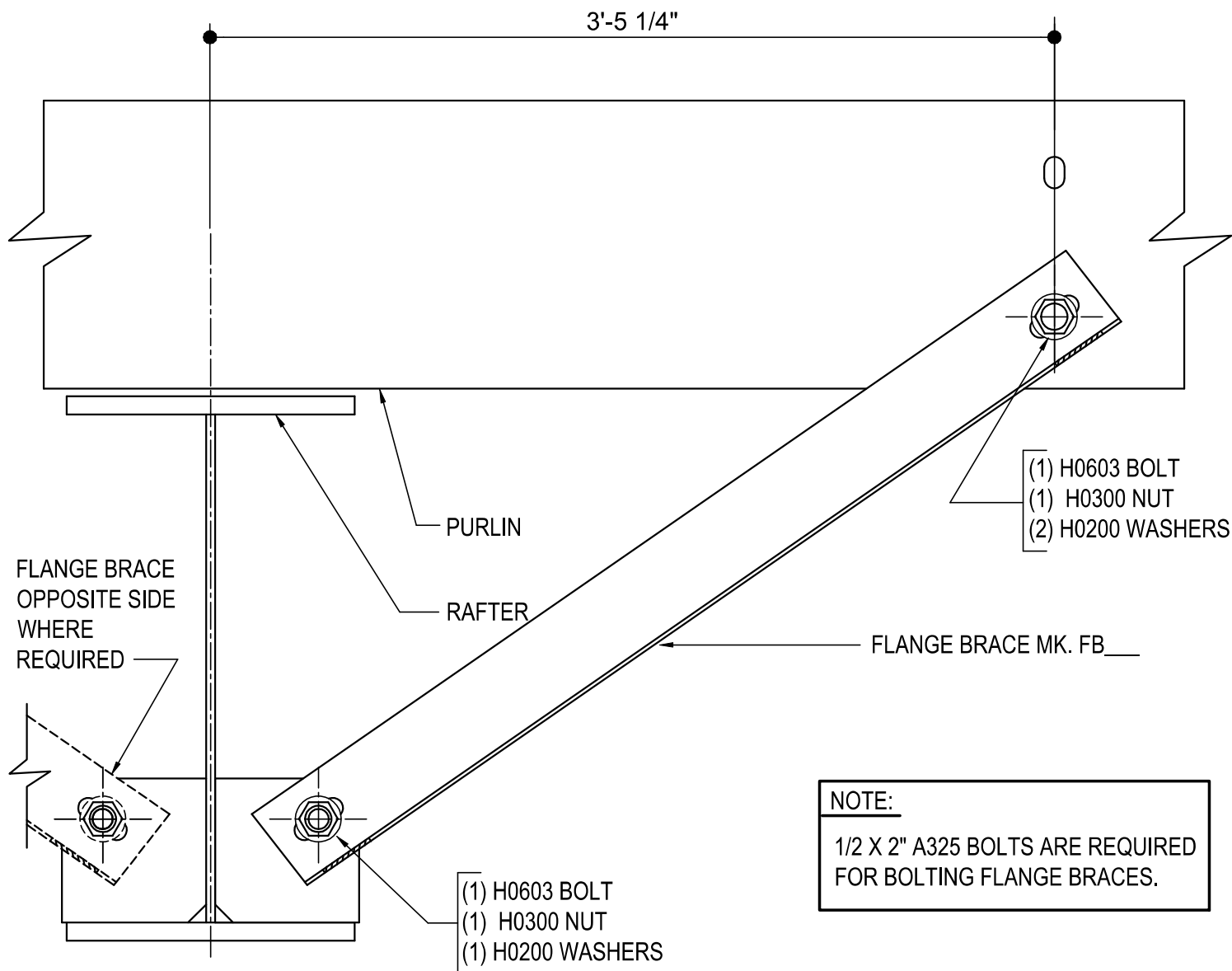
AG0005

Detailer Notes:

- 1) THIS DETAIL IS INTENDED TO BE PLACED ON THE ROOF FRAMING PLAN WHEN EXPANDING ON TO AN
EXISTING NBG EXPANDABLE ENDWALL.

AG0010 - FLANGE BRACE AT PURLIN AND RAFTER

[Download the DWG file by clicking here.](#)



FLANGE BRACE AT PURLIN & RAFTER

SEE PLANS AND ELEVATIONS FOR FLANGE BRACE LOCATIONS, PART MARKS & QUANTITIES.

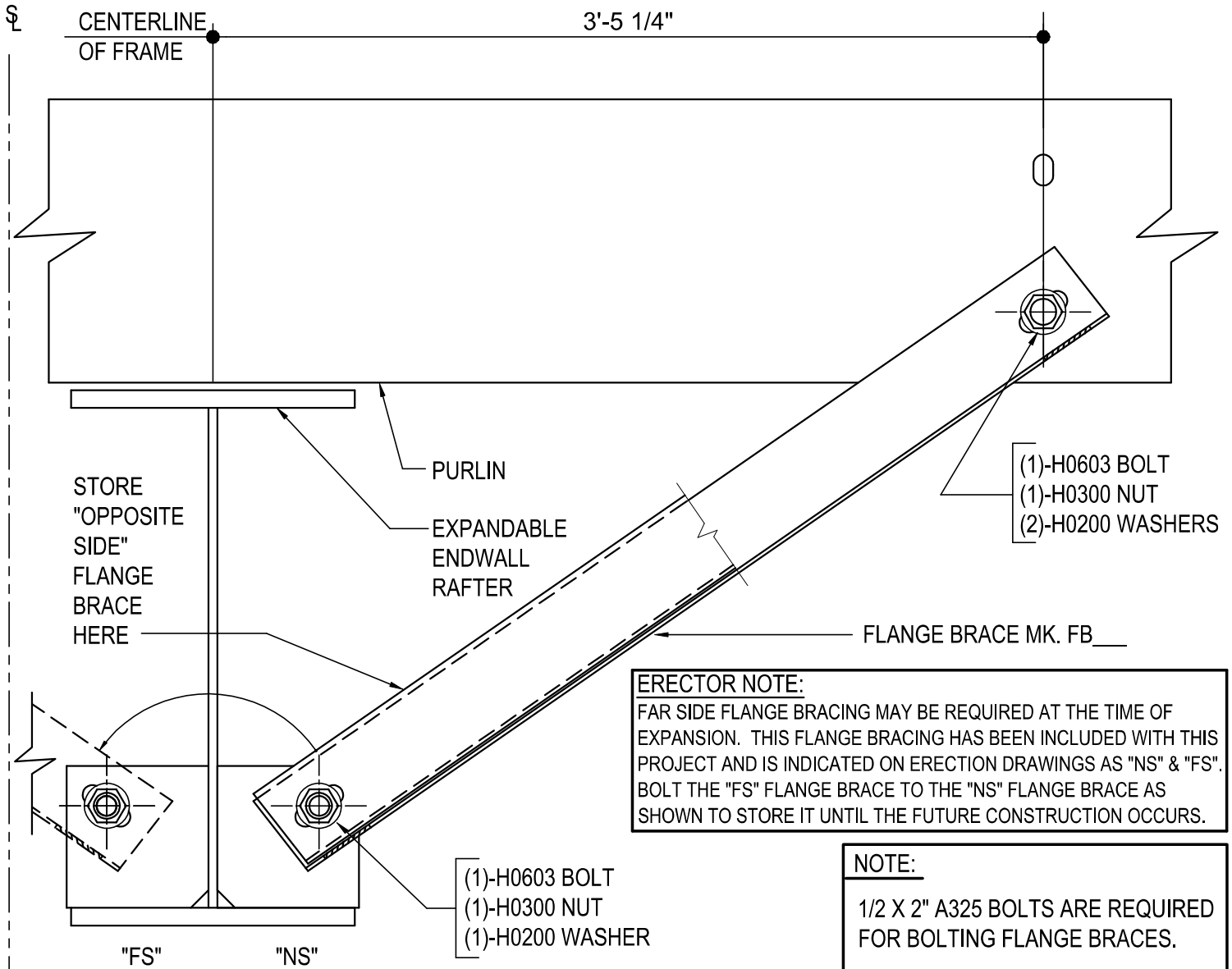
AG0010

Detailer Notes:

1) N/A

AG0014 - FLANGE BRACE AT EXP EW RAFTER & PURLIN

[Download the DWG file by clicking here.](#)



FLANGE BRACE AT EXPANDABLE ENDWALL RAFTER & PURLIN

SEE PLANS AND ELEVATIONS FOR FLANGE BRACE PART MARKS

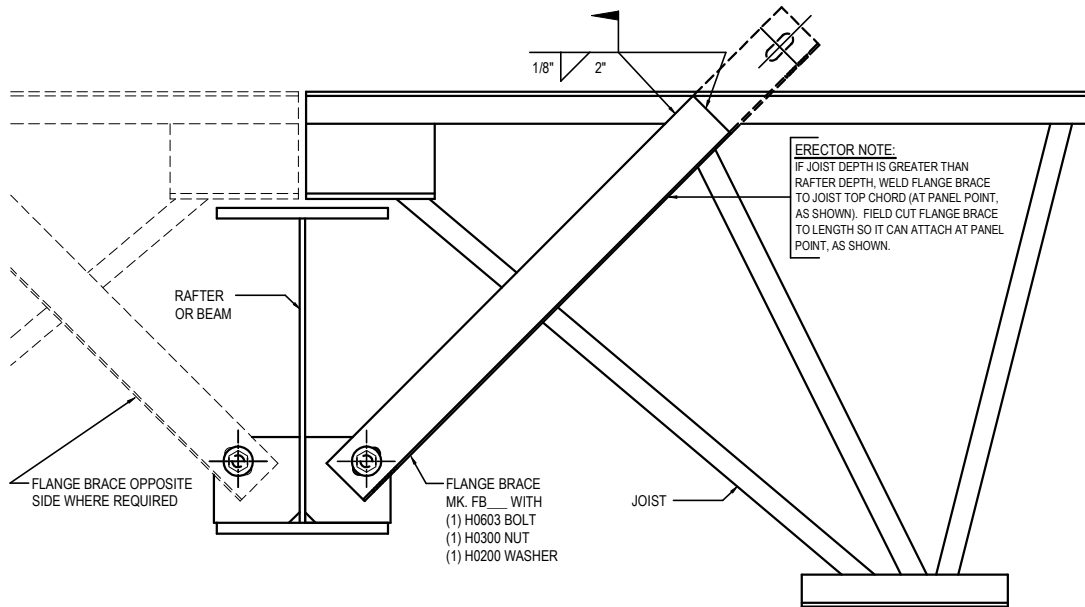
AG0014

Detailer Notes:

1) N/A

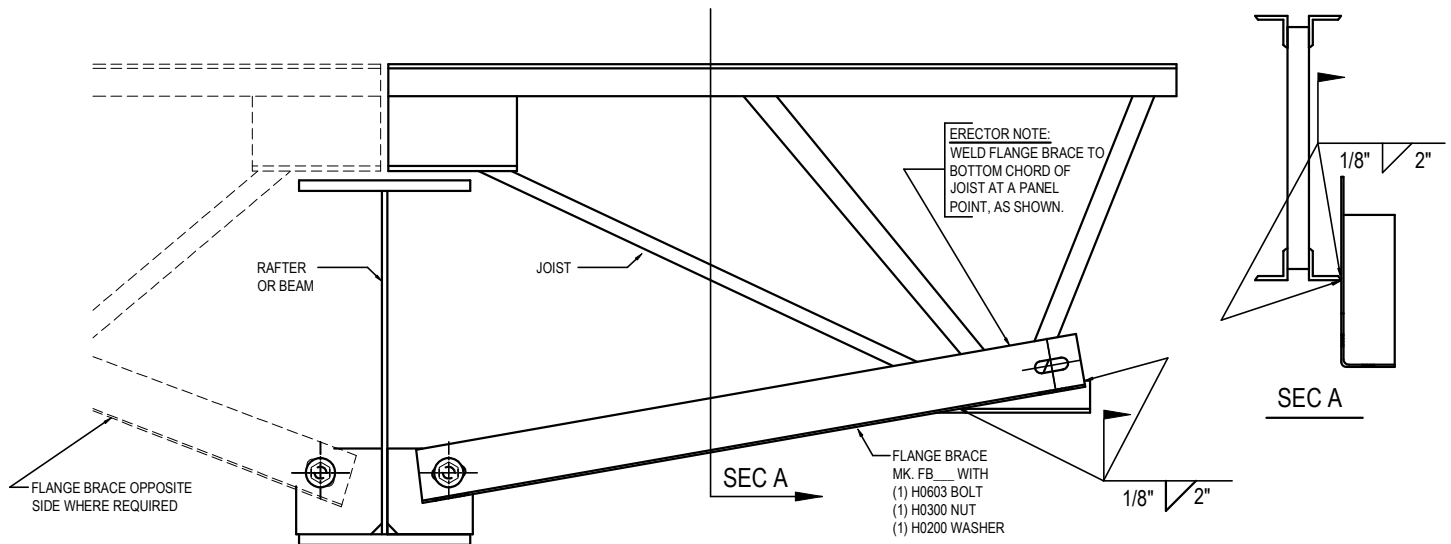
AG0020 - FLANGE BRACE AT RAFTER TO JOIST

[Download the DWG file by clicking here.](#)



FLANGE BRACE - JOIST DEPTH GREATER THAN RAFTER DEPTH

ALL FLANGE BRACE CONNECTIONS REQUIRE 1/2" x 2" A325 BOLTS UNLESS NOTED OTHERWISE
SEE PLANS AND ELEVATIONS FOR FLANGE BRACE LOCATIONS, PART MARKS & QUANTITIES



FLANGE BRACE - RAFTER DEPTH GREATER THAN JOIST DEPTH

ALL FLANGE BRACE CONNECTIONS REQUIRE 1/2" x 2" A325 BOLTS UNLESS NOTED OTHERWISE
SEE PLANS AND ELEVATIONS FOR FLANGE BRACE LOCATIONS, PART MARKS & QUANTITIES

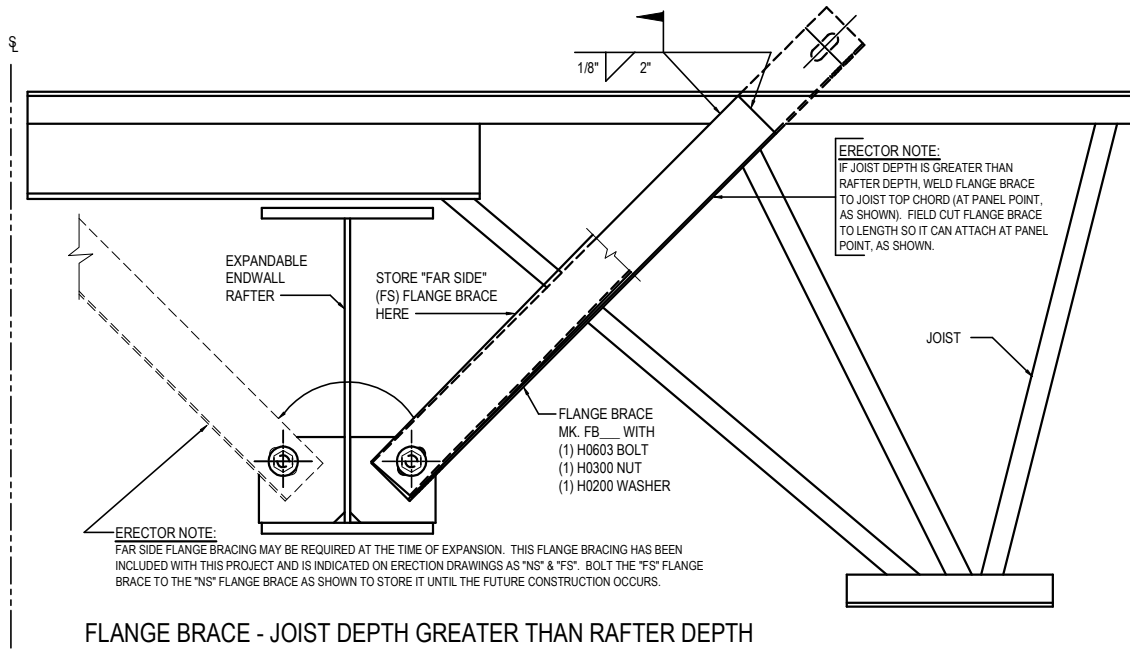
AG0020

Detailer Notes:

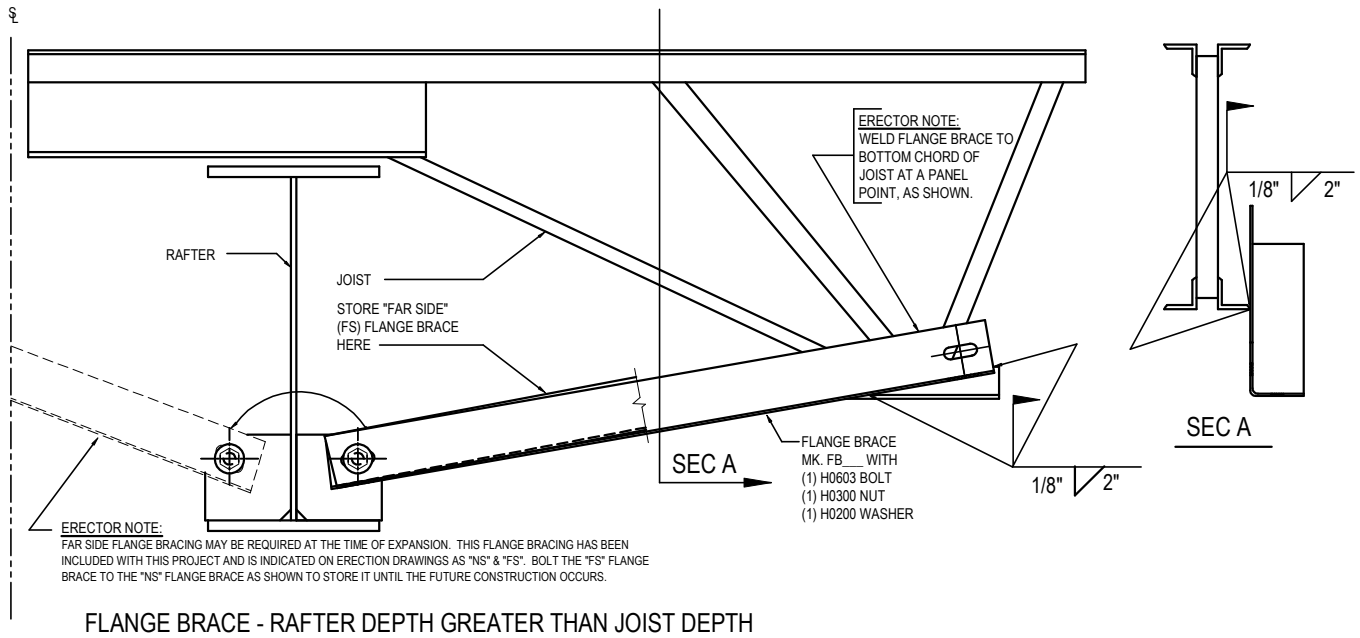
- 1) N/A

AG0025 - FLANGE BRACE AT EXP EW RAFTER TO JOIST

[Download the DWG file by clicking here.](#)



ALL FLANGE BRACE CONNECTIONS REQUIRE 1/2" x 2" A325 BOLTS UNLESS NOTED OTHERWISE
SEE PLANS AND ELEVATIONS FOR FLANGE BRACE LOCATIONS, PART MARKS & QUANTITIES



ALL FLANGE BRACE CONNECTIONS REQUIRE 1/2" x 2" A325 BOLTS UNLESS NOTED OTHERWISE
SEE PLANS AND ELEVATIONS FOR FLANGE BRACE LOCATIONS, PART MARKS & QUANTITIES

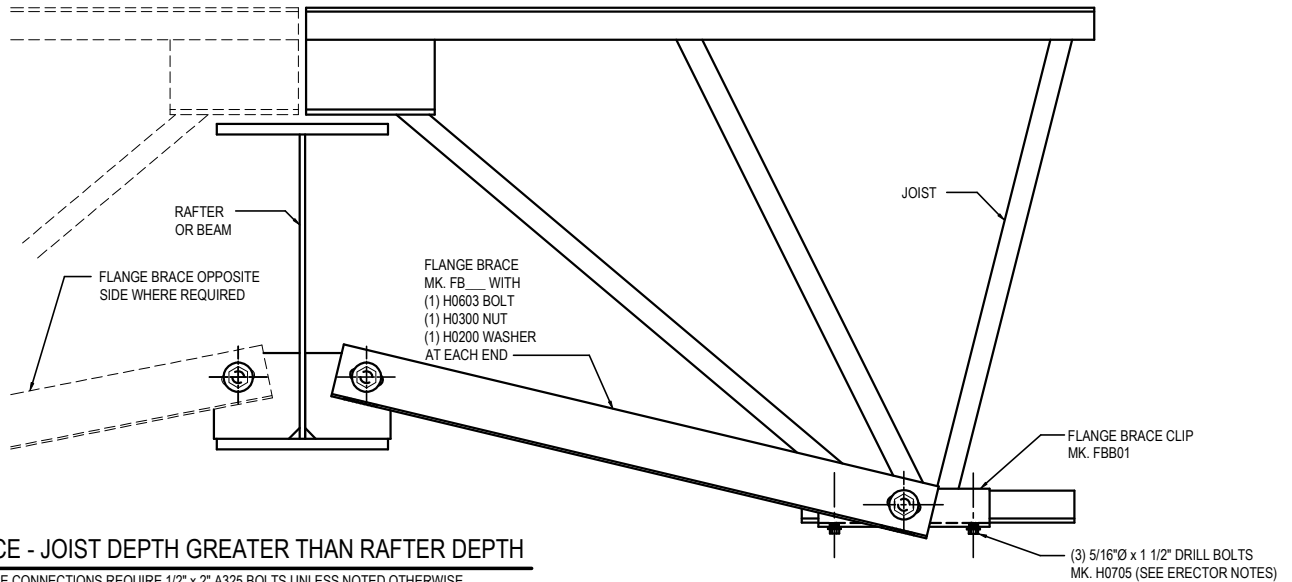
AG0025

Detailer Notes:

1) N/A

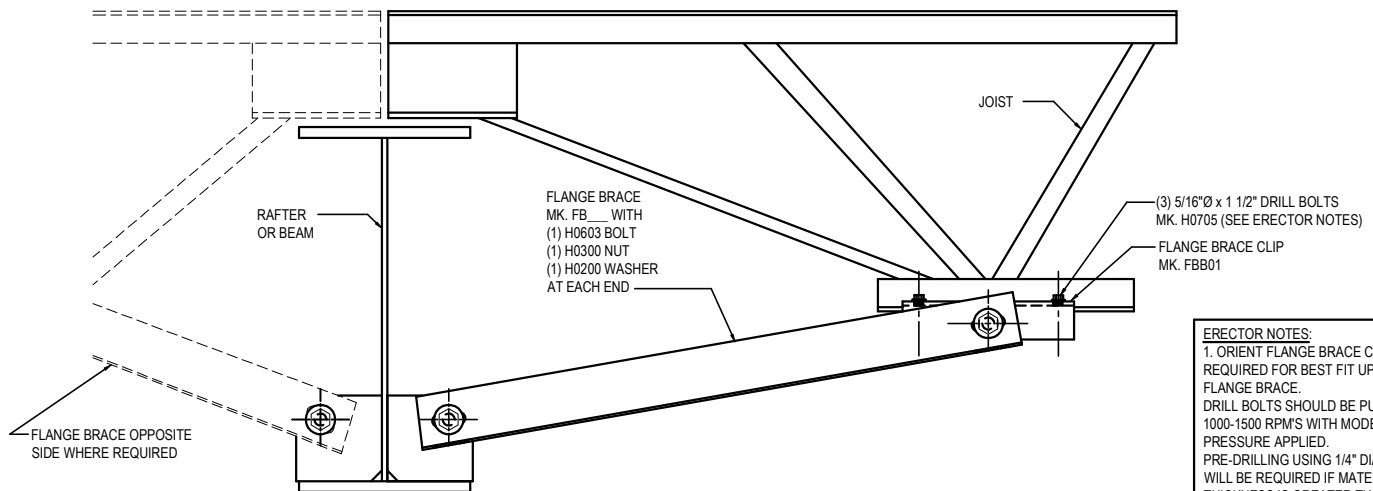
AG0026 - ALL BOLTED FLANGE BRACE AT RAFTER TO JOIST

[Download the DWG file by clicking here.](#)



FLANGE BRACE - JOIST DEPTH GREATER THAN RAFTER DEPTH

ALL FLANGE BRACE CONNECTIONS REQUIRE 1/2" x 2" A325 BOLTS UNLESS NOTED OTHERWISE
SEE PLANS AND ELEVATIONS FOR FLANGE BRACE LOCATIONS, PART MARKS & QUANTITIES



FLANGE BRACE - RAFTER DEPTH GREATER THAN JOIST DEPTH

ALL FLANGE BRACE CONNECTIONS REQUIRE 1/2" x 2" A325 BOLTS UNLESS NOTED OTHERWISE
SEE PLANS AND ELEVATIONS FOR FLANGE BRACE LOCATIONS, PART MARKS & QUANTITIES

ERECTOR NOTES:
1. ORIENT FLANGE BRACE CLIP AS REQUIRED FOR BEST FIT UP OF FLANGE BRACE.
DRILL BOLTS SHOULD BE PUT IN AT 1000-1500 RPM'S WITH MODERATE PRESSURE APPLIED.
PRE-DRILLING USING 1/4" DIA. HOLES WILL BE REQUIRED IF MATERIAL THICKNESS IS GREATER THAN 1/4".
2. FLANGE BRACE MUST BE LOCATED AT A PANEL POINT AS SHOWN.

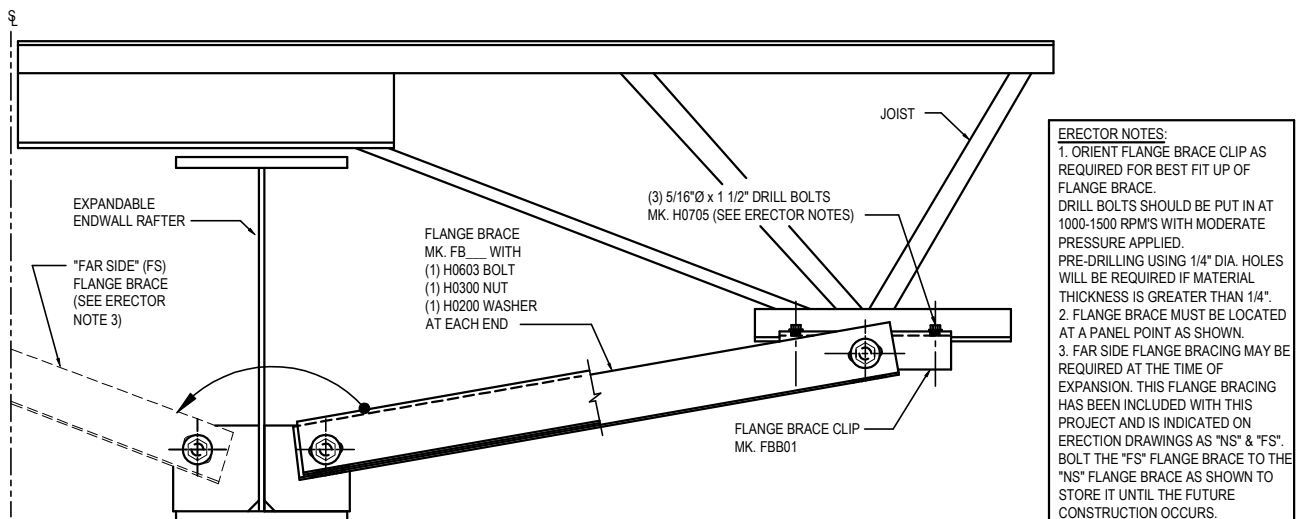
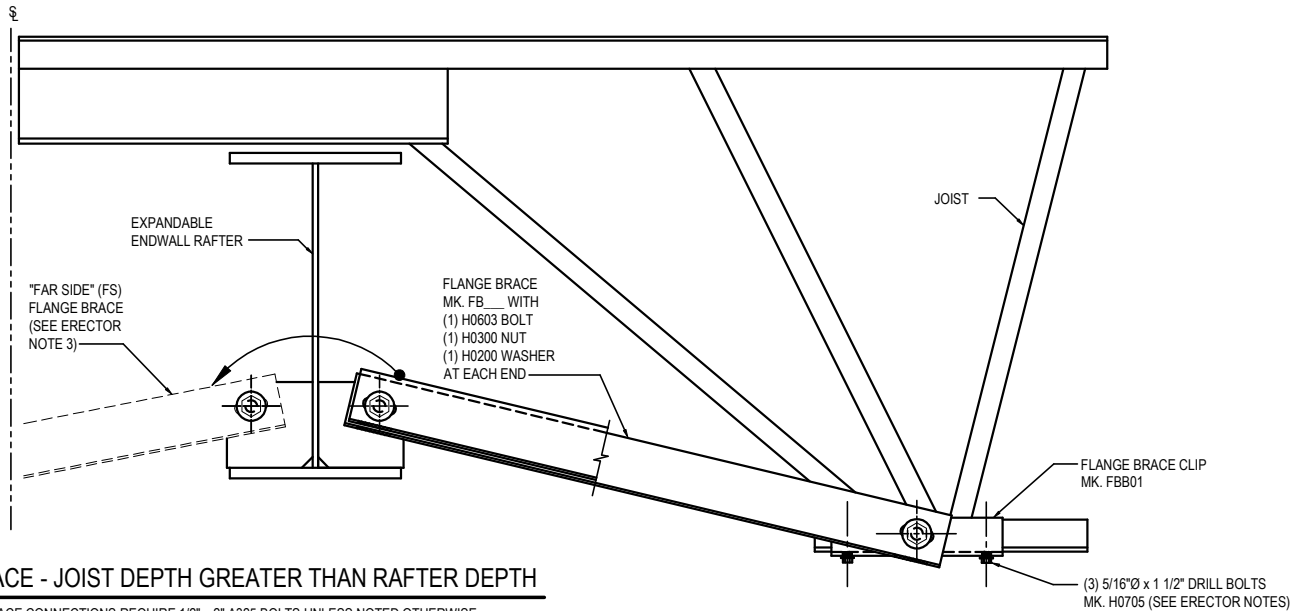
AG0026

Detailer Notes:

1) N/A

AG0027 - ALL BOLTED FLANGE BRACE AT EXP EW RAFTER TO JOIST

[Download the DWG file by clicking here.](#)



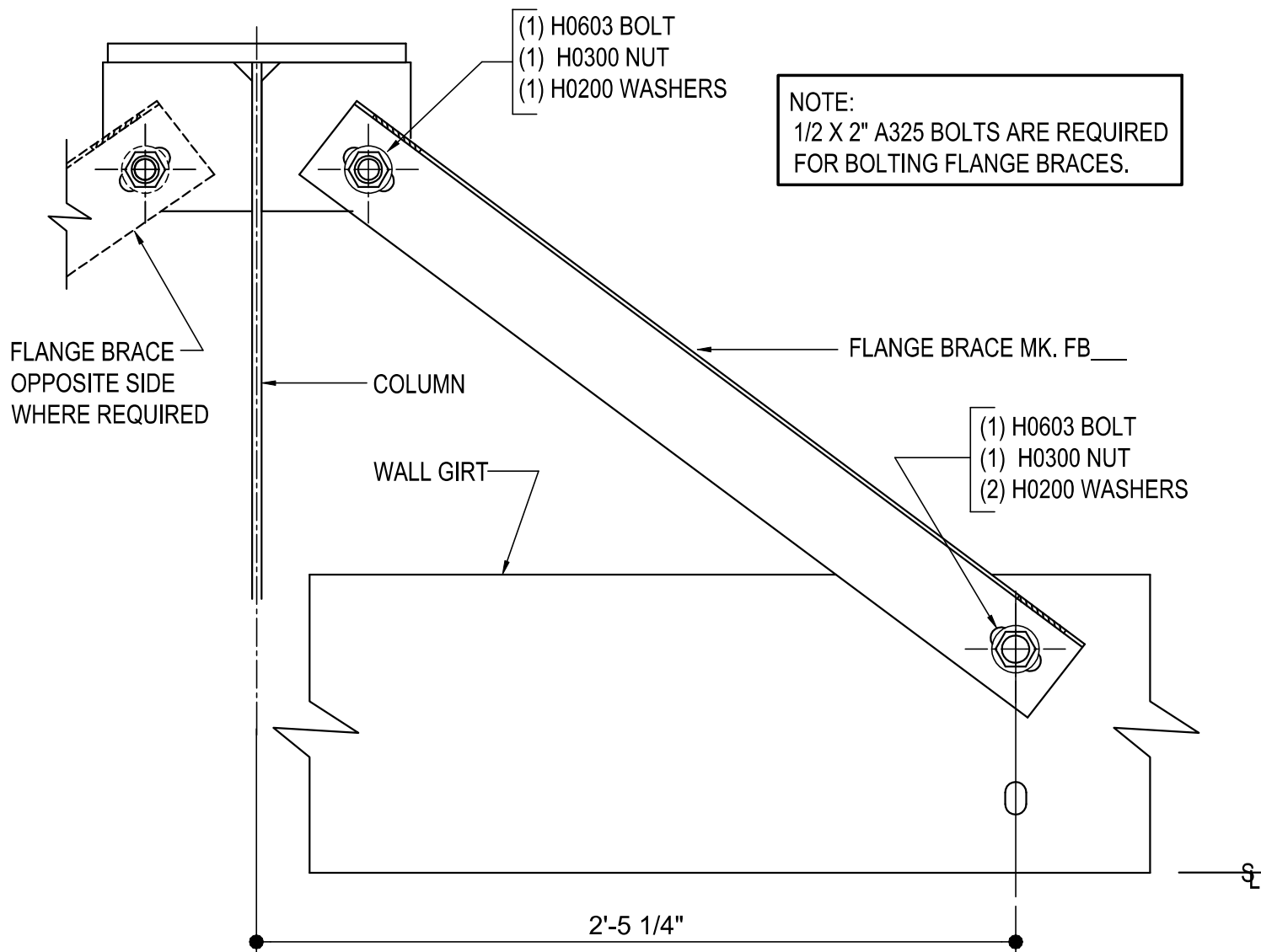
Detailer Notes:

1) N/A

AG0027

AG0030 - FLANGE BRACE AT COLUMN & GIRT

[Download the DWG file by clicking here.](#)



FLANGE BRACE AT COLUMN & GIRT

SEE PLANS AND ELEVATIONS FOR FLANGE BRACE LOCATIONS, PART MARKS,
& QUANTITIES

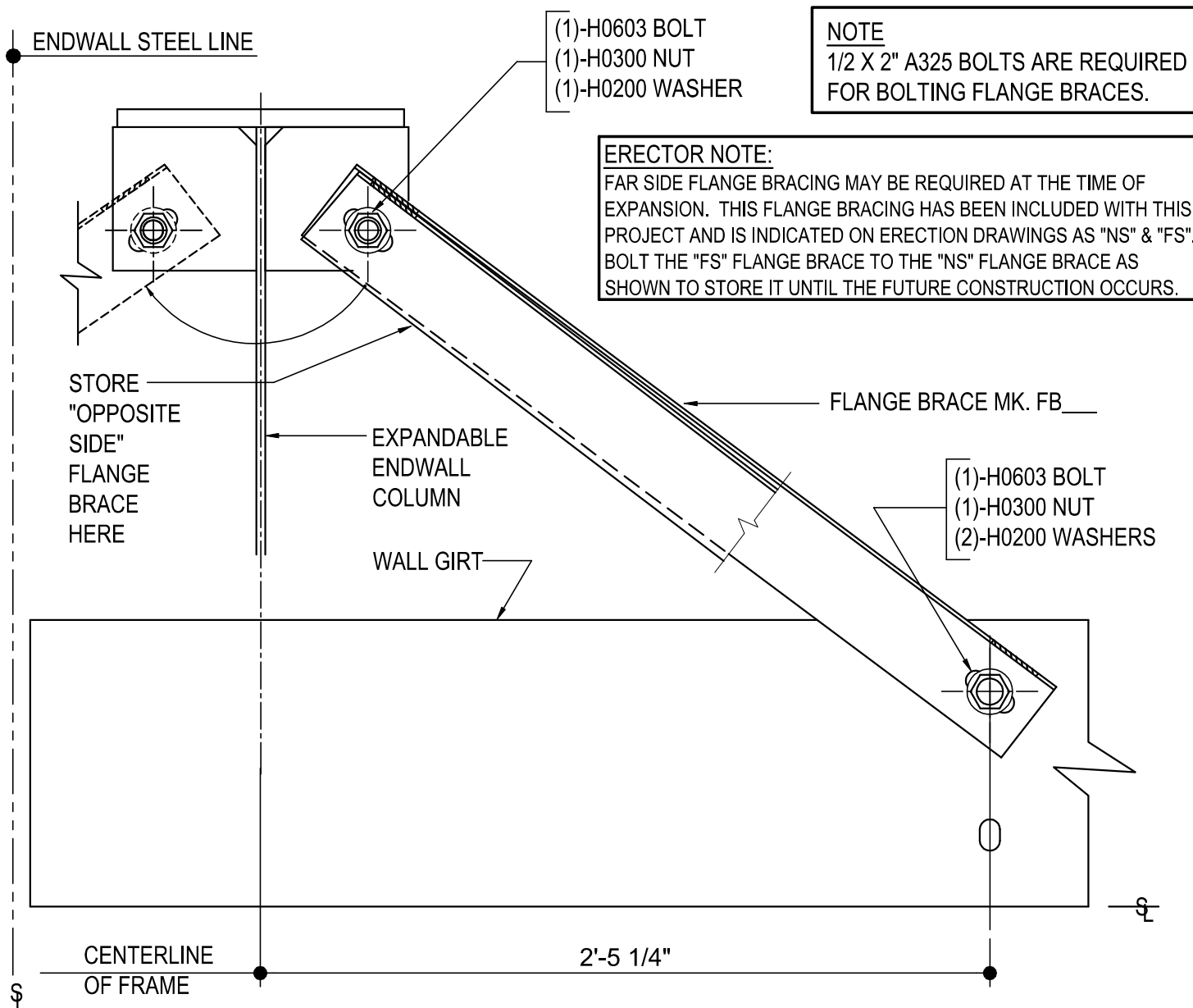
AG0030

Detailer Notes:

1) N/A

AG0034 - FLANGE BRACE AT EXP EW COLUMN & GIRT

[Download the DWG file by clicking here.](#)



FLANGE BRACE AT EXPANDABLE ENDWALL COLUMN & GIRT

SEE PLANS AND ELEVATIONS FOR FLANGE BRACE PART MARKS

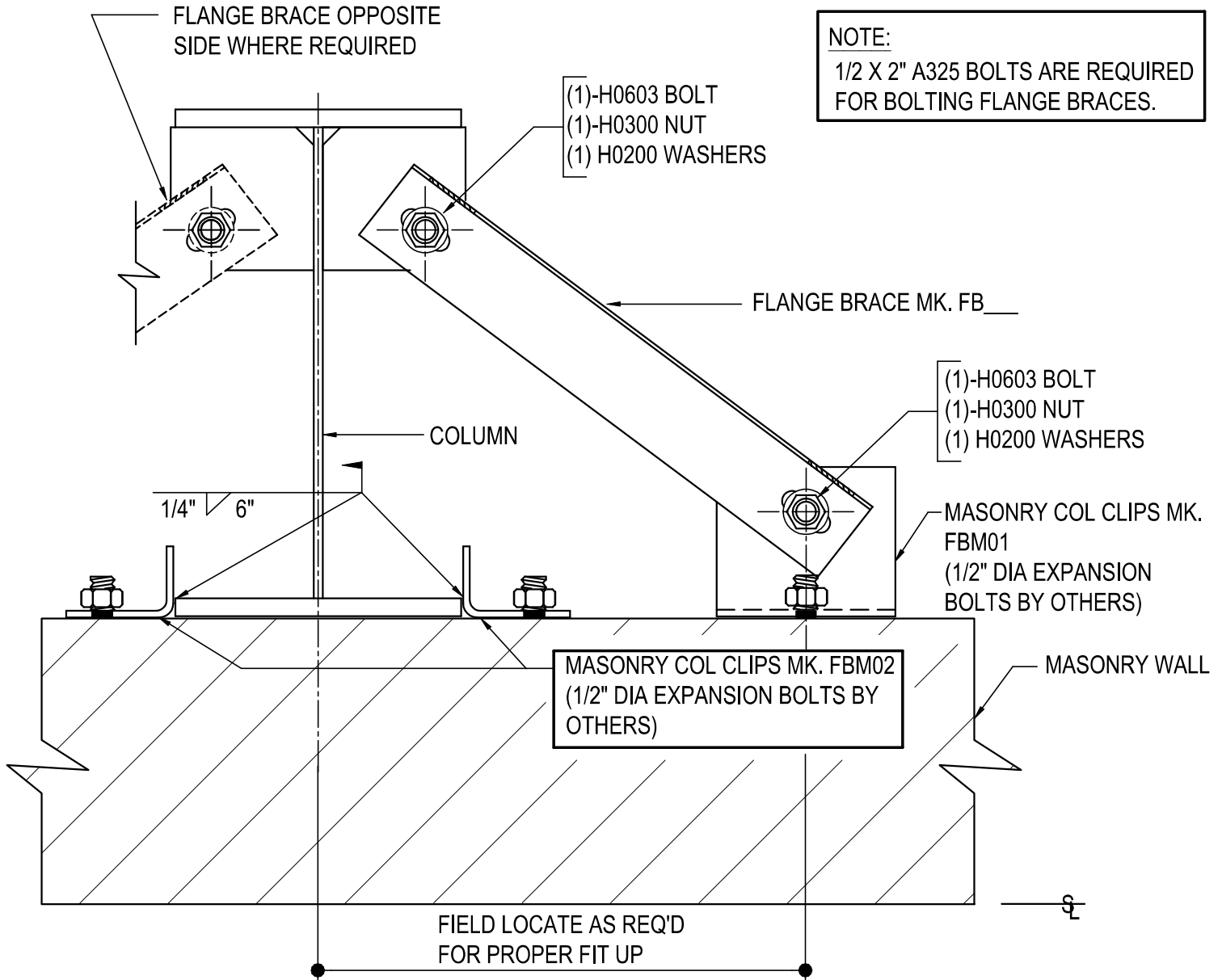
AG0034

Detailer Notes:

- 1) N/A

AG0040 - FLANGE BRACE AT COLUMN & MASONRY WALL

[Download the DWG file by clicking here.](#)



FLANGE BRACE AT COLUMN & MASONRY WALL

SEE PLANS AND ELEVATIONS FOR FLANGE BRACE LOCATIONS, PART MARKS, & QUANTITIES

AG0040

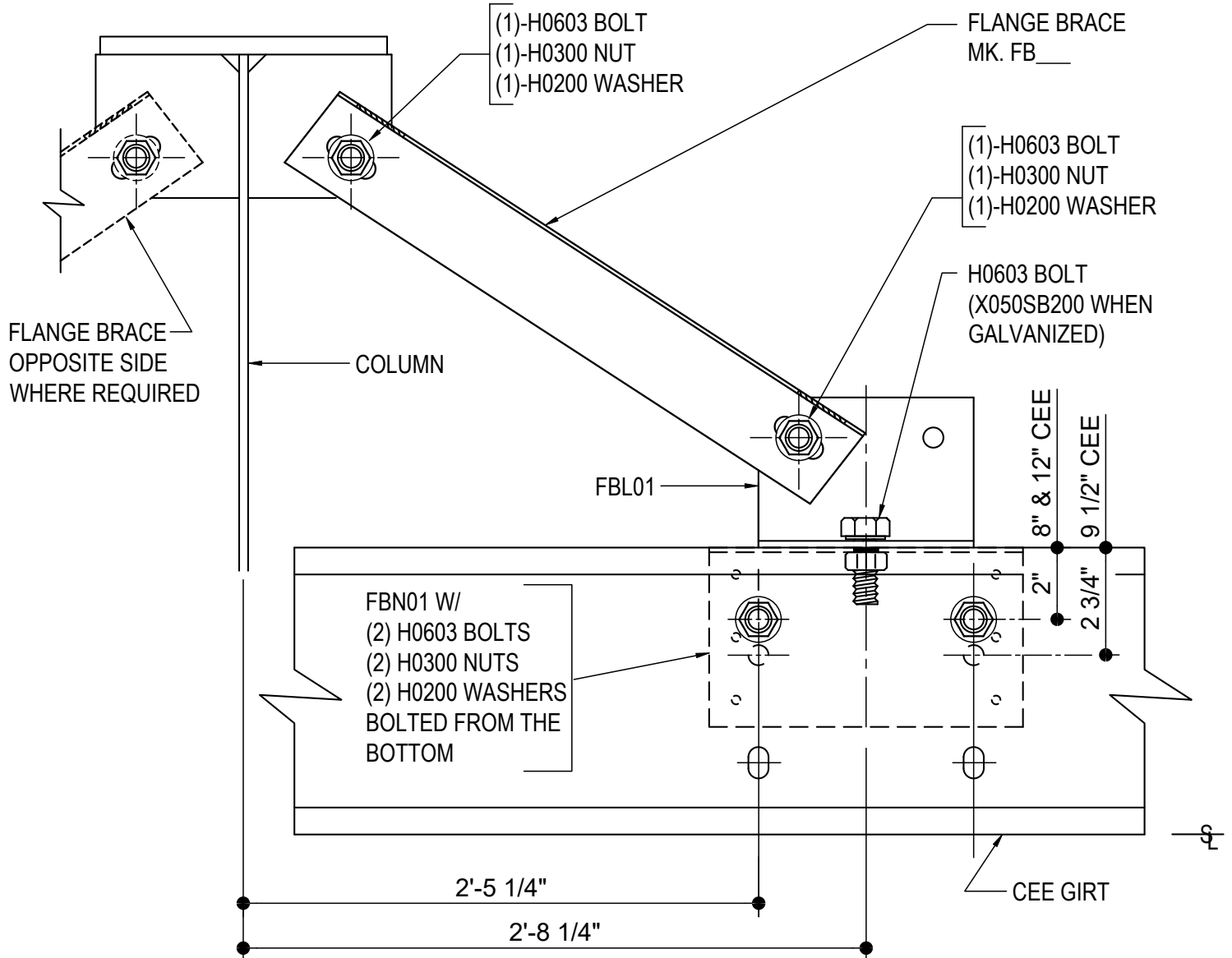
Detailer Notes:

1) N/A

AG0040

AG0050 - FLANGE BRACE AT COLUMN & CEE GIRT

[Download the DWG file by clicking here.](#)



FLANGE BRACE AT COLUMN & CEE GIRT

SEE PLANS AND ELEVATIONS FOR FLANGE BRACE LOCATIONS,
PART MARKS & QUANTITIES.

INSTALL FLANGE BRACE CLIP FBN01 PRIOR TO ERECTING MASONRY WALL.

Detailer Notes:

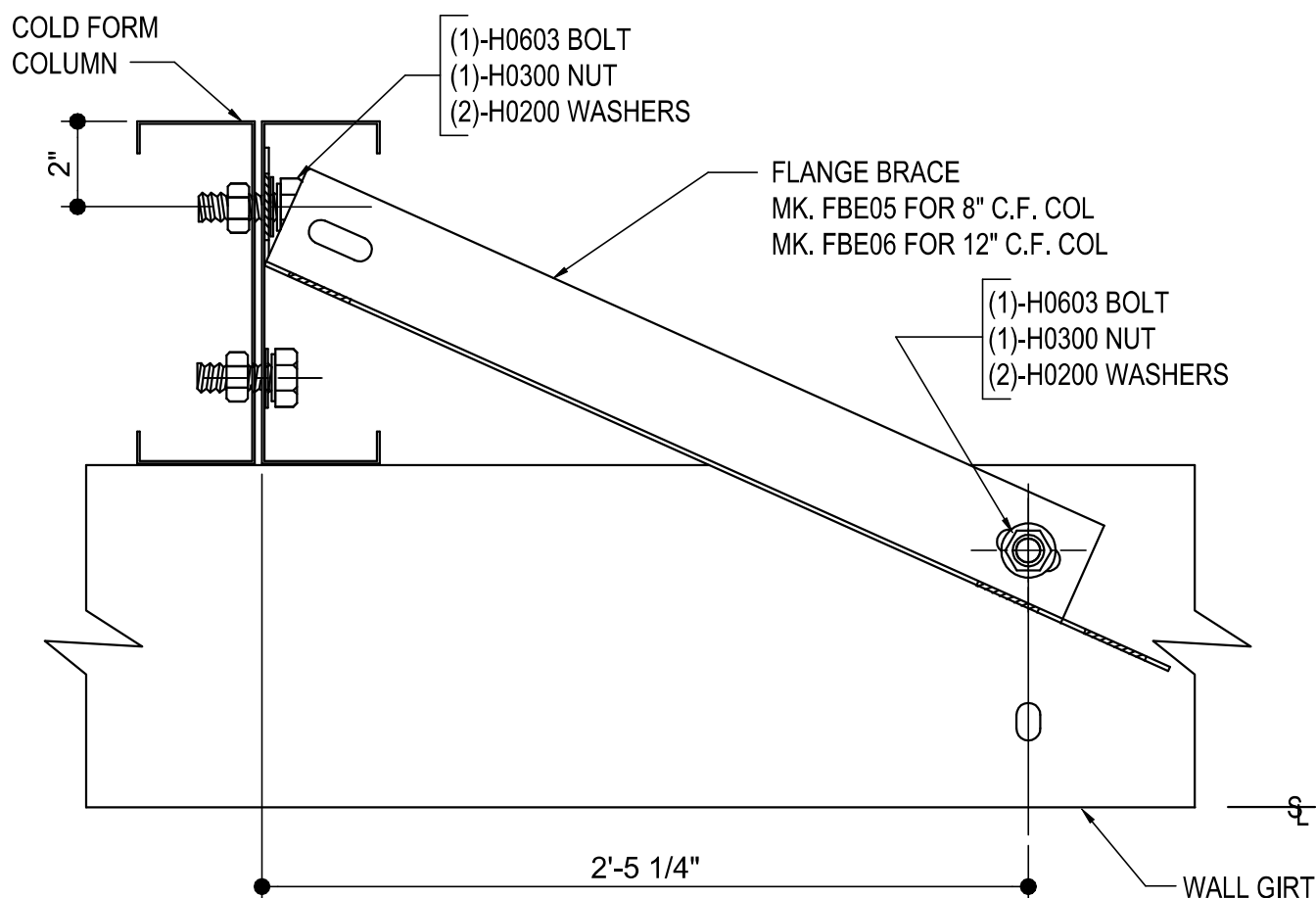
1) N/A

AG0050

AG0060 - FLANGE BRACE AT C.F. COLUMN & GIRT

[Download the DWG file by clicking here.](#)

NOTE:
1/2 X 2" A325 BOLTS ARE REQUIRED
FOR BOLTING FLANGE BRACES.



FLANGE BRACE AT COLD FORM COLUMN & GIRT

SEE PLANS AND ELEVATIONS FOR FLANGE BRACE PART MARKS,
FIELD BEND FLANGE BRACE FOR PROPER FIT UP

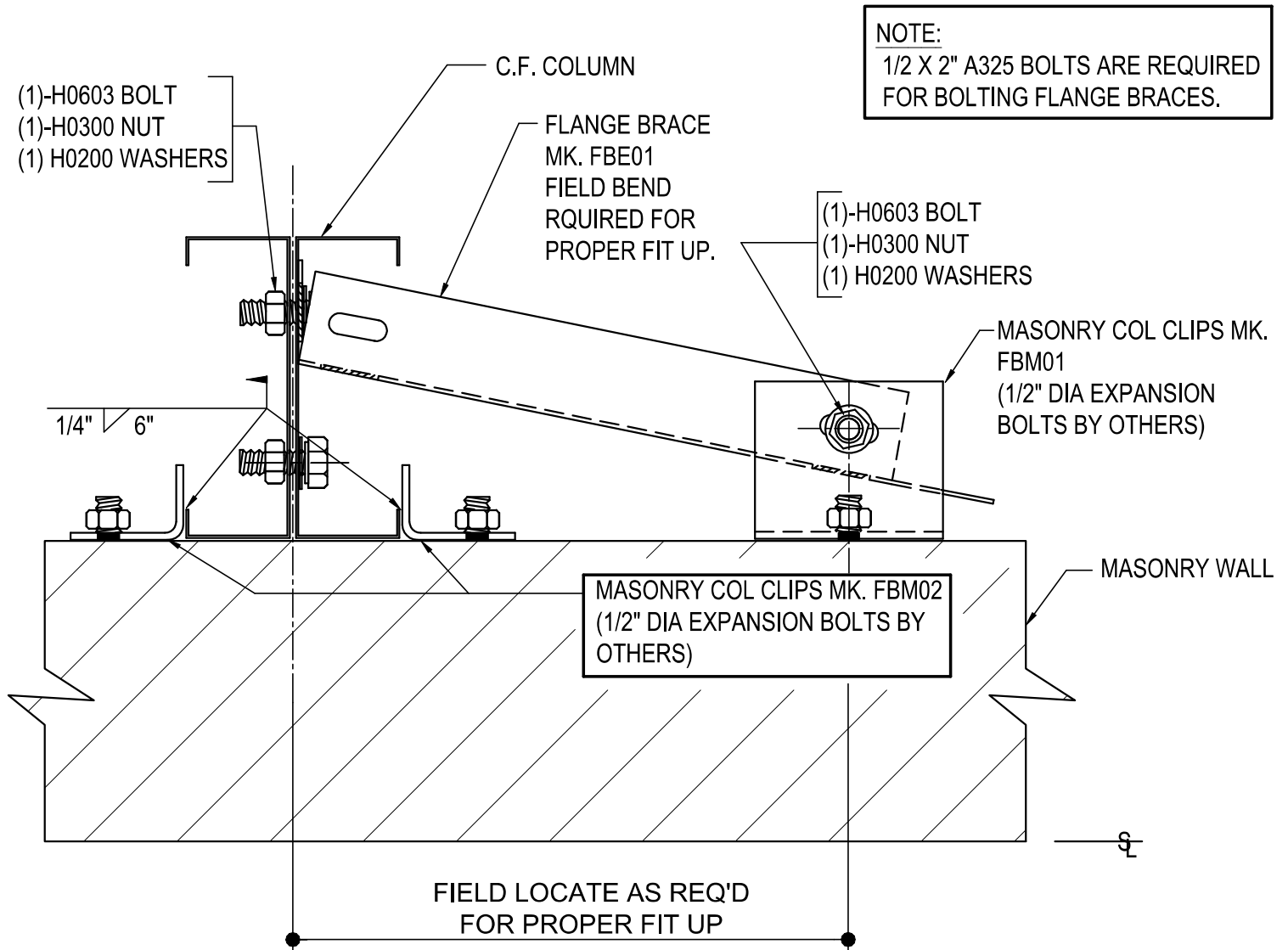
AG0060

Detailer Notes:

1) N/A

AG0070 - FLANGE BRACE AT C.F. COL & MAS WALL

[Download the DWG file by clicking here.](#)



FLANGE BRACE AT CF COLUMN & MASONRY WALL

SEE PLANS AND ELEVATIONS FOR FLANGE BRACE PART MARKS

AG0070

Detailer Notes:

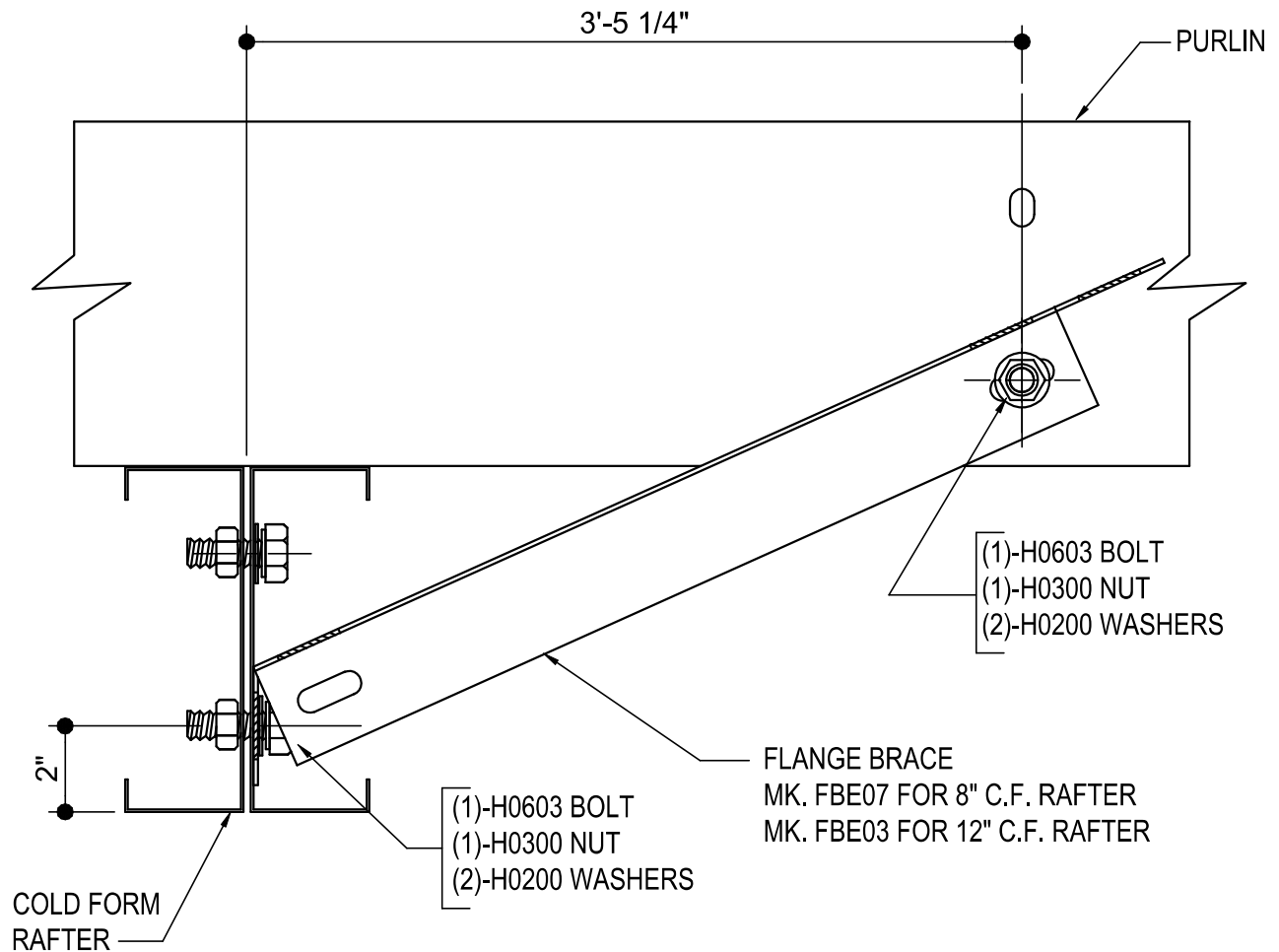
1) N/A

AG0080 - FLANGE BRACE AT C.F. RAFTER & PURLIN

[Download the DWG file by clicking here.](#)

NOTE:

1/2 X 2" A325 BOLTS ARE REQUIRED
FOR BOLTING FLANGE BRACES.



FLANGE BRACE AT COLD FORM RAFTER & PURLIN

SEE PLANS AND ELEVATIONS FOR FLANGE BRACE PART MARKS,
FIELD BEND FLANGE BRACE FOR PROPER FIT UP.

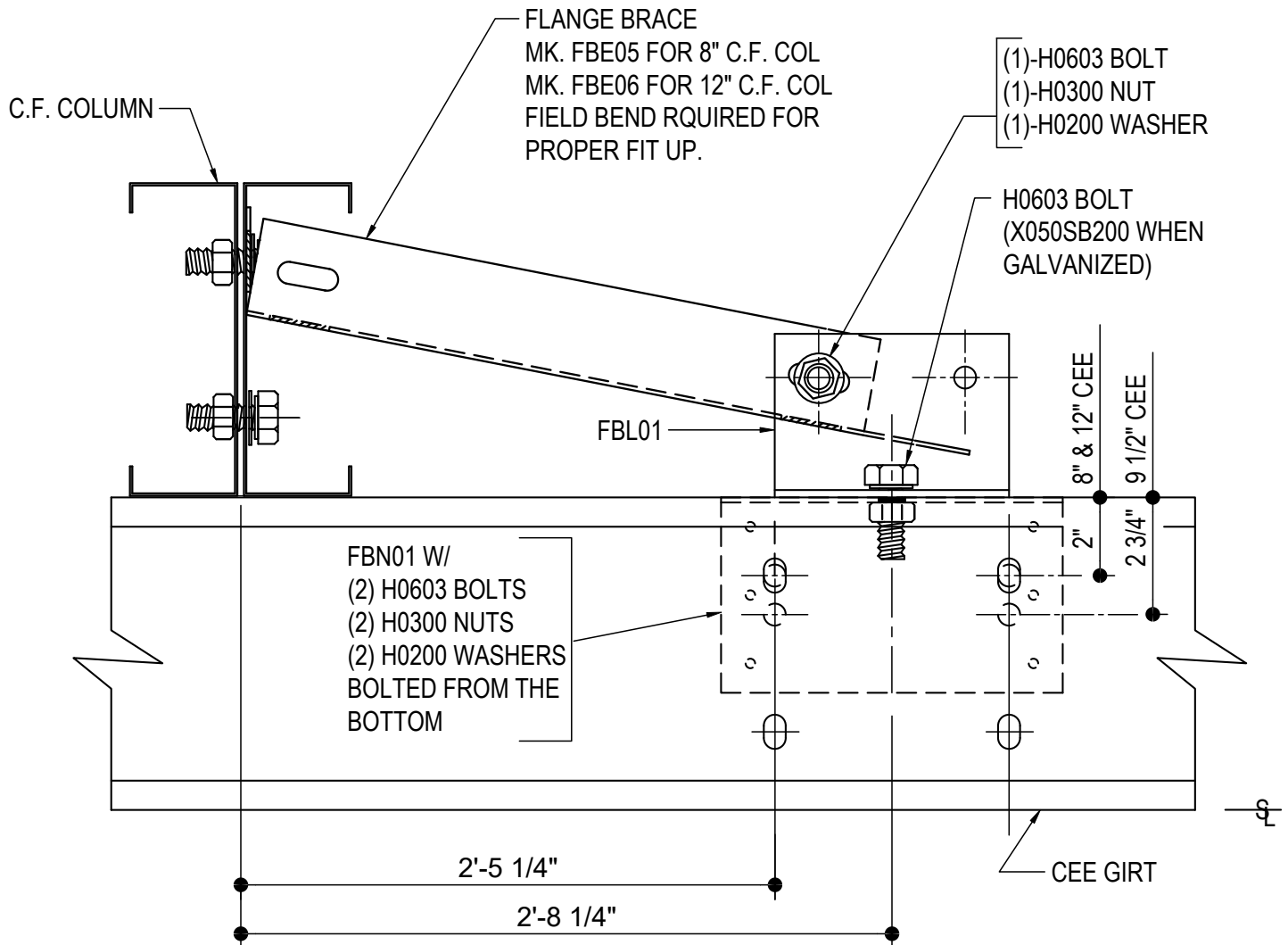
AG0080

Detailer Notes:

1) N/A

AG0090 - FLANGE BRACE AT CF COL & CEE GIRT

[Download the DWG file by clicking here.](#)



FLANGE BRACE AT CF COLUMN & CEE GIRT

SEE PLANS AND ELEVATIONS FOR FLANGE BRACE PART MARKS,
INSTALL FLANGE BRACE CLIP FBN01 PRIOR TO ERECTING MASONRY WALL.

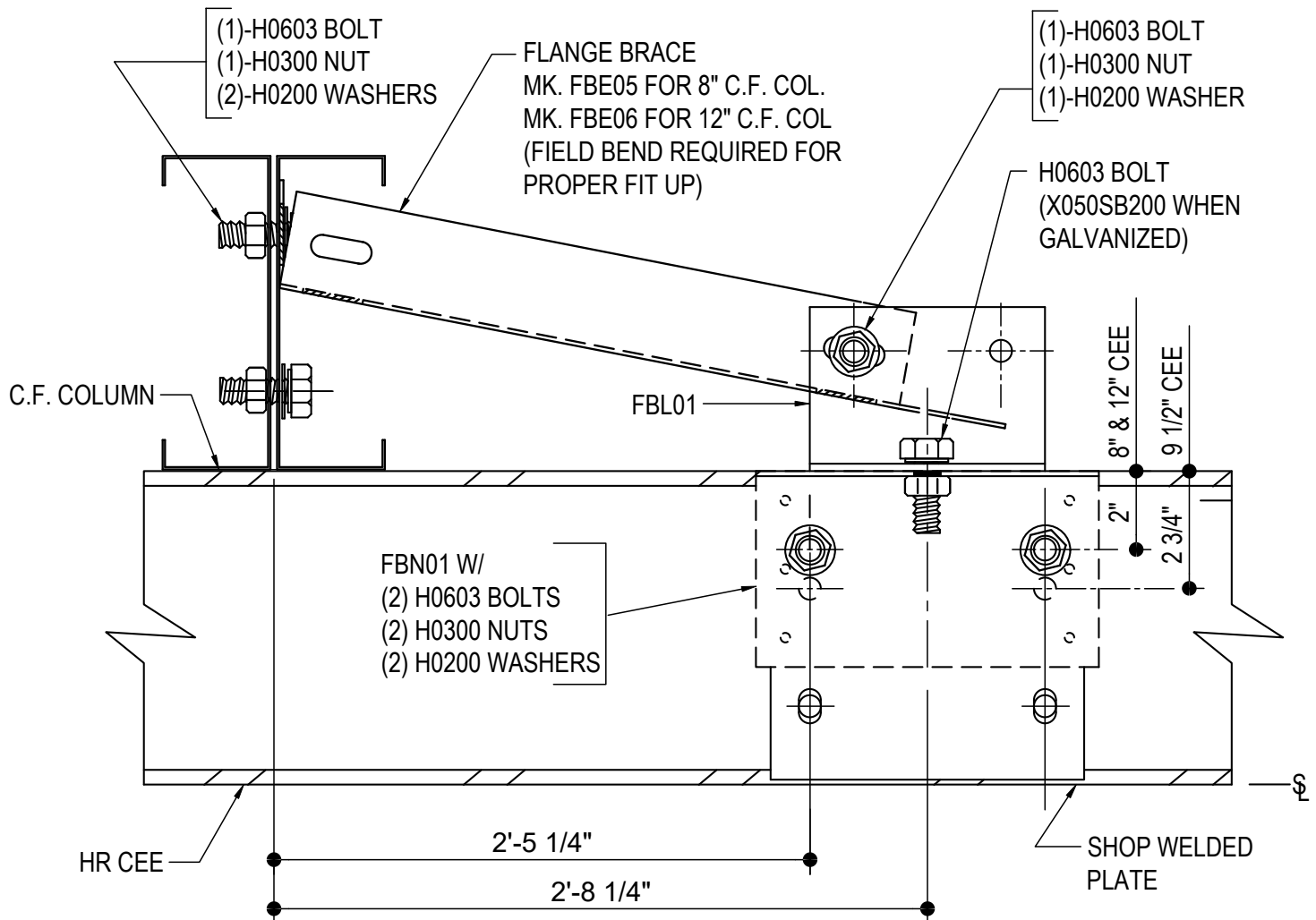
AG0090

Detailer Notes:

1) N/A

AG0100 - FLANGE BRACE AT CF COL & HR CEE

[Download the DWG file by clicking here.](#)



FLANGE BRACE AT CF COLUMN & HR CEE

SEE PLANS AND ELEVATIONS FOR FLANGE BRACE PART MARKS,
INSTALL FLANGE BRACE CLIP FBN01 PRIOR TO ERECTING MASONRY WALL.

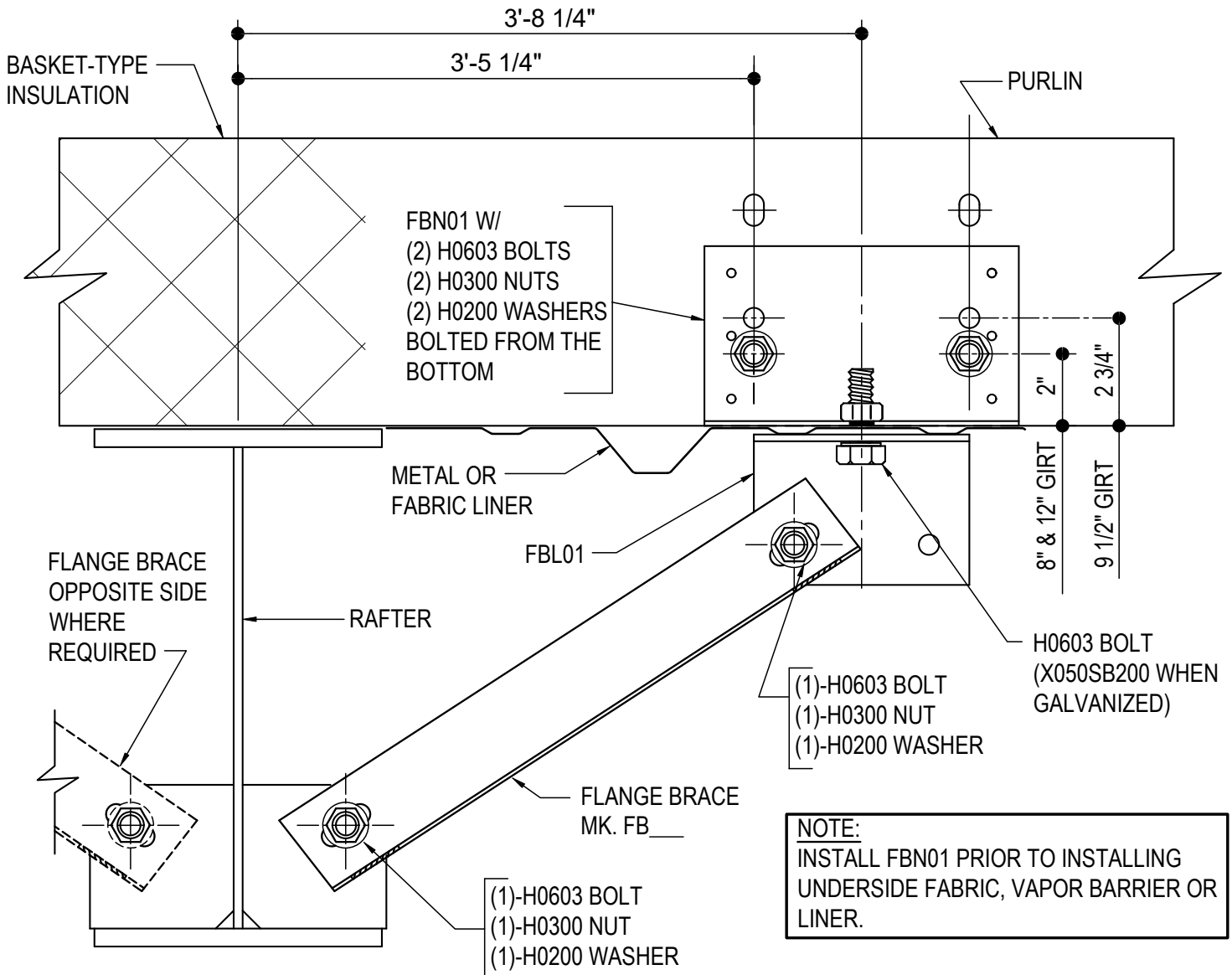
AG0100

Detailer Notes:

1) N/A

AG0110 - FLANGE BRACE WITH BASKET INSUL OR LINER AT RAFTER

[Download the DWG file by clicking here.](#)



FLANGE BRACE WITH BASKET INSUL OR LINER AT RAFTER

SEE PLANS AND ELEVATIONS FOR FLANGE BRACE LOCATIONS, PART MARKS,
& QUANTITIES

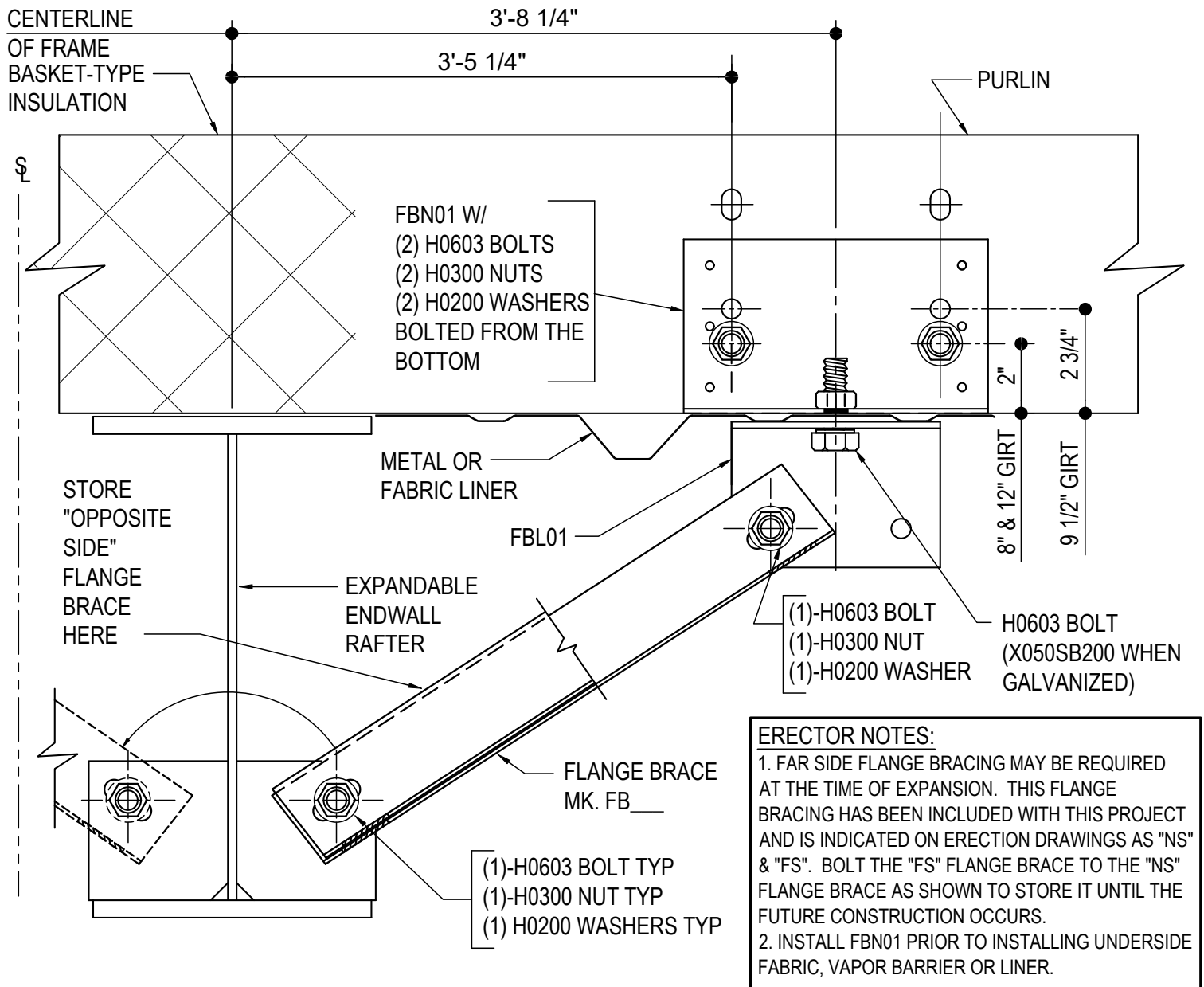
AG0110

Detailer Notes:

- 1) USE DETAIL ON ALL BASKET TYPE INSULATION SYSTEMS, FABRIC LINER OR METAL LINER JOBS.

AG0140 - FLANGE BRACE WITH BASKET INSUL OR LINER @ EW RAFTER

[Download the DWG file by clicking here.](#)



FLANGE BRACE WITH BASKET INSUL OR LINER @ EW RAFTER

SEE PLANS AND ELEVATIONS FOR FLANGE BRACE PART MARKS

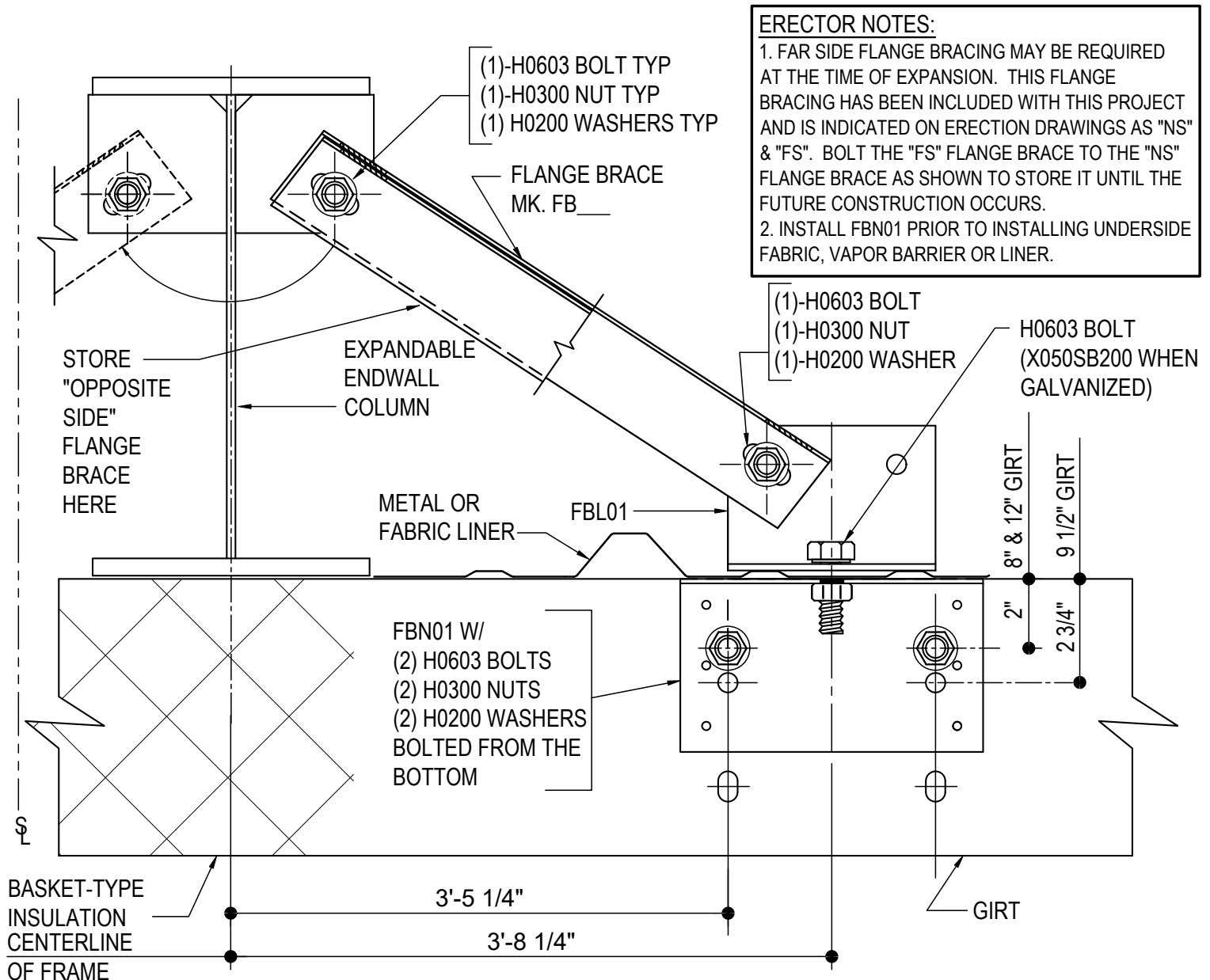
AG0140

Detailer Notes:

- 1) USE DETAIL ON ALL BASKET TYPE INSULATION SYSTEMS, FABRIC LINER OR METAL LINER JOBS.

AG0160 - FLANGE BRACE WITH BASKET INSUL OR LINER @ EXP EW COL

[Download the DWG file by clicking here.](#)



FLANGE BRACE WITH BASKET INSUL OR LINER @ EW COLUMN

SEE PLANS AND ELEVATIONS FOR FLANGE BRACE PART MARKS

AG0160

Detailer Notes:

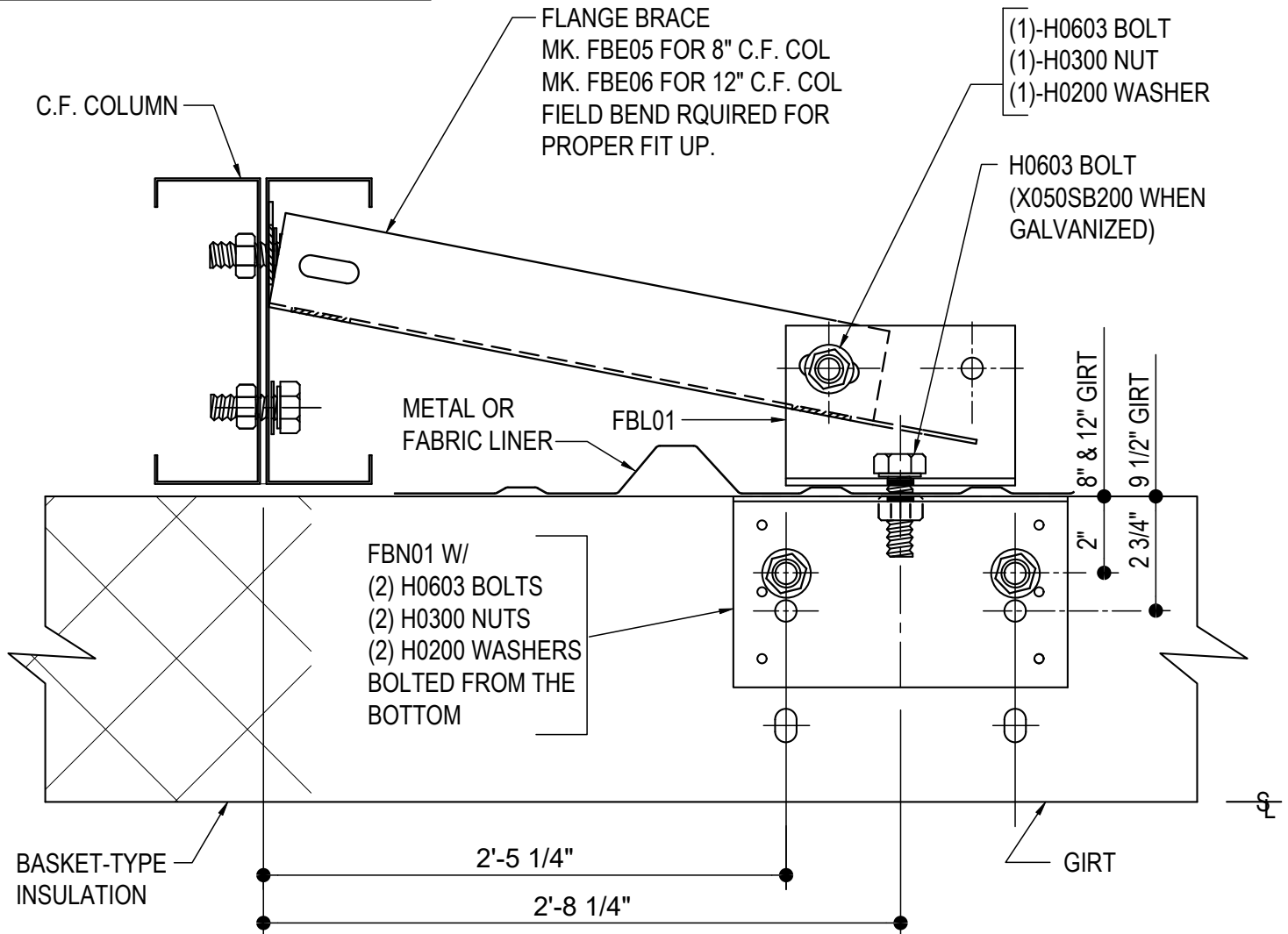
- 1) USE DETAIL ON ALL BASKET TYPE INSULATION SYSTEMS, FABRIC LINER OR METAL LINER JOBS.

AG0170 - FLANGE BRACE AT CF COLUMN & GIRT W/ LINER

[Download the DWG file by clicking here.](#)

ERECTOR NOTE:

INSTALL FBN01 PRIOR TO INSTALLING
UNDERSIDE FABRIC, VAPOR BARRIER OR LINER.



FLANGE BRACE AT COLD FORM COLUMN & GIRT

SEE PLANS AND ELEVATIONS FOR FLANGE BRACE PART MARKS

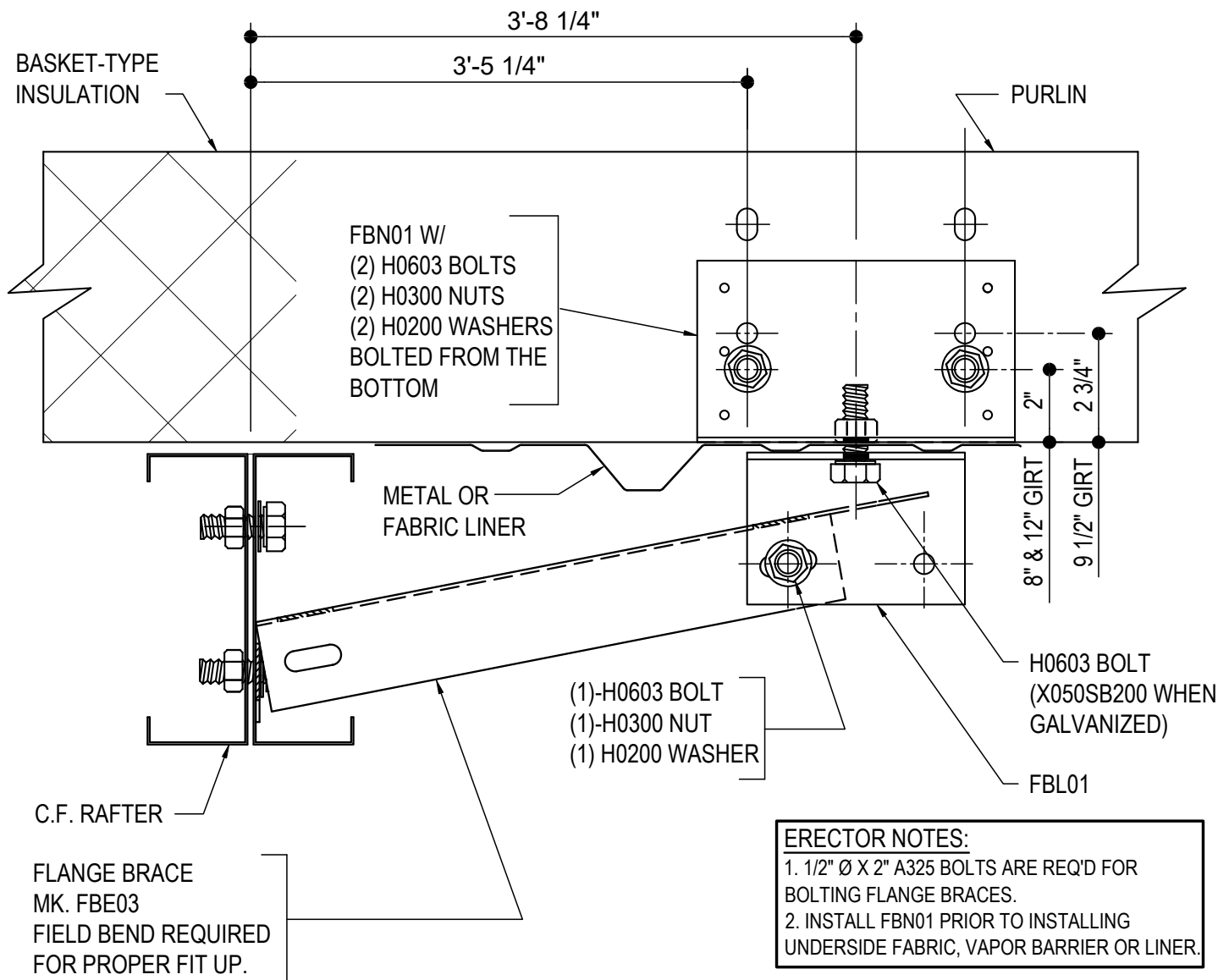
AG0170

Detailer Notes:

- 1) USE DETAIL ON ALL BASKET TYPE INSULATION SYSTEMS, FABRIC OR METAL LINER JOBS.

AG0180 - FLANGE BRACE AT CF RAFTER & PURLIN W/ LINER

[Download the DWG file by clicking here.](#)



FLANGE BRACE AT COLD FORM RAFTER & PURLIN

SEE PLANS AND ELEVATIONS FOR FLANGE BRACE PART MARKS

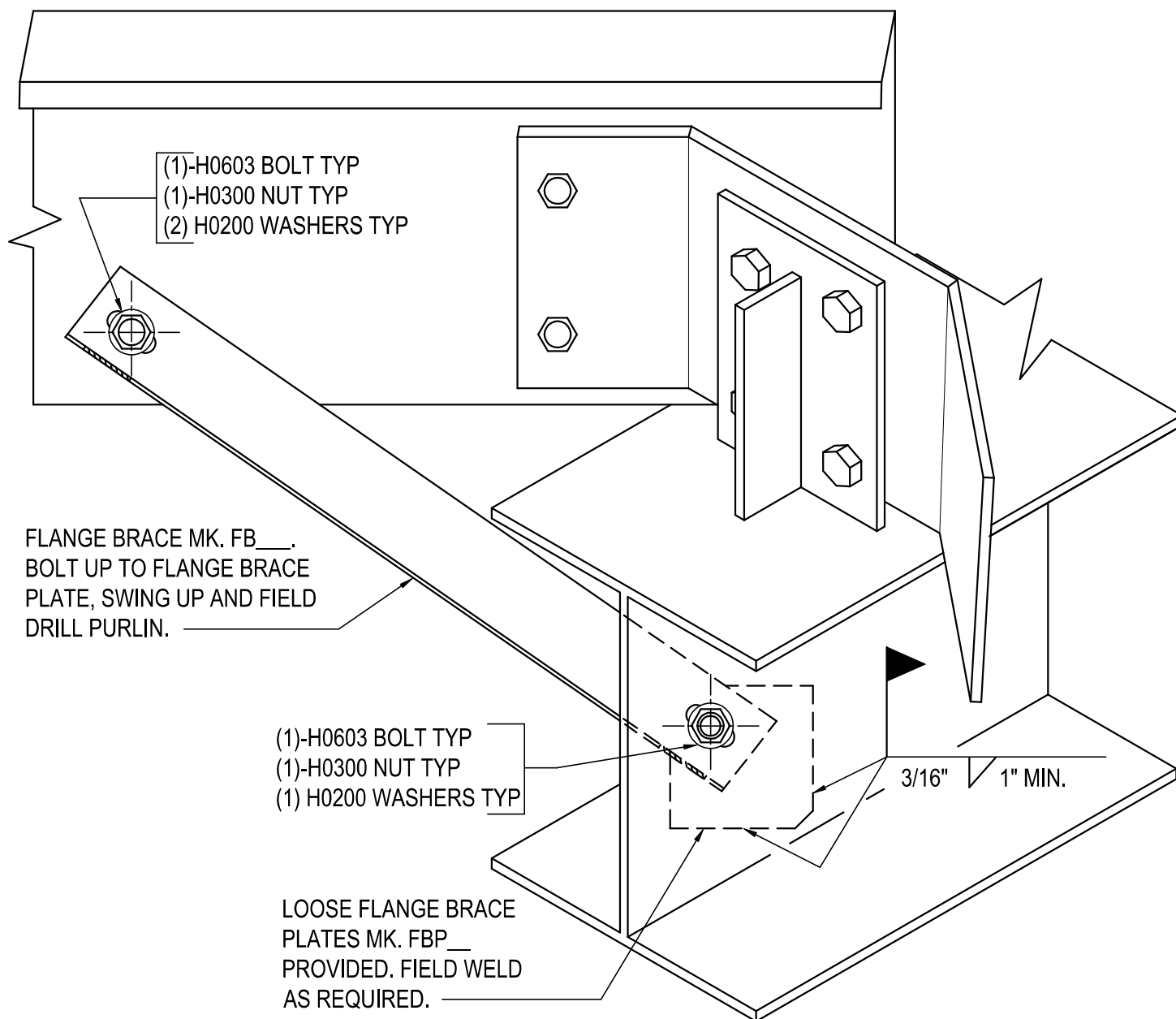
AG0180

Detailer Notes:

- 1) USE DETAIL ON ALL BASKET TYPE INSULATION SYSTEMS, FABRIC OR METAL LINER JOBS.

AG0210 - FLANGE BRACE PURLIN & HIP/VALLEY RAFTER

[Download the DWG file by clicking here.](#)



FLANGE BRACE AT PURLIN & HIP/VALLEY RAFTER

SEE PLANS AND ELEVATIONS FOR FLANGE BRACE LOCATIONS, PART MARKS,
& QUANTITIES.

1/2"Ø X 2" A325 BOLTS ARE REQ'D FOR BOLTING FLANGE BRACES.

AG0210

Detailer Notes:

1) N/A

AG0210