

**SEE D2D SHEETS FOR STANDARD CANOPIES**

**BOXED OUT CANOPIES**

AQ0010 - VERTICAL C.F. MEMBER ATTACHMENT TO CANOPY BEAM

AQ0020 - VERTICAL C.F. MEMBER ATTACHMENT TO HORIZONTAL MEMBER

AQ0030 - HORIZONTAL C.F. MEMBER ATTACHMENT TO MAIN COLUMN (FLUSH)

AQ0040 - HORIZONTAL C.F. MEMBER ATTACHMENT TO MAIN COLUMN (INSET)

AQ0050 - HORIZONTAL C.F. MEMBER ATTACHMENT TO MAIN COLUMN (BYPASS)

AQ0060 - HORIZONTAL C.F. MEMBER ATTACHMENT TO MAIN CORNER COLUMN

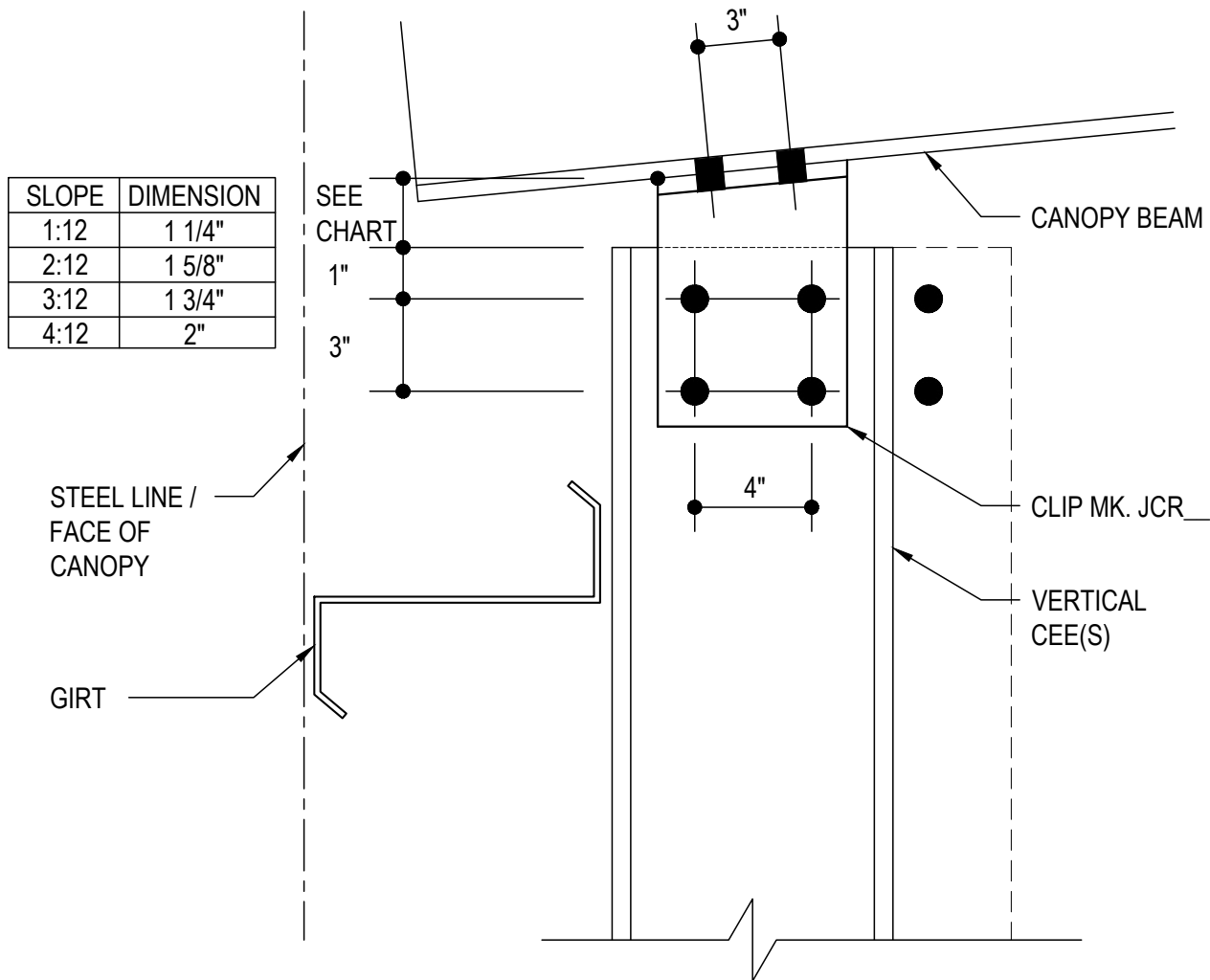
AQ0090 - SAG CABLE DETAIL (BAY SPACING LESS THAN 20'-0")

AQ0100 - SAG CABLE DETAIL (BAY SPACING GREATER THAN 20'-0")

---

AQ0010 - VERTICAL COLD-FORMED MEMBER ATTACHMENT TO CANOPY BEAM

[Download the DWG file by clicking here.](#)



## VERTICAL COLD-FORMED MEMBER ATTACHMENT TO CANOPY BEAM

NOTE: USE (8) 1/2" X 2" A325 BOLTS H0603 / NUTS H0300  
REFERENCE STANDARD WASHER DETAIL FOR TYPICAL WASHER REQUIREMENTS.

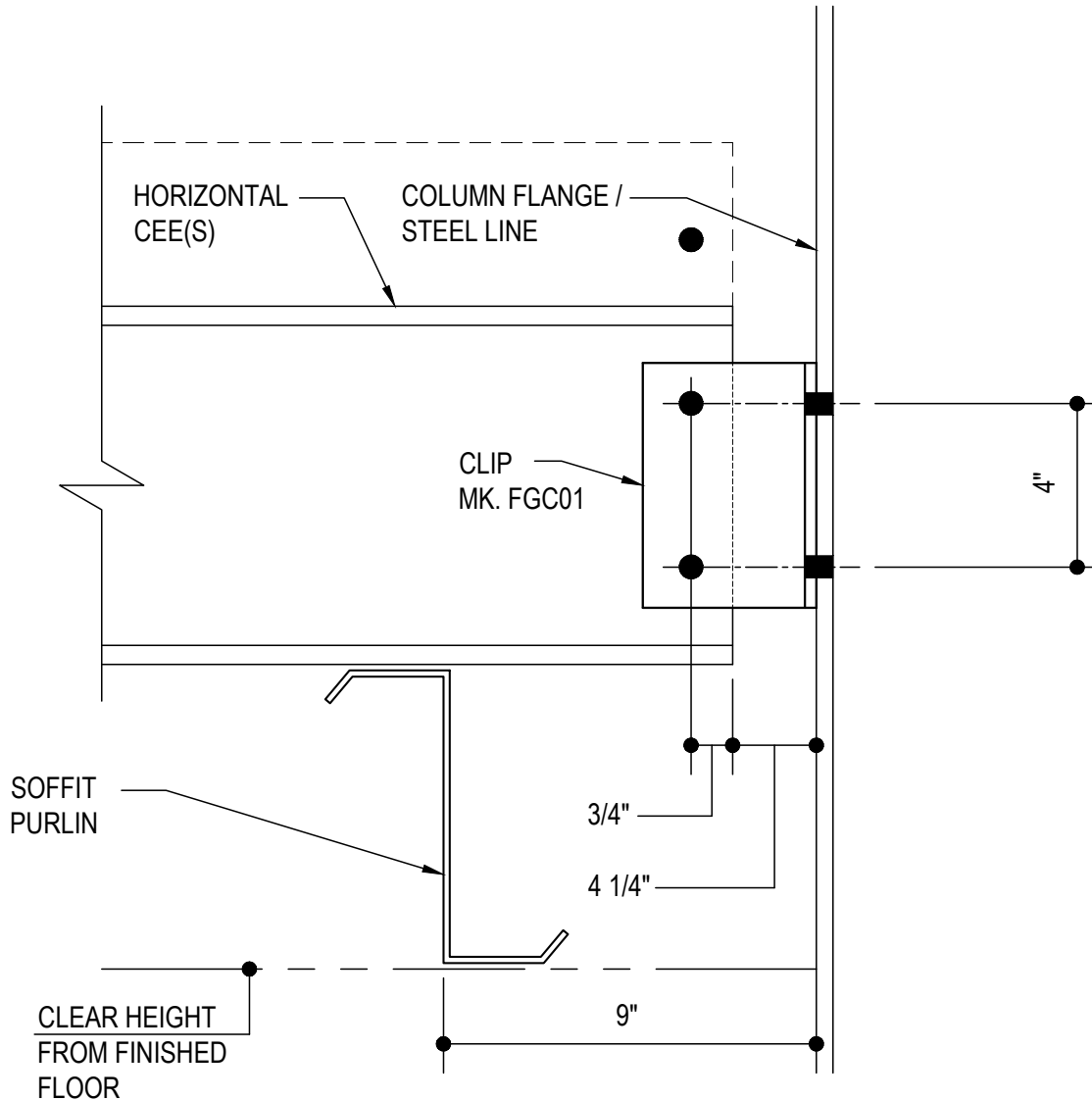
**AQ0010**

Detailer Notes:



AQ0030 - HORIZONTAL COLD-FORMED MEMBER ATTACHMENT TO MAIN COLUMN (FLUSH)

[Download the DWG file by clicking here.](#)



## HORIZONTAL COLD-FORMED MEMBER ATTACHMENT TO MAIN COLUMN (FLUSH)

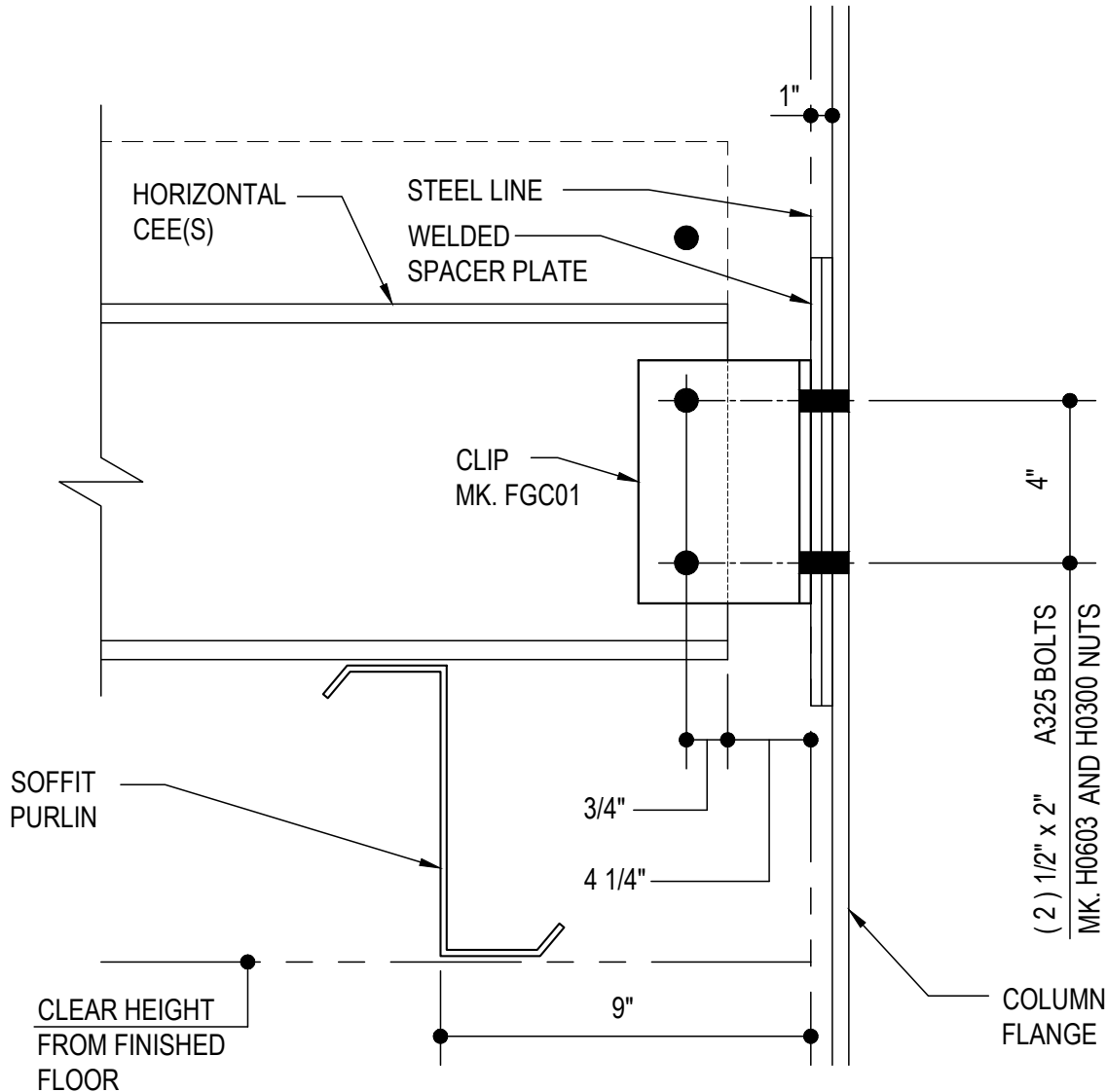
NOTE: USE ( 4 ) 1/2" X 2" A325 BOLTS H0603 / NUTS H0300  
REFERENCE STANDARD WASHER DETAIL FOR TYPICAL WASHER REQUIREMENTS.

**AQ0030**

Detailer Notes:

AQ0040 - HORIZONTAL COLD-FORMED MEMBER ATTACHMENT TO MAIN COLUMN (INSET)

[Download the DWG file by clicking here.](#)



## HORIZONTAL COLD-FORMED MEMBER ATTACHMENT TO MAIN COLUMN (INSET)

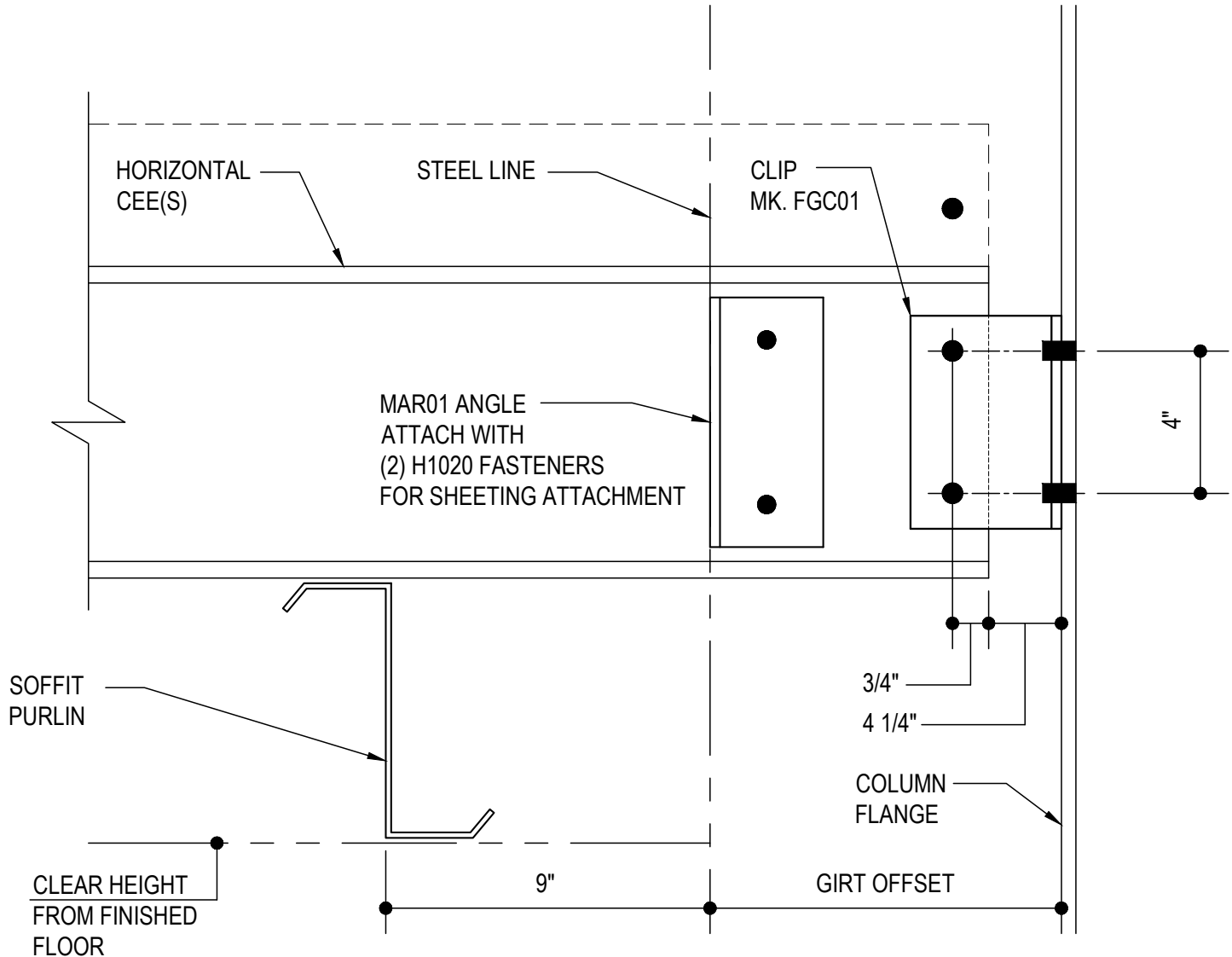
NOTE: USE (2) 1/2" X 2" A325 BOLTS H0603 / NUTS H0300  
REFERENCE STANDARD WASHER DETAIL FOR TYPICAL WASHER REQUIREMENTS.

**AQ0040**

Detailer Notes:

AQ0050 - HORIZONTAL COLD-FORMED MEMBER ATTACHMENT TO MAIN COLUMN (BYPASS)

[Download the DWG file by clicking here.](#)



## HORIZONTAL COLD-FORMED MEMBER ATTACHMENT TO MAIN COLUMN (BYPASS)

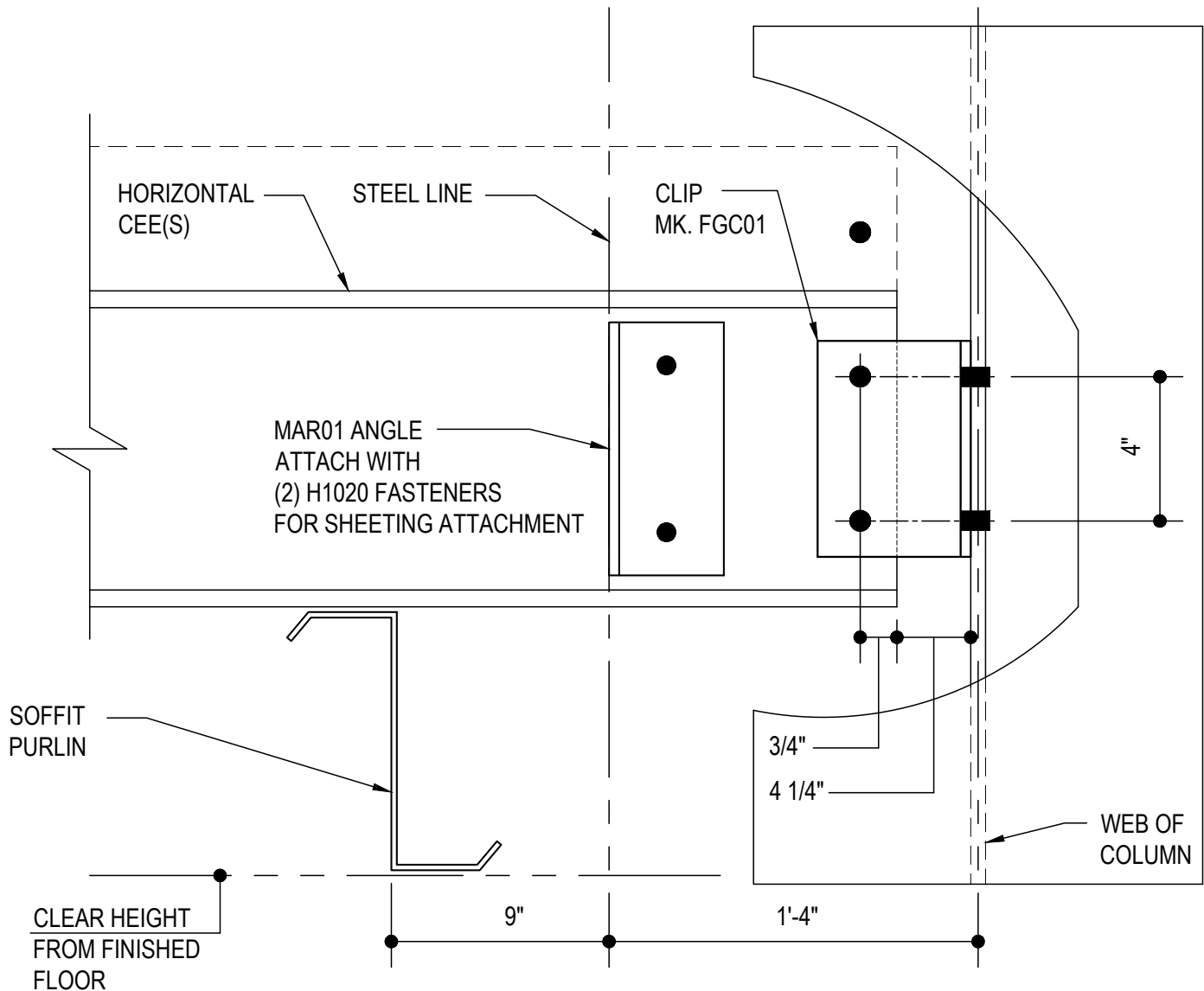
NOTE: USE ( 4 ) 1/2" X 2" A325 BOLTS H0603 / NUTS H0300  
REFERENCE STANDARD WASHER DETAIL FOR TYPICAL WASHER REQUIREMENTS.

**AQ0050**

Detailer Notes:

AQ0060 - HORIZONTAL COLD-FORMED MEMBER ATTACHMENT TO MAIN CORNER COLUMN

[Download the DWG file by clicking here.](#)



## HORIZONTAL COLD-FORMED MEMBER ATTACHMENT TO MAIN CORNER COLUMN

NOTE: USE ( 4 ) 1/2" X 2" A325 BOLTS H0603 / NUTS H0300  
REFERENCE STANDARD WASHER DETAIL FOR TYPICAL WASHER REQUIREMENTS.

**AQ0060**

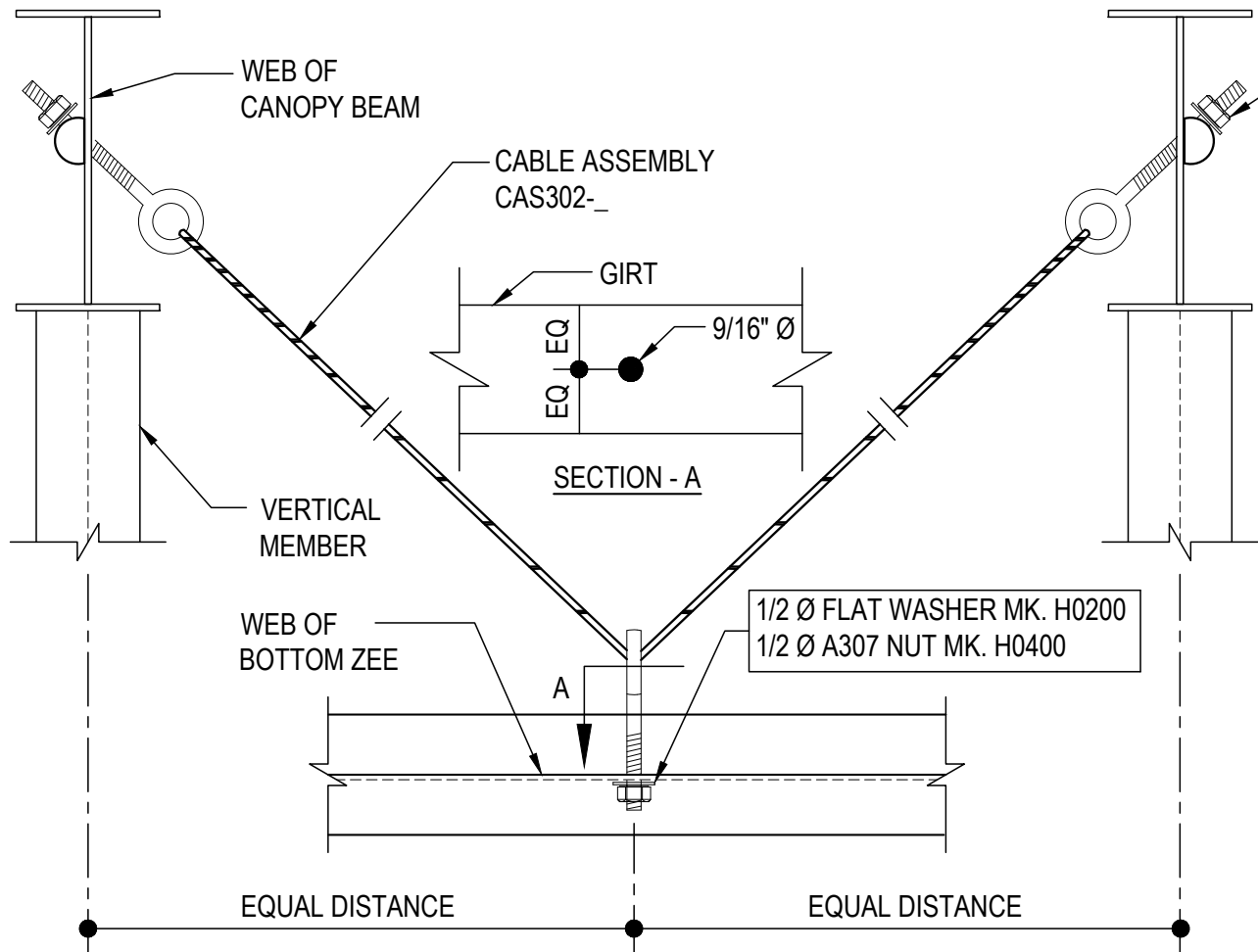
Detailer Notes:

AQ0090 - SAG CABLE DETAIL (BAY SPACING LESS THAN 20'-0")

[Download the DWG file by clicking here.](#)

FIELD SLOT INTERMEDIATE GIRT(S) TO ALLOW CABLE ASSEMBLY TO PASS THROUGH.  
FIELD DRILL BOTTOM ZEE WITH 9/16" DIA HOLE TO ALLOW FOR CABLE EYEBOLT ATTACHMENT.

7/8 Ø HILLSIDE WASHER MK. H0280  
1/2 Ø FLAT WASHER MK. H0200  
1/2 Ø A307 NUT MK. H0400



## SAG CABLE DETAIL

BAY SPACING  $\leq$  20'-0"

**AQ0090**

### Detailer Notes:

1) N/A

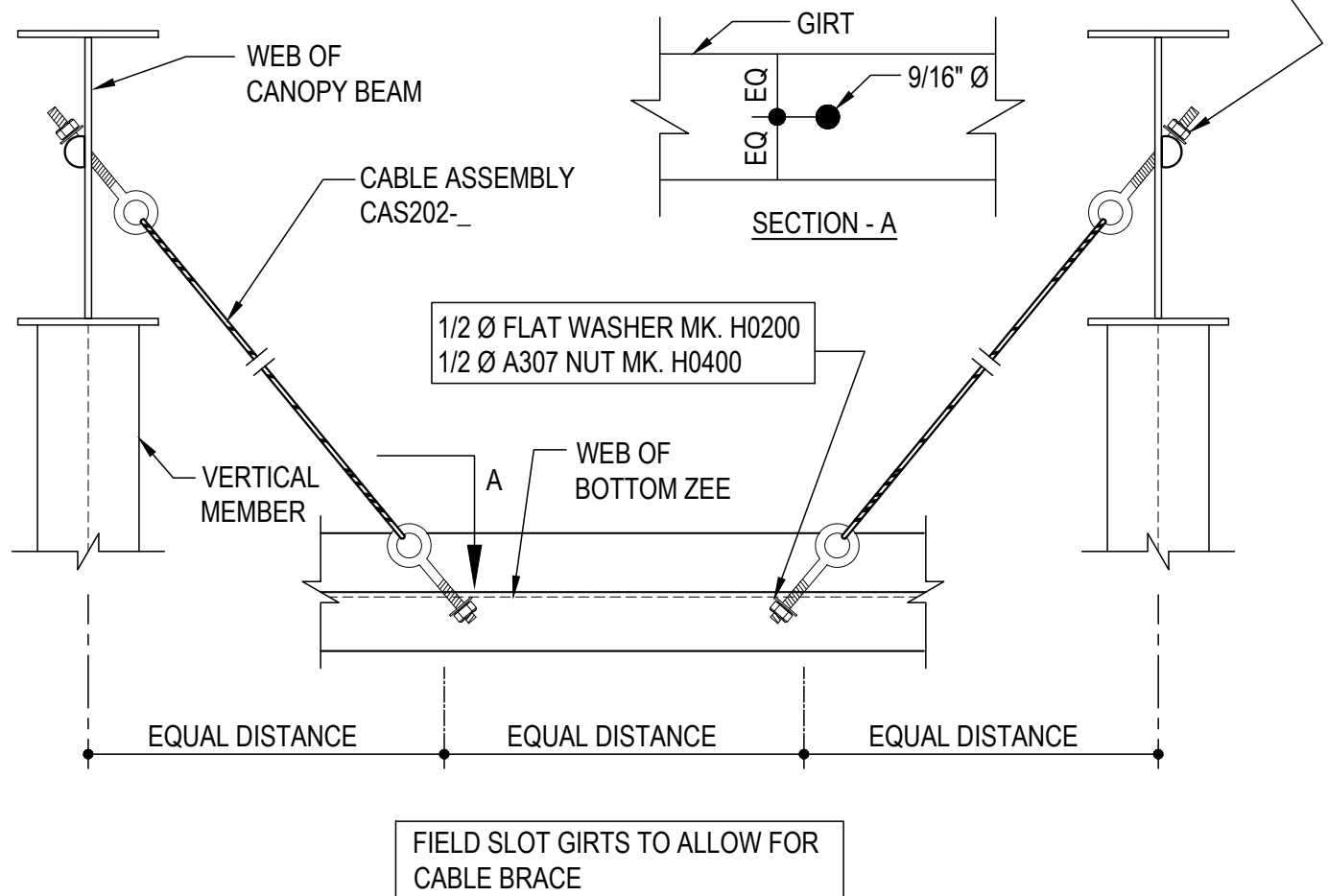


AQ0100 - SAG CABLE DETAIL (BAY SPACING GREATER THAN 20'-0")

[Download the DWG file by clicking here.](#)

FIELD SLOT INTERMEDIATE GIRT(S) TO ALLOW  
CABLE ASSEMBLY TO PASS THROUGH.  
FIELD DRILL BOTTOM ZEE WITH 9/16" DIA HOLE TO  
ALLOW FOR CABLE EYEBOLT ATTACHMENT.

7/8 Ø HILLSIDE WASHER MK. H0280  
1/2 Ø FLAT WASHER MK. H0200  
1/2 Ø A307 NUT MK. H0400



## SAG CABLE DETAIL

BAY SPACING > 20'-0"

**AQ0100**

### Detailer Notes:

1) N/A