

## ROOF JOIST BRIDGING DETAILS

- BI9000 - FRAMING PLAN NOTE
- BI9001 - ROOF COVER PAGE
- BI9002 - ROOF FRAMING PLAN NOTES
- BI9003 - WELDED ROOF BRIDGING
- BI9004 - WELDED ROOF BRIDGING TERMINATION
- BI9005 - WELDED ROOF BRIDGING (STANDING SEAM ONLY)
- BI9006 - BOLTED ROOF BRIDGING
- BI9007 - BOLTED HORIZONTAL BRIDGING
- BI9008 - BOLTED DIAGONAL BRIDGING
- BI9009 - BOLTED BRIDGING CLIP STYLES

## MEZZANINE JOIST BRIDGING DETAILS

- BI9026 - MEZZANINE COVER PAGE
  - BI9027 - MEZZANINE FRAMING PLAN NOTES
  - BI9028 - STANDARD MEZZANINE BRIDGING
  - BI9029 - WELDED MEZZANINE BRIDGING TERMINATIONS
  - BI9030 - BOLTED MEZZANINE BRIDGING TERMINATIONS
  - BI9031 - BOLTED MEZZANINE BRIDGING
  - BI9032 - BOLTED MEZZANINE BRIDGING
-

BI9000 - FRAMING PLAN NOTE

[Download the DWG file by clicking here.](#)

THIS IS THE JOIST FRAMING PLAN. FOR ALL JOIST BRIDGING REQUIREMENTS AND INSTALLATION DETAILS, REFERENCE THE SEPARATE JOIST BRIDGING PACKET.

Detailer Notes:

1) N/A

BI9001 - ROOF COVER PAGE

[Download the DWG file by clicking here.](#)

# ROOF JOIST BRIDGING REQUIREMENTS AND INSTALLATION DETAILS

**ROOF JOIST BRIDGING ERECTION NOTE:**

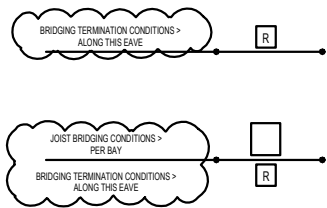
*The manufacturer of the roof joists under the Nucor Building Group Contract for this project has determined the bridging requirements for stability and safety. The joist manufacturer has selected a bridging "Condition" for each bay of joist and has identified these conditions on the Joist Bridging Plan. Cross reference the plan with the details to determine the bridging requirements in each joist bay.*

**Detailer Notes:**

1) N/A

BI9002 - ROOF FRAMING PLAN NOTES

[Download the DWG file by clicking here.](#)



ERECTION NOTE:  
IDENTIFY THE JOIST BRIDGING 'CONDITIONS' ON THIS PLAN FOR EACH BAY, AND REFER TO THE FOLLOWING DETAIL SHEETS FOR SPECIFIC INSTALLATION AND TERMINATION GUIDANCE. JOIST MUST BE ERECTED IN ACCORDANCE WITH O.S.H.A. SAFETY REGULATIONS AND WELDING PERFORMED BY A.I.W.S. QUALIFIED WELDERS FOR THE WELDING PROCESSES AND POSITIONS INDICATED.

JOIST BRIDGING PLAN

Detailer Notes:

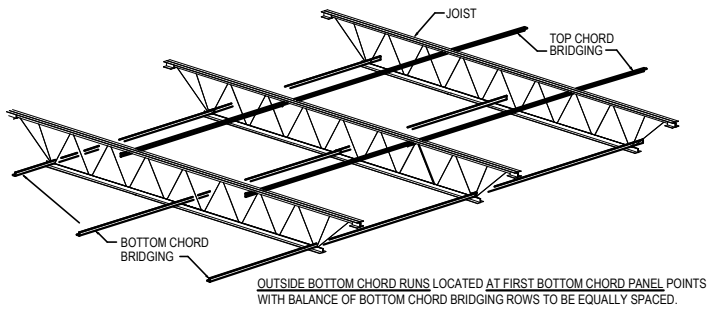
- 1) CONDITION "R" SHOWN FOR REFERENCE ONLY, ADJUST AS REQUIRED

BI9003 - WELDED ROOF BRIDGING

[Download the DWG file by clicking here.](#)

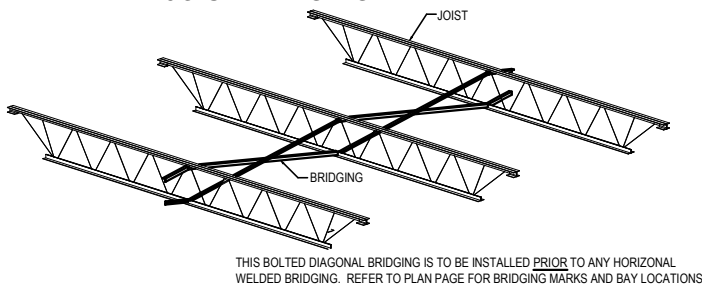
## WELDED HORIZONTAL

### JOIST BRIDGING DETAIL



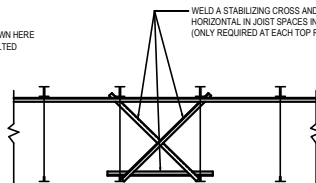
## BOLTED DIAGONAL

### JOIST BRIDGING DETAIL

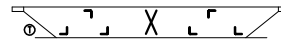


**ERECTION NOTE:**  
WELDED STABILIZING CROSSES SHOWN HERE ARE NOT TO BE CONFUSED WITH BOLTED DIAGONAL BRIDGING.

WELD A STABILIZING CROSS AND ADDITIONAL STABILIZATION HORIZONTAL IN JOIST SPACES INDICATED WITH \*\* ON THE BRIDGING PLAN. (ONLY REQUIRED AT EACH TOP RUN OF HORIZONTAL BRIDGING U.N.O.)

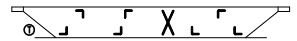


### CONDITION X



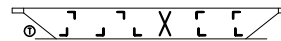
### CONDITION A

2 ROWS H TOP, 4 ROWS H BOTTOM, 1 ROW X



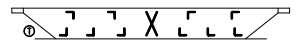
### CONDITION B

3 ROWS H TOP, 4 ROWS H BOTTOM, 1 ROW X



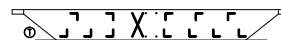
### CONDITION C

4 ROWS H TOP, 5 ROWS H BOTTOM, 1 ROW X



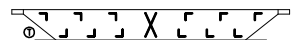
### CONDITION D

4 ROWS H TOP, 6 ROWS H BOTTOM, 1 ROW X



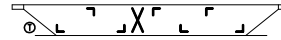
### CONDITION E

5 ROWS H TOP, 7 ROWS H BOTTOM, 1 ROW X



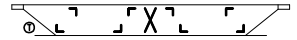
### CONDITION F

6 ROWS H TOP & 6 ROWS H BOTTOM, 1 ROW X



### CONDITION G

3 ROWS H TOP, 4 ROWS H BOTTOM, 1 ROW X



### CONDITION H

4 ROWS H TOP, 4 ROWS H BOTTOM, 1 ROW X



### CONDITION J

OTHER



### CONDITION K

OTHER

### BRIDGING REQUIREMENT CONDITIONS FOR ROOF

#### NOTES:

H = HORIZONTAL WELDED BRIDGING  
X = BOLTED DIAGONAL BRIDGING

-LOCATE THE FIRST ROW OF BOTTOM CHORD BRIDGING AT THE FIRST BOTTOM CHORD PANEL POINT, AT EACH END.

-TOP AND BOTTOM BRIDGING ROWS SHOULD BE EQUALLY SPACED AND ARE INDEPENDENT OF EACH OTHER, AND MAY NOT LINE UP

BI9003

#### Detailer Notes:

1) THIS DETAIL CAN BE USED FOR STANDING SEAM ROOFS, BUT CONSIDER USING DETAIL BI9005 TO HELP ELIMINATE CONFUSION IN THE FIELD ABOUT PROPER WELD LOCATIONS FOR HORIZONTAL BRIDGING.

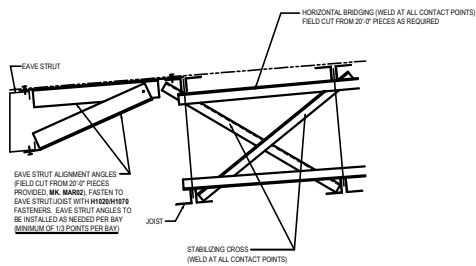
BI9004 - WELDED ROOF BRIDGING TERMINATION

[Download the DWG file by clicking here.](#)

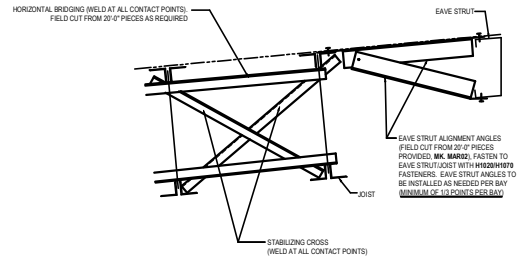
**WELDED HORIZONTAL BRIDGING TERMINATION CONDITIONS**

**NOTE:**

IF TOP & BOTTOM CHORD HORIZONTAL BRIDGING DOES NOT LINE UP:  
LOCATE BRIDGING "X" AT BOTH TOP & BOTTOM CHORD HORIZONTAL BRIDGING LOCATIONS.



**CONDITION R**  
LOW EAVE AT EAVE STRUT

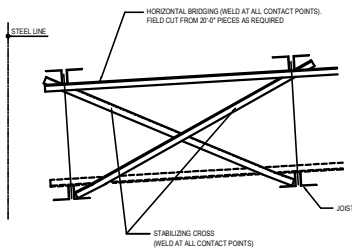


**CONDITION X**  
HIGH EAVE AT EAVE STRUT

NOTES: TERMINATION CROSS BRIDGING WILL BE LOCATED AT ALL TOP & BOTTOM CHORD ROWS. BRIDGING DOES NOT TYPICALLY LINE UP FROM TOP TO BOTTOM. PROVIDE ACCESSORIES TO ACCOMMODATE.

**NOTE:**

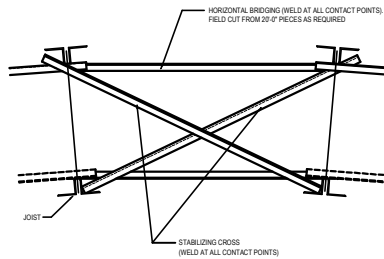
IF TOP & BOTTOM CHORD HORIZONTAL BRIDGING DOES NOT LINE UP:  
LOCATE BRIDGING "X" AT BOTH TOP & BOTTOM CHORD HORIZONTAL BRIDGING LOCATIONS.



**CONDITION S**  
LOW EAVE AT SIMPLE WALL

**NOTE:**

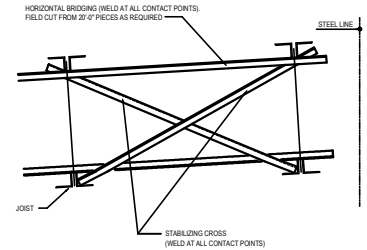
IF TOP & BOTTOM CHORD HORIZONTAL BRIDGING DOES NOT LINE UP:  
LOCATE BRIDGING "X" AT BOTH TOP & BOTTOM CHORD HORIZONTAL BRIDGING LOCATIONS.



**CONDITION T**  
STANDARD RIDGE CONDITION

**NOTE:**

IF TOP & BOTTOM CHORD HORIZONTAL BRIDGING DOES NOT LINE UP:  
LOCATE BRIDGING "X" AT BOTH TOP & BOTTOM CHORD HORIZONTAL BRIDGING LOCATIONS.



**CONDITION U**  
HIGH EAVE AT SIMPLE WALL

BI9004

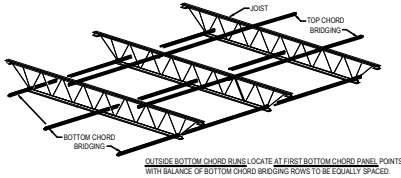
Detailer Notes:

1) N/A

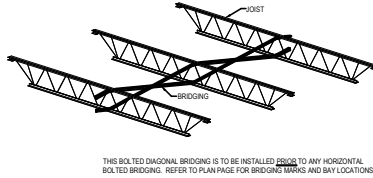
BI9005 - WELDED ROOF BRIDGING (STANDING SEAM ONLY)

[Download the DWG file by clicking here.](#)

**WELDED HORIZONTAL**  
JOIST BRIDGING DETAIL

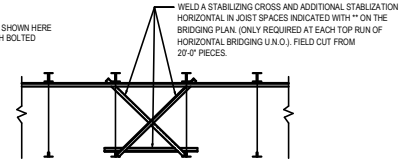


**BOLTED DIAGONAL**  
JOIST BRIDGING DETAIL



**ERECTION NOTE:**

WELDED STABILIZING CROSSES SHOWN HERE ARE NOT TO BE CONFUSED WITH BOLTED DIAGONAL BRIDGING.



**CONDITION X**

BI9005

Detailer Notes:

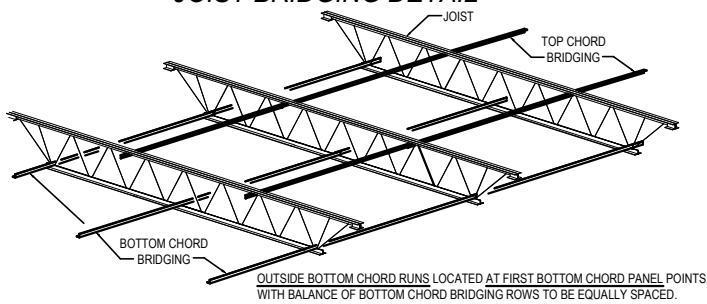
- 1) SEE THE WELDED BRIDGING EXAMPLE DRAWINGS. ALL THE JOISTS ARE SAVED AS BLOCKS IN MODEL SPACE. FOR LARGER PROJECTS YOU MAY NEED MORE THAN ONE OF THESE DETAILS.
- 2) THIS DETAIL IS TO ONLY BE USED AT STANDING SEAM ROOFS. THIS IS TO HELP THE ERECTORS TO PROPERLY LOCATE WELDED LOCATIONS OF THE HORIZONTAL BRIDGING.

BI9006 - BOLTED ROOF BRIDGING

[Download the DWG file by clicking here.](#)

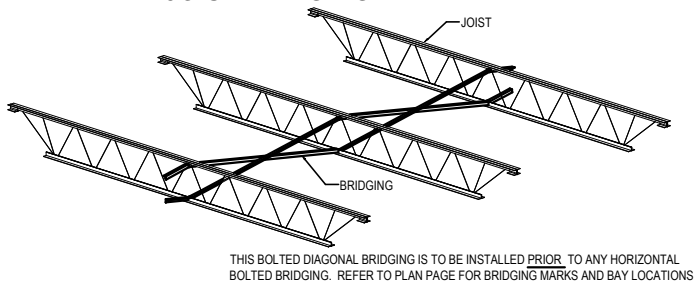
## BOLTED HORIZONTAL

### JOIST BRIDGING DETAIL



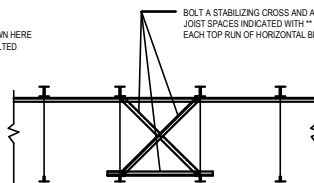
## BOLTED DIAGONAL

### JOIST BRIDGING DETAIL

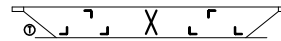


**ERECTION NOTE:**  
BOLTED STABILIZING CROSSES SHOWN HERE ARE NOT TO BE CONFUSED WITH BOLTED DIAGONAL BRIDGING.

BOLT A STABILIZING CROSS AND ADDITIONAL STABILIZATION HORIZONTAL IN THE JOIST SPACES INDICATED WITH "\*" ON THE BRIDGING PLAN. (ONLY REQUIRED AT EACH TOP RUN OF HORIZONTAL BRIDGING U.N.O.).

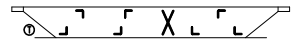


**CONDITION X**



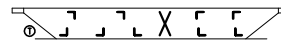
**CONDITION A**

2 ROWS H TOP, 4 ROWS H BOTTOM, 1 ROW X



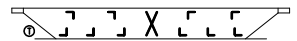
**CONDITION B**

3 ROWS H TOP, 4 ROWS H BOTTOM, 1 ROW X



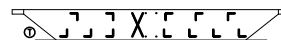
**CONDITION C**

4 ROWS H TOP, 5 ROWS H BOTTOM, 1 ROW X



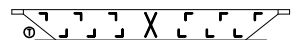
**CONDITION D**

4 ROWS H TOP, 6 ROWS H BOTTOM, 1 ROW X



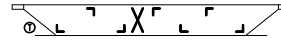
**CONDITION E**

5 ROWS H TOP, 7 ROWS H BOTTOM, 1 ROW X



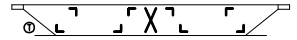
**CONDITION F**

6 ROWS H TOP & 6 ROWS H BOTTOM, 1 ROW X



**CONDITION G**

3 ROWS H TOP, 4 ROWS H BOTTOM, 1 ROW X



**CONDITION H**

4 ROWS H TOP, 4 ROWS H BOTTOM, 1 ROW X



**CONDITION J**

OTHER



**CONDITION K**

OTHER

### BRIDGING REQUIREMENT CONDITIONS FOR ROOF

**NOTES:**

H = HORIZONTAL WELDED BRIDGING  
X = BOLTED DIAGONAL BRIDGING

-LOCATE THE FIRST ROW OF BOTTOM CHORD BRIDGING AT THE FIRST BOTTOM CHORD PANEL POINT, AT EACH END.

BI9006

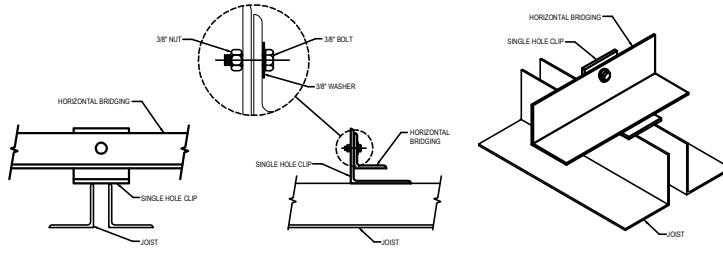
**Detailer Notes:**

1) N/A



**BI9007 - BOLTED HORIZONTAL BRIDGING**

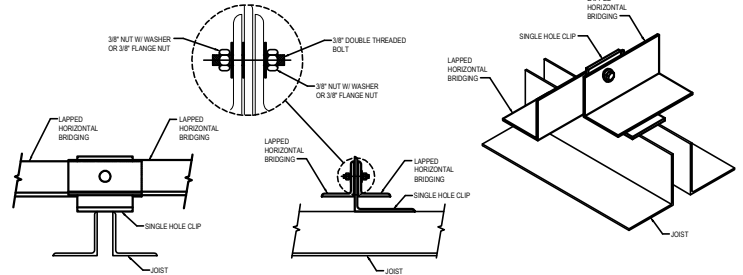
[Download the DWG file by clicking here.](#)



**BRIDGING DETAIL  
AT NON-LAPPED CONDITION**

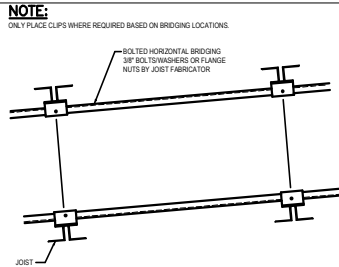
NOTE: USE (1) 3/8\" DIA. BOLT, NUT AND WASHER.  
WASHERS ARE NOT REQUIRED WHERE A FLANGED NUT (WHEN PROVIDED) IS USED

**BOLTED HORIZONTAL BRIDGING**

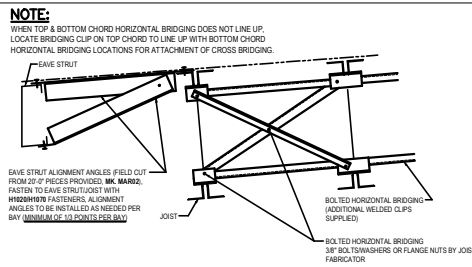


**BRIDGING DETAIL  
AT LAPPED CONDITION**

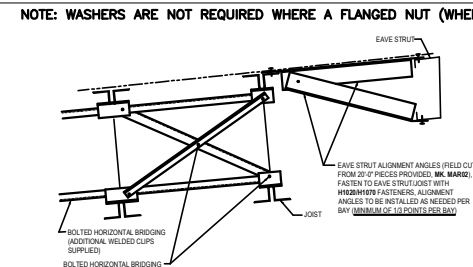
NOTE: USE (1) 3/8\" DIA. DOUBLE THREADED BOLT, (2) NUTS  
AND (2) WASHERS.



**CONDITION M  
STANDARD**



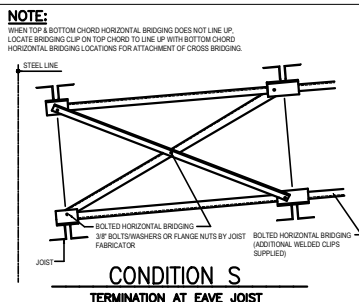
**CONDITION R  
LOW EAVE AT EAVE STRUT**



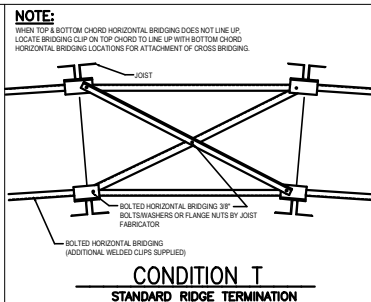
**CONDITION X  
HIGH EAVE AT EAVE STRUT**

BI9007

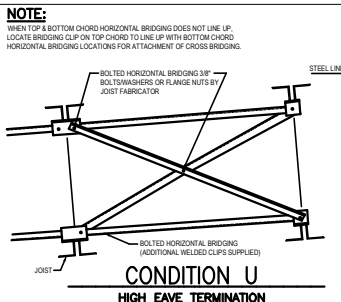
NOTES: TERMINATION CROSS BRIDGING WILL BE LOCATED AT ALL TOP & BOTTOM CHORD ROWS. BRIDGING DOES NOT TYPICALLY LINE UP FROM TOP TO BOTTOM. PROVIDE ACCESSORIES TO ACCOMMODATE.



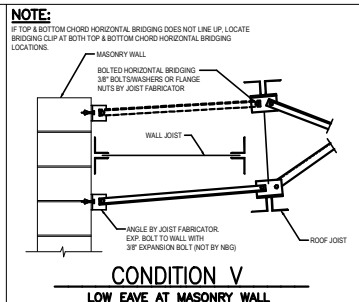
**CONDITION S  
TERMINATION AT EAVE JOIST**



**CONDITION T  
STANDARD RIDGE TERMINATION**



**CONDITION U  
HIGH EAVE TERMINATION**



**CONDITION V  
LOW EAVE AT MASONRY WALL**

**Detailer Notes:**

1) N/A

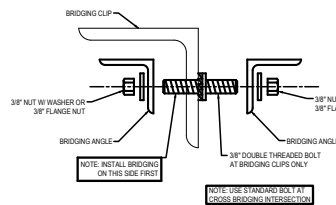
**BI9008 - BOLTED DIAGONAL BRIDGING**

[Download the DWG file by clicking here.](#)

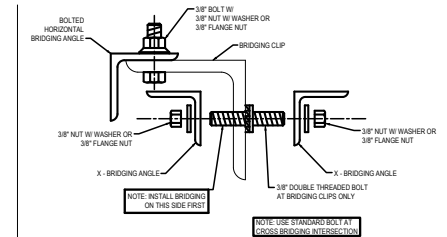
**BOLTED DIAGONAL BRIDGING**

REFERENCE THESE DETAILS ONLY IF BOLTED  
DIAGONAL BRIDGING IS SPECIFIED IN THE BAY.

NOTE: WASHERS ARE NOT REQUIRED WHERE A FLANGED NUT (WHEN PROVIDED) IS USED

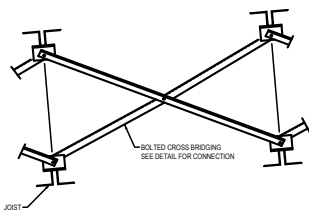


**CONDITION 1**  
BOLT AT SINGLE HOLE BRIDGING CLIP

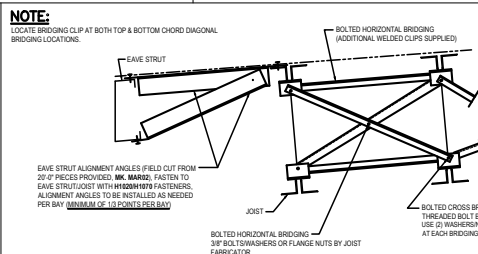


**CONDITION 2**  
BOLT AT SINGLE HOLE BRIDGING CLIP

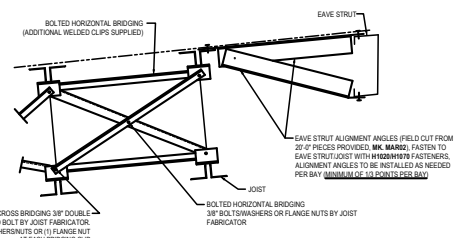
NOTE: CONDITION MAY VARY BASED ON JOIST SUPPLIER



**CONDITION M**  
STANDARD

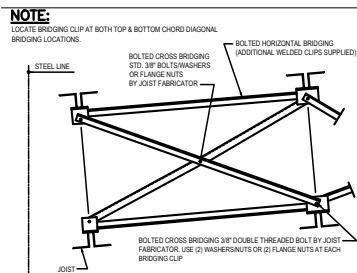


**CONDITION R**  
LOW EAVE AT EAVE STRUT

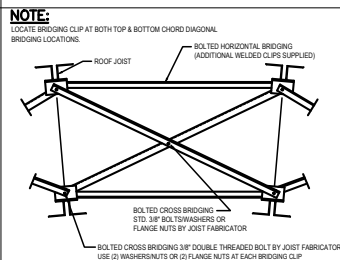


**CONDITION X**  
HIGH EAVE AT EAVE STRUT

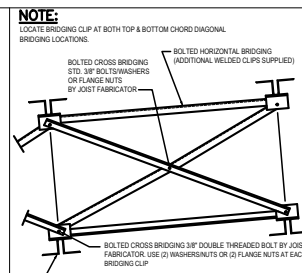
BI9008



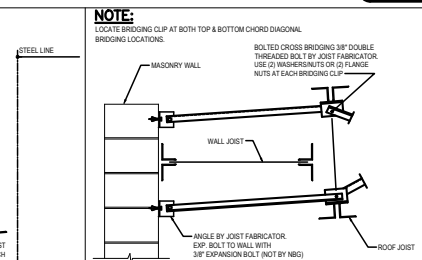
**CONDITION S**  
TERMINATION AT EAVE JOIST



**CONDITION T**  
STANDARD RIDGE TERMINATION



**CONDITION U**  
HIGH EAVE TERMINATION



**CONDITION V**  
LOW EAVE AT MASONRY WALL

**Detailer Notes:**

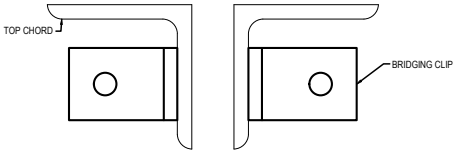
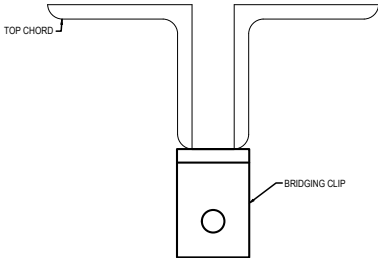
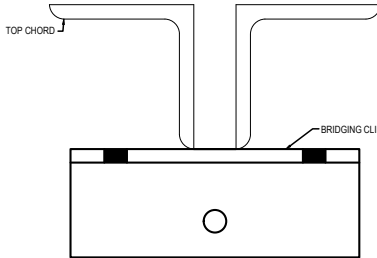
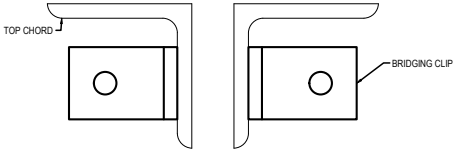
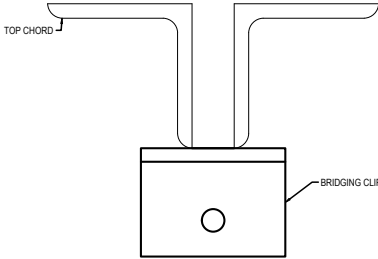
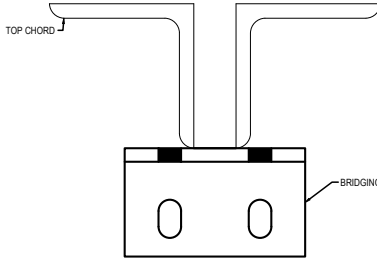
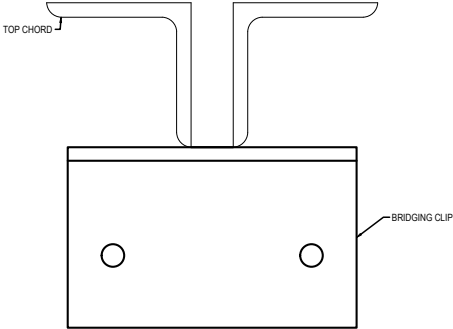
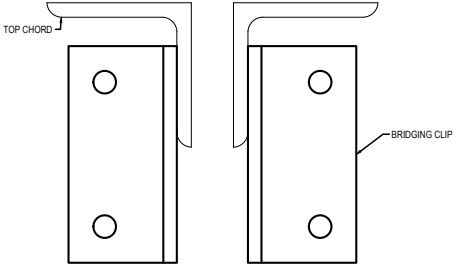
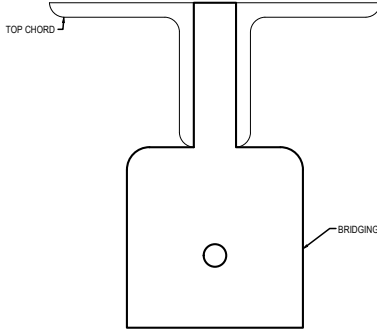
- 1) CONDITION STYLES VARY PER VULCRAFT DIVISION.

BI9009 - BOLTED BRIDGING CLIP STYLES

[Download the DWG file by clicking here.](#)

**BOLTED BRIDGING CLIP STYLES**

NOTE: STYLES MAY VARY DEPENDING ON JOIST SUPPLIER.  
(TOP CHORD SHOWN / BOTTOM CHORD SIMILAR)

<p><b>TYPE 1A</b></p> 	<p><b>TYPE 2A</b></p> 	<p><b>TYPE 2X</b></p> 
<p><b>TYPE 1B</b></p> 	<p><b>TYPE 2B</b></p> 	<p><b>TYPE 3B</b></p> 
<p><b>TYPE 3C</b></p> 	<p><b>TYPE 8C</b></p> 	<p><b>TYPE 5A</b></p> 

BI9009

Detailer Notes:

- 1) BRIDGING CLIP STYLES VARY PER VULCRAFT DIVISION.

BI9026 - MEZZANINE COVER PAGE

[Download the DWG file by clicking here.](#)

# MEZZANINE BRIDGING REQUIREMENTS AND INSTALLATION DETAILS

MEZZANINE JOIST BRIDGING ERECTION NOTE:

*The manufacturer of the mezzanine joists under the Nucor Building Group Contract for this project has determined the bridging requirements for stability and safety. The joist manufacturer has selected a bridging "Condition" for each bay of joist and has identified these conditions on the Joist Bridging Plan. Cross reference the plan with the details to determine the bridging requirements in each joist bay.*

Detailer Notes:

1) N/A

BI9027 - MEZZANINE FRAMING PLAN NOTES

[Download the DWG file by clicking here.](#)



**ERECTION NOTE:**  
IDENTIFY THE JOIST BRIDGING 'CONDITIONS' ON THIS PLAN FOR EACH BAY, AND REFER TO THE FOLLOWING DETAIL SHEETS FOR SPECIFIC INSTALLATION AND TERMINATION GUIDANCE. JOIST MUST BE ERECTED IN ACCORDANCE WITH O.S.H.A. SAFETY REGULATIONS AND WELDING PERFORMED BY A.W.S. QUALIFIED WELDERS FOR THE WELDING PROCESSES AND POSITIONS INDICATED.

JOIST BRIDGING PLAN

Detailer Notes:

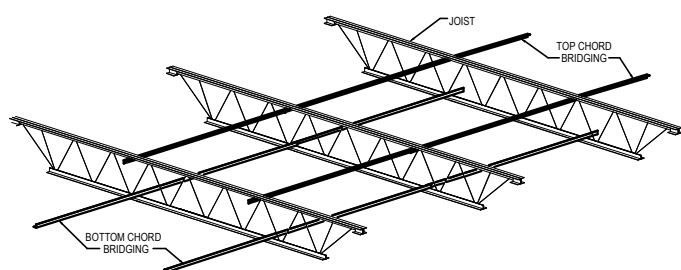
- 1) CONDITION "R" SHOWN FOR REFERENCE ONLY, ADJUST AS REQUIRED.

BI9028 - STANDARD MEZZANINE BRIDGING

[Download the DWG file by clicking here.](#)

## WELDED HORIZONTAL

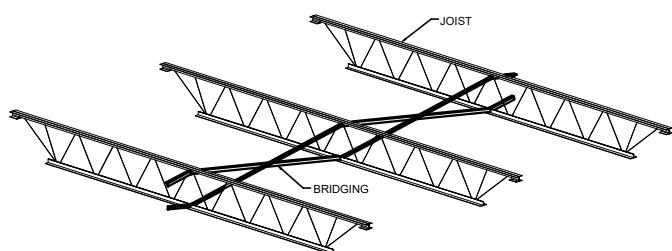
### JOIST BRIDGING DETAIL



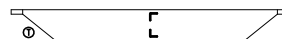
WELD HORIZONTAL BRIDGIN AT ALL CONTACT POINTS.  
FIELD CUT FROM 20'-0" PIECES AS REQUIRED.

## BOLTED DIAGONAL

### JOIST BRIDGING DETAIL



THIS BOLTED DIAGONAL BRIDGING IS TO BE INSTALLED PRIOR TO ANY  
HORIZONTAL WELDED BRIDGING. REFER TO PLAN PAGE FOR RIDGING MARKS  
AND BAY LOCATIONS.



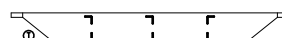
#### CONDITION A

1 ROW H TOP, 1 ROW H BOTTOM



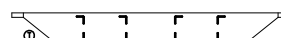
#### CONDITION B

2 ROWS H TOP, 2 ROWS H BOTTOM



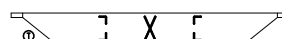
#### CONDITION C

3 ROWS H TOP, 3 ROWS H BOTTOM



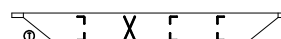
#### CONDITION D

4 ROWS H TOP, 4 ROWS H BOTTOM



#### CONDITION E

2 ROWS H TOP & BOTTOM, 1 ROW X



#### CONDITION F

3 ROWS H TOP & BOTTOM, 1 ROW X



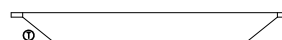
#### CONDITION G

OTHER



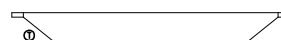
#### CONDITION H

OTHER



#### CONDITION J

OTHER



#### CONDITION K

OTHER

### BRIDGING REQUIREMENT CONDITIONS FOR MEZZANINE

**NOTES:** H = HORIZONTAL WELDED BRIDGING  
X = BOLTED DIAGONAL BRIDGING

- TOP AND BOTTOM BRIDGING ROWS SHOULD BE EQUALLY SPACED  
AND BOTTOM CHORD BRIDGING IS ALIGNED WITH TOP CHORD BRIDGING.

BI9028

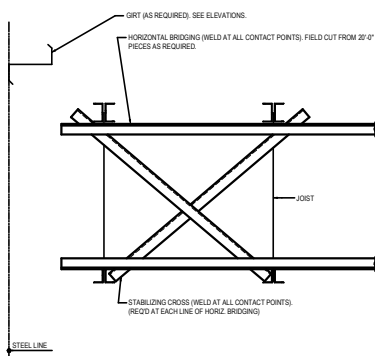
Detailer Notes:

1) N/A

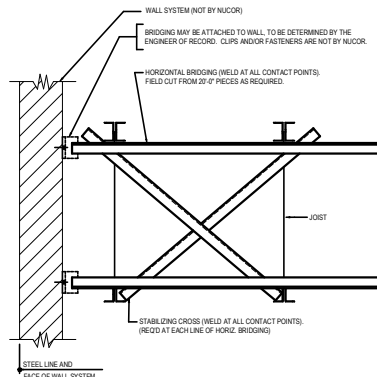
BI9029 - WELDED MEZZANINE BRIDGING TERMINATIONS

[Download the DWG file by clicking here.](#)

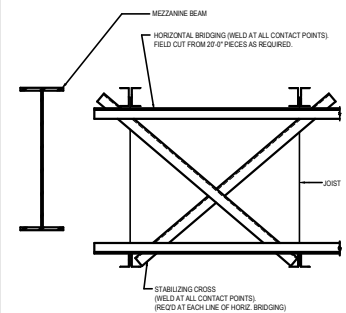
**WELDED HORIZONTAL BRIDGING TERMINATION CONDITIONS**  
REFERENCE THESE DETAILS ONLY IF WELDED DIAGONAL BRIDGING IS SPECIFIED IN THE BAY.



**CONDITION N**  
MEZZANINE TERMINATION  
@ GIRT WALL

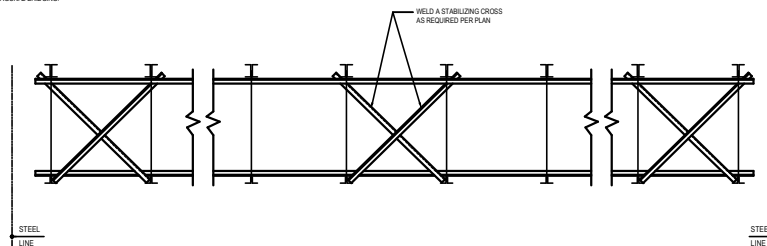


**CONDITION P**  
MEZZANINE TERMINATION  
@ ALTERNATE WALL



**CONDITION R**  
MEZZANINE TERMINATION  
@ MEZZANINE BEAM

**ERECTION NOTE:**  
WELDED STABILIZING CROSSES SHOWN HERE ARE NOT TO BE  
CONFUSED WITH BOLTED DIAGONAL BRIDGING.



**CONDITION S**

BI9029

**Detailer Notes:**

- 1) N/A

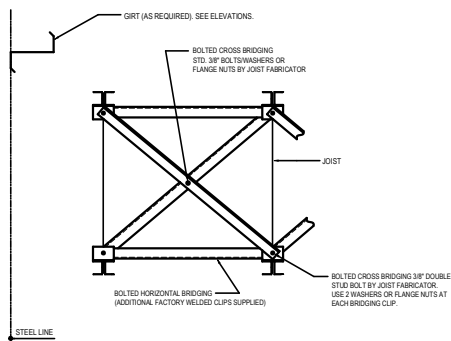
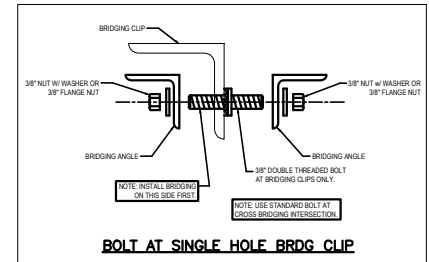
**BI9030 - BOLTED MEZZANINE BRIDGING TERMINATIONS**

[Download the DWG file by clicking here.](#)

**BOLTED DIAGONAL BRIDGING TERMINATION CONDITIONS**

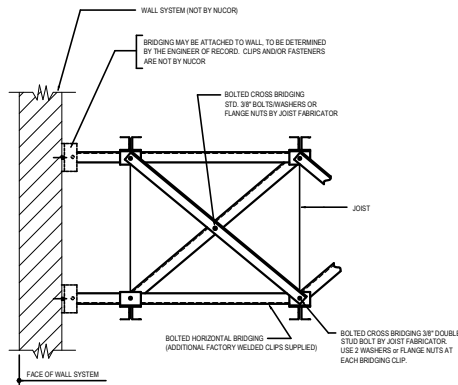
REFERENCE THESE DETAILS ONLY IF BOLTED DIAGONAL BRIDGING IS SPECIFIED IN THE BAY.

NOTE: WASHERS ARE NOT REQUIRED WHERE A FLANGED NUT (WHEN PROVIDED) IS USED



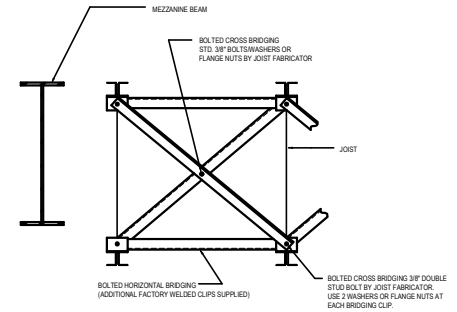
**CONDITION N**

MEZZANINE TERMINATION  
@ GIRT WALL



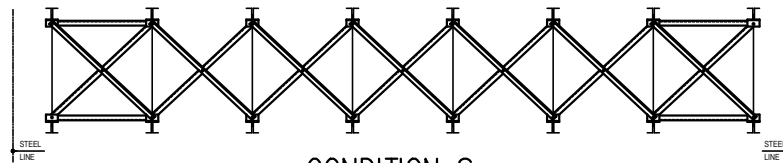
**CONDITION P**

MEZZANINE TERMINATION  
@ ALTERNATE WALL



**CONDITION R**

MEZZANINE TERMINATION  
@ MEZZANINE BEAM



**CONDITION S**

BI9030

**Detailer Notes:**

- 1) N/A

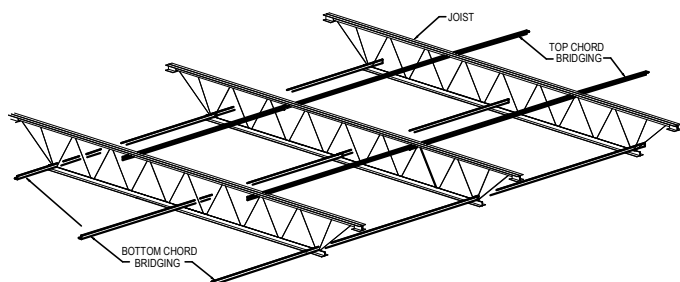


BI9031 - BOLTED MEZZANINE BRIDGING

[Download the DWG file by clicking here.](#)

## BOLTED HORIZONTAL

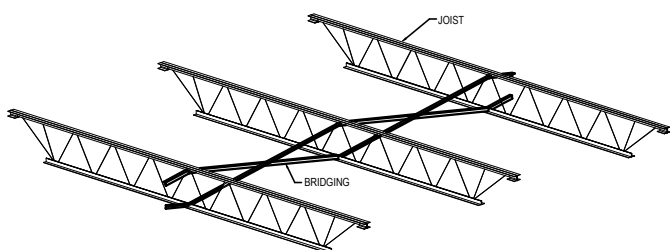
### JOIST BRIDGING DETAIL



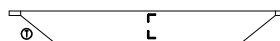
OUTSIDE BOTTOM CHORD RUNS LOCATED AT FIRST BOTTOM CHORD PANEL POINTS.  
WITH BALANCE OF BOTTOM CHORD BRIDGING ROWS TO BE EQUALLY SPACED.

## BOLTED DIAGONAL

### JOIST BRIDGING DETAIL



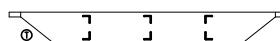
THIS BOLTED DIAGONAL BRIDGING IS TO BE INSTALLED PRIOR TO ANY HORIZONTAL  
BOLTED BRIDGING. REFER TO PLAN PAGE FOR BRIDGING MARKS AND BAY LOCATIONS



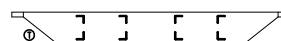
**CONDITION A**  
1 ROW H TOP, 1 ROW H BOTTOM



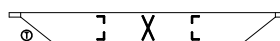
**CONDITION B**  
2 ROWS H TOP, 2 ROWS H BOTTOM



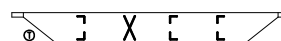
**CONDITION C**  
3 ROWS H TOP, 3 ROWS H BOTTOM



**CONDITION D**  
4 ROWS H TOP, 4 ROWS H BOTTOM



**CONDITION E**  
2 ROWS H TOP & BOTTOM, 1 ROW X



**CONDITION F**  
3 ROWS H TOP & BOTTOM, 1 ROW X



**CONDITION G**  
OTHER



**CONDITION H**  
OTHER



**CONDITION J**  
OTHER



**CONDITION K**  
OTHER

### BRIDGING REQUIREMENT CONDITIONS FOR MEZZANINE

**NOTES:** H = HORIZONTAL BOLTED BRIDGING  
X = BOLTED DIAGONAL

- TOP AND BOTTOM BRIDGING ROWS SHOULD BE EQUALLY SPACED.  
AND BOTTOM CHORD BRIDGING IS ALIGNED WITH TOP CHORD BRIDGING.

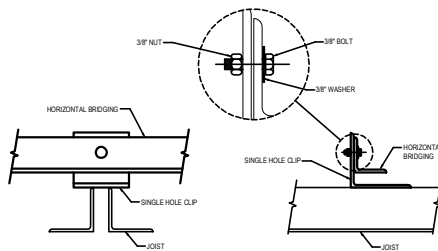
BI9031

Detailer Notes:

1) N/A

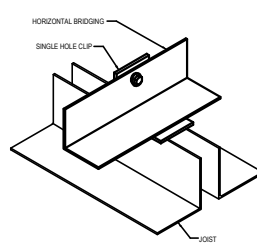
**BI9032 - BOLTED MEZZANINE BRIDGING**

[Download the DWG file by clicking here.](#)

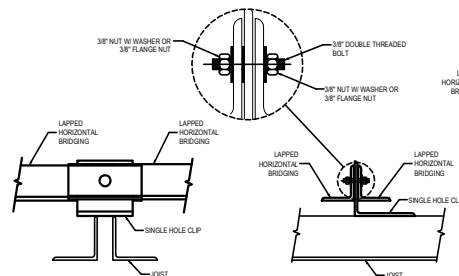


**BRIDGING DETAIL  
AT NON-LAPPED CONDITION**

NOTE: USE (1) 3/8\" DIA. BOLT, NUT AND WASHER.  
WASHERS ARE NOT REQUIRED WHERE A FLANGED NUT (WHEN PROVIDED) IS USED

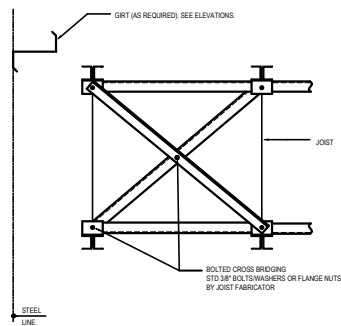


**BOLTED HORIZONTAL BRIDGING**

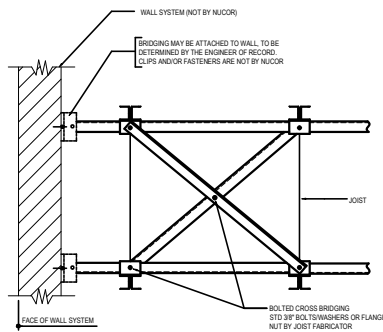


**BRIDGING DETAIL  
AT LAPPED CONDITION**

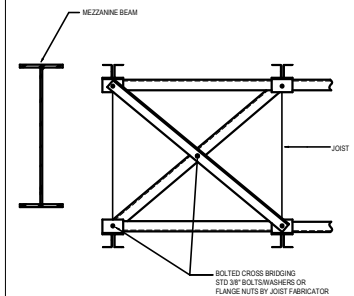
NOTE: USE (1) 3/8\" DIA. DOUBLE THREADED BOLT, (2) NUTS AND (2) WASHERS.



**CONDITION N  
MEZZANINE TERMINATION @ GIRT WALL**

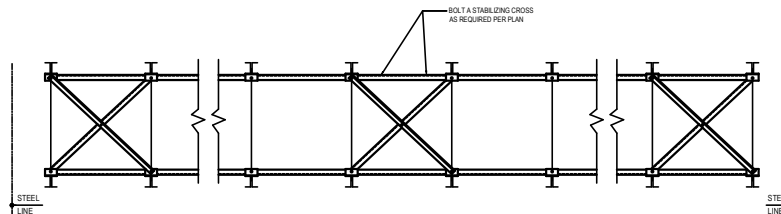


**CONDITION P  
MEZZANINE TERMINATION @ ALTERNATE WALL**



**CONDITION R  
MEZZANINE TERMINATION @ MEZZANINE BEAM**

**CONDITION S**



**ERECTION NOTE:**  
BOLTED STABILIZING CROSSES SHOWN HERE ARE NOT TO BE  
CONFUSED WITH BOLTED DIAGONAL BRIDGING.

BI9032

**Detailer Notes:**

- 1) N/A