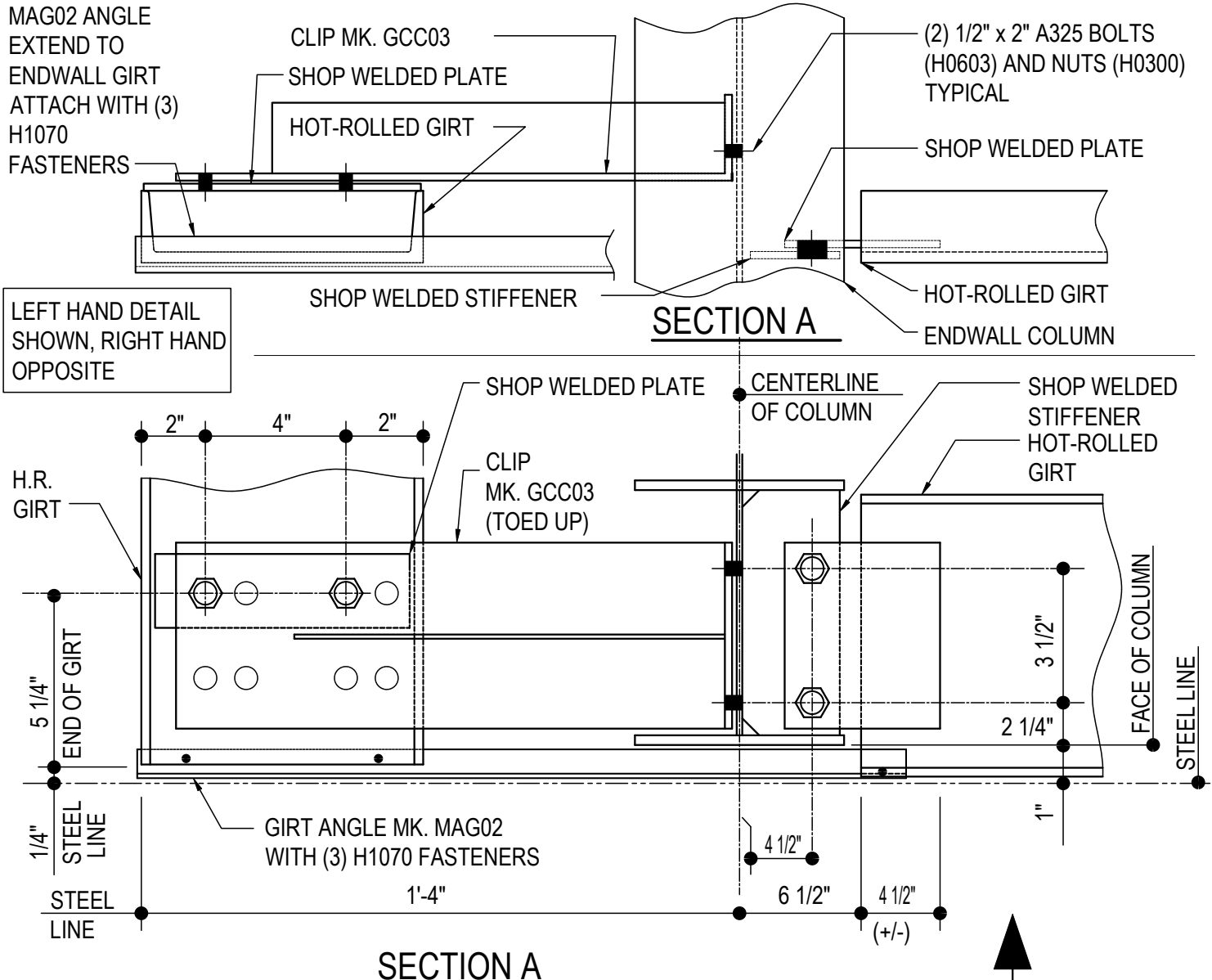


INSET GIRT DETAILS

- CE0015 - INSET CORNER 8" H.R. GIRT DETAIL
- CE0110 - INSET CORNER COLUMN GIRT DETAIL
- CE0241 - INSET CORNER GIRT DETAIL
- CE1010 - INSET CORNER WELDED GIRT DETAIL
- CE1015 - INSET BOLTED CORNER GIRT DETAIL
- CE1030 - INSET TO INSET CORNER DETAIL

CE0015 - INSET CORNER 8" H.R. GIRT DETAIL

[Download the DWG file by clicking here.](#)



HOT-ROLLED GIRT CORNER DETAIL

8" HOT-ROLLED GIRT AT INSET CORNER.

NOTE: USE (6) 1/2" x 2" A325 BOLTS (MK. H0603) & NUTS (MK. H0300)
REFERENCE ERECTOR NOTE FOR TYPICAL WASHER REQUIREMENTS

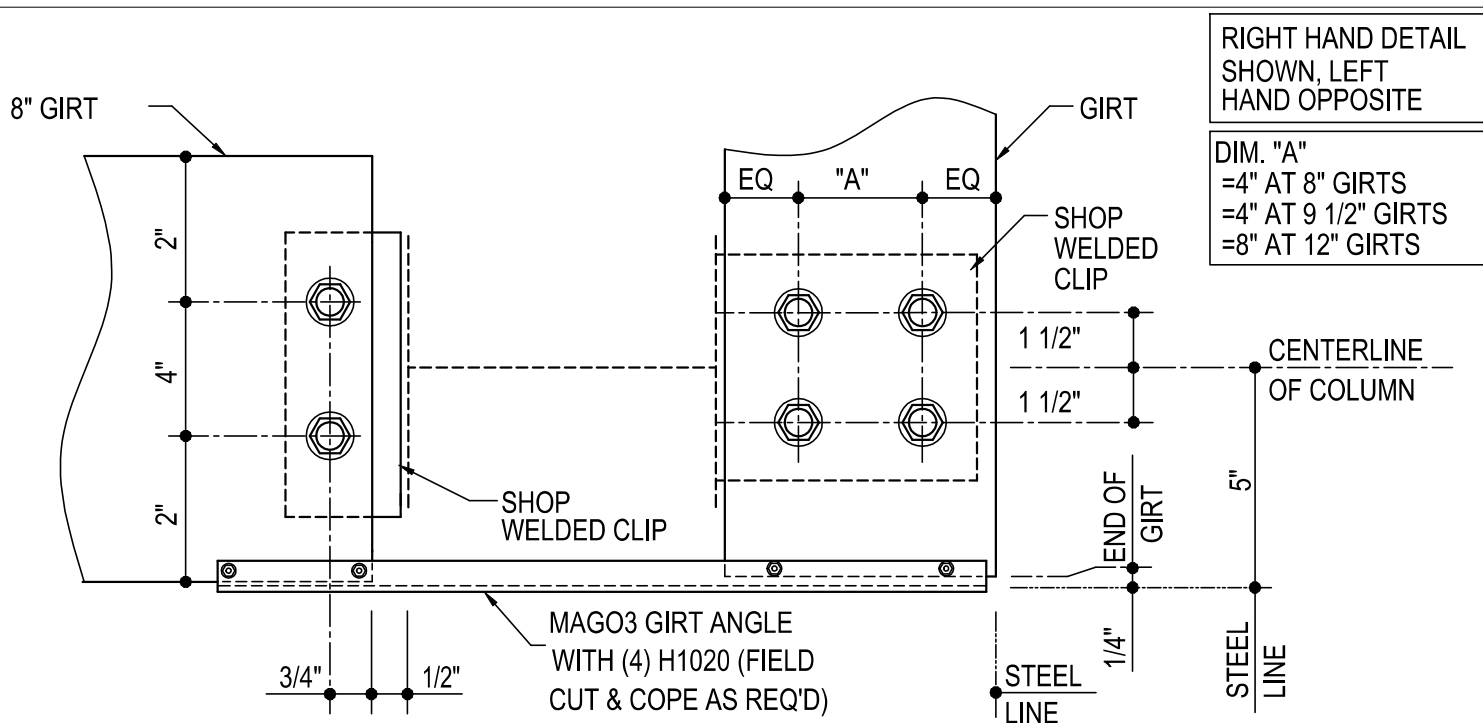
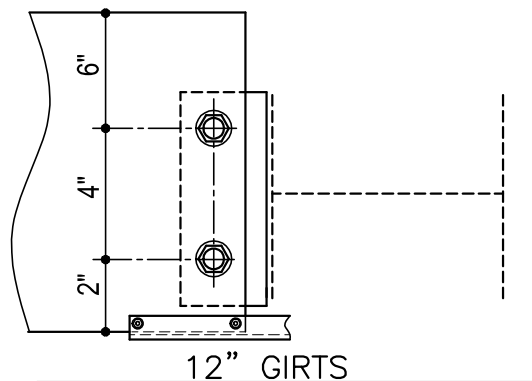
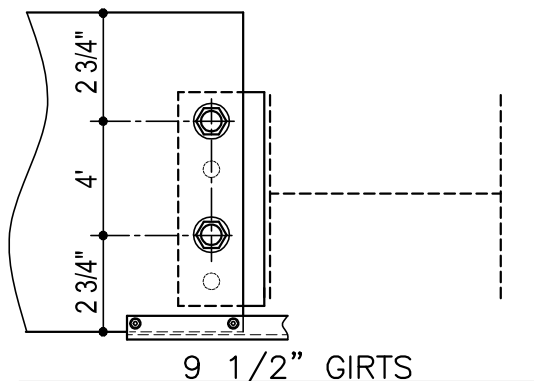
CE0015

Detailer Notes:

- 1) DETAIL FOR HOT ROLLED & BUILT-UP COLUMN ONLY
- 2) CLIP TO HR GIRT & STIFFENER: GCP06
- 3) STIFFENER TO COLUMN: STFBR
- 4) CLIP TO HR GIRT: HCS08

CE0110 - INSET CORNER COLUMN GIRT DETAIL

[Download the DWG file by clicking here.](#)



RIGHT HAND DETAIL
SHOWN, LEFT
HAND OPPOSITE

DIM. "A"
=4" AT 8" GIRTS
=4" AT 9 1/2" GIRTS
=8" AT 12" GIRTS

INSET CORNER COLUMN GIRT DETAIL

NOTE: USE (6) 1/2" x 1 1/4" A307 BOLTS H0500/NUTS H0400
REFERENCE STANDARD WASHER DETAIL FOR TYPICAL
WASHER REQUIREMENTS

CE0110

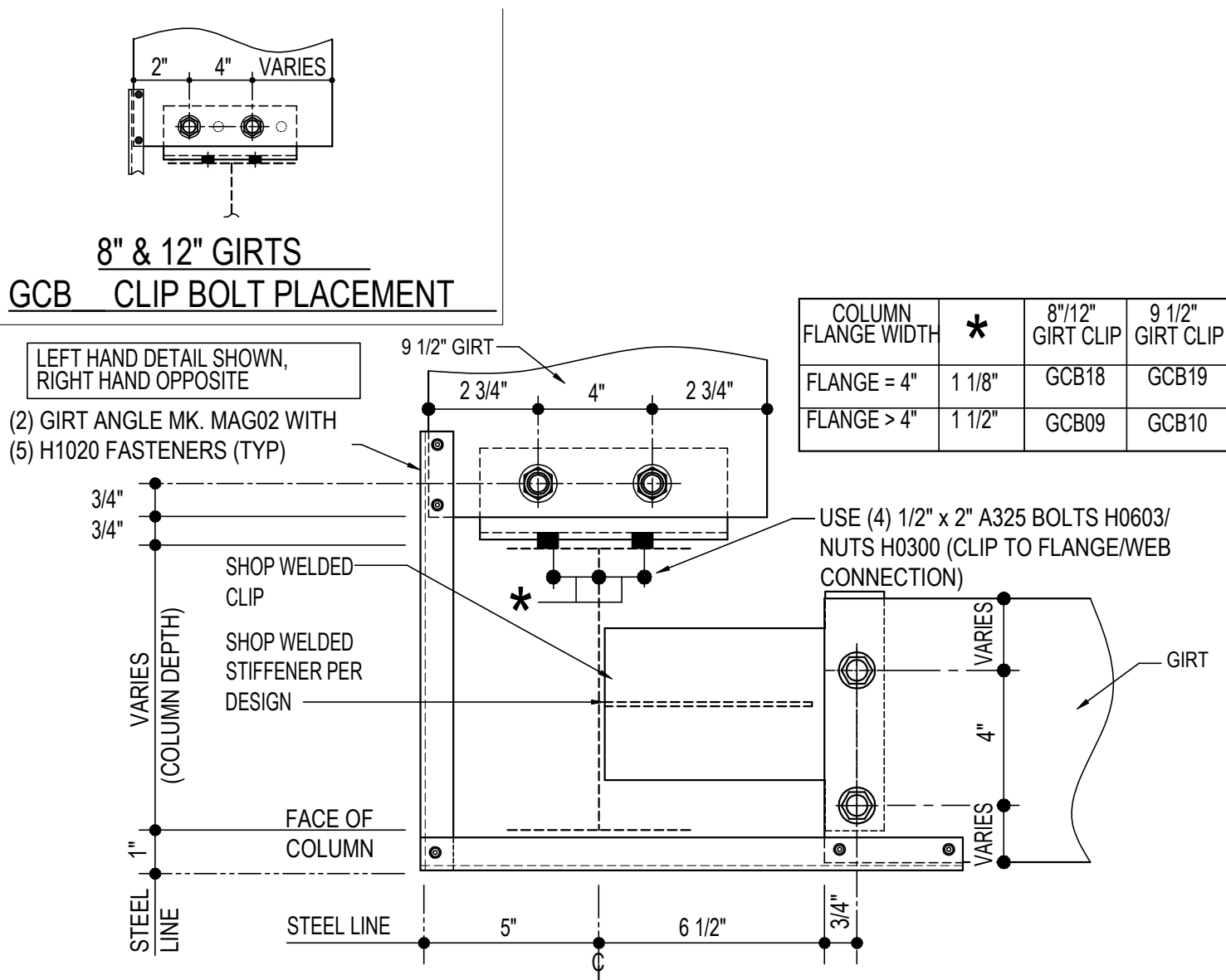
Detailer Notes:

1) (4) HOLE WELDED CLIP:
8" - PCU01
9 1/2" - GCB62
12" - GCB12

2) (2) HOLE WELDED CLIP:
8" - GRC09
9 1/2" - GRC03
12" - GRC09

CE0241 - INSET CORNER GIRT DETAIL

[Download the DWG file by clicking here.](#)



INSET CORNER GIRT DETAIL

NOTE: USE (4) 1/2" x 1 1/4" A307 BOLTS H0500/ NUTS H0400. REFERENCE STANDARD WASHER DETAIL FOR TYPICAL WASHER REQUIREMENTS

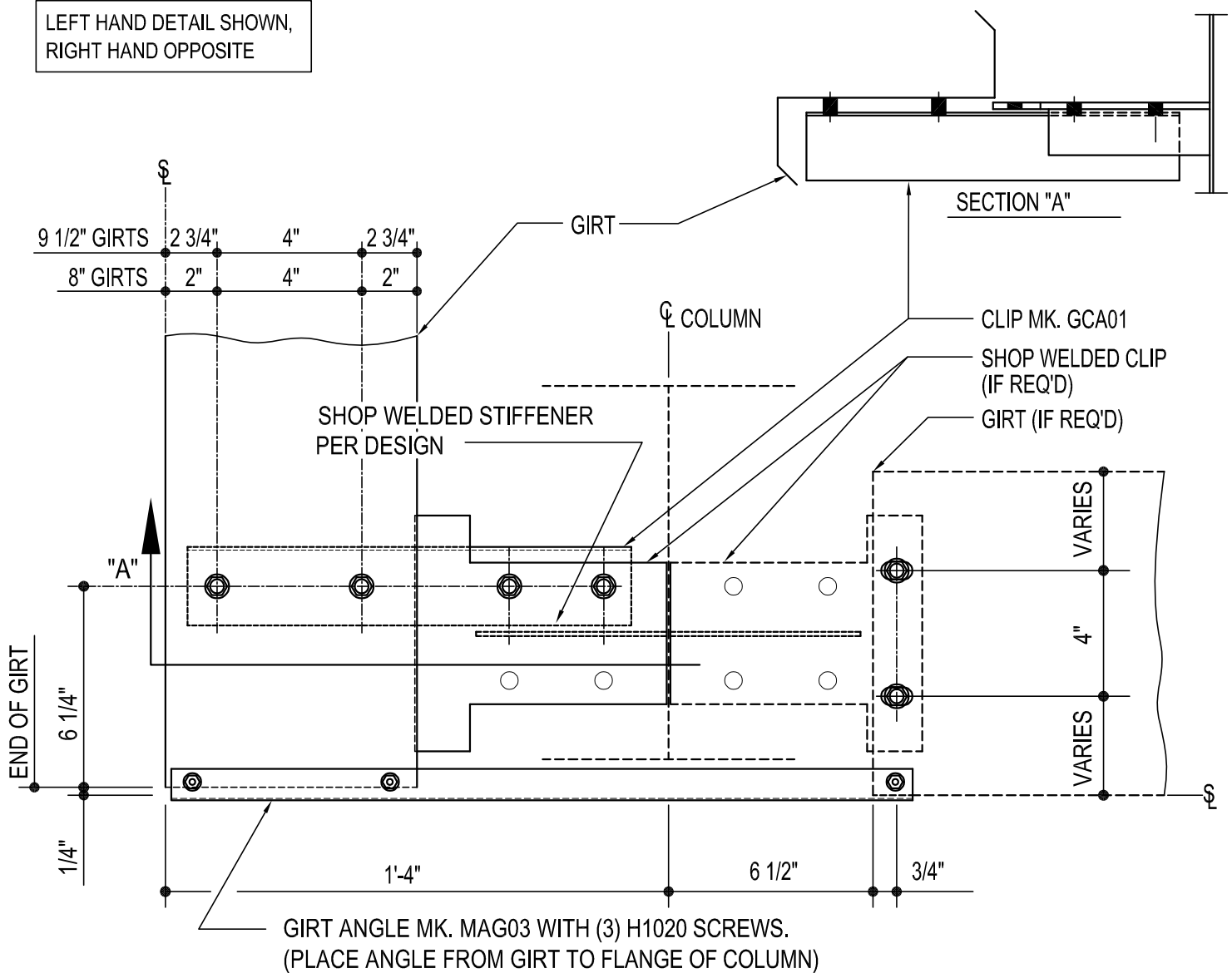
CE0241

Detailer Notes:

- 1) WELDED CLIP TO COLUMN: GF102
- 2) ADD STIFFENER PER DESIGN: WS_04

CE1010 - INSET CORNER WELDED GIRT DETAIL

[Download the DWG file by clicking here.](#)



CORNER GIRT DETAIL

CORNER INSET GIRT DETAIL WITH WELDED CLIPS

NOTE: USE (6) 1/2" X 1 1/4" A307 BOLTS H0500/NUTS H0400

REFERENCE WASHER DETAIL FOR TYPICAL WASHER REQUIREMENTS

CE1010

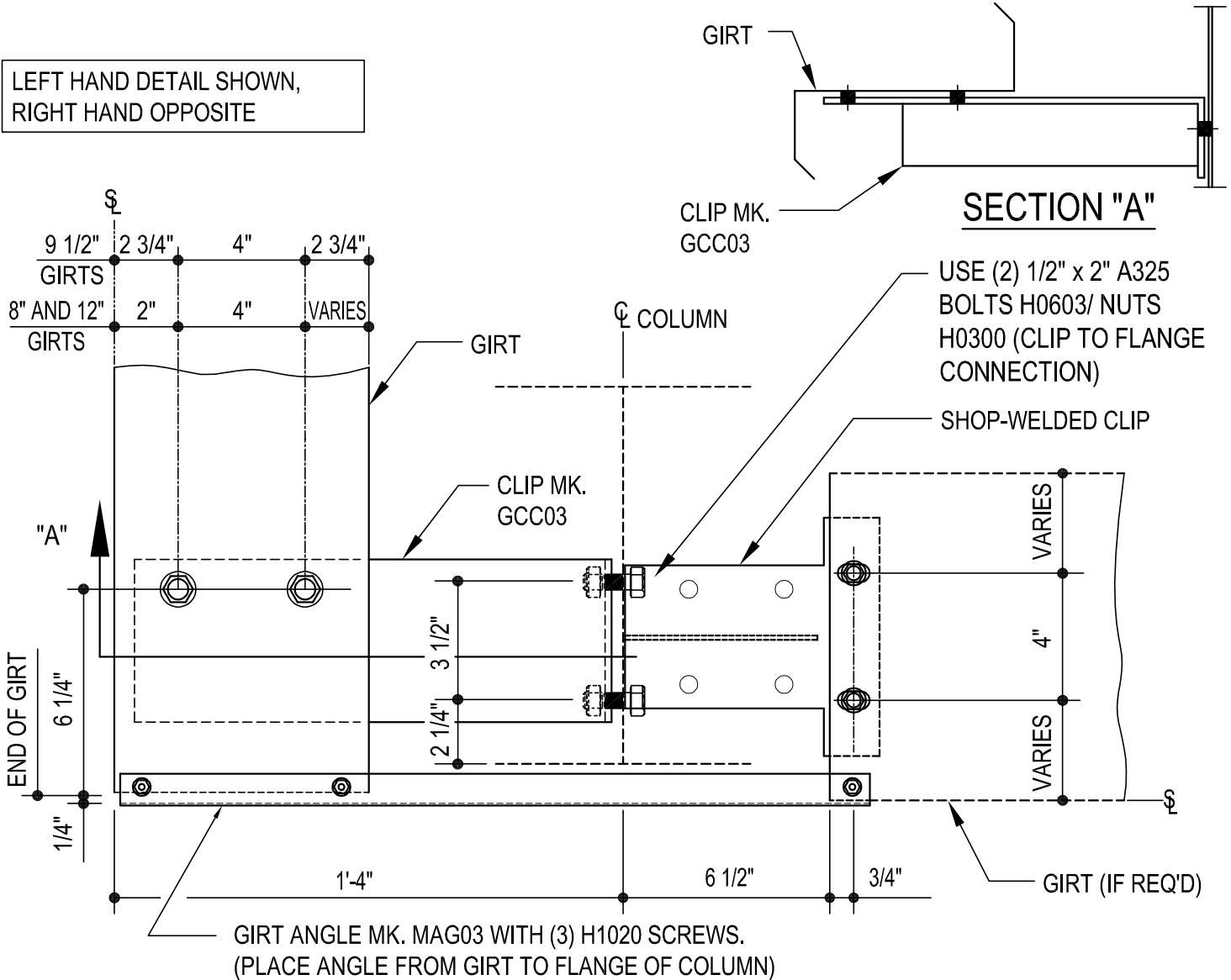
Detailer Notes:

- 1) WELDED CLIPS TO COLUMN: GF102
- 2) ADD STIFFENER PER DESIGN: WS_04
- 3) USE BOLTED ALTERNATE DETAIL FOR 12" GIRTS

CE1015 - INSET BOLTED CORNER GIRT DETAIL

[Download the DWG file by clicking here.](#)

LEFT HAND DETAIL SHOWN,
RIGHT HAND OPPOSITE



INSET BOLTED CORNER GIRT DETAIL

INSET GIRT DETAIL WITH BOLTED CORNER CLIP

NOTE: USE (4) 1/2" X 1 1/4" A307 BOLTS H0500/NUTS H0400

REFERENCE WASHER DETAIL FOR TYPICAL WASHER REQUIREMENTS

CE1015

Detailer Notes:

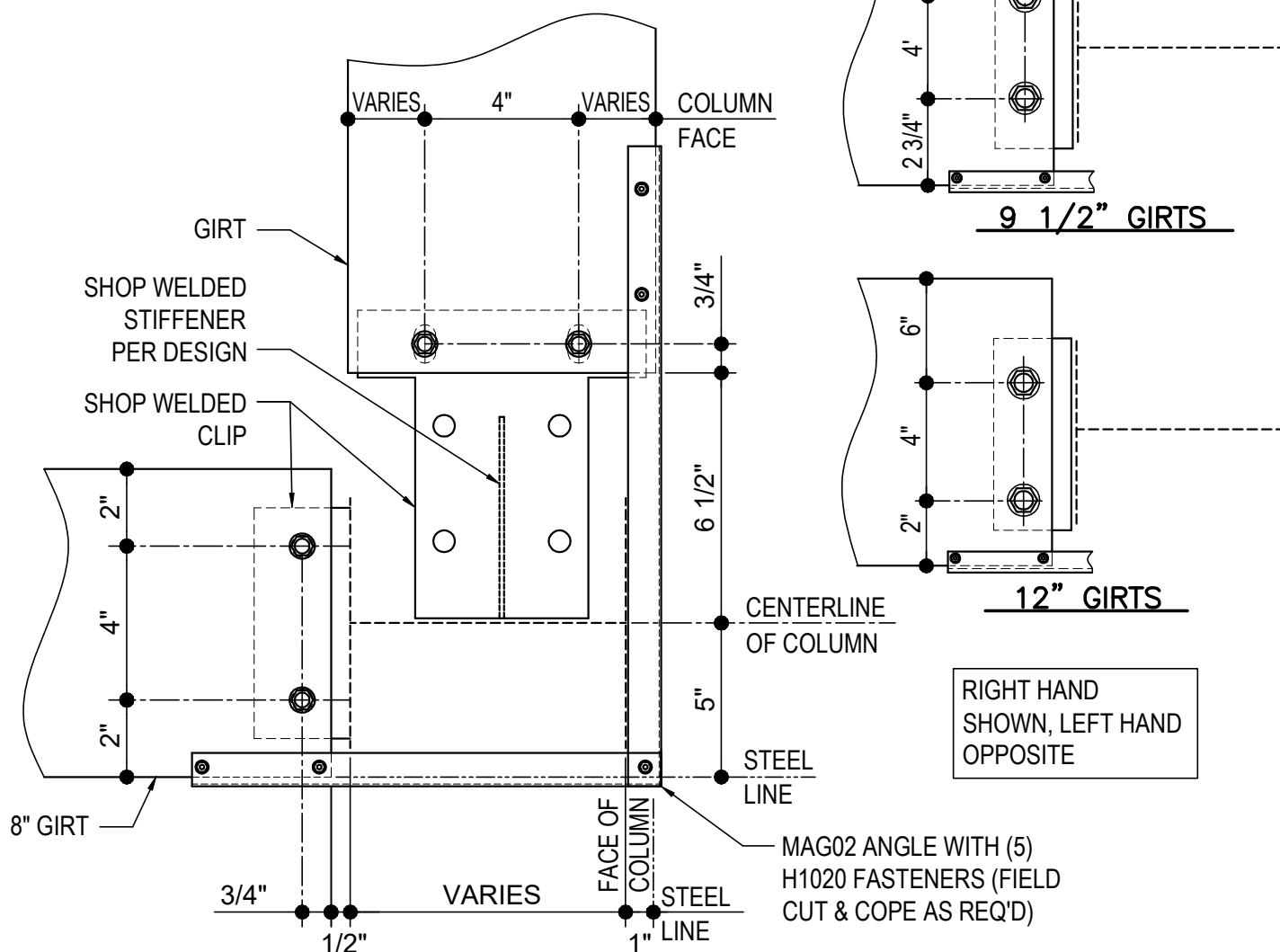
- 1) WELDED CLIPS TO COLUMN: GF102
- 2) ADD STIFFENER PER DESIGN: WS_04

CE1030 - INSET TO INSET CORNER DETAIL

[Download the DWG file by clicking here.](#)

ERECTOR NOTE

GIRT CLIPS ARE FACTORY PUNCHED TO BE USED WITH MULTIPLE GIRT DEPTHS. REFER TO THE STANDARD BOLT PLACMENT DETAIL(S) FOR PROPER BOLT PLACEMENT.



INSET TO INSET CORNER DETAIL

NOTE: USE (4) 1/2"x 1 1/4" A307 BOLTS H0500/NUTS H0400
REFERENCE STANDARD WASHER DETAIL FOR TYPICAL WASHER REQUIREMENTS

CE1030

Detailer Notes:

- 1) (2) HOLE WELDED CLIP: GRC09 (AT 8" AND 12" GIRTS), GRC03 (AT 9 1/2" GIRTS)
- 2) WELDED CLIP AT COLUMN WEB: GFI02
- 3) ADD STIFFENER PER DESIGN WS_04