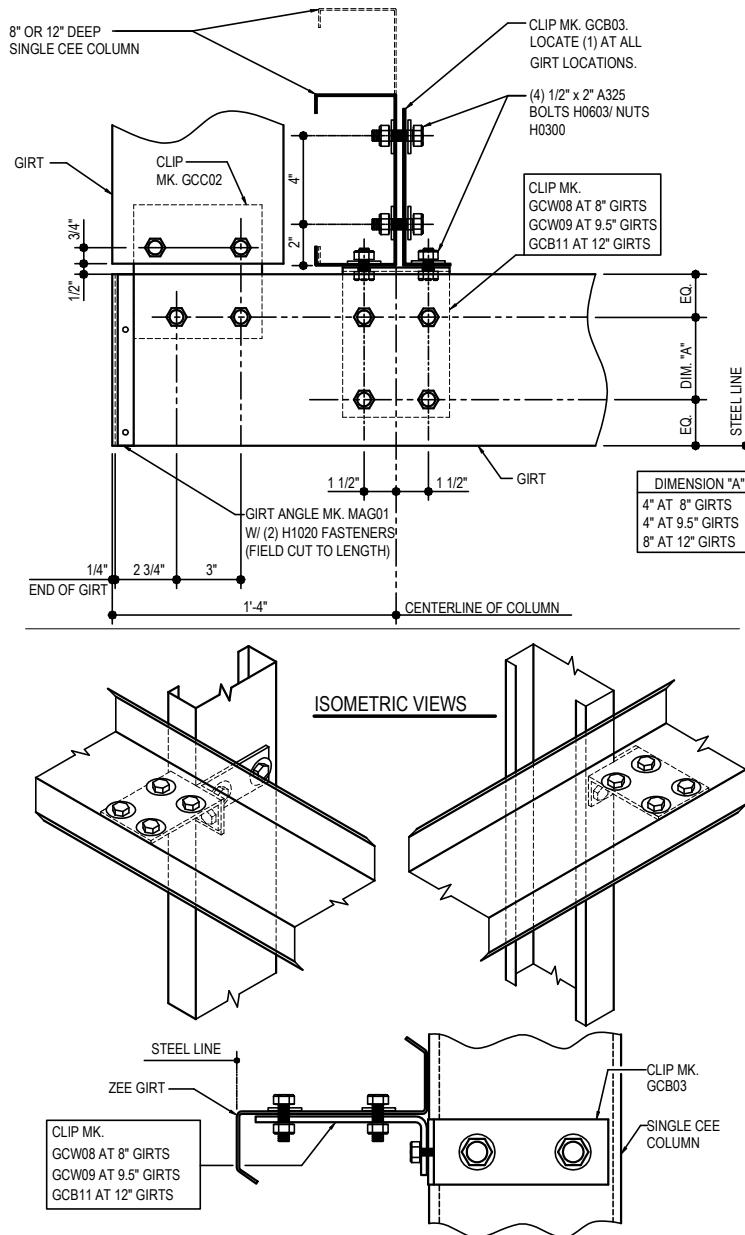


BYPASS CORNER GIRT DETAILS

CF0015 - SINGLE CEE COLUMN AT BYPASS GIRTS
CF0250 - GIRT TERMINATION DETAIL
CF0251 - GIRT TERMINATION AT EXISTING DETAIL
CF0252 - BOLTED GIRT TERMINATION DETAIL
CF0253 - BOLTED GIRT TERMINATION AT EXISTING DETAIL
CF0256 - HR GIRT TERMINATION DETAIL
CF0257 - HR GIRT TERMINATION @ C.F. COL.
CF0275 - GIRT TERMINATION @ MASONRY WALL DETAIL
CF0280 - BOLTED GIRT TERMINATION @ MASONRY WALL DETAIL
CF0351 - SIMPLE SPAN GIRT TERMINATION @ C.F. COL.
CF0360 - BYPASS GIRT AT CF CORNER COL.
CF0500 - 8" GIRT TERMINATION DETAIL
CF0501 - 8" GIRT TERMINATION AT EXISTING DETAIL
CF0510 - 8" GIRT TERMINATION @ MASONRY WALL DETAIL
CF0520 - 9 1/2" GIRT TERMINATION DETAIL
CF0521 - 9 1/2" GIRT TERMINATION AT EXISTING DETAIL
CF0530 - 9 1/2" GIRT TERMINATION @ MASONRY WALL DETAIL
CF1001 - BOLT PLACEMENT DETAIL
CF1010 - BYPASS CORNER GIRT DETAIL
CF1020 - SPANDREL GIRT AT CORNER (WELDED CLIP)
CF1021 - SPANDREL GIRT AT CORNER (BOLTED CLIP)
CF1060 - HR SPANDREL GIRT AT CORNER (WELDED CLIP)
CF1061 - HR SPANDREL GIRT AT CORNER (BOLTED CLIP)
CF1200 - BYPASS CORNER GIRT TERMINATION DETAIL
CF1201 - BYPASS CORNER GIRT TERMINATION AT EXISTING DETAIL
CF1210 - SPANDREL GIRT TERMINATION (WELDED CLIP)
CF1211 - SPANDREL GIRT TERMINATION (BOLTED CLIP)
CF1220 - HR SPANDREL GIRT TERMINATION (WELDED CLIP)
CF1221 - HR SPANDREL GIRT TERMINATION (BOLTED CLIP)
CF1260 - BYPASS CORNER GIRT TERMINATION @ MASONRY WALL DETAIL
CF1270 - SPANDREL GIRT TERMINATION AT WALL (WELDED CLIP)
CF1271 - SPANDREL GIRT TERMINATION AT WALL (BOLTED CLIP)
CF1280 - HR SPANDREL GIRT TERMINATION AT WALL (WELDED CLIP)
CF1281 - HR SPANDREL GIRT TERMINATION AT WALL (BOLTED CLIP)

CF0015 - SINGLE CEE COLUMN AT BYPASS GIRTS

[Download the DWG file by clicking here.](#)



SINGLE CEE COLUMN BYPASS CORNER

LEFT HAND DETAIL SHOWN, RIGHT HAND OPPOSITE
NOTE: USE (8) 1/2" X 1 1/4" A307 BOLTS H0500 / NUTS H0400.
REFERENCE ERECTOR NOTE FOR TYPICAL WASHER REQUIREMENTS

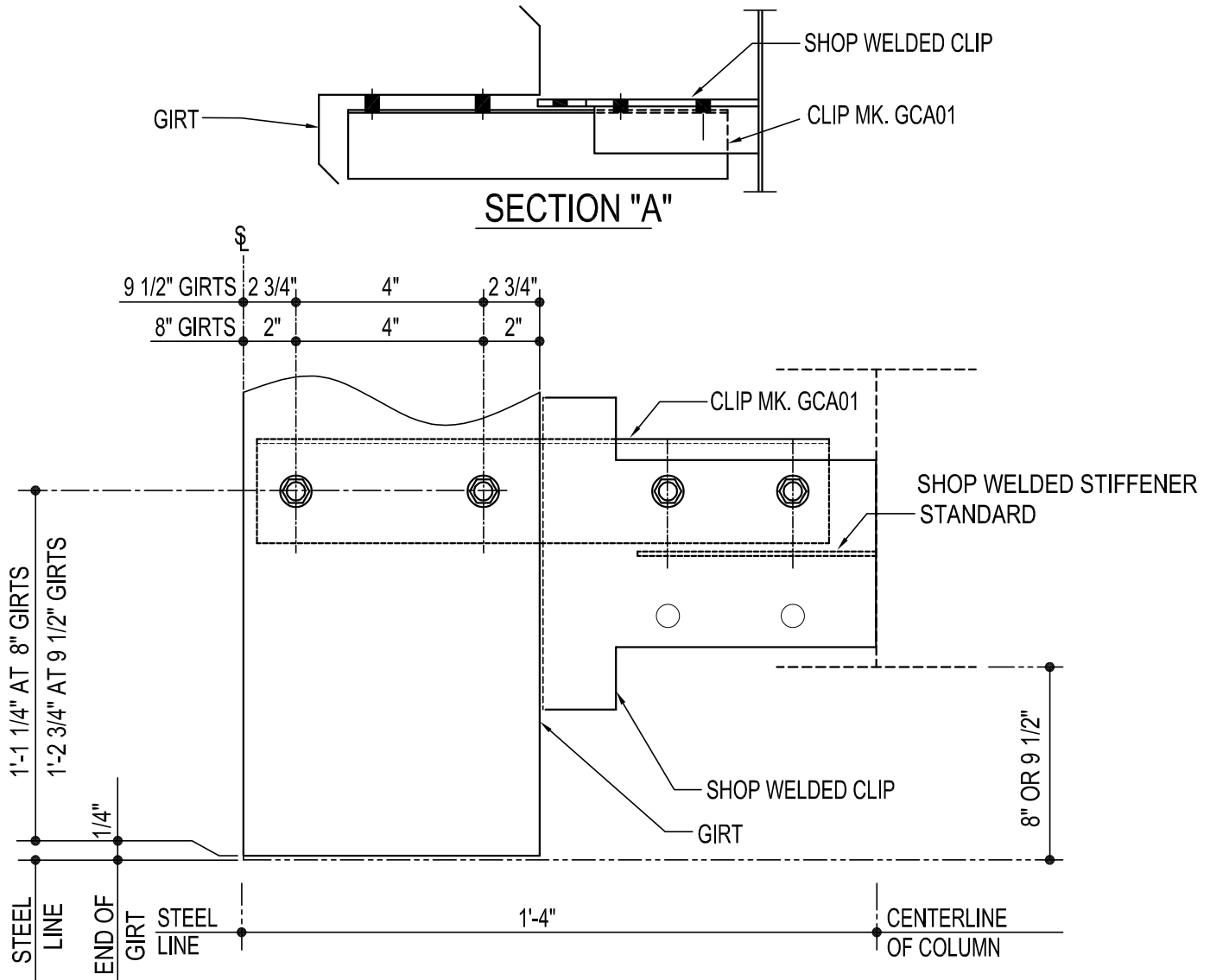
CF0015

Detailer Notes:

1) N/A

CF0250 - GIRT TERMINATION DETAIL

[Download the DWG file by clicking here.](#)



GIRT TERMINATION DETAIL

NOTE: USE (4) 1/2" x 1 1/4" A307 BOLTS H0500/NUTS H0400
REFERENCE STANDARD WASHER DETAIL FOR TYPICAL WASHER
REQUIREMENTS

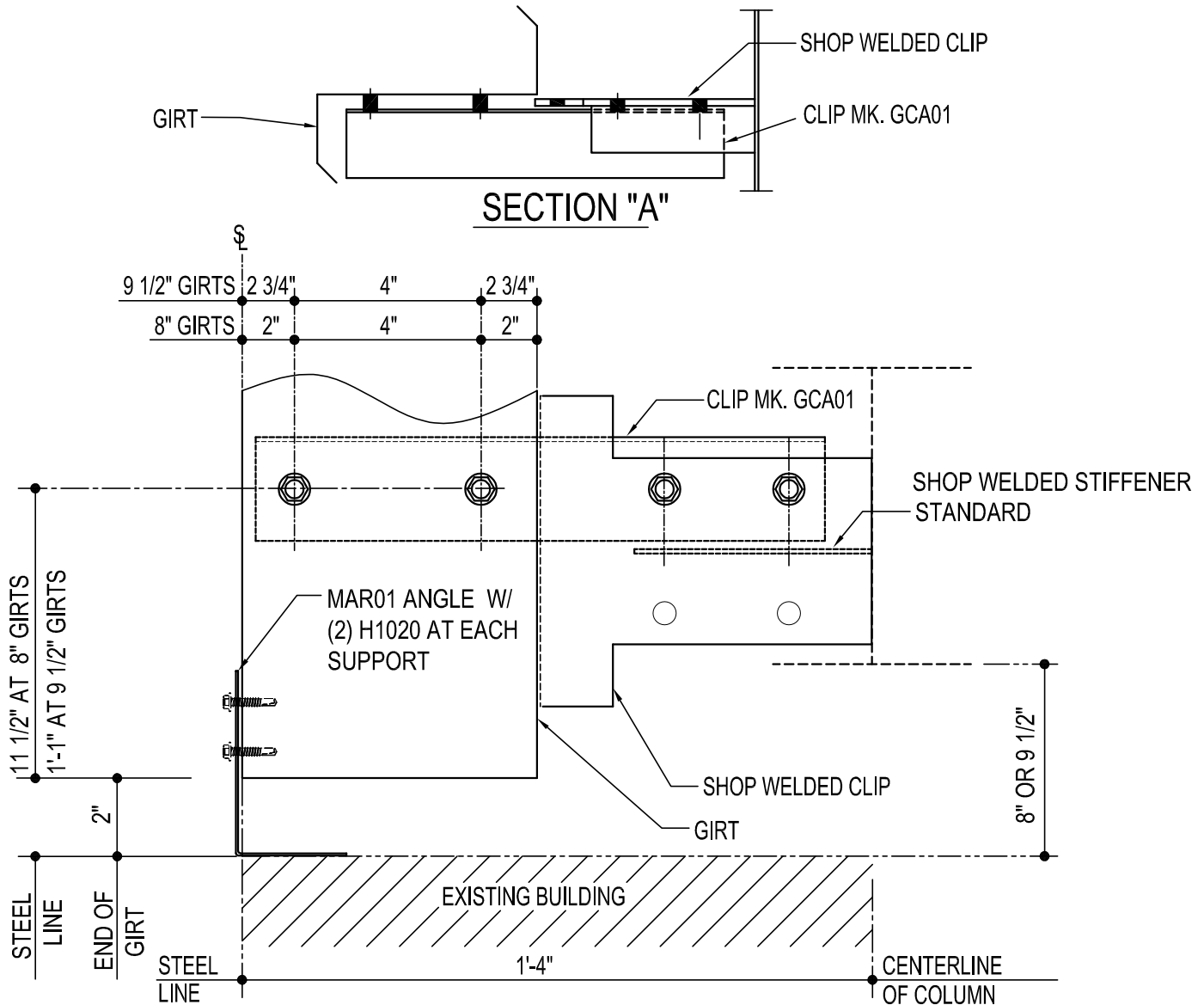
CF0250

Detailer Notes:

- 1) WELDED CLIP TO COLUMN : GF102
- 2) ADD STIFFENER: WS_04
- 3) USE BOLTED ALTERNATE DETAIL FOR 12" GIRTS

CF0251 - GIRT TERMINATION AT EXISTING DETAIL

[Download the DWG file by clicking here.](#)



GIRT TERMINATION DETAIL

NOTE: USE (4) 1/2" x 1 1/4" A307 BOLTS H0500/NUTS H0400
REFERENCE STANDARD WASHER DETAIL FOR TYPICAL WASHER
REQUIREMENTS

CF0251

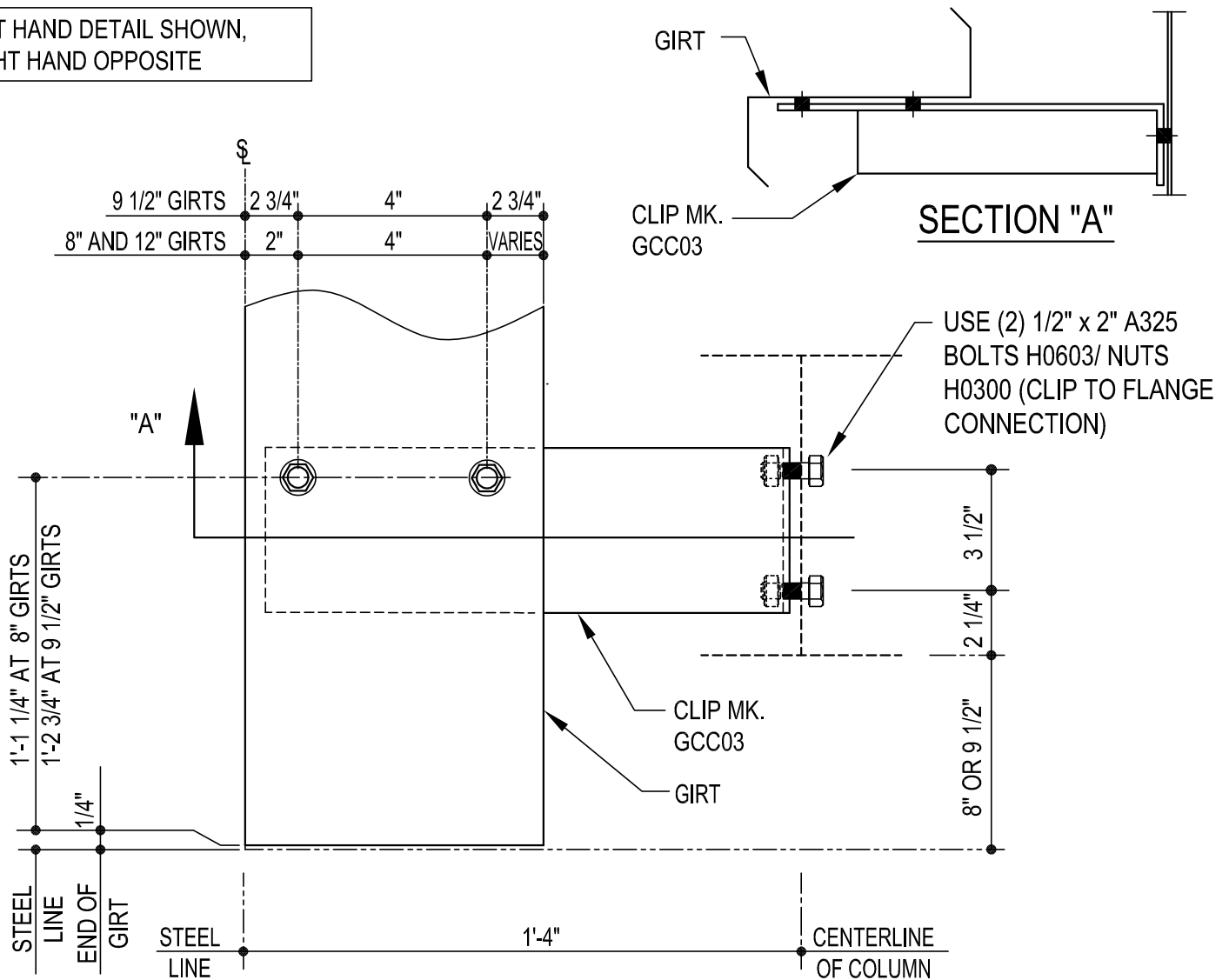
Detailer Notes:

- 1) WELDED CLIP TO COLUMN : GFI02
- 2) ADD STIFFENER: WS_04
- 3) USE BOLTED ALTERNATE DETAIL FOR 12" GIRTS
- 4) MAR01 angle and H1020 fasteners will need to be added by hand in Tekla or PartsList

CF0252 - BOLTED GIRT TERMINATION DETAIL

[Download the DWG file by clicking here.](#)

LEFT HAND DETAIL SHOWN,
RIGHT HAND OPPOSITE



BOLTED GIRT TERMINATION DETAIL

NOTE: USE (2) 1/2" x 1 1/4" A307 BOLTS H0500/NUTS H0400
REFERENCE STANDARD WASHER DETAIL FOR TYPICAL WASHER
REQUIREMENTS

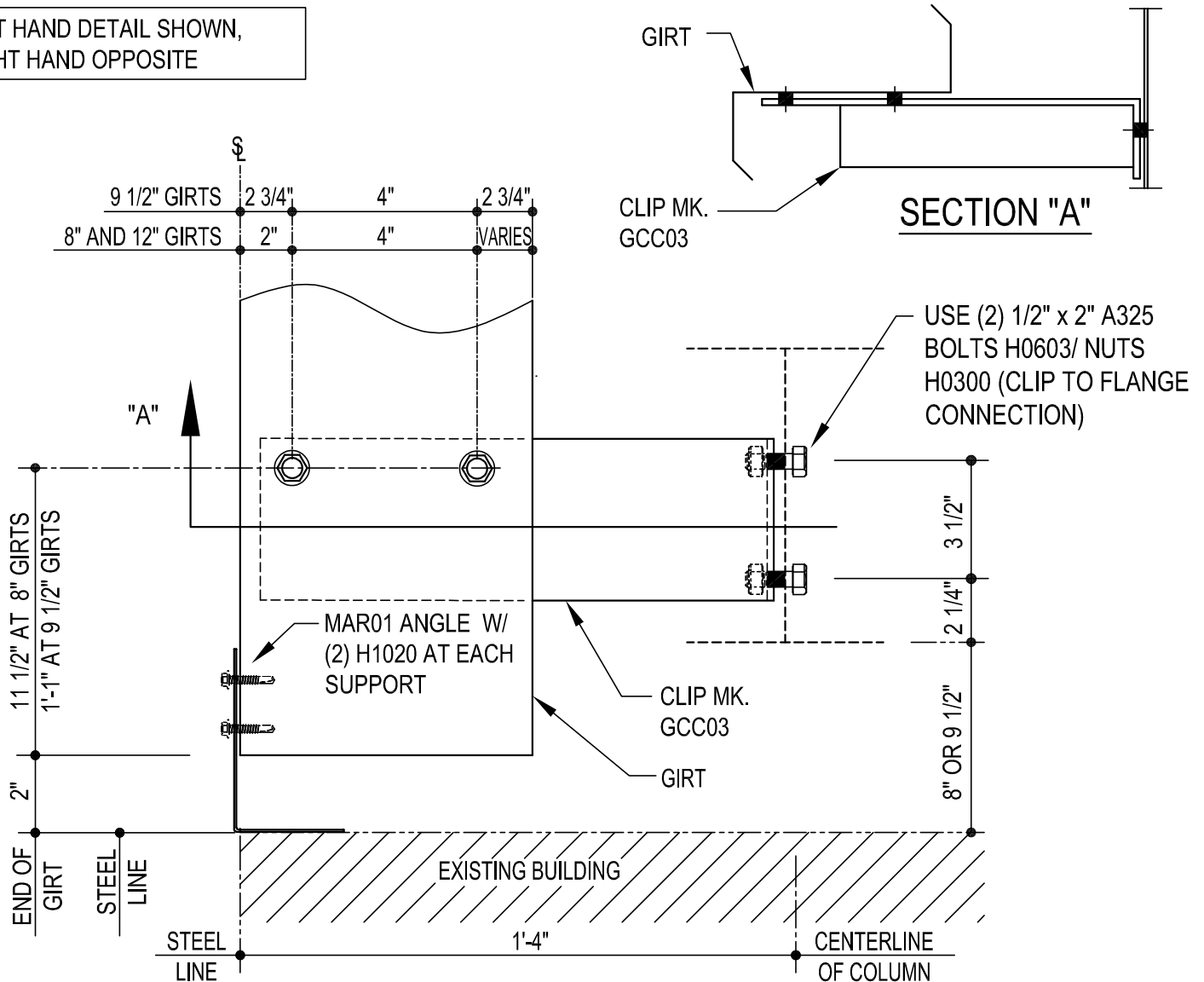
CF0252

Detailer Notes:

CF0253 - BOLTED GIRT TERMINATION AT EXISTING DETAIL

[Download the DWG file by clicking here.](#)

LEFT HAND DETAIL SHOWN,
RIGHT HAND OPPOSITE



BOLTED GIRT TERMINATION AT EXISTING DETAIL

NOTE: USE (2) 1/2" x 1 1/4" A307 BOLTS H0500/NUTS H0400
REFERENCE STANDARD WASHER DETAIL FOR TYPICAL WASHER
REQUIREMENTS

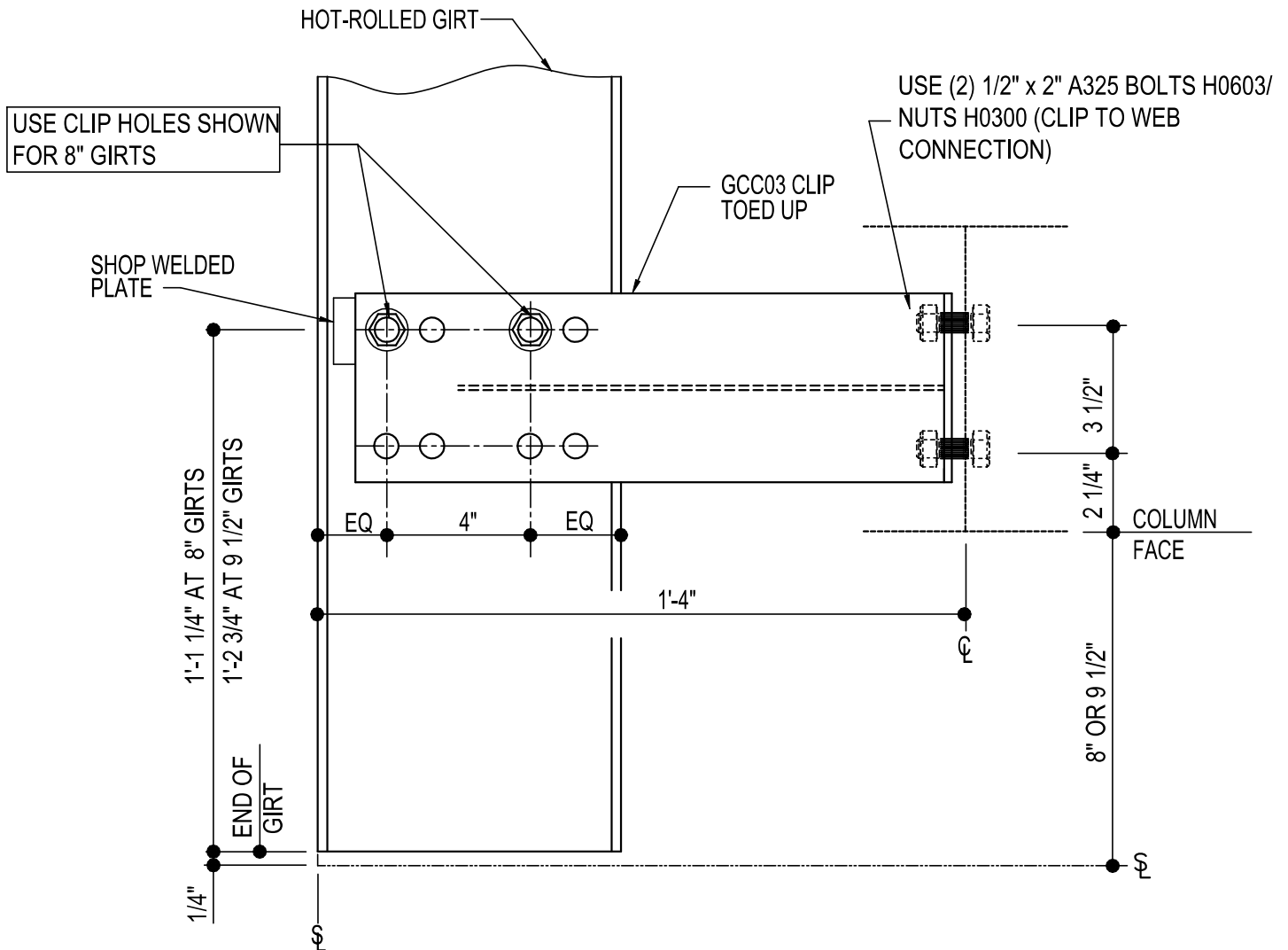
CF0253

Detailer Notes:

- 1) MAR01 angle and H1020 fasteners will need to be added by hand in Tekla or PartsList

CF0256 - H.R. GIRT TERMINATION DETAIL

[Download the DWG file by clicking here.](#)



HOT-ROLLED GIRT TERMINATION DETAIL

LEFT HAND DETAIL SHOWN, RIGHT HAND OPPOSITE
NOTE: USE (2) 1/2" x 2" A325 BOLTS (H0603) & NUTS (H0300)
REFERENCE ERECTOR NOTE FOR TYPICAL WASHER REQUIREMENTS

CF0256

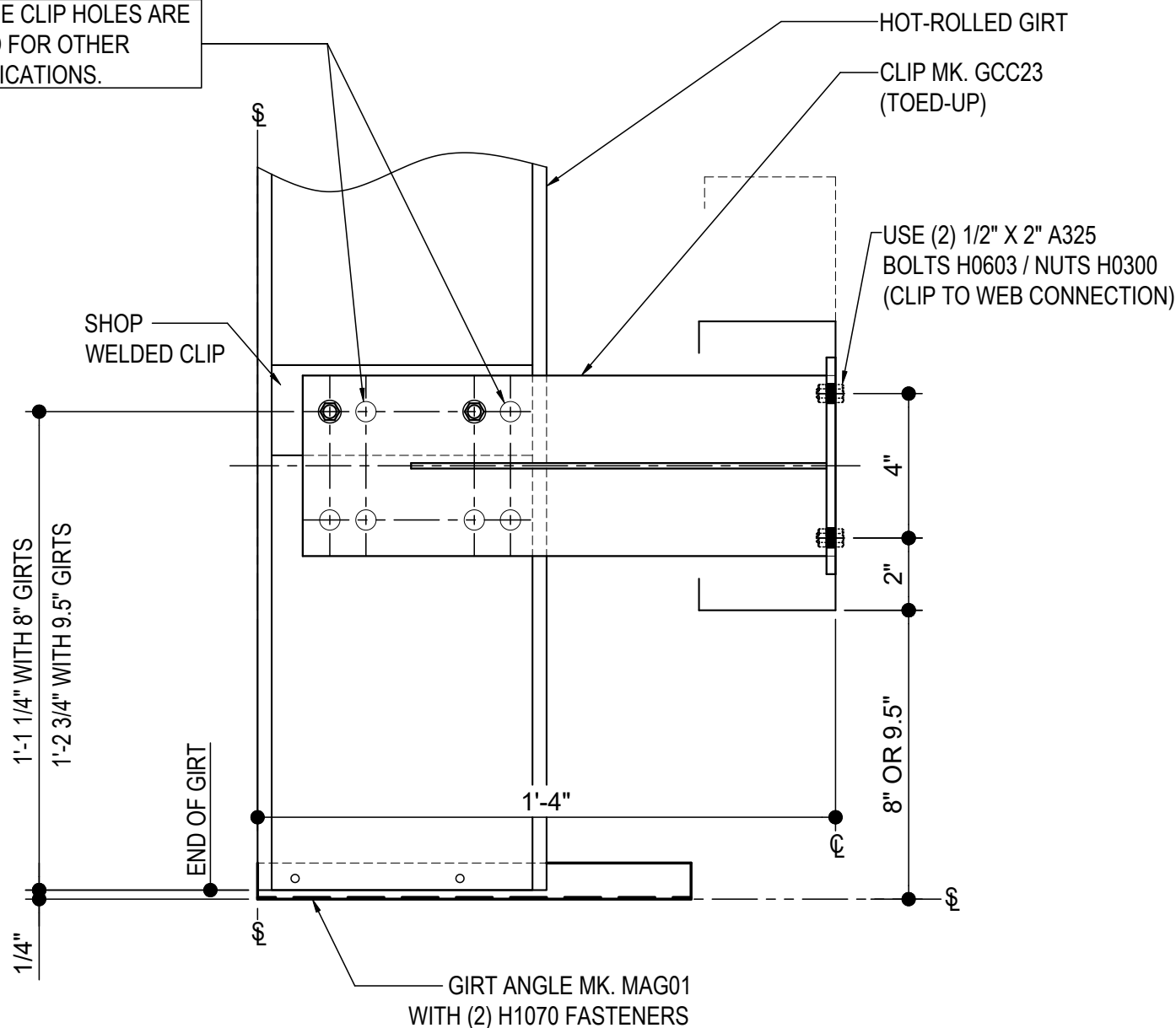
Detailer Notes:

- 1) WELDED CLIP TO HR GIRT : HCS08
- 2) DETAIL IS FOR BU/HR COLUMN ONLY.

CF0257 - HOT-ROLLED GIRT TERMINATION @ C.F. COL.

[Download the DWG file by clicking here.](#)

THESE CLIP HOLES ARE
USED FOR OTHER
APPLICATIONS.



HOT-ROLLED GIRT TERMINATION @ C.F. COL.

LEFT HAND DETAIL SHOWN. RIGHT HAND OPPOSITE

NOTE: USE (2) 1/2" X 2" A325 BOLTS (H0603) & NUTS (H0300)

REFERENCE ERECTOR NOTE FOR TYPICAL WASHER REQUIREMENTS

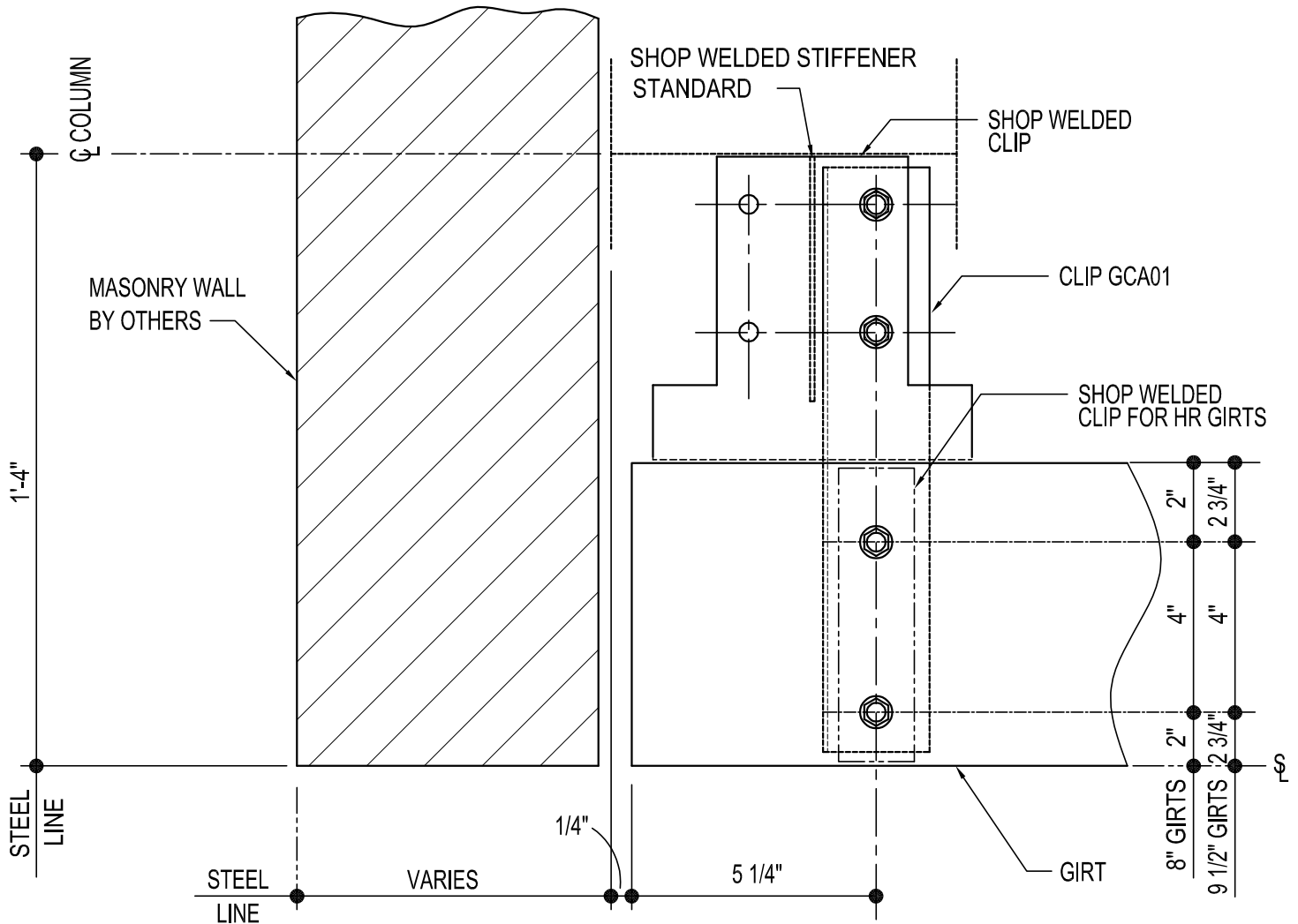
CF0257

Detailer Notes:

- 1) THIS DETAIL IS FOR COLD FORMED COLUMN CONDITIONS ONLY.
- 2) THE SHOP WELDED CLIP SHOWN IN THE DETAIL, IS A HCS08..

CF0275 - GIRT TERMINATION @ MASONRY WALL DETAIL

[Download the DWG file by clicking here.](#)



GIRT TERMINATION DETAIL

LEFT HAND DETAIL SHOWN, RIGHT HAND OPPOSITE

NOTE: USE (4) 1/2" x 1 1/4" A307 BOLTS H0500/NUTS H0400

REFERENCE STANDARD WASHER DETAIL FOR TYPICAL WASHER REQUIREMENTS

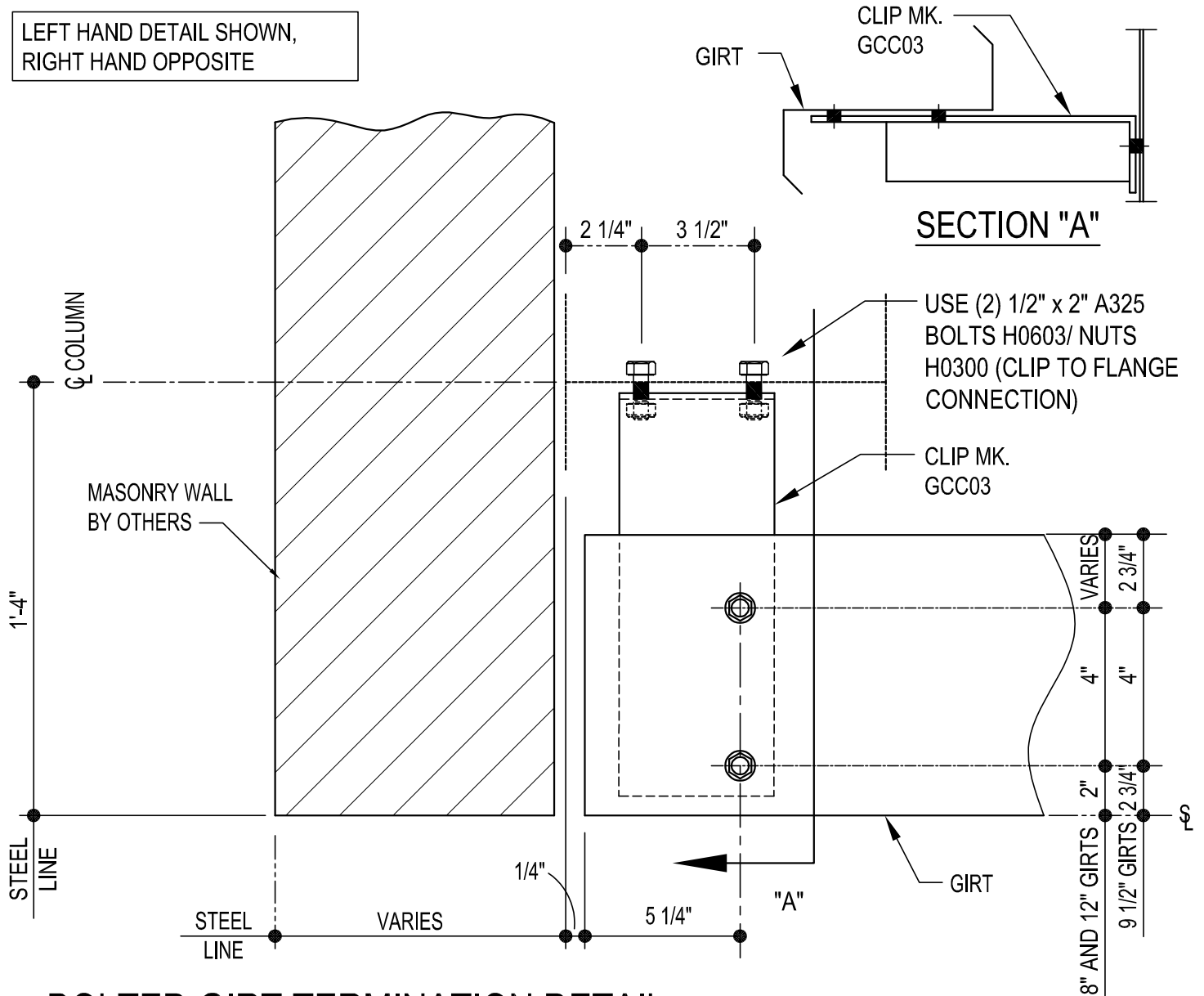
CF0275

Detailer Notes:

- 1) WELDED CLIP : GFI02
- 2) WELDED CLIP AT HR GIRT : HCS__
- 3) ADD STIFFENER: WS_04
- 4) USE BOLTED ALTERNATE DETAIL FOR 12" GIRTS

CF0275 - BOLTED GIRT TERMINATION @ MASONRY WALL DETAIL

[Download the DWG file by clicking here.](#)



BOLTED GIRT TERMINATION DETAIL

NOTE: USE (4) 1/2" x 1 1/4" A307 BOLTS H0500/NUTS H0400
REFERENCE STANDARD WASHER DETAIL FOR TYPICAL WASHER
REQUIREMENTS

CF0280

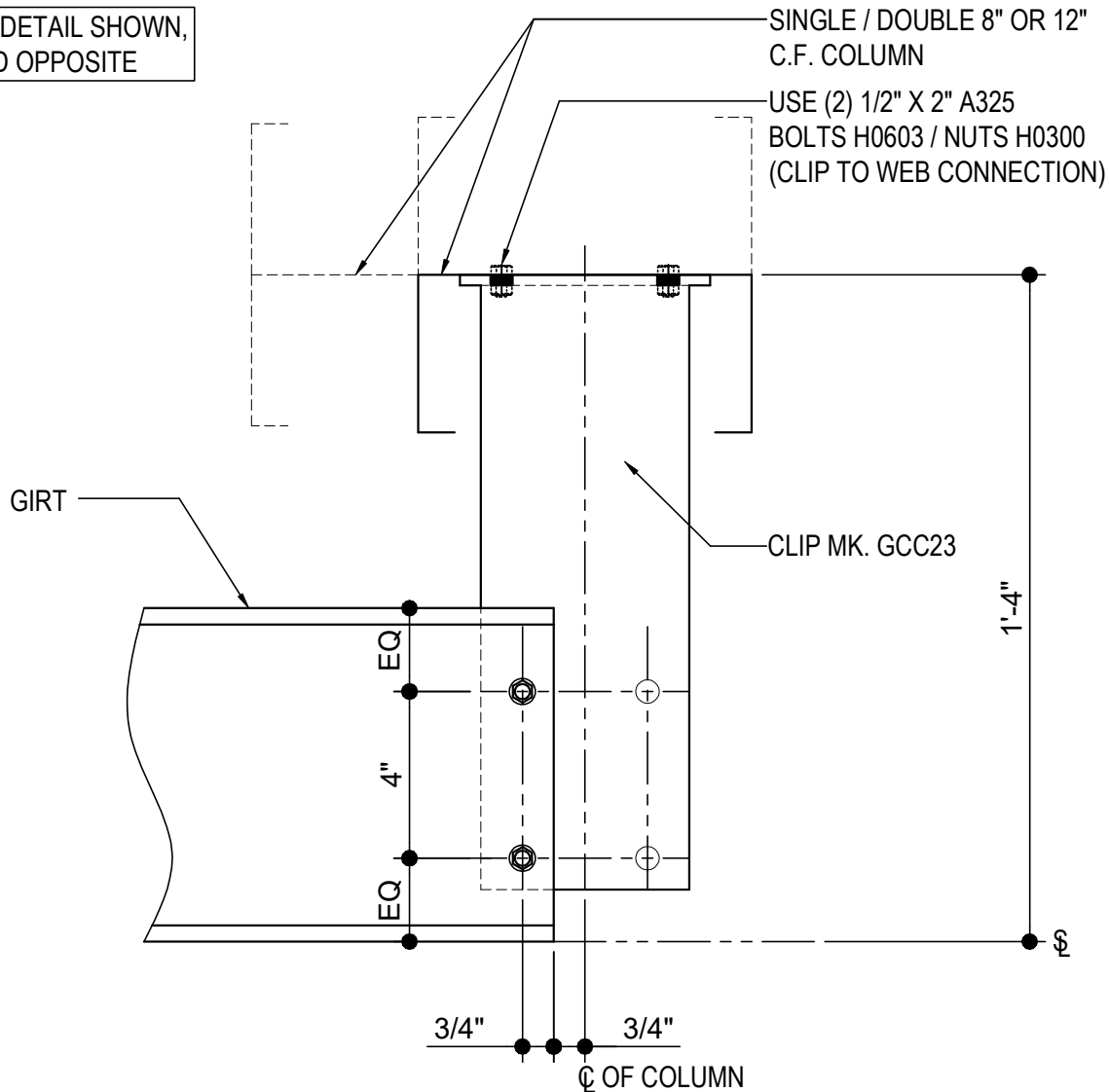
Detailer Notes:

- 1) WELDED CLIP : GF102
2) WELDED CLIP AT HR GIRT : HCS__
2) ADD STIFFENER: WS_04

CF0351 - SIMPLE SPAN GIRT TERMINATION @ C.F. COL.

[Download the DWG file by clicking here.](#)

LEFT HAND DETAIL SHOWN,
RIGHT HAND OPPOSITE



SIMPLE SPAN GIRT TERMINATION @ C.F. COL.

SIMPLE-SPAN GIRT TERMINATION AT INTERIOR COLUMN

NOTE: USE (2) 1/2" X 1 1/4" A307 BOLTS (H0500) & NUTS (H0400)

REFERENCE ERECTOR NOTE FOR TYPICAL WASHER REQUIREMENTS

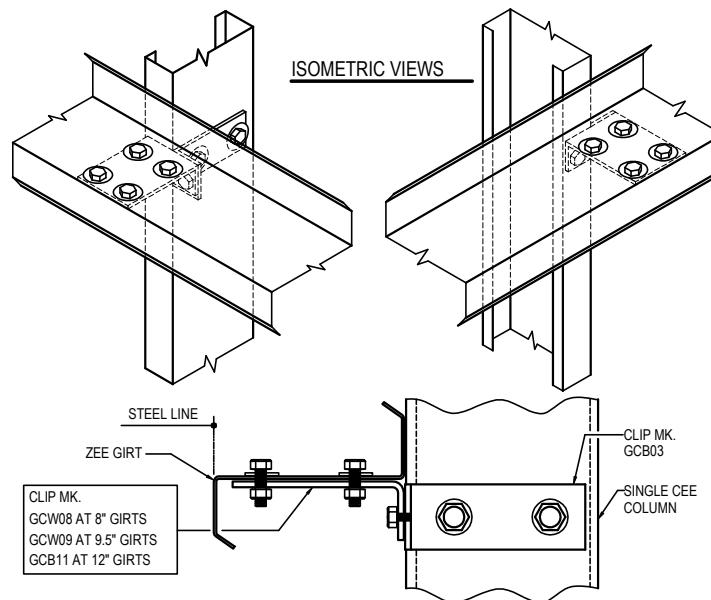
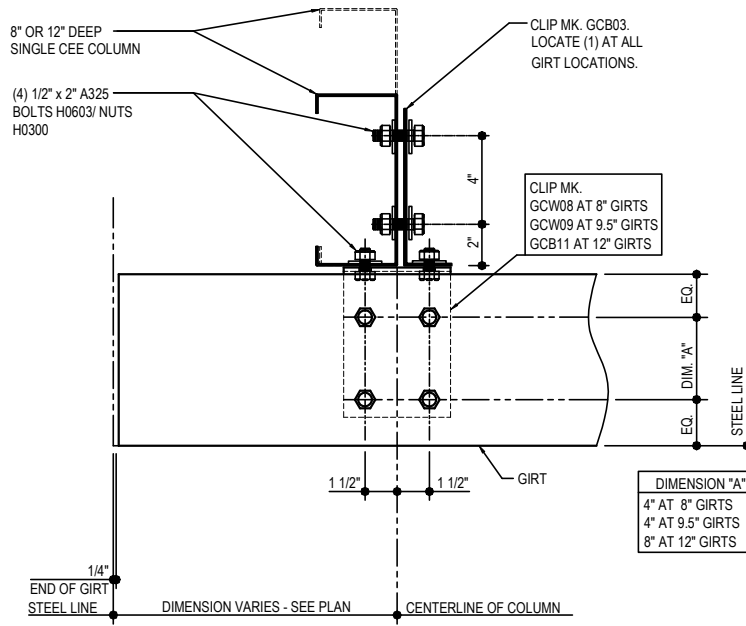
CF0351

Detailer Notes:

- 1) THIS DETAIL IS FOR COLD FORMED COLUMN CONDITIONS ONLY.

CF0360 - BYPASS GIRT AT CF CORNER COL.

[Download the DWG file by clicking here.](#)



BYPASS GIRT AT CF CORNER COL.

LEFT HAND DETAIL SHOWN, RIGHT HAND OPPOSITE
NOTE: USE (4) 1/2" X 1 1/4" A307 BOLTS H0500 / NUTS H0400.
REFERENCE ERECTOR NOTE FOR TYPICAL WASHER REQUIREMENTS

CF0360

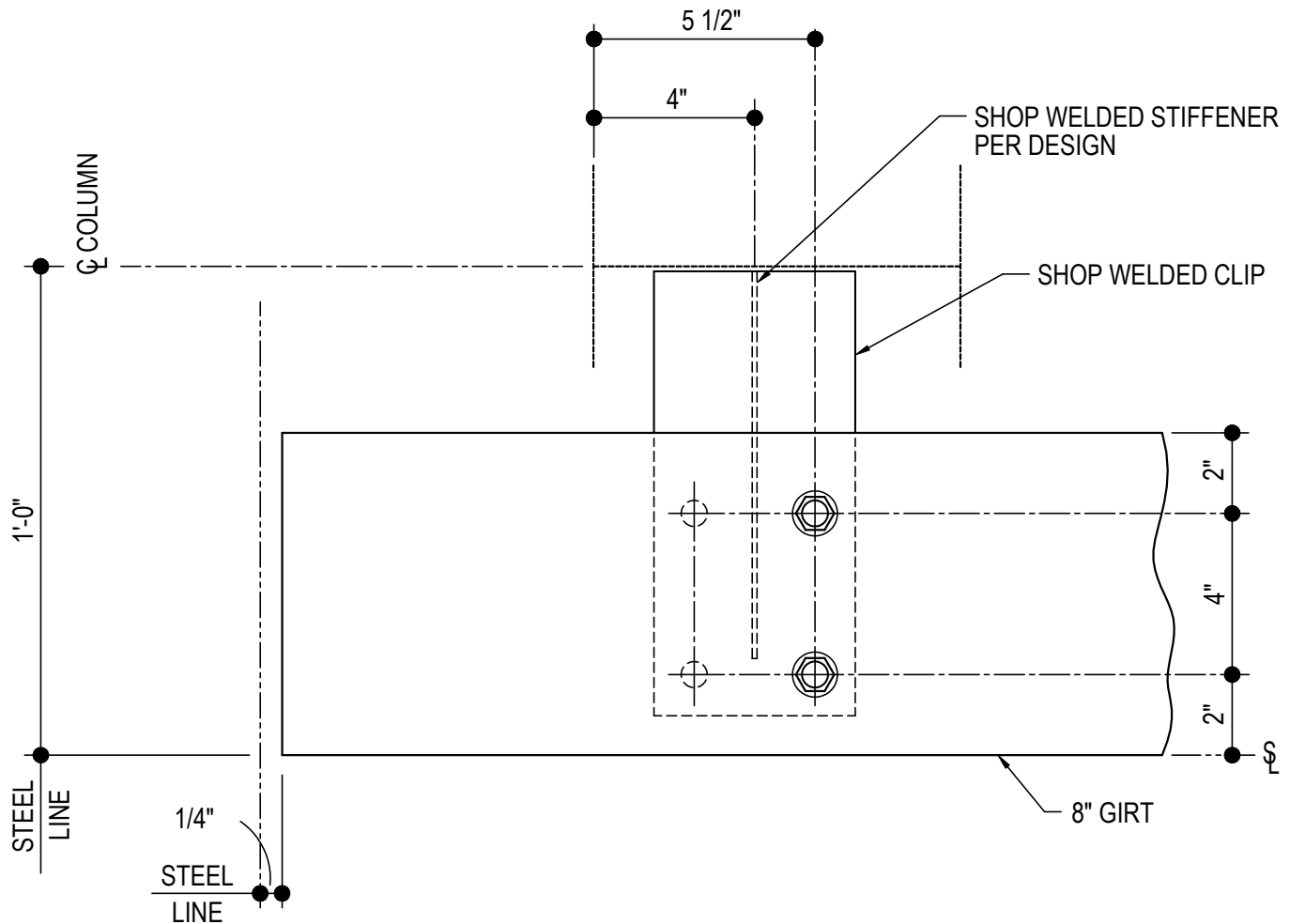
Detailer Notes:

1) N/A

CF0500 - 8" GIRT TERMINATION DETAIL

[Download the DWG file by clicking here.](#)

LEFT HAND DETAIL SHOWN,
RIGHT HAND OPPOSITE



8" GIRT TERMINATION DETAIL

NOTE: USE (2) 1/2"x 1 1/4" A307 BOLTS H0500/NUTS H0400

REFERENCE ERECTOR NOTE FOR TYPICAL WASHER REQUIREMENTS

CF0500

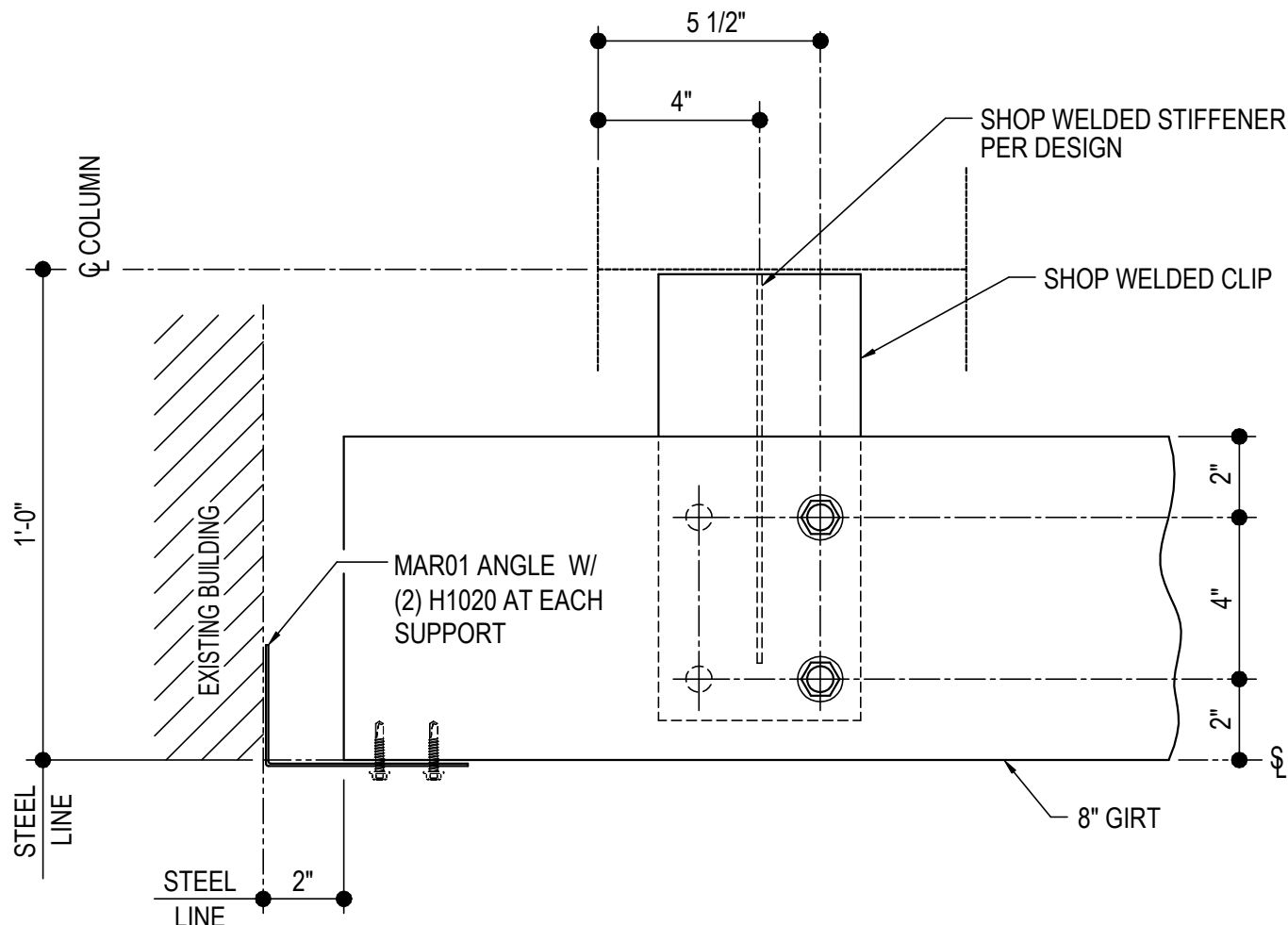
Detailer Notes:

- 1) WELDED CLIP: GRC01
- 2) ADD STIFFENER PER DESIGN: WS_12

CF0501 - 8" GIRT TERMINATION AT EXISTING DETAIL

[Download the DWG file by clicking here.](#)

LEFT HAND DETAIL SHOWN,
RIGHT HAND OPPOSITE



8" GIRT TERMINATION AT EXISTING DETAIL

NOTE: USE (2) 1/2"x 1 1/4" A307 BOLTS H0500/NUTS H0400

REFERENCE ERECTOR NOTE FOR TYPICAL WASHER REQUIREMENTS

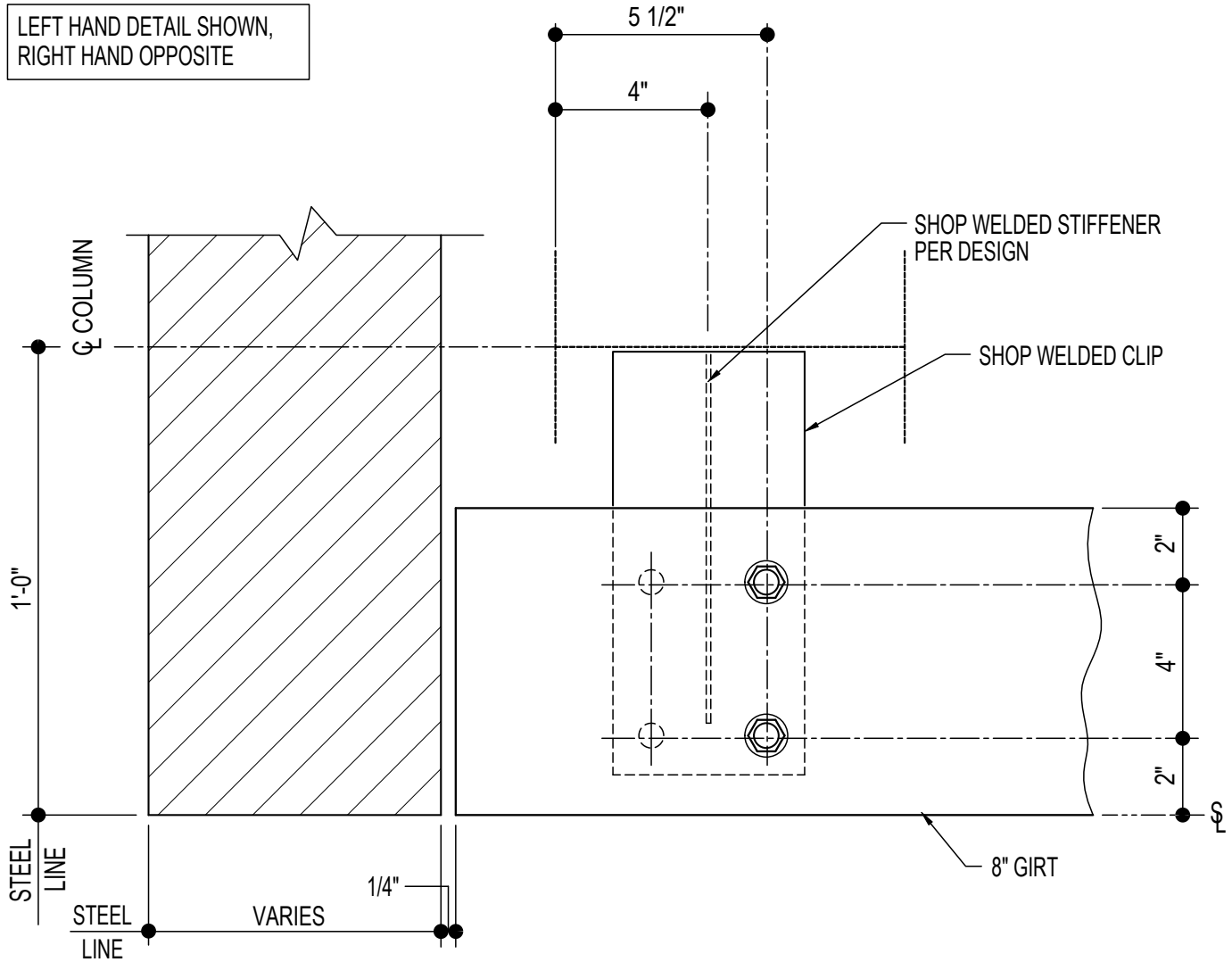
CF0501

Detailer Notes:

- 1) WELDED CLIP: GRC01
- 2) ADD STIFFENER PER DESIGN: WS_12
- 3) MAR01 angle and H1020 fasteners will need to be added by hand in Tekla or PartsList

CF0510 - 8" GIRT TERMINATION @ MASONRY WALL DETAIL

[Download the DWG file by clicking here.](#)



8" GIRT TERMINATION DETAIL

NOTE: USE (2) 1/2" x 1 1/4" A307 BOLTS H0500/NUTS H0400
REFERENCE STANDARD WASHER DETAIL FOR TYPICAL WASHER REQUIREMENTS

CF0510

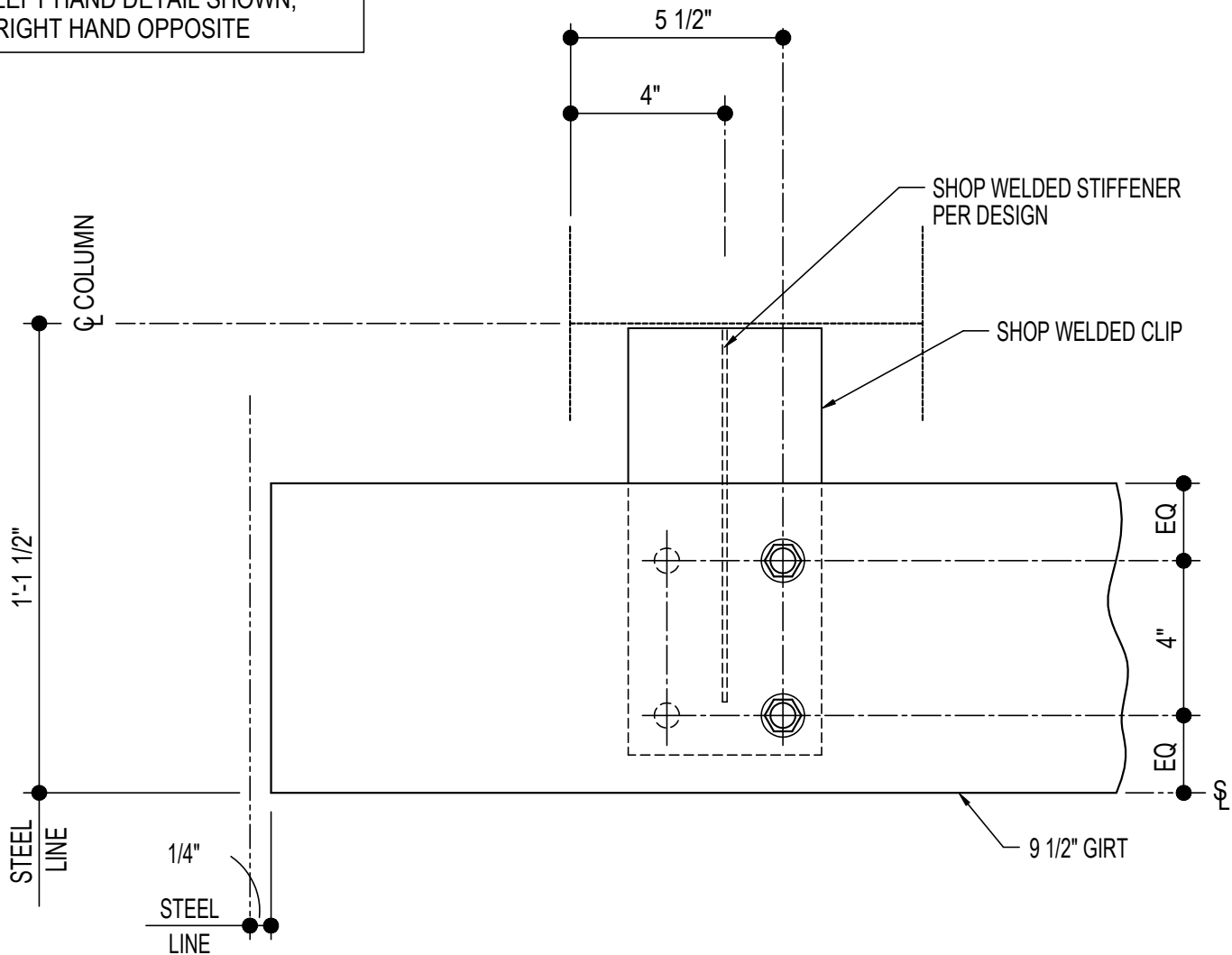
Detailer Notes:

- 1) WELDED CLIP: GRC01
- 2) ADD STIFFENER PER DESIGN: WS_12

CF0520 - 9 1/2" GIRT TERMINATION DETAIL

[Download the DWG file by clicking here.](#)

LEFT HAND DETAIL SHOWN,
RIGHT HAND OPPOSITE



9 1/2" GIRT TERMINATION DETAIL

NOTE: USE (2) 1/2"x 1 1/4" A307 BOLTS H0500/NUTS H0400
REFERENCE ERECTOR NOTE FOR TYPICAL WASHER REQUIREMENTS

CF0520

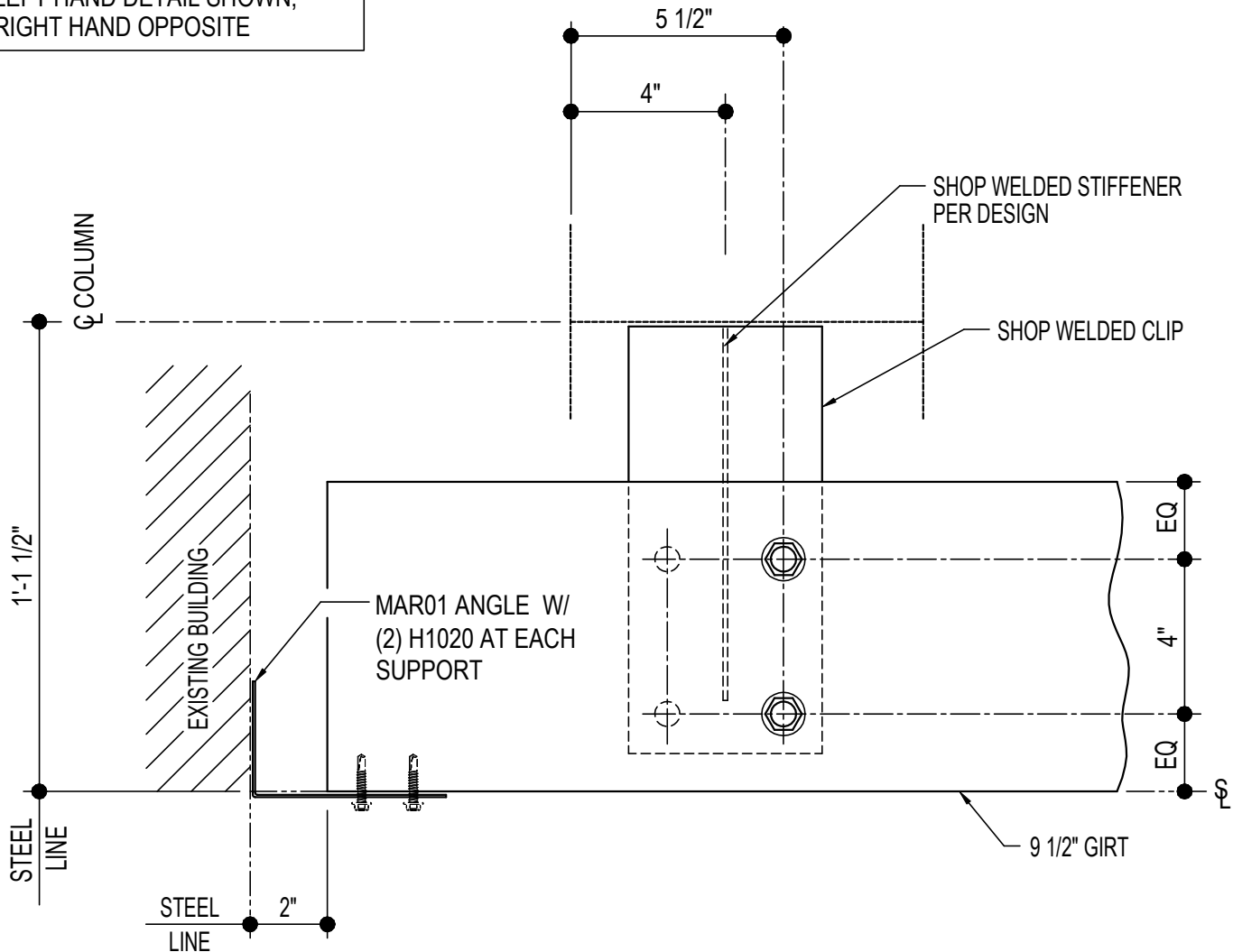
Detailer Notes:

- 1) WELDED CLIP: GRC02
- 2) ADD STIFFENER PER DESIGN: WS_12

CF0521 - 9 1/2" GIRT TERMINATION AT EXISTING DETAIL

[Download the DWG file by clicking here.](#)

LEFT HAND DETAIL SHOWN,
RIGHT HAND OPPOSITE



9 1/2" GIRT TERMINATION AT EXISTING DETAIL

NOTE: USE (2) 1/2"x 1 1/4" A307 BOLTS H0500/NUTS H0400

REFERENCE ERECTOR NOTE FOR TYPICAL WASHER REQUIREMENTS

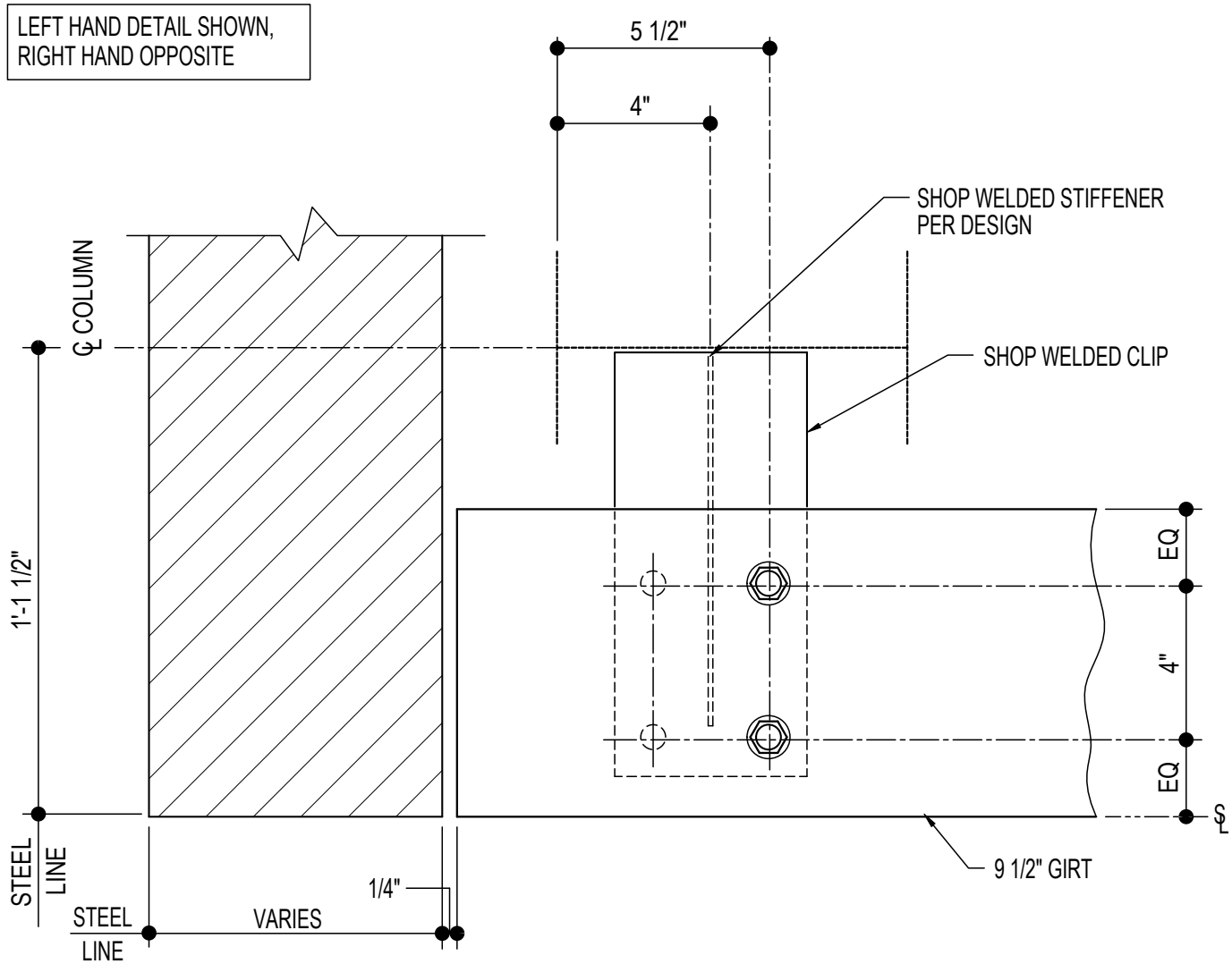
CF0521

Detailer Notes:

- 1) WELDED CLIP: GRC02
- 2) ADD STIFFENER PER DESIGN: WS_12
- 3) MAR01 angle and H1020 fasteners will need to be added by hand in Tekla or PartsList

CF0530 - 9 1/2" GIRT TERMINATION @ MASONRY WALL DETAIL

[Download the DWG file by clicking here.](#)



9 1/2" GIRT TERMINATION DETAIL

NOTE: USE (2) 1/2" x 1 1/4" A307 BOLTS H0500/NUTS H0400

REFERENCE STANDARD WASHER DETAIL FOR TYPICAL WASHER
REQUIREMENTS

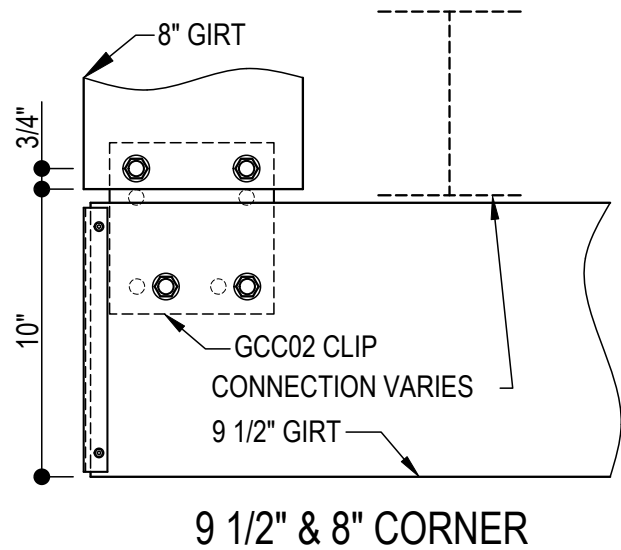
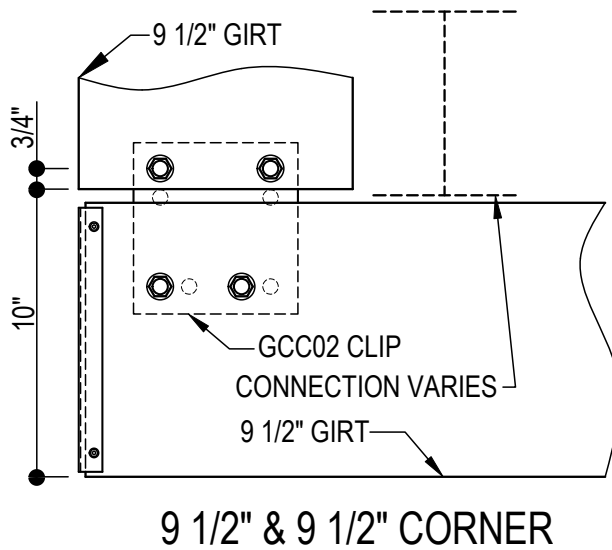
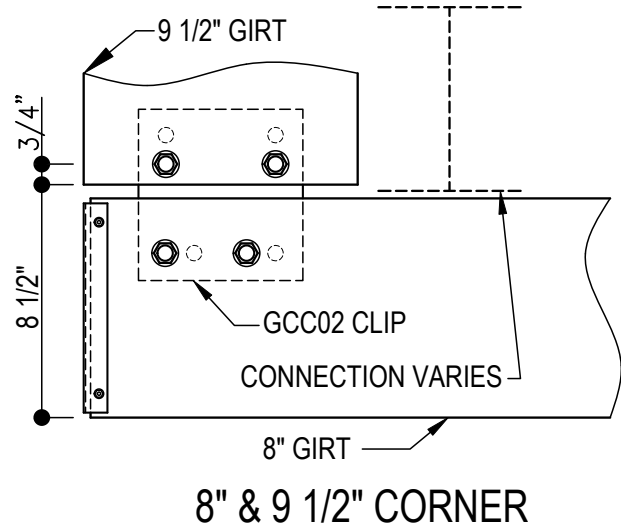
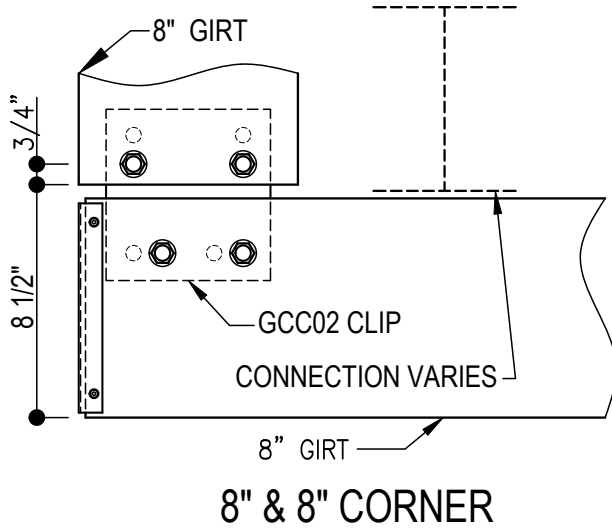
CF0530

Detailer Notes:

- 1) WELDED CLIP: GRC02
- 2) ADD STIFFENER PER DESIGN: WS_12

CF1001 - BOLT PLACEMENT DETAIL

[Download the DWG file by clicking here.](#)



BYPASS GIRT BOLT PLACEMENT DETAIL

REFERENCE WASHER DETAIL FOR TYPICAL WASHER REQUIREMENTS
GIRT CLIPS ARE FACTORY PUNCHED TO BE USED WITH MULTIPLE GIRT DEPTHS.
REFER TO THE DETAILS ABOVE TO DETERMINE WHICH HOLES ARE UTILIZED.

CF1001

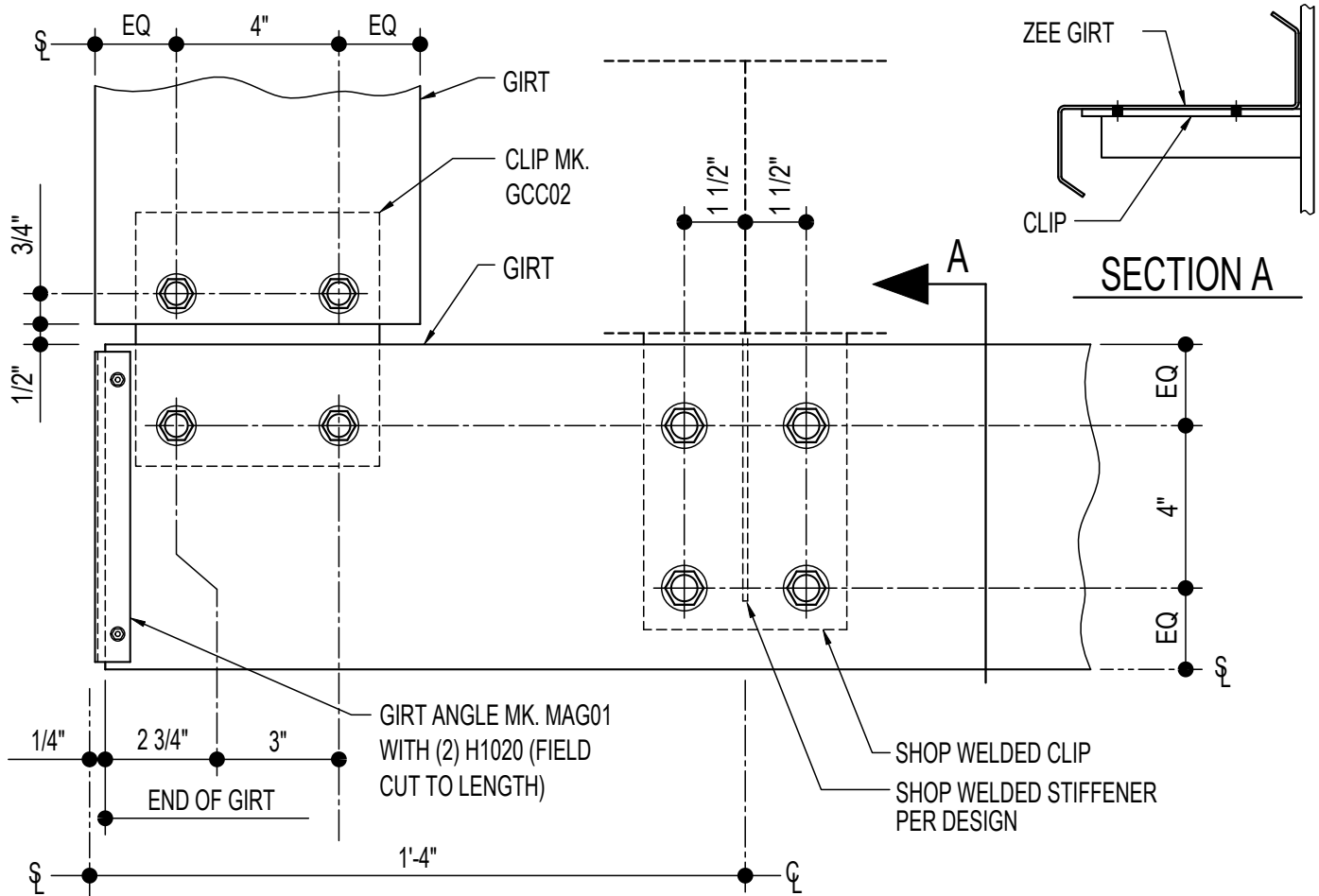
Detailer Notes: 1) N/A

CF1010 - BYPASS CORNER GIRT DETAIL

[Download the DWG file by clicking here.](#)

ERECTOR NOTE

GIRT CLIPS ARE FACTORY PUNCHED TO BE USED WITH MULTIPLE GIRT DEPTHS. REFER TO THE STANDARD BOLT PLACMENT DETAIL(S) FOR PROPER BOLT PLACEMENT.



BYPASS GIRT CORNER DETAIL

LEFT HAND DETAIL SHOWN, RIGHT HAND OPPOSITE

NOTE: USE (8) 1/2" x 1 1/4" A307 BOLTS H0500/NUTS H0400

REFERENCE STANDARD WASHER DETAIL FOR TYPICAL WASHER REQUIREMENTS

CF1010

Detailer Notes:

- 1) (4) HOLE WELDED CLIP:
8" - PCU01
9 1/2" - GCB62
12" - GCB12

- 2) ADD STIFFENER PER DESIGN:
8" GIRT: WS_04
9 1/2" GIRT: WS_04
12" GIRT: WS_12

CF1020 - SPANDREL GIRT AT CORNER (WELDED CLIP)

[Download the DWG file by clicking here.](#)

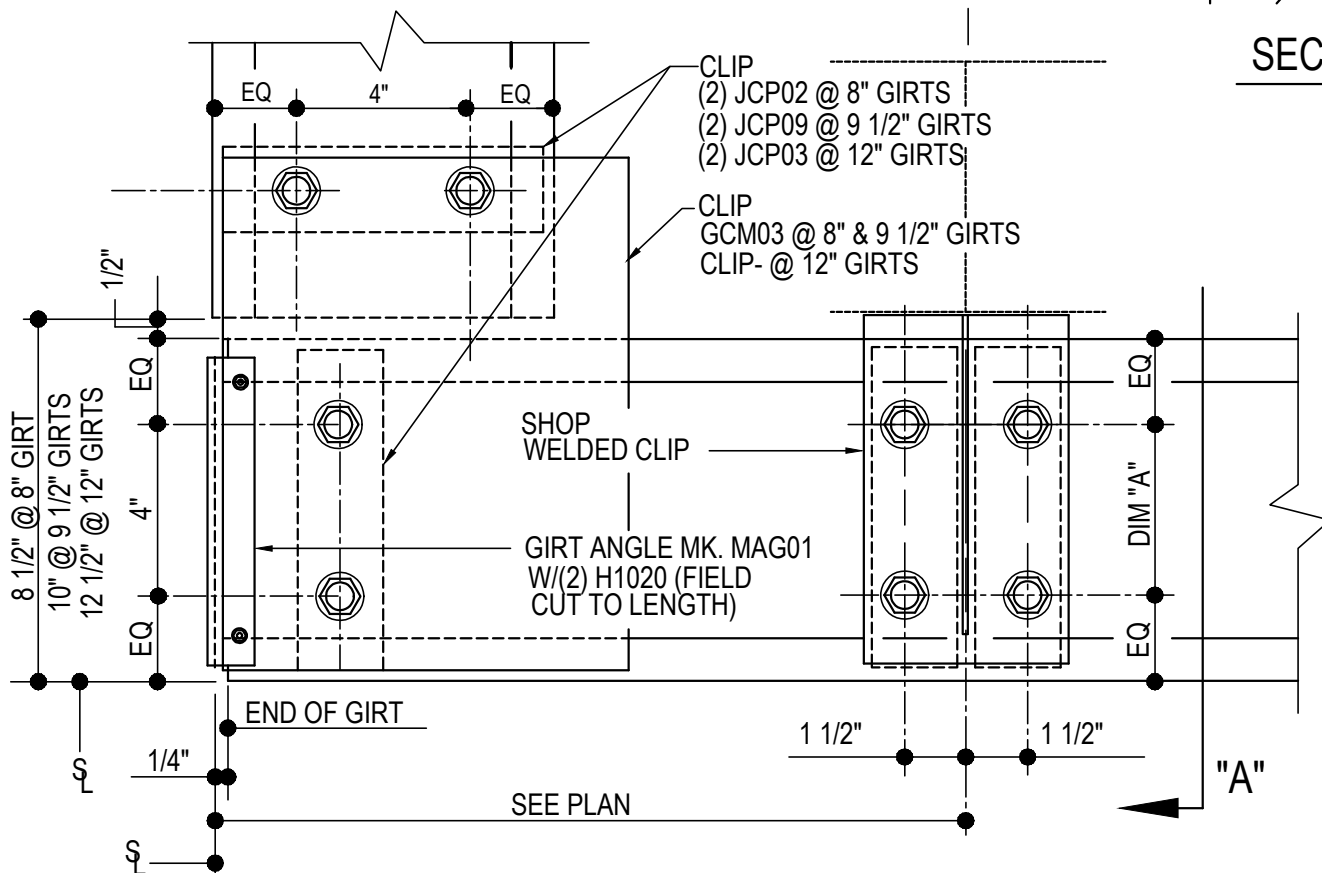
DIM. "A" = 4" AT 8" & 9 1/2" GIRTS
= 8" AT 12" GIRTS

LEFT HAND DETAIL SHOWN,
RIGHT HAND OPPOSITE

(2) JCP02 @ 8" GIRT
(2) JCP09 @ 9 1/2" GIRT
(2) JCP03 @ 12" GIRT
ATTACHMENT TO WALL AT
4'-0" O.C. MAXIMUM
(ANCHORS NOT BY NBS)
(FIELD DRILL GIRT AS REQ'D)

CL COLUMN

SECT. "A"



SPANDREL GIRT AT CORNER (WELDED CLIP)

NOTE: USE (8) 1/2"X 1 1/4" A307 BOLTS H0500/NUTS H0400
REFERENCE ERECTOR NOTE FOR TYPICAL WASHER REQUIREMENTS

CF1020

Detailer Notes:

- 1) THIS DETAIL SHOULD BE USED ONLY WHEN REQUESTED BY THE CUSTOMER
- 2) SHOP WELDED BYPASS GIRT CLIP TO COLUMN: 8" GIRT = GCM04, 9 1/2" GIRT = GCM95, 12" GIRT = GCM12
- 3) ADD STIFFENER PER DESIGN TO GIRT CLIP: GCM04 = WS_04, GCM95 = WS_04, GCM12 = WS_12

CF1021 - SPANDREL GIRT AT CORNER (BOLTED CLIP)

[Download the DWG file by clicking here.](#)

COLUMN FLANGE WIDTH	*	8" GIRT CLIP	9 1/2" GIRT CLIP	12" GIRT CLIP
FLANGE = 4"	1 1/8"	GCM11	GCM25	GCM13
FLANGE > 4"	1 1/2"	GCM01	GCM24	GCM06

LEFT HAND DETAIL SHOWN,
RIGHT HAND OPPOSITE

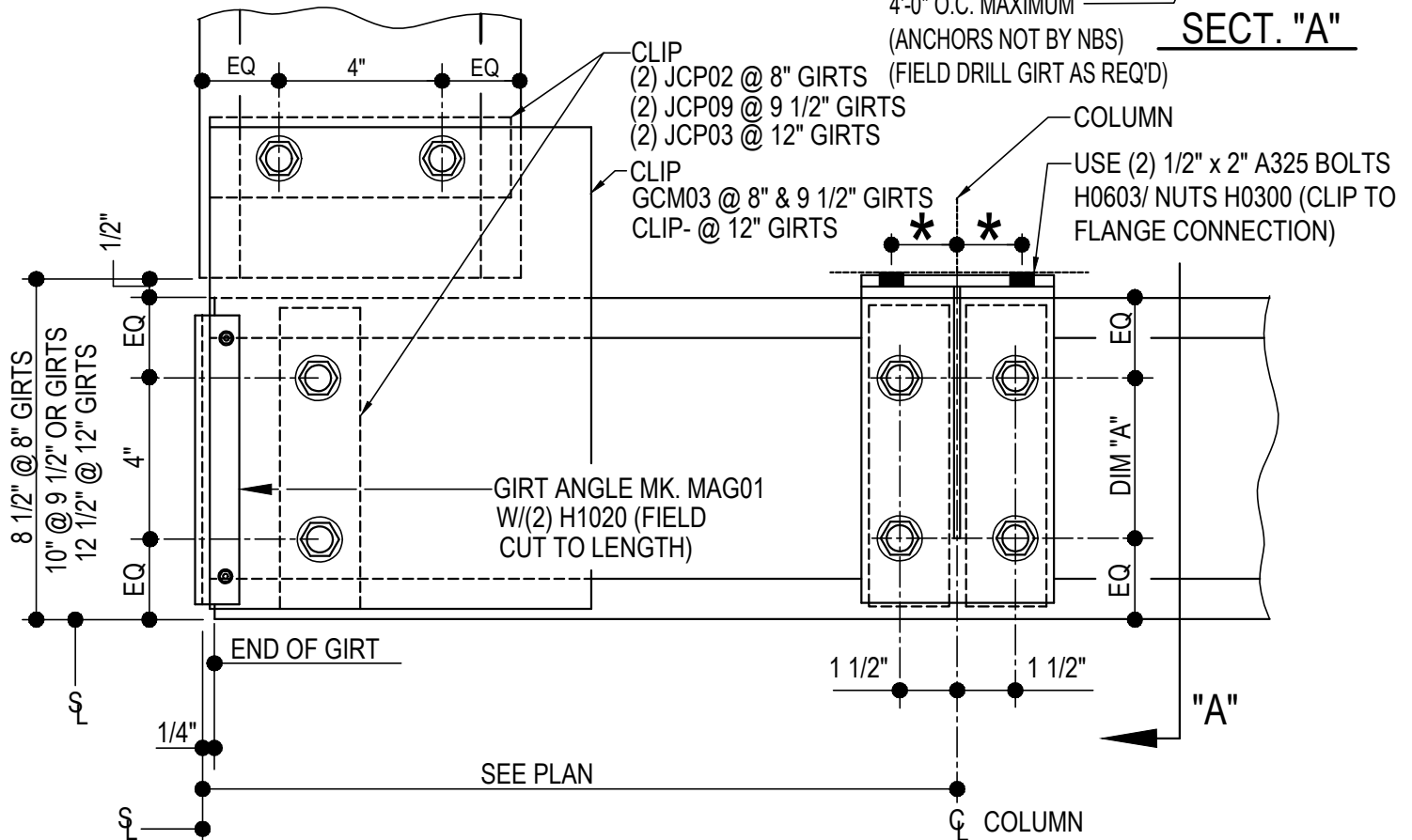
DIM. "A" = 4" AT 8" & 9 1/2" GIRTS
= 8" AT 12" GIRTS

GIRT CLIP MK. GCM__
(SEE CHART FOR
MARK NUMBER)

JCP02 AT 8" GIRTS
JCP09 AT 9 1/2" GIRTS
JCP03 AT 12" GIRTS

ATTACHMENT TO WALL AT
4'-0" O.C. MAXIMUM
(ANCHORS NOT BY NBS)

SECT. "A"



SPANDREL GIRT AT CORNER (BOLTED CLIP)

NOTE: USE (8) 1/2" X 1 1/4" A307 BOLTS H0500/NUTS H0400

REFERENCE ERECTOR NOTE FOR TYPICAL WASHER REQUIREMENTS

CF1021

Detailer Notes:

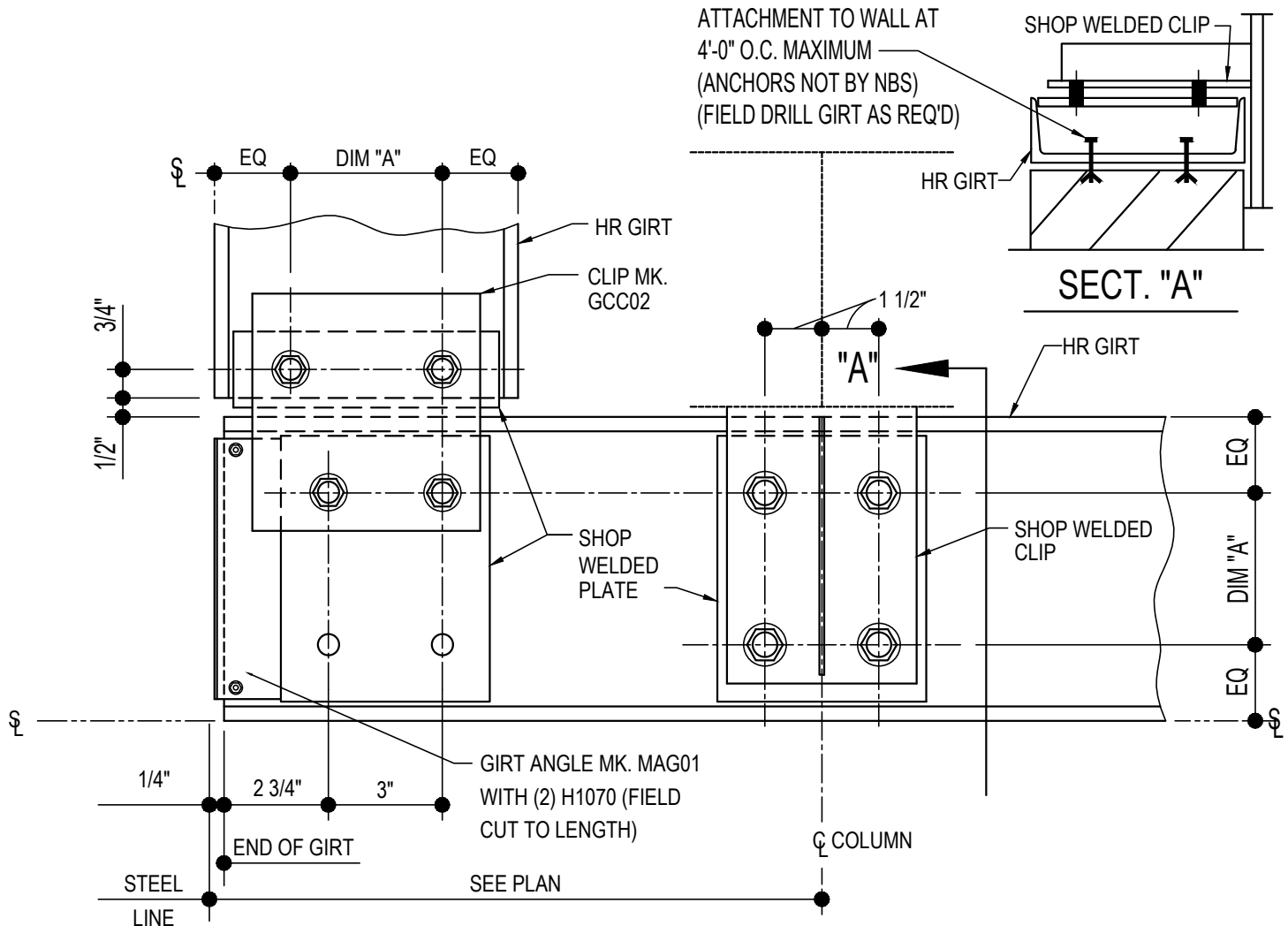
- 1) THIS DETAIL SHOULD BE USED AS THE STANDARD

CF1060 - HR SPANDREL GIRT AT CORNER (WELDED CLIP)

[Download the DWG file by clicking here.](#)

LEFT HAND DETAIL SHOWN,
RIGHT HAND OPPOSITE

DIM. "A" = 4" AT 8" & 9 1/2" GIRTS
= 8" AT 12" GIRTS



HR SPANDREL GIRT AT CORNER (WELDED CLIP)

NOTE: USE (8) 1/2" x 2" A325 BOLTS (H0603) & NUTS (H0300)

REFERENCE STANDARD WASHER DETAIL FOR TYPICAL WASHER
REQUIREMENTS

CF1060

Detailer Notes:

- 1) THIS DETAIL SHOULD BE USED ONLY WHEN REQUESTED BY THE CUSTOMER
- 2) SHOP WELDED BYPASS GIRT CLIP TO COLUMN: 8" GIRT = GCM04, 12" GIRT = GCB12
- 3) SHOP WELDED CLIP TO HOT ROLLED GIRT: 8" GIRT = HC_08, 12" GIRT = HC_12
- 4) ADD STIFFENER PER DESIGN TO GIRT CLIP: GCM04 = WS_04, GCB12 = WS_12

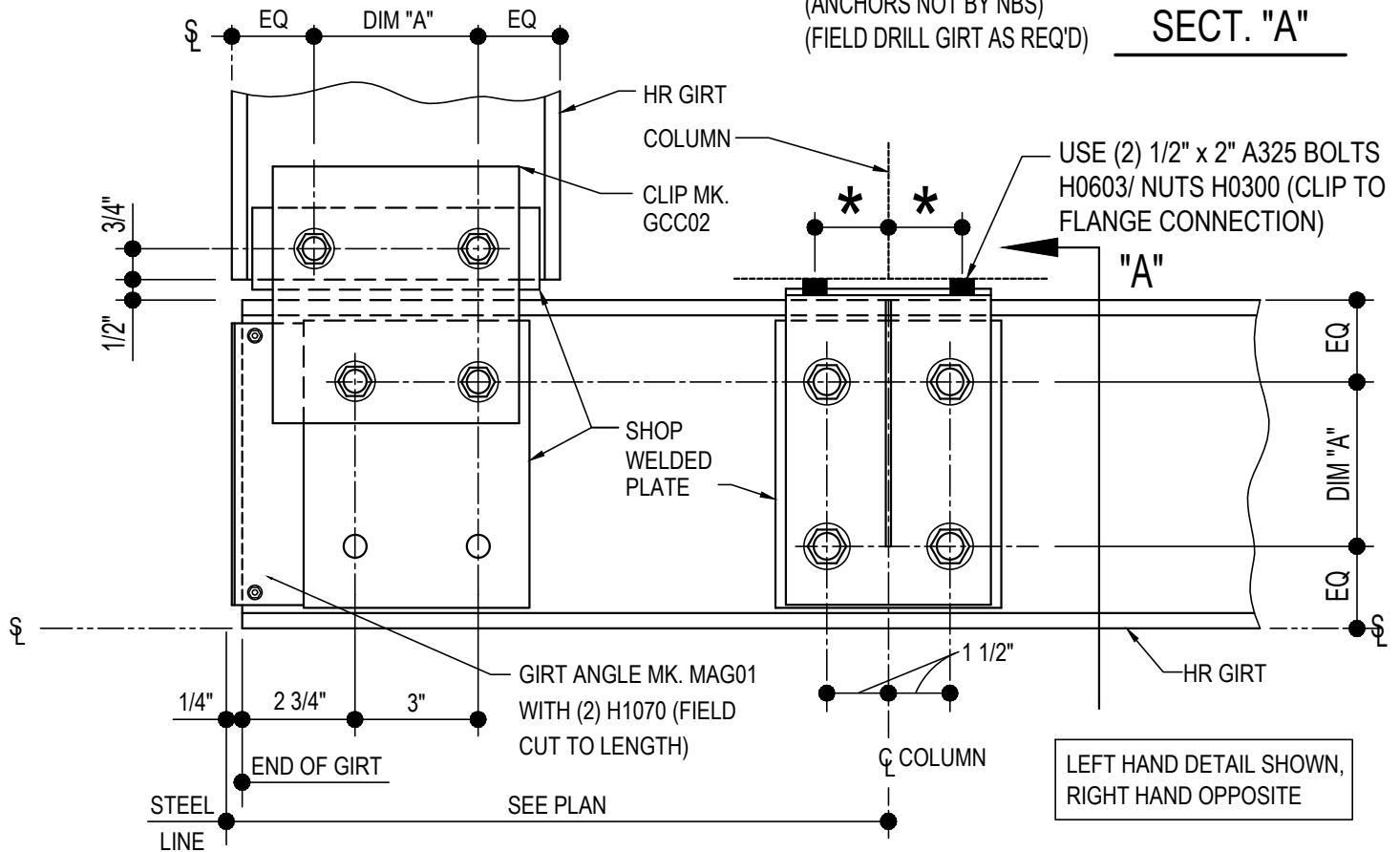
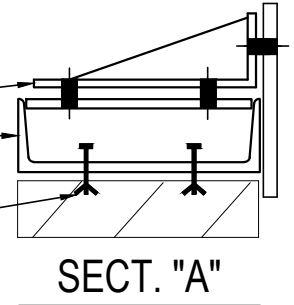
CF1061 - HR SPANDREL GIRT AT CORNER (WELDED CLIP)

[Download the DWG file by clicking here.](#)

COLUMN FLANGE WIDTH	*	8" GIRT CLIP	12" GIRT CLIP
FLANGE = 4"	1 1/8"	GCM11	GCM13
FLANGE > 4"	1 1/2"	GCM01	GCM06

DIM. "A" = 4" AT 8" & 9 1/2" GIRTS
= 8" AT 12" GIRTS

GIRT CLIP MK. GCM_ (SEE CHART FOR MARK NUMBER)
HR GIRT
ATTACHMENT TO WALL AT 4'-0" O.C. MAXIMUM (ANCHORS NOT BY NBS) (FIELD DRILL GIRT AS REQ'D)



LEFT HAND DETAIL SHOWN, RIGHT HAND OPPOSITE

HR SPANDREL GIRT AT CORNER (WELDED CLIP)

NOTE: USE (8) 1/2" x 2" A325 BOLTS (H0603) & NUTS (H0300)

REFERENCE STANDARD WASHER DETAIL FOR TYPICAL WASHER REQUIREMENTS

CF1061

Detailer Notes:

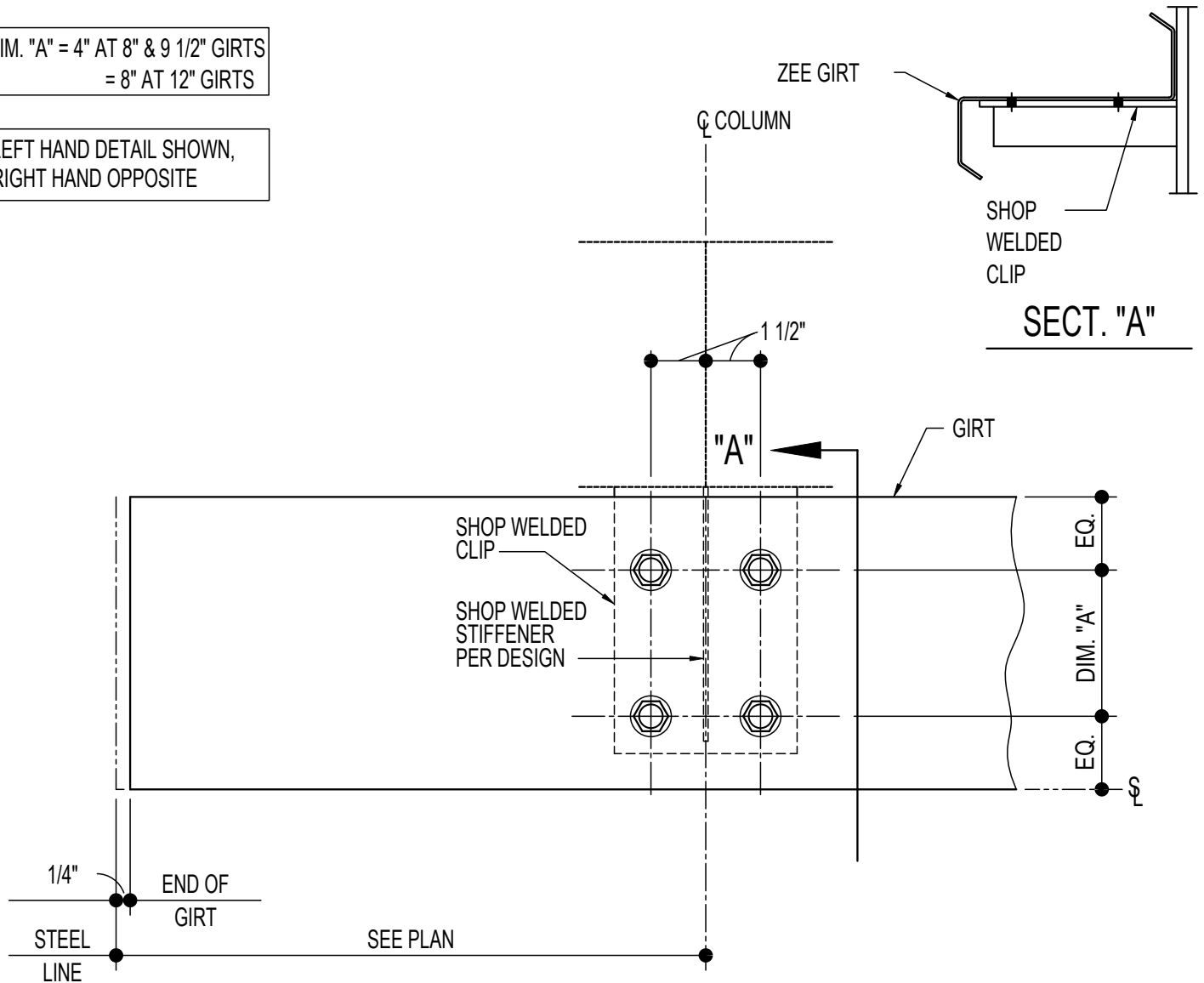
- 1) THIS DETAIL SHOULD BE USED AS THE STANDARD
- 2) SHOP WELDED CLIP TO HOT ROLLED GIRT: 8" GIRT = HC_08, 12" GIRT = HC_12

CF1200 - BYPASS CORNER GIRT TERMINATION DETAIL

[Download the DWG file by clicking here.](#)

DIM. "A" = 4" AT 8" & 9 1/2" GIRTS
= 8" AT 12" GIRTS

LEFT HAND DETAIL SHOWN,
RIGHT HAND OPPOSITE



GIRT TERMINATION DETAIL

LEFT HAND DETAIL SHOWN, RIGHT HAND OPPOSITE

NOTE: USE (4) 1/2" x 1 1/4" A307 BOLTS H0500/NUTS H0400

REFERENCE STANDARD WASHER DETAIL FOR TYPICAL WASHER REQUIREMENTS

CF1200

Detailer Notes:

- 1) (4) HOLE WELDED CLIP:
8" - PCU01
9 1/2" - GCB62
12" - GCB12

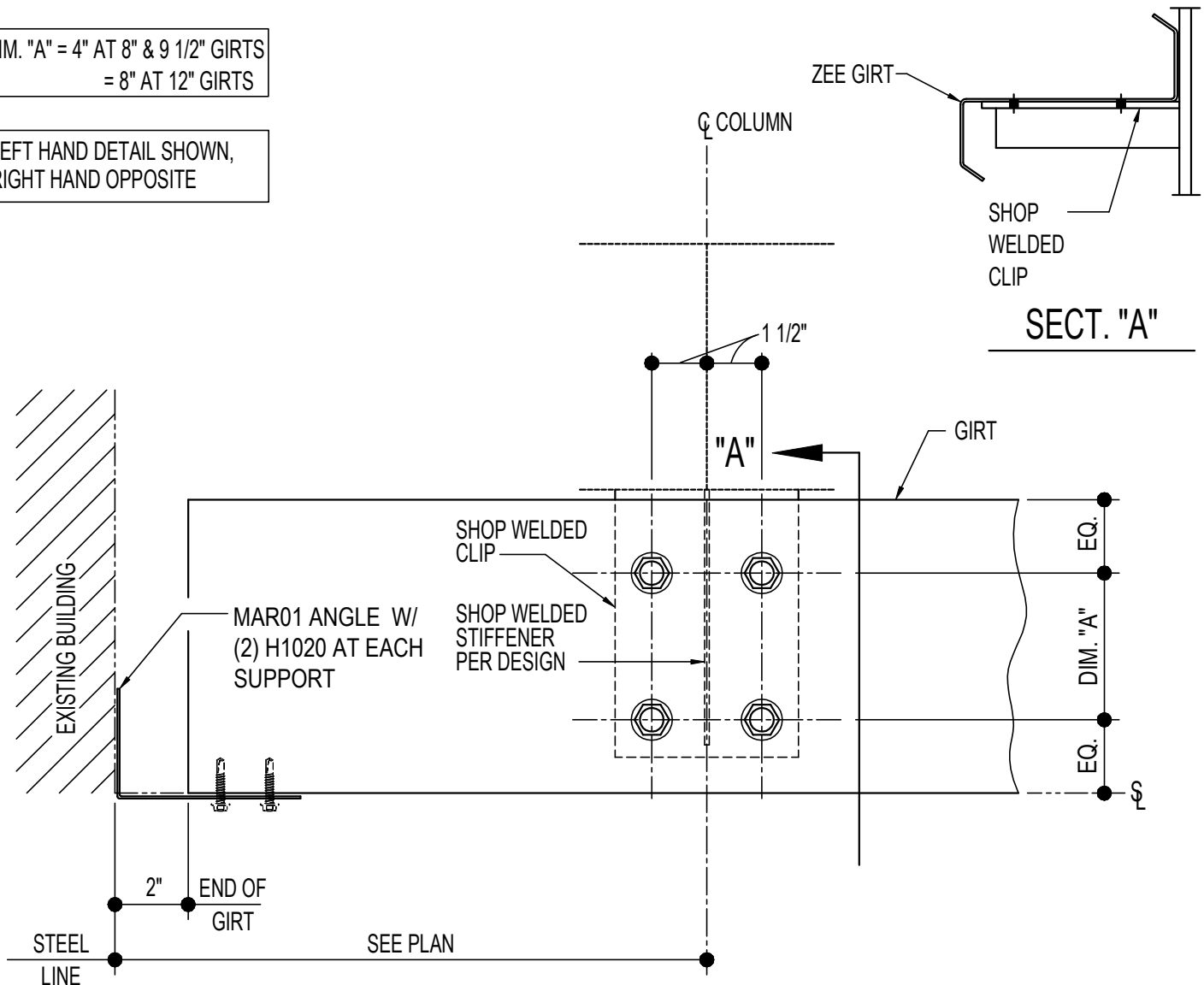
- 2) ADD STIFFENER PER DESIGN:
8" GIRT: WS_04
9 1/2" GIRT: WS_04
12" GIRT: WS_12

CF1201 - BYPASS CORNER GIRT TERMINATION DETAIL

[Download the DWG file by clicking here.](#)

DIM. "A" = 4" AT 8" & 9 1/2" GIRTS
= 8" AT 12" GIRTS

LEFT HAND DETAIL SHOWN,
RIGHT HAND OPPOSITE



SECT. "A"

GIRT TERMINATION AT EXISTING DETAIL

LEFT HAND DETAIL SHOWN, RIGHT HAND OPPOSITE

NOTE: USE (4) 1/2" x 1 1/4" A307 BOLTS H0500/NUTS H0400

REFERENCE STANDARD WASHER DETAIL FOR TYPICAL WASHER REQUIREMENTS

CF1201

Detailer Notes:

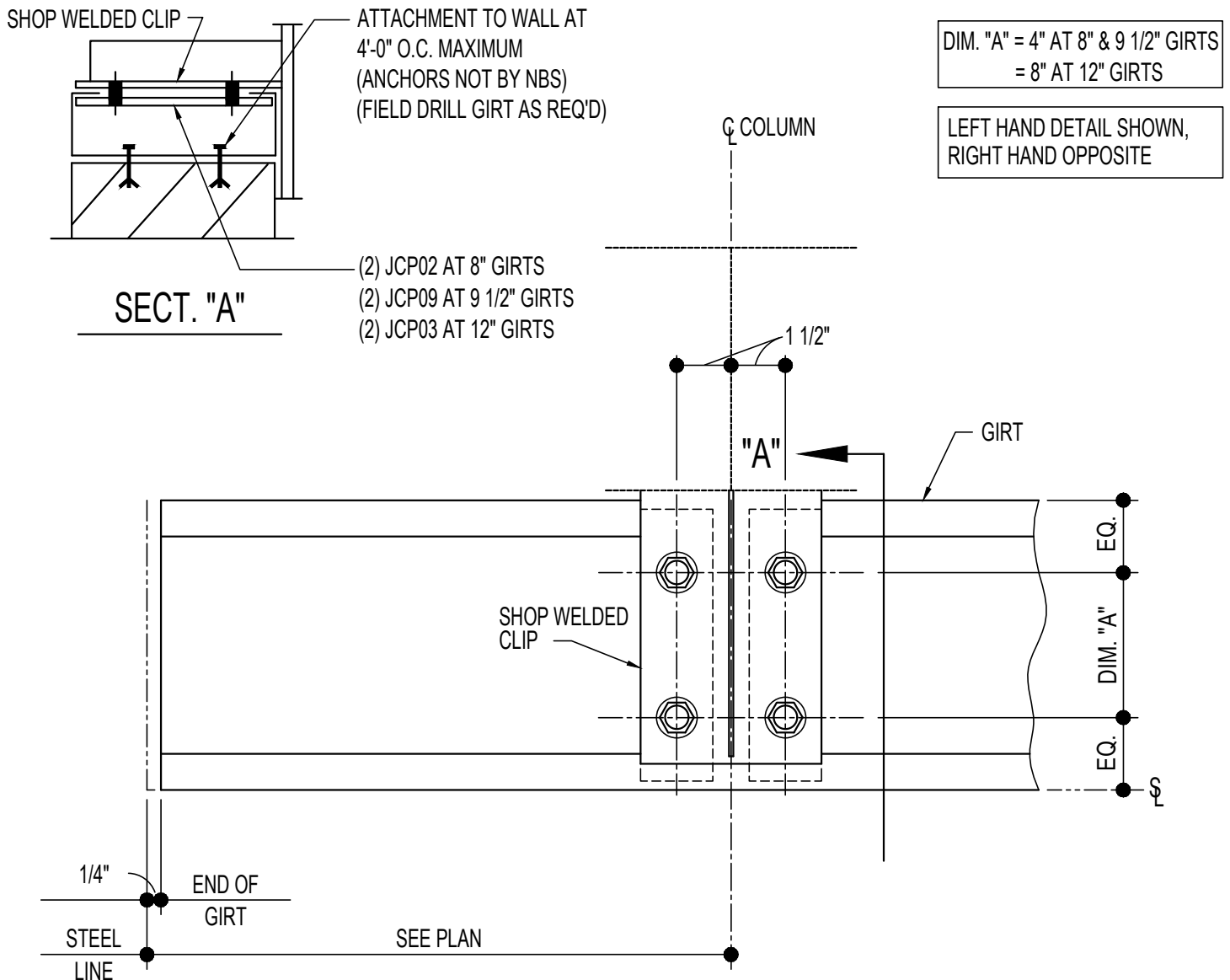
- 1) (4) HOLE WELDED CLIP:
8" - PCU01
9 1/2" - GCB62
12" - GCB12

- 2) ADD STIFFENER PER DESIGN:
8" GIRT: WS_04
9 1/2" GIRT: WS_04
12" GIRT: WS_12

- 3) MAR01 angle and H1020 fasteners will need to be added by hand in Tekla or PartsList

CF1210 - SPANDREL GIRT TERMINATION (WELDED CLIP)

[Download the DWG file by clicking here.](#)



SPANDREL GIRT TEMINATION (WELDED CLIP)

NOTE: USE (4) 1/2" x 1 1/4" A307 BOLTS H0500/NUTS H0400
REFERENCE STANDARD WASHER DETAIL FOR TYPICAL WASHER REQUIREMENTS

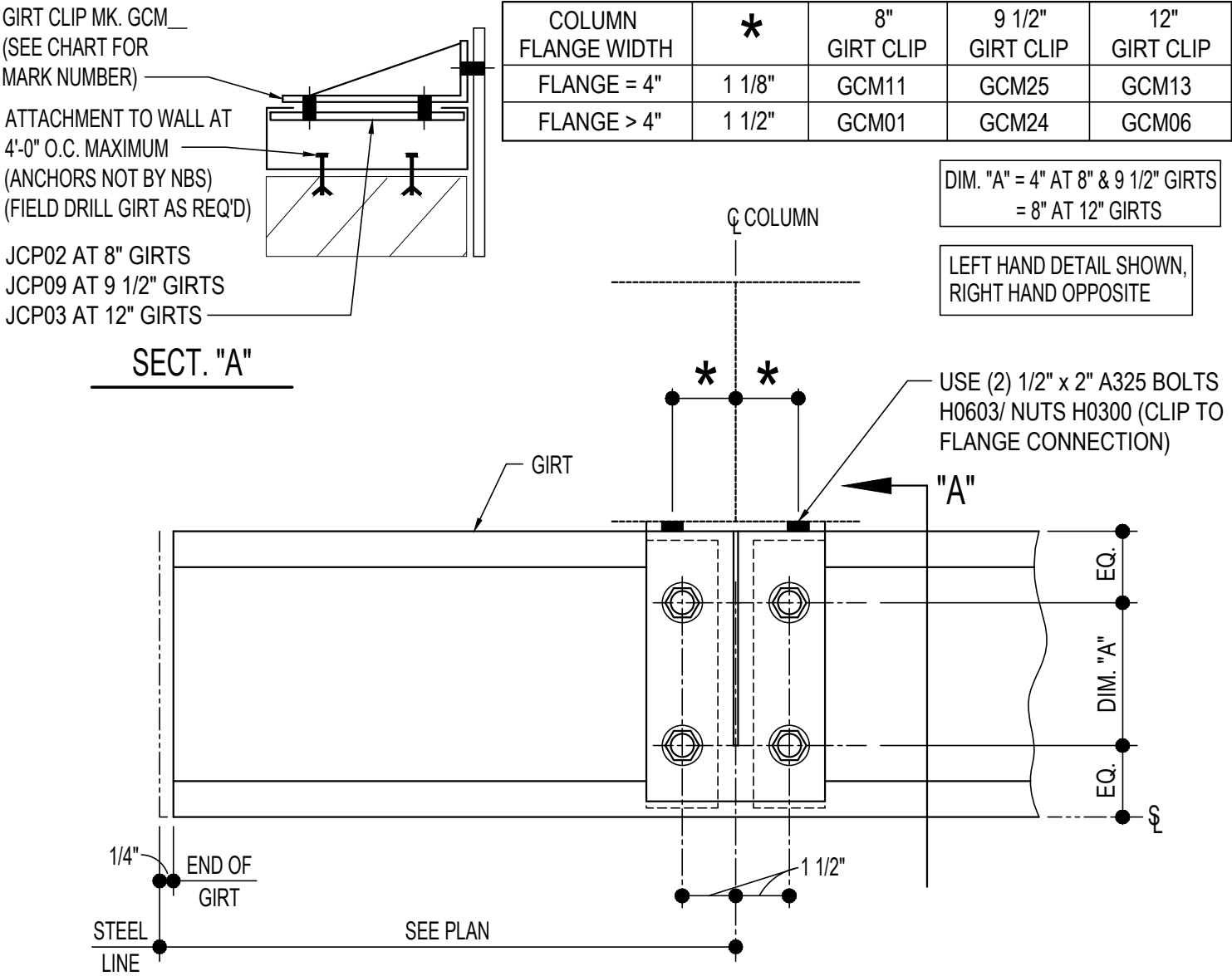
CF1210

Detailer Notes:

- 1) THIS DETAIL SHOULD BE USED ONLY WHEN REQUESTED BY THE CUSTOMER
- 2) SHOP WELDED BYPASS GIRT CLIP TO COLUMN: 8" GIRT = GCM04, 9 1/2" GIRT = GCM95, 12" GIRT = GCM12
- 3) ADD STIFFENER PER DESIGN TO GIRT CLIP: GCM04 = WS_04, GCM95 = WS_04, GCM12 = WS_12

CF1211 - SPANDREL GIRT TERMINATION (BOLTED CLIP)

[Download the DWG file by clicking here.](#)



SPANDREL GIRT TERMINATION (BOLTED CLIP)

NOTE: USE (4) 1/2" x 1 1/4" A307 BOLTS H0500/NUTS H0400
REFERENCE STANDARD WASHER DETAIL FOR TYPICAL WASHER REQUIREMENTS

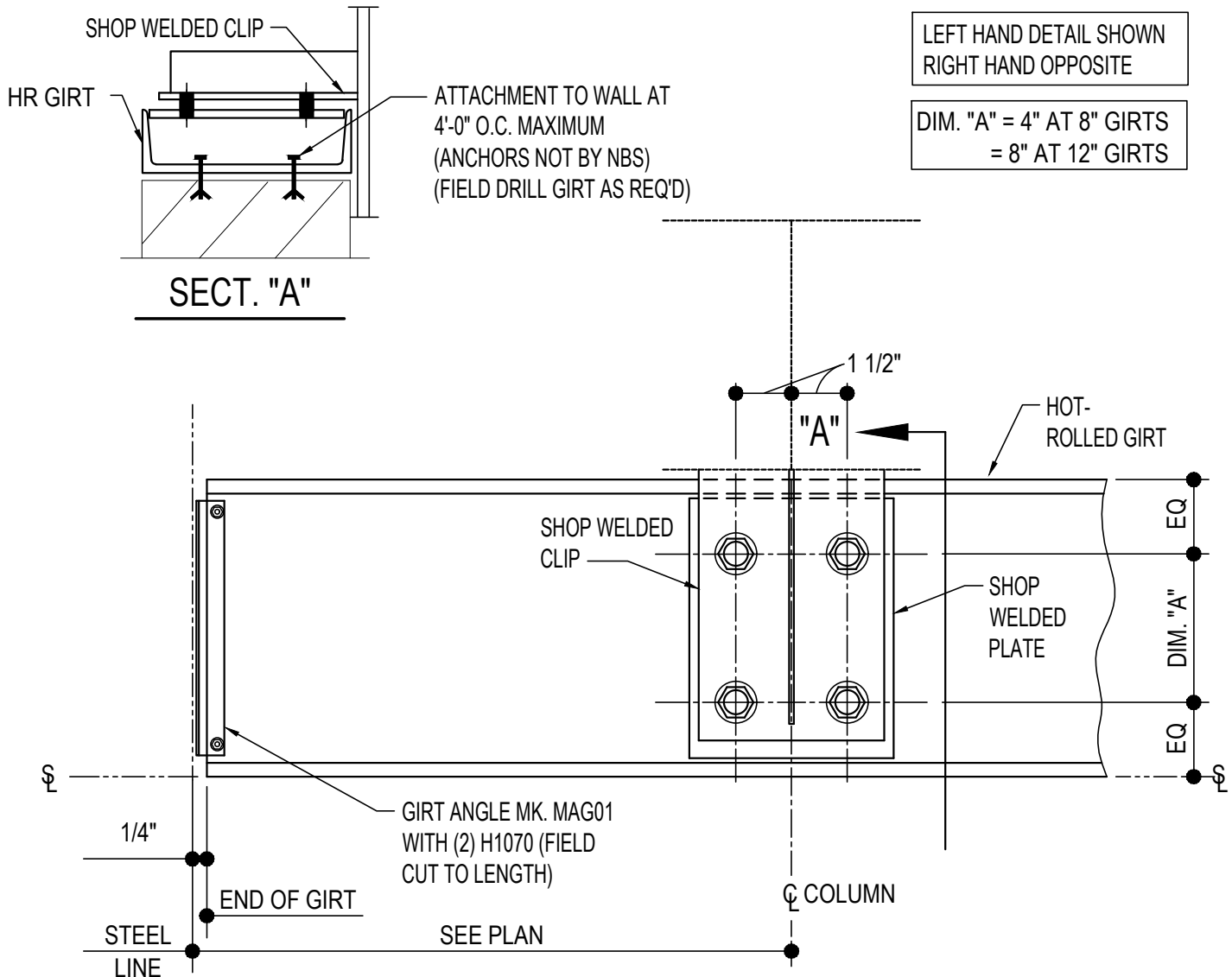
CF1211

Detailer Notes:

1) THIS DETAIL SHOULD BE USED AS THE STANDARD

CF1220 - HR SPANDREL GIRT TERMINATION (WELDED CLIP)

[Download the DWG file by clicking here.](#)



HR SPANDREL GIRT TERMINATION (WELDED CLIP)

NOTE: USE (4) 1/2" x 2" A325 BOLTS (H0603) & NUTS (H0300)
REFERENCE STANDARD WASHER DETAIL FOR TYPICAL WASHER REQUIREMENTS

CF1220

Detailer Notes:

- 1) THIS DETAIL SHOULD BE USED ONLY WHEN REQUESTED BY THE CUSTOMER
- 2) SHOP WELDED BYPASS GIRT TO COLUMN: 8" GIRT = GCM04, 12" GIRT = GCB12
- 3) SHOP WELDED CLIP TO HOT ROLLED GIRT: 8" GIRT = HC_08, 12" GIRT = HC_12
- 4) ADD STIFFENER PER DESIGN TO GIRT CLIP: GCM04 = WS_04, GCB12 = WS_12

CF1221 - HR SPANDREL GIRT TERMINATION (BOLTED CLIP)

[Download the DWG file by clicking here.](#)

GIRT CLIP MK. GCM__
(SEE CHART FOR
MARK NUMBER)
HR GIRT
ATTACHMENT TO WALL AT
4'-0" O.C. MAXIMUM
(ANCHORS NOT BY NBS)
(FIELD DRILL GIRT AS REQ'D)

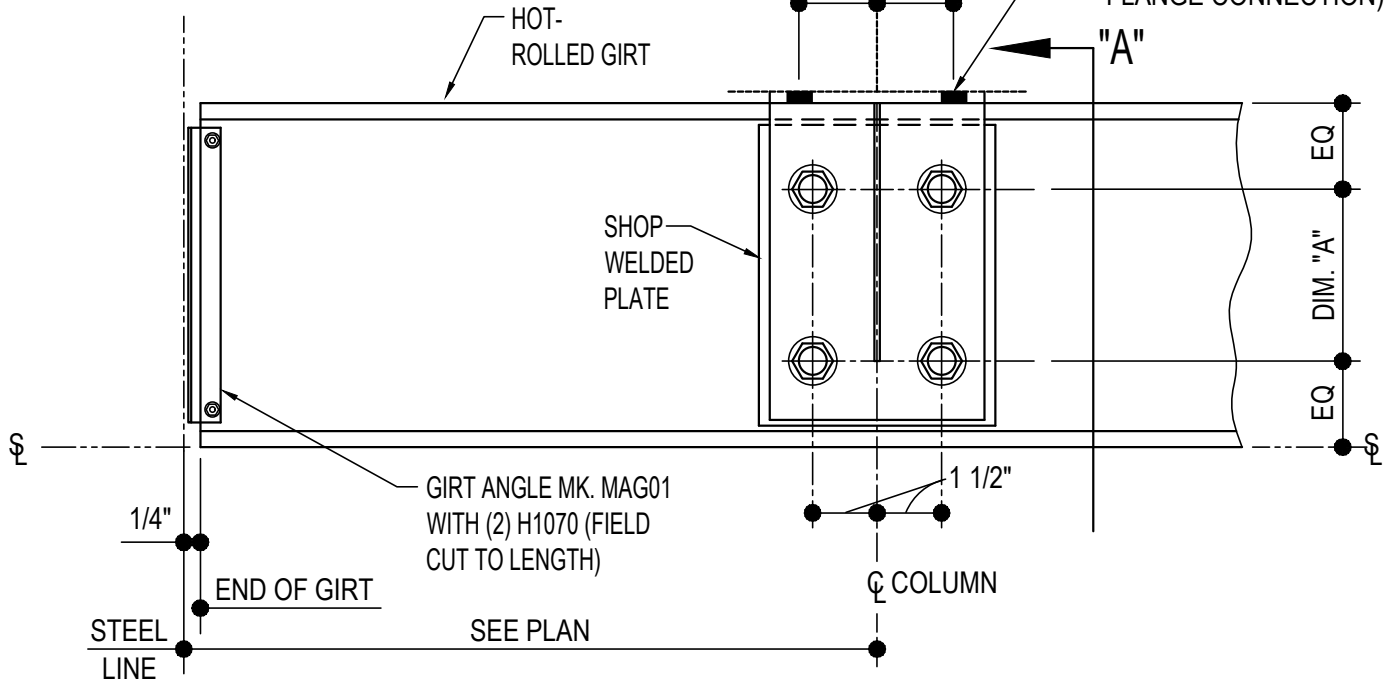
SECT. "A"

COLUMN FLANGE WIDTH	*	8" GIRT CLIP	12" GIRT CLIP
FLANGE = 4"	1 1/8"	GCM11	GCM13
FLANGE > 4"	1 1/2"	GCM01	GCM06

LEFT HAND DETAIL SHOWN
RIGHT HAND OPPOSITE

DIM. "A" = 4" AT 8" GIRTS
= 8" AT 12" GIRTS

USE (2) 1/2" x 2" A325 BOLTS
H0603/ NUTS H0300 (CLIP TO
FLANGE CONNECTION)



HR SPANDREL GIRT TERMINATION (BOLTED CLIP)

NOTE: USE (4) 1/2" x 2" A325 BOLTS (H0603) & NUTS (H0300)
REFERENCE STANDARD WASHER DETAIL FOR TYPICAL WASHER
REQUIREMENTS

CF1221

Detailer Notes:

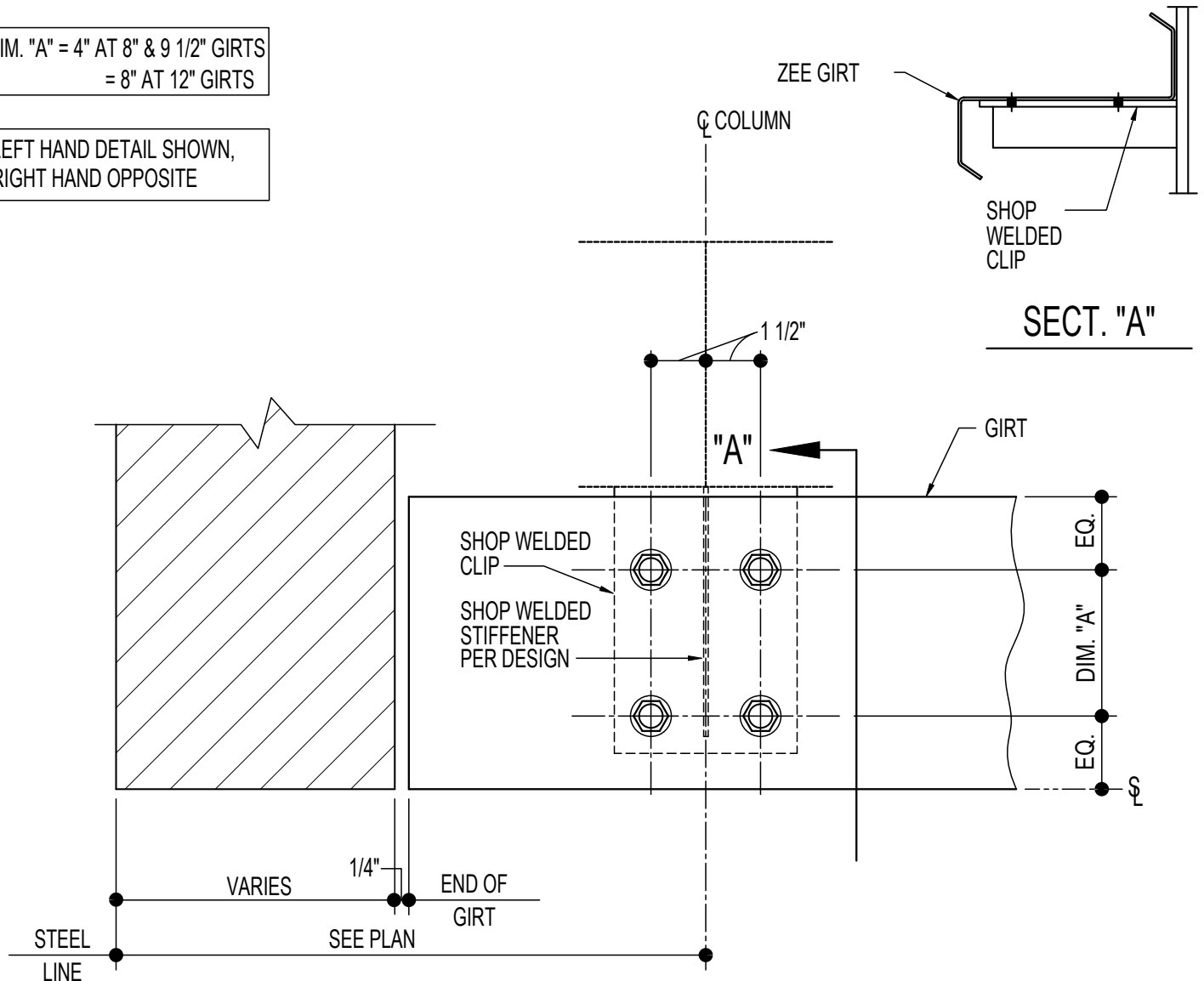
- 1) THIS DETAIL SHOULD BE USED AS THE STANDARD
- 2) SHOP WELDED CLIP TO HOT ROLLED GIRT: 8" GIRT = HC_08, 12" GIRT = HC_12

CF1260 - BYPASS CORNER GIRT TERMINATION @ MASONRY WALL DETAIL

[Download the DWG file by clicking here.](#)

DIM. "A" = 4" AT 8" & 9 1/2" GIRTS
= 8" AT 12" GIRTS

LEFT HAND DETAIL SHOWN,
RIGHT HAND OPPOSITE



GIRT TERMINATION DETAIL

NOTE: USE (4) 1/2" x 1 1/4" A307 BOLTS H0500/NUTS H0400

REFERENCE STANDARD WASHER DETAIL FOR TYPICAL WASHER REQUIREMENTS

CF1260

Detailer Notes:

1) (4) HOLE WELDED CLIP:
8" - PCU01
9 1/2" - GCB62
12" - GCB12

2) ADD STIFFENER PER DESIGN:
8" GIRT: WS_04
9 1/2" GIRT: WS_04
12" GIRT: WS_12

CF1271 - SPANDREL GIRT TERMINATION AT WALL (BOLTED CLIP)

[Download the DWG file by clicking here.](#)

GIRT CLIP MK. GCM__
(SEE CHART FOR
MARK NUMBER)

ATTACHMENT TO WALL AT
4'-0" O.C. MAXIMUM
(ANCHORS NOT BY NBS)
(FIELD DRILL GIRT AS REQ'D)

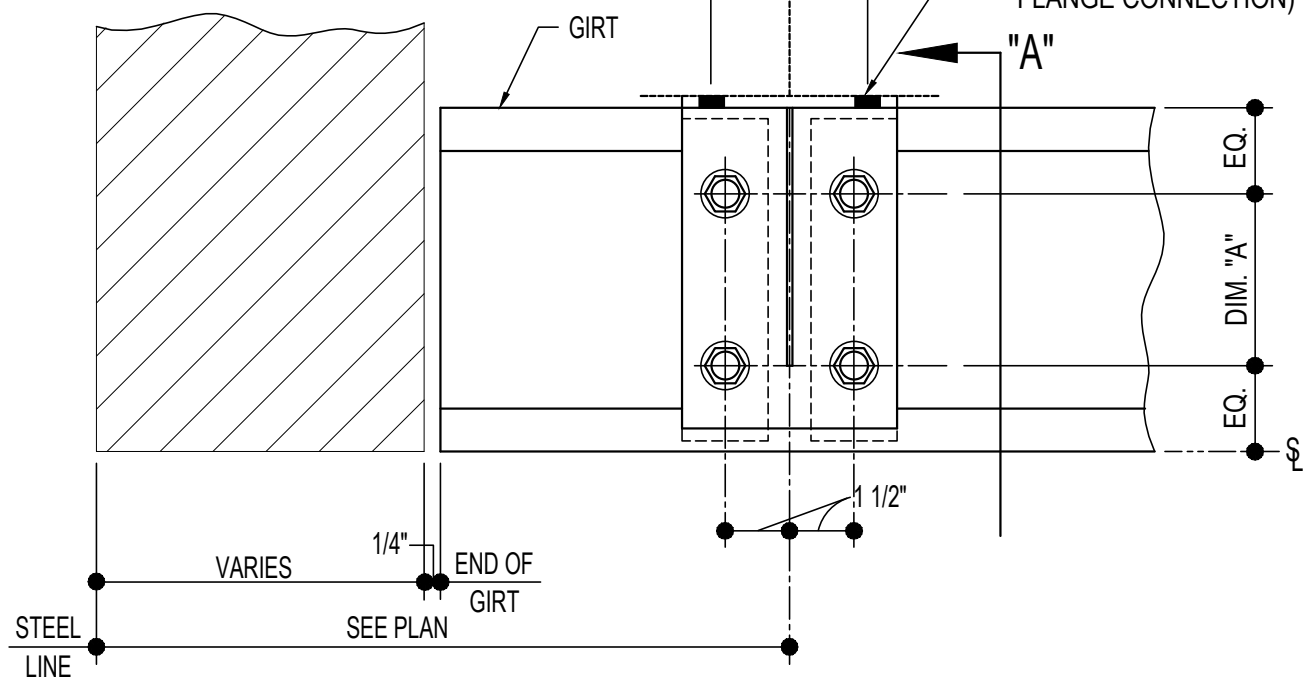
JCP02 AT 8" GIRTS
JCP09 AT 9 1/2" GIRTS
JCP03 AT 12" GIRTS

COLUMN FLANGE WIDTH	*	8" GIRT CLIP	9 1/2" GIRT CLIP	12" GIRT CLIP
FLANGE = 4"	1 1/8"	GCM11	GCM25	GCM13
FLANGE > 4"	1 1/2"	GCM01	GCM24	GCM06

DIM. "A" = 4" AT 8" & 9 1/2" GIRTS
= 8" AT 12" GIRTS

LEFT HAND DETAIL SHOWN,
RIGHT HAND OPPOSITE

SECT. "A"



SPANDREL GIRT TERMINATION AT WALL (BOLTED CLIP)

NOTE: USE (4) 1/2" x 1 1/4" A307 BOLTS H0500/NUTS H0400

REFERENCE STANDARD WASHER DETAIL FOR TYPICAL WASHER
REQUIREMENTS

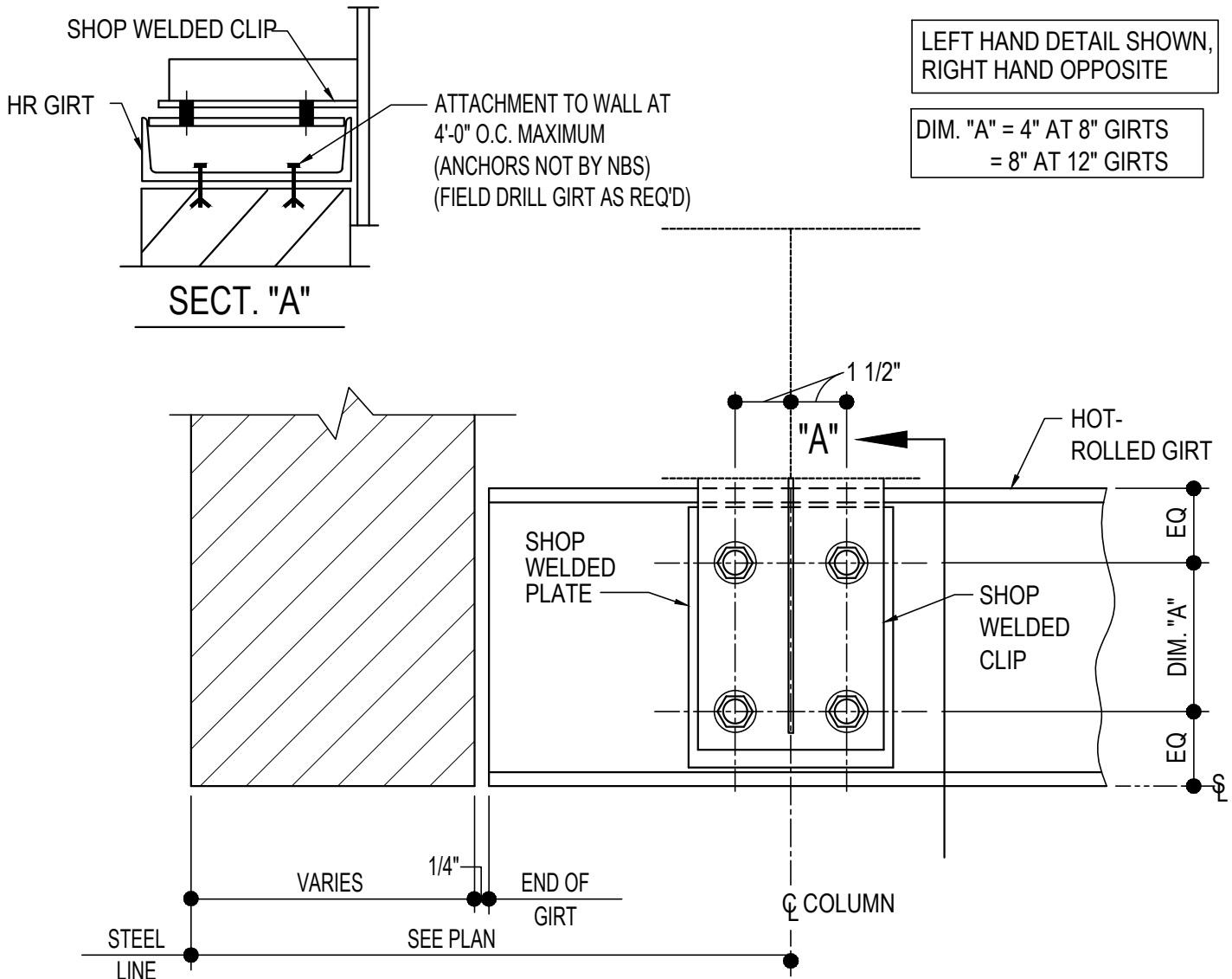
CF1271

Detailer Notes:

- 1) THIS DETAIL SHOULD BE USED AS THE STANDARD

CF1280 - HR SPANDREL GIRT TERMINATION AT WALL (WELDED CLIP)

[Download the DWG file by clicking here.](#)



HR SPANDREL GIRT TERMINATION AT WALL (WELDED CLIP)

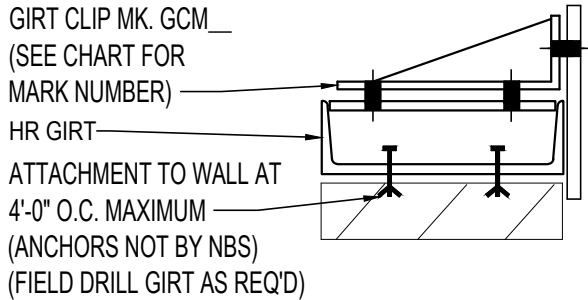
NOTE: USE (4) 1/2" x 2" A325 BOLTS (H0603) & NUTS (H0300)
REFERENCE STANDARD WASHER DETAIL FOR TYPICAL WASHER REQUIREMENTS

CF1280

- Detailer Notes:
- 1) THIS DETAIL SHOULD BE USED ONLY WHEN REQUESTED BY THE CUSTOMER
 - 2) SHOP WELDED BYPASS GIRT CLIP TO COLUMN: 8" GIRT = GCM04, 12" GIRT = GCB12
 - 3) SHOP WELDED CLIP TO HOT ROLLED GIRT: 8" GIRT = HC_08, 12" GIRT = HC_12
 - 4) ADD STIFFENER PER DESIGN TO GIRT CLIP: GCM04 = WS_04, GCB12 = WS_12

CF1281 - HR SPANDREL GIRT TERMINATION AT WALL (BOLTED CLIP)

[Download the DWG file by clicking here.](#)

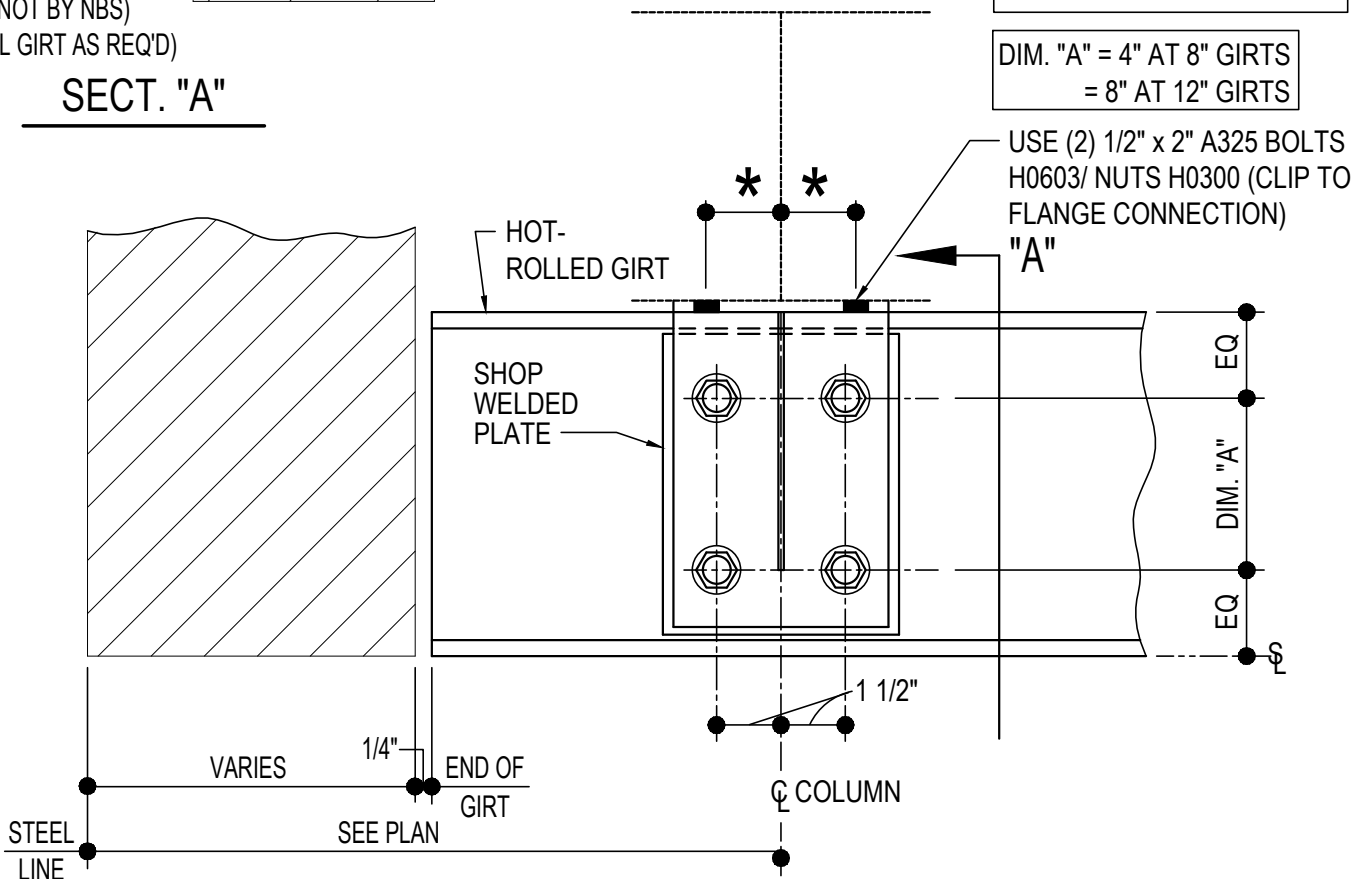


SECT. "A"

COLUMN FLANGE WIDTH	*	8" GIRT CLIP	12" GIRT CLIP
FLANGE = 4"	1 1/8"	GCM11	GCM13
FLANGE > 4"	1 1/2"	GCM01	GCM06

LEFT HAND DETAIL SHOWN, RIGHT HAND OPPOSITE

DIM. "A" = 4" AT 8" GIRTS
= 8" AT 12" GIRTS



HR SPANDREL GIRT TERMINATION AT WALL (BOLTED CLIP)

NOTE: USE (4) 1/2" x 2" A325 BOLTS (H0603) & NUTS (H0300)
REFERENCE STANDARD WASHER DETAIL FOR TYPICAL WASHER REQUIREMENTS

CF1281

Detailer Notes:

- 1) THIS DETAIL SHOULD BE USED AS THE STANDARD
- 2) SHOP WELDED CLIP TO HOT ROLLED GIRT: 8" GIRT = HC_08, 12" GIRT = HC_12