

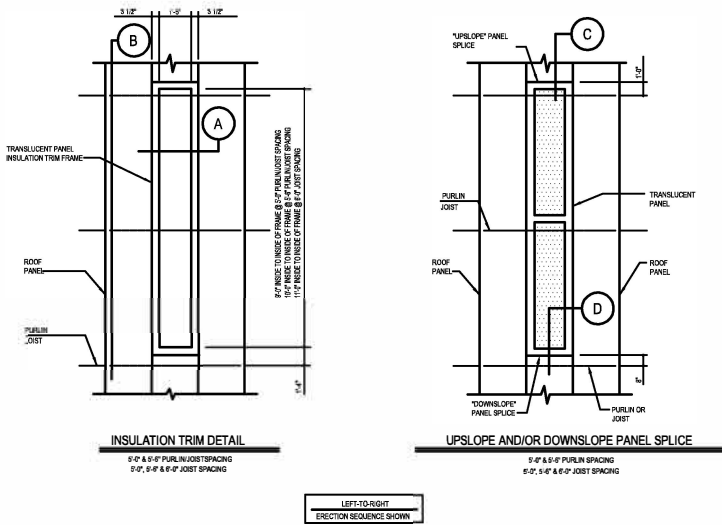
FM6010 - COMPOSITE CFR ROOF

Download the DWG file by clicking here.

COMPOSITE C.F.R. TRANSLUCENT ROOF PANEL INSTALLATION INSTRUCTIONS

ERECTOR NOTE: THE DETAILS SHOWN ON THIS PAGE REFLECT LEFT-TO-RIGHT PANEL ERECTION SEQUENCE. IF THE PANELS ARE BEING INSTALLED FROM RIGHT-TO-LEFT, THE DETAILS ARE OPPOSITE HAND OF WHAT IS SHOWN.

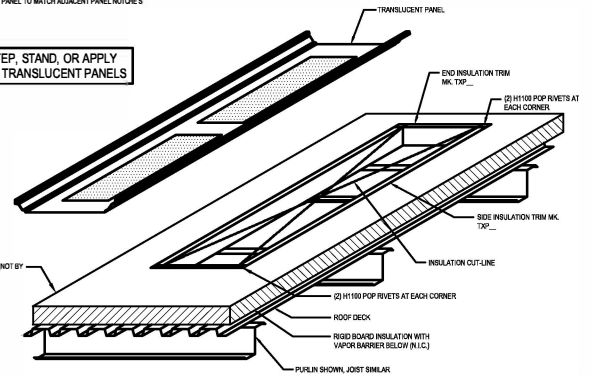
TRANSLUCENT PANEL LAYOUT - PLAN VIEWS



ERECTION NOTES:

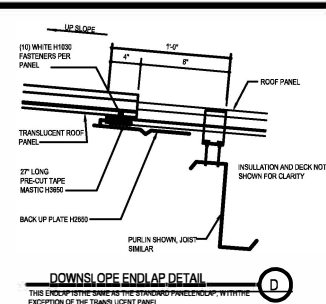
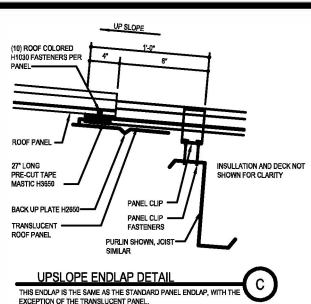
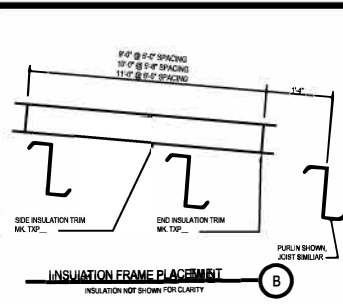
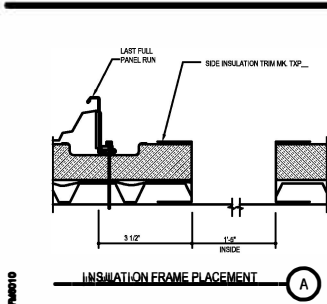
- 1) INSTALL PANELS UP TO TRANSLUCENT PANEL LOCATION
- 2) LAYOUT TRANSLUCENT PANEL OPENING ON THE R/S/DI BOARD INSULATION WITH THE DIMENSIONS GIVEN BELOW.
- 3) CUT OUT ROOF BOARD INSULATION AND THE ROOF DECK
- 4) ASSEMBLE TRIM AROUND THE PERIMETER OF OPENING, FASTEN TO THE UNDER SIDE OF THE DECK WITH TRIM COLORED H1955 AT 4'-0" O.C.
- 5) FIELD COPE TRIM AT CORNERS AS REQUIRED.
- 6) INSTALL TRANSLUCENT PANEL.
- 7) INSTALL END LAP AS NOTED.
- 8) WHEN TRANSLUCENT PANELS ARE USED AT THE RIDGE OR HIGH PARAPET, FIELD NOTCH TOP OF PANEL TO MATCH ADJACENT PANEL NOTCHES

NEVER STEP, STAND, OR APPLY WEIGHT TO TRANSLUCENT PANELS



GENERAL NOTES:

- 1) THE TRANSLUCENT PANEL MUST BE HAND CRIMPED MECHANICALLY SEALED THE FULL LENGTH OF, ON BOTH SIDES, WITH THE PROPER TOOL, TO ACHIEVE A MINIMUM OF A VISE LOCK BEAM PROFILE.
- 2) END TO END TRANSLUCENT PANELS SHOULD BE SPACED SO THAT THE METAL PANELS ABOVE, BETWEEN AND BELOW ARE RESTING ON A MINIMUM OF (2) PURLINS. (REF. DRAWING 6). NOSIMPLE SPAN ROOF PANEL CONDITIONS ARE ALLOWED.
- 3) A MINIMUM OF (4) METAL PANELS IS REQUIRED BETWEEN SIDE SOF MULTIPLE TRANSLUCENT PANEL LOCATIONS. TRANSLUCENT PANELS SHALL NOT BE PLACED SIDE BY SIDE.
- 4) TRANSLUCENT PANELS SHALL NOT BE PLACED FROM EAVE TO EAVE.
- 5) TRANSLUCENT PANELS SHALL NOT BE PLACED AT THE LOW EAVE OF THE BUILDING.
- 6) THE LOCATION OF THE FIRST TRANSLUCENT PANEL UP FROM THE LOW EAVE SHOULD BE SET SO THAT THE LOW EAVE METAL PANELS SUPPORTED BY (4) PURLIN (OR APPROXIMATELY 15' EAVE).



Detailer Notes:

- 1) DETAIL IS USED FOR ALL COMPOSITE CFR JOBS.