

ROOF CURB DETAILS

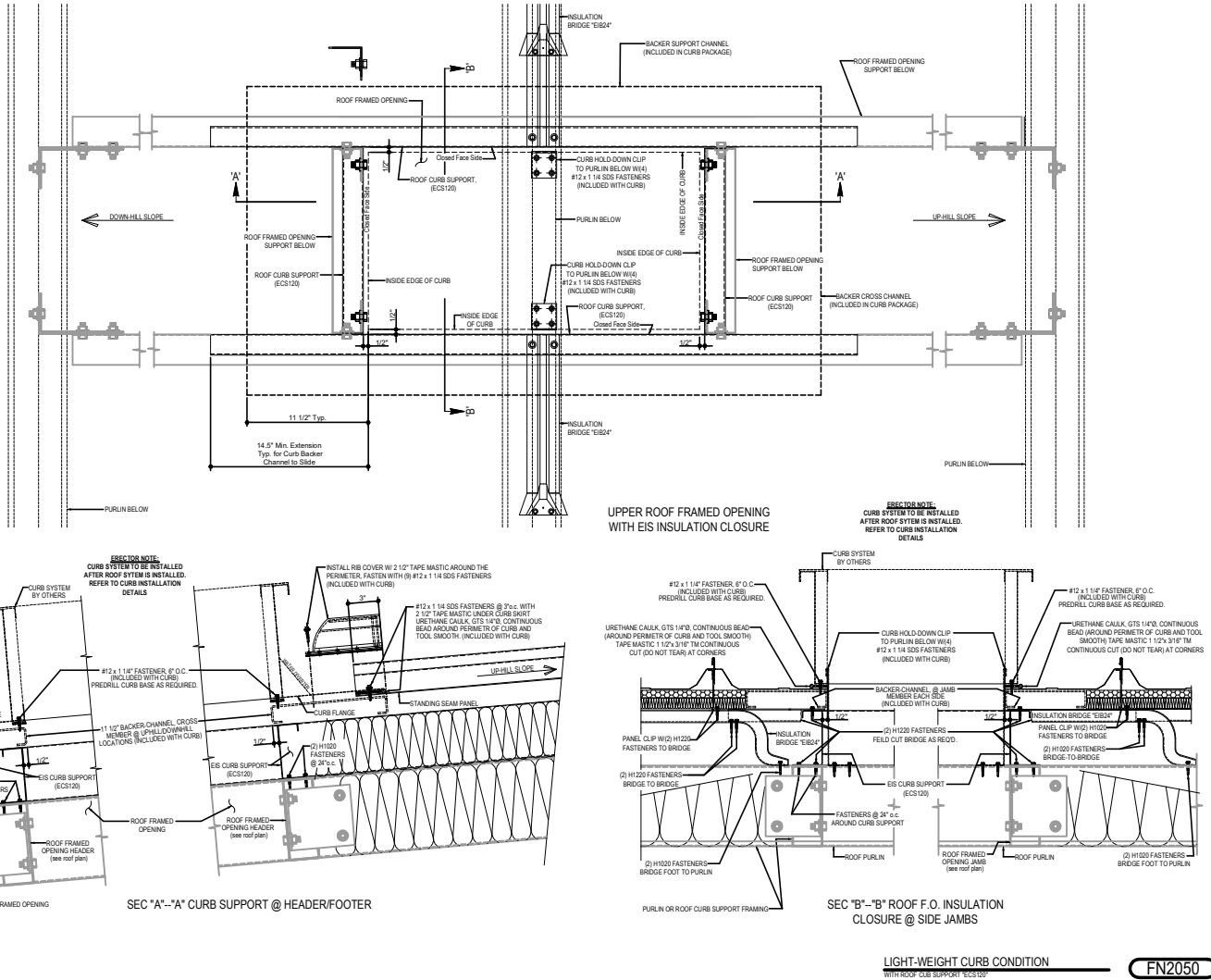
FN2050 - LIGHTWEIGHT ROOF CURB DETAIL FOR RTU \leq 750#

FN2060 - SINGLE ROOF CURB DETAIL FOR RTU \leq 750#

FN2080 - DOUBLE ROOF CURB DETAIL FOR RTU \geq 750#

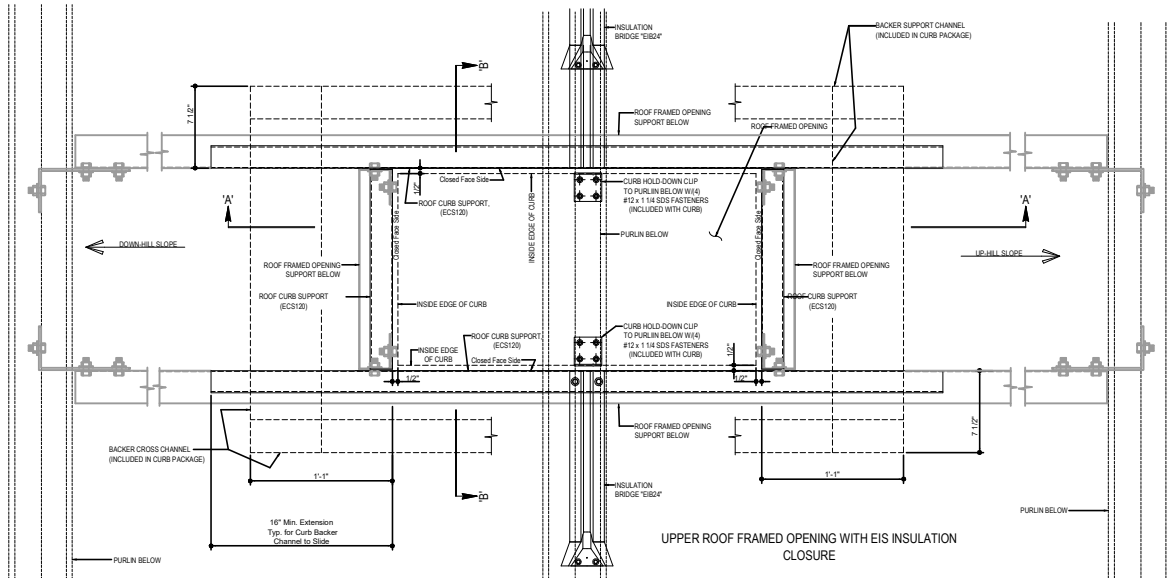
FN2050 - LIGHTWEIGHT ROOF CURB DETAILS FOR RTU <= 750#

[Download the DWG file by clicking here.](#)



FN2060 - SINGLE ROOF CURB DETAILS FOR RTU <= 750#

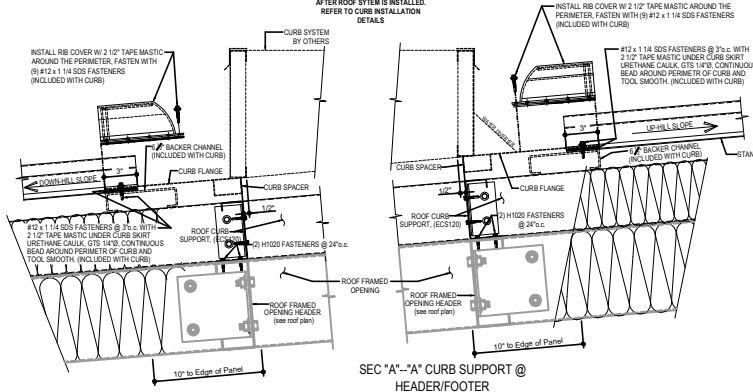
Download the DWG file by clicking here.



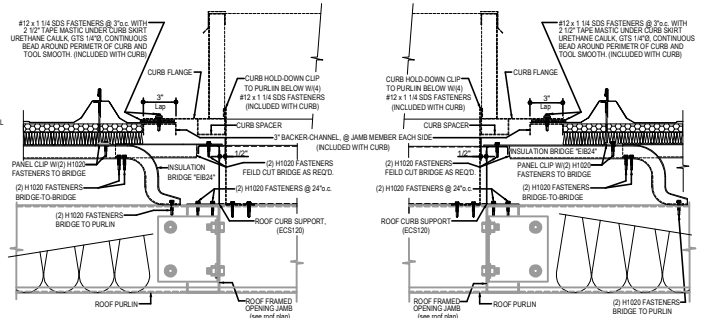
UPPER ROOF FRAMED OPENING WITH EIS INSULATION CLOSURE

ERECTOR NOTE:
CURB SYSTEM TO BE INSTALLED AFTER ROOF SYSTEM IS INSTALLED. REFER TO CURB INSTALLATION DETAILS

ERECTOR NOTE:
CURB SYSTEM TO BE INSTALLED AFTER ROOF SYSTEM IS INSTALLED. REFER TO CURB INSTALLATION DETAILS



SEC "A"-A' CURB SUPPORT @ HEADER/FOOTER



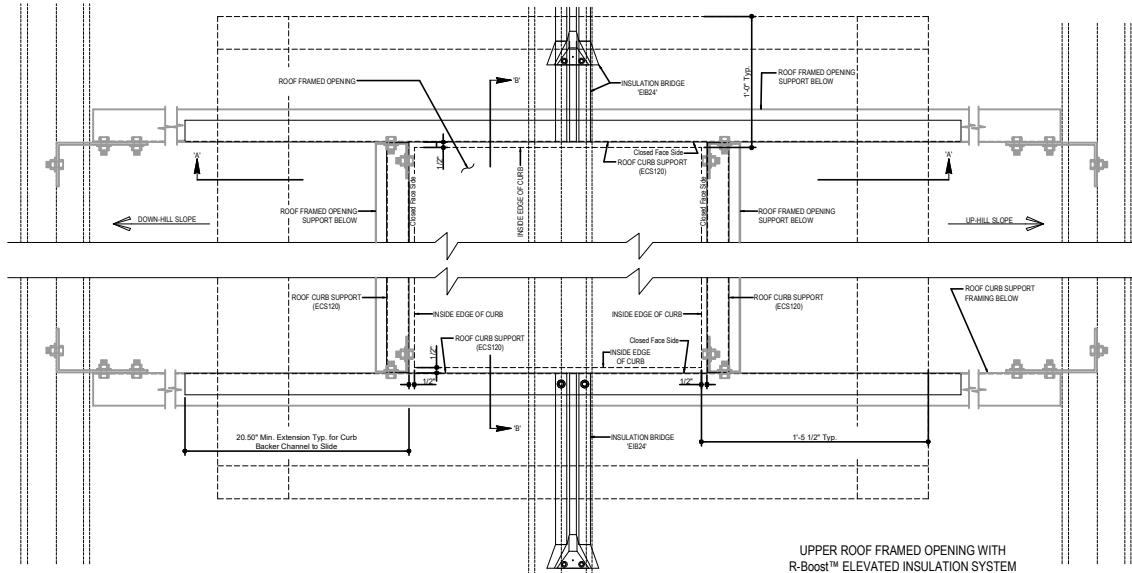
SEC "B"-B' ROOF F.O. INSULATION CLOSURE @ SIDE JAMBS

SINGLE ROOF CURB CONDITION WITH ROOF CURB SUPPORT (ECS120)

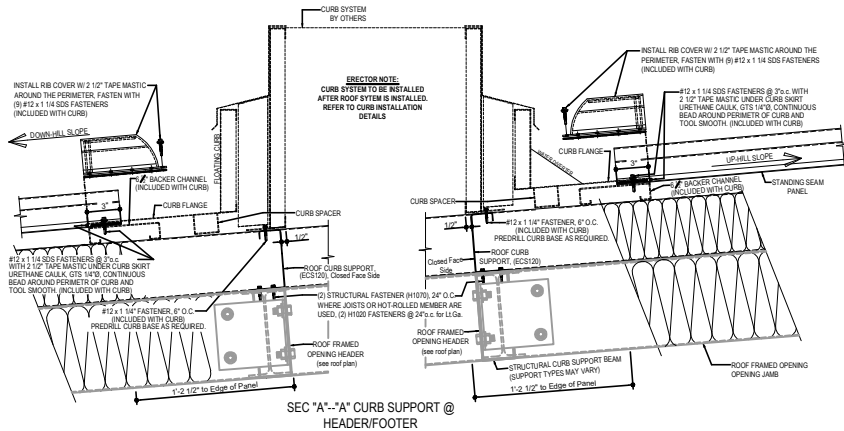
FN2060

FN2080 - DOUBLE ROOF CURB DETAILS FOR RTU > 750#

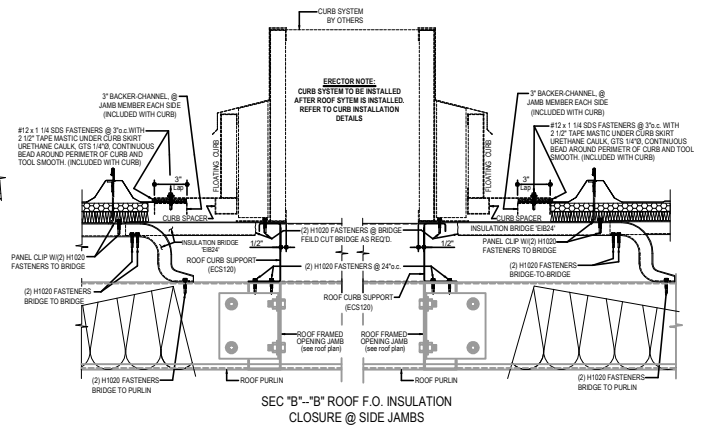
[Download the DWG file by clicking here.](#)



UPPER ROOF FRAMED OPENING WITH R-Boost™ ELEVATED INSULATION SYSTEM



SEC "A"-"A" CURB SUPPORT @ HEADER/FOOTER



SEC "B"-"B" ROOF F.O. INSULATION CLOSURE @ SIDE JAMBS

R-Boost™ DOUBLE CURB CONDITION WITH ROOF CURB SUPPORT ECS120

FN2080