

**ROOF CURB DETAILS**

FN2050 - LIGHTWEIGHT ROOF CURB DETAIL FOR RTU  $\leq$  750#

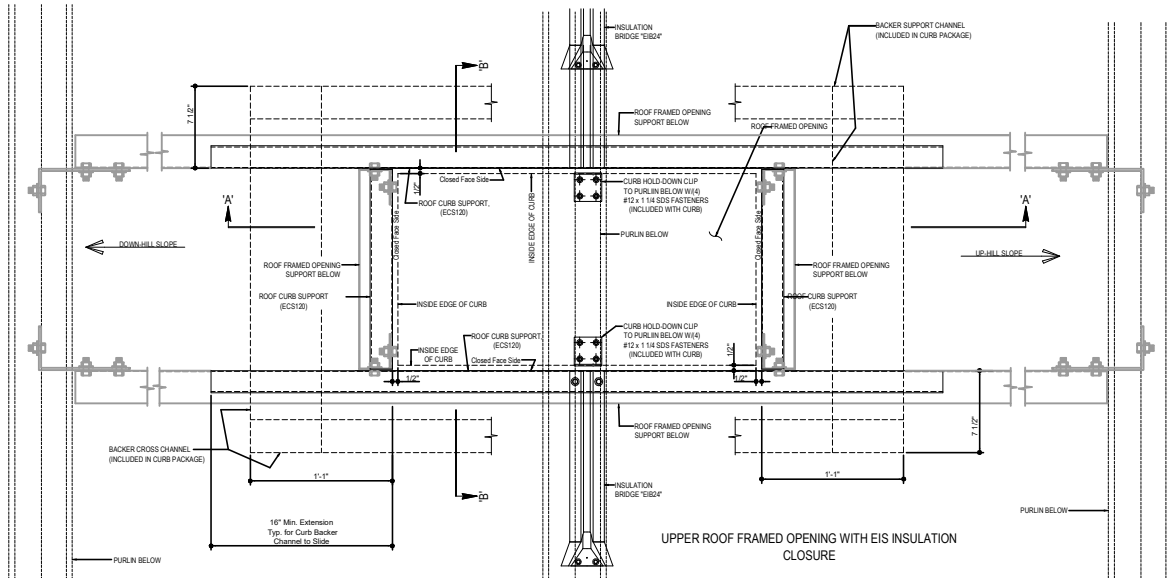
FN2060 - SINGLE ROOF CURB DETAIL FOR RTU  $\leq$  750#

FN2080 - DOUBLE ROOF CURB DETAIL FOR RTU  $\geq$  750#



**FN2060 - SINGLE ROOF CURB DETAILS FOR RTU <= 750#**

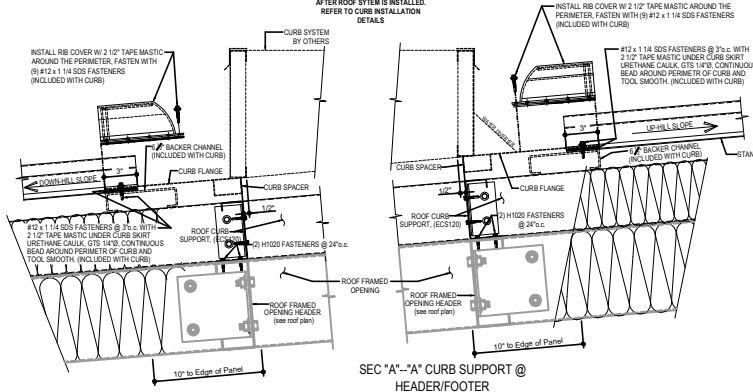
Download the DWG file by clicking [here](#).



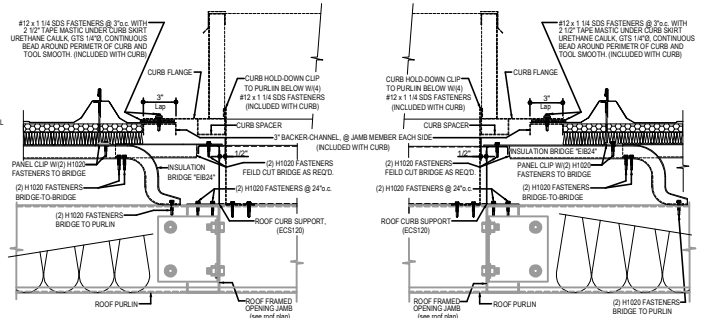
UPPER ROOF FRAMED OPENING WITH EIS INSULATION CLOSURE

**ERECTOR NOTE:**  
CURB SYSTEM TO BE INSTALLED AFTER ROOF SYSTEM IS INSTALLED. REFER TO CURB INSTALLATION DETAILS

**ERECTOR NOTE:**  
CURB SYSTEM TO BE INSTALLED AFTER ROOF SYSTEM IS INSTALLED. REFER TO CURB INSTALLATION DETAILS



SEC "A"-A' CURB SUPPORT @ HEADER/FOOTER



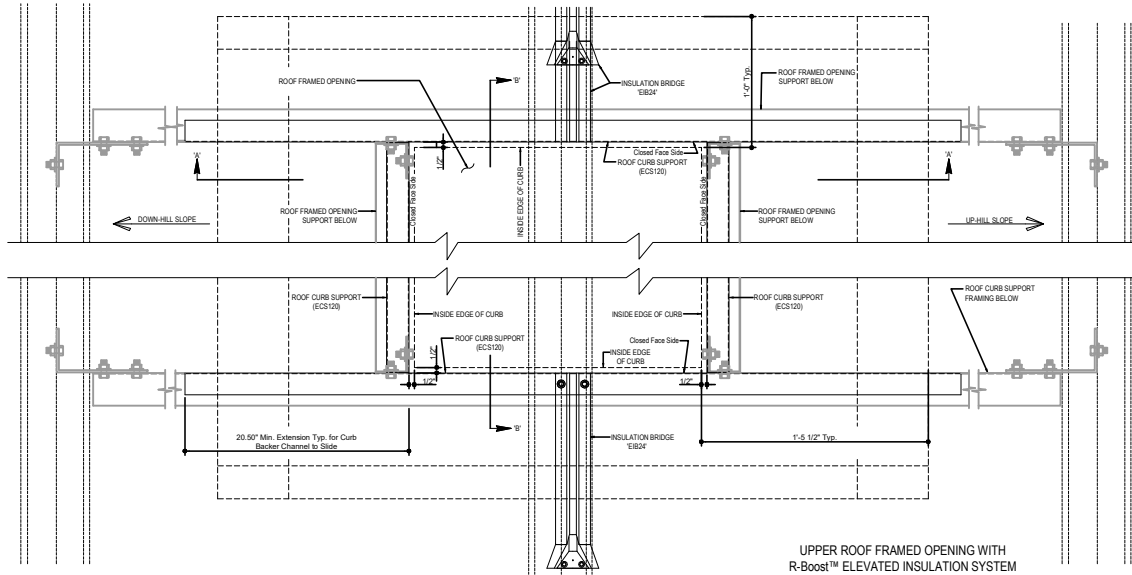
SEC "B"-B' ROOF F.O. INSULATION CLOSURE @ SIDE JAMBS

**SINGLE ROOF CURB CONDITION WITH ROOF CURB SUPPORT ECS120**

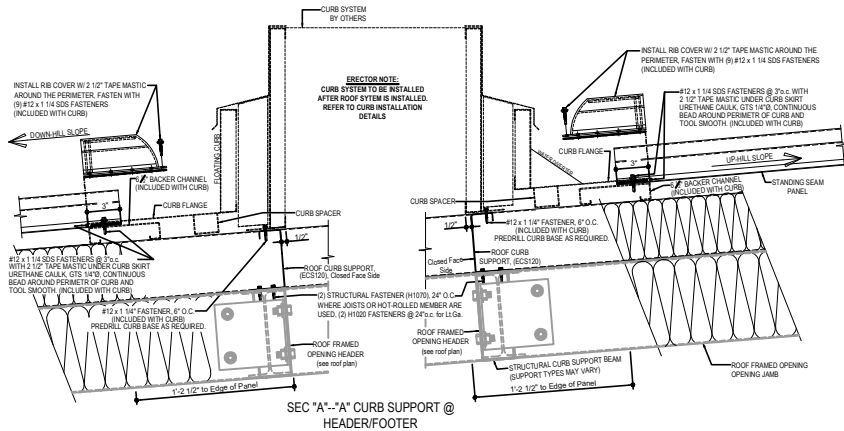
**FN2060**

FN2080 - DOUBLE ROOF CURB DETAILS FOR RTU > 750#

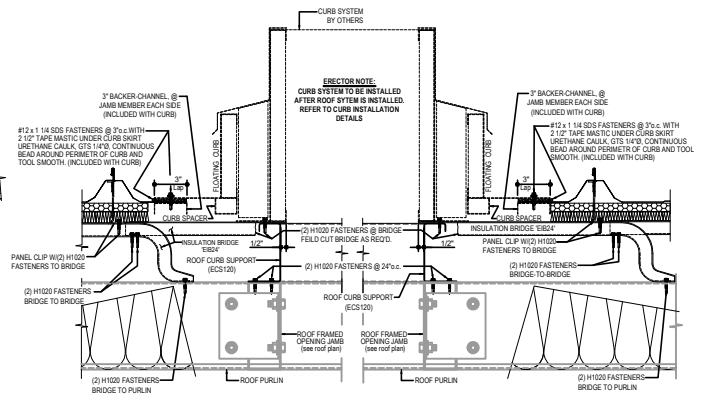
[Download the DWG file by clicking here.](#)



UPPER ROOF FRAMED OPENING WITH R-Boost™ ELEVATED INSULATION SYSTEM



SEC 'A'-'A' CURB SUPPORT @ HEADER/FOOTER



SEC 'B'-'B' ROOF F.O. INSULATION CLOSURE @ SIDE JAMBS

R-Boost™ DOUBLE CURB CONDITION  
WITH ROOF CURB SUPPORT 'ECS120'

FN2080