

BRACE STRUT DETAILS

AK0050 - PIPE OR BOX STRUT AT COLUMN/RAFTER FLANGE

AK0090 - BRACING DETAIL AT STRUT WITH FLANGE CONNECTION

AK0160 - 2-BOLT 6" PIPE OR BOX STRUT AT WEB OF COLUMN/RAFTER (8" MIN. COLUMN/RAFTER)

AK0161 - 2-BOLT 6" PIPE OR BOX STRUT AT WEB OF COLUMN/RAFTER (WITH LINERS AND 11" MIN. COLUMN/RAFTER)

AK0165 - 2-BOLT 6" PIPE OR BOX STRUT AT WEB OF COLUMN/RAFTER (WITH PADDLE BRACE)

AK0166 - 2-BOLT 6" PIPE OR BOX STRUT WITH TIERED PADDLE BRACING (STIFFENER CONNECTION)

AK0167 - 2-BOLT 6" PIPE OR BOX STRUT AT WEB WITH PADDLE BRACE (WITH LINER AT STIFFENER CONNECTION)

AK0170 - 3-BOLT 8" PIPE STRUT AT COLUMN/RAFTER (STIFFENER CONNECTION WITH 10" MIN. COLUMN/RAFTER)

AK0175 - 3-BOLT 6"/8" PIPE STRUT AT WEB OF COLUMN/RAFTER (STIFFENER WITH PADDLE BRACE)

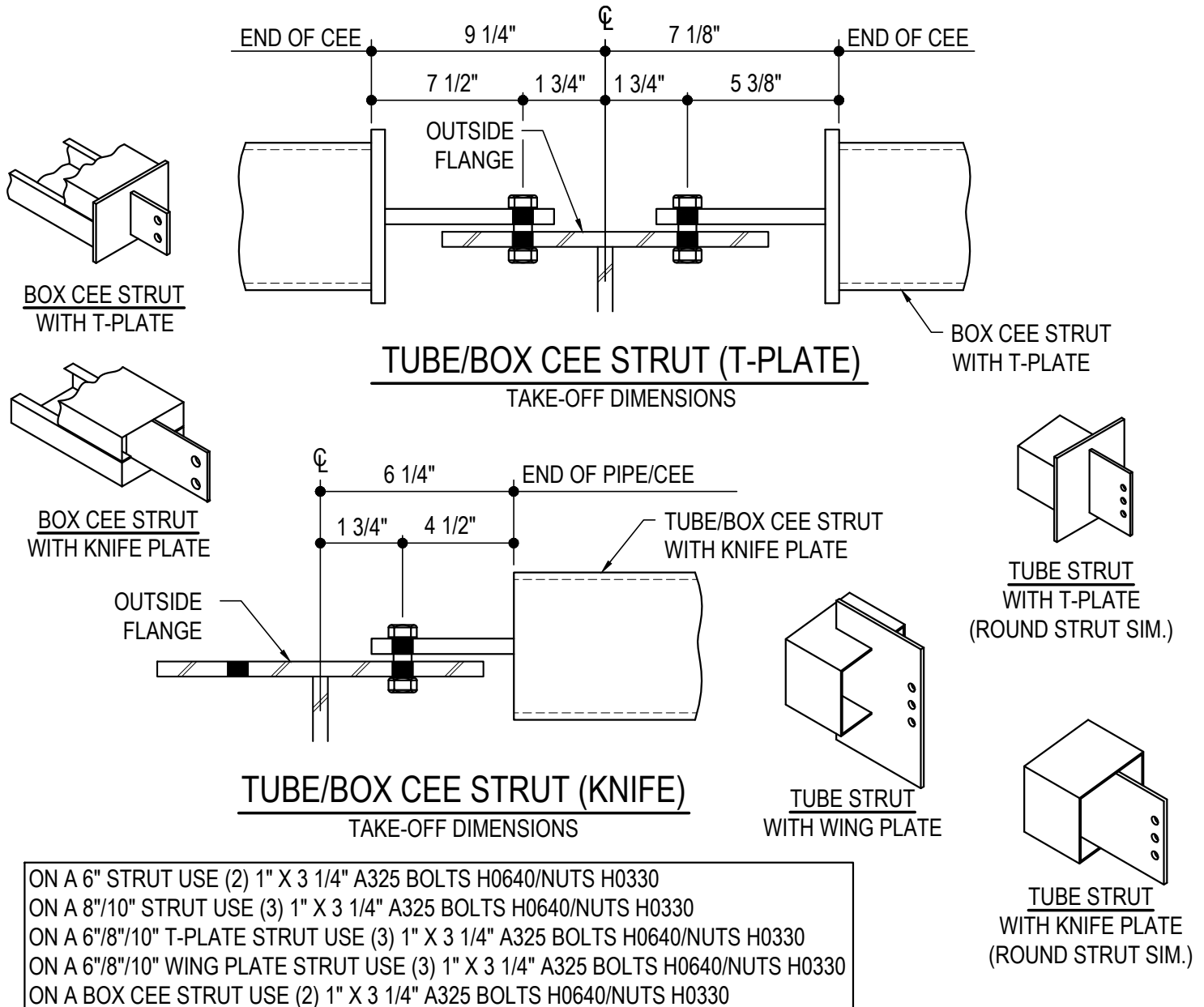
AK0176 - 3-BOLT 6"/8" PIPE STRUT WITH TIERED PADDLE BRACING (STIFFENER CONNECTION)

AK0177 - 2-BOLT STRUT AT 8" ENDWALL (6" PIPE OR BOX CEE STRUT)

AK0300 - STRUT PURLIN DETAIL

AK0050 - TUBE OR BOX STRUT AT COLUMN/RAFTER FLANGE

[Download the DWG file by clicking here.](#)



TUBE OR BOX STRUT AT COLUMN/RAFTER FLANGE

SEE PLANS & ELEVATIONS FOR MARK NUMBERS AND LOCATIONS
REFERENCE ERECTOR NOTE FOR TYPICAL WASHER REQUIREMENTS

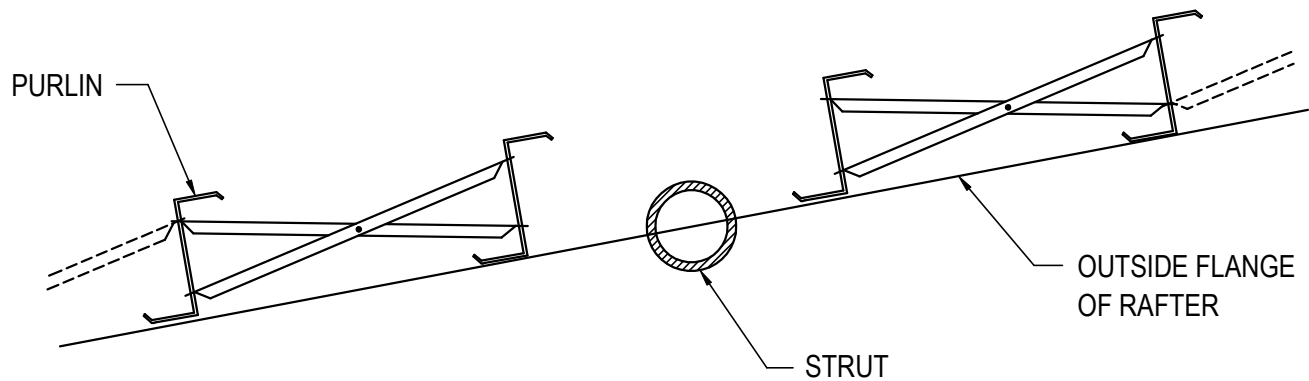
AK0050

Detailer Notes:

- 1) N/A

AK0090 - BRACING DETAIL AT STRUT WITH FLANGE CONNECTION

[Download the DWG file by clicking here.](#)



USE THIS DETAIL WHEN STRUT BOLTS TO RAFTER FLANGE
TO AVOID INTERFERENCE WITH PURLIN BRACING.
(REFERENCE STD. PURLIN BRACE DETAILS)

BRACING DETAIL AT STRUT WITH FLANGE CONNECTION

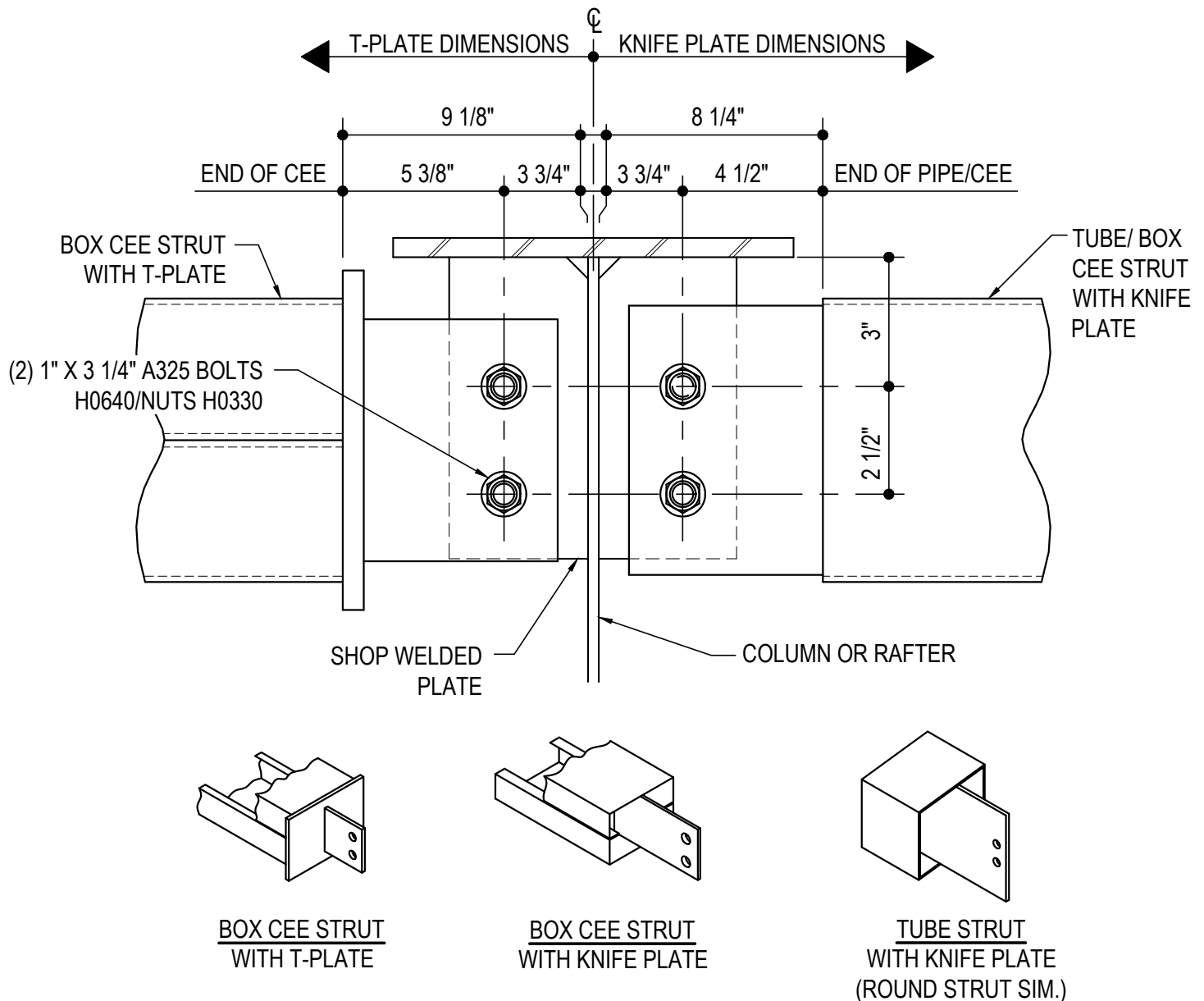
AK0090

Detailer Notes:

1) N/A

AK0160 - 2-BOLT 6" TUBE OR BOX STRUT AT WEB OF COLUMN/RAFTER (8" MIN. COLUMN/RAFTER)

[Download the DWG file by clicking here.](#)



2-BOLT 6" TUBE OR BOX STRUT AT WEB OF COLUMN/RAFTER

8" MIN. COLUMN/RAFTER
SEE PLANS & ELEVATIONS FOR MARK NUMBERS AND LOCATIONS

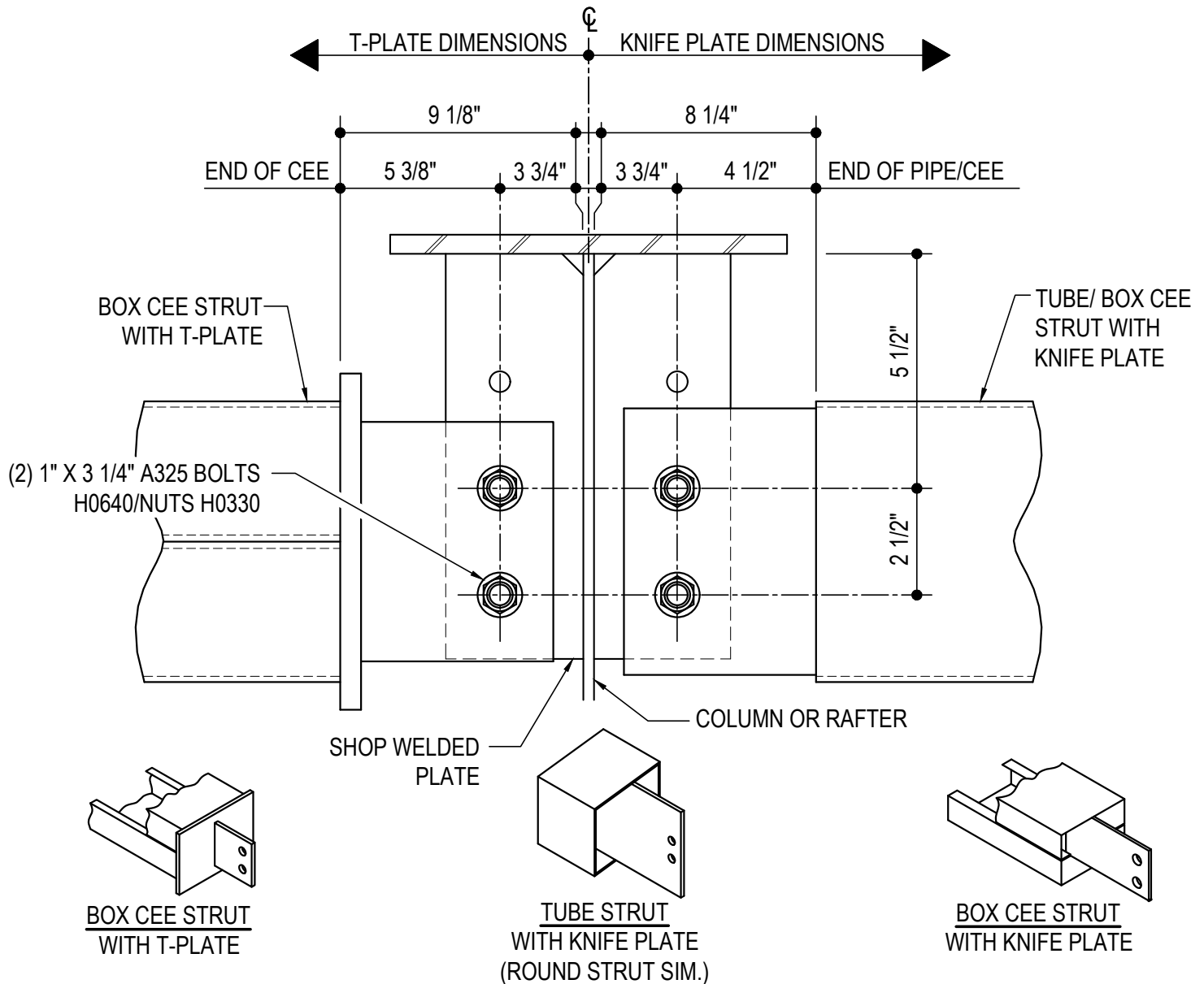
AK0160

Detailer Notes:

- 1) FOR PSC STANDARD PART MARKS AND THEIR LOCATIONS, SEE THE FABRICATED PARTS MANUAL AND THE DETAILING PROCEDURES MANUAL

AK0161 - 2-BOLT 6" TUBE OR BOX STRUT AT WEB OF COLUMN/RAFTER (WITH LINERS AND 11" MIN. COLUMN/RAFTER)

[Download the DWG file by clicking here.](#)



2-BOLT 6" TUBE OR BOX STRUT AT WEB OF COLUMN/RAFTER

WITH LINERS AND 11" MIN. COLUMN/RAFTER

SEE PLANS & ELEVATIONS FOR MARK NUMBERS AND LOCATIONS

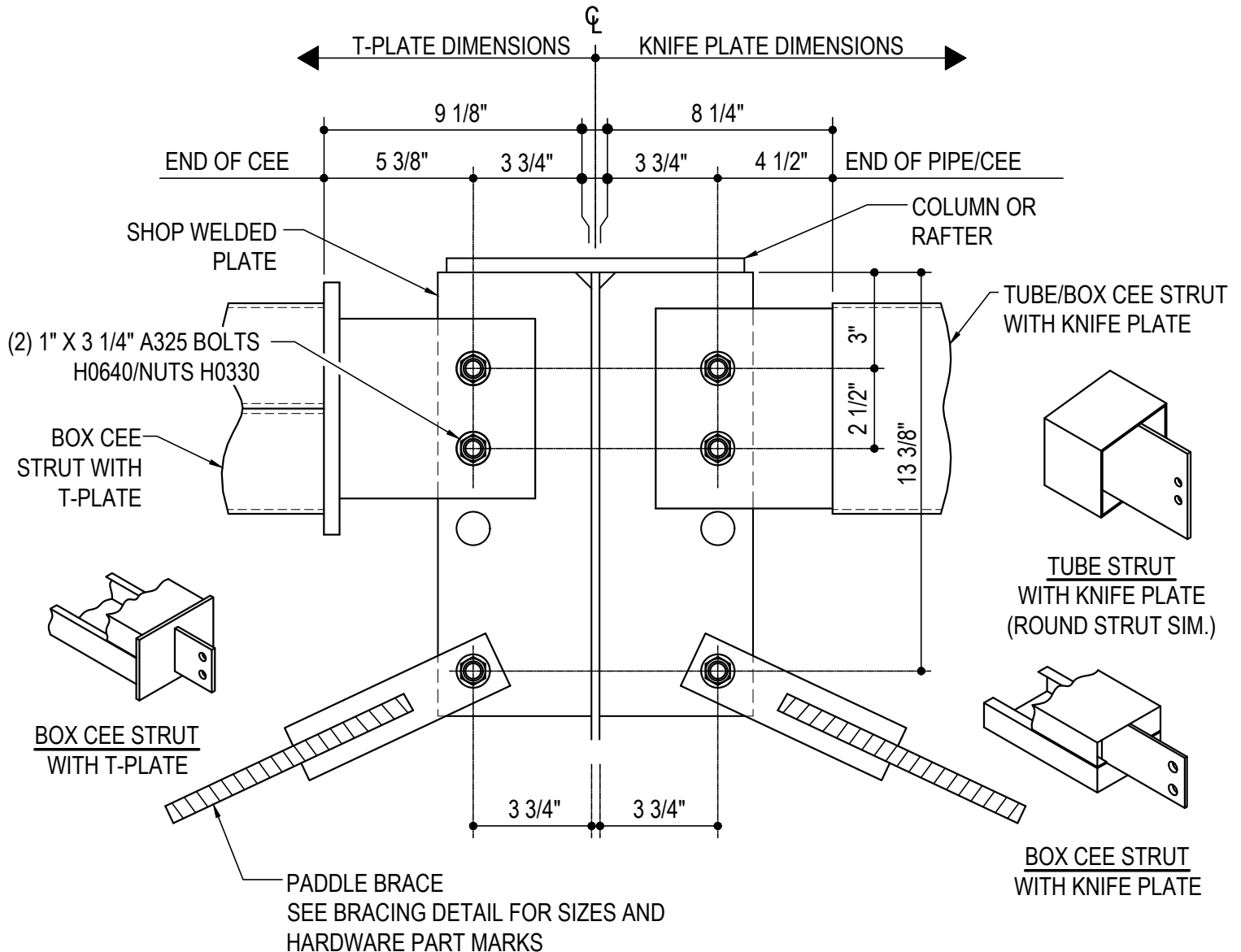
AK0161

Detailer Notes:

- 1) FOR PSC STANDARD PART MARKS AND THEIR LOCATIONS, SEE THE FABRICATED PARTS MANUAL AND THE DETAILING PROCEDURES MANUAL.
- 2) USE THIS DETAIL WHEN WALL AND/OR ROOF LINER INTERFERES WITH STRUT
- 3) USE THIS DETAIL WHEN BUILDING HAS FLUSH GIRTS WITH ROOF SLOPE GREATER THAN OR EQUAL TO 4:12

AK0165 - 2-BOLT 6" TUBE OR BOX STRUT AT WEB OF COLUMN/RAFTER (WITH PADDLE BRACE)

[Download the DWG file by clicking here.](#)



2-BOLT 6" TUBE OR BOX STRUT AT WEB OF COLUMN/RAFTER

WITH PADDLE BRACE

SEE PLANS & ELEVATIONS FOR MARK NUMBERS AND LOCATIONS

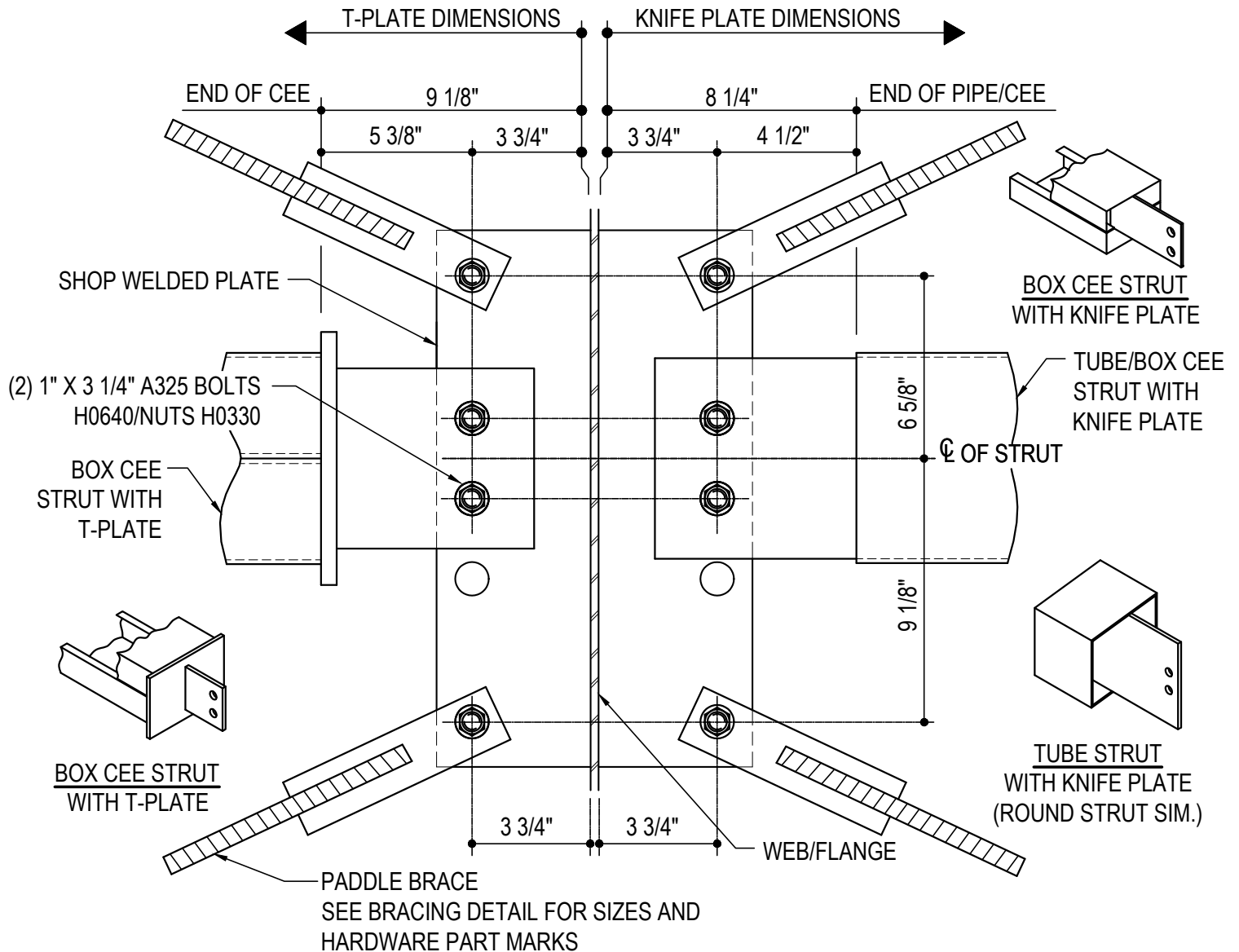
AK0165

Detailer Notes:

- 1) FOR PSC STANDARD PART MARKS AND THEIR LOCATIONS, SEE THE FABRICATED PARTS MANUAL AND THE DETAILING PROCEDURES MANUAL

AK0166 - 2-BOLT 6" TUBE OR BOX STRUT WITH TIERED PADDLE BRACING (STIFFENER CONNECTION)

[Download the DWG file by clicking here.](#)



2-BOLT 6" TUBE OR BOX STRUT WITH TIERED PADDLE BRACING

STIFFENER CONNECTION

SEE PLANS & ELEVATIONS FOR MARK NUMBERS AND LOCATIONS

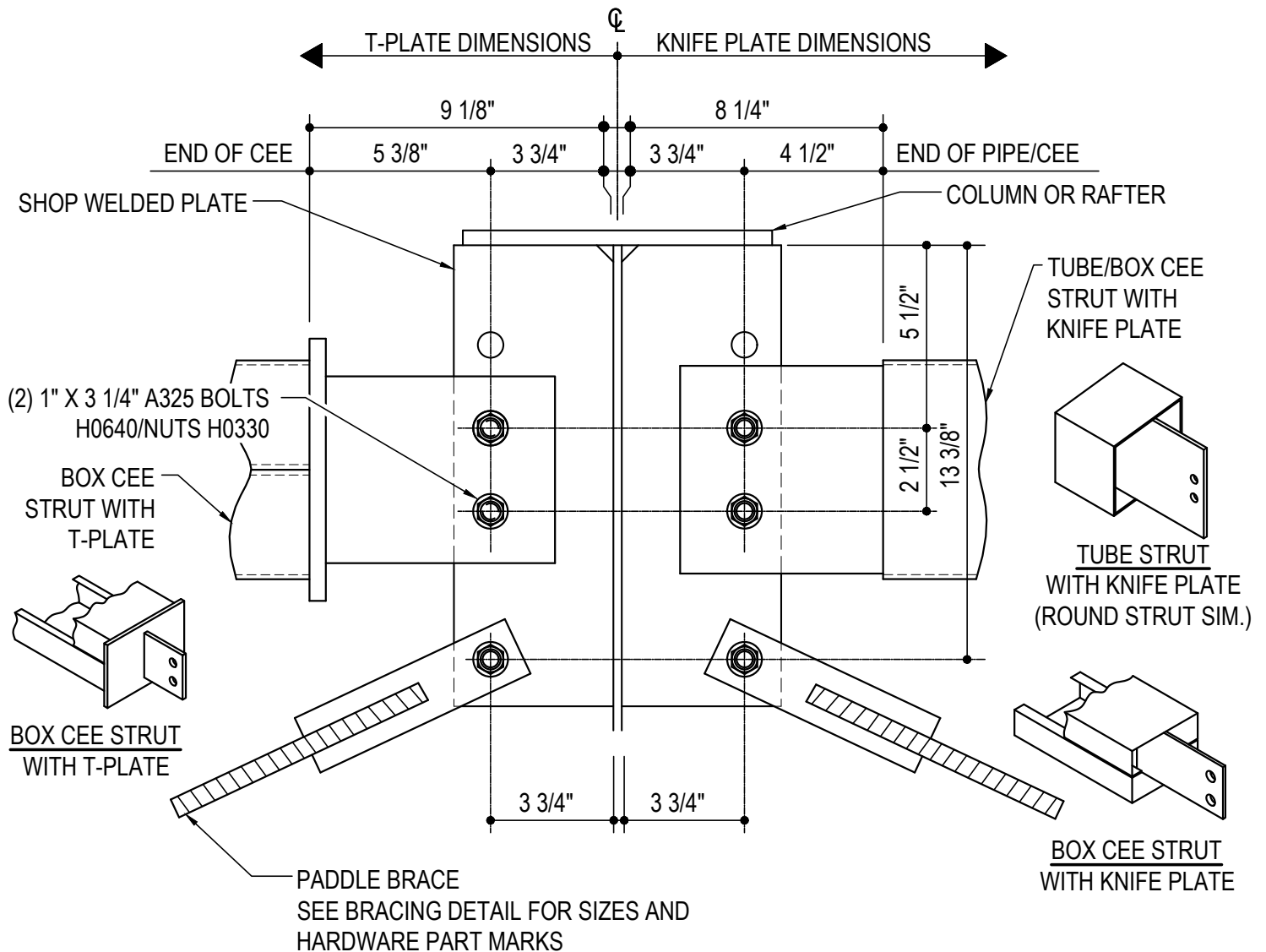
AK0166

Detailer Notes:

- 1) FOR PSC STANDARD PART MARKS AND THEIR LOCATIONS, SEE THE FABRICATED PARTS MANUAL AND THE DETAILING PROCEDURES MANUAL

AK0167 - 2-BOLT 6" TUBE OR BOX STRUT AT WEB WITH PADDLE BRACE (WITH LINER AT STIFFENER CONNECTION)

[Download the DWG file by clicking here.](#)



2-BOLT 6" TUBE OR BOX STRUT AT WEB WITH PADDLE BRACE

WITH LINER AT STIFFENER CONNECTION
SEE PLANS & ELEVATIONS FOR MARK NUMBERS AND LOCATIONS

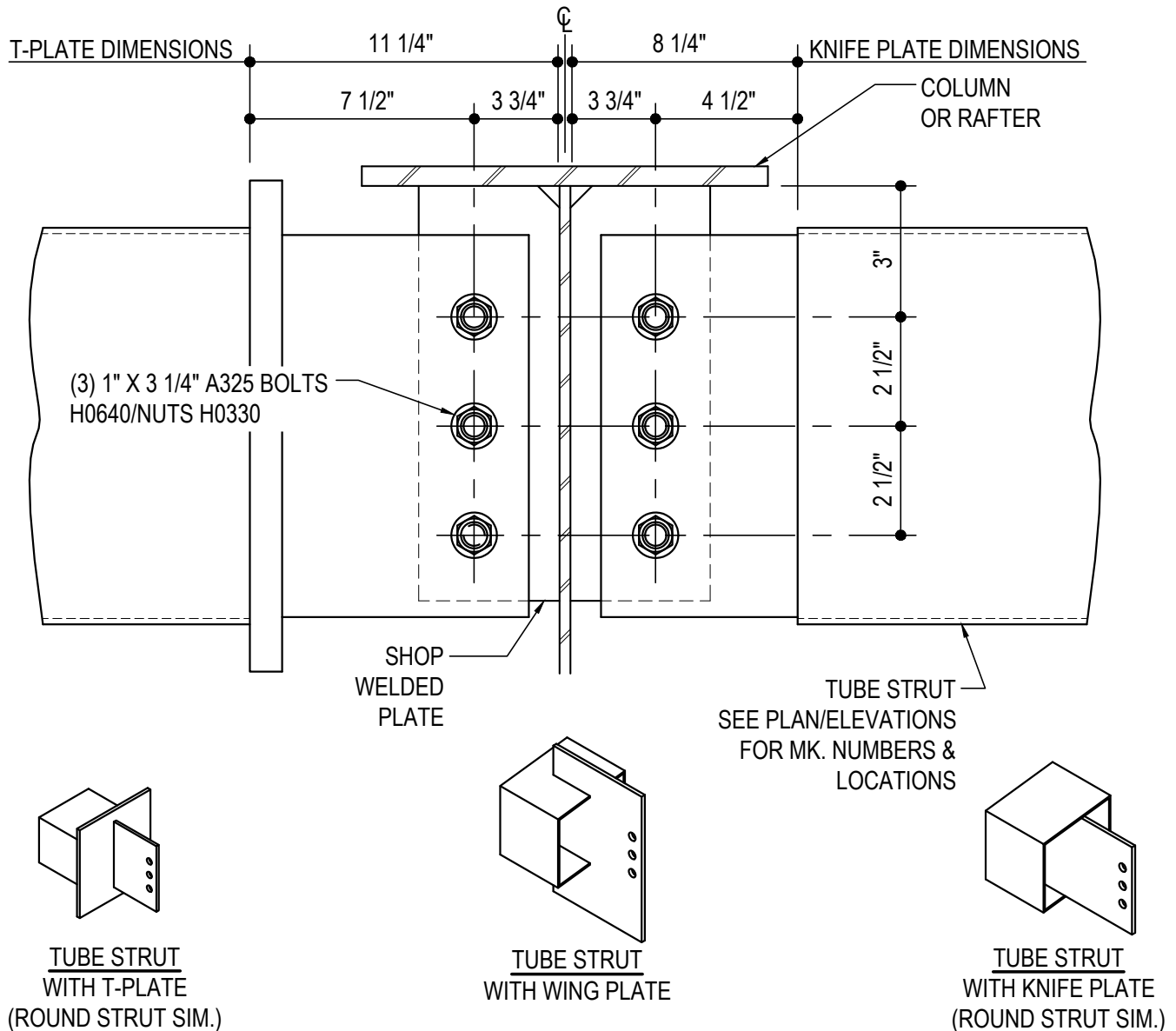
AK0167

Detailer Notes:

- 1) FOR PSC STANDARD PART MARKS AND THEIR LOCATIONS, SEE THE FABRICATED PARTS MANUAL AND THE DETAILING PROCEDURES MANUAL.
- 2) USE THIS DETAIL WHEN WALL AND/OR ROOF LINER INTERFERES WITH STRUT
- 3) USE THIS DETAIL WHEN BUILDING HAS FLUSH GIRTS WITH ROOF SLOPE GREATER THAN OR EQUAL TO 4:12

AK0170 - 3-BOLT 8" OR 10" TUBE STRUT AT COL/RAF (STIFFENER CONNECTION WITH 10" MIN. COL/RAF)

[Download the DWG file by clicking here.](#)



3-BOLT 8"/10" TUBE STRUT AT COLUMN/RAFTER

STIFFENER CONNECTION WITH 10" MIN. COLUMN/RAFTER
SEE PLANS & ELEVATIONS FOR MARK NUMBERS AND LOCATIONS

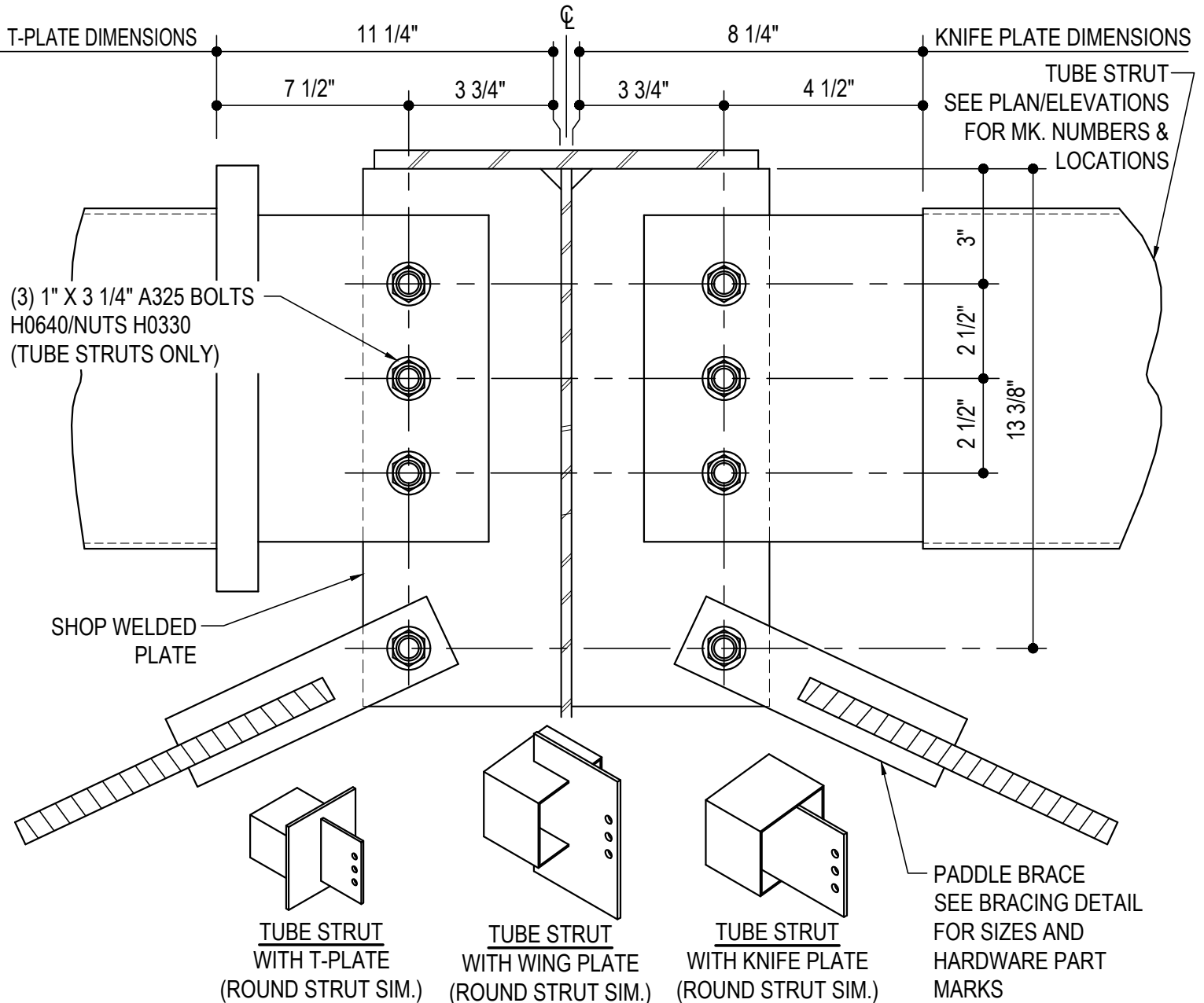
AK0170

Detailer Notes:

- 1) FOR PSC STANDARD PART MARKS AND THEIR LOCATIONS, SEE THE FABRICATED PARTS MANUAL AND THE DETAILING PROCEDURES MANUAL

AK0175 - 3-BOLT 6"/8"/10" TUBE STRUT AT WEB OF COLUMN/RAFTER (STIFFENER WITH PADDLE BRACE)

[Download the DWG file by clicking here.](#)



3-BOLT 6"/8"/10" TUBE STRUT AT WEB OF COLUMN/RAFTER

STIFFENER CONNECTION WITH PADDLE BRACE
SEE PLANS & ELEVATIONS FOR MARK NUMBERS AND LOCATIONS

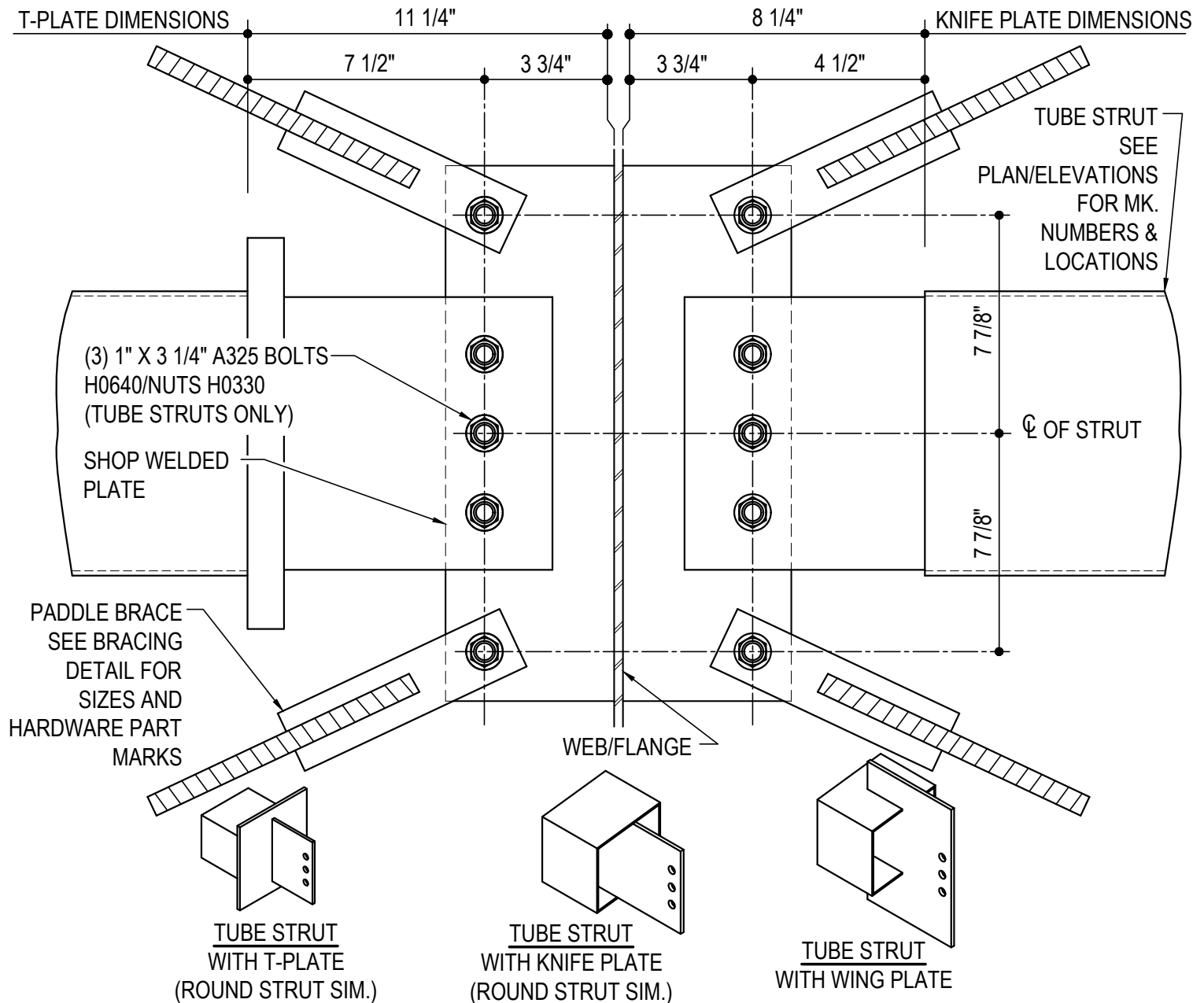
AK0175

Detailer Notes:

- 1) FOR PSC STANDARD PART MARKS AND THEIR LOCATIONS, SEE THE FABRICATED PARTS MANUAL AND THE DETAILING PROCEDURES MANUAL

AK0176 - 3-BOLT 6"/8"/10" TUBE STRUT WITH TIERED PADDLE BRACING (STIFFENER CONNECTION)

[Download the DWG file by clicking here.](#)



3-BOLT 6"/8"/10" TUBE STRUT WITH TIERED PADDLE BRACING

STIFFENER CONNECTION

SEE PLANS & ELEVATIONS FOR MARK NUMBERS AND LOCATIONS

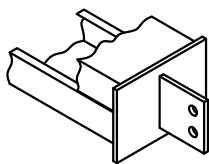
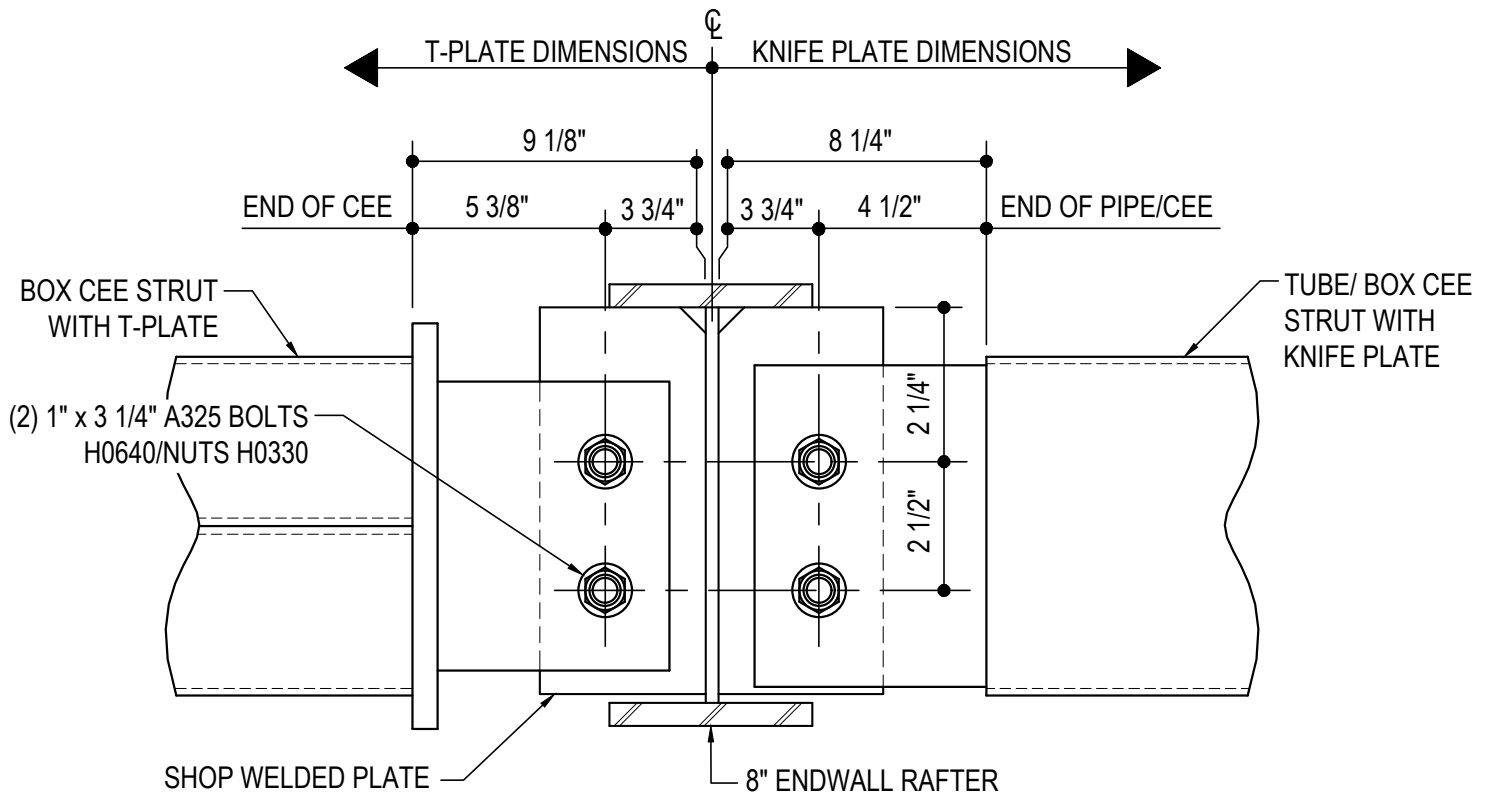
AK0176

Detailer Notes:

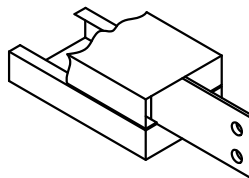
- 1) FOR PSC STANDARD PART MARKS AND THEIR LOCATIONS, SEE THE FABRICATED PARTS MANUAL AND THE DETAILING PROCEDURES MANUAL

AK0177 - 2-BOLT STRUT AT 8" ENDWALL (6" TUBE OR BOX CEE STRUT)

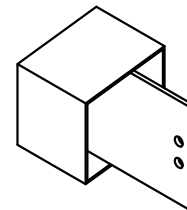
[Download the DWG file by clicking here.](#)



**BOX CEE STRUT
WITH T-PLATE**



**BOX CEE STRUT
WITH KNIFE PLATE**



**TUBE STRUT
WITH KNIFE PLATE
(ROUND STRUT SIM.)**

2-BOLT STRUT AT 8" ENDWALL (6" TUBE OR BOX CEE STRUT)

SEE PLANS & ELEVATIONS FOR MARK NUMBERS AND LOCATIONS
REFERENCE ERECTOR NOTE FOR TYPICAL WASHER REQUIREMENTS

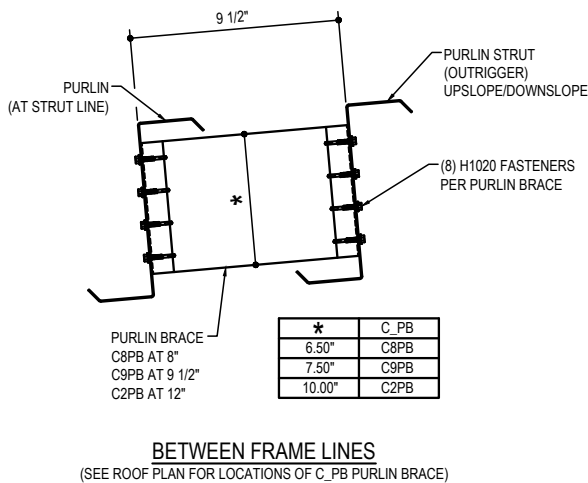
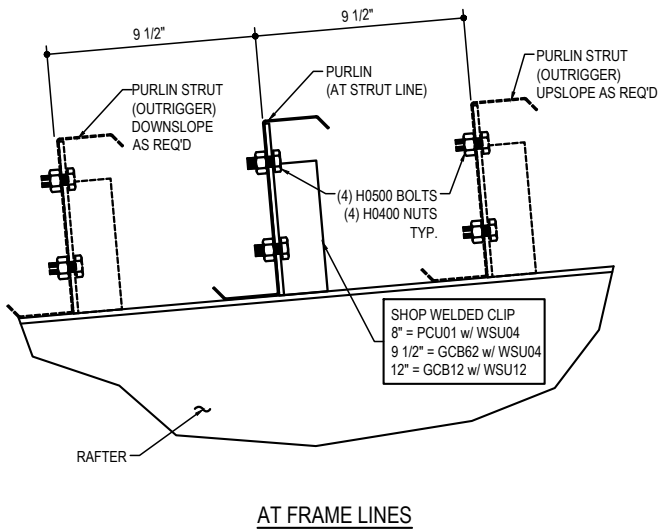
AK0177

Detailer Notes:

- 1) FOR PSC STANDARD PART MARKS AND THEIR LOCATIONS, SEE THE FABRICATED PARTS MANUAL AND THE DETAILING PROCEDURES MANUAL

AK0300 - STRUT PURLIN DETAIL

[Download the DWG file by clicking here.](#)



STRUT PURLIN DETAIL
SEE PLANS & ELEVATIONS FOR MARK NUMBERS AND LOCATIONS
REFERENCE ERECTOR NOTE FOR TYPICAL WASHER REQUIREMENTS

AK0300

Detailer Notes:
1) N/A