

GENERAL

- B00010 - PURLIN SUPPORT METHODS

B00020 - JOIST SUPPORT METHODS

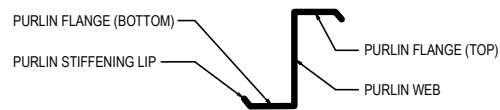
B00010 - PURLIN SUPPORT METHODS

[Download the DWG file by clicking here.](#)

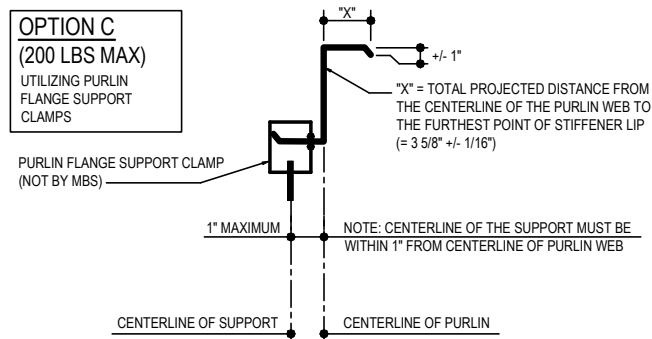
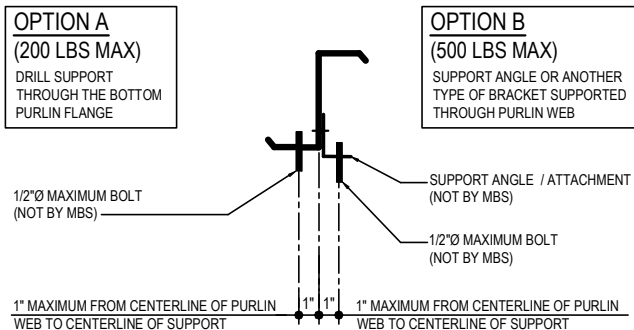
COLLATERAL DEAD LOADS, UNLESS NOTED OTHERWISE, ARE ASSUMED TO BE UNIFORMLY DISTRIBUTED. WHEN SUSPENDED SPRINKLER SYSTEMS, LIGHTING, HVAC EQUIPMENT, CEILINGS, ETC. ARE SUSPENDED FROM ROOF MEMBERS, CONSULT M.B.S. ENGINEERING IF THESE CONCENTRATED LOADS EXCEED 500 POUNDS (USING THE WEB MOUNT DETAIL) OR 200 POUNDS (USING THE FLANGE MOUNT DETAIL) OR IF INDIVIDUAL MEMBERS ARE LOADED SIGNIFICANTLY MORE THAN OTHERS.

GENERAL RESTRICTION

UNDER NO CIRCUMSTANCES CAN THE PURLIN STIFFENING LIP BE FIELD MODIFIED FROM THE FACTORY SUPPLIED CONDITION. ALSO DO NOT HANG ANYTHING FROM PURLIN STIFFENING LIP.



SUPPORT ATTACHMENT OPTIONS



PURLIN SUPPORT METHODS

B00010

Detailer Notes:

- 1) THIS DETAIL SHOULD NOT BE USED WHEN THE COLLATERAL LOAD IS "0", ONLY USE WHEN COLLATERAL LOAD IS GREATER THAN "0".

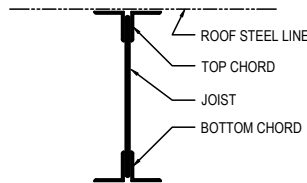
B00020 - JOIST SUPPORT METHODS

[Download the DWG file by clicking here.](#)

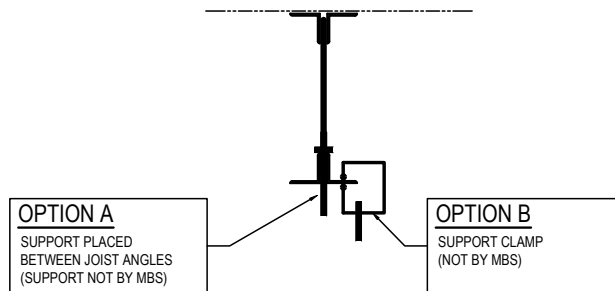
COLLATERAL DEAD LOADS, UNLESS NOTED OTHERWISE, ARE ASSUMED TO BE UNIFORMLY DISTRIBUTED. WHEN SUSPENDED SPRINKLER SYSTEMS, LIGHTING, HVAC EQUIPMENT, CEILINGS, ETC. ARE SUSPENDED FROM ROOF MEMBERS, CONSULT M.B.S. ENGINEERING IF THESE CONCENTRATED LOADS EXCEED 200 POUNDS OR IF INDIVIDUAL MEMBERS ARE LOADED SIGNIFICANTLY MORE THAN OTHERS.

GENERAL RESTRICTION

1. UNDER NO CIRCUMSTANCES CAN THE JOIST BE FIELD MODIFIED FROM THE FACTORY SUPPLIED CONDITION.
2. ANY APPROVED SUPPORT METHOD USED MUST NOT BE ATTACHED TO THE TOP CHORD OF THE JOIST, TO PREVENT PROTRUSION ABOVE THE ROOF STEEL LINE AND INTO THE ROOF PLANE.



SUPPORT ATTACHMENT OPTIONS



ERECTOR NOTE:

ADDITIONAL JOIST REINFORCING MAY BE REQUIRED. CHECK THE ERECTION DRAWINGS FOR SPECIFIC REQUIREMENTS.

JOIST SUPPORT METHODS

B00020

Detailer Notes:

- 1) N/A