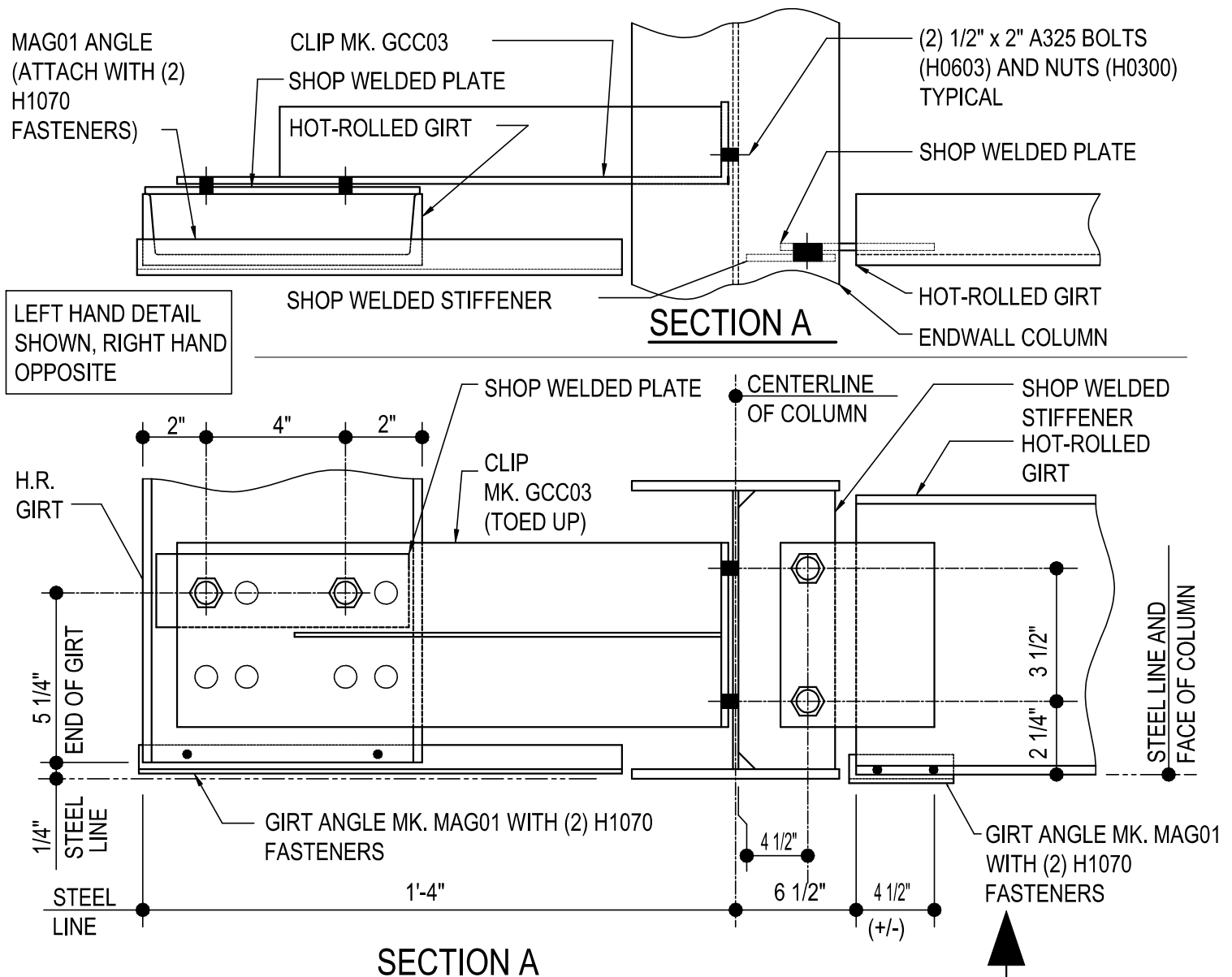


FLUSH CORNER GIRT CONDITIONS

- CD0015 - FLUSH CORNER 8" H.R. GIRT DETAIL
 - CD0090 - FLUSH GIRT TERMINATION DETAIL
 - CD0095 - FLUSH BOLTED GIRT TERMINATION DETAIL
 - CD0115 - H.R. GIRT TERMINATION DETAIL
 - CD0116 - HOT-ROLLED GIRT TERMINATION @ C.F. COL.
 - CD0125 - HOT ROLLED GIRT TERMINATION DETAIL
 - CD1010 - FLUSH CORNER WELDED DETAIL
 - CD1015 - FLUSH BOLTED CORNER GIRT DETAIL
 - CD1020 - FLUSH CORNER COLUMN GIRT DETAIL
 - CD1030 - FLUSH TO FLUSH CORNER DETAIL
 - CD1040 - FLUSH GIRT TERMINATION TO STEEL LINE
-

CD0015 - FLUSH CORNER 8" H.R. GIRT DETAIL

[Download the DWG file by clicking here.](#)



HOT-ROLLED GIRT CORNER DETAIL

8" HOT-ROLLED GIRT AT FLUSH CORNER.

NOTE: USE (6) 1/2" x 2" A325 BOLTS (MK. H0603) & NUTS (MK. H0300)
REFERENCE ERECTOR NOTE FOR TYPICAL WASHER REQUIREMENTS

CD0015

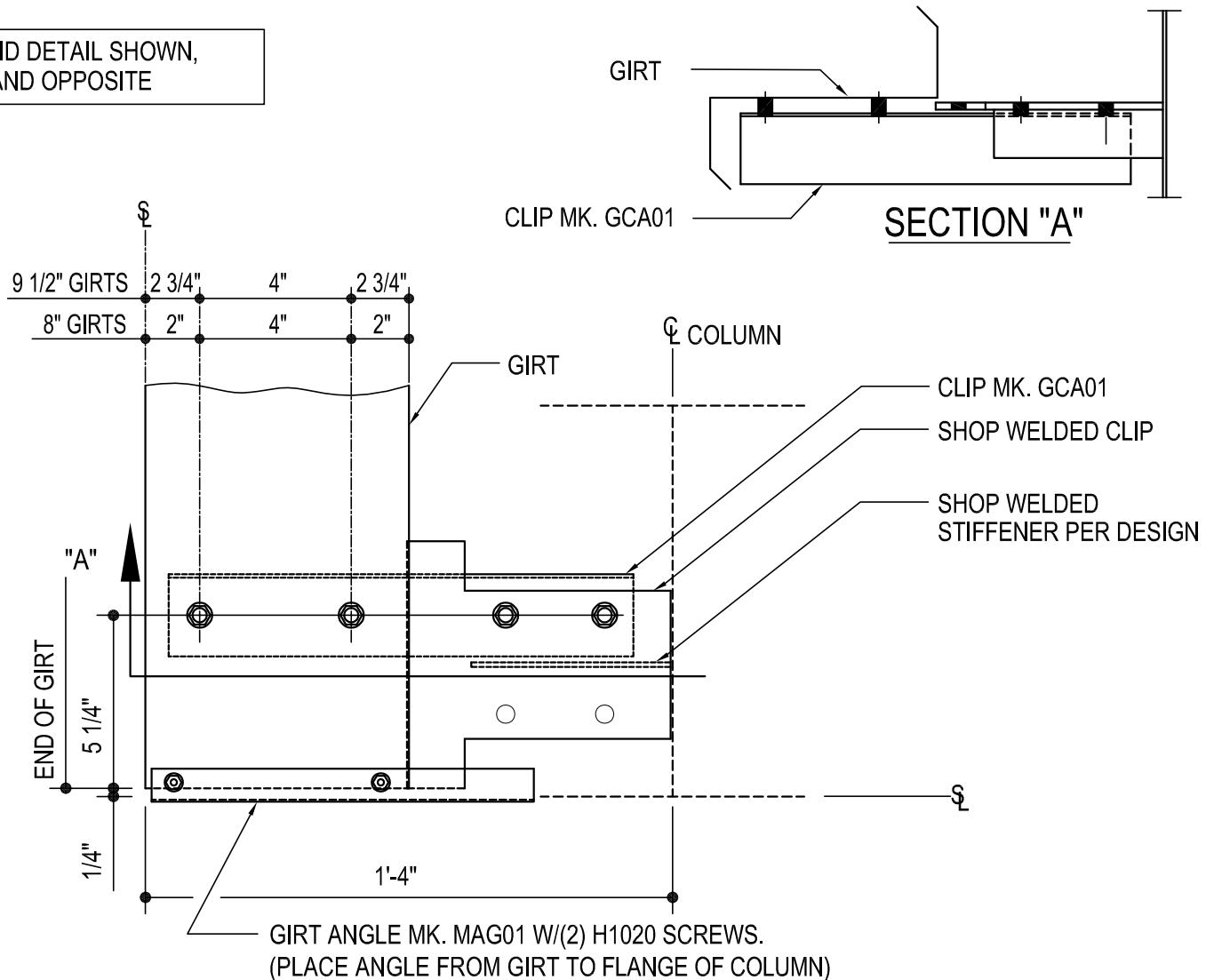
Detailer Notes:

- 1) DETAIL FOR HOT ROLLED & BUILT-UP COLUMN ONLY
- 2) CLIP TO HR GIRT & STIFFENER: GCP06
- 3) STIFFENER TO COLUMN: STFBR
- 4) CLIP TO HR GIRT: HCS08

CD0090 - FLUSH GIRT TERMINATION DETAIL

[Download the DWG file by clicking here.](#)

LEFT HAND DETAIL SHOWN,
RIGHT HAND OPPOSITE



FLUSH GIRT TERMINATION DETAIL

CORNER FLUSH GIRT DETAIL WITH WELDED CLIPS

NOTE: USE (4) 1/2" X 1 1/4" A307 BOLTS H0500/NUTS H0400

REFERENCE WASHER DETAIL FOR TYPICAL WASHER REQUIREMENTS

CD0090

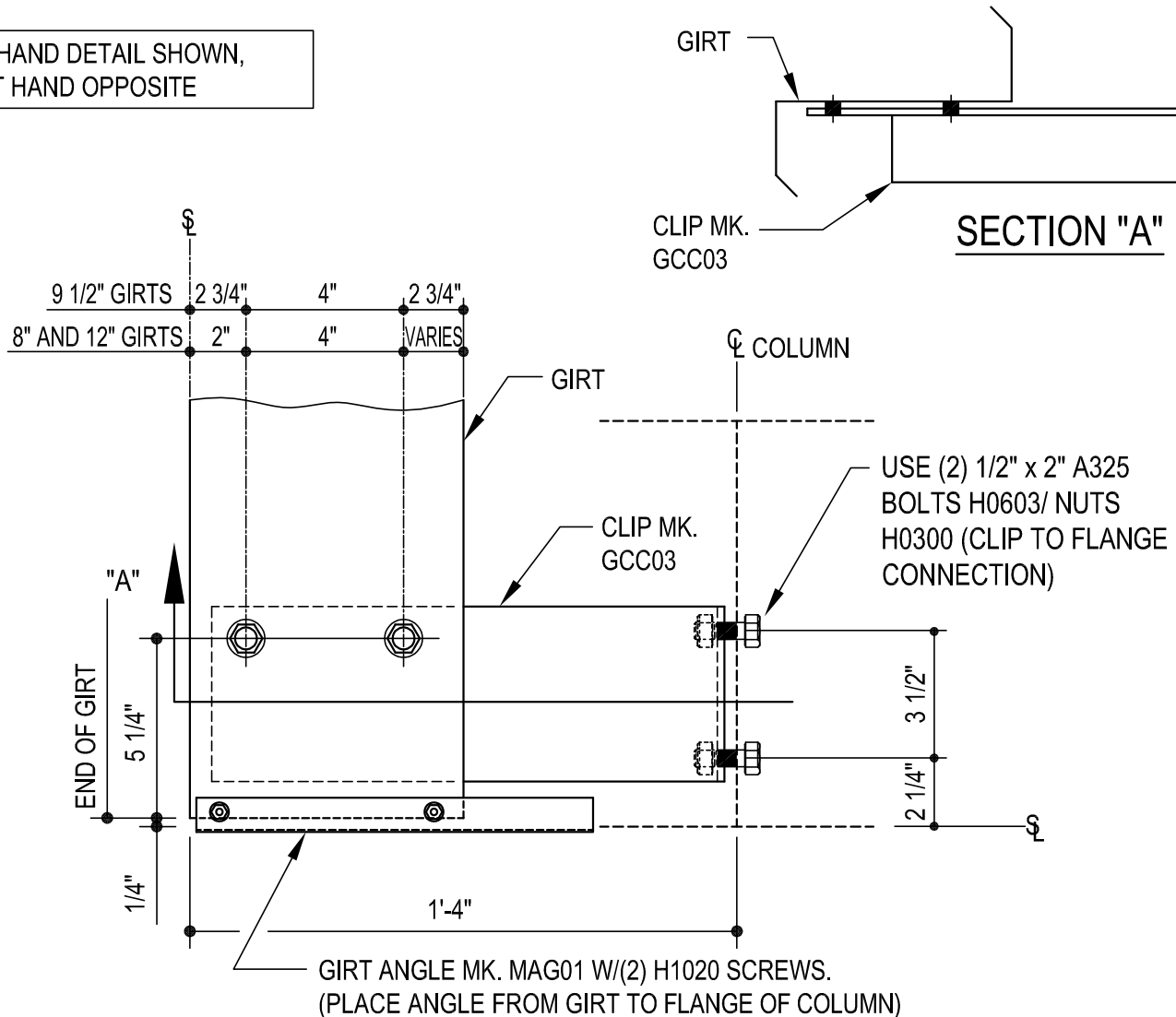
Detailer Notes:

- 1) WELDED CLIP TO COLUMN: GFI02
- 2) ADD STIFFENER PER DESIGN: WS_04
- 3) USE BOLTED ALTERNATE DETAIL FOR 12" GIRTS

CD0095 - FLUSH BOLTED GIRT TERMINATION DETAIL

[Download the DWG file by clicking here.](#)

LEFT HAND DETAIL SHOWN,
RIGHT HAND OPPOSITE



FLUSH BOLTED GIRT TERMINATION DETAIL

FLUSH CORNER GIRT DETAIL WITH BOLTED CLIP

NOTE: USE (4) 1/2" X 1 1/4" A307 BOLTS H0500/NUTS H0400

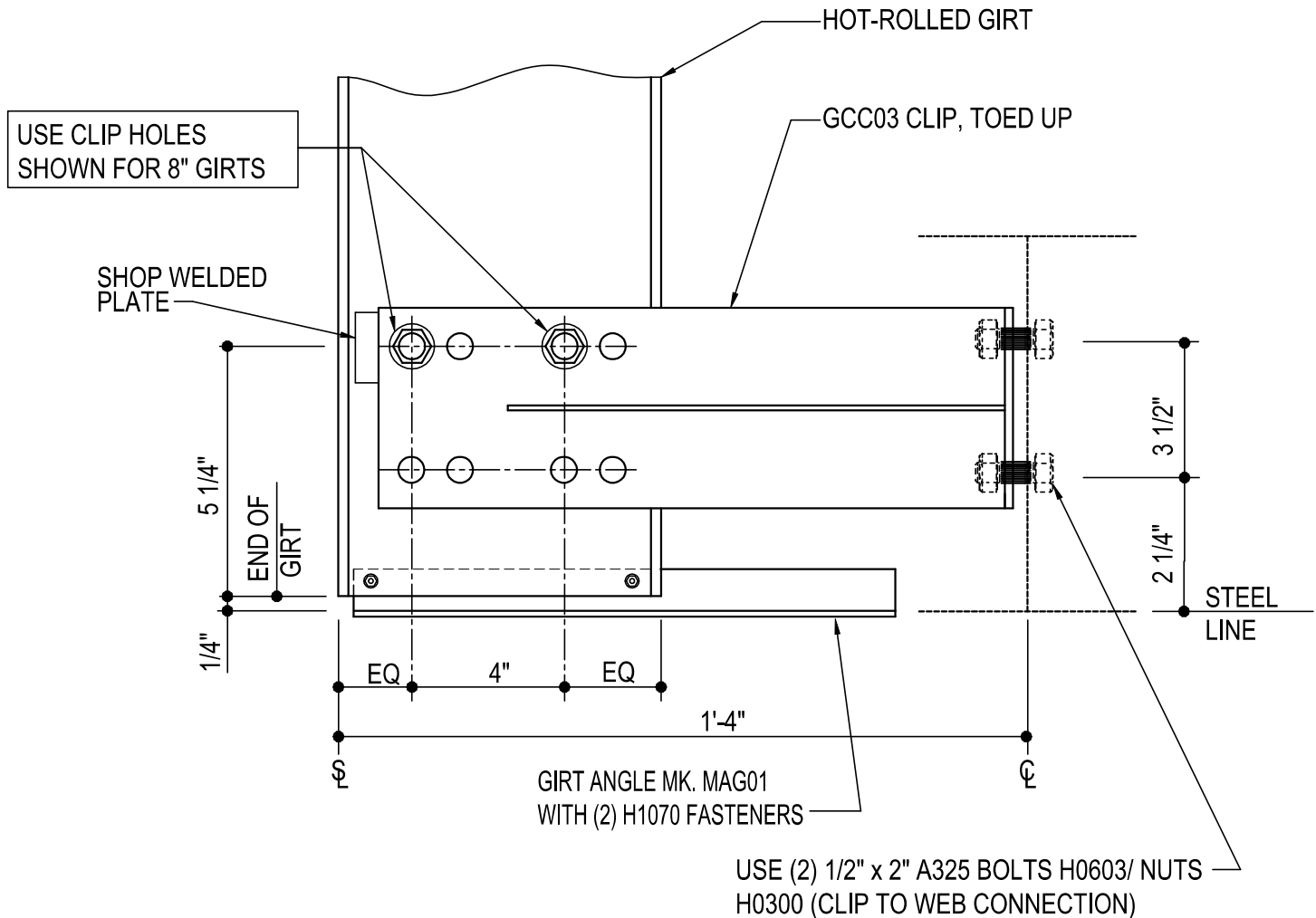
REFERENCE WASHER DETAIL FOR TYPICAL WASHER REQUIREMENTS

CD0095

Detailer Notes:

CD0115 - H.R. GIRT TERMINATION DETAIL

[Download the DWG file by clicking here.](#)



HOT-ROLLED GIRT TERMINATION DETAIL

LEFT HAND DETAIL SHOWN, RIGHT HAND OPPOSITE

NOTE: USE (2) 1/2" x 2" A325 BOLTS (H0603) & NUTS (H0300)

REFERENCE ERECTOR NOTE FOR TYPICAL WASHER REQUIREMENTS

CD0115

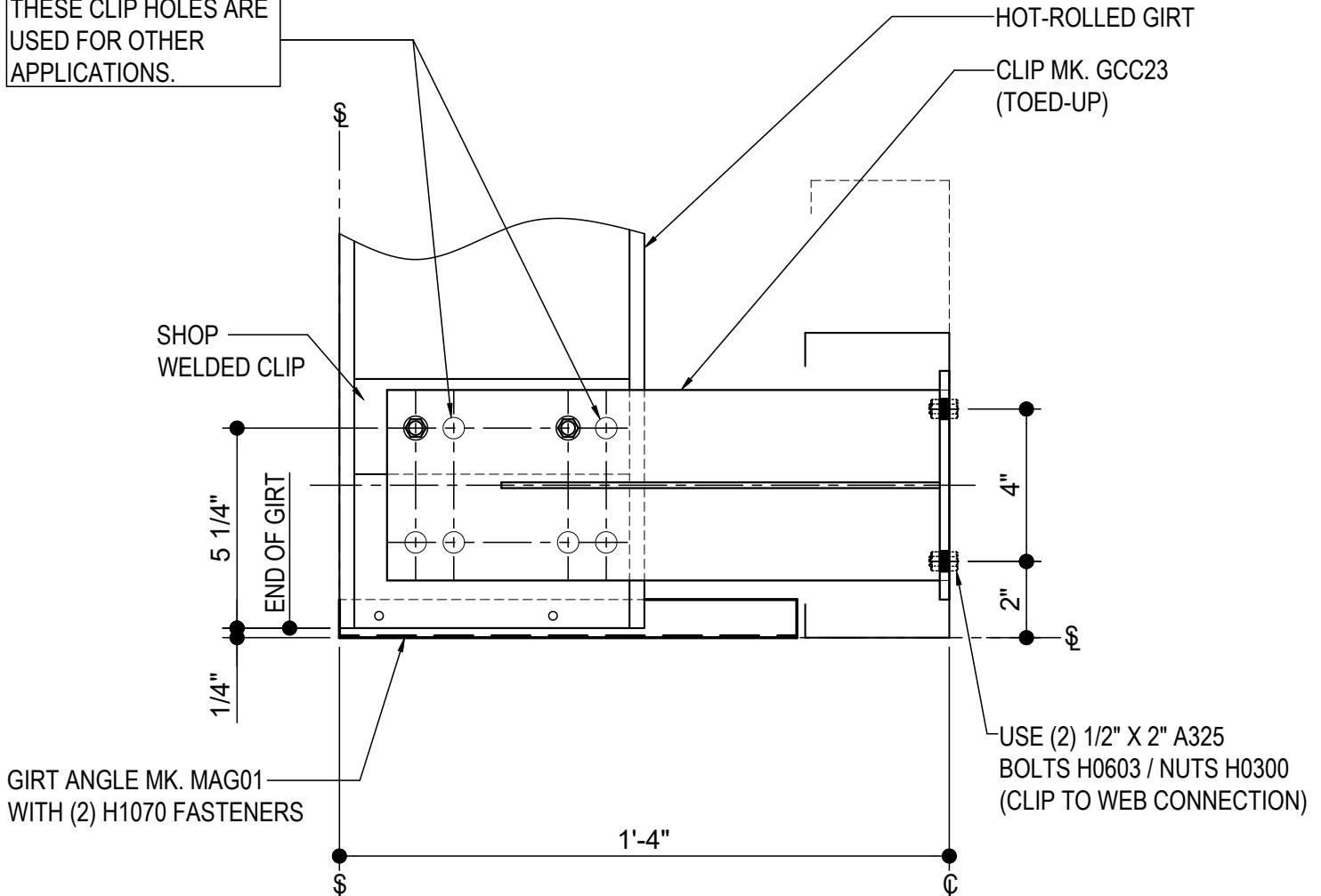
Detailer Notes:

- 1) WELDED CLIP TO HR GIRT: HCS08
- 2) DETAIL FOR BU/HR COLUMN ONLY.

CD0116 - HOT-ROLLED GIRT TERMINATION @ C.F. COL.

[Download the DWG file by clicking here.](#)

THESE CLIP HOLES ARE
USED FOR OTHER
APPLICATIONS.



HOT-ROLLED GIRT TERMINATION @ C.F. COL.

LEFT HAND DETAIL SHOWN. RIGHT HAND OPPOSITE

NOTE: USE (2) 1/2" X 2" A325 BOLTS (H0603) & NUTS (H0300)

REFERENCE ERECTOR NOTE FOR TYPICAL WASHER REQUIREMENTS

CD0116

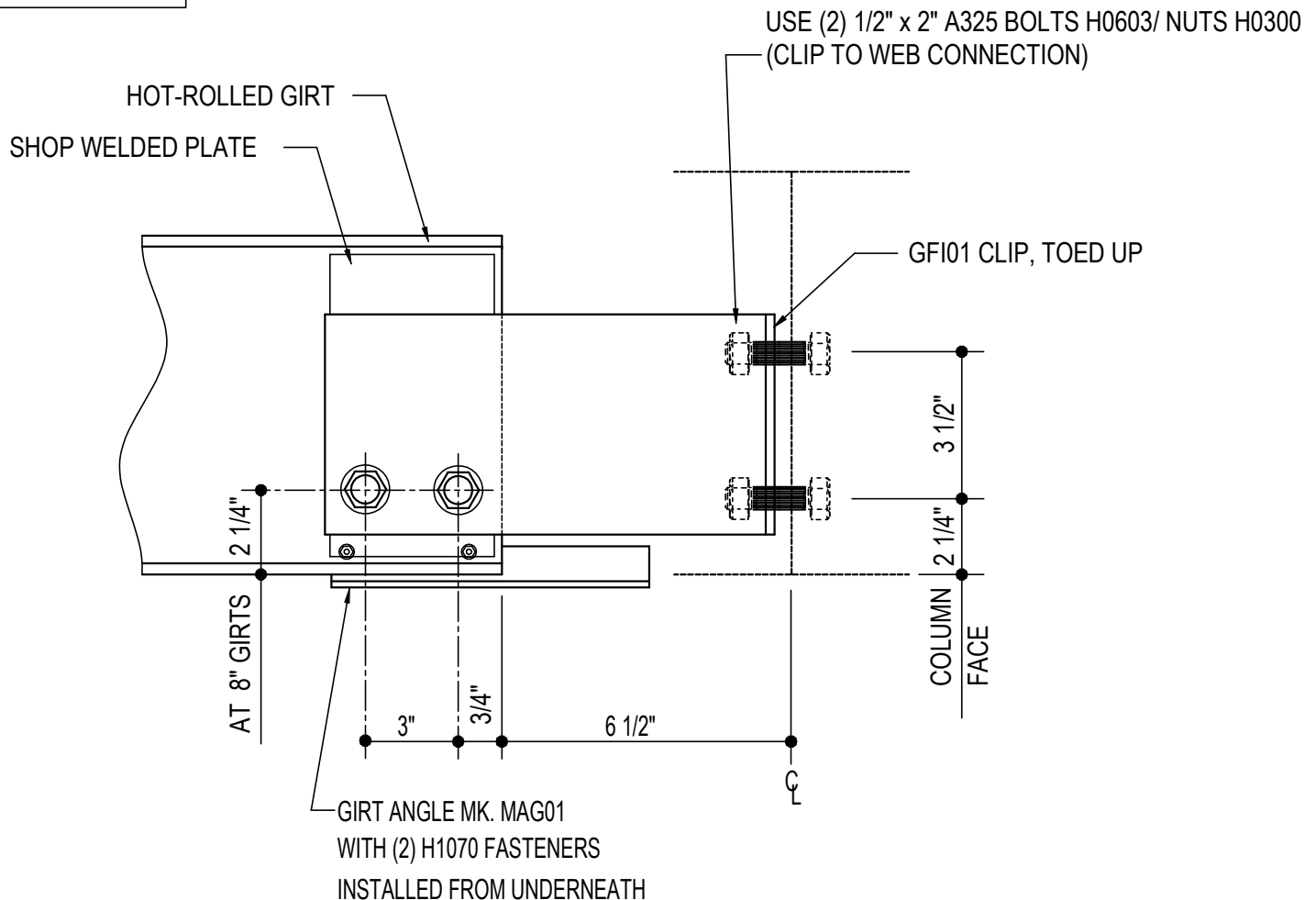
Detailer Notes:

- 1) THIS DETAIL IS FOR COLD FORMED COLUMN CONDITIONS ONLY.
- 2) THE SHOP WELDED CLIP SHOWN IN THE DETAIL, IS A HCS08.

CD0125 - HOT ROLLED GIRT TERMINATION DETAIL

[Download the DWG file by clicking here.](#)

LEFT HAND DETAIL
SHOWN, RIGHT HAND
OPPOSITE



HOT-ROLLED GIRT TERMINATION DETAIL

FLUSH HOT-ROLLED GIRTS

NOTE: USE (2) 1/2" x 2" A325 BOLTS (H0603) & NUTS (H0300)

REFERENCE STANDARD WASHER DETAIL FOR TYPICAL WASHER REQUIREMENTS

CD0125

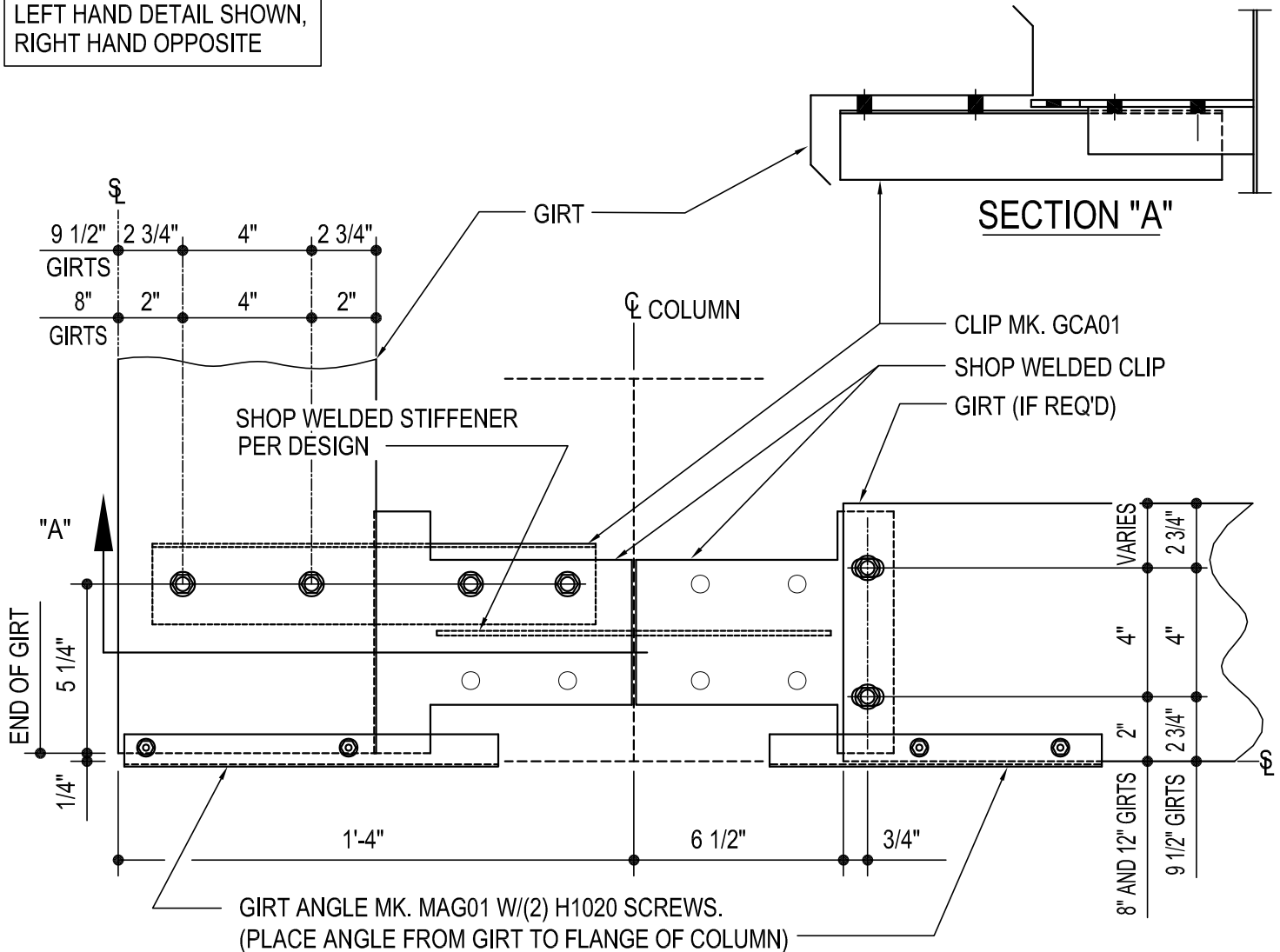
Detailer Notes:

- 1) WELDED CLIP TO HR GIRT: HCD08
- 2) DETAIL IS FOR BU/HR COLUMN ONLY.

CD1010 - FLUSH CORNER WELDED DETAIL

[Download the DWG file by clicking here.](#)

LEFT HAND DETAIL SHOWN,
RIGHT HAND OPPOSITE



CORNER GIRT DETAIL

CORNER FLUSH GIRT DETAIL WITH WELDED CLIPS

NOTE: USE (6) 1/2" X 1 1/4" A307 BOLTS H0500/NUTS H0400

REFERENCE WASHER DETAIL FOR TYPICAL WASHER REQUIREMENTS

CD1010

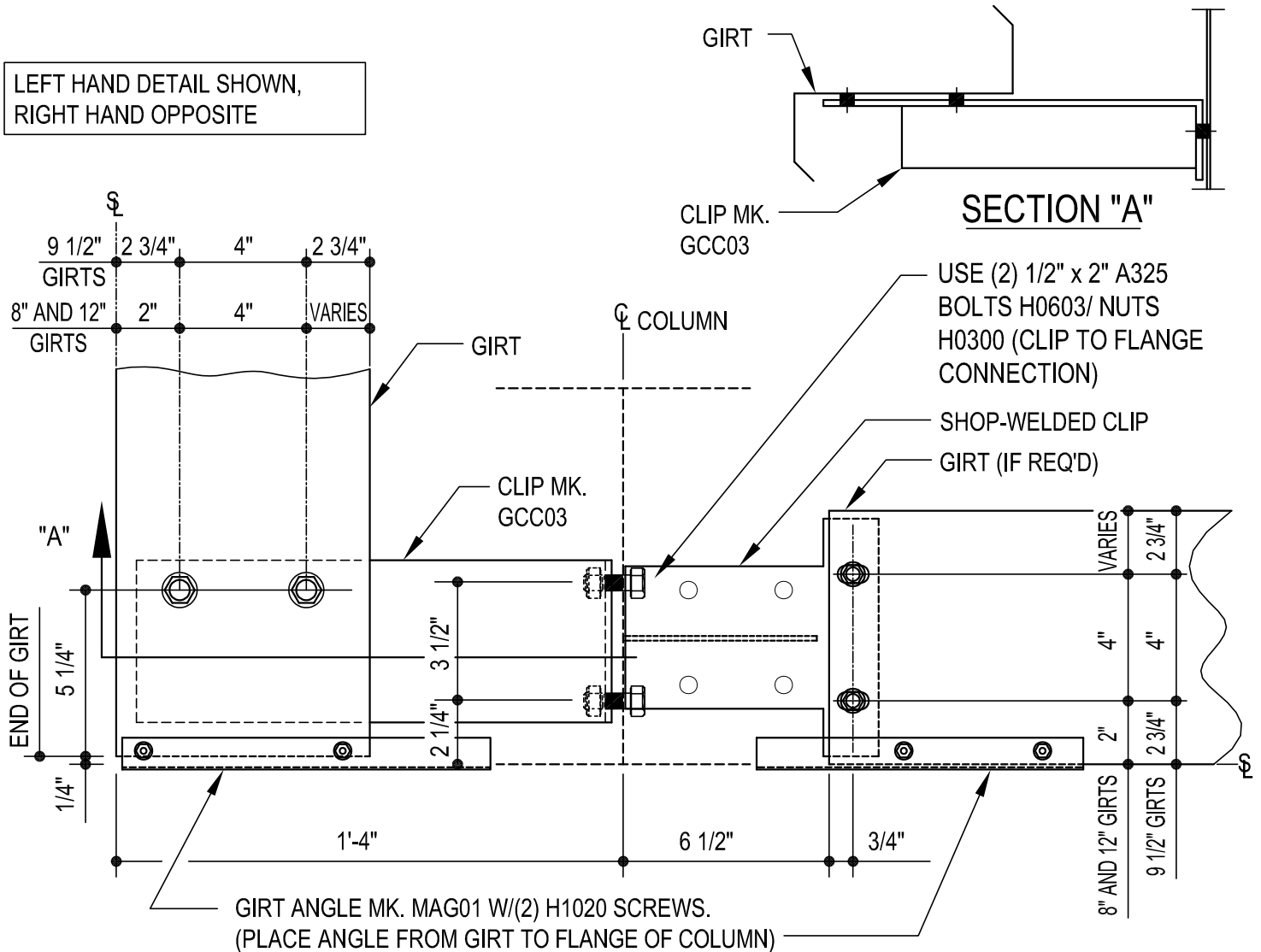
Detailer Notes:

- 1) WELDED CLIP TO COLUMN: GF102
- 2) ADD STIFFENER PER DESIGN: WS_04
- 3) USE BOLTED ALTERNATE DETAIL FOR 12" GIRTS

CD1015 - FLUSH BOLTED CORNER GIRT DETAIL

[Download the DWG file by clicking here.](#)

LEFT HAND DETAIL SHOWN,
RIGHT HAND OPPOSITE



FLUSH BOLTED CORNER GIRT DETAIL

FLUSH GIRT DETAIL WITH BOLTED CORNER CLIP

NOTE: USE (4) 1/2" X 1 1/4" A307 BOLTS H0500/NUTS H0400

REFERENCE WASHER DETAIL FOR TYPICAL WASHER REQUIREMENTS

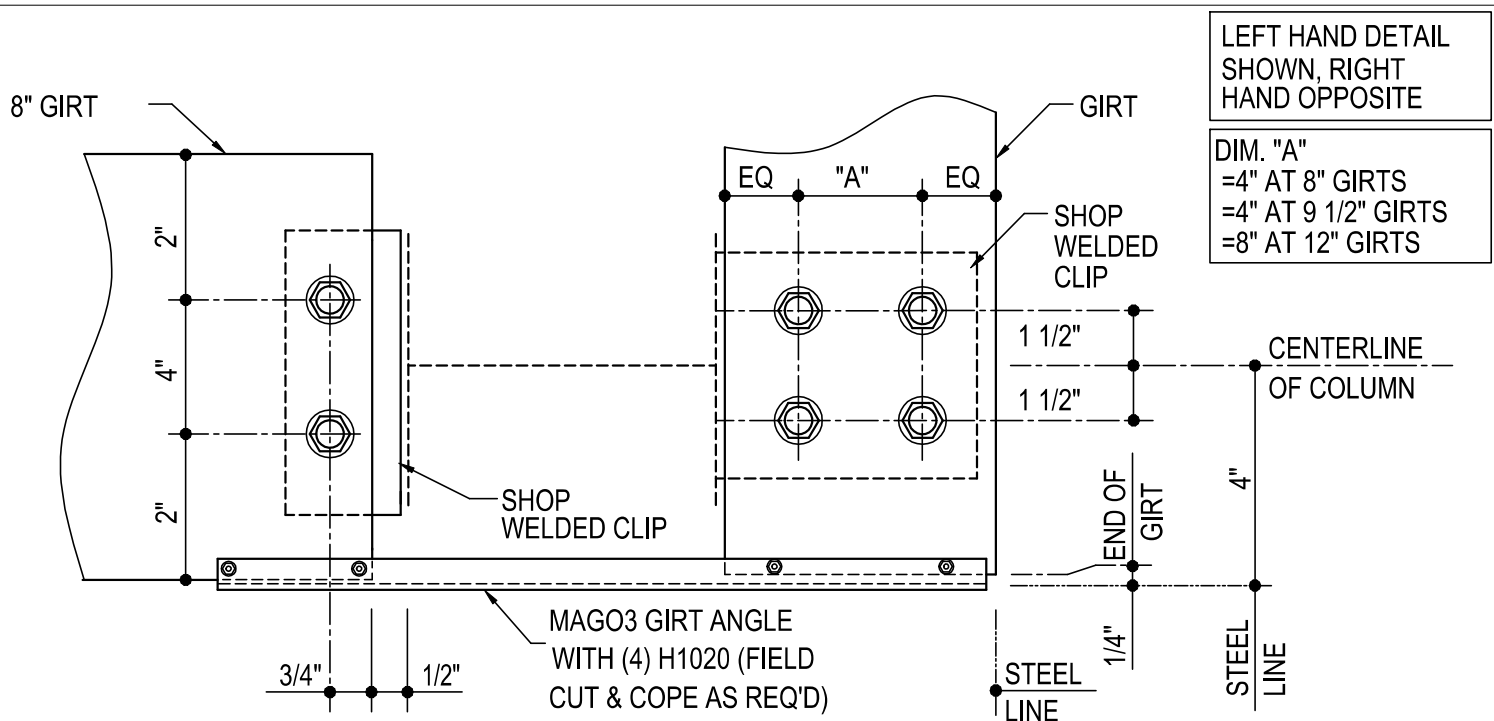
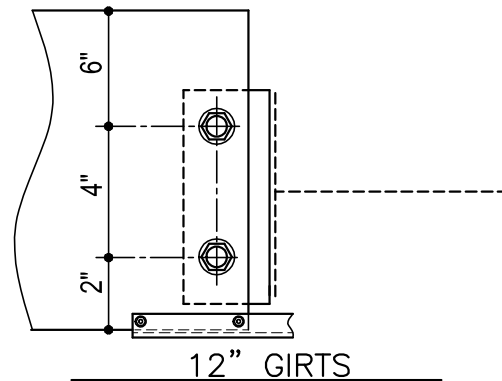
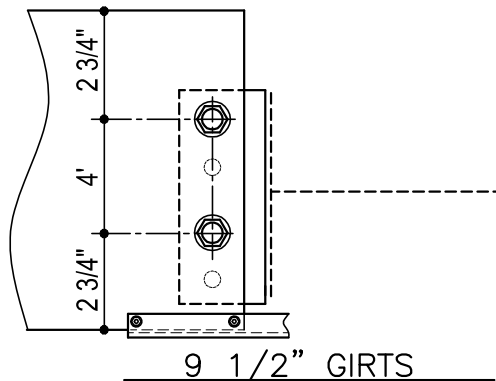
CD1015

Detailer Notes:

- 1) WELDED CLIP TO COLUMN: GF102
- 2) ADD STIFFENER PER DESIGN: WS_04

CD1020 - FLUSH CORNER COLUMN GIRT DETAIL

[Download the DWG file by clicking here.](#)



FLUSH CORNER COLUMN GIRT DETAIL

NOTE: USE (6) 1/2" x 1 1/4" A307 BOLTS H0500/NUTS H0400
REFERENCE STANDARD WASHER DETAIL FOR TYPICAL
WASHER REQUIREMENTS

CD1020

Detailer Notes:

1) (4) HOLE WELDED CLIP:
8" - PCU01
9 1/2" - GCB62
12" - GCB12

2) (2) HOLE WELDED CLIP:
8" - GRC03
9 1/2" - GRC09
12" - GRC03

CD1030 - FLUSH TO FLUSH CORNER DETAIL

[Download the DWG file by clicking here.](#)

ERECTOR NOTE

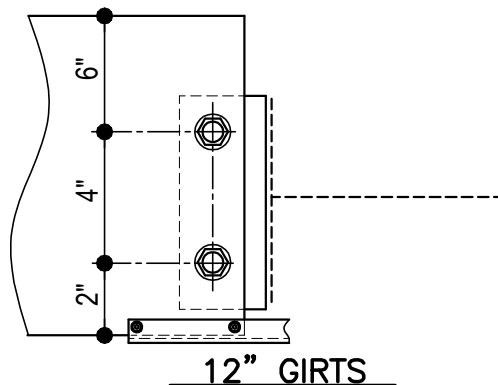
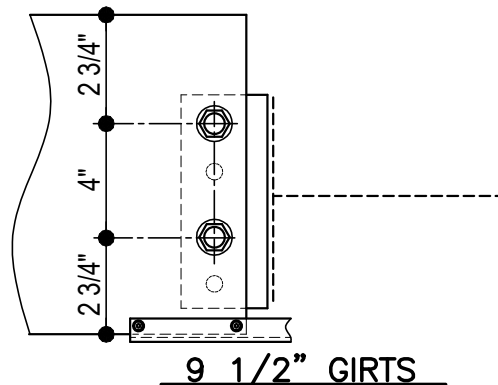
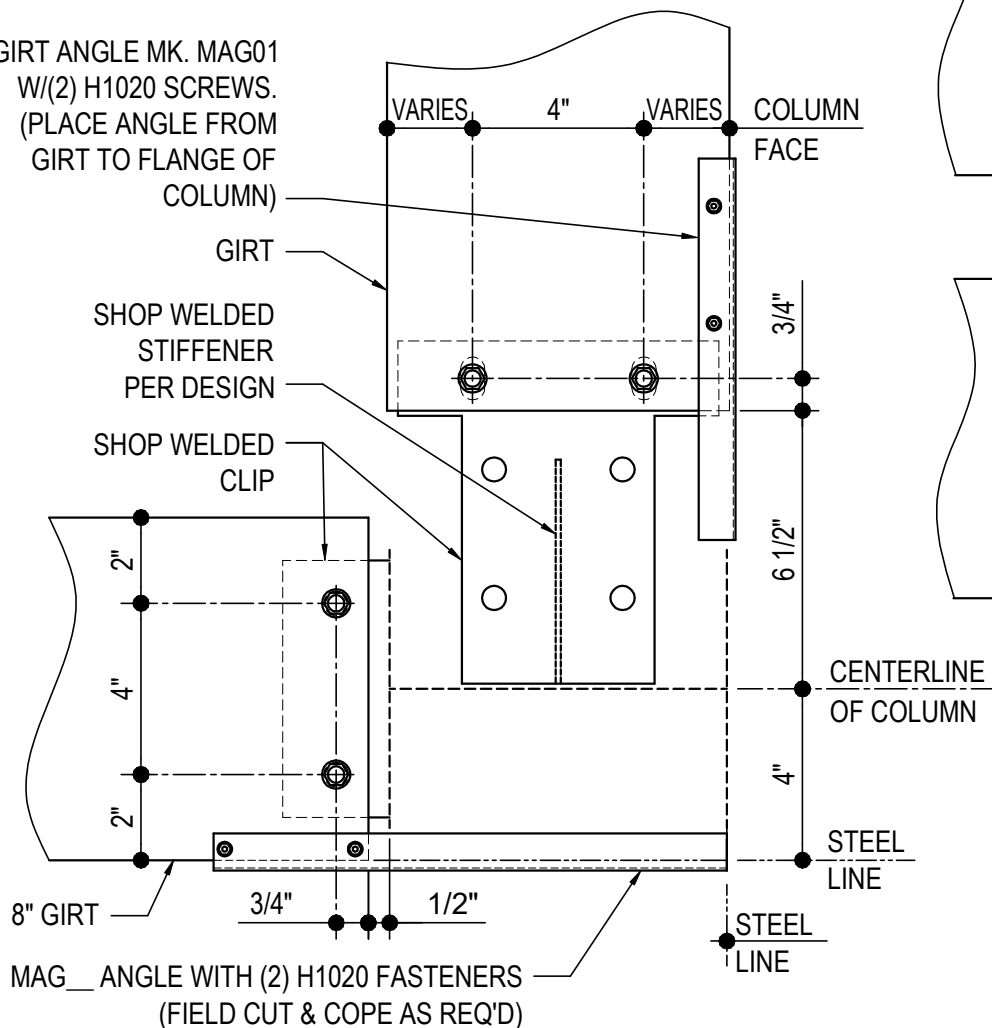
GIRT CLIPS ARE FACTORY PUNCHED TO BE USED WITH MULTIPLE GIRT DEPTHS. REFER TO THE STANDARD BOLT PLACMENT DETAIL(S) FOR PROPER BOLT PLACEMENT.

GIRT ANGLE MK. MAG01
W/(2) H1020 SCREWS.
(PLACE ANGLE FROM
GIRT TO FLANGE OF
COLUMN)

GIRT

SHOP WELDED
STIFFENER
PER DESIGN

SHOP WELDED
CLIP



RIGHT HAND
SHOWN, LEFT HAND
OPPOSITE

FLUSH TO FLUSH CORNER DETAIL

NOTE: USE (4) 1/2"x 1 1/4" A307 BOLTS H0500/NUTS H0400
REFERENCE STANDARD WASHER DETAIL FOR TYPICAL WASHER REQUIREMENTS

CD1030

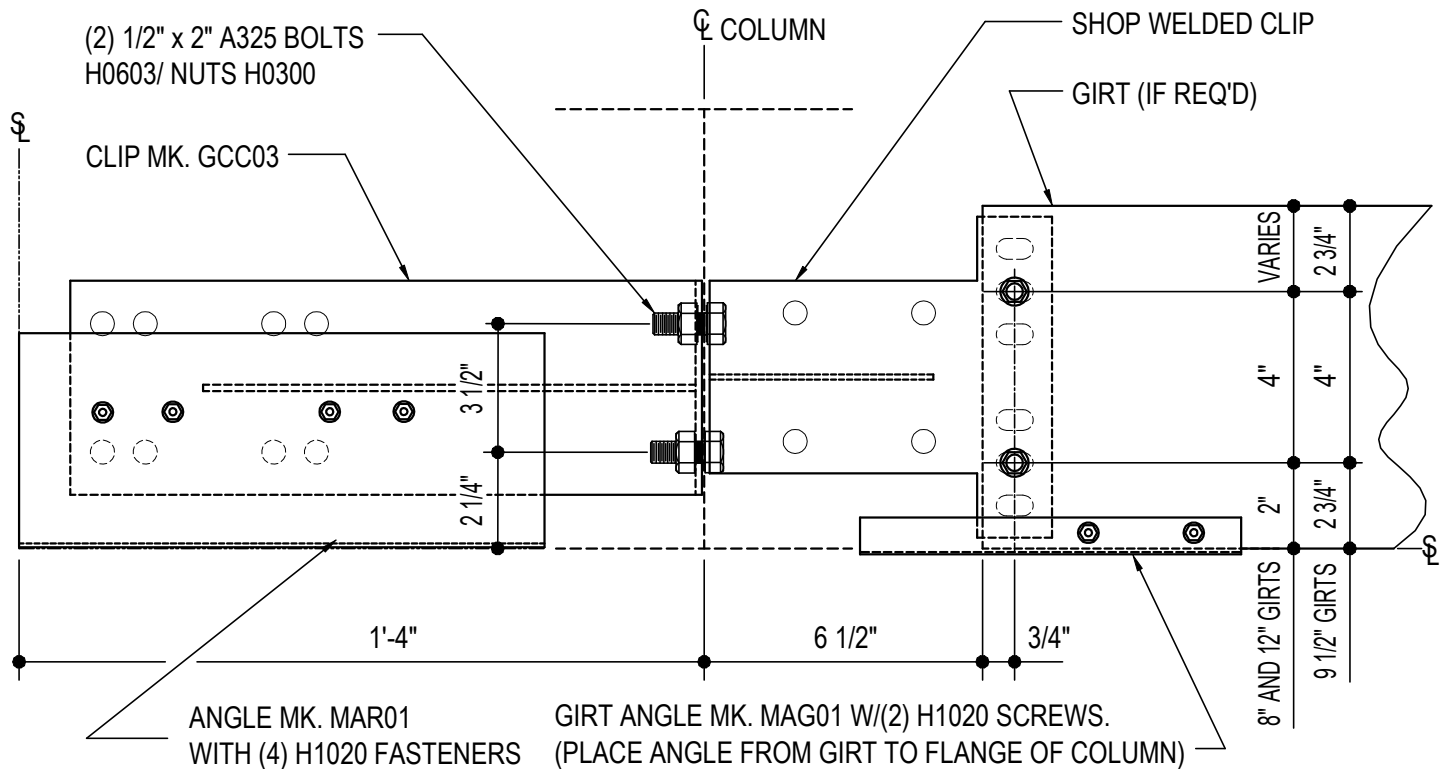
Detailer Notes:

- 1) (2) HOLE WELDED CLIP: GRC03 (AT 8" AND 12" GIRTS), GRC09 (AT 9 1/2" GIRTS)
- 2) WELDED CLIP AT COLUMN WEB: GFI02
- 3) ADD STIFFENER PER DESIGN WS_04

CD1040 - FLUSH GIRT TERMINATION W/ EXTENSION TO STEEL LINE

[Download the DWG file by clicking here.](#)

LEFT HAND DETAIL SHOWN,
RIGHT HAND OPPOSITE



GIRT TERMINATION TO STEEL LINE

GIRT TERMINATION WITH EXTENSION TO STEEL LINE

NOTE: USE (2) 1/2" X 1 1/4" A307 BOLTS H0500/NUTS H0400

REFERENCE WASHER DETAIL FOR TYPICAL WASHER REQUIREMENTS

CD1040

Detailer Notes:

- 1) WELDED CLIP TO COLUMN: GF102
- 2) ADD STIFFENER PER DESIGN: WS_04