

LOW EAVE (GUTTER)

DD0010 - GUTTER - WALL PANEL

DD0030 - GUTTER- MASONRY WALL

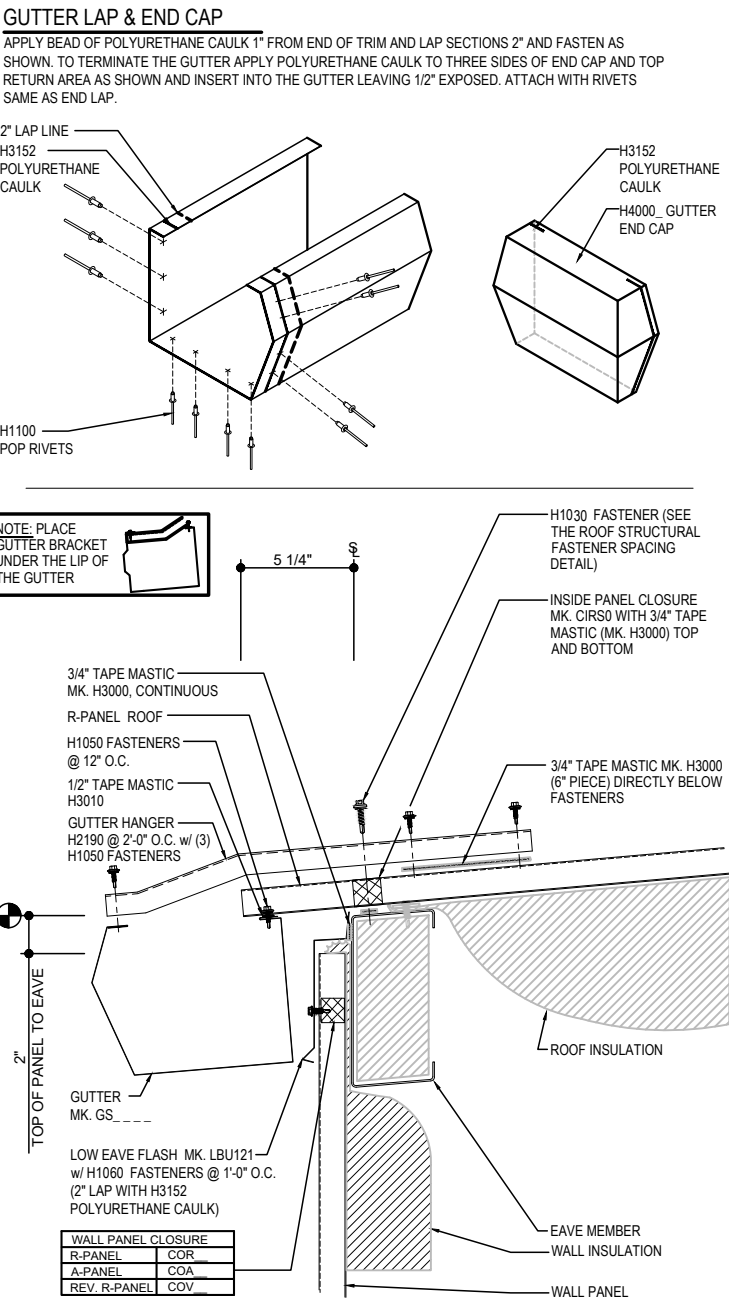
DD0050 - GUTTER with NO WALL

DD0310 - HORIZONTAL GUTTER - WALL PANEL

DD0400 - HORIZONTAL GUTTER with MASONRY WALL

DD0010 - GUTTER w/ WALL PANEL

[Download the DWG file by clicking here.](#)



EAVE GUTTER DETAIL
EAVE GUTTER DETAIL w/ WALL PANELS
SEE WALL SHEETING ERECTION NOTES FOR WALL PANEL FASTENER LOCATIONS

DD0010

Detailer Notes:

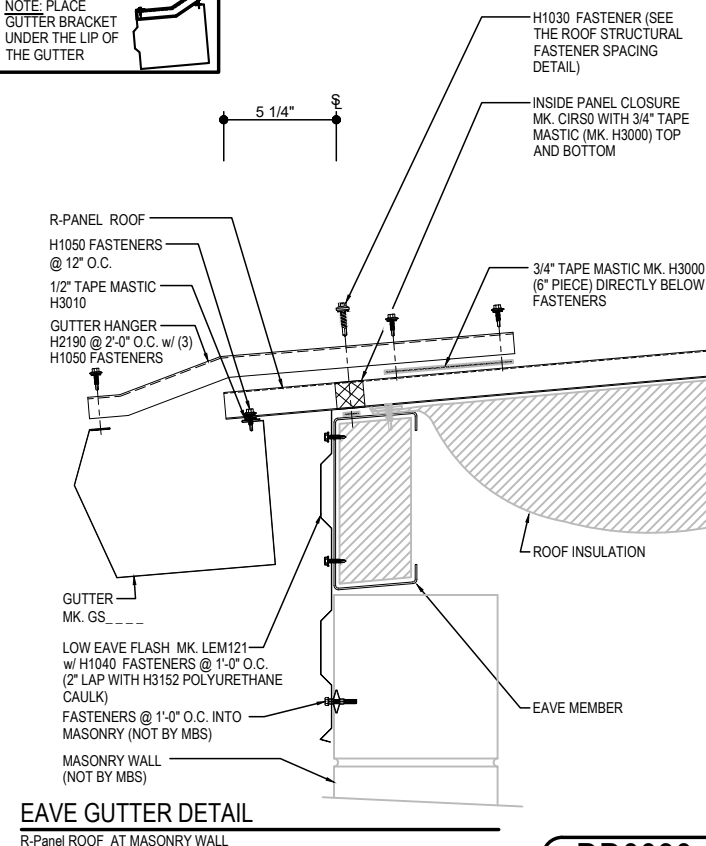
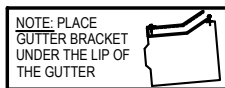
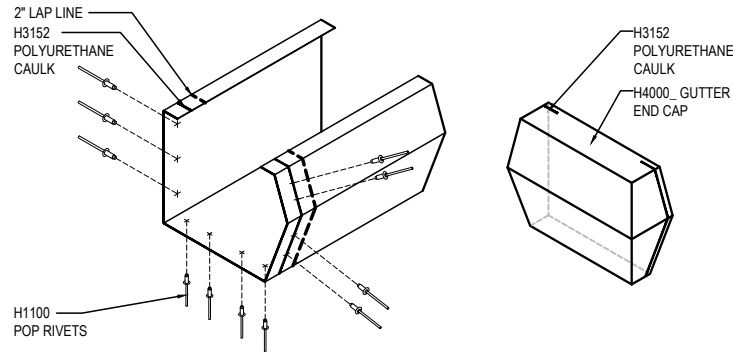
1) CLOSURES LOW EAVE LAYER DEFAULT IS ON. LAYER MUST BE TURNED OFF IF CLOSURES ARE NOT REQUIRED.

DD0030 - GUTTER w/ MASONRY WALL

[Download the DWG file by clicking here.](#)

GUTTER LAP & END CAP

APPLY BEAD OF POLYURETHANE CAULK 1" FROM END OF TRIM AND LAP SECTIONS 2" AND FASTEN AS SHOWN. TO TERMINATE THE GUTTER APPLY POLYURETHANE CAULK TO THREE SIDES OF END CAP AND TOP RETURN AREA AS SHOWN AND INSERT INTO THE GUTTER LEAVING 1/2" EXPOSED. ATTACH WITH RIVETS SAME AS END LAP.



EAVE GUTTER DETAIL

R-Panel ROOF AT MASONRY WALL

DD0030

Detailer Notes:

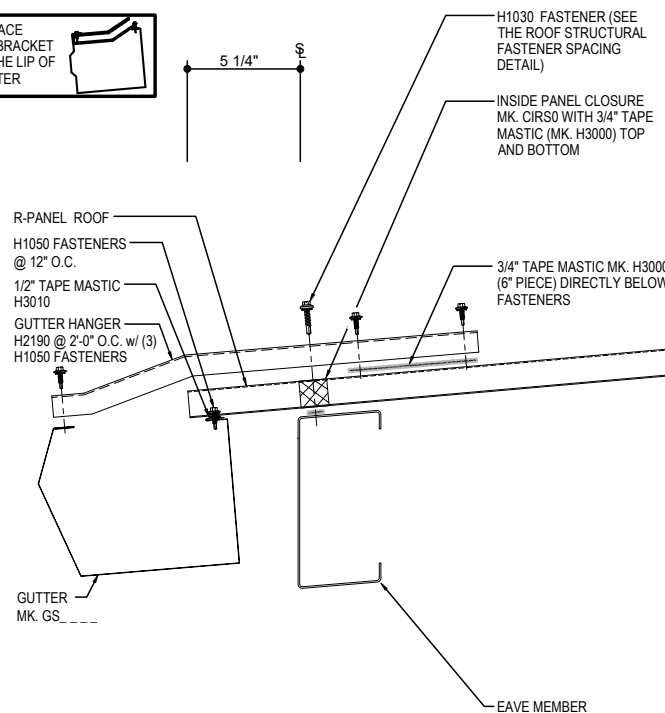
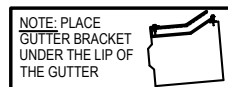
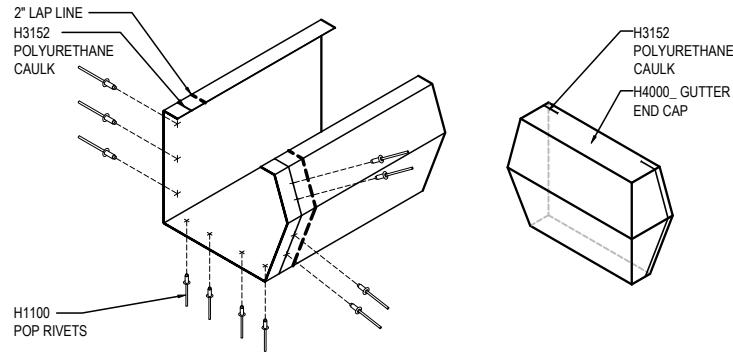
- 1) CLOSURES LOW EAVE LAYER DEFAULT IS ON. LAYER MUST BE TURNED OFF IF CLOSURES ARE NOT REQUIRED.

DD0050 - GUTTER w/ NO WALL

[Download the DWG file by clicking here.](#)

GUTTER LAP & END CAP

APPLY BEAD OF POLYURETHANE CAULK 1" FROM END OF TRIM AND LAP SECTIONS 2" AND FASTEN AS SHOWN. TO TERMINATE THE GUTTER APPLY POLYURETHANE CAULK TO THREE SIDES OF END CAP AND TOP RETURN AREA AS SHOWN AND INSERT INTO THE GUTTER LEAVING 1/2" EXPOSED. ATTACH WITH RIVETS SAME AS END LAP.



EAVE GUTTER DETAIL

R-PANEL ROOF WITHOUT WALL PANEL

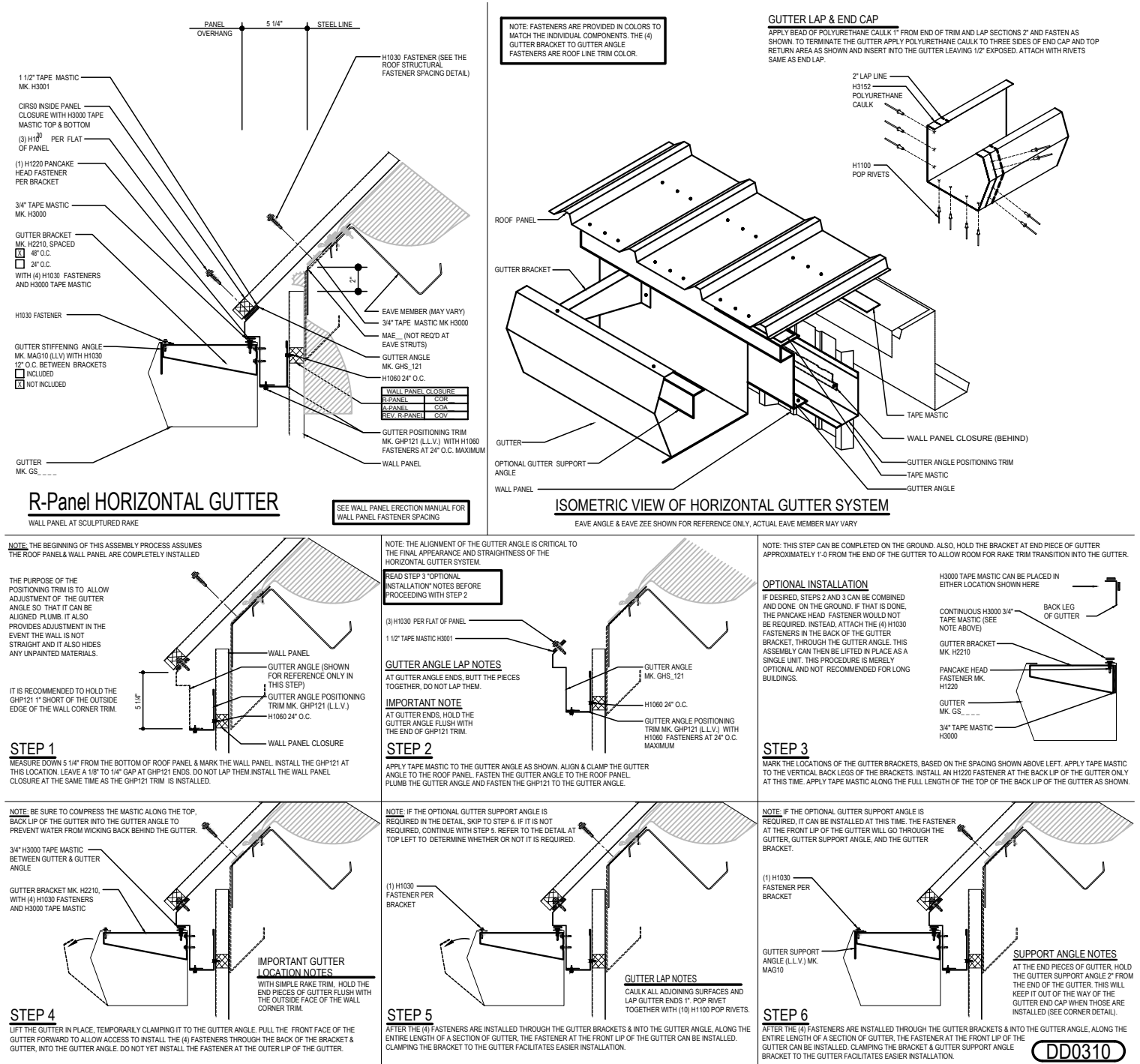
DD0050

Detailer Notes:

1) N/A

DD0310 - HORIZONTAL GUTTER w/ WALL PANEL

[Download the DWG file by clicking here.](#)

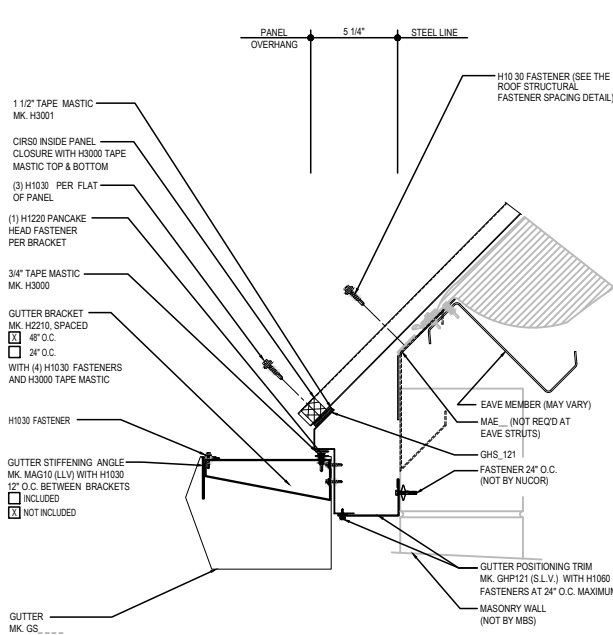


Detailer Notes:

1) CLOSURES LOW EAVE LAYER DEFAULT IS ON. LAYER MUST BE TURNED OFF IF CLOSURES ARE NOT REQUIRED.

DD0400 - HORIZONTAL GUTTER w/ MASONRY WALL

[Download the DWG file by clicking here.](#)



R-Panel HORIZONTAL GUTTER

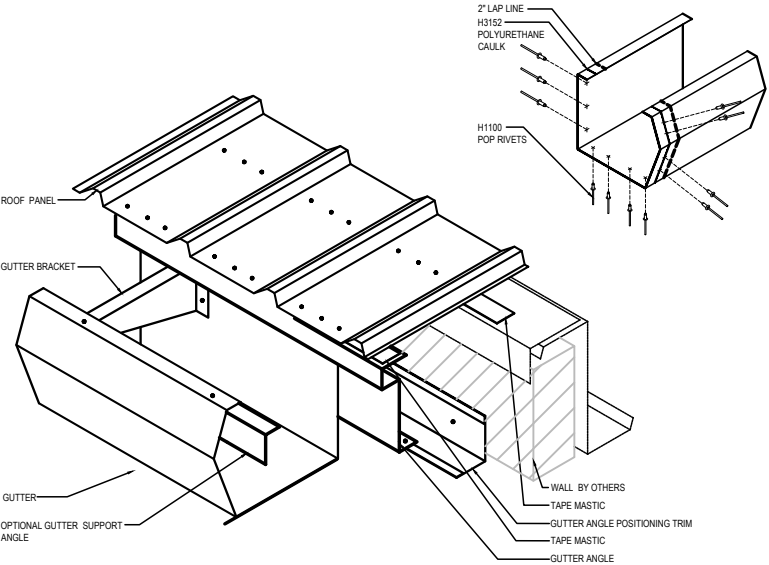
WALL PANEL AT SCULPTURED RAKE

SEE WALL PANEL ERECTION MANUAL FOR
WALL PANEL FASTENER SPACING

NOTE: FASTENERS ARE PROVIDED IN COLORS TO
MATCH THE INDIVIDUAL COMPONENTS. THE (4)
GUTTER BRACKET TO GUTTER ANGLE
FASTENERS ARE ROOF LINE TRIM COLOR.

GUTTER LAP & END CAP

APPLY BEAD OF POLYURETHANE CAULK 1\"/>



ISOMETRIC VIEW OF HORIZONTAL GUTTER SYSTEM

EAVE ANGLE & EAVE ZEE SHOWN FOR REFERENCE ONLY, ACTUAL EAVE MEMBER MAY VARY

NOTE: THE BEGINNING OF THIS ASSEMBLY PROCESS ASSUMES
THE ROOF PANEL & WALL PANEL ARE COMPLETELY INSTALLED

THE PURPOSE OF THE
POSITIONING TRIM IS TO ALLOW
ADJUSTMENT OF THE GUTTER
ANGLE SO THAT IT CAN BE
ALIGNED PLUMB. IT ALSO
PROVIDES ADJUSTMENT IN THE
EVENT THE WALL IS NOT
STRAIGHT AND IT ALSO HIDES
ANY UNPAINTED MATERIALS.

IT IS RECOMMENDED TO HOLD THE
GHP121 1\"/>

STEP 1

MEASURE DOWN 5 1/4\"/>

NOTE: THE ALIGNMENT OF THE GUTTER ANGLE IS CRITICAL TO
THE FINAL APPEARANCE AND STRAIGHTNESS OF THE
HORIZONTAL GUTTER SYSTEM.

READ STEP 3 \"OPTIONAL
INSTALLATION\" NOTES BEFORE
PROCEEDING WITH STEP 2

(3) H1030 PER FLAT OF PANEL
1 1/2\"/>

GUTTER ANGLE LAP NOTES

AT GUTTER ANGLE ENDS, BUTT THE PIECES
TOGETHER, DO NOT LAP THEM.

FASTENERS @ 2'-0\"/>

IMPORTANT NOTE
AT GUTTER ENDS, HOLD THE
GUTTER ANGLE FLUSH WITH
THE END OF GHP121 TRIM.

STEP 2

APPLY TAPE MASTIC TO THE GUTTER ANGLE AS SHOWN. ALIGN & CLAMP THE GUTTER
ANGLE TO THE ROOF PANEL. FASTEN THE GUTTER ANGLE TO THE ROOF PANEL.
PLUMB THE GUTTER ANGLE AND FASTEN THE GHP121 TO THE GUTTER ANGLE.

NOTE: BE SURE TO COMPRESS THE MASTIC ALONG THE TOP,
BACK LIP OF THE GUTTER INTO THE GUTTER ANGLE TO
PREVENT WATER FROM WICKING BACK BEHIND THE GUTTER.

3/4\"/>

GUTTER BRACKET MK. H2210,
WITH (4) H1030 FASTENERS
AND H3000 TAPE MASTIC

STEP 4

LIFT THE GUTTER IN PLACE, TEMPORARILY CLAMPING IT TO THE GUTTER ANGLE. PULL THE FRONT FACE OF THE
GUTTER FORWARD TO ALLOW ACCESS TO INSTALL THE (4) FASTENERS THROUGH THE BACK OF THE BRACKET &
GUTTER, INTO THE GUTTER ANGLE. DO NOT YET INSTALL THE FASTENER AT THE GUTTER LIP OF THE GUTTER.

NOTE: IF THE OPTIONAL GUTTER SUPPORT ANGLE IS
REQUIRED IN THE DETAIL, SKIP TO STEP 6. IF IT IS NOT
REQUIRED, CONTINUE WITH STEP 5. REFER TO THE DETAIL AT
TOP LEFT TO DETERMINE WHETHER OR NOT IT IS REQUIRED.

(1) H1030
FASTENER PER
BRACKET

GUTTER LAP NOTES
CAULK ALL ADJOINING SURFACES AND
LAP GUTTER ENDS 1\"/>

STEP 5

AFTER THE (4) FASTENERS ARE INSTALLED THROUGH THE GUTTER BRACKETS & INTO THE GUTTER ANGLE, ALONG THE
ENTIRE LENGTH OF A SECTION OF GUTTER, THE FASTENER AT THE FRONT LIP OF THE GUTTER CAN BE INSTALLED.
CLAMPING THE BRACKET TO THE GUTTER FACILITATES EASIER INSTALLATION.

NOTE: THIS STEP CAN BE COMPLETED ON THE GROUND. ALSO, HOLD THE BRACKET AT END PIECE OF GUTTER
APPROXIMATELY 1'-0\"/>

OPTIONAL INSTALLATION

IF DESIRED, STEPS 2 AND 3 CAN BE COMBINED
AND DONE ON THE GROUND. IF THAT IS DONE,
THE PANCAKE HEAD FASTENER WOULD NOT
BE REQUIRED. INSTEAD, ATTACH THE (4) H1030
FASTENERS IN THE BACK OF THE GUTTER
BRACKET, THROUGH THE GUTTER ANGLE. THIS
ASSEMBLY CAN THEN BE LIFTED IN PLACE AS A
SINGLE UNIT. THIS PROCEDURE IS MERELY
OPTIONAL AND NOT RECOMMENDED FOR LONG
BUILDINGS.

H3000 TAPE MASTIC CAN BE PLACED IN
EITHER LOCATION SHOWN HERE

CONTINUOUS H3000 3/4\"/>

TAPE MASTIC (SEE
NOTE ABOVE)

GUTTER BRACKET
MK. H2210

PANCAKE HEAD
FASTENER MK.
H1220

GUTTER
MK. GS.

3/4\"/>

STEP 3

MARK THE LOCATIONS OF THE GUTTER BRACKETS, BASED ON THE SPACING SHOWN ABOVE LEFT. APPLY TAPE MASTIC
TO THE VERTICAL BACK LESS OF THE BRACKETS. INSTALL AN H1220 FASTENER AT THE BACK LIP OF THE GUTTER ONLY
AT THIS TIME. APPLY TAPE MASTIC ALONG THE FULL LENGTH OF THE TOP OF THE BACK LIP OF THE GUTTER AS SHOWN.

NOTE: IF THE OPTIONAL GUTTER SUPPORT ANGLE IS
REQUIRED, IT CAN BE INSTALLED AT THIS TIME. THE FASTENER
AT THE FRONT LIP OF THE GUTTER WILL GO THROUGH THE
GUTTER, GUTTER SUPPORT ANGLE, AND THE GUTTER
BRACKET.

(1) H1030
FASTENER PER
BRACKET

GUTTER SUPPORT
ANGLE (L.L.V.) MK.
MAG10

STEP 6

AFTER THE (4) FASTENERS ARE INSTALLED THROUGH THE GUTTER BRACKETS & INTO THE GUTTER ANGLE, ALONG THE
ENTIRE LENGTH OF A SECTION OF GUTTER, THE FASTENER AT THE FRONT LIP OF THE GUTTER CAN BE INSTALLED. CLAMPING THE BRACKET & GUTTER SUPPORT ANGLE
BRACKET TO THE GUTTER FACILITATES EASIER INSTALLATION.

SUPPORT ANGLE NOTES
AT THE END PIECES OF GUTTER, HOLD
THE GUTTER SUPPORT ANGLE 2\"/>

DD0400

Detailer Notes:

- 1) CLOSURES LOW EAVE LAYER DEFAULT IS ON. LAYER MUST BE TURNED OFF IF CLOSURES ARE NOT REQUIRED.
- 2) THIS STANDARD DETAIL IS APPROVED FOR MIAMI-DADE USE. ALTERATIONS TO THIS DETAIL MAY IMPACT APPROVAL.