

**HIGH EAVE (SCULPTURED)**

DH0009 - SCULPTURED HIGH EAVE STRUT W/ WALL PANEL

DH0021 - SCULPTURED HIGH EAVE W/ MASONRY WALL

DH0028 - SCULPTURED HIGH EAVE STRUT W/ OPEN WALL AND NO SOFFIT PANEL

DH0029 - SCULPTURED HIGH EAVE STRUT W/ OPEN WALL AND SOFFIT PANEL

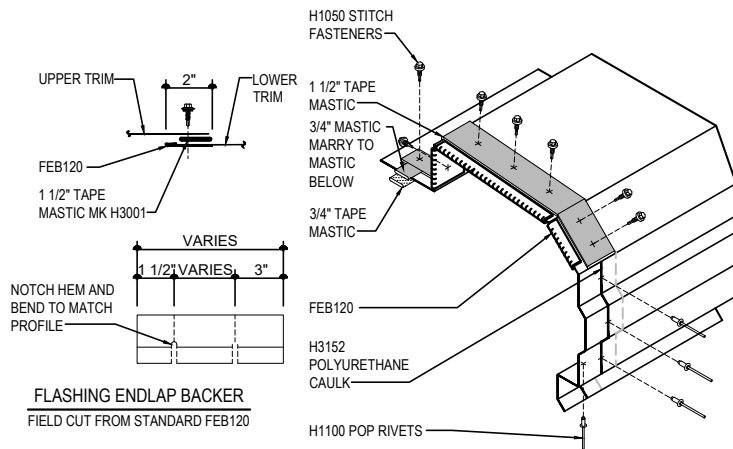
---

DH0009 - SCULPTURED HIGH EAVE STRUT W/ WALL PANEL

[Download the DWG file by clicking here.](#)

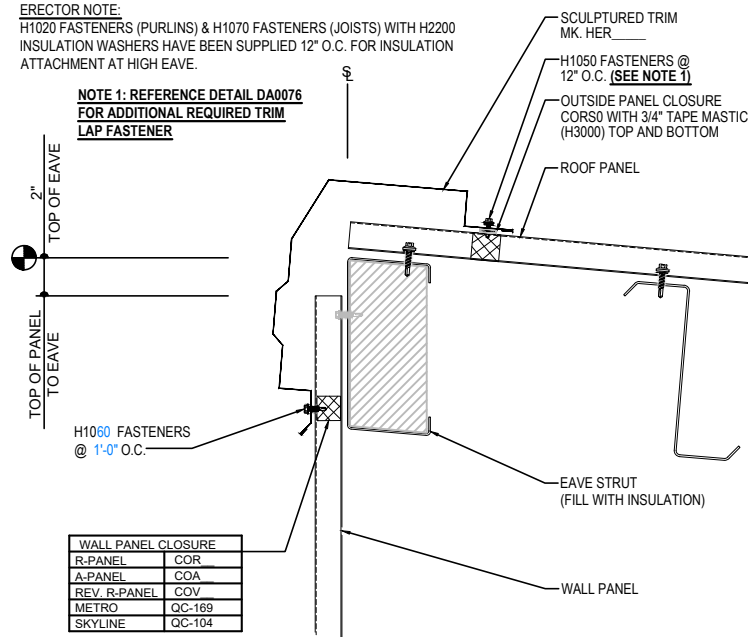
**HIGH EAVE LAP & FLASHING BACKER**

SLIDE FIELD CUT SECTION FLASHING ENDLAP BACKER ONTO THE LOWER TRIM PIECE. PLACE TAPE MASTIC NEXT TO HEM OF THE BACKER (NOT ON TOP OF HEM). APPLY CONTINUOUS BEAD OF CAULK 1" FROM END OF TRIM DOWN PROFILE OF TRIM. FASTEN LAP WITH STITCH FASTENERS AND POP RIVETS AS SHOWN.



**ERECTOR NOTE:**  
H1020 FASTENERS (PURLINS) & H1070 FASTENERS (JOISTS) WITH H2200 INSULATION WASHERS HAVE BEEN SUPPLIED 12" O.C. FOR INSULATION ATTACHMENT AT HIGH EAVE.

**NOTE 1: REFERENCE DETAIL DA0076 FOR ADDITIONAL REQUIRED TRIM LAP FASTENER**



WALL PANEL CLOSURE	
R-PANEL	COR
A-PANEL	COA
REV. R-PANEL	COV
METRO	QC-169
SKYLINE	QC-104

**SCULPTURED HIGH EAVE STRUT W/ WALL PANEL**

R-PANEL ROOF  
SEE WALL SHEETING ERECTION NOTES FOR WALL PANEL FASTENER LOCATIONS

**DH0009**

**Detailer Notes:**

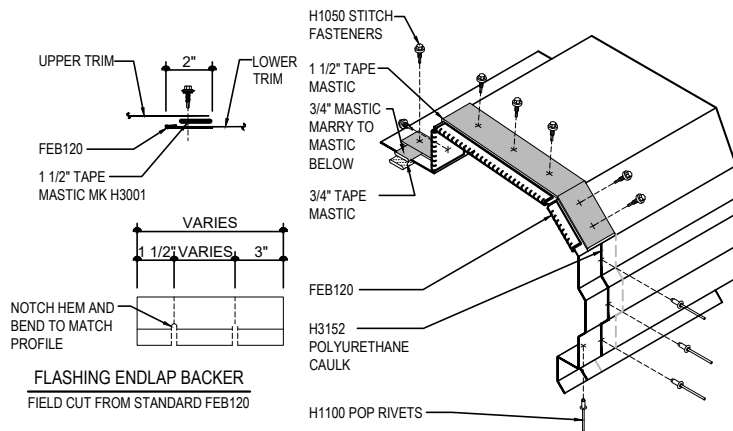
- 1) CLOSURES HIGH EAVE LAYER DEFAULT IS ON. LAYER MUST BE TURNED OFF IF CLOSURES ARE NOT REQUIRED.

DH0021 - SCULPTURED HIGH EAVE W/ MASONRY WALL

[Download the DWG file by clicking here.](#)

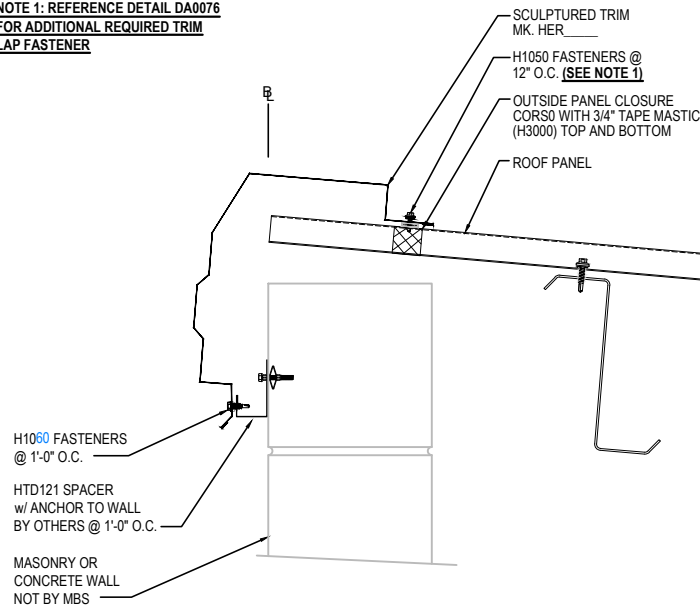
**HIGH EAVE LAP & FLASHING BACKER**

SLIDE FIELD CUT SECTION FLASHING ENDLAP BACKER ONTO THE LOWER TRIM PIECE. PLACE TAPE MASTIC NEXT TO HEM OF THE BACKER (NOT ON TOP OF HEM). APPLY CONTINUOUS BEAD OF CAULK 1" FROM END OF TRIM DOWN PROFILE OF TRIM. FASTEN LAP WITH STITCH FASTENERS AND POP RIVETS AS SHOWN.



**FLASHING ENDLAP BACKER**  
FIELD CUT FROM STANDARD FEB120

**NOTE 1: REFERENCE DETAIL DA0076 FOR ADDITIONAL REQUIRED TRIM LAP FASTENER**



**SCULPTURED HIGH EAVE W/ MASONRY WALL**  
R-PANEL ROOF

**DH0021**

Detailer Notes:

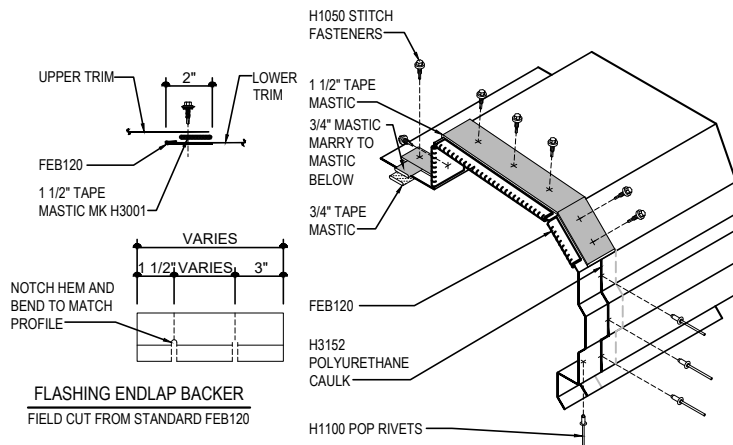
- 1) N/A

DH0028 - SCULPTURED HIGH EAVE STRUT W/ OPEN WALL AND NO SOFFIT PANEL

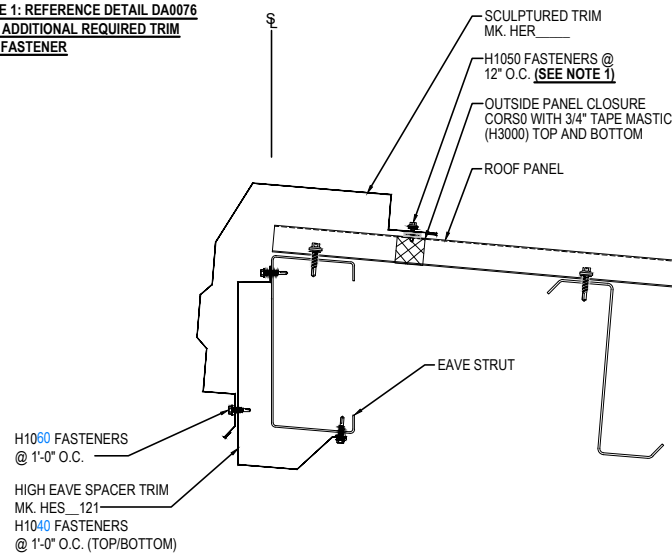
[Download the DWG file by clicking here.](#)

**HIGH EAVE LAP & FLASHING BACKER**

SLIDE FIELD CUT SECTION FLASHING ENDLAP BACKER ONTO THE LOWER TRIM PIECE. PLACE TAPE MASTIC NEXT TO HEM OF THE BACKER (NOT ON TOP OF HEM). APPLY CONTINUOUS BEAD OF CAULK 1" FROM END OF TRIM DOWN PROFILE OF TRIM. FASTEN LAP WITH STITCH FASTENERS AND POP RIVETS AS SHOWN.



**NOTE 1: REFERENCE DETAIL DA0076 FOR ADDITIONAL REQUIRED TRIM LAP FASTENER**



**SCULPTURED HIGH EAVE STRUT W/ OPEN WALL AND NO SOFFIT PANEL**  
R-PANEL ROOF

**DH0028**

Detailer Notes:

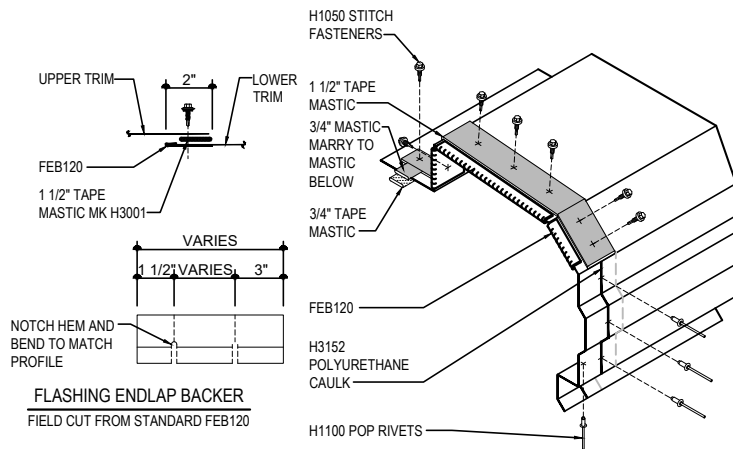
- 1) DETAIL CAN BE USED WITH PARTIALLY SHEETED WALLS AND FULLY OPEN WALLS.
- 2) DETAIL APPLIES TO THE MAIN BUILDING EAVE LINE. SEE EAVE/RAKE EXTENSION OR CANOPY SHEETING SECTIONS FOR OTHER SOFFIT/LINER CONFIGURATIONS.

DH0029 - SCULPTURED HIGH EAVE STRUT W/ OPEN WALL AND SOFFIT PANEL

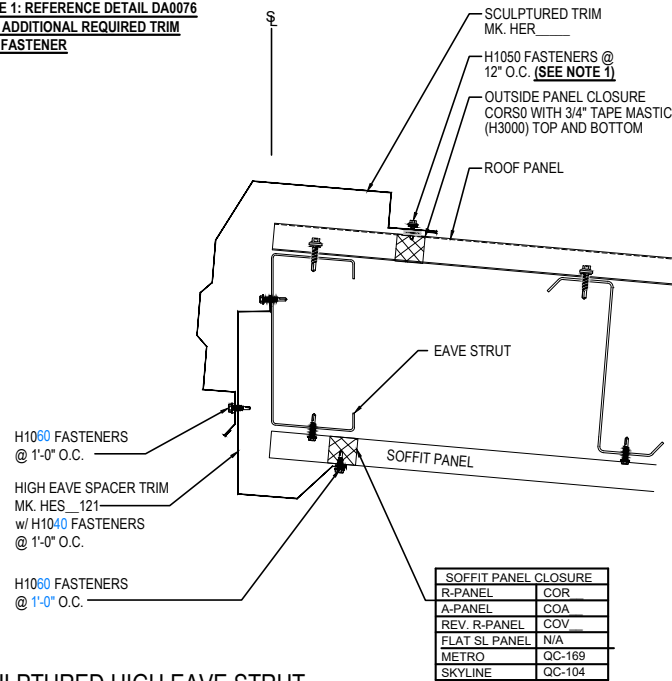
[Download the DWG file by clicking here.](#)

**HIGH EAVE LAP & FLASHING BACKER**

SLIDE FIELD CUT SECTION FLASHING ENDLAP BACKER ONTO THE LOWER TRIM PIECE. PLACE TAPE MASTIC NEXT TO HEM OF THE BACKER (NOT ON TOP OF HEM). APPLY CONTINUOUS BEAD OF CAULK 1" FROM END OF TRIM DOWN PROFILE OF TRIM. FASTEN LAP WITH STITCH FASTENERS AND POP RIVETS AS SHOWN.



**NOTE 1: REFERENCE DETAIL DA0076 FOR ADDITIONAL REQUIRED TRIM LAP FASTENER**



**SCULPTURED HIGH EAVE STRUT W/ OPEN WALL AND SOFFIT PANEL**  
R-PANEL ROOF

**DH0029**

**Detailer Notes:**

- 1) DETAIL CAN BE USED WITH PARTIALLY SHEETED WALLS AND FULLY OPEN WALLS.
- 2) DETAIL ONLY APPLIES TO THE MAIN BUILDING EAVE LINE. SEE EAVE/RAKE EXTENSION OR CANOPY SHEETING SECTIONS FOR OTHER SOFFIT/LINER CONFIGURATIONS.