

EAVE & RAKE EXTENSIONS

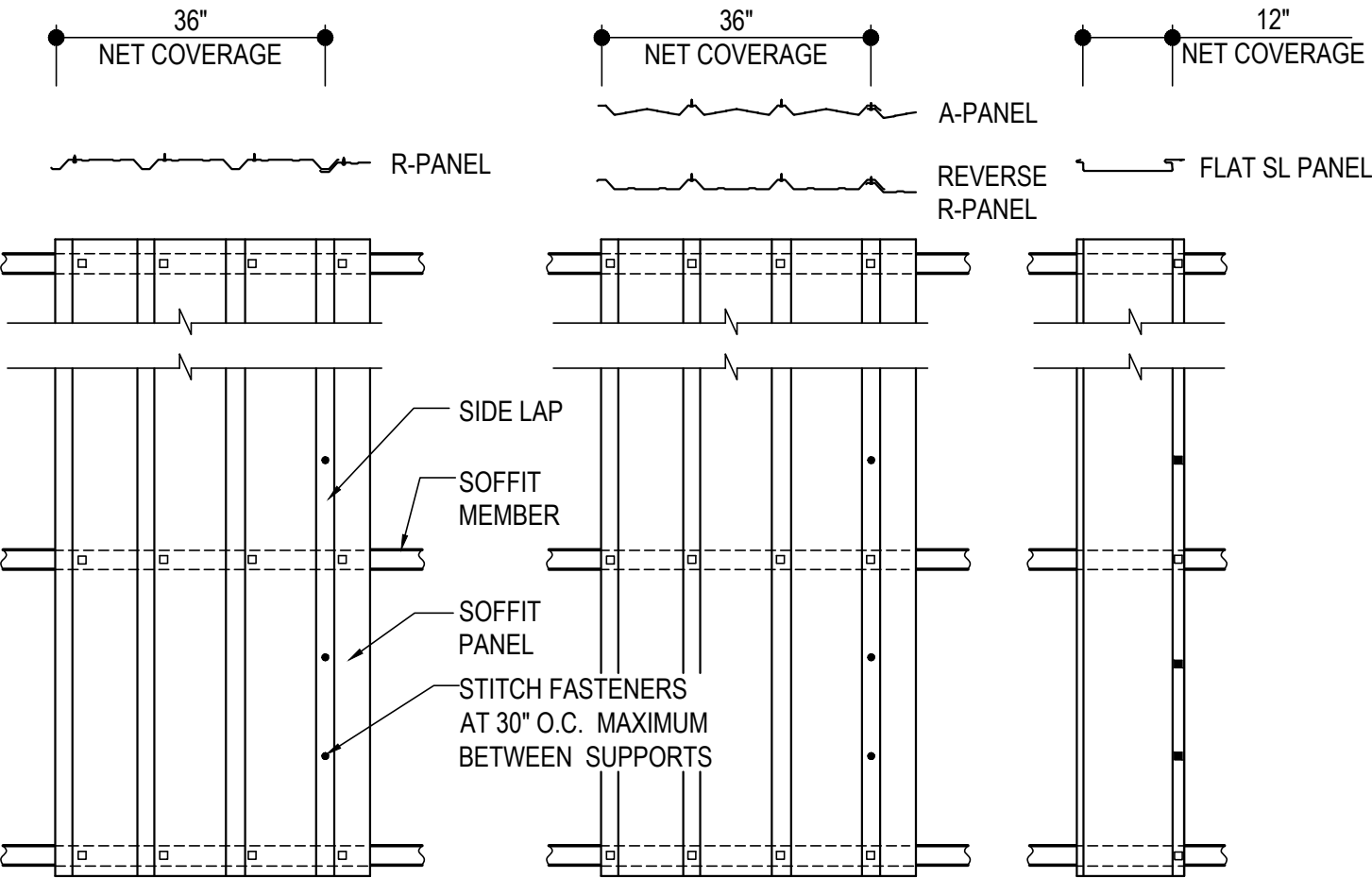
- DO0005 - SOFFIT PANEL ERECTION DETAIL
 - DO0007 - FLAT SL PANEL ATTACHMENT DETAIL
 - DO0010 - LOW EAVE EXTENSION
 - DO0214 - EAVE EXTENSION TERMINATION - INSET-FLUSH
 - DO0215 - EAVE EXTENSION TERMINATION - BYPASS
 - DO0308 - ABC - RAKE EXTENSION WITH FLAT SL PANEL SOFFIT
 - DO0310 - RAKE EXTENSION
 - DO0312 - RAKE EXTENSION TERMINATION - LOW EAVE
 - DO0314 - RAKE EXTENSION TERMINATION - HIGH EAVE
 - DO0410 - HIGH EAVE EXTENSION
 - DO0610 - SOFFIT PANEL ENDLAP
 - DO0615 - SOFFIT PANEL - RIDGE UP TO 1-12
 - DO0616 - SOFFIT PANEL - RIDGE GREATER THAN 1-12
-

DO0005 - SOFFIT PANEL ERECTION DETAIL

[Download the DWG file by clicking here.](#)

- H1060 STITCH FASTENER
- ▣ H1040 STRUCTURAL FASTENER
- NEGATIVE LOAD CLIP (MK. NLC-1)
(SEE FLAT SL PANEL ATTACHMENT DETAIL)

ERECTOR NOTE:
ERECTION OF THE SOFFIT PANEL MUST BE COORDINATED PROPERLY WITH THE SOFFIT TRIM CONDITIONS AS SHOWN IN THE ERECTION DETAILS. PLACEMENT AND ORIENTATION OF THE SOFFIT PANEL MAY VARY BY CONDITION AND SUPPORT MEMBERS MAY ALSO VARY. USE THIS FASTENING PATTERN UNLESS TRIM SECTION SHOWS A SPECIFIC PATTERN.



SOFFIT PANEL ERECTION DETAIL

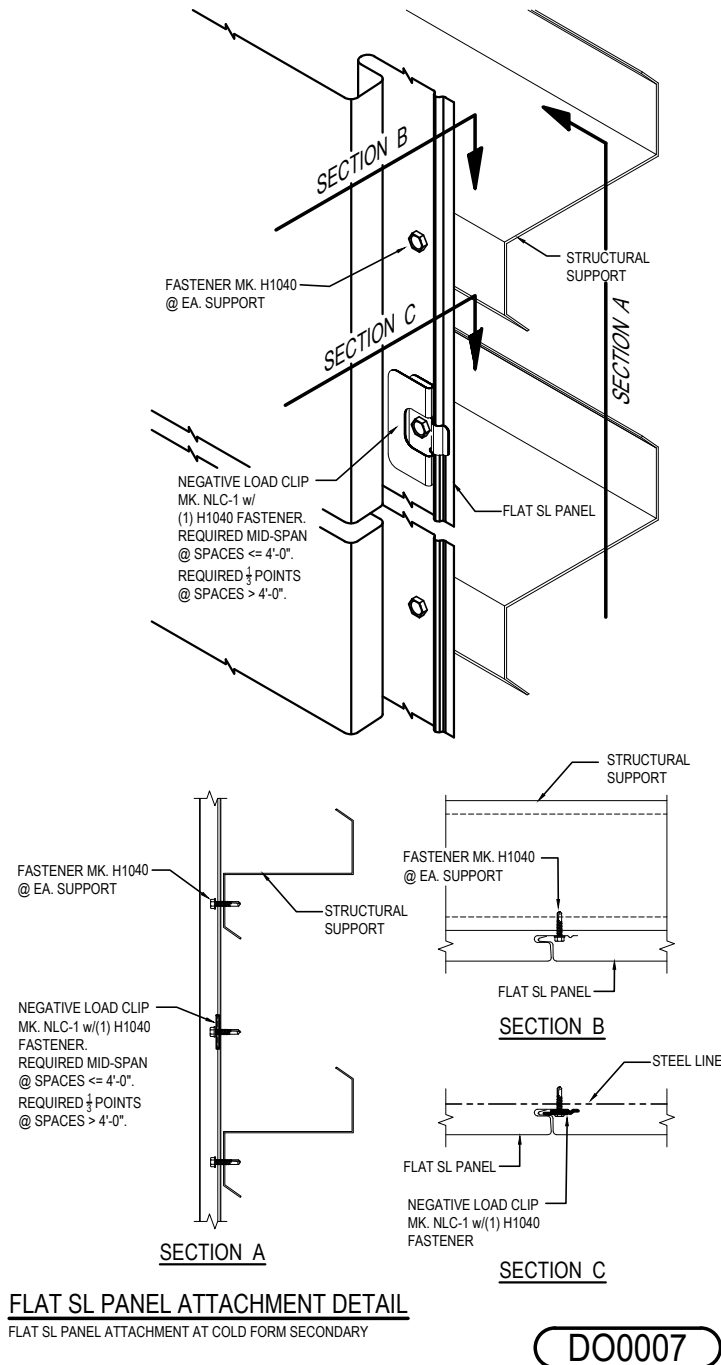
DO0005

Detailer Notes:

- 1) THIS DETAIL IS A DUPLICATE OF DQ0005, EO3005, EO6005, EQ3005, EQ6005, HK0005, & IK0005. DUPLICATE DETAILS ARE TO ENSURE THAT THEY ARE PLACED IN ORDER IN THE ERECTION DRAWINGS.

DO0007 - FLAT SL PANEL ATTACHMENT DETAIL

[Download the DWG file by clicking here.](#)



Detailer Notes:

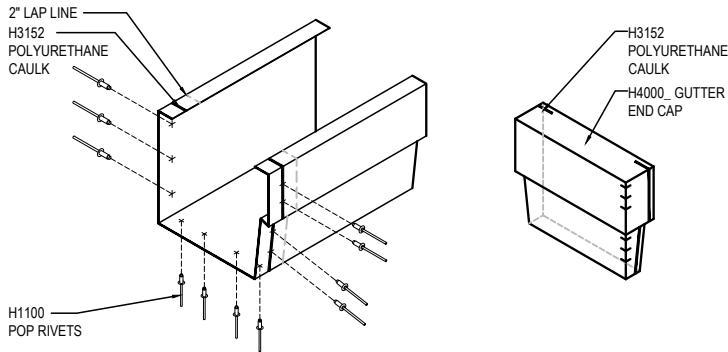
- 1) THIS DETAIL IS A DUPLICATE OF DQ0007, EO3007, EO6007, EQ3007, EQ6007, HK0007, & IK0007. DUPLICATE DETAILS ARE TO ENSURE THAT THEY ARE PLACED IN ORDER IN THE ERECTION DRAWINGS.

DO0010 - LOW EAVE EXTENSION

[Download the DWG file by clicking here.](#)

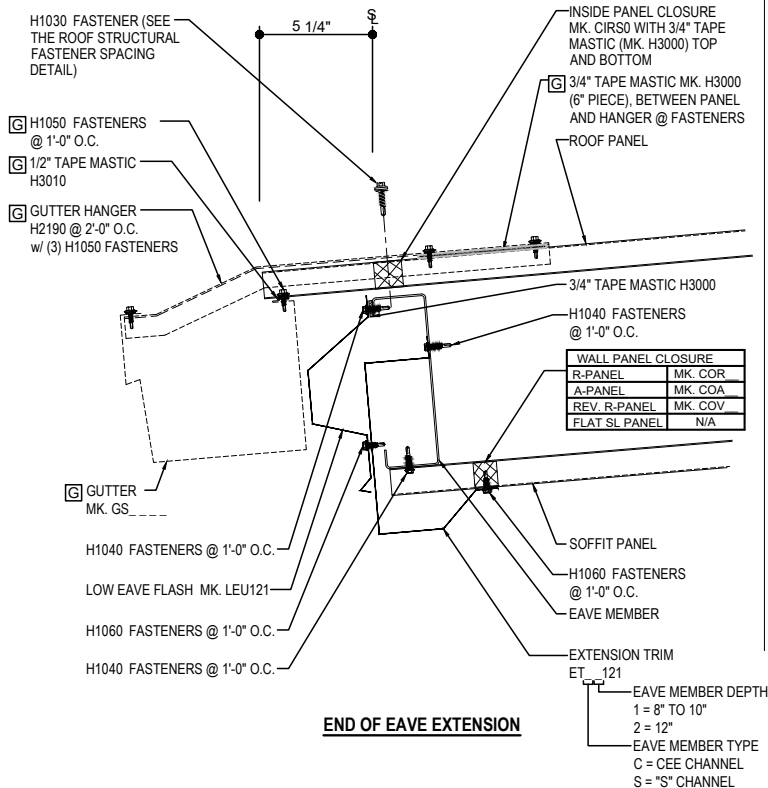
GUTTER LAP & END CAP

APPLY BEAD OF POLYURETHANE CAULK 1" FROM END OF TRIM AND LAP SECTIONS 2" AND FASTEN AS SHOWN. TO TERMINATE THE GUTTER APPLY POLYURETHANE CAULK TO THREE SIDES OF END CAP AND TOP RETURN AREA AS SHOWN AND INSERT 1/2" INTO END OF GUTTER. ATTACH WITH RIVETS SAME AS END LAP.

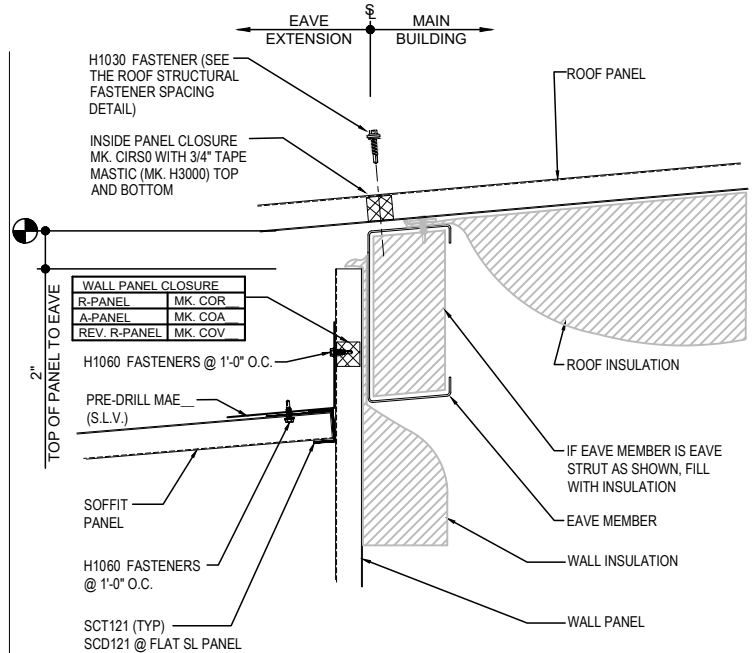


GUTTER SHOWN IF REQ'D

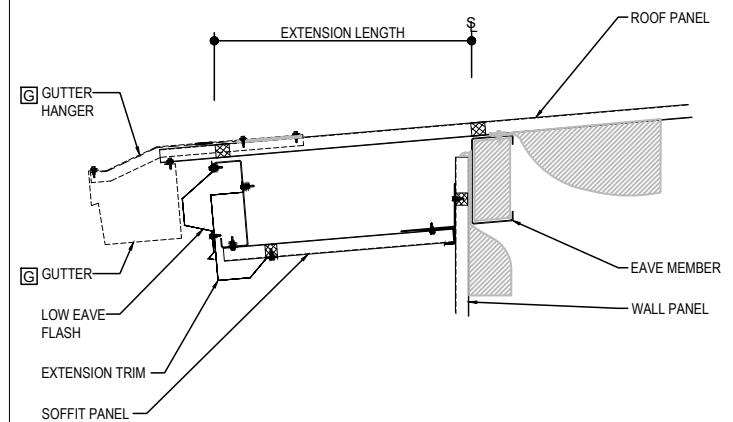
REQ'D ONLY
FOR GUTTER



END OF EAVE EXTENSION



EAVE EXTENSION SOFFIT AT BUILDING STEEL LINE



LOW EAVE EXTENSION

EAVE WITH OR WITHOUT GUTTER DETAIL w/ SOFFIT PANELS
SEE WALL SHEETING ERECTION NOTES FOR WALL PANEL FASTENER LOCATIONS

DO0010

Detailer Notes:

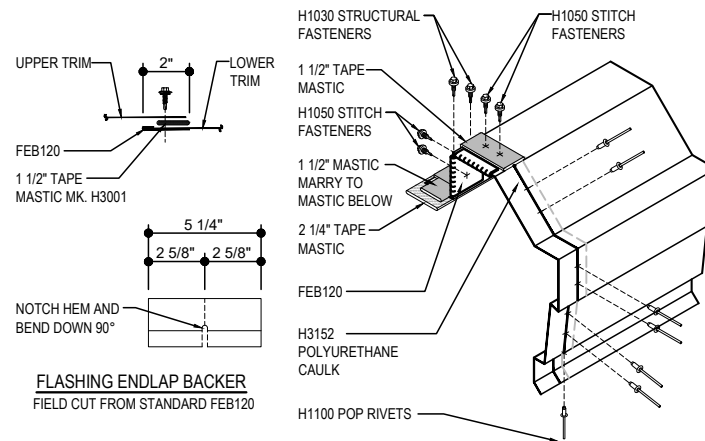
1) N/A

DO0214 - EAVE EXTENSION TERMINATION - INSET-FLUSH

[Download the DWG file by clicking here.](#)

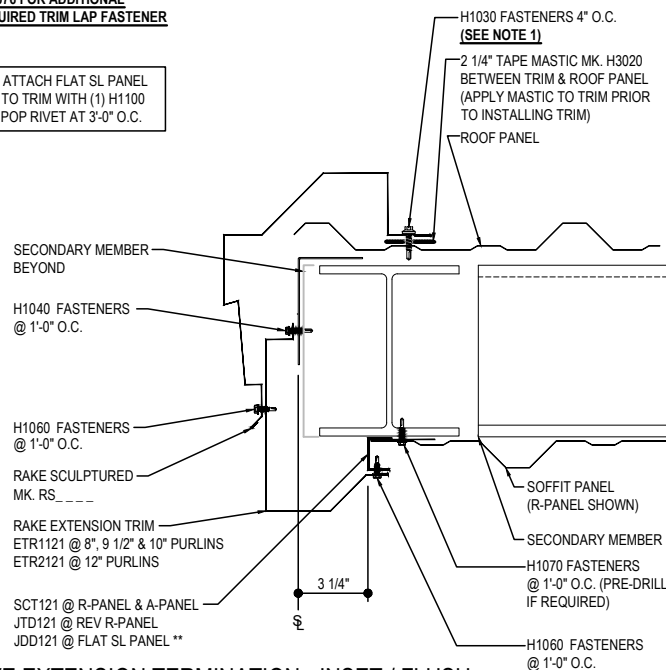
RAKE LAP & FLASHING BACKER

SLIDE FIELD CUT SECTION OF FLASHING ENDLAP BACKER ONTO THE LOWER TRIM PIECE AS SHOWN BELOW. PLACE TAPE MASTIC NEXT TO HEM OF THE BACKER (NOT ON TOP OF HEM). APPLY CONTINUOUS BEAD OF CAULK 1" FROM END OF TRIM DOWN PROFILE OF TRIM. FASTEN LAP WITH STITCH FASTENERS AND POP RIVETS AS SHOWN. ROOF STRUCTURAL FASTENERS SHOULD BE USED TO FASTEN THROUGH PANEL FLAT INTO RAKE ANGLE.



NOTE 1: REFERENCE DETAIL
DA0076 FOR ADDITIONAL
REQUIRED TRIM LAP FASTENER

**** ATTACH FLAT SL PANEL
TO TRIM WITH (1) H1100
POP RIVET AT 3'-0" O.C.**



EAVE EXTENSION TERMINATION - INSET / FLUSH

RAKE CONTINUATION AT EAVE EXTENSION

D00214

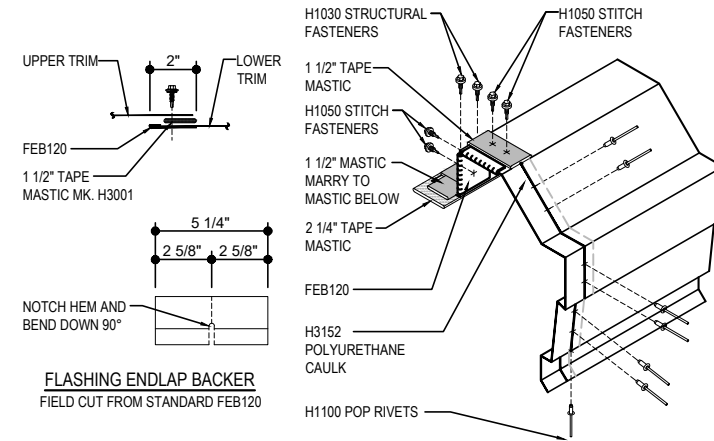
Detailer Notes:

DO0215 - EAVE EXTENSION TERMINATION - BYPASS

[Download the DWG file by clicking here.](#)

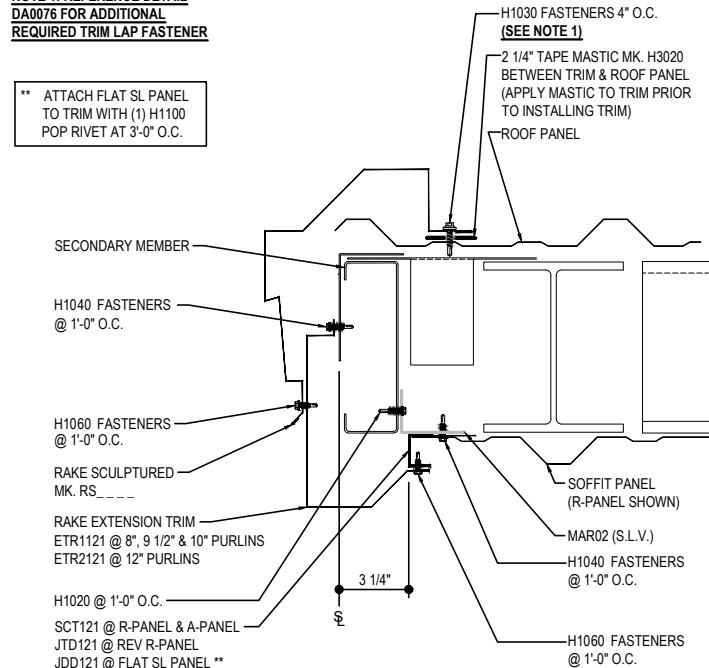
RAKE LAP & FLASHING BACKER

SLIDE FIELD CUT SECTION OF FLASHING ENDLAP BACKER ONTO THE LOWER TRIM PIECE AS SHOWN BELOW. PLACE TAPE MASTIC NEXT TO HEM OF THE BACKER (NOT ON TOP OF HEM). APPLY CONTINUOUS BEAD OF CAULK 1" FROM END OF TRIM DOWN PROFILE OF TRIM. FASTEN LAP WITH STITCH FASTENERS AND POP RIVETS AS SHOWN. ROOF STRUCTURAL FASTENERS SHOULD BE USED TO FASTEN THROUGH PANEL FLAT INTO RAKE ANGLE.



NOTE 1: REFERENCE DETAIL DA0076 FOR ADDITIONAL REQUIRED TRIM LAP FASTENER

** ATTACH FLAT SL PANEL TO TRIM WITH (1) H1100 POP RIVET AT 3'-0" O.C.



EAVE EXTENSION TERMINATION - BYPASS

RAKE CONTINUATION AT EAVE EXTENSION

DO0215

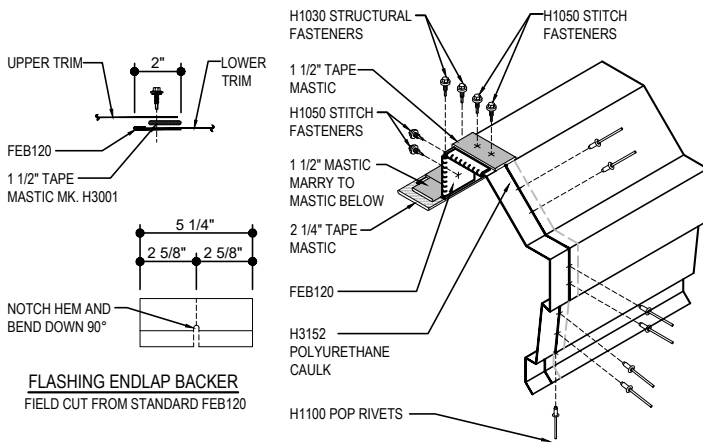
Detailer Notes:

DO0308 - RAKE EXTENSION WITH FLAT SL PANEL SOFFIT

[Download the DWG file by clicking here.](#)

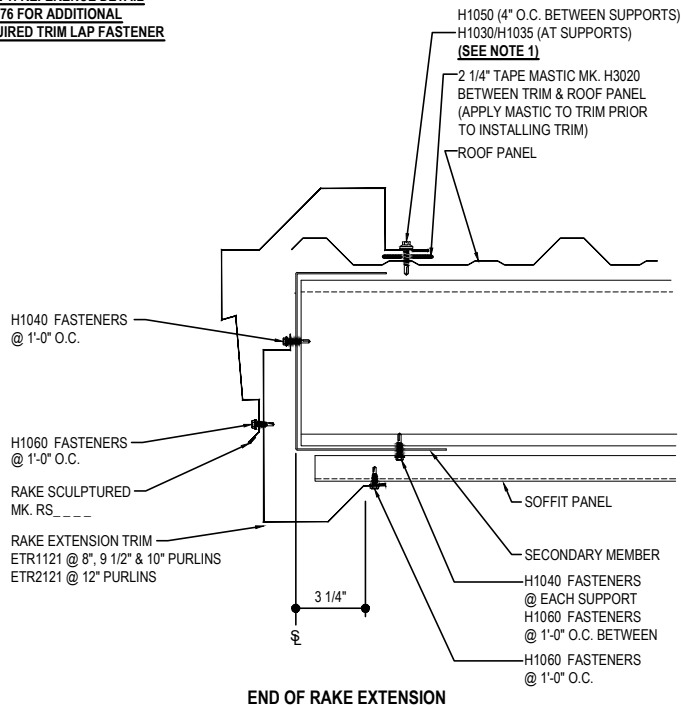
RAKE LAP & FLASHING BACKER

SLIDE FIELD CUT SECTION OF FLASHING ENLAP BACKER ONTO THE LOWER TRIM PIECE AS SHOWN BELOW. PLACE TAPE MASTIC NEXT TO HEM OF THE BACKER (NOT ON TOP OF HEM). APPLY CONTINUOUS BEAD OF CAULK 1" FROM END OF TRIM DOWN PROFILE OF TRIM. FASTEN LAP WITH STITCH FASTENERS AND POP RIVETS AS SHOWN. ROOF STRUCTURAL FASTENERS SHOULD BE USED TO FASTEN THROUGH PANEL FLAT INTO RAKE ANGLE.

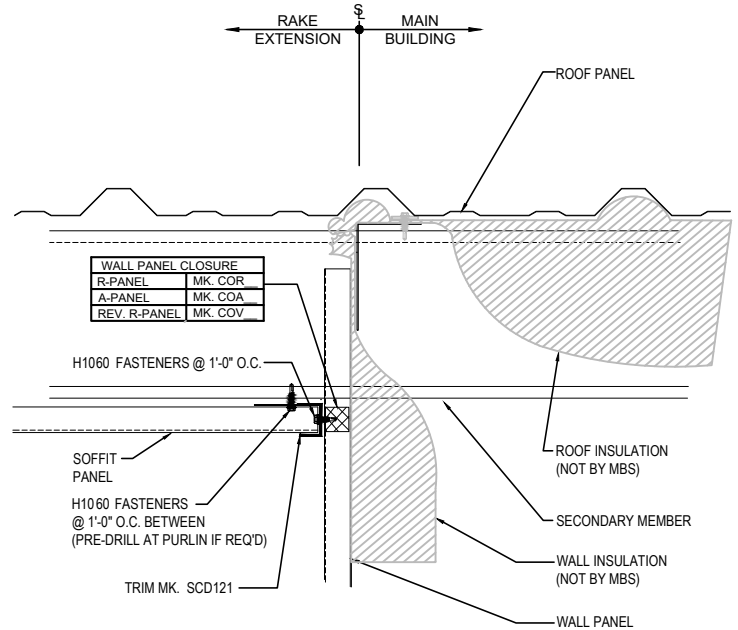


FLASHING ENLAP BACKER
FIELD CUT FROM STANDARD FEB120

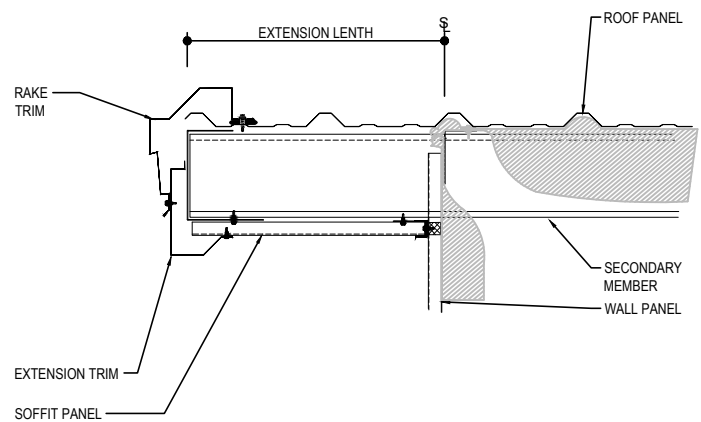
NOTE 1: REFERENCE DETAIL
DA0076 FOR ADDITIONAL
REQUIRED TRIM LAP FASTENER



END OF RAKE EXTENSION



RAKE EXTENSION SOFFIT AT BUILDING STEEL LINE



RAKE EXTENSION w / FLAT SL PANEL SOFFIT

RAKE DETAIL w / FLAT SL SOFFIT PANEL PERPENDICULAR TO WALL
SEE WALL SHEETING ERECTION NOTES FOR WALL PANEL FASTENER LOCATIONS

DO0308

Detailer Notes:

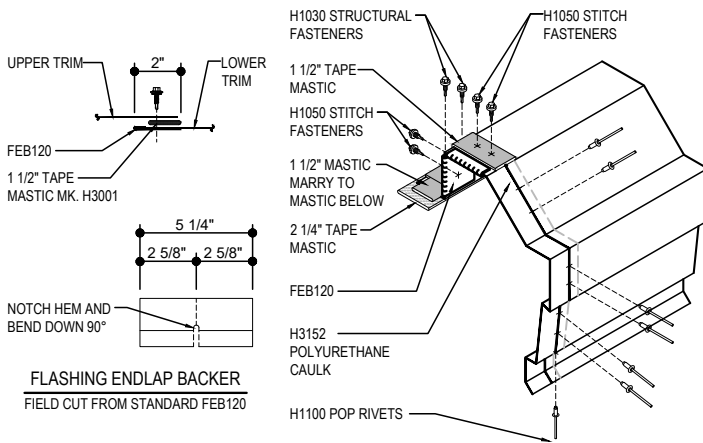
1) N/A

DO0310 - RAKE EXTENSION

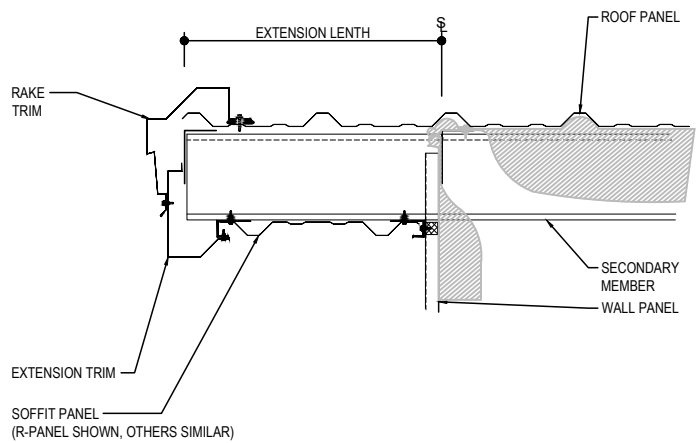
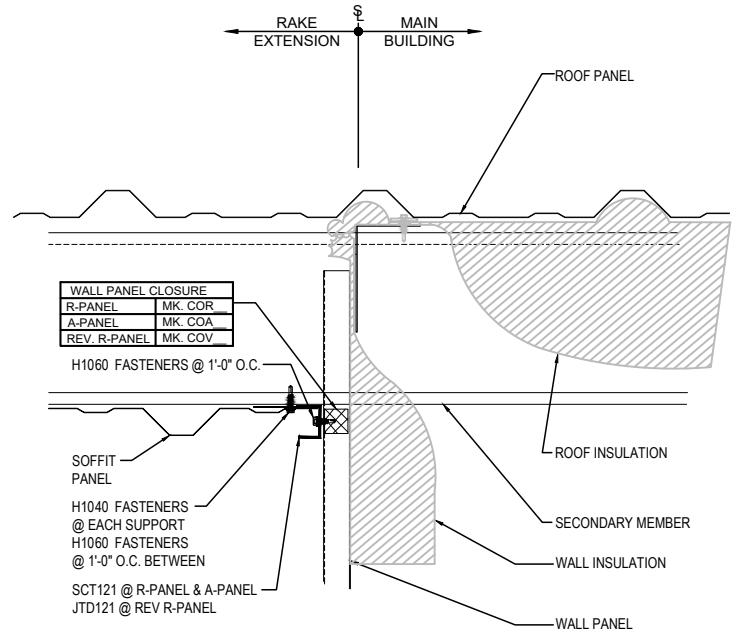
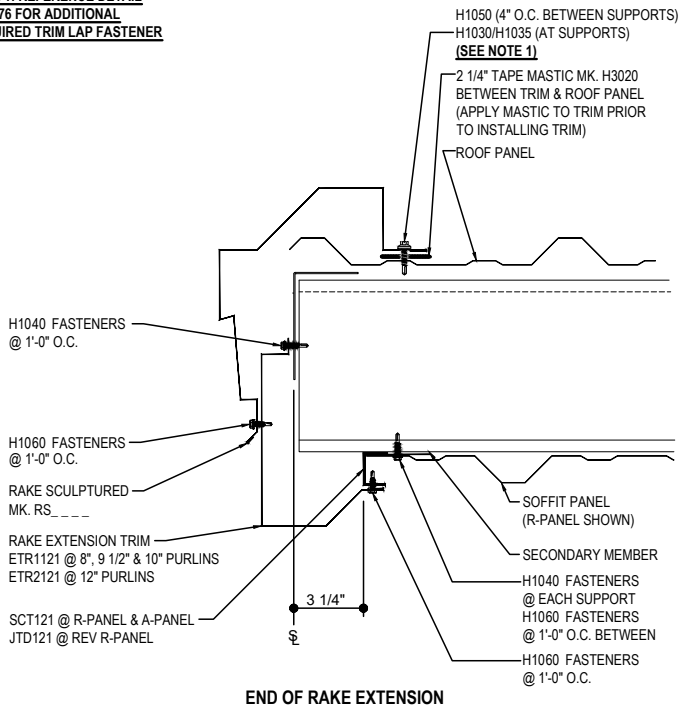
[Download the DWG file by clicking here.](#)

RAKE LAP & FLASHING BACKER

SLIDE FIELD CUT SECTION OF FLASHING ENLAP BACKER ONTO THE LOWER TRIM PIECE AS SHOWN BELOW. PLACE TAPE MASTIC NEXT TO HEM OF THE BACKER (NOT ON TOP OF HEM). APPLY CONTINUOUS BEAD OF CAULK 1" FROM END OF TRIM DOWN PROFILE OF TRIM. FASTEN LAP WITH STITCH FASTENERS AND POP RIVETS AS SHOWN. ROOF STRUCTURAL FASTENERS SHOULD BE USED TO FASTEN THROUGH PANEL FLAT INTO RAKE ANGLE.



NOTE 1: REFERENCE DETAIL
DA0076 FOR ADDITIONAL
REQUIRED TRIM LAP FASTENER



RAKE DETAIL w/ SOFFIT PANELS
SEE WALL SHEETING ERECTION NOTES FOR WALL PANEL FASTENER LOCATIONS

DO0310

Detailer Notes:

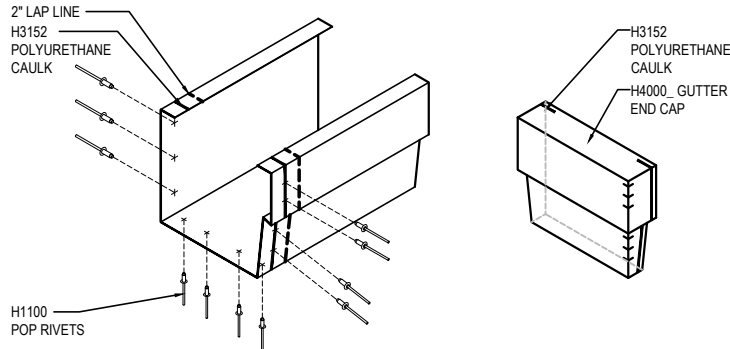
1) N/A

DO0312 - RAKE EXTENSION TERMINATION - LOW EAVE

[Download the DWG file by clicking here.](#)

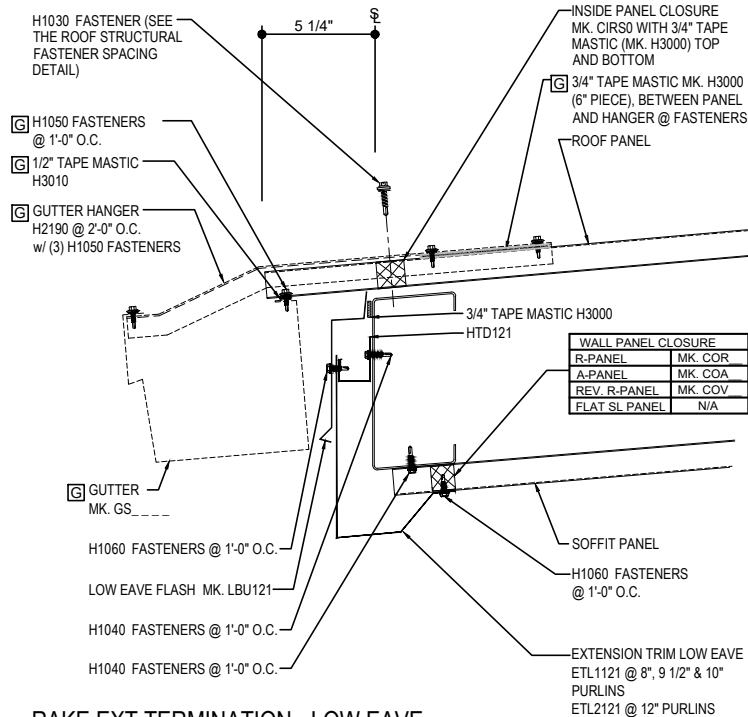
GUTTER LAP & END CAP

APPLY BEAD OF POLYURETHANE CAULK 1" FROM END OF TRIM AND LAP SECTIONS 2" AND FASTEN AS SHOWN. TO TERMINATE THE GUTTER APPLY POLYURETHANE CAULK TO THREE SIDES OF END CAP AND TOP RETURN AREA AS SHOWN AND INSERT 1/2" INTO END OF GUTTER. ATTACH WITH RIVETS SAME AS END LAP.



GUTTER SHOWN IF REQ'D

REQ'D ONLY
FOR GUTTER



RAKE EXT TERMINATION - LOW EAVE

EAVE WITH OR WITHOUT GUTTER CONTINUATION AT RAKE EXTENSION

DO0312

Detailer Notes:

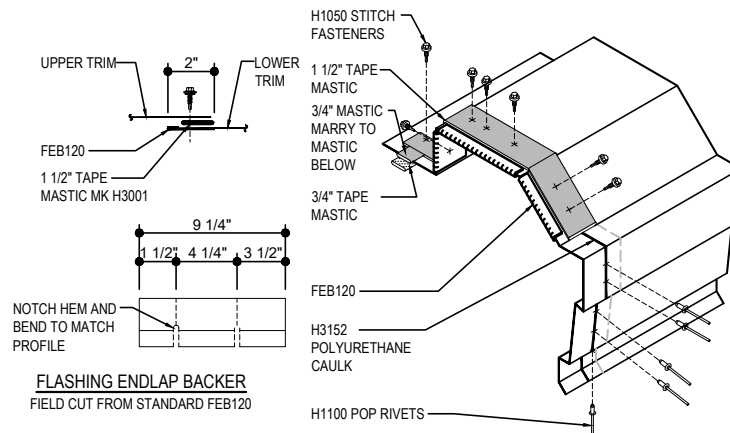
1) N/A

DO0314 - RAKE EXTENSION TERMINATION - HIGH EAVE

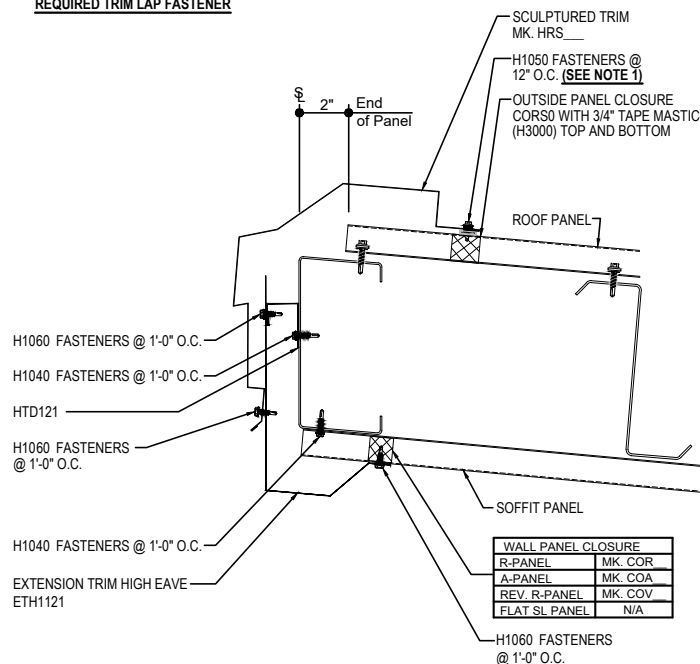
[Download the DWG file by clicking here.](#)

HIGH EAVE LAP & FLASHING BACKER

SLIDE FIELD CUT SECTION FLASHING ENDLAP BACKER ONTO THE LOWER TRIM PIECE. PLACE TAPE MASTIC NEXT TO HEM OF THE BACKER (NOT ON TOP OF HEM). APPLY CONTINUOUS BEAD OF CAULK 1" FROM END OF TRIM DOWN PROFILE OF TRIM. FASTEN LAP WITH STITCH FASTENERS AND POP RIVETS AS SHOWN.



NOTE 1: REFERENCE DETAIL DA0076 FOR ADDITIONAL REQUIRED TRIM LAP FASTENER



RAKE EXT TERMINATION - HIGH EAVE

HIGH EAVE CONTINUATION AT RAKE EXTENSION

DO0314

Detailer Notes:

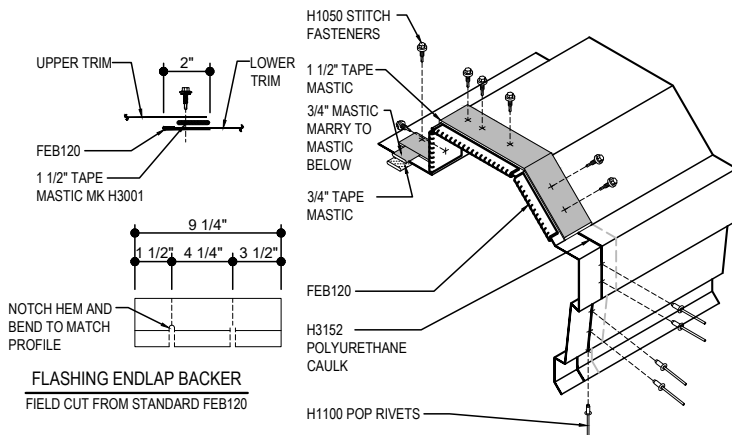
1) N/A

DO0410 - HIGH EAVE EXTENSION

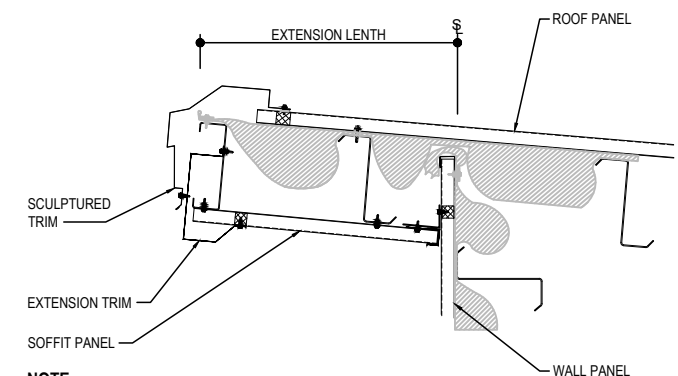
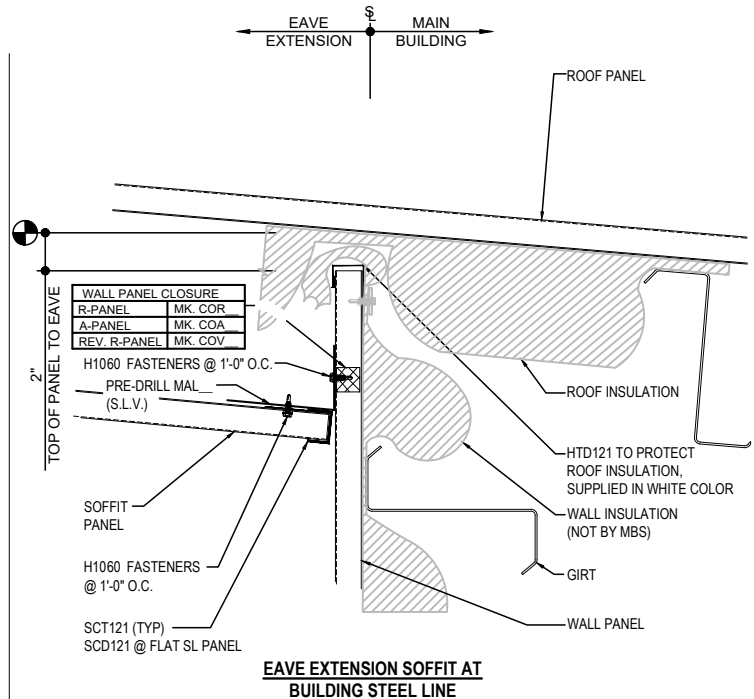
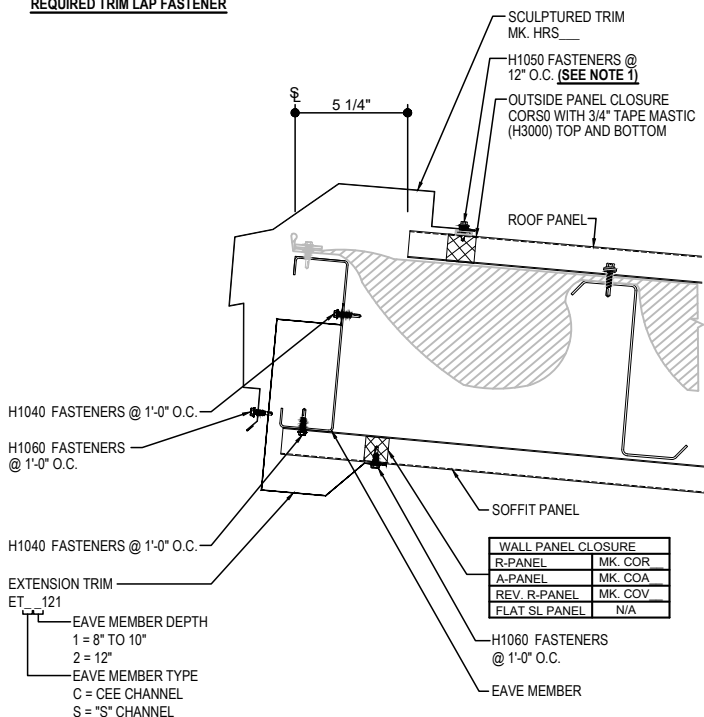
[Download the DWG file by clicking here.](#)

HIGH EAVE LAP & FLASHING BACKER

SLIDE FIELD CUT SECTION FLASHING ENDLAP BACKER ONTO THE LOWER TRIM PIECE. PLACE TAPE MASTIC NEXT TO HEM OF THE BACKER (NOT ON TOP OF HEM). APPLY CONTINUOUS BEAD OF CAULK 1" FROM END OF TRIM DOWN PROFILE OF TRIM. FASTEN LAP WITH STITCH FASTENERS AND POP RIVETS AS SHOWN.



NOTE 1: REFERENCE DETAIL
DA0076 FOR ADDITIONAL
REQUIRED TRIM LAP FASTENER



NOTE:
ROOF INSULATION NEEDS TO EXTEND OVER PURLINS TO PROVIDE SUPPORT UNDER PANEL AT PURLIN LOCATIONS. WALL INSULATION TERMINATION SHOWN IS A SUGGESTION BUT MAY VARY.

HIGH EAVE EXTENSION

HIGH EAVE DETAIL W/ SOFFIT PANELS
SEE WALL SHEETING ERECTION NOTES FOR WALL PANEL FASTENER LOCATIONS

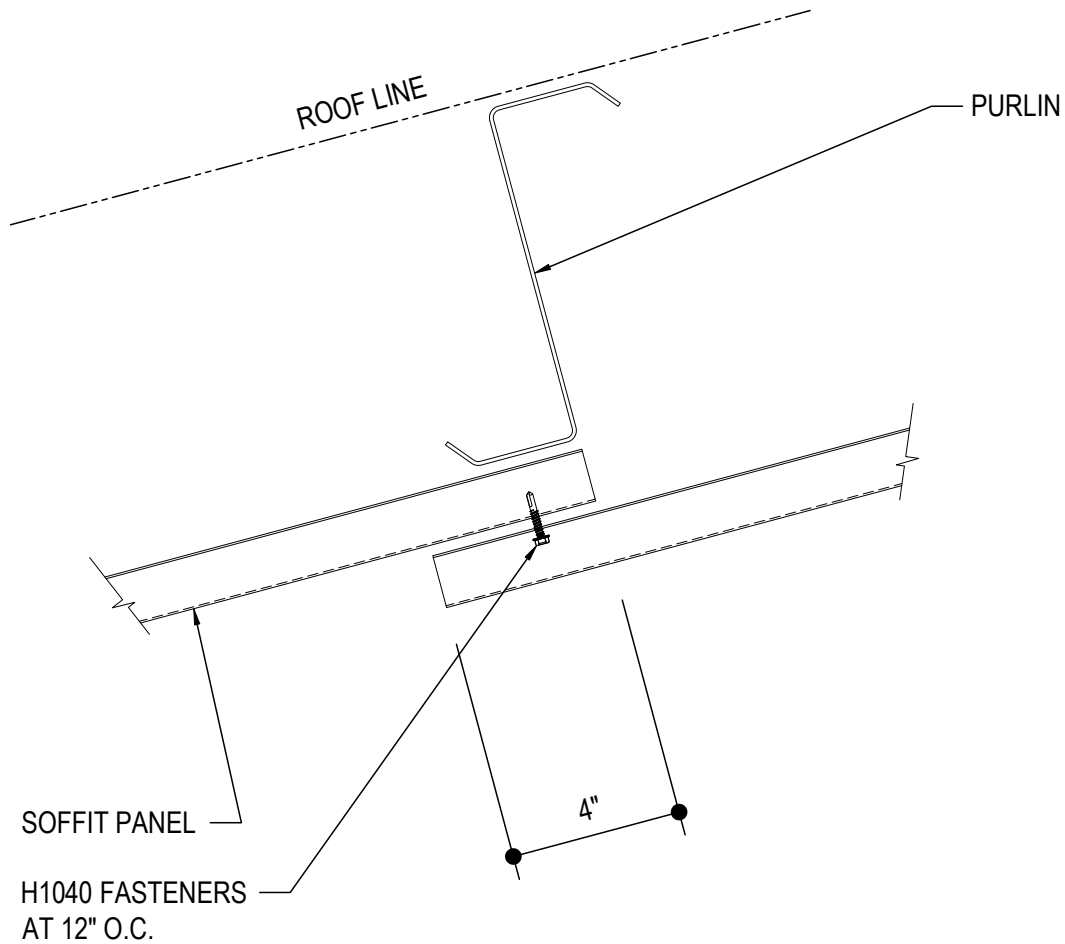
DO0410

Detailer Notes:

1) EXTENSIONS BETWEEN 1'-3" AND 1'-8" - PURLIN WILL INTERFERE WITH WALL PANEL AND DETAIL WILL HAVE TO BE MODIFIED TO ADJUST WALL PANEL SET DOWN TO KEEP PURLIN AT 1'-4" FROM STEEL LINE.

DO0610 - SOFFIT PANEL ENDLAP

[Download the DWG file by clicking here.](#)



SOFFIT PANEL ENDLAP

DO0610

Detailer Notes:

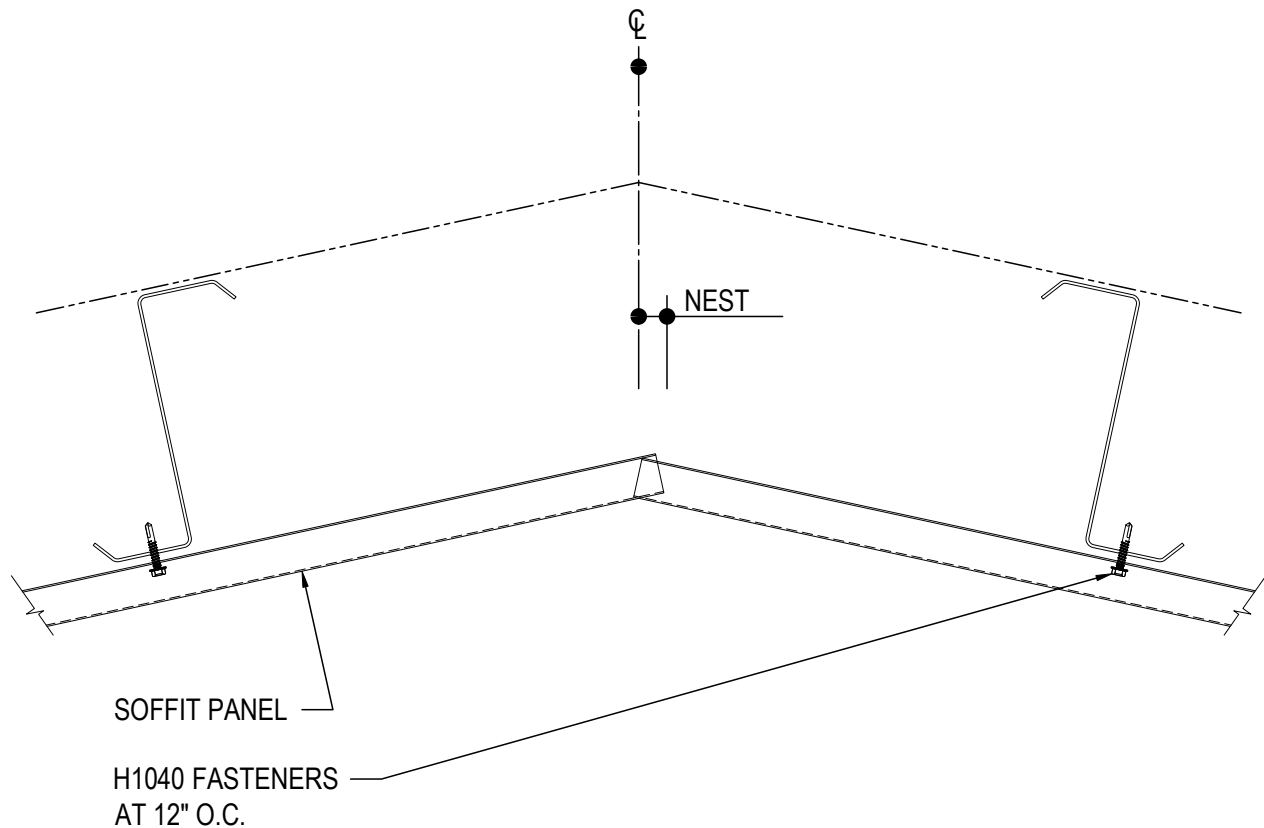
1) N/A

DO0615 - SOFFIT PANEL - RIDGE $\leq 1:12$

[Download the DWG file by clicking here.](#)

ERECTOR NOTE:

EXTEND THE PANEL PAST THE CENTERLINE OF THE RIDGE ON ONE SIDE OF THE RIDGE AS SHOWN. NEST THE OTHER PANEL INTO THE PROFILE.



SOFFIT PANEL RIDGE DETAIL

SOFFIT PANEL - SLOPES $\leq 1:12$
ALL STANDARD SOFFIT PANEL TYPES

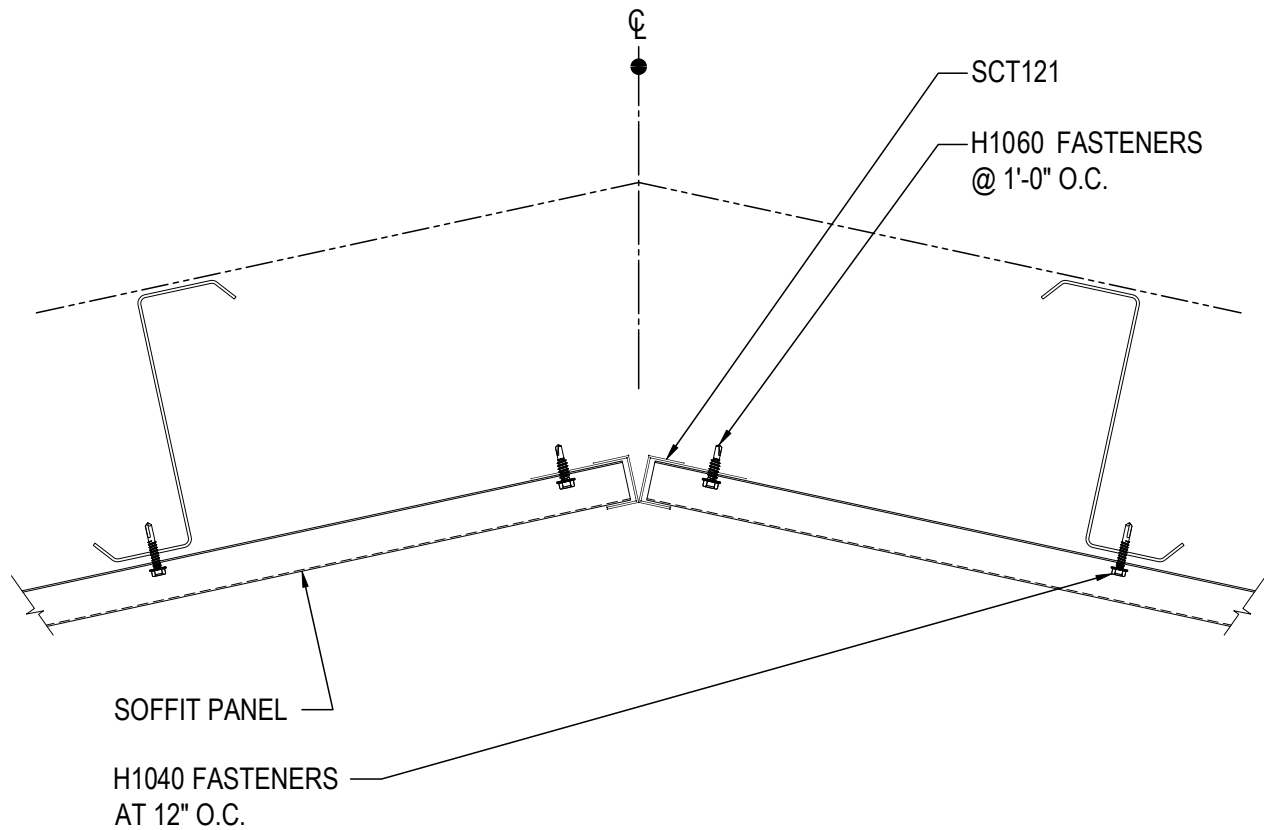
DO0615

Detailer Notes:

1) N/A

DO0616 - SOFFIT PANEL - RIDGE > 1:12

[Download the DWG file by clicking here.](#)



SOFFIT PANEL RIDGE DETAIL

SOFFIT PANEL - SLOPES >1:12
ALL STANDARD SOFFIT PANEL TYPES

DO0616

Detailer Notes:

1) N/A