

## CANOPY SHEETING

DQ0005 - SOFFIT PANEL ERECTION DETAIL

DO0007 - FLAT SL PANEL ATTACHMENT DETAIL

DQ0010 - LOW EAVE CANOPY - AT EAVE

DQ0110 - BELOW EAVE CANOPY

DQ0214 - CANOPY TERMINATION - INSET-FLUSH

DQ0215 - CANOPY TERMINATION - BYPASS

DQ0410 - HIGH EAVE CANOPY - AT EAVE

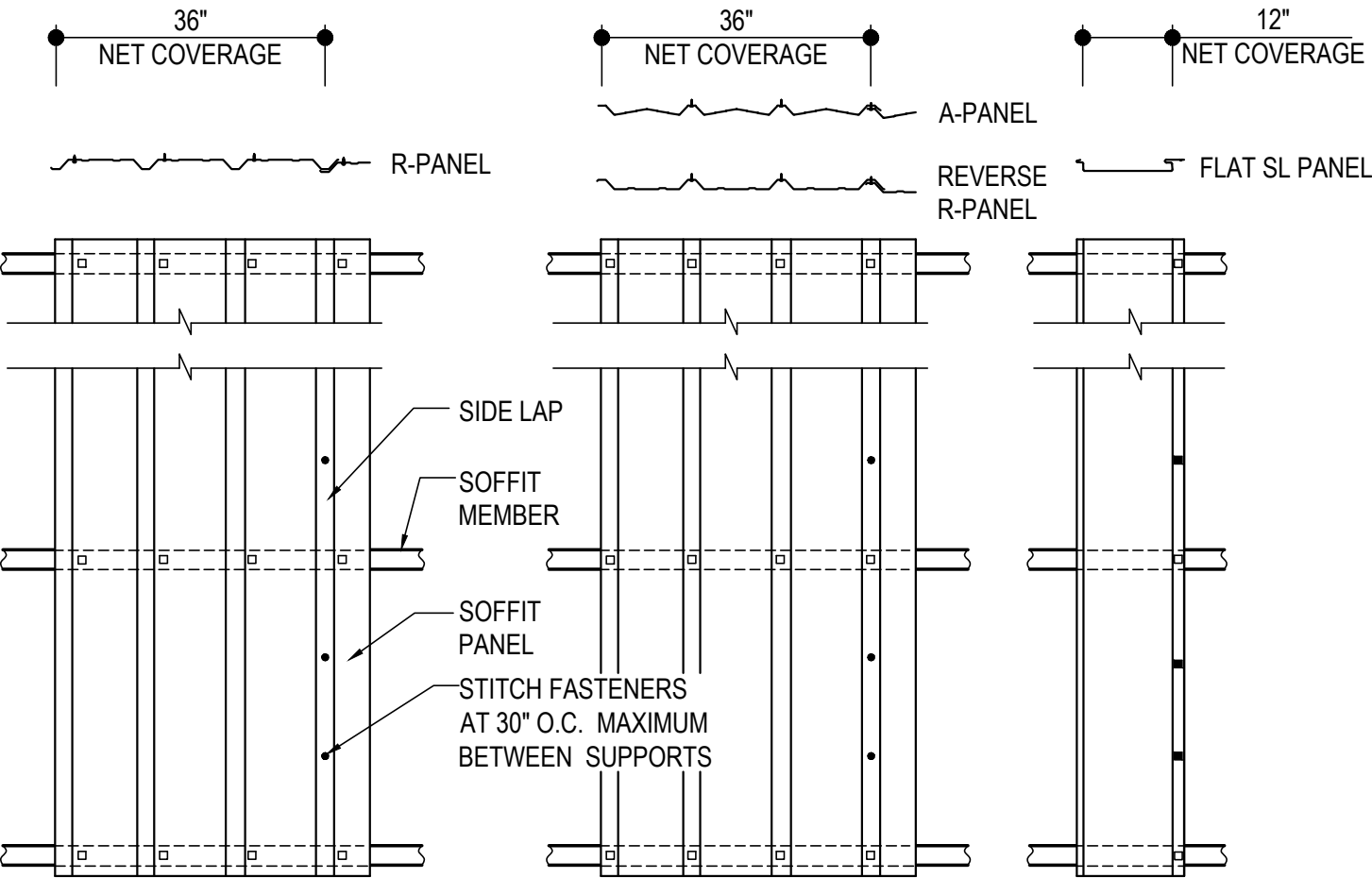
DQ0510 - CANOPY SOFFIT TERM AT BEAM

DQ0005 - SOFFIT PANEL ERECTION DETAIL

[Download the DWG file by clicking here.](#)

- H1060 STITCH FASTENER
- ▣ H1040 STRUCTURAL FASTENER
- NEGATIVE LOAD CLIP (MK. NLC-1)  
(SEE FLAT SL PANEL ATTACHMENT DETAIL)

**ERECTOR NOTE:**  
ERECTION OF THE SOFFIT PANEL MUST BE COORDINATED PROPERLY WITH THE SOFFIT TRIM CONDITIONS AS SHOWN IN THE ERECTION DETAILS. PLACEMENT AND ORIENTATION OF THE SOFFIT PANEL MAY VARY BY CONDITION AND SUPPORT MEMBERS MAY ALSO VARY. USE THIS FASTENING PATTERN UNLESS TRIM SECTION SHOWS A SPECIFIC PATTERN.



**SOFFIT PANEL ERECTION DETAIL**

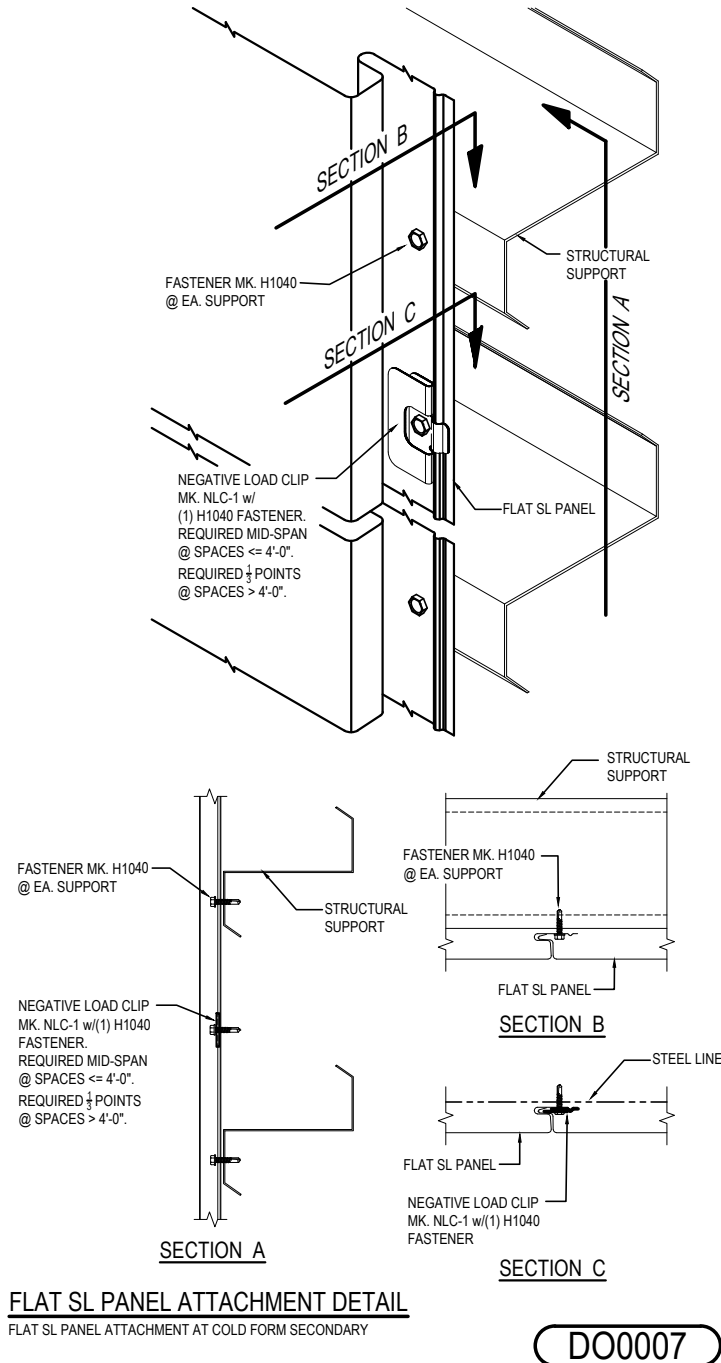
**DQ0005**

Detailer Notes:

- 1) THIS DETAIL IS A DUPLICATE OF DO0005, EO3005, EO6005, EQ3005, EQ6005, HK0005, & IK0005. DUPLICATE DETAILS ARE TO ENSURE THAT THEY ARE PLACED IN ORDER IN THE ERECTION DRAWINGS.

## DO0007 - FLAT SL PANEL ATTACHMENT DETAIL

[Download the DWG file by clicking here.](#)



### Detailer Notes:

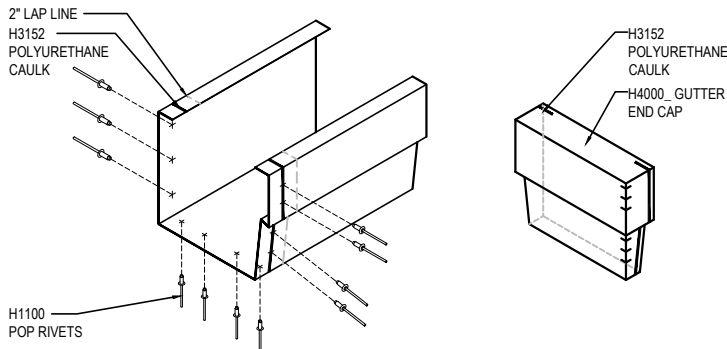
- 1) THIS DETAIL IS A DUPLICATE OF DQ0007, EO3007, EO6007, EQ3007, EQ6007, HK0007, & IK0007. DUPLICATE DETAILS ARE TO ENSURE THAT THEY ARE PLACED IN ORDER IN THE ERECTION DRAWINGS.

## DQ0010 - LOW EAVE CANOPY - AT EAVE

[Download the DWG file by clicking here.](#)

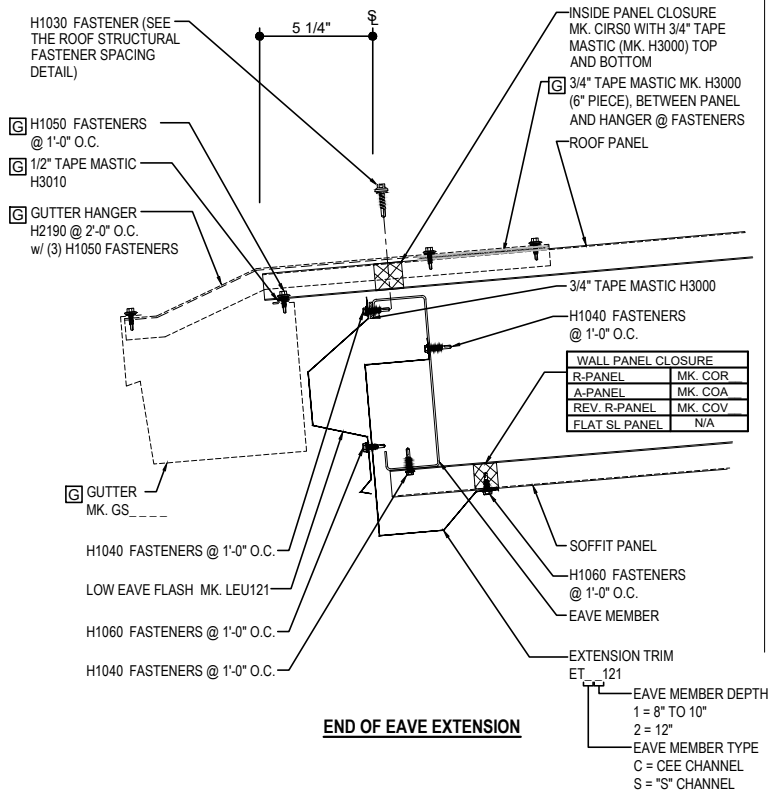
### GUTTER LAP & END CAP

APPLY BEAD OF POLYURETHANE CAULK 1" FROM END OF TRIM AND LAP SECTIONS 2" AND FASTEN AS SHOWN. TO TERMINATE THE GUTTER APPLY POLYURETHANE CAULK TO THREE SIDES OF END CAP AND TOP RETURN AREA AS SHOWN AND INSERT 1/2" INTO END OF GUTTER. ATTACH WITH RIVETS SAME AS END LAP.



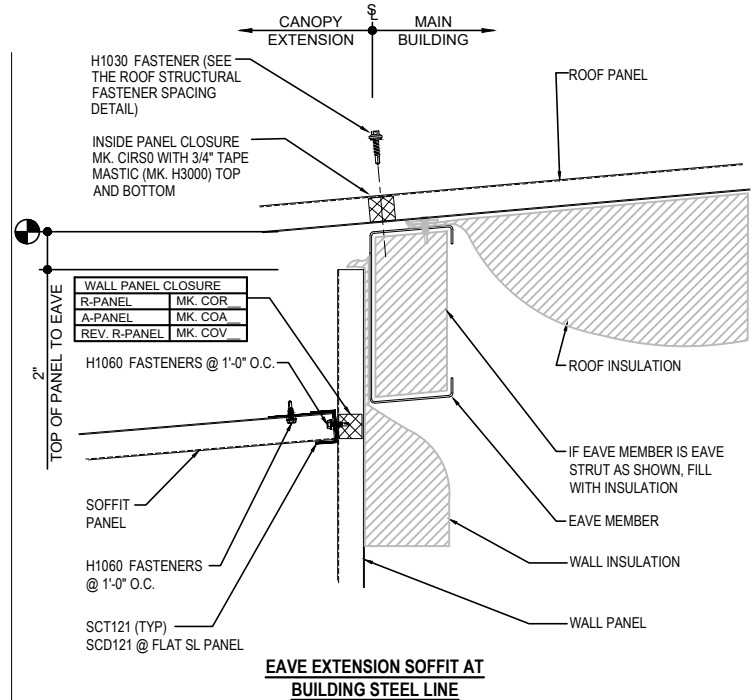
### GUTTER SHOWN IF REQ'D

REQ'D ONLY  
FOR GUTTER

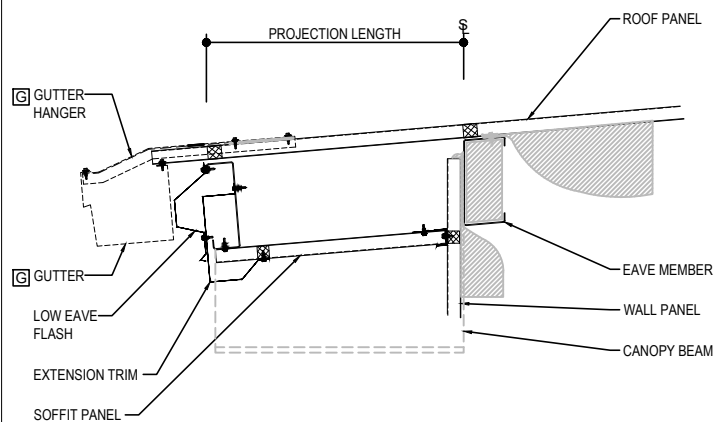


### END OF EAVE EXTENSION

EAVE MEMBER DEPTH  
1 = 8" TO 10"  
2 = 12"  
EAVE MEMBER TYPE  
C = CEE CHANNEL  
S = "S" CHANNEL



### EAVE EXTENSION SOFFIT AT BUILDING STEEL LINE



### LOW EAVE CANOPY - AT EAVE

EAVE WITH OR WITHOUT GUTTER DETAIL W/ SOFFIT PANELS  
SEE WALL SHEETING ERECTION NOTES FOR WALL PANEL FASTENER LOCATIONS

DQ0010

### Detailer Notes:

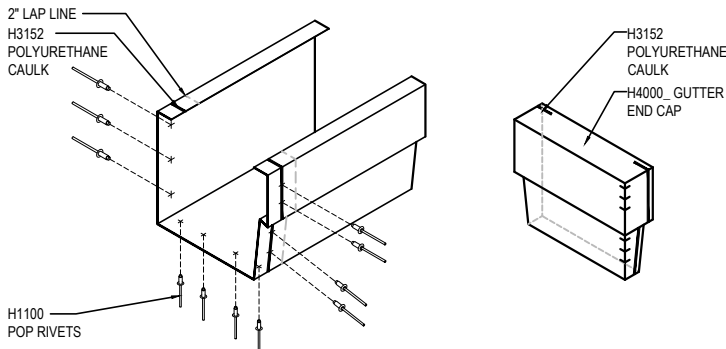
1) N/A

## DQ0110 - BELOW EAVE CANOPY

[Download the DWG file by clicking here.](#)

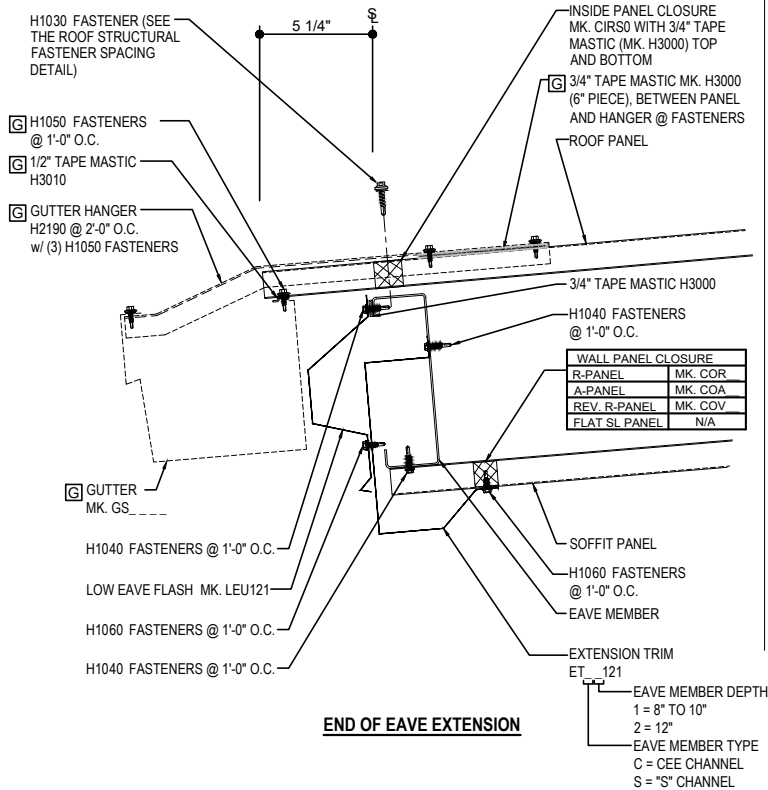
### GUTTER LAP & END CAP

APPLY BEAD OF POLYURETHANE CAULK 1" FROM END OF TRIM AND LAP SECTIONS 2" AND FASTEN AS SHOWN. TO TERMINATE THE GUTTER APPLY POLYURETHANE CAULK TO THREE SIDES OF END CAP AND TOP RETURN AREA AS SHOWN AND INSERT 1/2" INTO END OF GUTTER. ATTACH WITH RIVETS SAME AS END LAP.



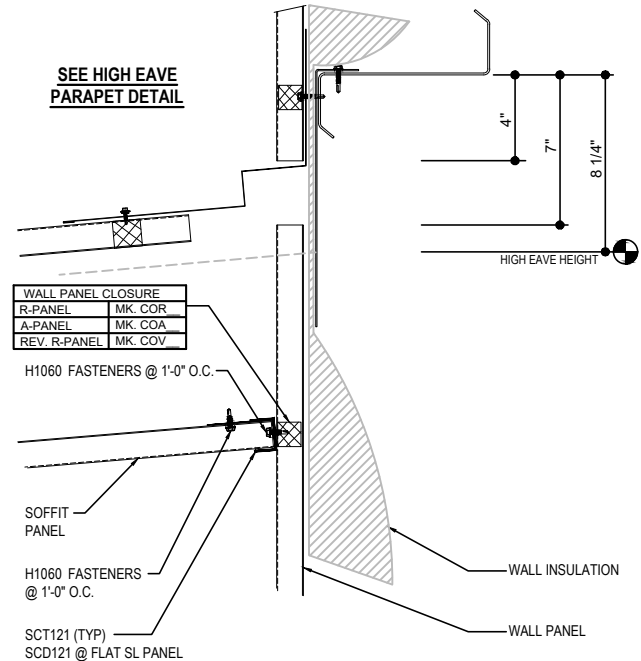
### GUTTER SHOWN IF REQ'D

REQ'D ONLY  
FOR GUTTER

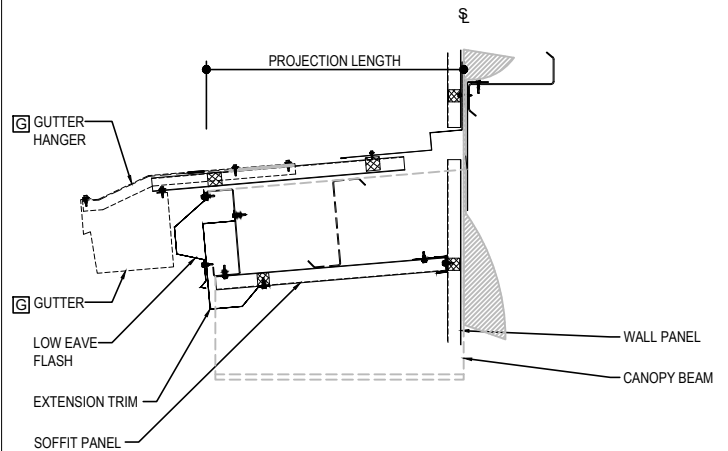


### END OF EAVE EXTENSION

### SEE HIGH EAVE PARAPET DETAIL



### EAVE EXTENSION SOFFIT AT BUILDING STEEL LINE



### BELOW EAVE CANOPY

EAVE WITH OR WITHOUT GUTTER DETAIL w/ SOFFIT PANELS  
SEE WALL SHEETING ERECTION NOTES FOR WALL PANEL FASTENER LOCATIONS

**DQ0110**

### Detailer Notes:

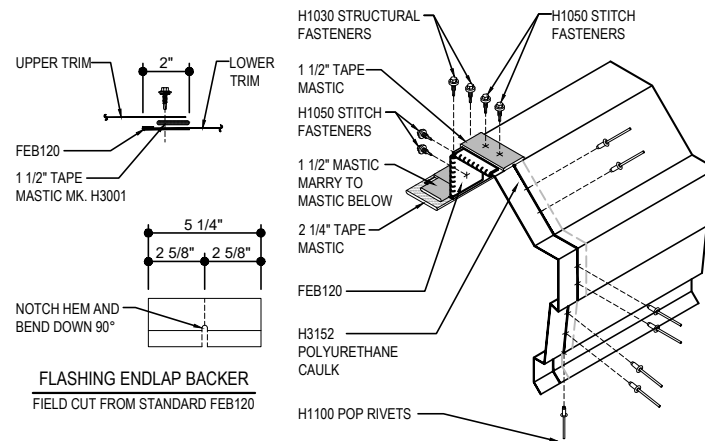
1) N/A

## DQ0214 - CANOPY TERMINATION - INSET-FLUSH

[Download the DWG file by clicking here.](#)

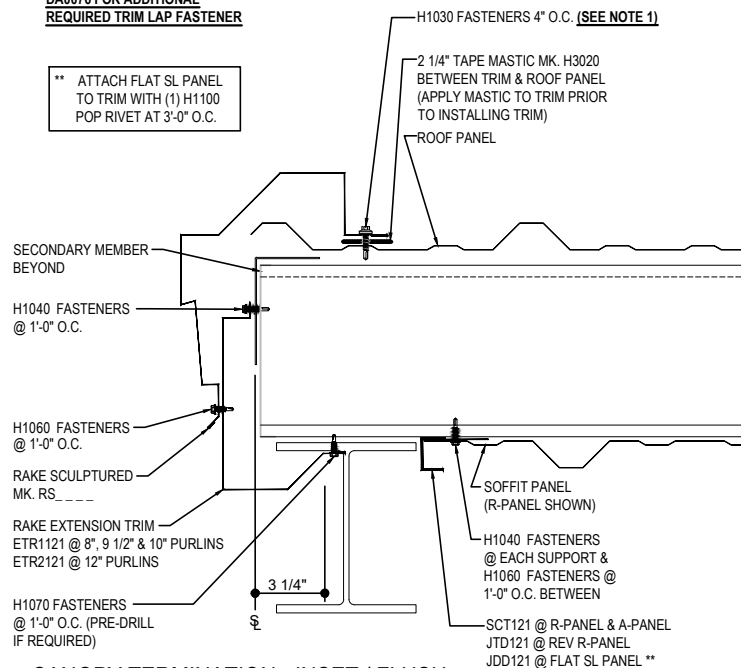
## RAKE LAP &amp; FLASHING BACKER

SLIDE FIELD CUT SECTION OF FLASHING ENDLAP BACKER ONTO THE LOWER TRIM PIECE AS SHOWN BELOW. PLACE TAPE MASTIC NEXT TO HEM OF THE BACKER (NOT ON TOP OF HEM). APPLY CONTINUOUS BEAD OF CAULK 1" FROM END OF TRIM DOWN PROFILE OF TRIM. FASTEN LAP WITH STITCH FASTENERS AND POP RIVETS AS SHOWN. ROOF STRUCTURAL FASTENERS SHOULD BE USED TO FASTEN THROUGH PANEL FLAT INTO RAKE ANGLE.



**NOTE 1: REFERENCE DETAIL**  
**DA0076 FOR ADDITIONAL**  
**REQUIRED TRIM LAP FASTENER**

**\*\* ATTACH FLAT SL PANEL  
TO TRIM WITH (1) H1100  
POP RIVET AT 3'-0" O.C.**



## CANOPY TERMINATION - INSET / FLUSH

RAKE AT CANOPY TERMINATION

DQ0214

## Detailer Notes:

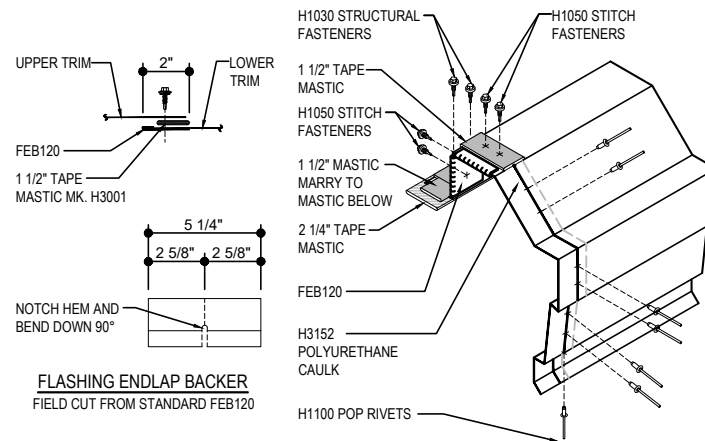
- 1) USE THIS DETAIL WITH FLUSH OR INSET ENDWALL CONDITIONS.

## DO0215 - EAVE EXTENSION TERMINATION - BYPASS

[Download the DWG file by clicking here.](#)

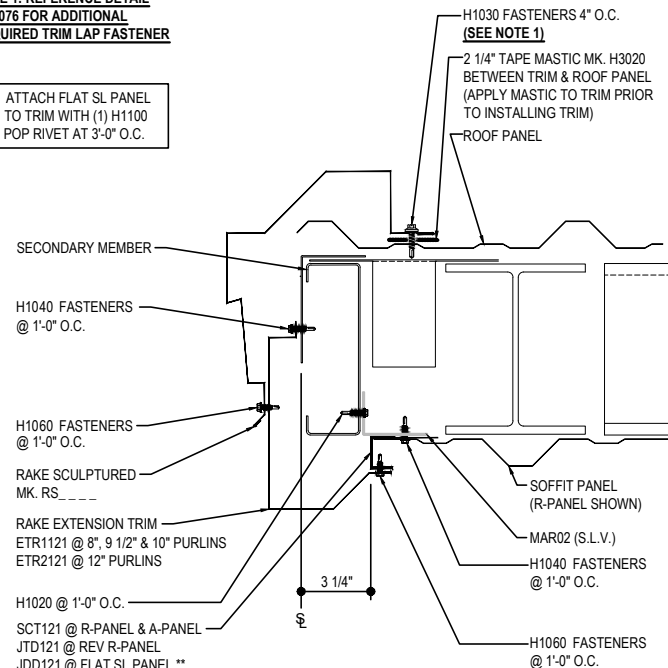
### RAKE LAP & FLASHING BACKER

SLIDE FIELD CUT SECTION OF FLASHING ENDLAP BACKER ONTO THE LOWER TRIM PIECE AS SHOWN BELOW. PLACE TAPE MASTIC NEXT TO HEM OF THE BACKER (NOT ON TOP OF HEM). APPLY CONTINUOUS BEAD OF CAULK 1" FROM END OF TRIM DOWN PROFILE OF TRIM. FASTEN LAP WITH STITCH FASTENERS AND POP RIVETS AS SHOWN. ROOF STRUCTURAL FASTENERS SHOULD BE USED TO FASTEN THROUGH PANEL FLAT INTO RAKE ANGLE.



**NOTE 1: REFERENCE DETAIL**  
**DA0076 FOR ADDITIONAL**  
**REQUIRED TRIM LAP FASTENER**

\*\* ATTACH FLAT SL PANEL  
TO TRIM WITH (1) H1100  
POP RIVET AT 3'-0" O.C.



## EAVE EXTENSION TERMINATION - BYPASS

RAKE CONTINUATION AT EAVE EXTENSION

DO0215

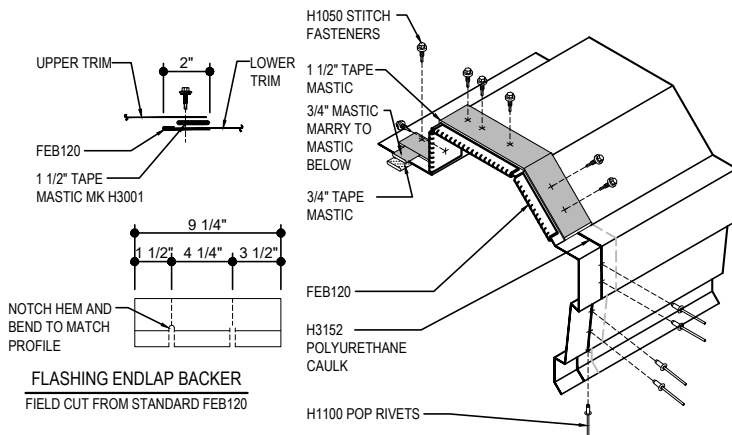
## Detailer Notes:

## DQ0410 - HIGH EAVE CANOPY - AT EAVE

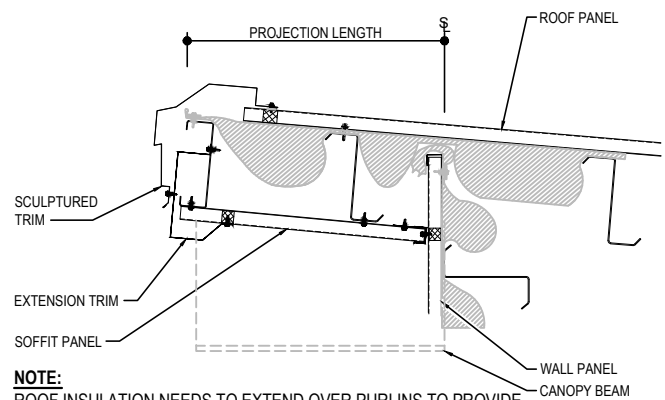
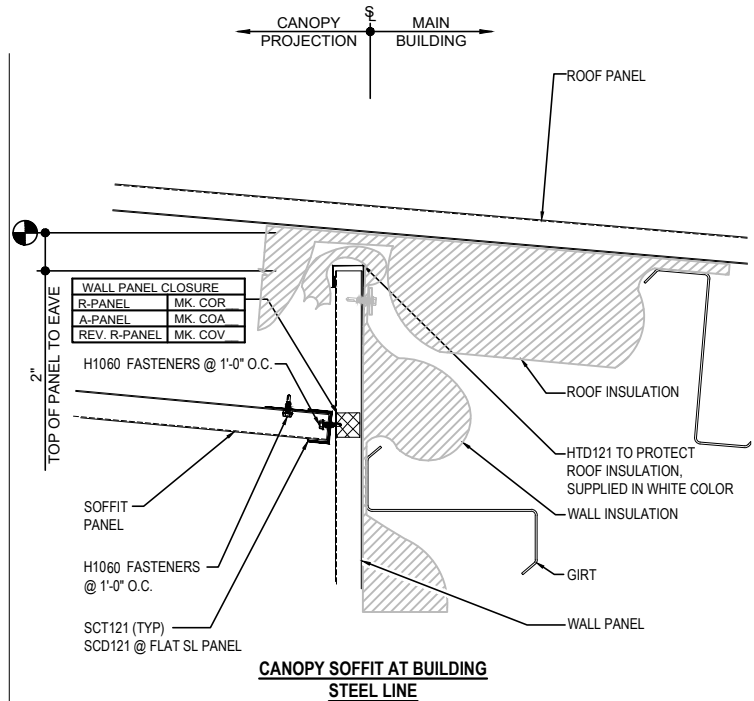
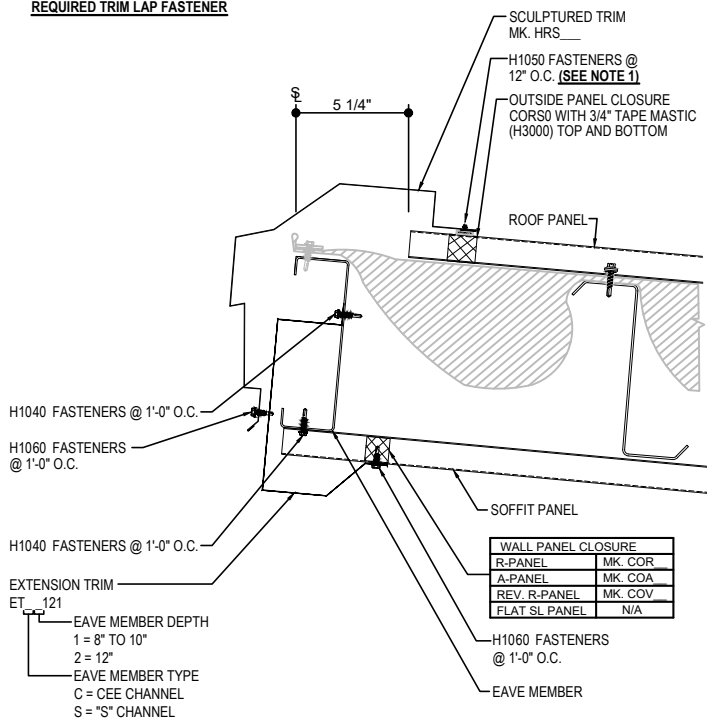
[Download the DWG file by clicking here.](#)

## HIGH EAVE LAP & FLASHING BACKER

SLIDE FIELD CUT SECTION FLASHING ENDLAP BACKER ONTO THE LOWER TRIM PIECE. PLACE TAPE MASTIC NEXT TO HEM OF THE BACKER (NOT ON TOP OF HEM). APPLY CONTINUOUS BEAD OF CAULK 1" FROM END OF TRIM DOWN PROFILE OF TRIM. FASTEN LAP WITH STITCH FASTENERS AND POP RIVETS AS SHOWN.



**NOTE 1: REFERENCE DETAIL**  
**DA0076 FOR ADDITIONAL**  
**REQUIRED TRIM LAP FASTENER**



**NOTE:**  
ROOF INSULATION NEEDS TO EXTEND OVER PURLINS TO PROVIDE  
SUPPORT UNDER PANEL AT PURLIN LOCATIONS. WALL INSULATION  
TERMINATION SHOWN IS A SUGGESTION BUT MAY VARY.

## HIGH EAVE CANOPY - AT EAVE

HIGH EAVE DETAIL w/ SOFFIT PANELS  
SEE WALL SHEETING ERECTION NOTES FOR WALL PANEL FASTENER LOCATIONS

DQ0410

**Detailer Notes:**

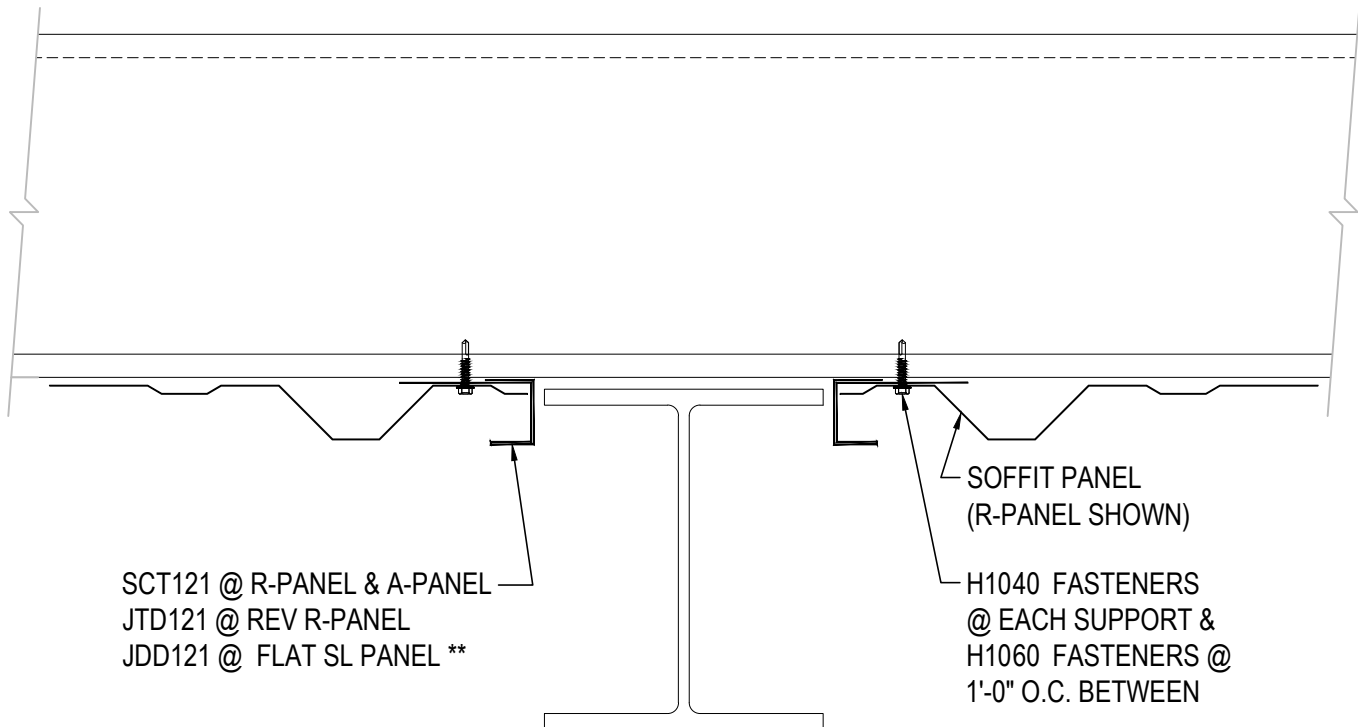
1) N/A



DQ0510 - CANOPY SOFFIT TERMINATION AT BEAM

[Download the DWG file by clicking here.](#)

\*\* ATTACH FLAT SL PANEL  
TO TRIM WITH (1) H1100  
POP RIVET AT 3'-0" O.C.



CANOPY SOFFIT TERMINATION AT BEAM

SEE SOFFIT PANEL ERECTION NOTE FOR SOFFIT PANEL FASTENER LOCATIONS

DQ0510

Detailer Notes:

1) THIS DETAIL IS DUPLICATE OF EQ3510 & EQ6510. DUPLICATE DETAILS ARE TO ENSURE THAT THEY ARE PLACED IN ORDER IN ERECTION DRAWINGS.