

RIDGE

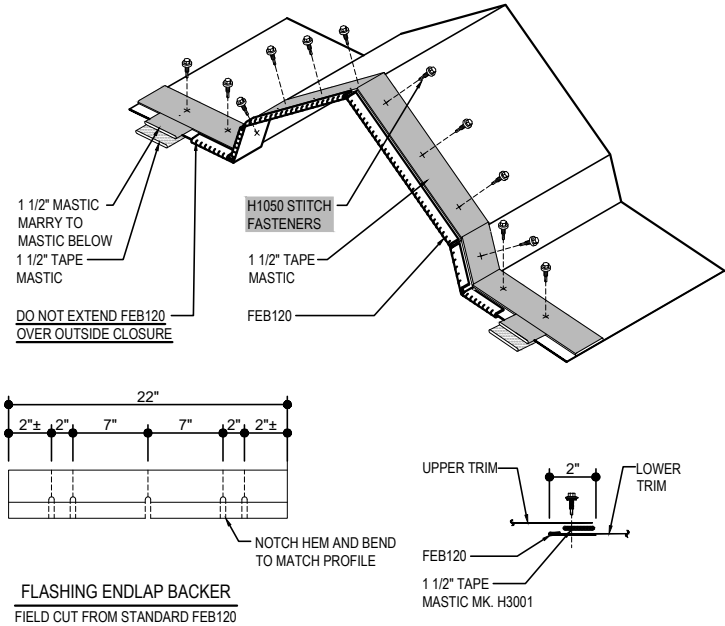
- EG6010 - RIDGE
 - EG6020 - RIDGE - PURLIN INSULATION PAN
 - EG6030 - RIDGE - JOIST INSULATION PAN
 - EG6090 - RIDGE VENT DETAIL AT CFR
 - EG6090 - RIDGE VENT DETAIL AT SS360
 - EG6090 - RIDGE VENT DETAIL AT SSII
 - EG6095 - VENTED RIDGE TRIM DETAIL
-

EG6010 - RIDGE

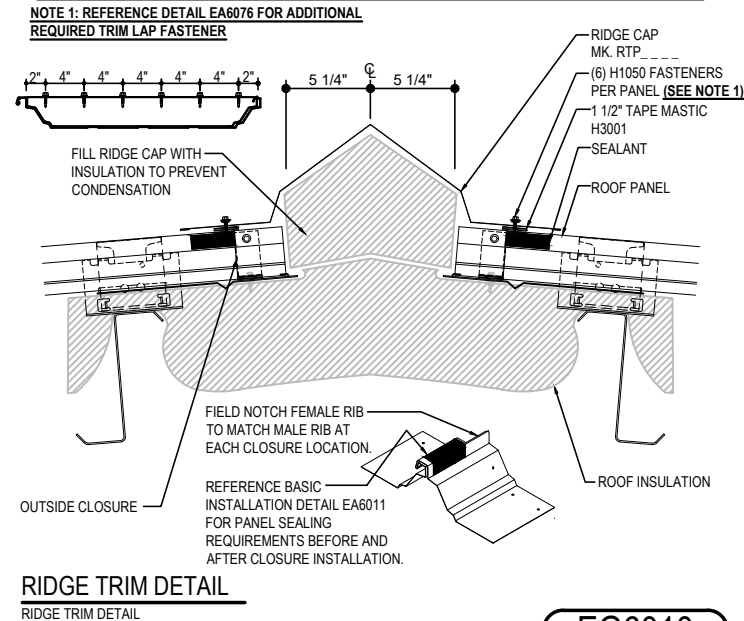
[Download the DWG file by clicking here.](#)

RIDGE CAP LAP & FLASHING BACKER

SLIDE FIELD CUT SECTION FLASHING ENDLAP BACKER ONTO THE LOWER TRIM PIECE. PLACE TAPE MASTIC NEXT TO HEM OF THE BACKER (NOT ON TOP OF HEM). MARRY LAP MASTIC WITH MASTIC BETWEEN RIDGE CAP AND OUTSIDE CLOSURES.



NOTE 1: REFERENCE DETAIL EA6076 FOR ADDITIONAL
REQUIRED TRIM LAP FASTENER



Detailer Notes:

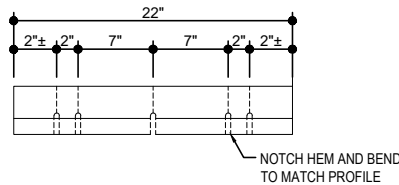
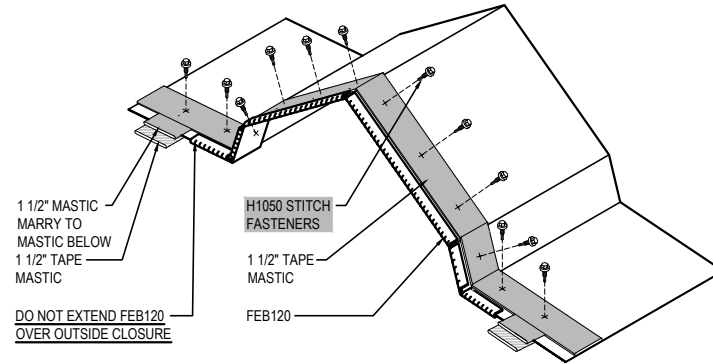
1) N/A

EG6020 - RIDGE - PURLIN INSULATION PAN

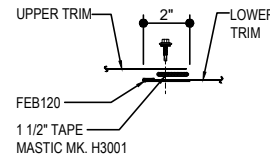
[Download the DWG file by clicking here.](#)

RIDGE CAP LAP & FLASHING BACKER

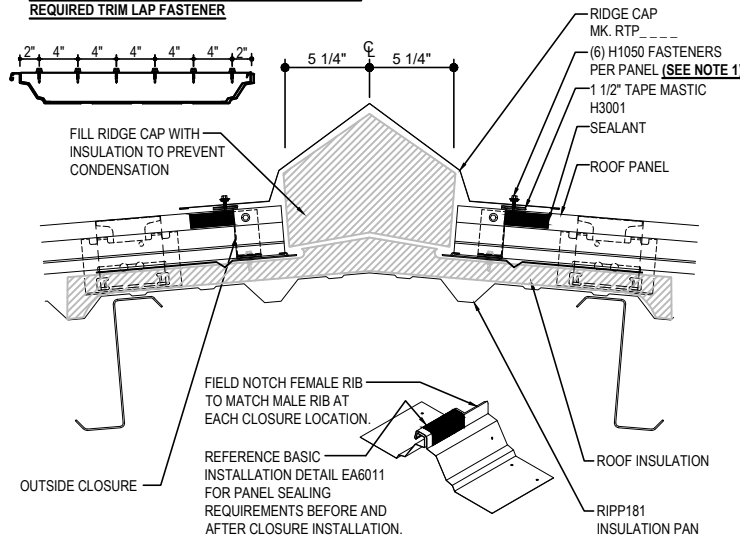
SLIDE FIELD CUT SECTION FLASHING ENDLAP BACKER ONTO THE LOWER TRIM PIECE. PLACE TAPE MASTIC NEXT TO HEM OF THE BACKER (NOT ON TOP OF HEM). MARRY LAP MASTIC WITH MASTIC BETWEEN RIDGE CAP AND OUTSIDE CLOSURES.



FLASHING ENDLAP BACKER
FIELD CUT FROM STANDARD FEB120



NOTE 1: REFERENCE DETAIL EA6076 FOR ADDITIONAL REQUIRED TRIM LAP FASTENER



RIDGE TRIM DETAIL
RIDGE TRIM DETAIL

EG6020

Detailer Notes:

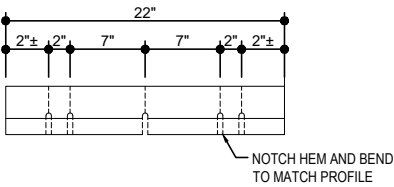
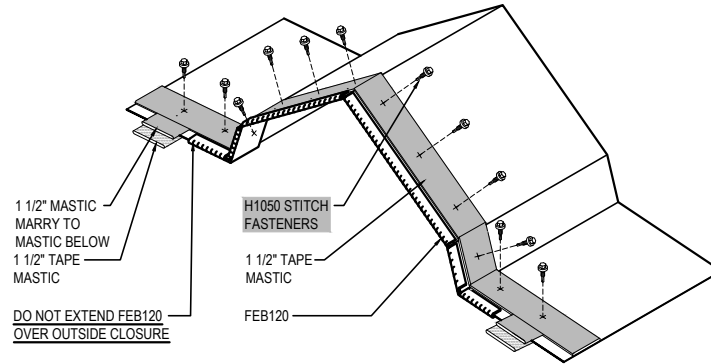
1) N/A

EG6030 - RIDGE - JOIST INSULATION PAN

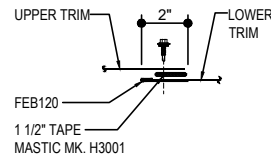
[Download the DWG file by clicking here.](#)

RIDGE CAP LAP & FLASHING BACKER

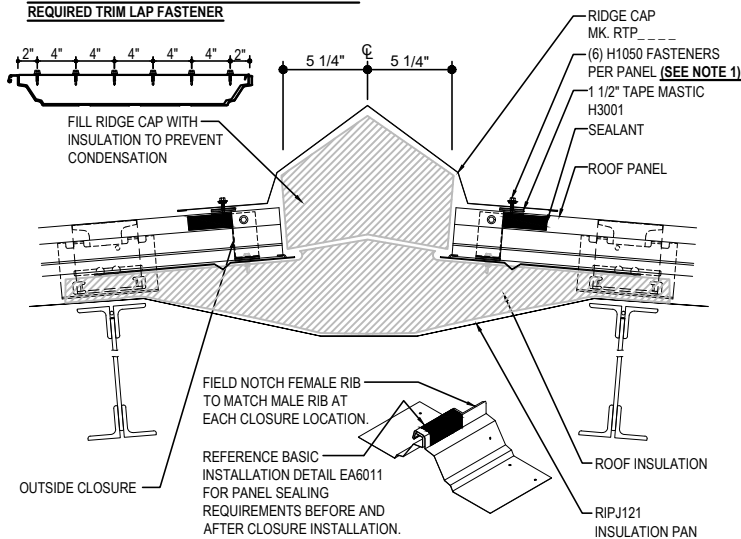
SLIDE FIELD CUT SECTION FLASHING ENDLAP BACKER ONTO THE LOWER TRIM PIECE. PLACE TAPE MASTIC NEXT TO HEM OF THE BACKER (NOT ON TOP OF HEM). MARRY LAP MASTIC WITH MASTIC BETWEEN RIDGE CAP AND OUTSIDE CLOSURES.



FLASHING ENDLAP BACKER
FIELD CUT FROM STANDARD FEB120



NOTE 1: REFERENCE DETAIL EA6076 FOR ADDITIONAL REQUIRED TRIM LAP FASTENER



RIDGE TRIM DETAIL
RIDGE TRIM DETAIL

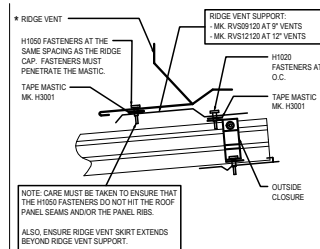
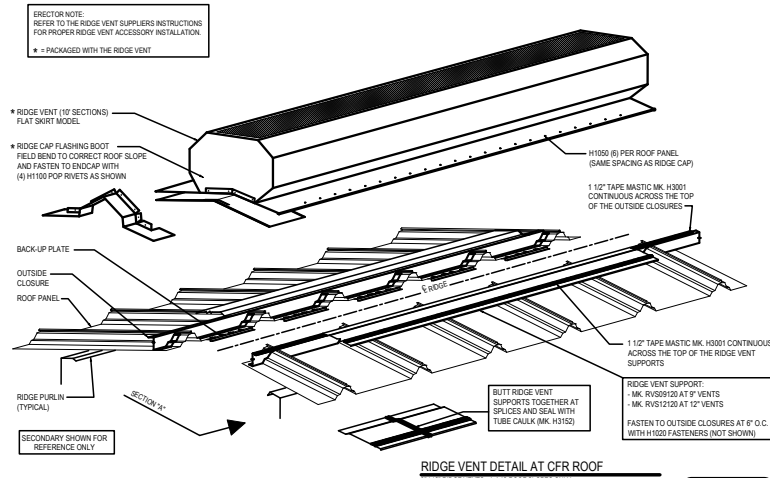
EG6030

Detailer Notes:

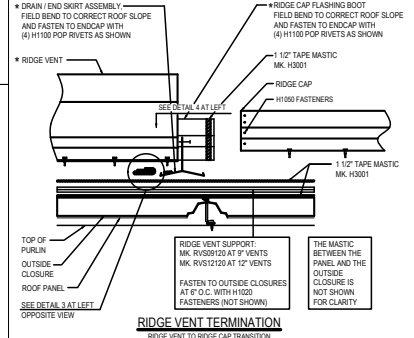
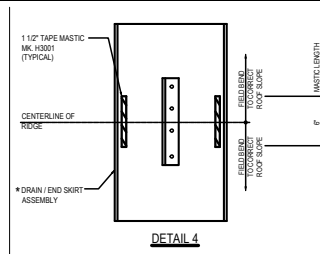
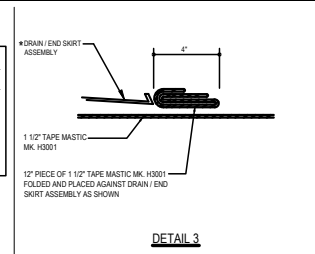
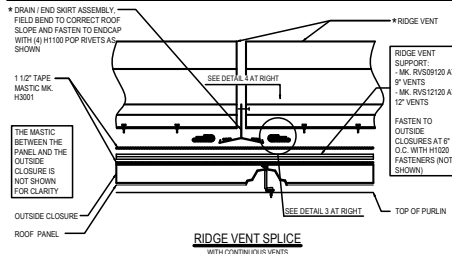
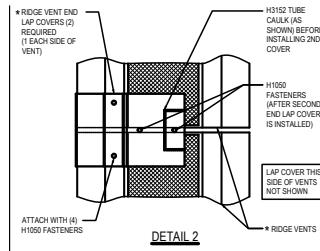
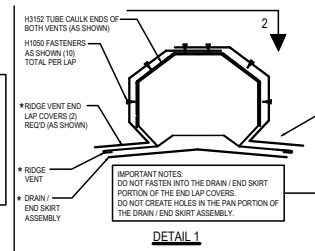
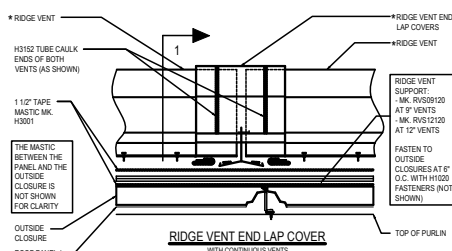
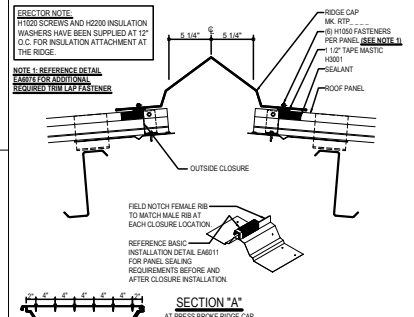
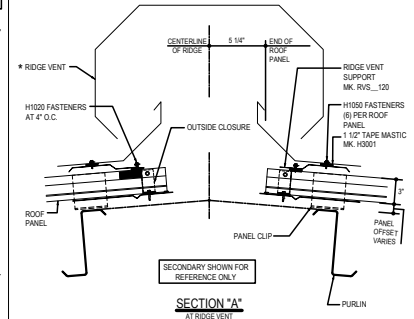
- 1) N/A

EG6090 - RIDGE VENT DETAIL AT CFR

[Download the DWG file by clicking here.](#)



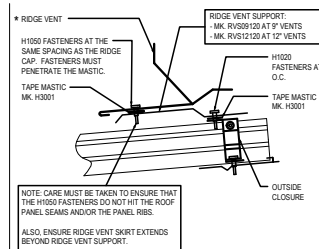
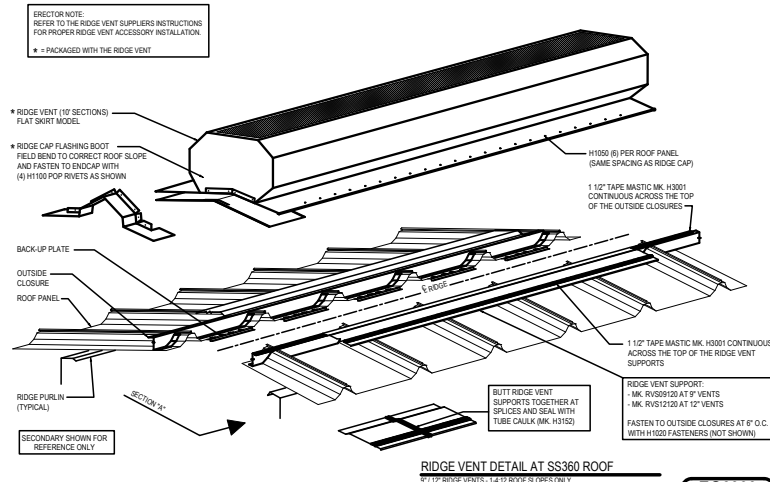
ENLARGED VIEW OF RIDGE VENT SUPPORT



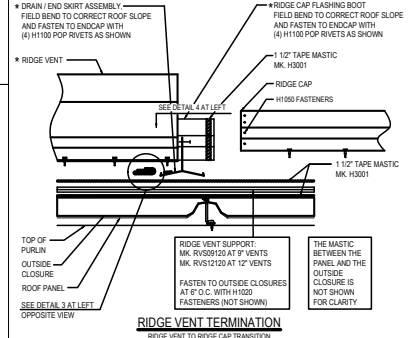
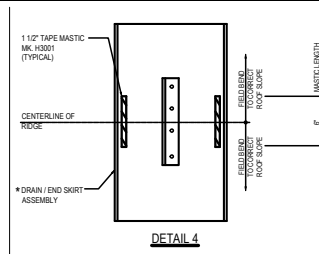
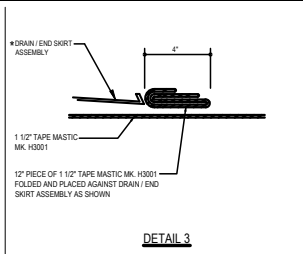
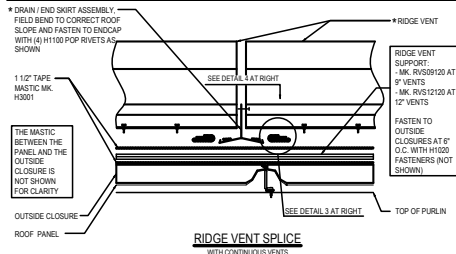
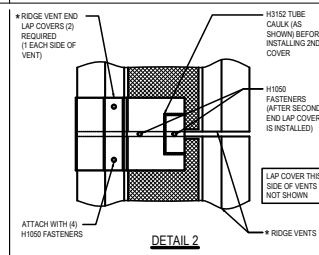
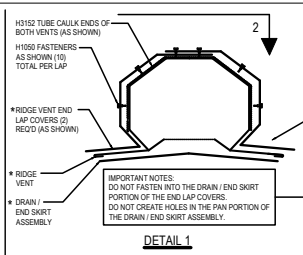
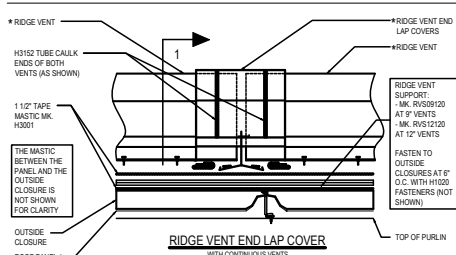
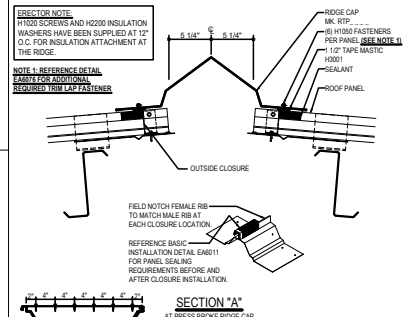
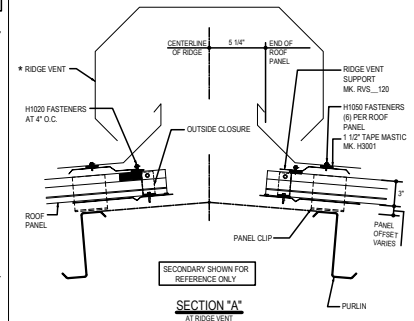
Detailer Notes:

EG6090 - RIDGE VENT DETAIL AT SS360

[Download the DWG file by clicking here.](#)



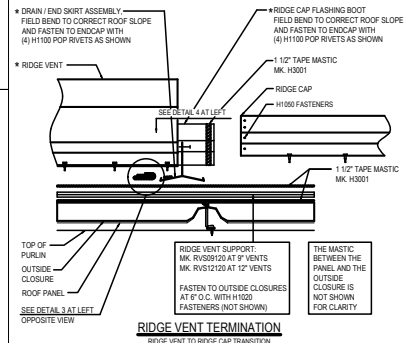
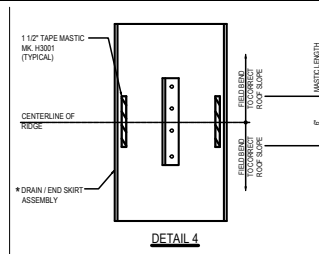
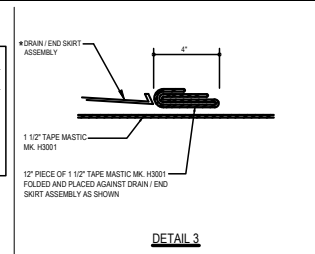
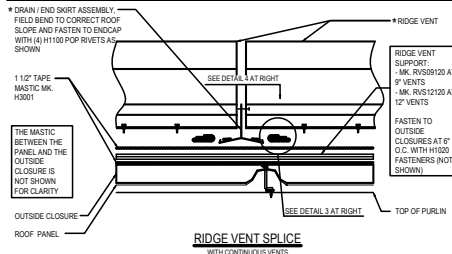
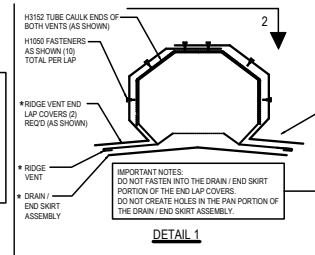
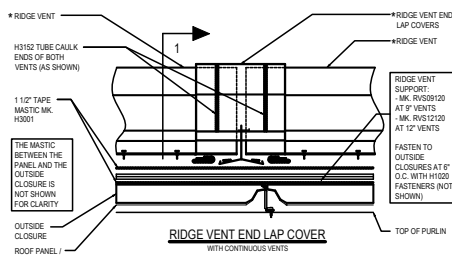
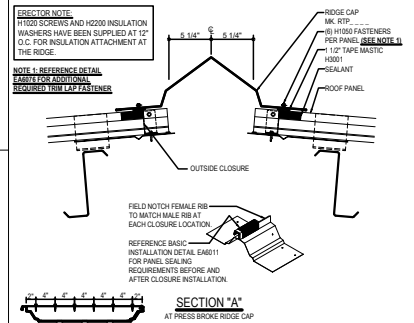
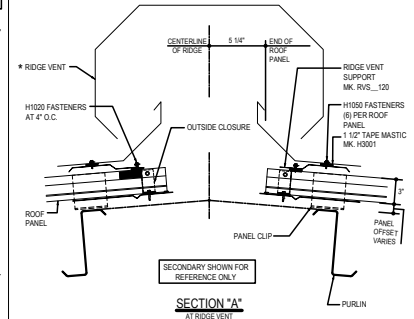
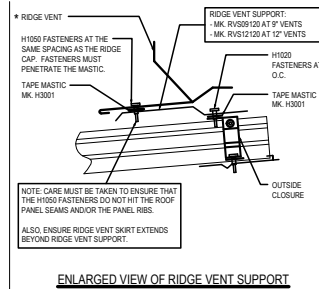
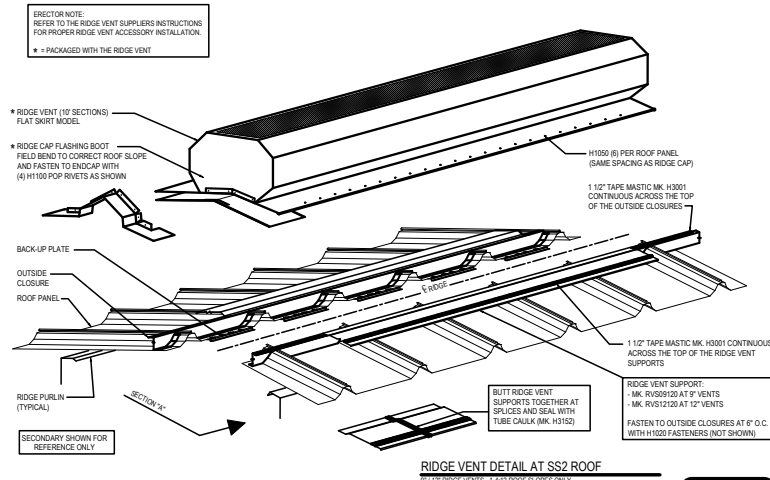
ENLARGED VIEW OF RIDGE VENT SUPPORT



Detailer Notes:

EG6090 - RIDGE VENT DETAIL AT SSII

[Download the DWG file by clicking here.](#)



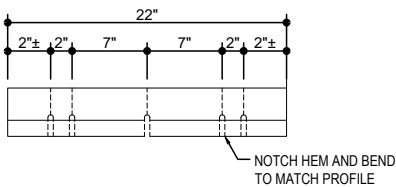
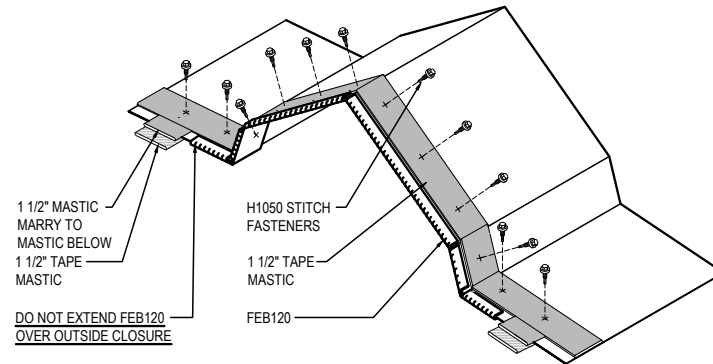
Detailer Notes:

EG6095 - VENTED RIDGE TRIM DETAIL

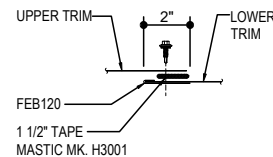
[Download the DWG file by clicking here.](#)

RIDGE CAP LAP & FLASHING BACKER

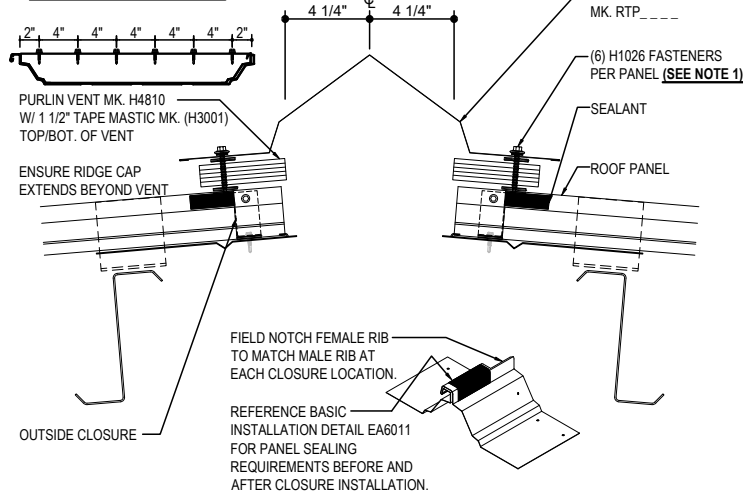
SLIDE FIELD CUT SECTION FLASHING ENDLAP BACKER ONTO THE LOWER TRIM PIECE. PLACE TAPE MASTIC NEXT TO HEM OF THE BACKER (NOT ON TOP OF HEM). MARRY LAP MASTIC WITH MASTIC BETWEEN RIDGE CAP AND OUTSIDE CLOSURES.



FLASHING ENDLAP BACKER
FIELD CUT FROM STANDARD FEB120



NOTE 1: REFERENCE DETAIL EA6076 FOR ADDITIONAL REQUIRED TRIM LAP FASTENER



VENTED RIDGE TRIM DETAIL

EG6095

Detailer Notes:

1) N/A