

HIGH EAVE (SCULPTURED)

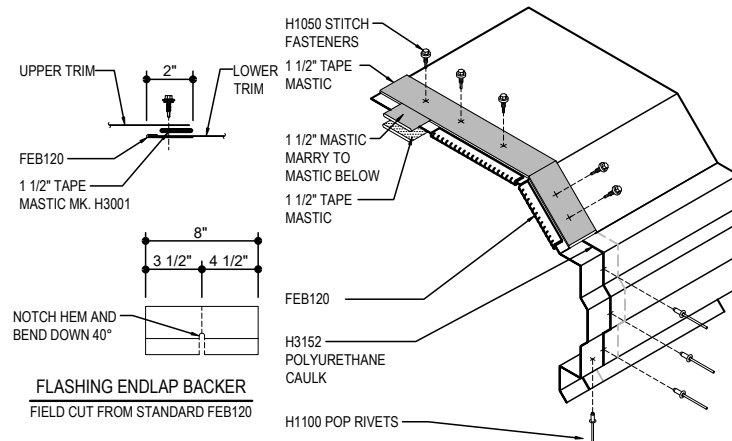
- EH3010 - HIGH EAVE STRUT w WALL PANEL
 - EH3030 - HIGH EAVE w MASONRY WALL
 - EH3050 - HIGH EAVE GIRT w NO WALL PANEL
 - EH3051 - HIGH EAVE STRUT w NO WALL PANEL
 - EH3055 - HIGH EAVE GIRT w PARTIAL WALL PANEL
 - EH3056 - HIGH EAVE STRUT w PARTIAL WALL PANEL
 - EH3610 - HIGH EAVE STRUT w INSULATED WALL PANEL
-

EH3030 - HIGH EAVE W/ MASONRY WALL

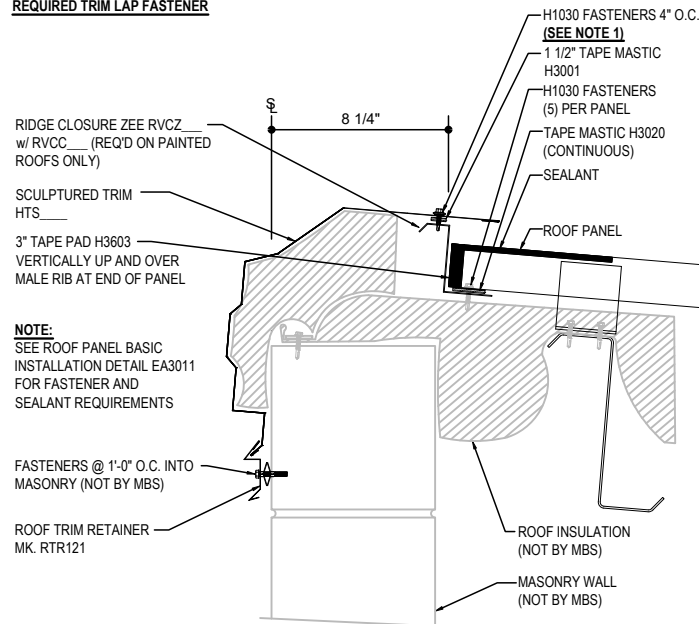
[Download the DWG file by clicking here.](#)

HIGH EAVE LAP & FLASHING BACKER

SLIDE FIELD CUT SECTION FLASHING ENDLAP BACKER ONTO THE LOWER TRIM PIECE. PLACE TAPE MASTIC NEXT TO HEM OF THE BACKER (NOT ON TOP OF HEM). APPLY CONTINUOUS BEAD OF CAULK 1" FROM END OF TRIM DOWN PROFILE OF TRIM. FASTEN LAP WITH STITCH FASTENERS AND POP RIVETS AS SHOWN.



**NOTE 1: REFERENCE DETAIL
EA3076 FOR ADDITIONAL
REQUIRED TRIM LAP FASTENER**



HIGH EAVE SCULPTURED DETAIL

HIGH EAVE SCULPTURED DETAIL w/ MASONRY WALL

EH3030

Detailer Notes:

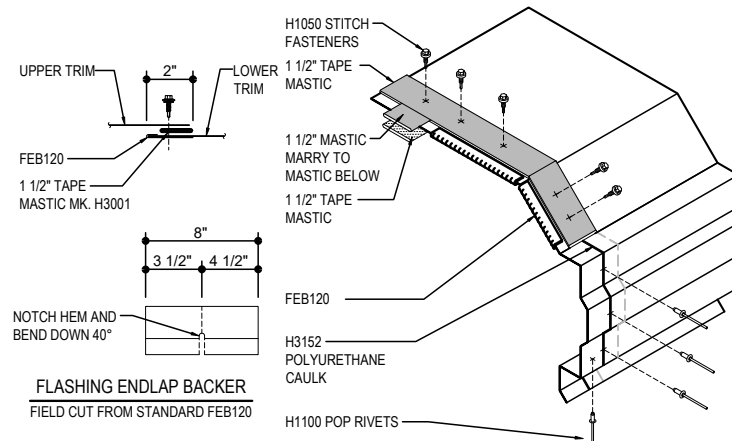
1) THIS STANDARD DETAIL IS APPROVED FOR MIAMI-DADE USE. ALTERATIONS TO THIS DETAIL MAY IMPACT APPROVAL.

EH3051 - HIGH EAVE STRUT W/ NO WALL PANEL

[Download the DWG file by clicking here.](#)

HIGH EAVE LAP & FLASHING BACKER

SLIDE FIELD CUT SECTION FLASHING ENDLAP BACKER ONTO THE LOWER TRIM PIECE. PLACE TAPE MASTIC NEXT TO HEM OF THE BACKER (NOT ON TOP OF HEM). APPLY CONTINUOUS BEAD OF CAULK 1" FROM END OF TRIM DOWN PROFILE OF TRIM. FASTEN LAP WITH STITCH FASTENERS AND POP RIVETS AS SHOWN.



**NOTE 1: REFERENCE DETAIL
EA3076 FOR ADDITIONAL
REQUIRED TRIM LAP FASTENER**

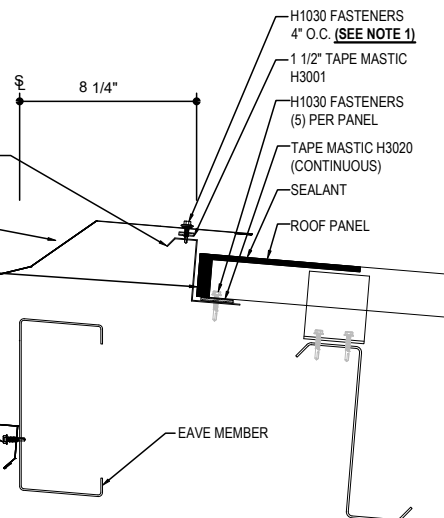
NOTE:
SEE ROOF PANEL BASIC
INSTALLATION DETAIL EA3011
FOR FASTENER AND
SEALANT REQUIREMENTS

RIDGE CLOSURE ZEE RVCZ____
w/ RVCC____ (REQ'D ON PAINTED
ROOFS ONLY)

SCULPTU

HTS____
3" TAPE PAD H3603 _____
VERTICALLY UP AND OVER
MALE RIB AT END OF PANEL

H1040 FASTENERS
@ 1'-0" O.C.



HIGH EAVE SCULPTURED DETAIL

HIGH EAVE SCULPTURED DETAIL w/ NO WALL PANELS

EH3051

Detailer Notes:

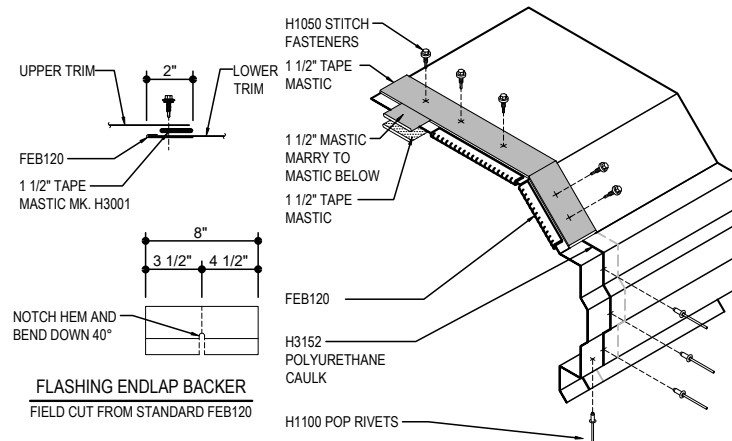
1) THIS STANDARD DETAIL IS APPROVED FOR MIAMI-DADE USE. ALTERATIONS TO THIS DETAIL MAY IMPACT APPROVAL.

EH3056 - HIGH EAVE STRUT W/ PARTIAL WALL PANEL

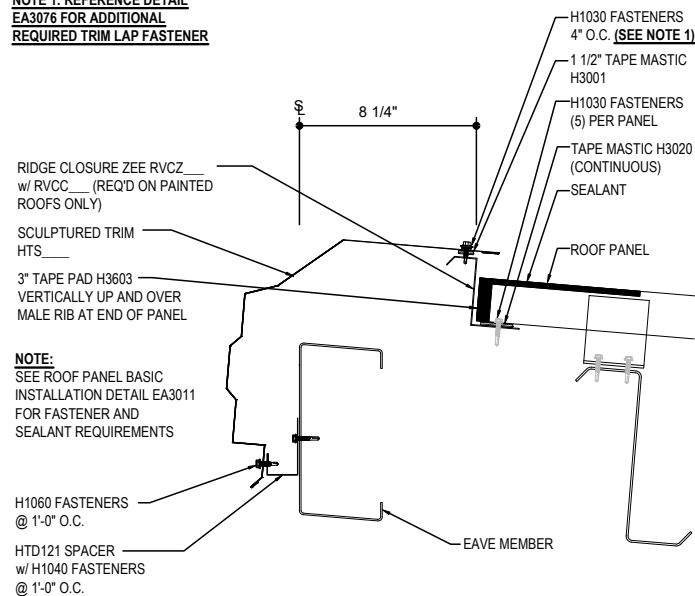
[Download the DWG file by clicking here.](#)

HIGH EAVE LAP & FLASHING BACKER

SLIDE FIELD CUT SECTION FLASHING ENLAP BACKER ONTO THE LOWER TRIM PIECE. PLACE TAPE MASTIC NEXT TO HEM OF THE BACKER (NOT ON TOP OF HEM). APPLY CONTINUOUS BEAD OF CAULK 1" FROM END OF TRIM DOWN PROFILE OF TRIM. FASTEN LAP WITH STITCH FASTENERS AND POP RIVETS AS SHOWN.



**NOTE 1: REFERENCE DETAIL
EA3076 FOR ADDITIONAL
REQUIRED TRIM LAP FASTENER**



HIGH EAVE SCULPTURED DETAIL

HIGH EAVE SCULPTURED DETAIL w/ PARTIAL WALL PANELS

EH3056

Detailer Notes:

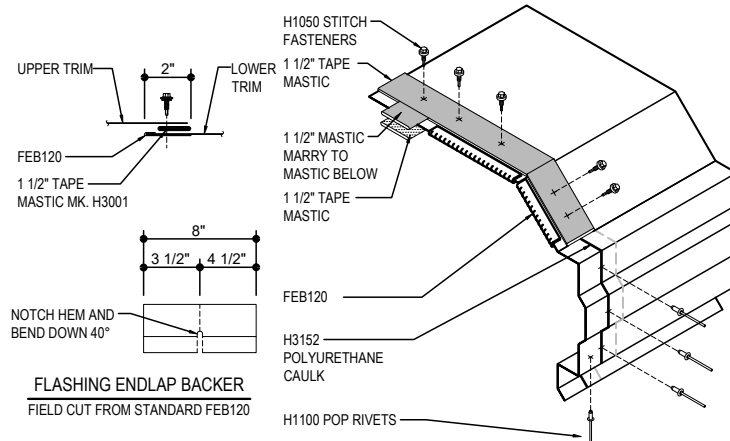
1) THIS STANDARD DETAIL IS APPROVED FOR MIAMI-DADE USE. ALTERATIONS TO THIS DETAIL MAY IMPACT APPROVAL.

EH3610 - HIGH EAVE STRUT W/ INSULATED WALL PANEL

[Download the DWG file by clicking here.](#)

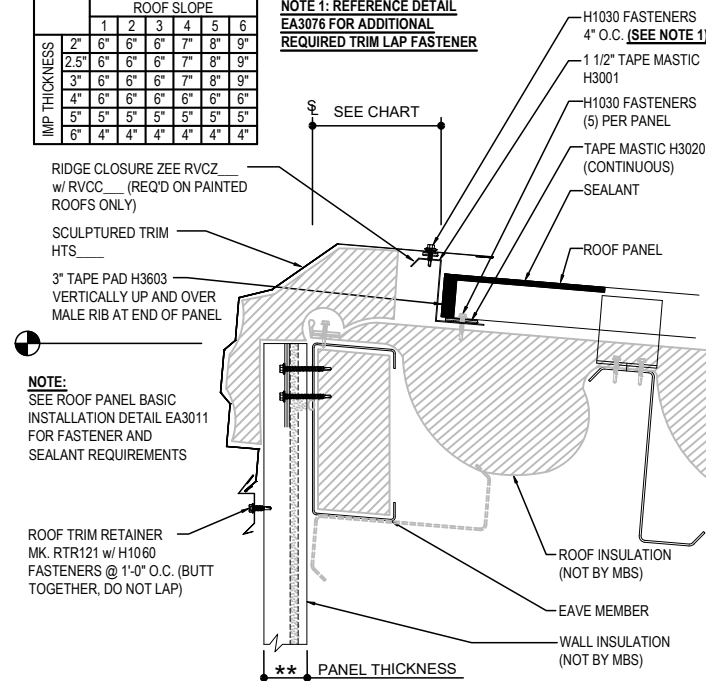
HIGH EAVE LAP & FLASHING BACKER

SLIDE FIELD CUT SECTION FLASHING ENDLAP BACKER ONTO THE LOWER TRIM PIECE. PLACE TAPE MASTIC NEXT TO HEM OF THE BACKER (NOT ON TOP OF HEM). APPLY CONTINUOUS BEAD OF CAULK 1" FROM END OF TRIM DOWN PROFILE OF TRIM. FASTEN LAP WITH STITCH FASTENERS AND POP RIVETS AS SHOWN.



IMP. THICKNESS	ROOF SLOPE					
	1	2	3	4	5	6
2"	6"	6"	6"	7"	8"	9"
2.5"	6"	6"	6"	7"	8"	9"
3"	6"	6"	6"	7"	8"	9"
4"	6"	6"	6"	6"	6"	6"
5"	5"	5"	5"	5"	5"	5"
6"	4"	4"	4"	4"	4"	4"

**NOTE 1: REFERENCE DETAIL
EA3076 FOR ADDITIONAL
REQUIRED TRIM LAP FASTENER**



HIGH EAVE SCULPTURED DETAIL

HIGH EAVE SCULPTURED DETAIL w/ WALL PANELS
SEE WALL SHEETING ERECTION NOTES FOR WALL PANEL FASTENER LOCATIONS

EH3610

Detailer Notes:

- 1) THIS STANDARD DETAIL IS APPROVED FOR MIAMI-DADE USE. ALTERATIONS TO THIS DETAIL MAY IMPACT APPROVAL.