

HIGH EAVE (SCULPTURED)

EH6011 - SCULPTURED HIGH EAVE STRUT W/ WALL PANEL

EH6031 - SCULPTURED HIGH EAVE W/ MASONRY WALL

EH6052 - SCULPTURED HIGH EAVE STRUT W/ OPEN WALL AND NO SOFFIT PANEL

EH6053 - SCULPTURED HIGH EAVE STRUT W/ OPEN WALL AND SOFFIT PANEL

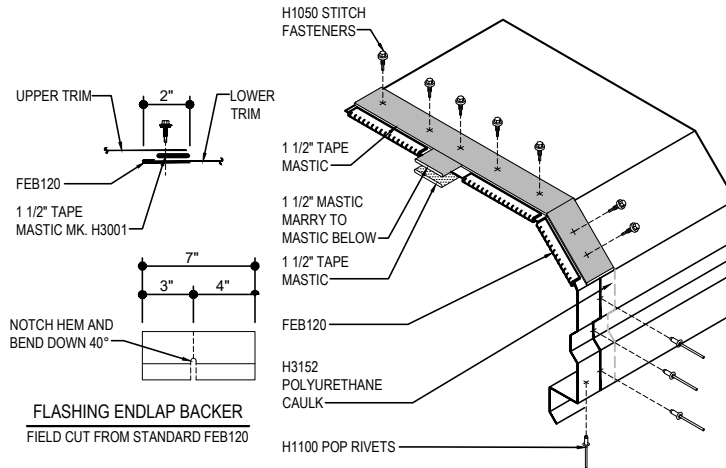
EH6611 - SCULPTURED HIGH EAVE STRUT W/ INSULATED WALL PANEL

EH6011 - SCULPTURED HIGH EAVE STRUT W/ WALL PANEL

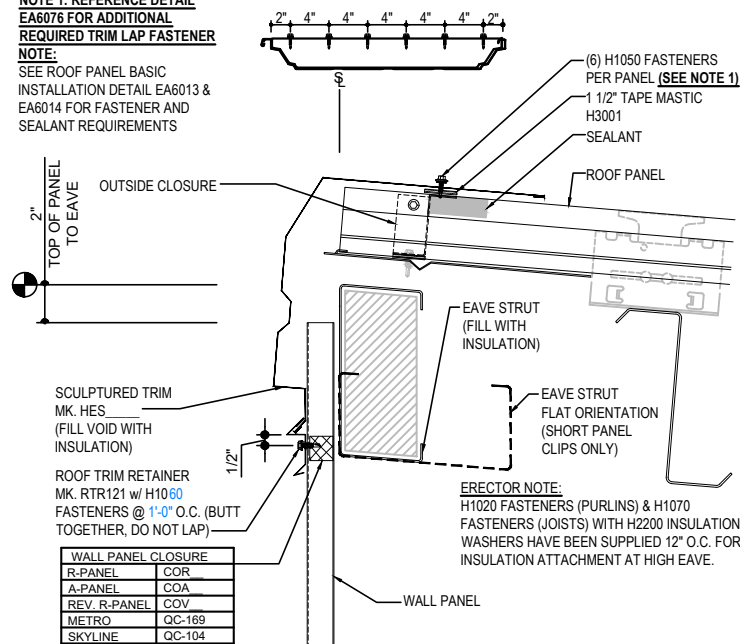
[Download the DWG file by clicking here.](#)

HIGH EAVE LAP & FLASHING BACKER

SLIDE FIELD CUT SECTION FLASHING ENDLAP BACKER ONTO THE LOWER TRIM PIECE. PLACE TAPE MASTIC NEXT TO HEM OF THE BACKER (NOT ON TOP OF HEM). APPLY CONTINUOUS BEAD OF CAULK 1" FROM END OF TRIM DOWN PROFILE OF TRIM. FASTEN LAP WITH STITCH FASTENERS AND POP RIVETS AS SHOWN.



NOTE 1: REFERENCE DETAIL EA6076 FOR ADDITIONAL REQUIRED TRIM LAP FASTENER
NOTE: SEE ROOF PANEL BASIC INSTALLATION DETAIL EA6013 & EA6014 FOR FASTENER AND SEALANT REQUIREMENTS



SCULPTURED HIGH EAVE STRUT W/ WALL PANEL

TRAPEZOIDAL SEAM ROOF PANEL
SEE WALL SHEETING ERECTION NOTES FOR WALL PANEL FASTENER LOCATIONS

EH6011

Detailer Notes:

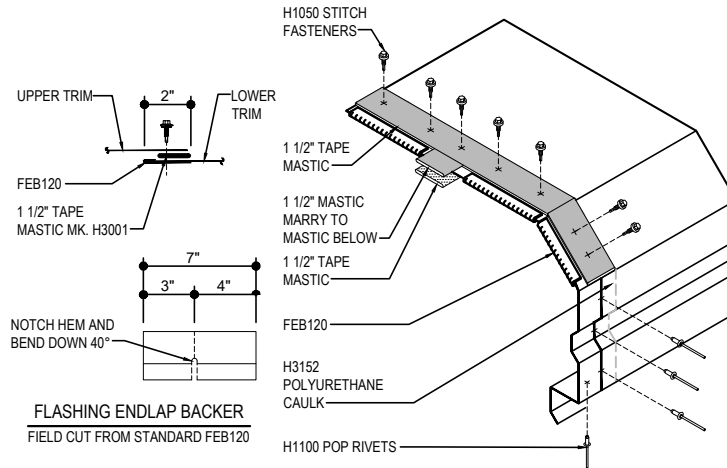
- 1) CLOSURES HIGH EAVE LAYER DEFAULT IS ON. LAYER MUST BE TURNED OFF IF CLOSURES ARE NOT REQUIRED.
- 2) THIS STANDARD DETAIL IS APPROVED FOR MIAMI-DADE USE. ALTERATIONS TO THIS DETAIL MAY IMPACT APPROVAL.

EH6031 - SCULPTURED HIGH EAVE W/ MASONRY WALL

[Download the DWG file by clicking here.](#)

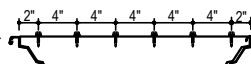
HIGH EAVE LAP & FLASHING BACKER

SLIDE FIELD CUT SECTION FLASHING ENDLAP BACKER ONTO THE LOWER TRIM PIECE. PLACE TAPE MASTIC NEXT TO HEM OF THE BACKER (NOT ON TOP OF HEM). APPLY CONTINUOUS BEAD OF CAULK 1" FROM END OF TRIM DOWN PROFILE OF TRIM. FASTEN LAP WITH STITCH FASTENERS AND POP RIVETS AS SHOWN.

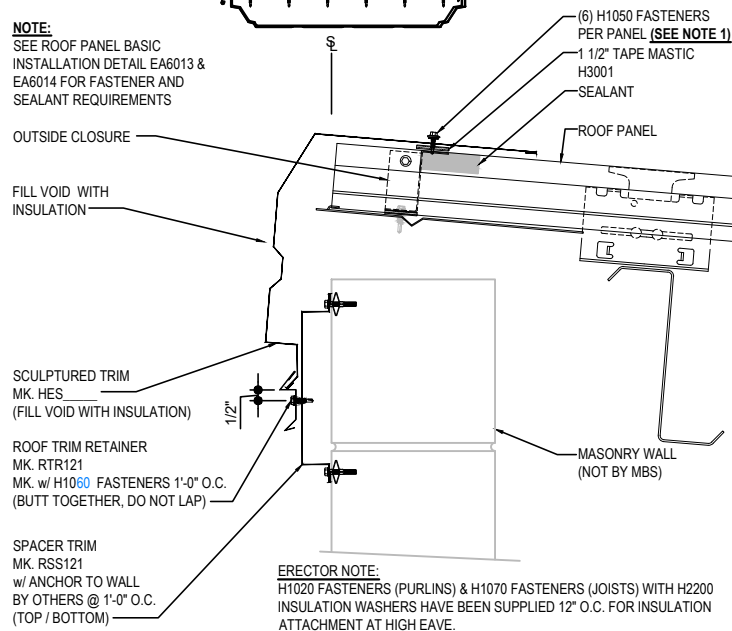


FLASHING ENDLAP BACKER
FIELD CUT FROM STANDARD FEB120

NOTE 1: REFERENCE DETAIL
EA6076 FOR ADDITIONAL
REQUIRED TRIM LAP FASTENER



NOTE:
SEE ROOF PANEL BASIC
INSTALLATION DETAIL EA6013 &
EA6014 FOR FASTENER AND
SEALANT REQUIREMENTS



SCULPTURED HIGH EAVE W/ MASONRY WALL
TRAPEZOIDAL SEAM ROOF PANEL

EH6031

Detailer Notes:

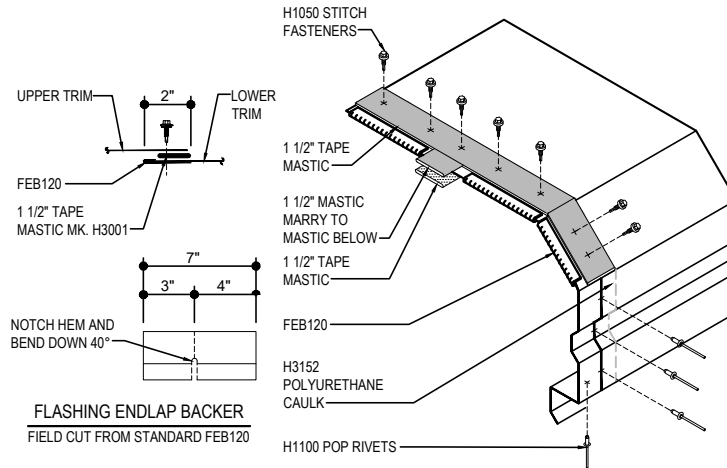
- 1) THIS STANDARD DETAIL IS APPROVED FOR MIAMI-DADE USE. ALTERATIONS TO THIS DETAIL MAY IMPACT APPROVAL.

EH6052 - SCULPTURED HIGH EAVE STRUT W/ OPEN WALL AND NO SOFFIT PANEL

[Download the DWG file by clicking here.](#)

HIGH EAVE LAP & FLASHING BACKER

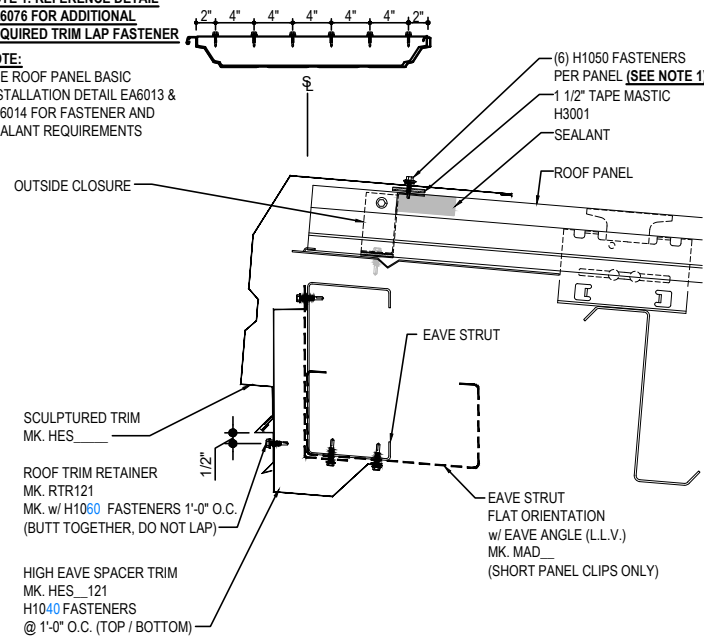
SLIDE FIELD CUT SECTION FLASHING ENDLAP BACKER ONTO THE LOWER TRIM PIECE. PLACE TAPE MASTIC NEXT TO HEM OF THE BACKER (NOT ON TOP OF HEM). APPLY CONTINUOUS BEAD OF CAULK 1" FROM END OF TRIM DOWN PROFILE OF TRIM. FASTEN LAP WITH STITCH FASTENERS AND POP RIVETS AS SHOWN.



FLASHING ENDLAP BACKER
FIELD CUT FROM STANDARD FEB120

NOTE 1: REFERENCE DETAIL EA6076 FOR ADDITIONAL REQUIRED TRIM LAP FASTENER

NOTE:
SEE ROOF PANEL BASIC INSTALLATION DETAIL EA6013 & EA6014 FOR FASTENER AND SEALANT REQUIREMENTS



SCULPTURED HIGH EAVE STRUT
W/ OPEN WALL AND NO SOFFIT PANEL
TRAPEZOIDAL SEAM ROOF PANEL

EH6052

Detailer Notes:

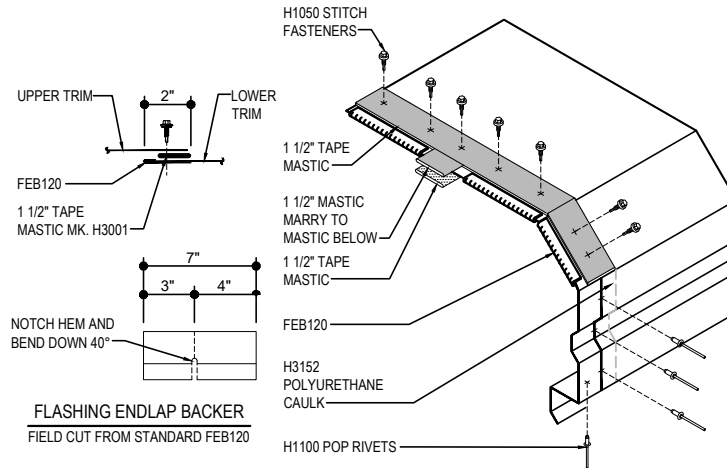
- 1) THIS STANDARD DETAIL IS APPROVED FOR MIAMI-DADE USE. ALTERATIONS TO THIS DETAIL MAY IMPACT APPROVAL.
- 2) DETAIL CAN BE USED WITH PARTIALLY SHEETED WALLS AND FULLY OPEN WALLS.
- 3) DETAIL ONLY APPLIES TO THE MAIN BUILDING EAVE LINE. SEE EAVE/RAKE EXTENSION OR CANOPY SHEETING SECTIONS FOR OTHER SOFFIT/LINER CONFIGURATIONS.

EH6053 - SCULPTURED HIGH EAVE STRUT W/ OPEN WALL AND SOFFIT PANEL

[Download the DWG file by clicking here.](#)

HIGH EAVE LAP & FLASHING BACKER

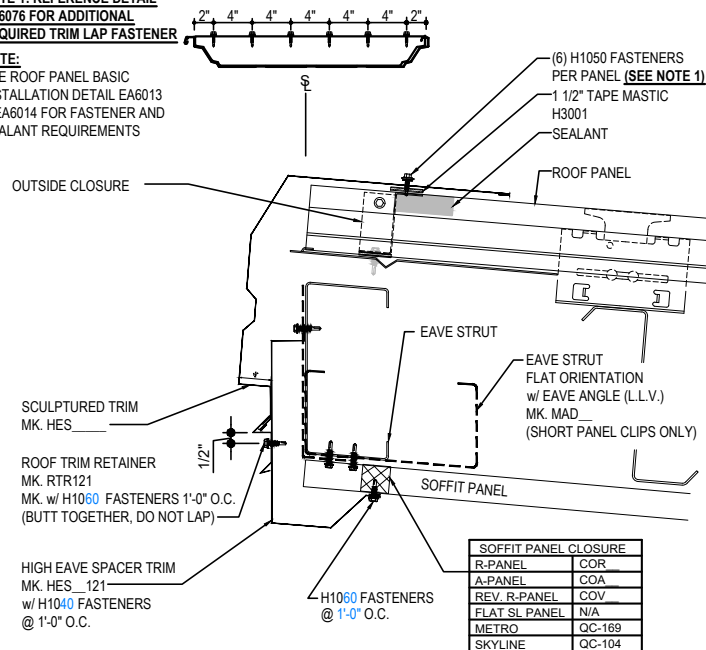
SLIDE FIELD CUT SECTION FLASHING ENDLAP BACKER ONTO THE LOWER TRIM PIECE. PLACE TAPE MASTIC NEXT TO HEM OF THE BACKER (NOT ON TOP OF HEM). APPLY CONTINUOUS BEAD OF CAULK 1" FROM END OF TRIM DOWN PROFILE OF TRIM. FASTEN LAP WITH STITCH FASTENERS AND POP RIVETS AS SHOWN.



FLASHING ENDLAP BACKER
FIELD CUT FROM STANDARD FEB120

NOTE 1: REFERENCE DETAIL
EA6076 FOR ADDITIONAL
REQUIRED TRIM LAP FASTENER

NOTE:
SEE ROOF PANEL BASIC
INSTALLATION DETAIL EA6013
& EA6014 FOR FASTENER AND
SEALANT REQUIREMENTS



SCULPTURED HIGH EAVE STRUT
W/ OPEN WALL AND SOFFIT PANEL
TRAPEZOIDAL SEAM ROOF PANEL

EH6053

Detailer Notes:

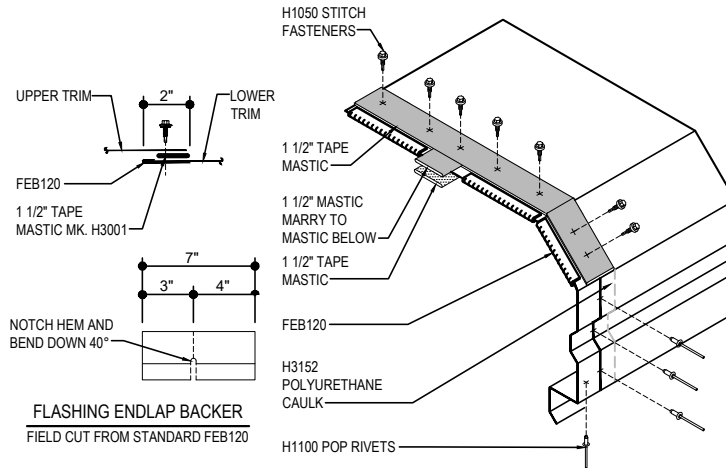
- 1) THIS STANDARD DETAIL IS APPROVED FOR MIAMI-DADE USE. ALTERATIONS TO THIS DETAIL MAY IMPACT APPROVAL.
- 2) DETAIL CAN BE USED WITH PARTIALLY SHEETED WALLS AND FULLY OPEN WALLS.
- 3) DETAIL ONLY APPLIES TO THE MAIN BUILDING EAVE LINE. SEE EAVE/RAKE EXTENSION OR CANOPY SHEETING SECTIONS FOR OTHER SOFFIT/LINER CONFIGURATIONS.

EH6611 - SCULPTURED HIGH EAVE STRUT W/ INSULATED WALL PANEL

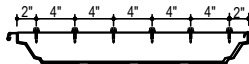
[Download the DWG file by clicking here.](#)

HIGH EAVE LAP & FLASHING BACKER

SLIDE FIELD CUT SECTION FLASHING ENDLAP BACKER ONTO THE LOWER TRIM PIECE. PLACE TAPE MASTIC NEXT TO HEM OF THE BACKER (NOT ON TOP OF HEM). APPLY CONTINUOUS BEAD OF CAULK 1" FROM END OF TRIM DOWN PROFILE OF TRIM. FASTEN LAP WITH STITCH FASTENERS AND POP RIVETS AS SHOWN.

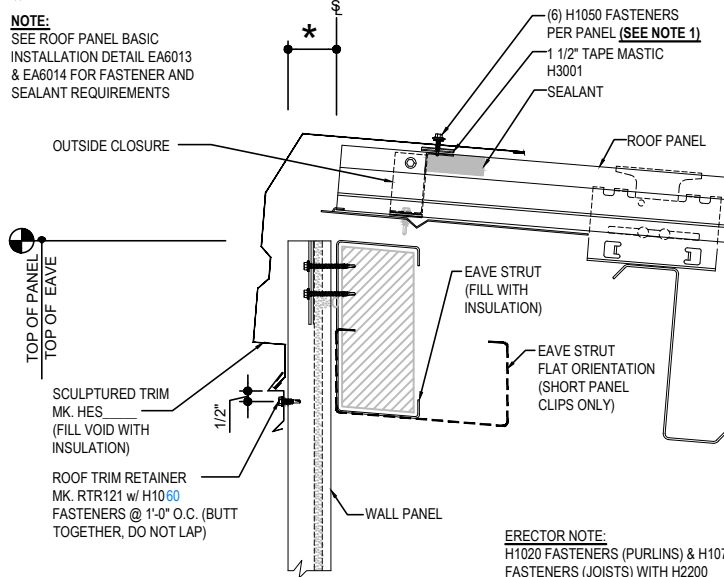


NOTE 1: REFERENCE DETAIL EA6076 FOR ADDITIONAL REQUIRED TRIM LAP FASTENER



* = WALL PNL DEPTH - 2"

NOTE:
SEE ROOF PANEL BASIC INSTALLATION DETAIL EA6013 & EA6014 FOR FASTENER AND SEALANT REQUIREMENTS



ERECTOR NOTE:
H1020 FASTENERS (PURLINS) & H1070 FASTENERS (JOISTS) WITH H2200 INSULATION WASHERS HAVE BEEN SUPPLIED 12" O.C. FOR INSULATION ATTACHMENT AT HIGH EAVE.

SCULPTURED HIGH EAVE STRUT W/ INSULATED WALL PANEL

TRAPEZOIDAL SEAM ROOF PANEL
SEE WALL SHEETING ERECTION NOTES FOR WALL PANEL FASTENER LOCATIONS

EH6611

Detailer Notes:

- 1) THIS STANDARD DETAIL IS APPROVED FOR MIAMI-DADE USE. ALTERATIONS TO THIS DETAIL MAY IMPACT APPROVAL.
- 2) ANYTHING ABOVE 4" IMP WALL THICKNESS WILL REQUIRE ROOF PANEL HOLDBACK VERIFICATION.