

HIGH EAVE (PARAPET)

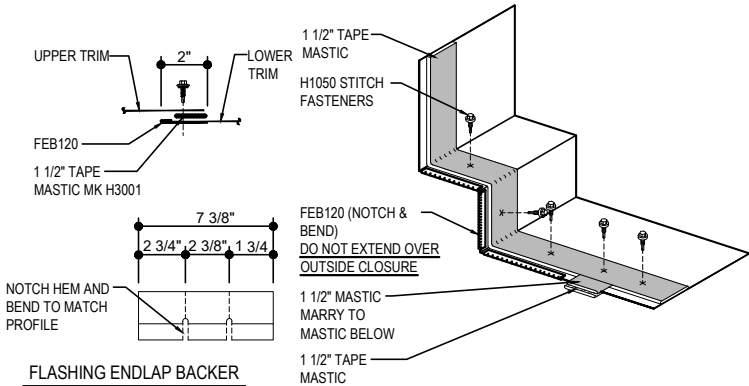
EI3010-WALL PANEL ABOVE
EI3030-MASONRY WALL
EI3050-WALL PANEL ABOVE & BELOW
EI3070-NON-STRUCTURAL PARAPET
EI3610-IMP WALL PANEL ABOVE
EI3650-IMP WALL PANEL ABOVE & BELOW
EI3670-NON-STRUCTURAL PARAPET - IMP

EI3010 - WALL PANEL ABOVE

Download the DWG file by clicking [here](#).

HIGH EAVE LAP & FLASHING BACKER

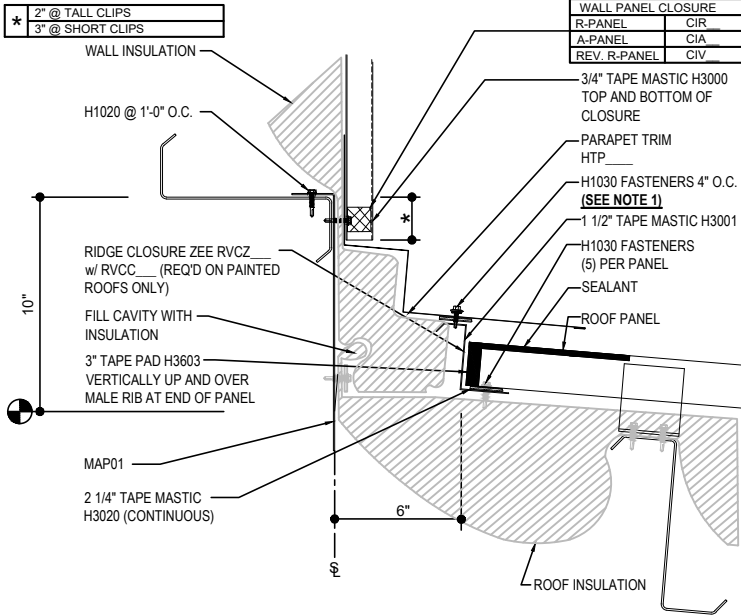
SLIDE FIELD CUT SECTION FLASHING ENDLAP BACKER ONTO THE LOWER TRIM PIECE. PLACE TAPE MASTIC NEXT TO HEM OF THE BACKER (NOT ON TOP OF HEM). APPLY CONTINUOUS BEAD OF CAULK 1" FROM END OF TRIM DOWN PROFILE OF TRIM. FASTEN LAP WITH STITCH FASTENERS AND POP RIVETS AS SHOWN.



FLASHING ENDLAP BACKER
FIELD CUT FROM STANDARD FEB120

NOTE 1: REFERENCE DETAIL
EA3076 FOR ADDITIONAL
REQUIRED TRIM LAP FASTENER

NOTE:
SEE ROOF PANEL BASIC
INSTALLATION DETAIL EA3011
FOR FASTENER AND
SEALANT REQUIREMENTS



ERECTOR NOTE:
INSULATION TIE-OFF SHOWN IS ONE METHOD. MAY REQUIRE DIFFERENT METHOD BASED
ON SEQUENCE. H1020 FASTENERS (PURLINS) & H1070 FASTENERS (JOISTS) WITH H2200
INSULATION WASHERS HAVE BEEN SUPPLIED 12" O.C. FOR INSULATION ATTACHMENT

HIGH EAVE PARAPET DETAIL

HIGH EAVE PARAPET DETAIL w/ WALL PANEL ABOVE
SEE WALL SHEETING ERECTION NOTES FOR WALL PANEL FASTENER LOCATIONS

EI3010

Detailer Notes:

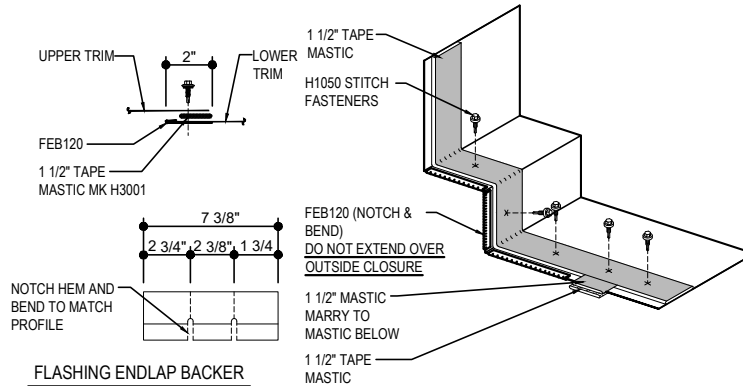
1) N/A

EI3030 - MASONRY WALL

[Download the DWG file by clicking here.](#)

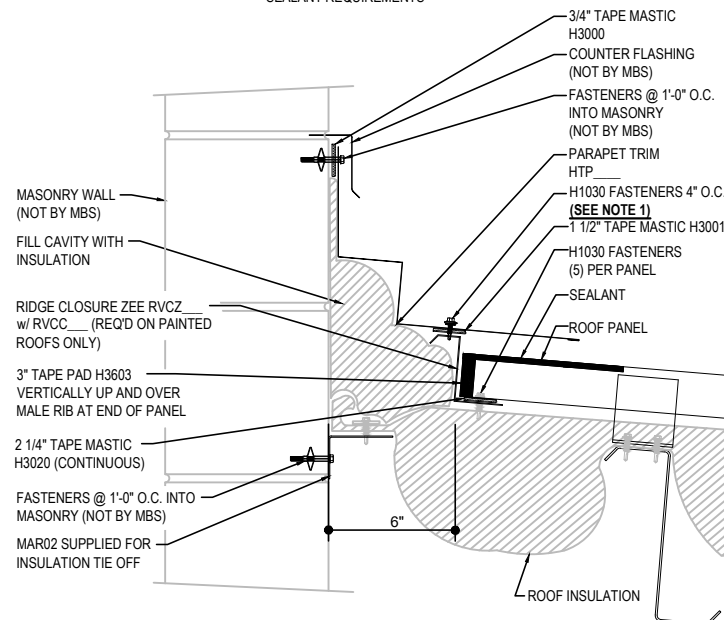
HIGH EAVE LAP & FLASHING BACKER

SLIDE FIELD CUT SECTION FLASHING ENDLAP BACKER ONTO THE LOWER TRIM PIECE. PLACE TAPE MASTIC NEXT TO HEM OF THE BACKER (NOT ON TOP OF HEM). APPLY CONTINUOUS BEAD OF CAULK 1" FROM END OF TRIM DOWN PROFILE OF TRIM. FASTEN LAP WITH STITCH FASTENERS AND POP RIVETS AS SHOWN.



NOTE 1: REFERENCE DETAIL
EA3076 FOR ADDITIONAL
REQUIRED TRIM LAP FASTENER

NOTE:
SEE ROOF PANEL BASIC
INSTALLATION DETAIL EA3011
FOR FASTENER AND
SEALANT REQUIREMENTS



ERECTOR NOTE:
INSULATION TIE-OFF SHOWN IS ONE METHOD. MAY REQUIRE DIFFERENT METHOD BASED ON SEQUENCE. H1020 FASTENERS (PURLINS) & H1070 FASTENERS (JOISTS) WITH H2200 INSULATION WASHERS HAVE BEEN SUPPLIED 12" O.C. FOR INSULATION ATTACHMENT

HIGH EAVE PARAPET DETAIL

HIGH EAVE PARAPET DETAIL w/ MASONRY WALL

EI3030

Detailer Notes:

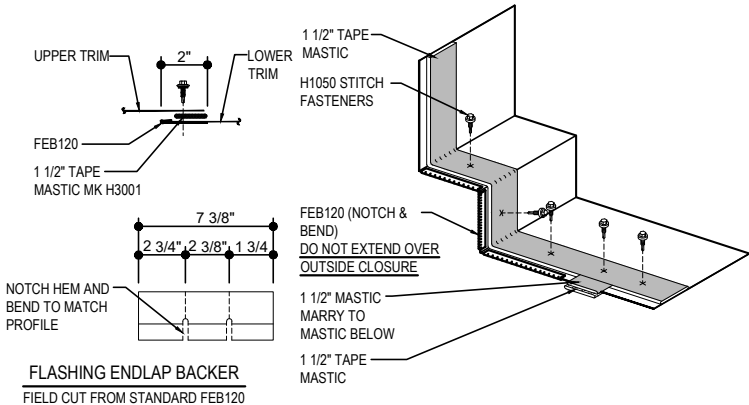
1) N/A

EI3050 - WALL PANEL ABOVE & BELOW

[Download the DWG file by clicking here.](#)

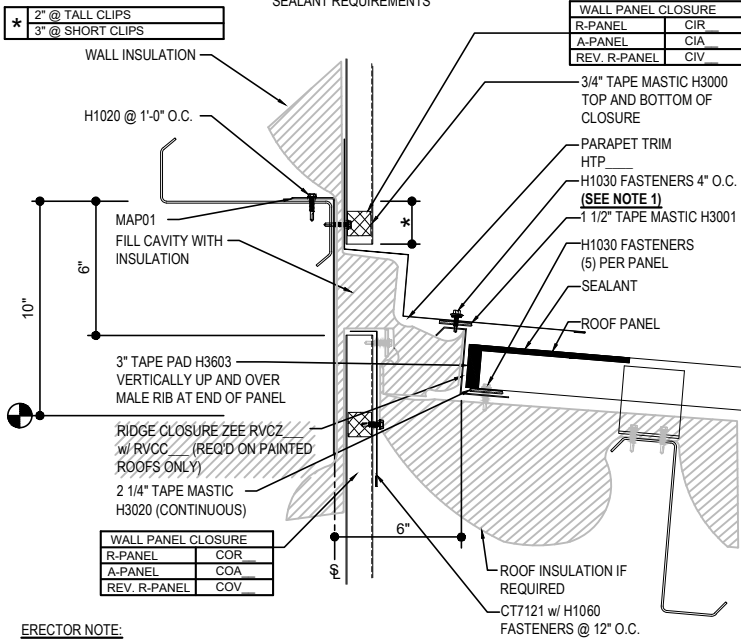
HIGH EAVE LAP & FLASHING BACKER

SLIDE FIELD CUT SECTION FLASHING ENDLAP BACKER ONTO THE LOWER TRIM PIECE. PLACE TAPE MASTIC NEXT TO HEM OF THE BACKER (NOT ON TOP OF HEM). APPLY CONTINUOUS BEAD OF CAULK 1" FROM END OF TRIM DOWN PROFILE OF TRIM. FASTEN LAP WITH STITCH FASTENERS AND POP RIVETS AS SHOWN.



NOTE 1: REFERENCE DETAIL
EA3076 FOR ADDITIONAL
REQUIRED TRIM LAP FASTENER

NOTE:
SEE ROOF PANEL BASIC
INSTALLATION DETAIL EA3011
FOR FASTENER AND
SEALANT REQUIREMENTS



ERECTOR NOTE:
INSULATION TIE-OFF SHOWN IS ONE METHOD. MAY REQUIRE DIFFERENT METHOD BASED
ON SEQUENCE. H1020 FASTENERS (PURLINS) & H1070 FASTENERS (JOISTS) WITH H2200
INSULATION WASHERS HAVE BEEN SUPPLIED 12" O.C. FOR INSULATION ATTACHMENT

HIGH EAVE PARAPET DETAIL

HIGH EAVE PARAPET DETAIL w/ WALL PANEL ABOVE AND BELOW
SEE WALL SHEETING ERECTION NOTES FOR WALL PANEL FASTENER LOCATIONS

EI3050

Detailer Notes:

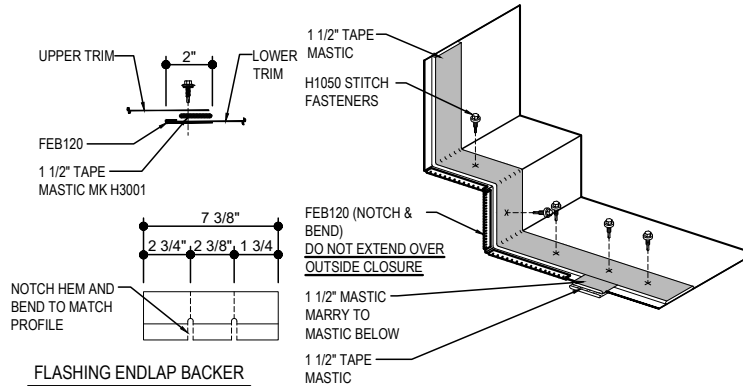
1) N/A

EI3070 - NON-STRUCTURAL PARAPET

[Download the DWG file by clicking here.](#)

HIGH EAVE LAP & FLASHING BACKER

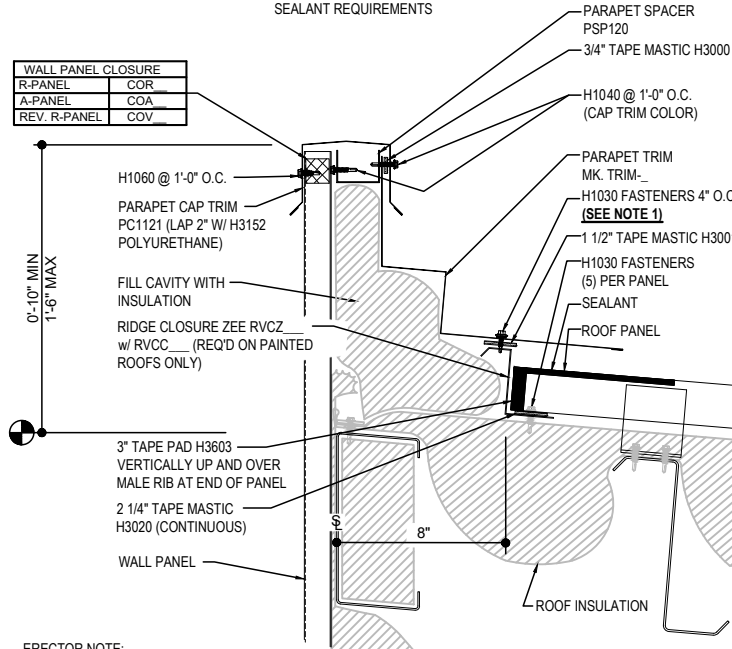
SLIDE FIELD CUT SECTION FLASHING ENDLAP BACKER ONTO THE LOWER TRIM PIECE. PLACE TAPE MASTIC NEXT TO HEM OF THE BACKER (NOT ON TOP OF HEM). APPLY CONTINUOUS BEAD OF CAULK 1" FROM END OF TRIM DOWN PROFILE OF TRIM. FASTEN LAP WITH STITCH FASTENERS AND POP RIVETS AS SHOWN.



FLASHING ENDLAP BACKER
FIELD CUT FROM STANDARD FEB120

NOTE 1: REFERENCE DETAIL
EA3076 FOR ADDITIONAL
REQUIRED TRIM LAP FASTENER

NOTE:
SEE ROOF PANEL BASIC
INSTALLATION DETAIL EA3011
FOR FASTENER AND
SEALANT REQUIREMENTS



ERECTOR NOTE:
INSULATION TIE-OFF SHOWN IS ONE METHOD. MAY REQUIRE DIFFERENT METHOD BASED ON SEQUENCE. H1020 FASTENERS (PURLINS) & H1070 FASTENERS (JOISTS) WITH H2200 INSULATION WASHERS HAVE BEEN SUPPLIED 12" O.C. FOR INSULATION ATTACHMENT

HIGH EAVE NON-STRUCTURAL PARAPET

HIGH EAVE NON-STRUCTURAL PARAPET DETAIL w/ WALL PANEL
SEE WALL SHEETING ERECTION NOTES FOR WALL PANEL FASTENER LOCATIONS

EI3070

Detailer Notes:

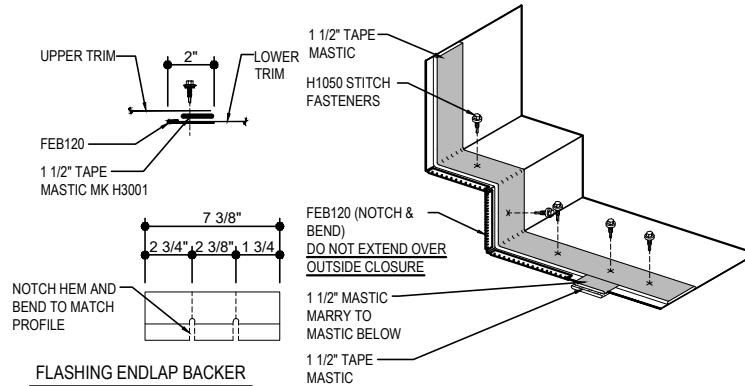
- 1) MIN AND MAX DIMENSION IS BASED ON ALLOWABLE CANTILEVER FROM DESIGN.
- 2) CUSTOM HIGH EAVE TRIM (TRIM-) WILL BE REQUIRED IN ALMOST EVERY NON STRUCTURAL SITUATION ADD OR ADJUST PARTS IN KIT ACCORDINGLY.

EI3610 - IMP WALL PANEL ABOVE

[Download the DWG file by clicking here.](#)

HIGH EAVE LAP & FLASHING BACKER

SLIDE FIELD CUT SECTION FLASHING ENDLAP BACKER ONTO THE LOWER TRIM PIECE. PLACE TAPE MASTIC NEXT TO HEM OF THE BACKER (NOT ON TOP OF HEM). APPLY CONTINUOUS BEAD OF CAULK 1" FROM END OF TRIM DOWN PROFILE OF TRIM. FASTEN LAP WITH STITCH FASTENERS AND POP RIVETS AS SHOWN.

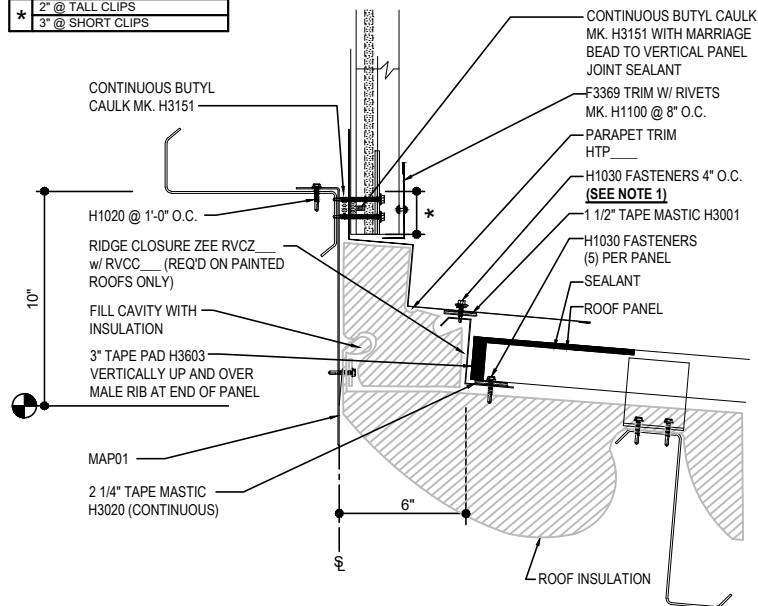


FLASHING ENDLAP BACKER
FIELD CUT FROM STANDARD FEB120

NOTE 1: REFERENCE DETAIL
EA3076 FOR ADDITIONAL
REQUIRED TRIM LAP FASTENER

NOTE:
SEE ROOF PANEL BASIC
INSTALLATION DETAIL EA3011
FOR FASTENER AND
SEALANT REQUIREMENTS

* 2" @ TALL CLIPS
3" @ SHORT CLIPS



ERECTOR NOTE:
INSULATION TIE-OFF SHOWN IS ONE METHOD. MAY REQUIRE DIFFERENT METHOD BASED ON SEQUENCE. H1020 FASTENERS (PURLINS) & H1070 FASTENERS (JOISTS) WITH H2200 INSULATION WASHERS HAVE BEEN SUPPLIED 12" O.C. FOR INSULATION ATTACHMENT

HIGH EAVE PARAPET DETAIL

HIGH EAVE PARAPET DETAIL w/ WALL PANEL ABOVE
SEE WALL SHEETING ERECTION NOTES FOR WALL PANEL FASTENER LOCATIONS

EI3610

Detailer Notes:

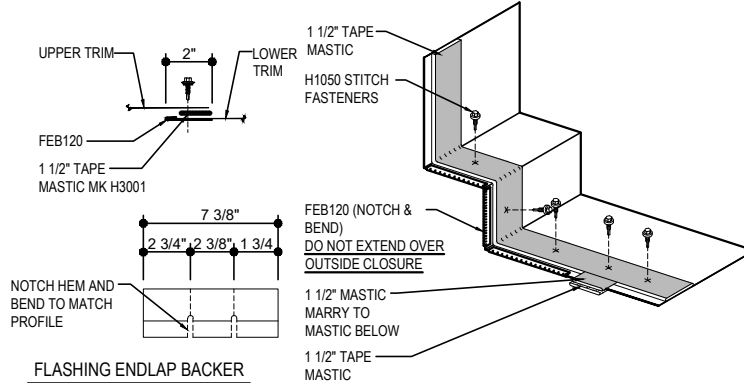
1) N/A

EI3650 - IMP WALL PANEL ABOVE & BELOW

[Download the DWG file by clicking here.](#)

HIGH EAVE LAP & FLASHING BACKER

SLIDE FIELD CUT SECTION FLASHING ENDLAP BACKER ONTO THE LOWER TRIM PIECE. PLACE TAPE MASTIC NEXT TO HEM OF THE BACKER (NOT ON TOP OF HEM). APPLY CONTINUOUS BEAD OF CAULK 1" FROM END OF TRIM DOWN PROFILE OF TRIM. FASTEN LAP WITH STITCH FASTENERS AND POP RIVETS AS SHOWN.

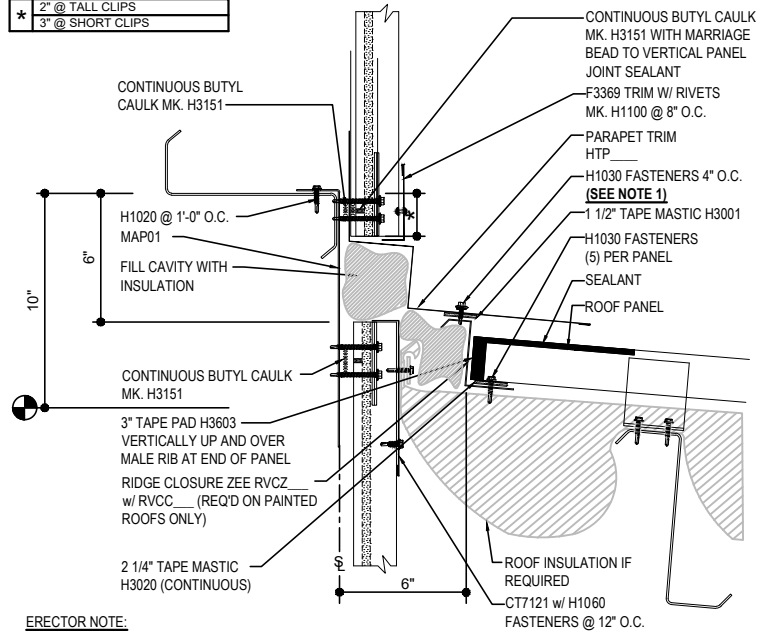


FLASHING ENDLAP BACKER
FIELD CUT FROM STANDARD FEB120

NOTE 1: REFERENCE DETAIL
EA3076 FOR ADDITIONAL
REQUIRED TRIM LAP FASTENER

NOTE:
SEE ROOF PANEL BASIC
INSTALLATION DETAIL EA3011
FOR FASTENER AND
SEALANT REQUIREMENTS

*	2" @ TALL CLIPS
	3" @ SHORT CLIPS



ERECTOR NOTE:
INSULATION TIE-OFF SHOWN IS ONE METHOD. MAY REQUIRE DIFFERENT METHOD BASED ON SEQUENCE. H1020 FASTENERS (PURLINS) & H1070 FASTENERS (JOISTS) WITH H2200 INSULATION WASHERS HAVE BEEN SUPPLIED 12" O.C. FOR INSULATION ATTACHMENT

HIGH EAVE PARAPET DETAIL

HIGH EAVE PARAPET DETAIL w/ WALL PANEL ABOVE AND BELOW
SEE WALL SHEETING ERECTION NOTES FOR WALL PANEL FASTENER LOCATIONS

EI3650

Detailer Notes:

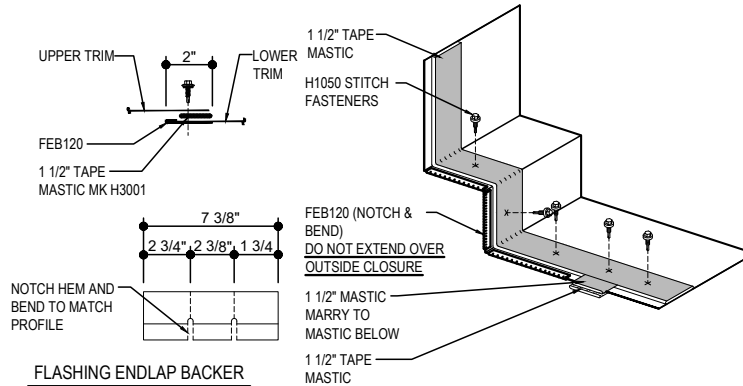
1) N/A

EI3670 - NON-STRUCTURAL PARAPET - IMP

[Download the DWG file by clicking here.](#)

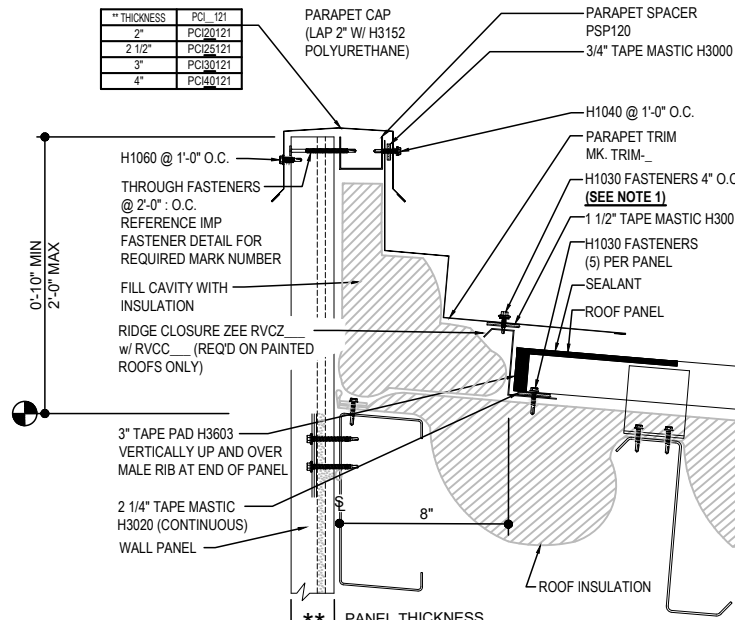
HIGH EAVE LAP & FLASHING BACKER

SLIDE FIELD CUT SECTION FLASHING ENDLAP BACKER ONTO THE LOWER TRIM PIECE. PLACE TAPE MASTIC NEXT TO HEM OF THE BACKER (NOT ON TOP OF HEM). APPLY CONTINUOUS BEAD OF CAULK 1" FROM END OF TRIM DOWN PROFILE OF TRIM. FASTEN LAP WITH STITCH FASTENERS AND POP RIVETS AS SHOWN.



NOTE 1: REFERENCE DETAIL
EA3076 FOR ADDITIONAL
REQUIRED TRIM LAP FASTENER

NOTE:
SEE ROOF PANEL BASIC
INSTALLATION DETAIL EA3011
FOR FASTENER AND
SEALANT REQUIREMENTS



ERECTOR NOTE:
INSULATION TIE-OFF SHOWN IS ONE METHOD. MAY REQUIRE DIFFERENT METHOD BASED ON SEQUENCE. H1020 FASTENERS (PURLINS) & H1070 FASTENERS (JOISTS) WITH H2200 INSULATION WASHERS HAVE BEEN SUPPLIED 12" O.C. FOR INSULATION ATTACHMENT

HIGH EAVE NON-STRUCTURAL PARAPET

HIGH EAVE NON-STRUCTURAL PARAPET DETAIL w/ WALL PANEL
SEE WALL SHEETING ERECTION NOTES FOR WALL PANEL FASTENER LOCATIONS

EI3670

Detailer Notes:

- 1) MIN AND MAX DIMENSION IS BASED ON ALLOWABLE CANTILEVER FROM DESIGN.
- 2) CUSTOM HIGH EAVE TRIM (TRIM-) WILL BE REQUIRED IN ALMOST EVERY NON STRUCTURAL SITUATION ADD OR ADJUST PARTS IN KIT ACCORDINGLY.