

PARAPET GUTTER

- EK6020 - LOW EAVE PARAPET GUTTER

EK6040 - LOW EAVE PARAPET GUTTER at MASONRY WALL

EK6020 - LOW EAVE PARAPET GUTTER

[Download the DWG file by clicking here.](#)

PARAPET GUTTER INSTALLATION

ERECTOR NOTE

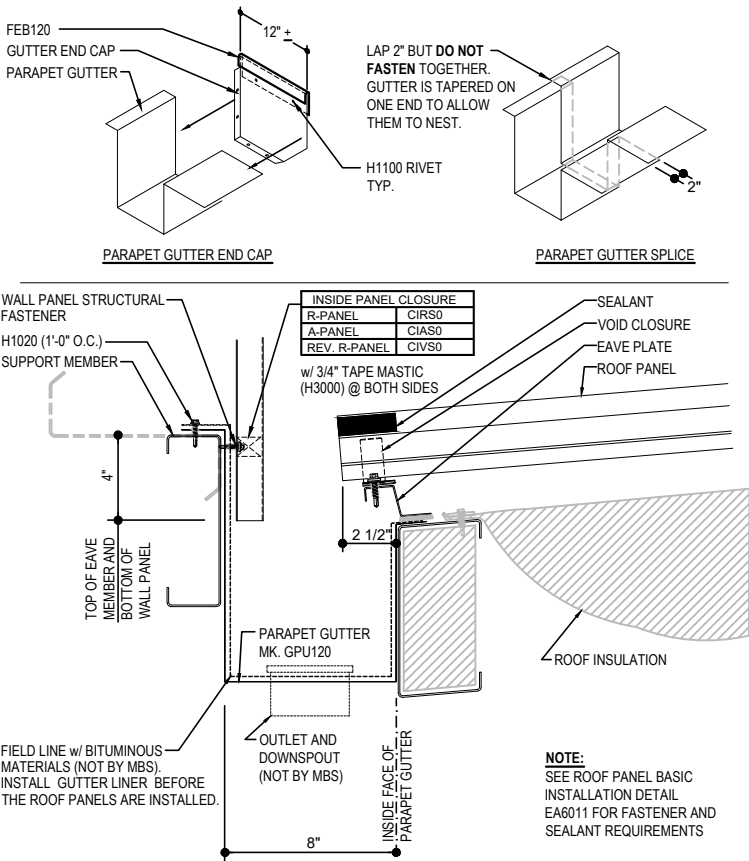
PARAPET GUTTERS ARE DESIGNED TO FUNCTION AS FREE-FLOWING GUTTER SYSTEMS. THEY MUST BE DESIGNED WITH ADEQUATE DRAINAGE AND KEPT FREE OF DEBRIS AND OTHER MATERIALS THAT MAY RESTRICT WATER FLOW. IT IS RECOMMENDED TO USE HEAT TAPE TO REDUCE THE LIKELIHOOD OF ICE AND SNOW BUILD UP IN THE GUTTER.

RUBBER LINER FOR PARAPET GUTTERS IS NOT SUPPLIED BY MBS. INSTALL BEFORE THE ROOF PANELS AND BACKER PANELS ARE INSTALLED.

PARAPET GUTTER SPLICE AND ENDCAP PREPARATION

ATTACH THE PARAPET GUTTER END CAP TO THE PARAPET GUTTER USING (2) H1100 RIVETS IN EACH TAB. USING **GPC L OR R** PAY CLOSE ATTENTION TO THE DETAIL AND THE ORIENTATION OF THE PARAPET END CAP. THE TABS ON THE CAP SHOULD BE AT THE BOTTOM AND BACK OF GUTTER AS SHOWN BELOW. IF PREFERRED, INSTALL ENDCAPS ON GROUND BEFORE SETTING THE PARAPET GUTTER IN PLACE.

ONCE ENDCAP IS INSTALLED, SLIDE A 12"± PIECE OF FEB120 ALONG THE TOP OF THE ENDCAP. ATTACH WITH (2) H1100 RIVETS. THIS WILL ACT AS A BACKER FOR PANEL ATTACHMENT.



PARAPET GUTTER DETAIL

LOW EAVE DETAIL w/ PARAPET GUTTER
SEE WALL SHEETING ERECTION NOTES FOR WALL PANEL FASTENER LOCATIONS

EK6020

Detailer Notes:

1) N/A

EK6040 - LOW EAVE PARAPET GUTTER at MASONRY WALL

[Download the DWG file by clicking here.](#)

PARAPET GUTTER INSTALLATION

ERECTOR NOTE

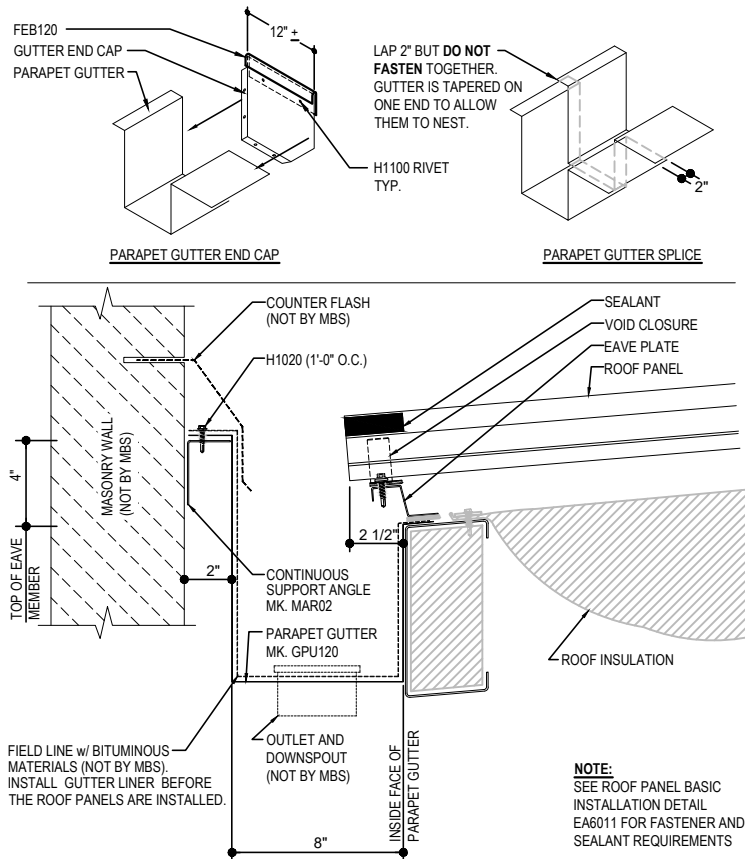
PARAPET GUTTERS ARE DESIGNED TO FUNCTION AS FREE-FLOWING GUTTER SYSTEMS. THEY MUST BE DESIGNED WITH ADEQUATE DRAINAGE AND KEPT FREE OF DEBRIS AND OTHER MATERIALS THAT MAY RESTRICT WATER FLOW. IT IS RECOMMENDED TO USE HEAT TAPE TO REDUCE THE LIKELIHOOD OF ICE AND SNOW BUILD UP IN THE GUTTER.

RUBBER LINER FOR PARAPET GUTTERS IS NOT SUPPLIED BY MBS. INSTALL BEFORE THE ROOF PANELS AND BACKER PANELS ARE INSTALLED.

PARAPET GUTTER SPLICE AND ENDCAP PREPARATION

ATTACH THE PARAPET GUTTER END CAP TO THE PARAPET GUTTER USING (2) H1100 RIVETS IN EACH TAB. USING **GPC L OR R** PAY CLOSE ATTENTION TO THE DETAIL AND THE ORIENTATION OF THE PARAPET END CAP. THE TABS ON THE CAP SHOULD BE AT THE BOTTOM AND BACK OF GUTTER AS SHOWN BELOW. IF PREFERRED, INSTALL ENDCAPS ON GROUND BEFORE SETTING THE PARAPET GUTTER IN PLACE.

ONCE ENDCAP IS INSTALLED, SLIDE A 12"± PIECE OF FEB120 ALONG THE TOP OF THE ENDCAP. ATTACH WITH (2) H1100 RIVETS. THIS WILL ACT AS A BACKER FOR PANEL ATTACHMENT.



PARAPET GUTTER DETAIL

LOW EAVE DETAIL w/ PARAPET GUTTER at MASONRY WALL

EK6040

Detailer Notes:

1) N/A