

TRANSLUCENT PANELS

EM6010 - CFR TRANSLUCENT PANEL

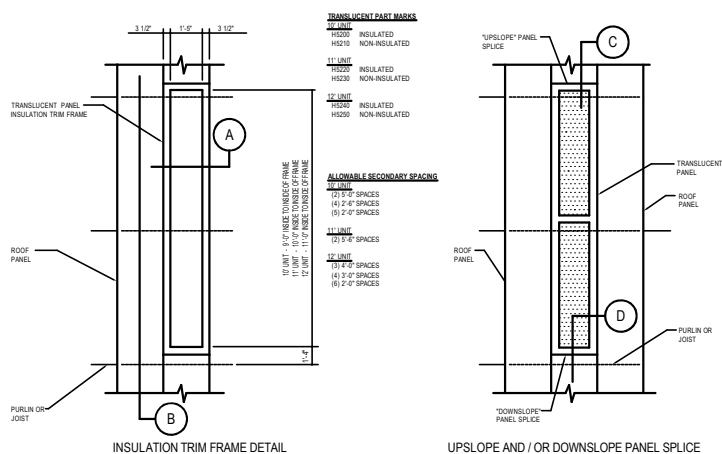
EM6010 - CFR ROOF

[Download the DWG file by clicking here.](#)

C.F.R. TRANSLUCENT ROOF PANEL INSTALLATION INSTRUCTIONS

ERECTOR NOTE: THE DETAILS SHOWN HERE REFLECT LEFT-TO-RIGHT PANEL ERECTION SEQUENCE. IF PANELS ARE BEING INSTALLED FROM RIGHT-TO-LEFT, THE DETAILS ARE OPPOSITE HAND OF WHAT IS SHOWN.

TRANSLUCENT PANEL LAYOUT - PLAN VIEWS

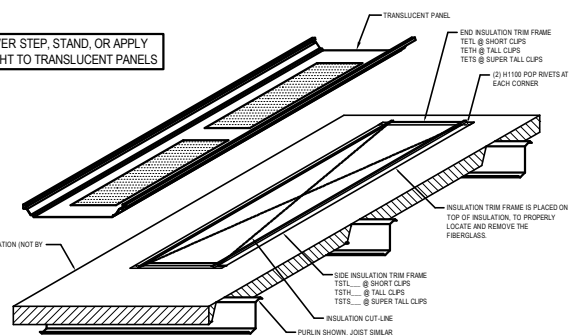


LEFT-TO-RIGHT
ERECTION SEQUENCE SHOWN

ERECTION NOTES:

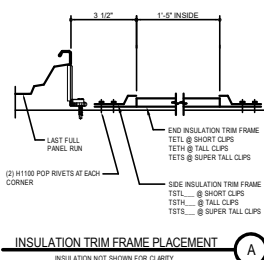
- 1) INITIAL METAL ROOF PANELS (UP TO THE TRANSPARENT PANEL LOCATION).
- 2) PRE-ASSEMBLE INSULATION TRIM FRAME AS SHOWN IN THE DETAILS BELOW.
- 3) PLACE FRAME ON TOP OF THE ROOF INSULATION. USE DIMENSIONS BELOW TO PROPERLY LOCATE FRAME ON THE PURLS/JOISTS.
- 4) ATTACH THE FRAME TO PURLS WITH (4) H1020TS OR TO JOIST WITH (4) H1020S.
- 5) REMOVE THE FIBERGLASS INSULATION FROM THE BACKING INSIDE THE FRAME AREA.
- 6) MAKE AN X CUT IN THE LINER AS SHOWN.
- 7) FASTEN INSULATION BACKING TO FRAME USING DOUBLE Faced TAPE (BY OTHERS).
- 8) WHEN TRANSPARENT PANELS ARE USED AT THE RIDGE OR EAVE GABLE PARAPET, FIELD NOTCH TOP OF PANEL TO MATCH ADJACENT PANEL NOTCHES.

NEVER STEP, STAND, OR APPLY
WEIGHT TO TRANSLUCENT PANELS

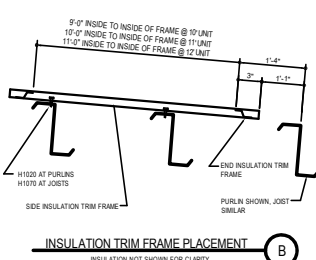


GENERAL NOTES:

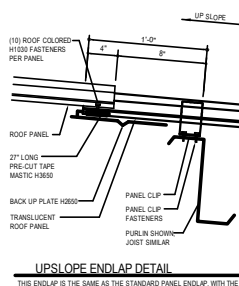
- 1) TRANSLUCENT PANELS MUST BE HAND CRIMPED TO MECHANICALLY SEAMED THE FULL LENGTH AND ON BOTH SIDES, WITH THE PROPER TOOL, TO ACHIEVE A MINIMUM OF A HALF LOCK SEAM PROFILE.
- 2) TRANSLUCENT PANELS INSTALLED END TO END SHOULD BE SPACED SO THAT THE METAL PANELS ABOVE, BETWEEN AND BELOW ARE RESTING ON A MINIMUM OF (3) PURLINS, PREFERABLY (4). NO SMPLE-SPAN ROOF PANEL CONDITIONS ARE ALLOWED.
- 3) TRANSLUCENT PANELS SHALL NOT BE PLACED SIDE BY SIDE. A MINIMUM OF (4) METAL PANELS ARE REQUIRED BETWEEN SIDES OF MULTIPLE TRANSLUCENT PANELS LOCATIONS.
- 4) TRANSLUCENT PANELS SHALL NOT BE PLACED FROM EAVE TO EAVE.
- 5) TRANSLUCENT PANELS SHALL NOT BE PLACED AT THE LOW EAVE OF THE BUILDING.
- 6) THE LOCATION OF THE FIRST TRANSLUCENT PANEL FROM THE LOW EAVE SHOULD BE SET SO THAT THE LOW EAVE METAL PANEL IS SUPPORTED BY (4) PURLINS (OR APPROXIMATELY 5 FEET).
- 7) TRANSLUCENT PANELS WITH EITHER A LOW SLOPE OR FLAT ROOF APPROVAL ARE ONLY ALLOWED WITH 5/8" SPACING.



INSULATION TRIM FRAME PLACEMENT

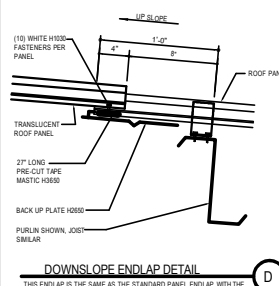


INSULATION TRIM FRAME PLACEMENT



UPSLOPE ENDLAP DETAIL

THIS ENDLAP IS THE SAME AS THE STANDARD PANEL ENDLAP EXCEPT FOR THE TRANSLUCENT PANEL



DOWNSIDE OF ENDIAP DETAIL

THIS ENDLAP IS THE SAME AS THE STANDARD PANEL ENDLAP, WITH THE EXCEPTION OF THE TRANSLUCENT RING.

TRANSLUCENT PANEL

TRANSLUCENT
TRAPEZOIDAL PANEL

EM6010

Detailer Notes:

- 1) DETAIL IS USED FOR ALL CFR RATED & NON-RATED JOBS.