

EAVE & RAKE EXTENSIONS

- EO3005 - SOFFIT PANEL ERECTION DETAIL
 - EO3007 - FLAT SL PANEL ATTACHMENT DETAIL
 - EO3010 - LOW EAVE EXTENSION
 - EO3011 - LOW EAVE EXTENSION - IMP WALL
 - EO3214 - EAVE EXTENSION TERMINATION - INSET-FLUSH
 - EO3215 - EAVE EXTENSION TERMINATION - BYPASS
 - EO3308 - RAKE EXTENSION WITH FLAT SL PANEL SOFFIT
 - EO3309 - RAKE EXTENSION - IMP WALL WITH FLAT SL PANEL SOFFIT
 - EO3310 - RAKE EXTENSION
 - EO3311 - RAKE EXTENSION - IMP WALL
 - EO3312 - RAKE EXTENSION TERMINATION - LOW EAVE
 - EO3314 - RAKE EXTENSION TERMINATION - HIGH EAVE
 - EO3410 - HIGH EAVE EXTENSION
 - EO3411 - HIGH EAVE EXTENSION - IMP WALL
 - EO3610 - SOFFIT PANEL ENDLAP
 - EO3615 - SOFFIT PANEL - RIDGE UP TO 1-12
 - EO3616 - SOFFIT PANEL - RIDGE GREATER THAN 1-12
-

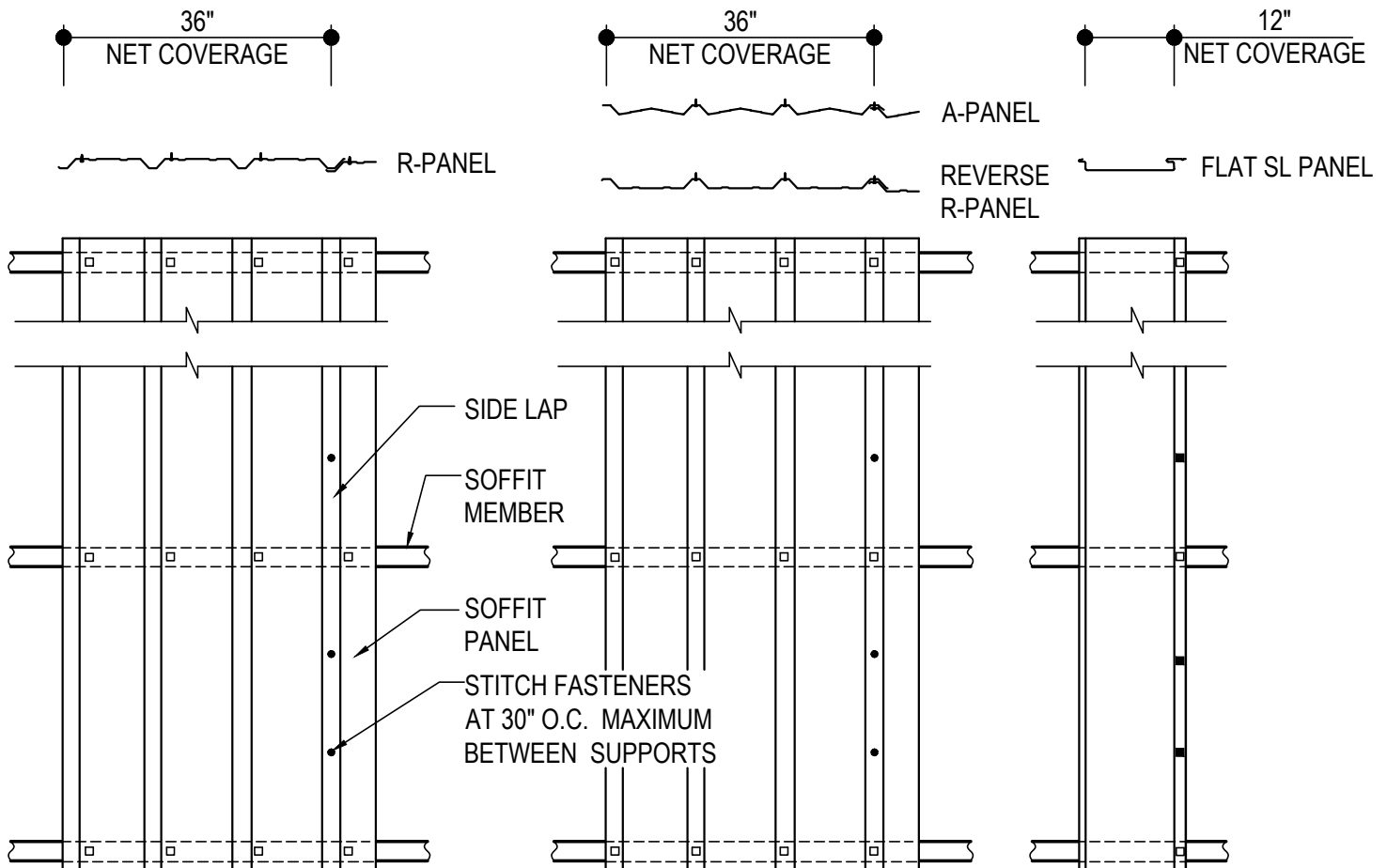
EO3005 - SOFFIT PANEL ERECTION DETAIL

[Download the DWG file by clicking here.](#)

- H1060 STITCH FASTENER
- ▣ H1040 STRUCTURAL FASTENER
- NEGATIVE LOAD CLIP (MK. NLC-1)
(SEE FLAT SL PANEL ATTACHMENT DETAIL)

ERECTOR NOTE:

ERECTION OF THE SOFFIT PANEL MUST BE COORDINATED PROPERLY WITH THE SOFFIT TRIM CONDITIONS AS SHOWN IN THE ERECTION DETAILS. PLACEMENT AND ORIENTATION OF THE SOFFIT PANEL MAY VARY BY CONDITION AND SUPPORT MEMBERS MAY ALSO VARY. USE THIS FASTENING PATTERN UNLESS TRIM SECTION SHOWS A SPECIFIC PATTERN.



SOFFIT PANEL ERECTION DETAIL

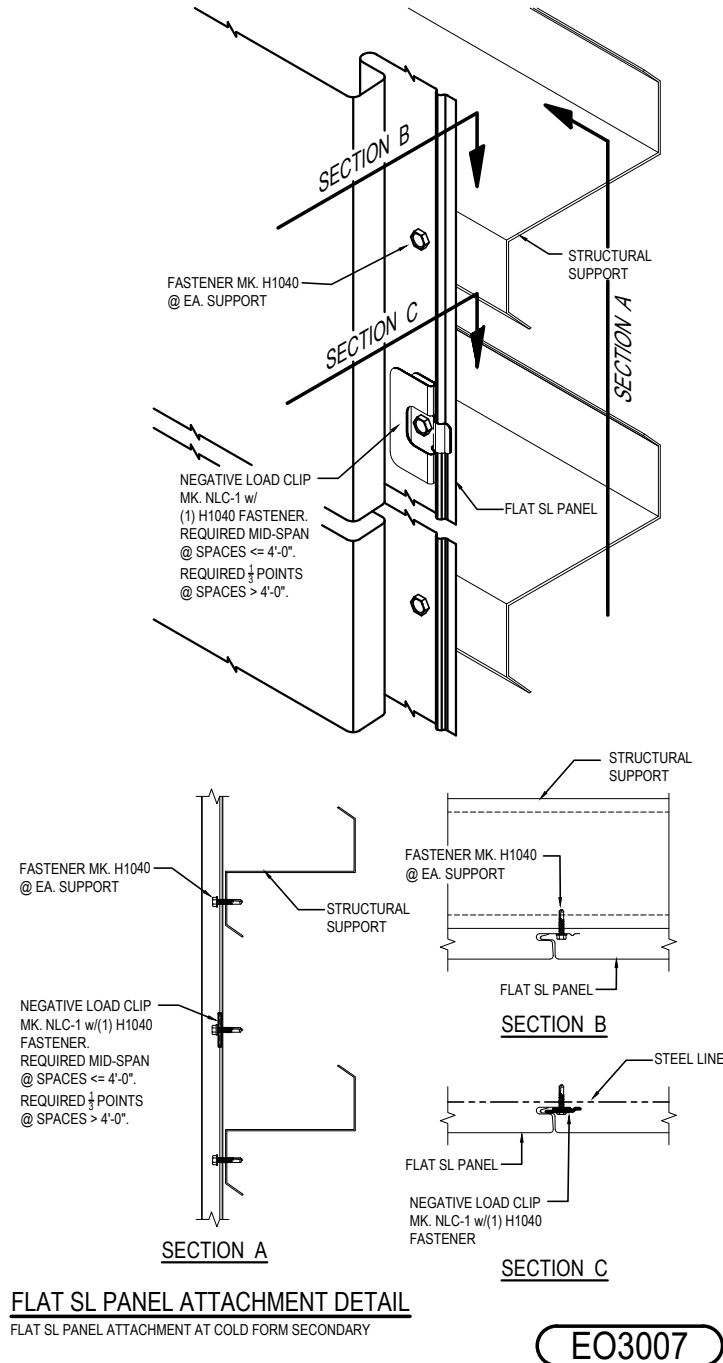
EO3005

Detailer Notes:

- 1) THIS DETAIL IS A DUPLICATE OF DO0005, DQ0005, EO6005, EQ3005, EQ6005, HK0005, & IK0005. DUPLICATE DETAILS ARE TO ENSURE THAT THEY ARE PLACED IN ORDER IN THE ERECTION DRAWINGS.

EO3007 - FLAT SL PANEL ATTACHMENT DETAIL

[Download the DWG file by clicking here.](#)



Detailer Notes:

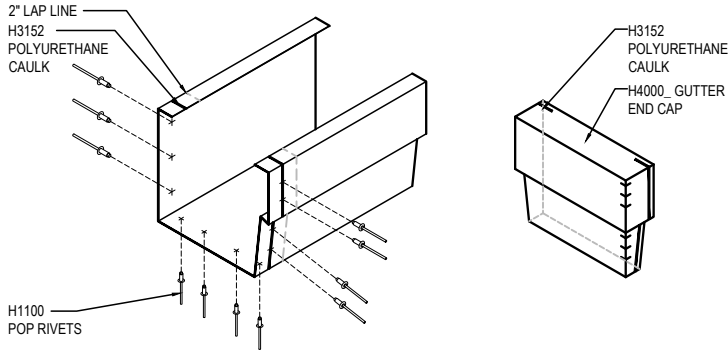
- 1) THIS DETAIL IS A DUPLICATE OF DO0007, DQ0007, EO6007, EQ3007, EQ6007, HK0007, & IK0007. DUPLICATE DETAILS ARE TO ENSURE THAT THEY ARE PLACED IN ORDER IN THE ERECTION DRAWINGS.

EO3010 - LOW EAVE EXTENSION

[Download the DWG file by clicking here.](#)

GUTTER LAP & END CAP

APPLY BEAD OF POLYURETHANE CAULK 1" FROM END OF TRIM AND LAP SECTIONS 2" AND FASTEN AS SHOWN. TO TERMINATE THE GUTTER APPLY POLYURETHANE CAULK TO THREE SIDES OF END CAP AND TOP RETURN AREA AS SHOWN AND INSERT 1/2" INTO END OF GUTTER. ATTACH WITH RIVETS SAME AS END LAP.

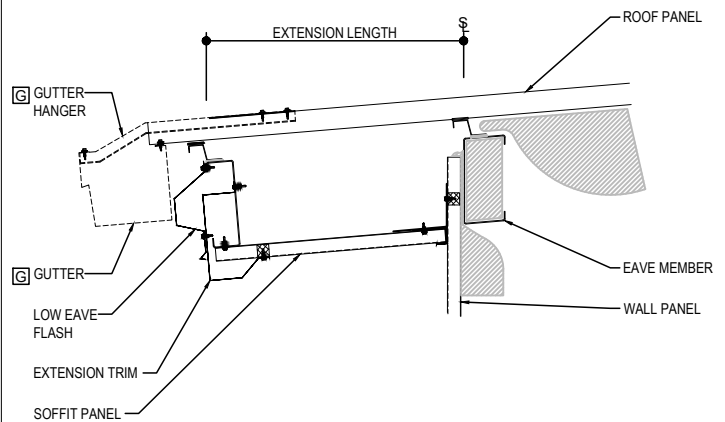
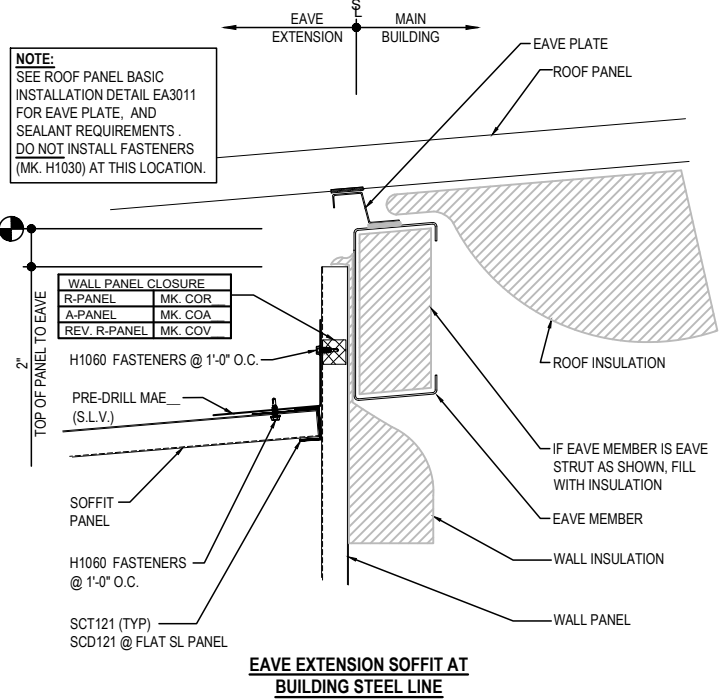
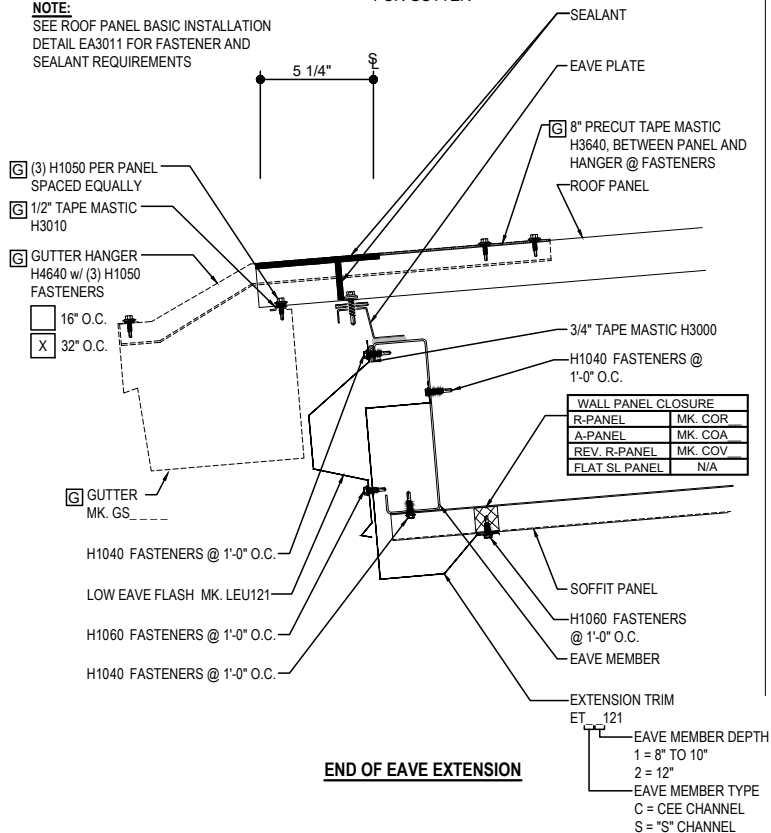


NOTE 1: PANEL RIB MUST BE SEAMED PRIOR TO INSTALLING GUTTER BRACKET!

GUTTER SHOWN IF REQ'D

REQ'D ONLY FOR GUTTER

NOTE: SEE ROOF PANEL BASIC INSTALLATION DETAIL EA3011 FOR FASTENER AND SEALANT REQUIREMENTS



LOW EAVE EXTENSION

EAVE WITH OR WITHOUT GUTTER DETAIL w/ SOFFIT PANELS
SEE WALL SHEETING ERECTION NOTES FOR WALL PANEL FASTENER LOCATIONS

EO3010

Detailer Notes:

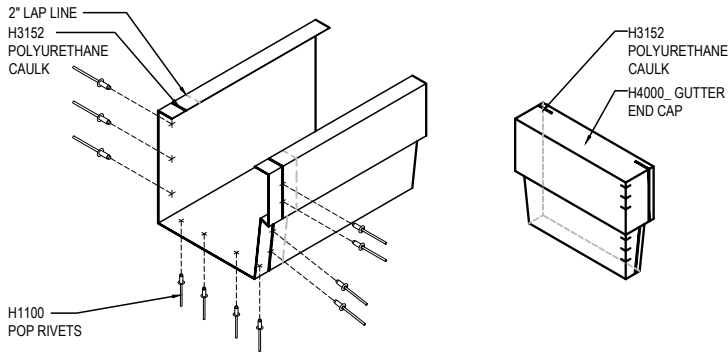
1) N/A

EO3011 - LOW EAVE EXTENSION - IMP WALL

[Download the DWG file by clicking here.](#)

GUTTER LAP & END CAP

APPLY BEAD OF POLYURETHANE CAULK 1" FROM END OF TRIM AND LAP SECTIONS 2" AND FASTEN AS SHOWN. TO TERMINATE THE GUTTER APPLY POLYURETHANE CAULK TO THREE SIDES OF END CAP AND TOP RETURN AREA AS SHOWN AND INSERT 1/2" INTO END OF GUTTER. ATTACH WITH RIVETS SAME AS END LAP.

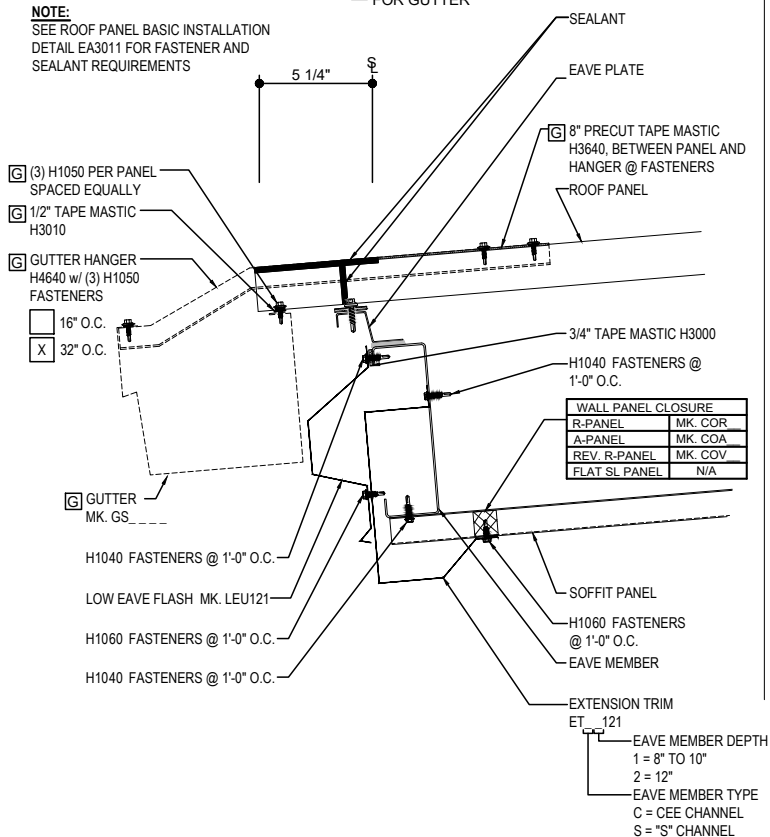


NOTE 1: PANEL RIB MUST BE SEAMED PRIOR TO INSTALLING GUTTER BRACKET!

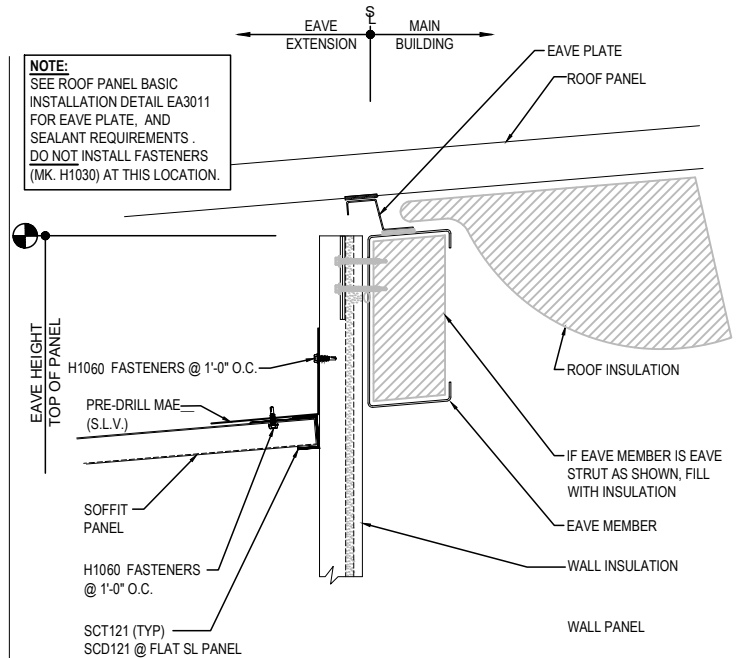
GUTTER SHOWN IF REQ'D

REQ'D ONLY FOR GUTTER

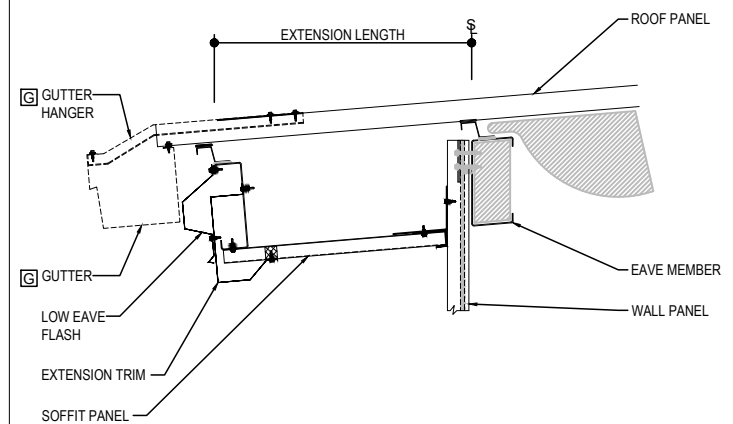
NOTE: SEE ROOF PANEL BASIC INSTALLATION DETAIL EA3011 FOR FASTENER AND SEALANT REQUIREMENTS



NOTE: SEE ROOF PANEL BASIC INSTALLATION DETAIL EA3011 FOR EAVE PLATE, AND SEALANT REQUIREMENTS. DO NOT INSTALL FASTENERS (MK. H1030) AT THIS LOCATION.



EAVE EXTENSION SOFFIT AT BUILDING STEEL LINE



LOW EAVE EXTENSION - IMP WALL

EAVE WITH OR WITHOUT GUTTER DETAIL w/ SOFFIT PANELS
SEE WALL SHEETING ERECTION NOTES FOR WALL PANEL FASTENER LOCATIONS

EO3011

Detailer Notes:

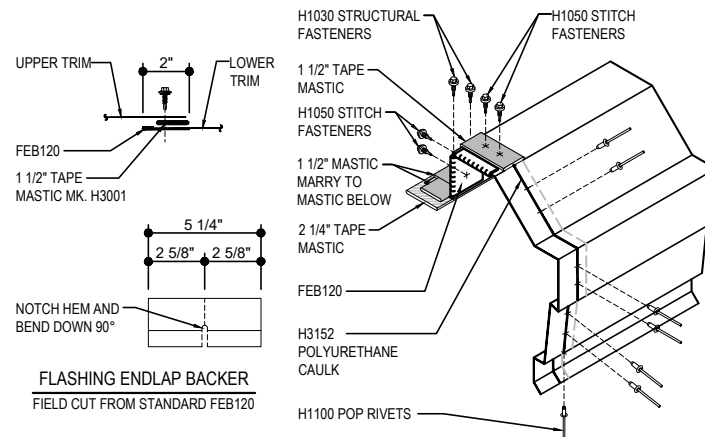
1) N/A

EO3215 - EAVE EXTENSION TERMINATION - BYPASS

[Download the DWG file by clicking here.](#)

RAKE LAP & FLASHING BACKER

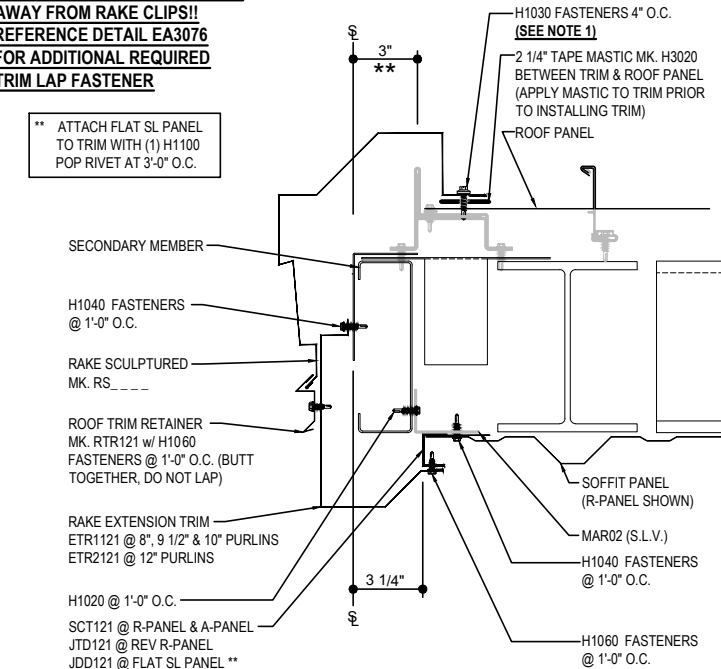
SLIDE FIELD CUT SECTION OF FLASHING ENDLAP BACKER ONTO THE LOWER TRIM PIECE AS SHOWN BELOW. PLACE TAPE MASTIC NEXT TO HEM OF THE BACKER (NOT ON TOP OF HEM). APPLY CONTINUOUS BEAD OF CAULK 1" FROM END OF TRIM DOWN PROFILE OF TRIM. FASTEN LAP WITH STITCH FASTENERS AND POP RIVETS AS SHOWN. ROOF STRUCTURAL FASTENERS SHOULD BE USED TO FASTEN THROUGH PANEL FLAT INTO RAKE ANGLE.



NOTE 1: KEEP FASTENERS 2 1/2"

AWAY FROM RAKE CLIPS!!
REFERENCE DETAIL EA3076
FOR ADDITIONAL REQUIRED
TRIM LAP FASTENER

** ATTACH FLAT SL PANEL TO TRIM WITH (1) H1100 POP RIVET AT 3'-0" O.C.



EAVE EXTENSION TERMINATION - BYPASS

RAKE CONTINUATION AT EAVE EXTENSION

EO3215

Detailer Notes:

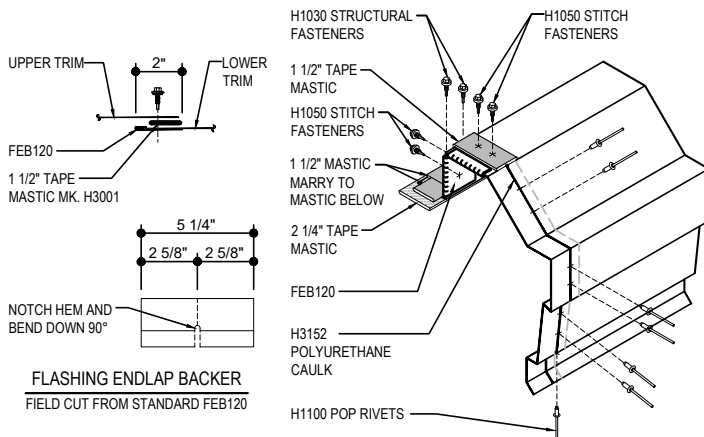
- 1) USE THIS DETAIL WITH BYPASS OR RIGID FRAME ENDWALL CONDITIONS.

EO3308- RAKE EXTENSION WITH FLAT SL PANEL SOFFIT

[Download the DWG file by clicking here.](#)

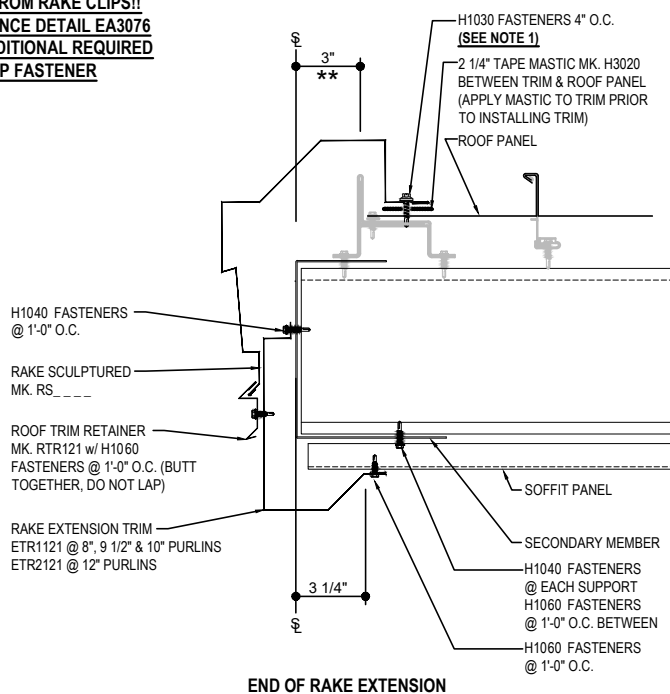
RAKE LAP & FLASHING BACKER

SLIDE FIELD CUT SECTION OF FLASHING ENLAP BACKER ONTO THE LOWER TRIM PIECE AS SHOWN BELOW. PLACE TAPE MASTIC NEXT TO HEM OF THE BACKER (NOT ON TOP OF HEM). APPLY CONTINUOUS BEAD OF CAULK 1" FROM END OF TRIM DOWN PROFILE OF TRIM. FASTEN LAP WITH STITCH FASTENERS AND POP RIVETS AS SHOWN. ROOF STRUCTURAL FASTENERS SHOULD BE USED TO FASTEN THROUGH PANEL FLAT INTO RAKE ANGLE.

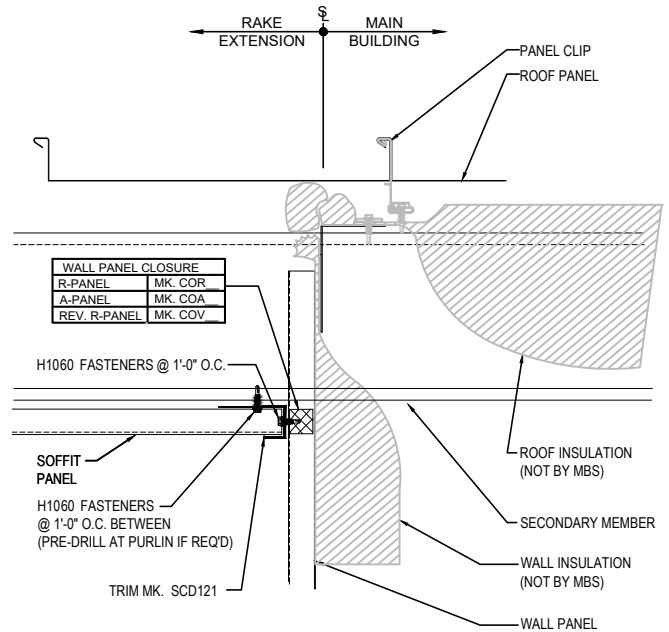


NOTE 1: KEEP FASTENERS 2 1/2"

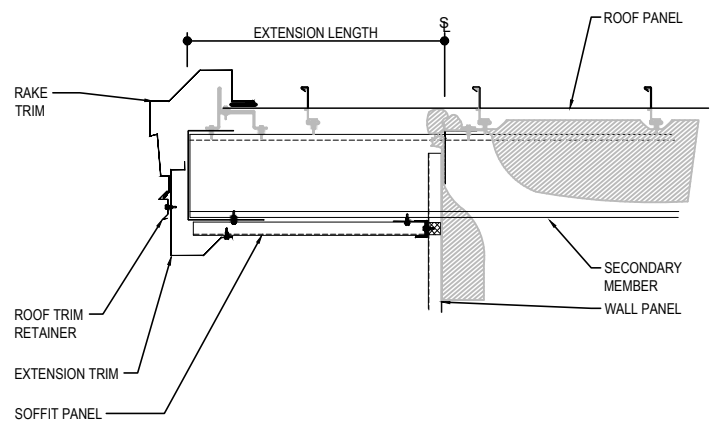
AWAY FROM RAKE CLIPS!!
REFERENCE DETAIL EA3076
FOR ADDITIONAL REQUIRED
TRIM LAP FASTENER



END OF RAKE EXTENSION



RAKE EXTENSION SOFFIT AT BUILDING STEEL LINE



RAKE EXTENSION DETAIL w / FLAT SL PANEL SOFFIT

RAKE DETAIL w / FLAT SL SOFFIT PANEL PERPENDICULAR TO WALL
SEE WALL SHEETING ERECTION NOTES FOR WALL PANEL FASTENER LOCATIONS

EO3308

Detailer Notes:

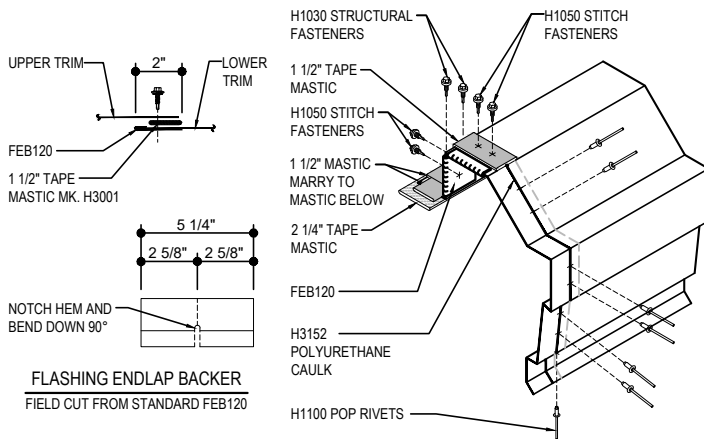
1) N/A

EO3309 - RAKE EXTENSION - IMP WALL WITH FLAT SL PANEL SOFFIT

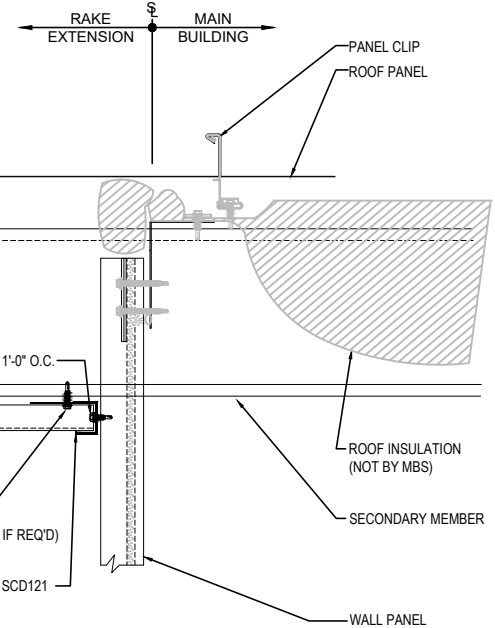
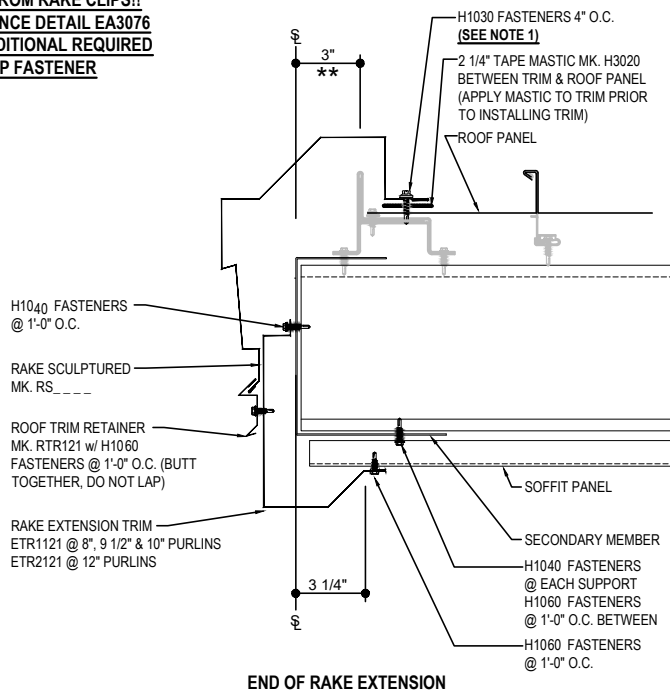
[Download the DWG file by clicking here.](#)

RAKE LAP & FLASHING BACKER

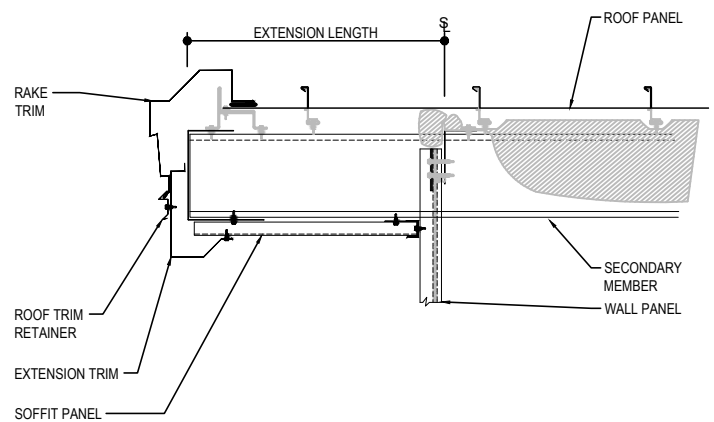
SLIDE FIELD CUT SECTION OF FLASHING ENLAP BACKER ONTO THE LOWER TRIM PIECE AS SHOWN BELOW. PLACE TAPE MASTIC NEXT TO HEM OF THE BACKER (NOT ON TOP OF HEM). APPLY CONTINUOUS BEAD OF CAULK 1" FROM END OF TRIM DOWN PROFILE OF TRIM. FASTEN LAP WITH STITCH FASTENERS AND POP RIVETS AS SHOWN. ROOF STRUCTURAL FASTENERS SHOULD BE USED TO FASTEN THROUGH PANEL FLAT INTO RAKE ANGLE.



NOTE 1: KEEP FASTENERS 2 1/2" AWAY FROM RAKE CLIPS!!
REFERENCE DETAIL EA3076 FOR ADDITIONAL REQUIRED TRIM LAP FASTENER



RAKE EXTENSION SOFFIT AT BUILDING STEEL LINE



RAKE EXTENSION - IMP WALL w / FLAT SL PANEL SOFFIT

RAKE DETAIL w / FLAT SL PANEL PERPENDICULAR TO WALL
SEE WALL SHEETING ERECTION NOTES FOR WALL PANEL FASTENER LOCATIONS

EO3309

Detailer Notes:

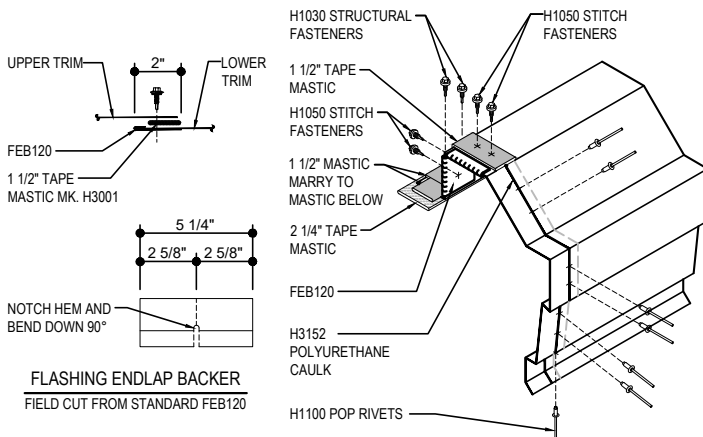
1) N/A

EO3310 - RAKE EXTENSION

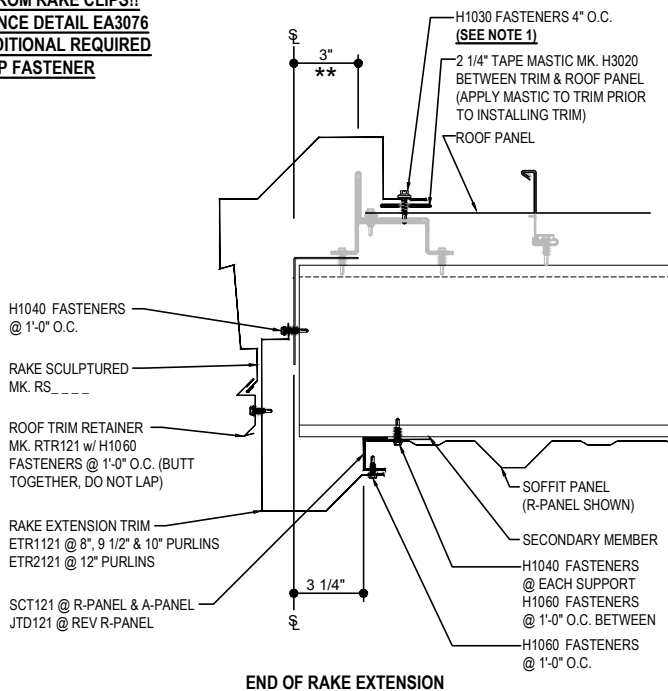
[Download the DWG file by clicking here.](#)

RAKE LAP & FLASHING BACKER

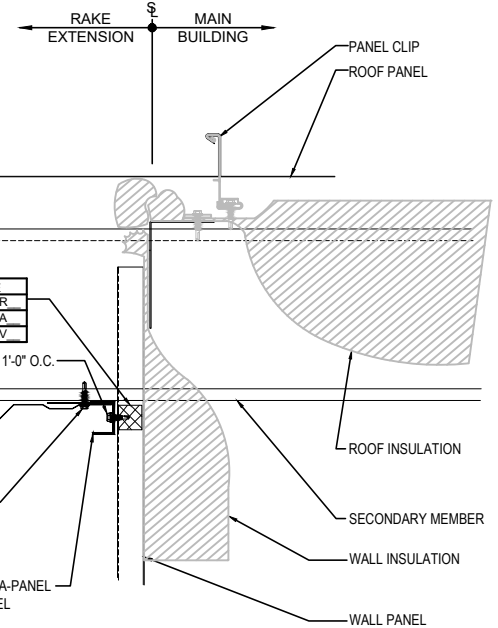
SLIDE FIELD CUT SECTION OF FLASHING ENLAP BACKER ONTO THE LOWER TRIM PIECE AS SHOWN BELOW. PLACE TAPE MASTIC NEXT TO HEM OF THE BACKER (NOT ON TOP OF HEM). APPLY CONTINUOUS BEAD OF CAULK 1" FROM END OF TRIM DOWN PROFILE OF TRIM. FASTEN LAP WITH STITCH FASTENERS AND POP RIVETS AS SHOWN. ROOF STRUCTURAL FASTENERS SHOULD BE USED TO FASTEN THROUGH PANEL FLAT INTO RAKE ANGLE.



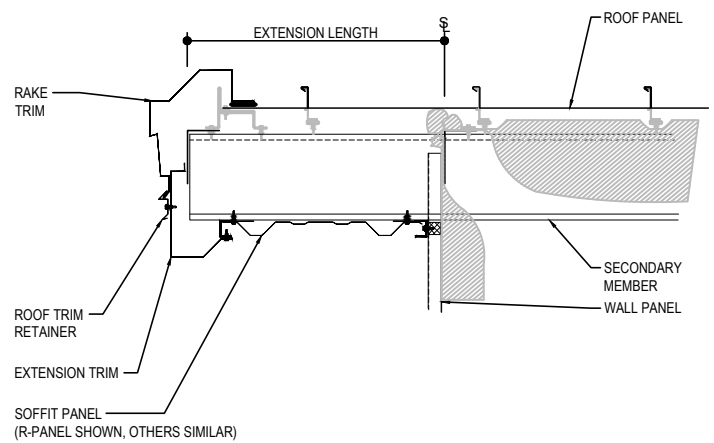
NOTE 1: KEEP FASTENERS 2 1/2" AWAY FROM RAKE CLIPS!!
REFERENCE DETAIL EA3076 FOR ADDITIONAL REQUIRED TRIM LAP FASTENER



END OF RAKE EXTENSION



RAKE EXTENSION SOFFIT AT BUILDING STEEL LINE



RAKE EXTENSION DETAIL

RAKE DETAIL w/ SOFFIT PANELS
SEE WALL SHEETING ERECTION NOTES FOR WALL PANEL FASTENER LOCATIONS

EO3310

Detailer Notes:

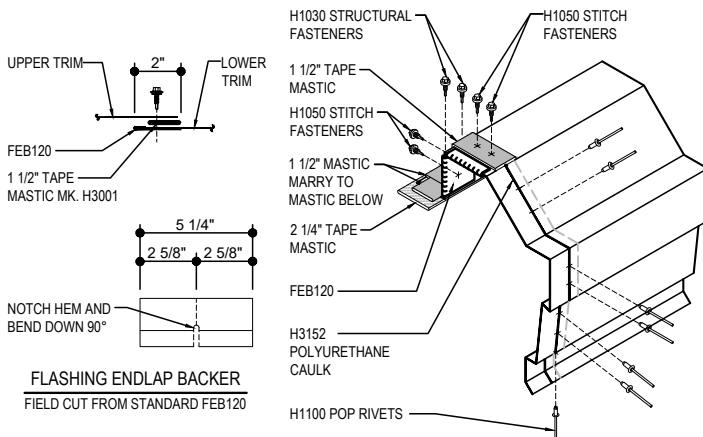
1) N/A

EO3311 - RAKE EXTENSION - IMP WALL

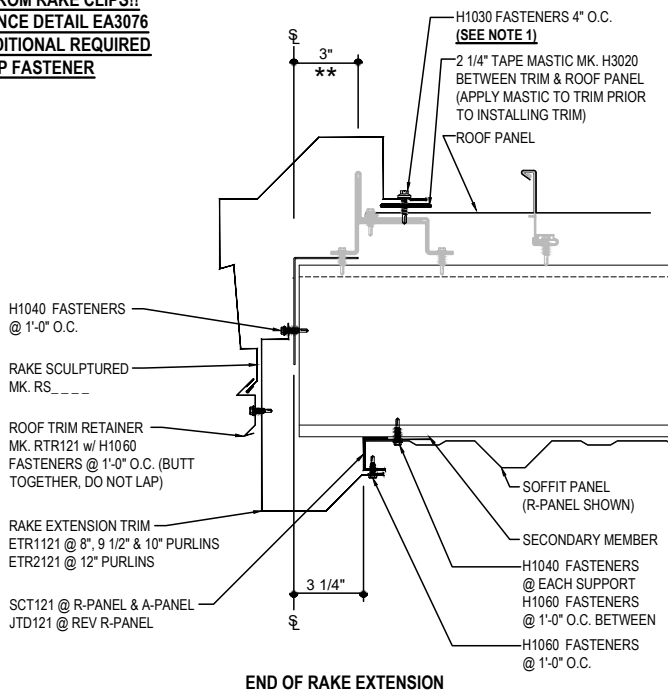
[Download the DWG file by clicking here.](#)

RAKE LAP & FLASHING BACKER

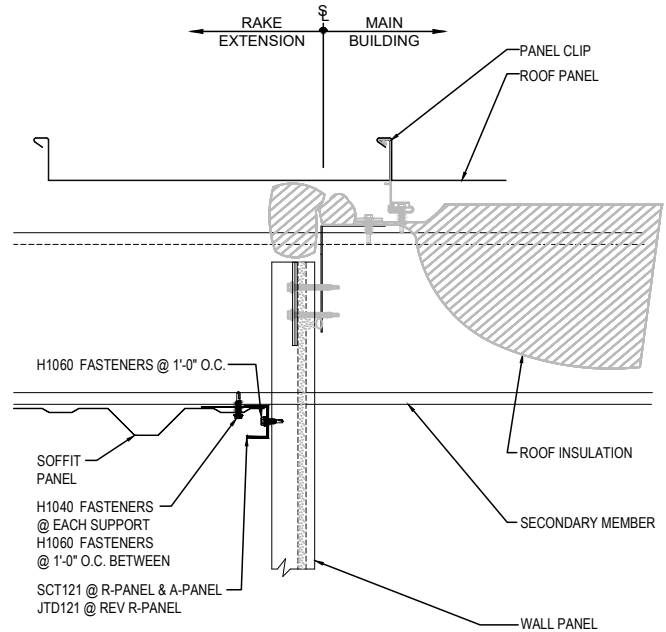
SLIDE FIELD CUT SECTION OF FLASHING ENLAP BACKER ONTO THE LOWER TRIM PIECE AS SHOWN BELOW. PLACE TAPE MASTIC NEXT TO HEM OF THE BACKER (NOT ON TOP OF HEM). APPLY CONTINUOUS BEAD OF CAULK 1" FROM END OF TRIM DOWN PROFILE OF TRIM. FASTEN LAP WITH STITCH FASTENERS AND POP RIVETS AS SHOWN. ROOF STRUCTURAL FASTENERS SHOULD BE USED TO FASTEN THROUGH PANEL FLAT INTO RAKE ANGLE.



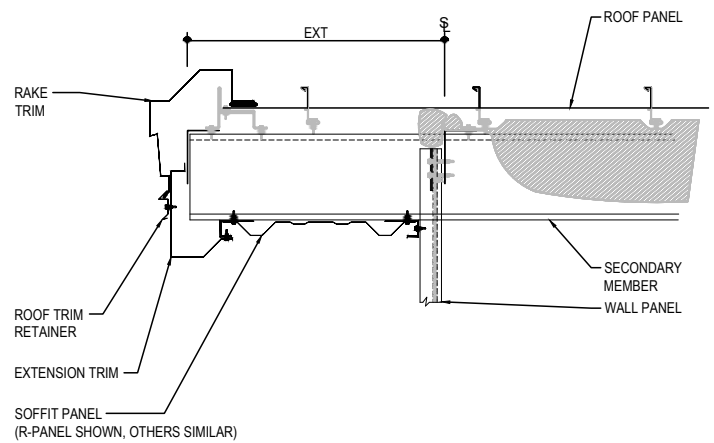
NOTE 1: KEEP FASTENERS 2 1/2" AWAY FROM RAKE CLIPS!!
REFERENCE DETAIL EA3076 FOR ADDITIONAL REQUIRED TRIM LAP FASTENER



END OF RAKE EXTENSION



RAKE EXTENSION SOFFIT AT BUILDING STEEL LINE



RAKE EXTENSION DETAIL

RAKE DETAIL w/ SOFFIT PANELS
SEE WALL SHEETING ERECTION NOTES FOR WALL PANEL FASTENER LOCATIONS

EO3311

Detailer Notes:

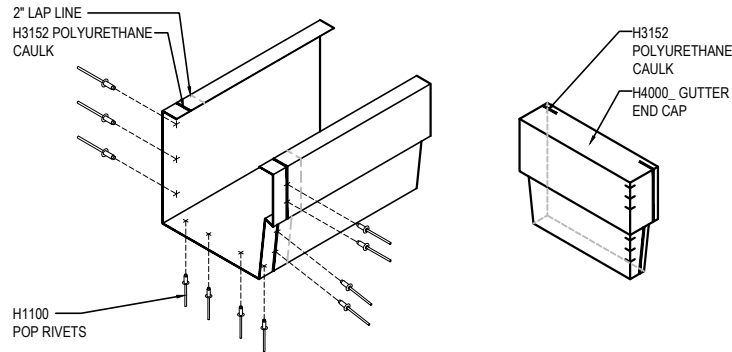
1) N/A

EO3312 - RAKE EXTENSION TERMINATION - LOW EAVE

[Download the DWG file by clicking here.](#)

GUTTER LAP & END CAP

APPLY BEAD OF POLYURETHANE CAULK 1" FROM END OF TRIM AND LAP SECTIONS 2" AND FASTEN AS SHOWN. TO TERMINATE THE GUTTER APPLY POLYURETHANE CAULK TO THREE SIDES OF END CAP AND TOP RETURN AREA AS SHOWN AND INSERT 1/2" INTO END OF GUTTER. ATTACH WITH RIVETS SAME AS END LAP.

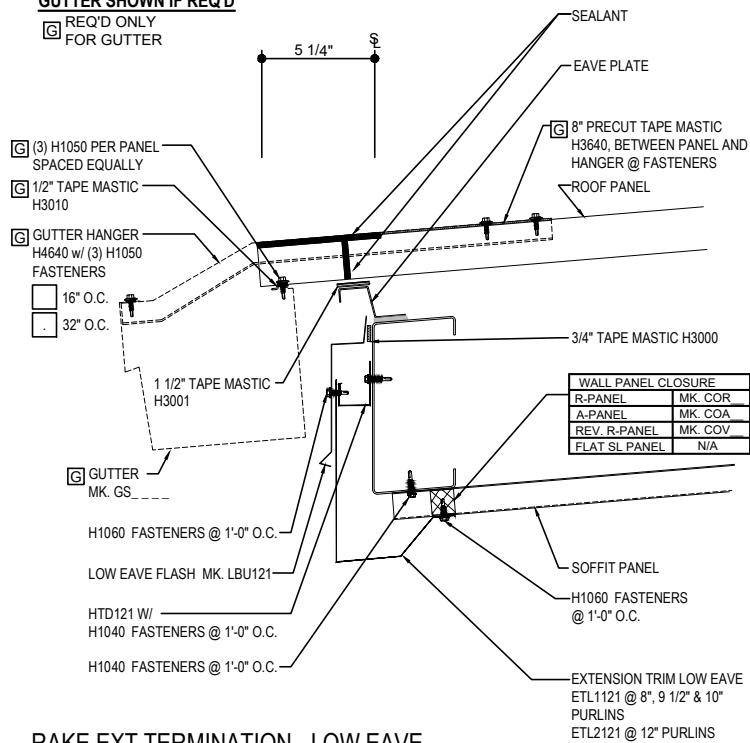


NOTE 1: PANEL RIB MUST BE SEAMED PRIOR TO INSTALLING GUTTER BRACKET!

NOTE: SEE ROOF PANEL BASIC INSTALLATION DETAIL EA3011 FOR FASTENER AND SEALANT REQUIREMENTS

GUTTER SHOWN IF REQ'D

REQ'D ONLY FOR GUTTER



RAKE EXT TERMINATION - LOW EAVE

EAVE WITH OR WITHOUT GUTTER CONTINUATION AT RAKE EXTENSION

EO3312

Detailer Notes:

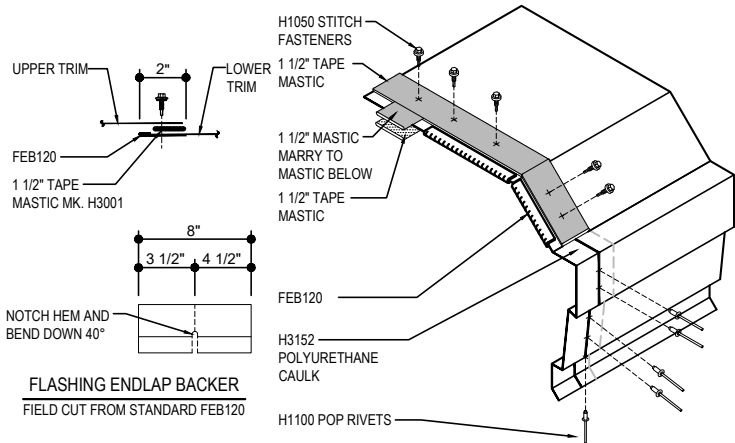
1) N/A

EO3314 - RAKE EXTENSION TERMINATION - HIGH EAVE

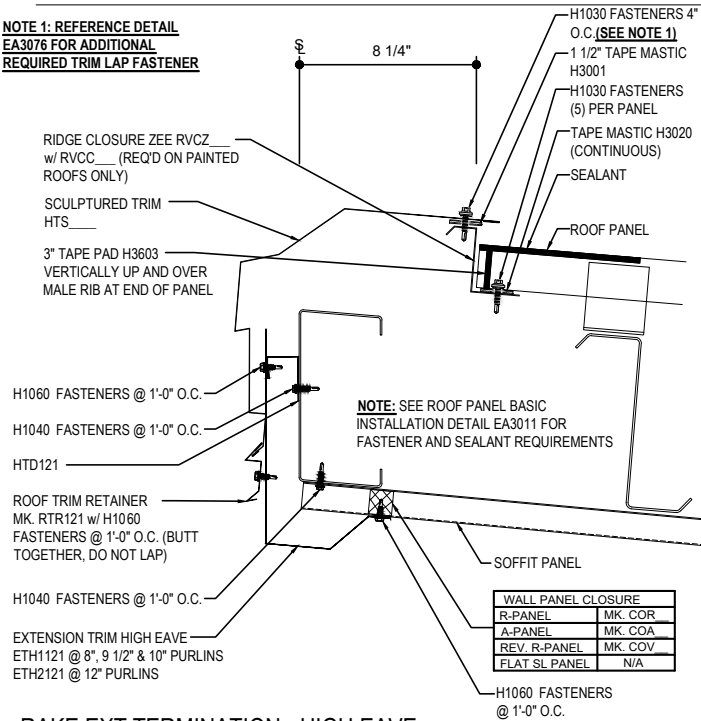
[Download the DWG file by clicking here.](#)

HIGH EAVE LAP & FLASHING BACKER

SLIDE FIELD CUT SECTION FLASHING ENDLAP BACKER ONTO THE LOWER TRIM PIECE. PLACE TAPE MASTIC NEXT TO HEM OF THE BACKER (NOT ON TOP OF HEM). APPLY CONTINUOUS BEAD OF CAULK 1" FROM END OF TRIM DOWN PROFILE OF TRIM. FASTEN LAP WITH STITCH FASTENERS AND POP RIVETS AS SHOWN.



NOTE 1: REFERENCE DETAIL
EA3076 FOR ADDITIONAL
REQUIRED TRIM LAP FASTENER



RAKE EXT TERMINATION - HIGH EAVE
HIGH EAVE CONTINUATION AT RAKE EXTENSION

EO3314

Detailer Notes:

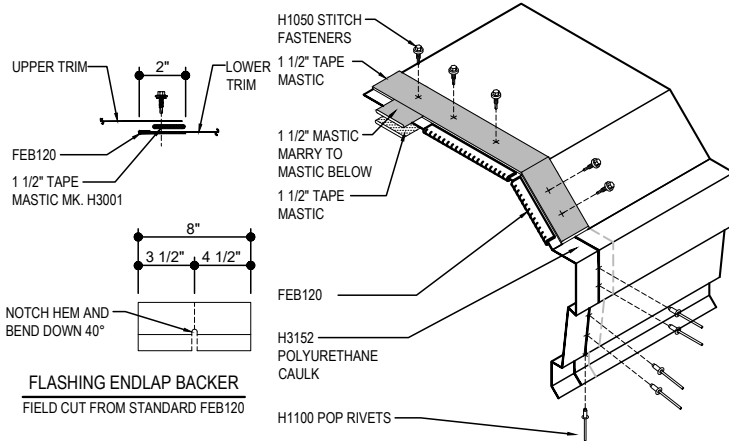
1) N/A

EO3410 - HIGH EAVE EXTENSION

[Download the DWG file by clicking here.](#)

HIGH EAVE LAP & FLASHING BACKER

SLIDE FIELD CUT SECTION FLASHING ENDLAP BACKER ONTO THE LOWER TRIM PIECE. PLACE TAPE MASTIC NEXT TO HEM OF THE BACKER (NOT ON TOP OF HEM). APPLY CONTINUOUS BEAD OF CAULK 1" FROM END OF TRIM DOWN PROFILE OF TRIM. FASTEN LAP WITH STITCH FASTENERS AND POP RIVETS AS SHOWN.



FLASHING ENDLAP BACKER

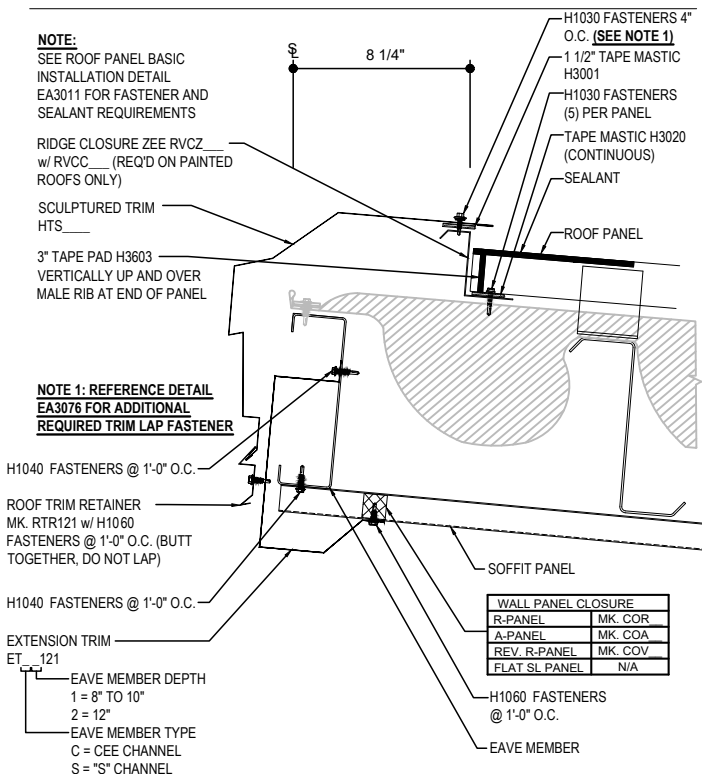
FIELD CUT FROM STANDARD FEB120

NOTE:
SEE ROOF PANEL BASIC
INSTALLATION DETAIL
EA3011 FOR FASTENER AND
SEALANT REQUIREMENTS

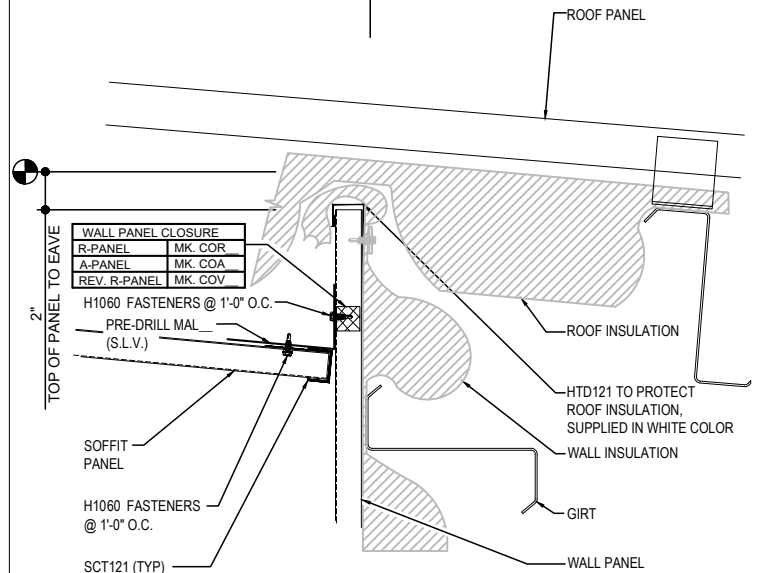
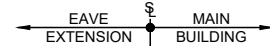
RIDGE CLOSURE ZEE RVCC
w/ RVCC (REQ'D ON PAINTED
ROOFS ONLY)

SCULPTURED TRIM
HTS
3" TAPE PAD H3003
VERTICALLY UP AND OVER
MALE RIB AT END OF PANEL

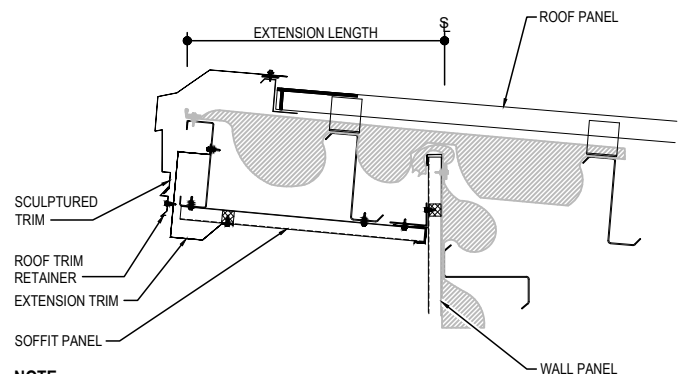
**NOTE 1: REFERENCE DETAIL
EA3076 FOR ADDITIONAL
REQUIRED TRIM LAP FASTENER**



WALL PANEL CLOSURE	
R-PANEL	MK. COR
A-PANEL	MK. COA
REV. R-PANEL	MK. COV
FLAT SL PANEL	N/A



EAVE EXTENSION SOFFIT AT BUILDING STEEL LINE



NOTE:
ROOF INSULATION NEEDS TO EXTEND OVER PURLINS TO PROVIDE
SUPPORT UNDER PANEL AT PURLIN LOCATIONS. WALL INSULATION
TERMINATION SHOWN IS A SUGGESTION BUT MAY VARY.

HIGH EAVE EXTENSION

HIGH EAVE DETAIL W/ SOFFIT PANELS
SEE WALL SHEETING ERECTION NOTES FOR WALL PANEL FASTENER LOCATIONS

EO3410

Detailer Notes:

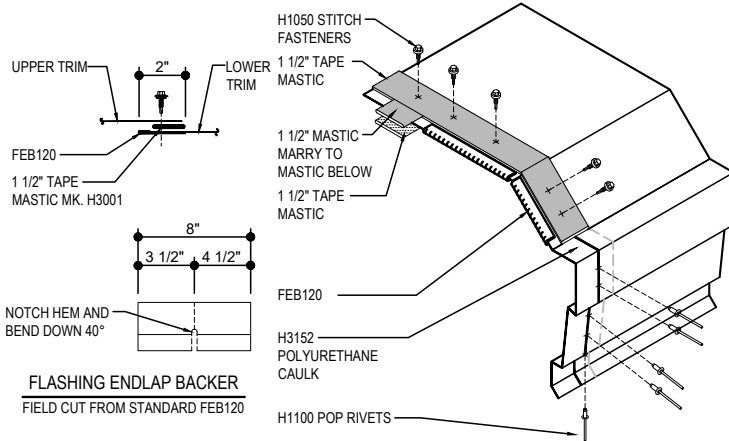
1) EXTENSIONS BETWEEN 1'-3" AND 1'-8" - PURLIN WILL INTERFERE WITH WALL PANEL AND DETAIL WILL HAVE TO BE MODIFIED TO ADJUST WALL PANEL SET DOWN TO KEEP PURLIN AT 1'-4" FROM STEEL LINE.

EO3411 - HIGH EAVE EXTENSION - IMP WALL

[Download the DWG file by clicking here.](#)

HIGH EAVE LAP & FLASHING BACKER

SLIDE FIELD CUT SECTION FLASHING ENDLAP BACKER ONTO THE LOWER TRIM PIECE. PLACE TAPE MASTIC NEXT TO HEM OF THE BACKER (NOT ON TOP OF HEM). APPLY CONTINUOUS BEAD OF CAULK 1" FROM END OF TRIM DOWN PROFILE OF TRIM. FASTEN LAP WITH STITCH FASTENERS AND POP RIVETS AS SHOWN.



FLASHING ENDLAP BACKER

FIELD CUT FROM STANDARD FEB120

NOTE:

SEE ROOF PANEL BASIC INSTALLATION DETAIL EA3011 FOR FASTENER AND SEALANT REQUIREMENTS

RIDGE CLOSURE ZEE RVCZ w/ RVCC (REQ'D ON PAINTED ROOFS ONLY)

SCULPTURED TRIM HTS

3" TAPE PAD H3603 VERTICALLY UP AND OVER MALE RIB AT END OF PANEL

NOTE 1: REFERENCE DETAIL EA3076 FOR ADDITIONAL REQUIRED TRIM LAP FASTENER

H1040 FASTENERS @ 1'-0" O.C.

ROOF TRIM RETAINER MK. RTR121 w/ H1060 FASTENERS @ 1'-0" O.C. (BUTT TOGETHER, DO NOT LAP)

H1040 FASTENERS @ 1'-0" O.C.

EXTENSION TRIM ET

EAVE MEMBER DEPTH 1 = 8" TO 10"

2 = 12"

EAVE MEMBER TYPE C = CEE CHANNEL

S = "S" CHANNEL

H1030 FASTENERS 4" O.C. (SEE NOTE 1)

1 1/2" TAPE MASTIC H3001

H1030 FASTENERS (5) PER PANEL

TAPE MASTIC H3020 (CONTINUOUS)

SEALANT

ROOF PANEL

SOFFIT PANEL

WALL PANEL CLOSURE

R-PANEL MK. COR

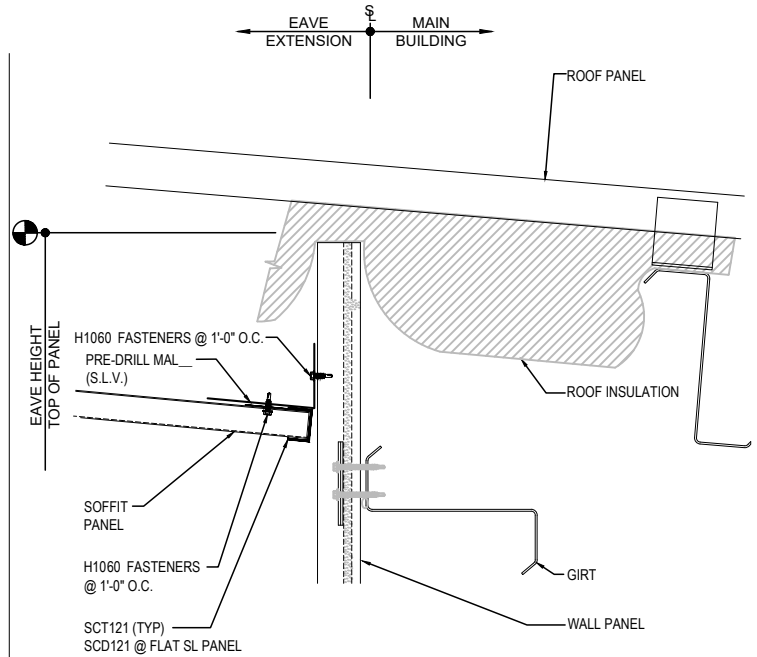
A-PANEL MK. COA

REV. R-PANEL MK. COV

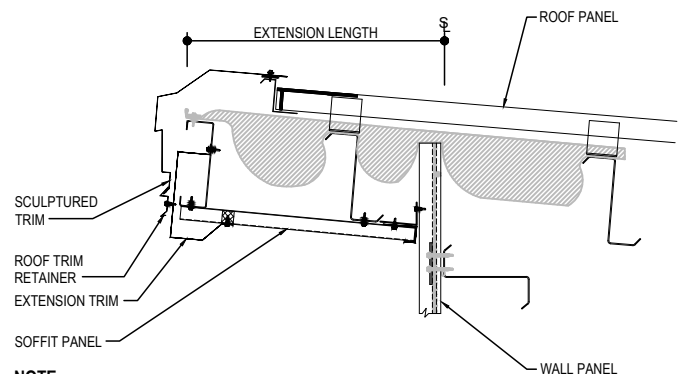
FLAT SL PANEL N/A

H1060 FASTENERS @ 1'-0" O.C.

EAVE MEMBER



EAVE EXTENSION SOFFIT AT BUILDING STEEL LINE



NOTE:

ROOF INSULATION NEEDS TO EXTEND OVER PURLINS TO PROVIDE SUPPORT UNDER PANEL AT PURLIN LOCATIONS. WALL INSULATION TERMINATION SHOWN IS A SUGGESTION BUT MAY VARY.

HIGH EAVE EXTENSION - IMP WALL

HIGH EAVE DETAIL w/ SOFFIT PANELS

SEE WALL SHEETING ERECTION NOTES FOR WALL PANEL FASTENER LOCATIONS

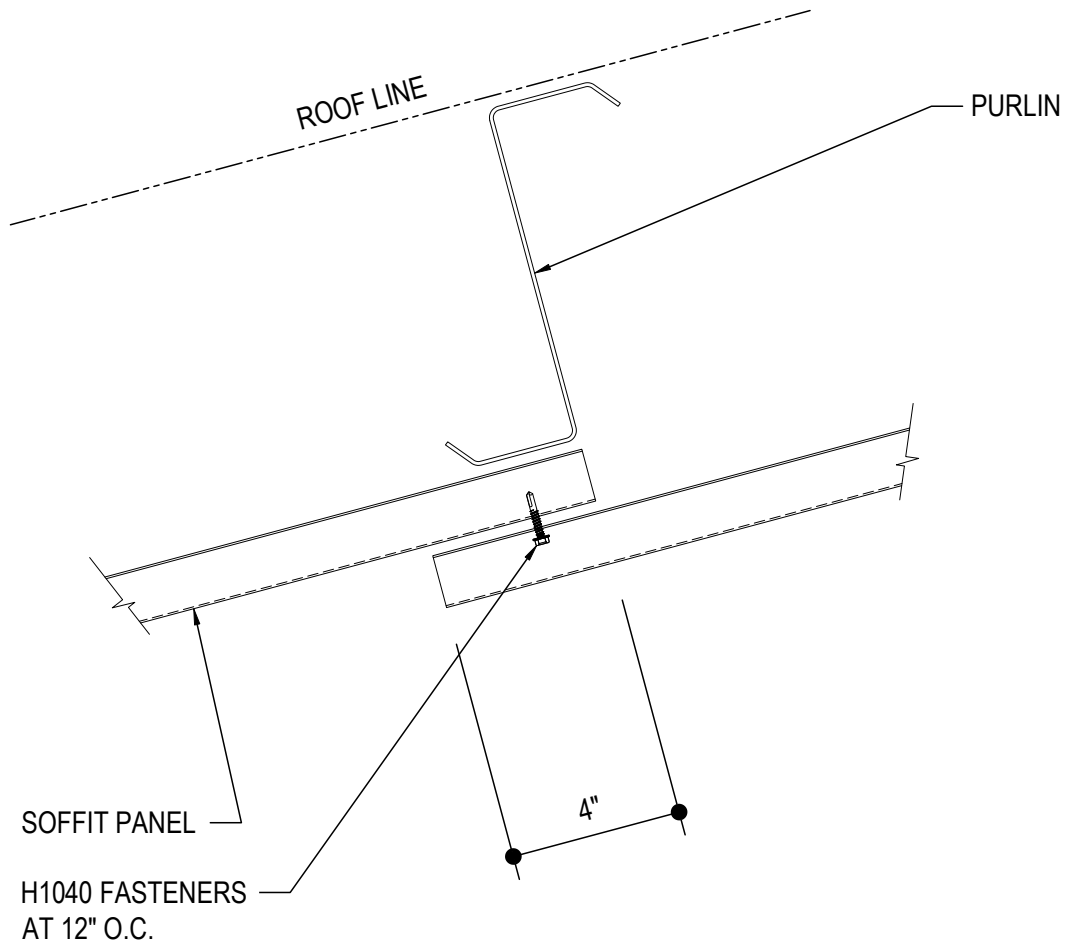
EO3411

Detailer Notes:

1) EXTENSIONS BETWEEN 1'-3" AND 1'-8" - PURLIN WILL INTERFERE WITH WALL PANEL AND DETAIL WILL HAVE TO BE MODIFIED TO ADJUST WALL PANEL SET DOWN TO KEEP PURLIN AT 1'-4" FROM STEEL LINE.

EO3610 - SOFFIT PANEL ENDLAP

[Download the DWG file by clicking here.](#)



SOFFIT PANEL ENDLAP

EO3610

Detailer Notes:

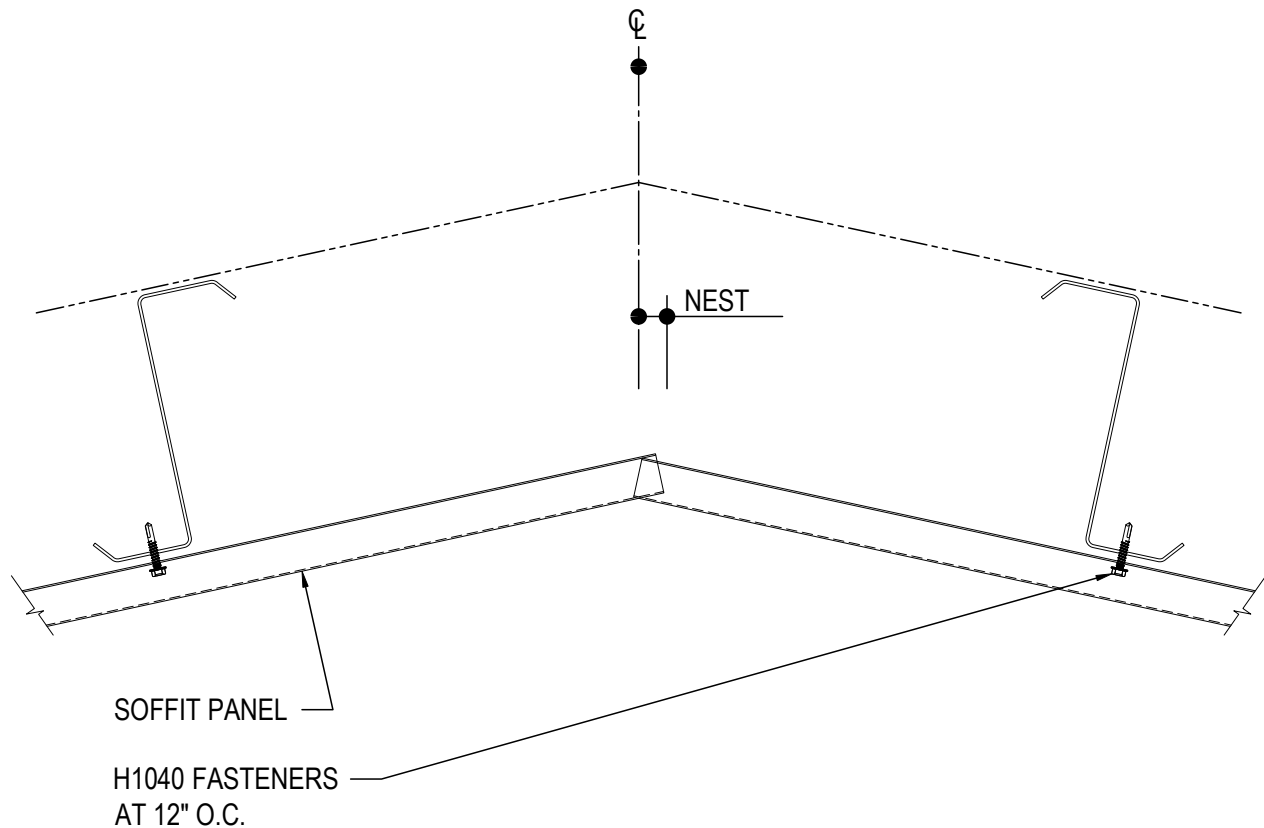
1) N/A

EO3615 - SOFFIT PANEL - RIDGE $\leq 1:12$

[Download the DWG file by clicking here.](#)

ERECTOR NOTE:

EXTEND THE PANEL PAST THE CENTERLINE OF THE RIDGE ON ONE SIDE OF THE RIDGE AS SHOWN. NEST THE OTHER PANEL INTO THE PROFILE.



SOFFIT PANEL RIDGE DETAIL

SOFFIT PANEL - SLOPES $\leq 1:12$
ALL STANDARD SOFFIT PANEL TYPES

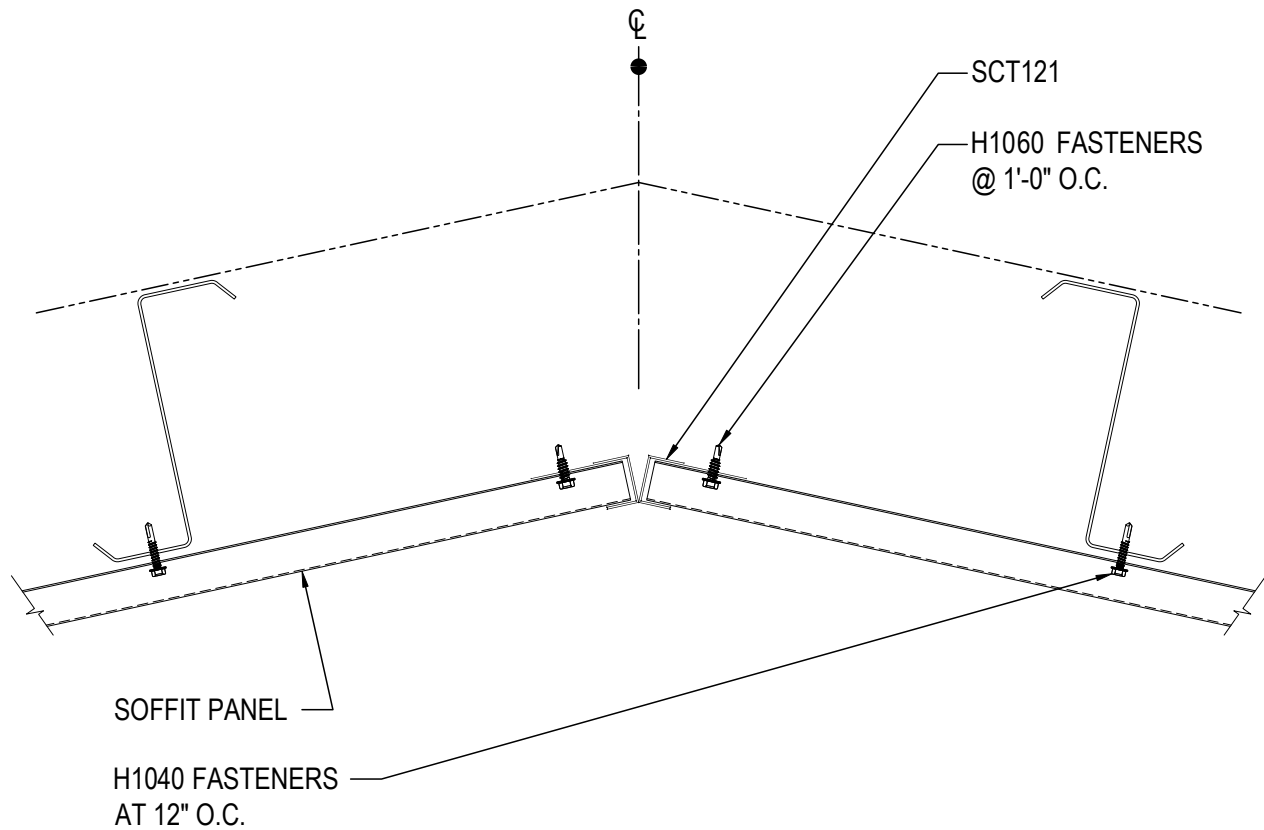
EO3615

Detailer Notes:

1) N/A

EO3616 - SOFFIT PANEL - RIDGE > 1:12

[Download the DWG file by clicking here.](#)



SOFFIT PANEL RIDGE DETAIL

SOFFIT PANEL - SLOPES >1:12
ALL STANDARD SOFFIT PANEL TYPES

EO3616

Detailer Notes:

1) N/A