

**CANOPY SHEETING**

EQ3005 - SOFFIT PANEL ERECTION DETAIL  
EQ3007 - FLAT SL PANEL ATTACHMENT DETAIL  
EQ3010 - LOW EAVE CANOPY - AT EAVE  
EQ3011 - LOW EAVE CANOPY - AT EAVE - IMP WALL  
EQ3110 - BELOW EAVE CANOPY  
EQ3111 - BELOW EAVE CANOPY - IMP WALL  
EQ3214 - CANOPY TERMINATION - INSET-FLUSH  
EQ3215 - CANOPY TERMINATION - BYPASS  
EQ3410 - HIGH EAVE CANOPY - AT EAVE  
EQ3411 - HIGH EAVE CANOPY - AT EAVE - IMP WALL  
EQ3510 - CANOPY SOFFIT TERM AT BEAM

---

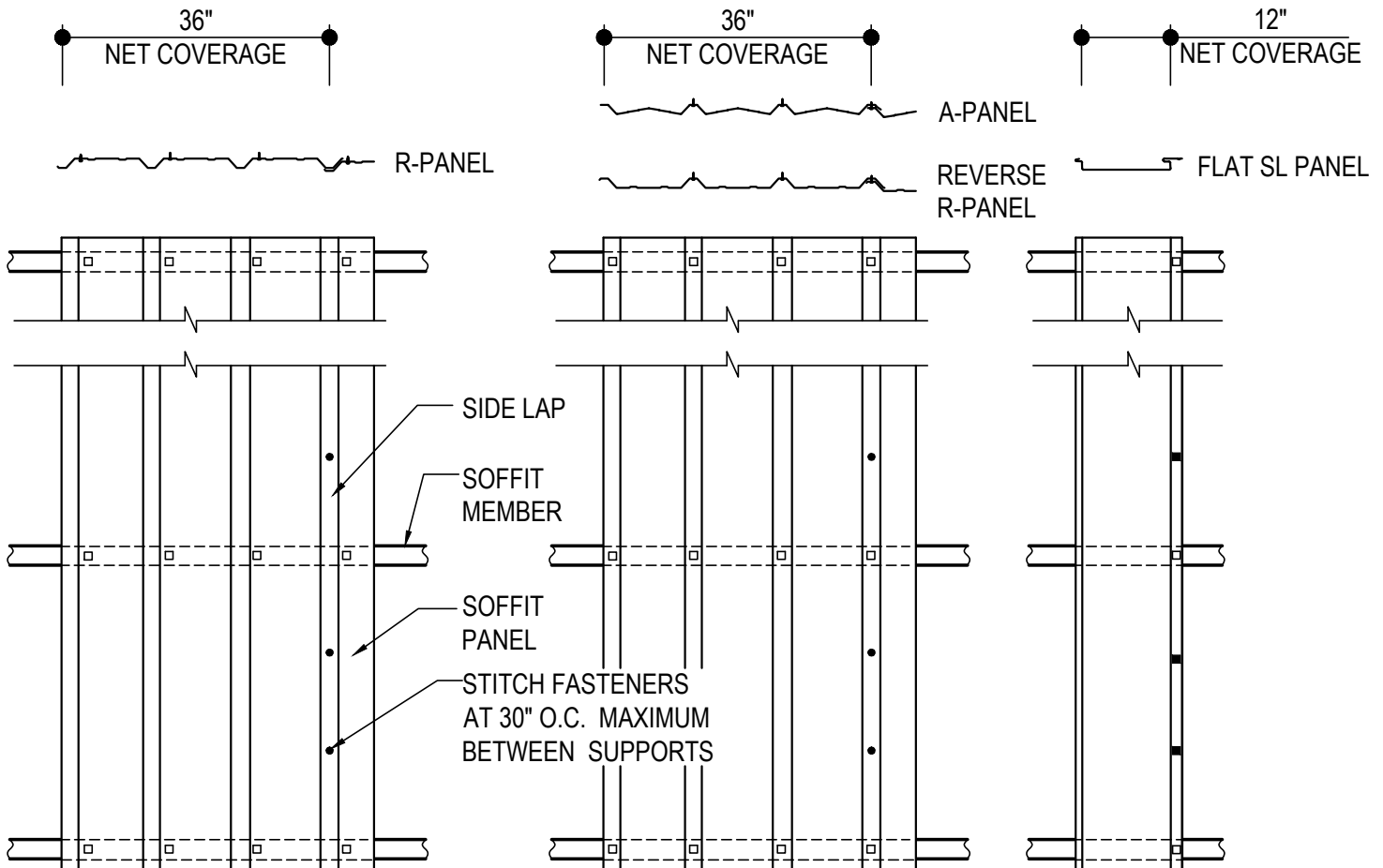
EQ3005 - SOFFIT PANEL ERECTION DETAIL

[Download the DWG file by clicking here.](#)

- H1060 STITCH FASTENER
- ▣ H1040 STRUCTURAL FASTENER
- NEGATIVE LOAD CLIP (MK. NLC-1)  
(SEE FLAT SL PANEL ATTACHMENT DETAIL)

**ERECTOR NOTE:**

ERECTION OF THE SOFFIT PANEL MUST BE COORDINATED PROPERLY WITH THE SOFFIT TRIM CONDITIONS AS SHOWN IN THE ERECTION DETAILS. PLACEMENT AND ORIENTATION OF THE SOFFIT PANEL MAY VARY BY CONDITION AND SUPPORT MEMBERS MAY ALSO VARY. USE THIS FASTENING PATTERN UNLESS TRIM SECTION SHOWS A SPECIFIC PATTERN.



**SOFFIT PANEL ERECTION DETAIL**

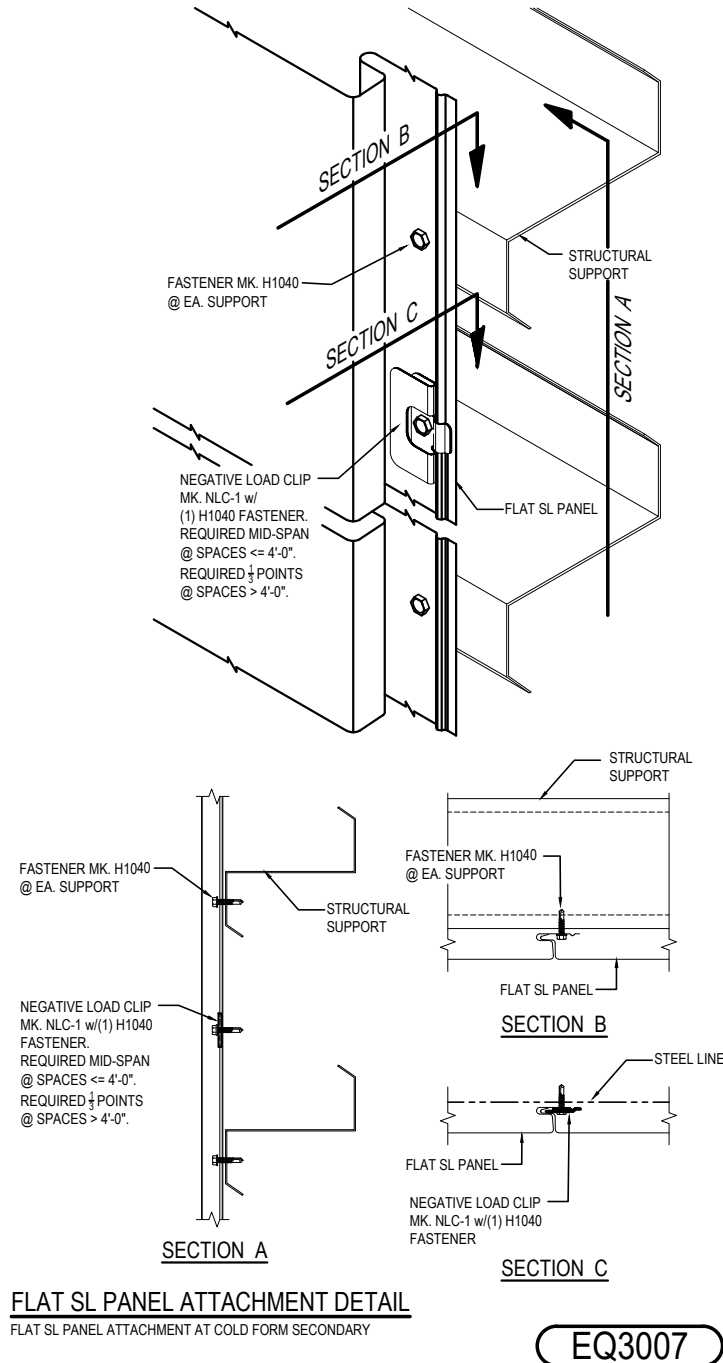
**EQ3005**

Detailer Notes:

- 1) THIS DETAIL IS A DUPLICATE OF DO0005, DQ0005, EO3005, EO6005, EQ6005, HK0005, & IK0005. DUPLICATE DETAILS ARE TO ENSURE THAT THEY ARE PLACED IN ORDER IN THE ERECTION DRAWINGS.

### EQ3007 - FLAT SL PANEL ATTACHMENT DETAIL

[Download the DWG file by clicking here.](#)



#### Detailer Notes:

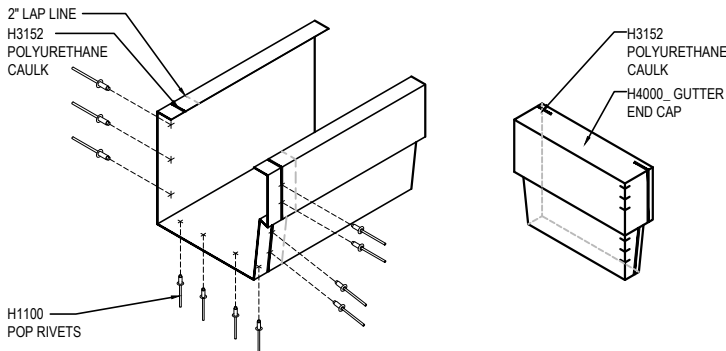
- 1) THIS DETAIL IS A DUPLICATE OF DO0007, DQ0007, EO3007, EO6007, EQ6007, HK0007, & IK0007. DUPLICATE DETAILS ARE TO ENSURE THAT THEY ARE PLACED IN ORDER IN THE ERECTION DRAWINGS.

### EQ3010 - LOW EAVE CANOPY - AT EAVE

[Download the DWG file by clicking here.](#)

#### GUTTER LAP & END CAP

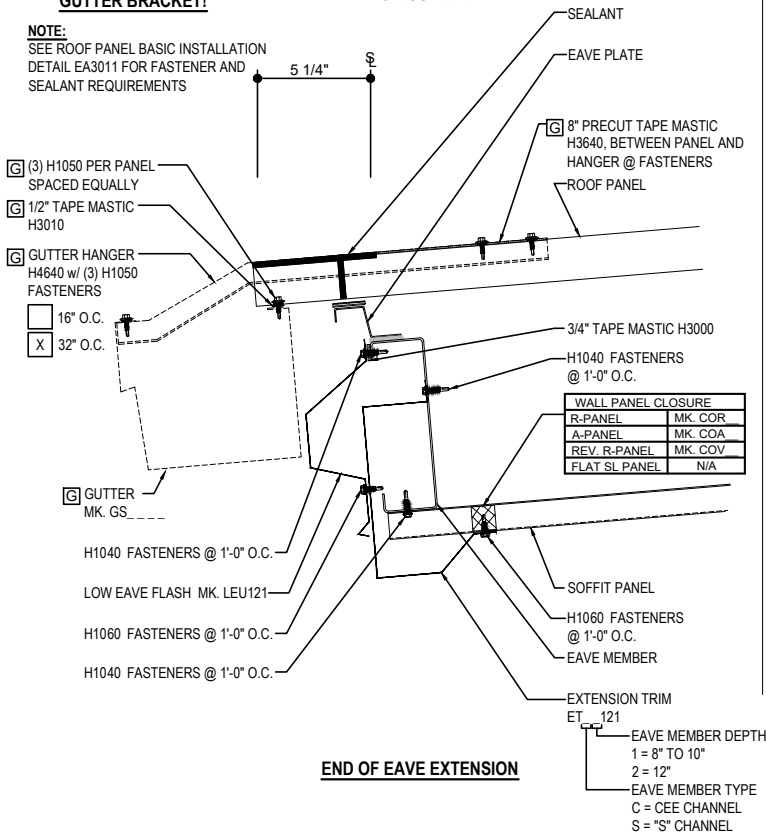
APPLY BEAD OF POLYURETHANE CAULK 1" FROM END OF TRIM AND LAP SECTIONS 2" AND FASTEN AS SHOWN. TO TERMINATE THE GUTTER APPLY POLYURETHANE CAULK TO THREE SIDES OF END CAP AND TOP RETURN AREA AS SHOWN AND INSERT 1/2" INTO END OF GUTTER. ATTACH WITH RIVETS SAME AS END LAP.



**NOTE 1: PANEL RIB MUST BE SEAMED PRIOR TO INSTALLING GUTTER BRACKET!**

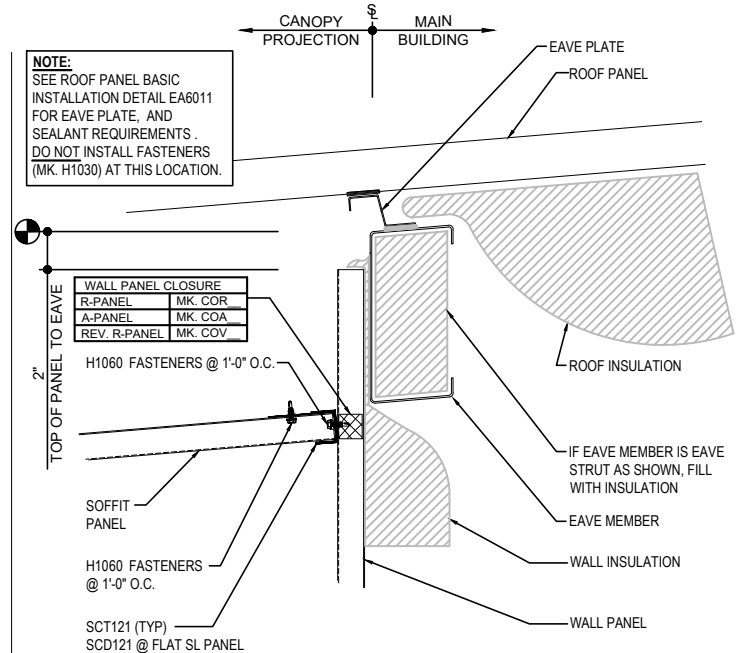
**GUTTER SHOWN IF REQ'D**  
REQ'D ONLY FOR GUTTER

**NOTE:**  
SEE ROOF PANEL BASIC INSTALLATION DETAIL EA3011 FOR FASTENER AND SEALANT REQUIREMENTS

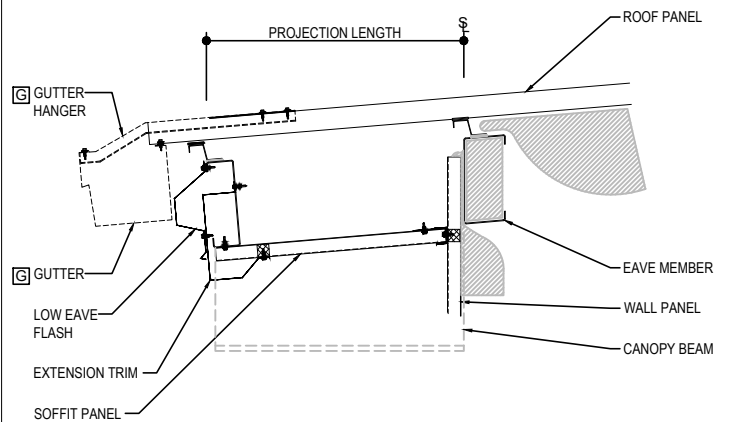


**END OF EAVE EXTENSION**

**NOTE:**  
SEE ROOF PANEL BASIC INSTALLATION DETAIL EA6011 FOR EAVE PLATE, AND SEALANT REQUIREMENTS. DO NOT INSTALL FASTENERS (MK. H1030) AT THIS LOCATION.



**EAVE EXTENSION SOFFIT AT BUILDING STEEL LINE**



#### LOW EAVE CANOPY - AT EAVE

EAVE WITH OR WITHOUT GUTTER DETAIL w/ SOFFIT PANELS  
SEE WALL SHEETING ERECTION NOTES FOR WALL PANEL FASTENER LOCATIONS

**EQ3010**

#### Detailer Notes:

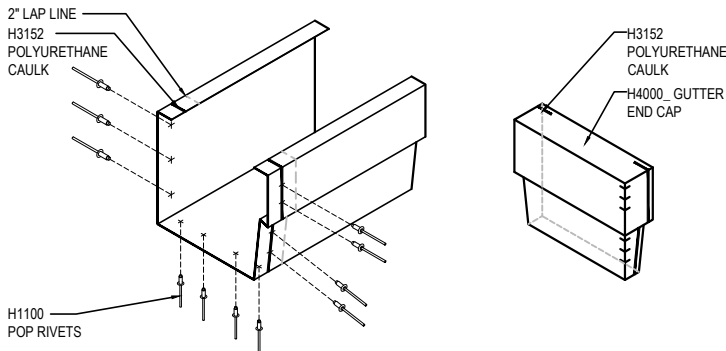
1) N/A

### EQ3011 - LOW EAVE CANOPY - AT EAVE - IMP WALL

[Download the DWG file by clicking here.](#)

#### GUTTER LAP & END CAP

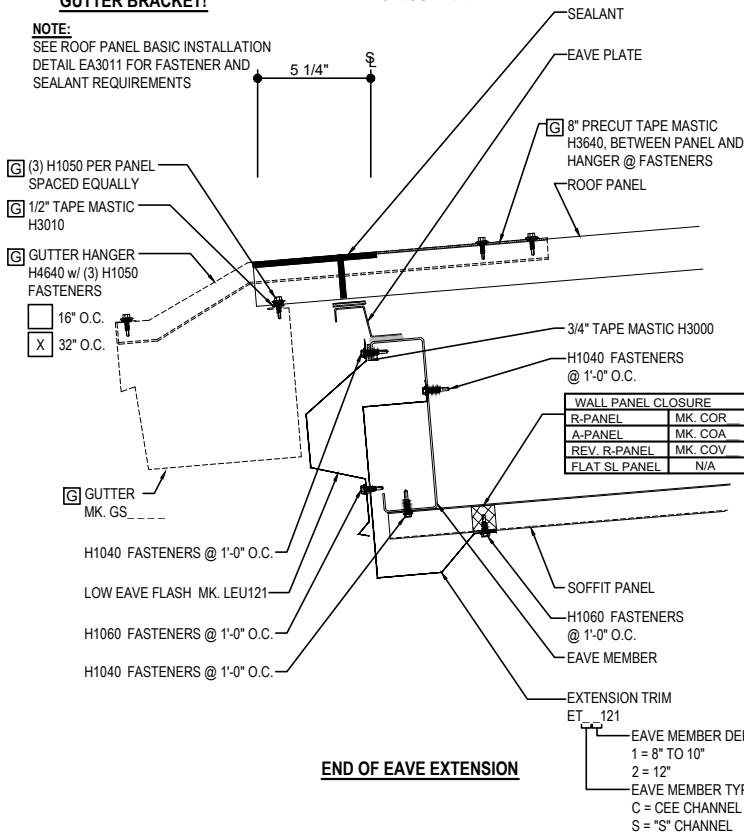
APPLY BEAD OF POLYURETHANE CAULK 1" FROM END OF TRIM AND LAP SECTIONS 2" AND FASTEN AS SHOWN. TO TERMINATE THE GUTTER APPLY POLYURETHANE CAULK TO THREE SIDES OF END CAP AND TOP RETURN AREA AS SHOWN AND INSERT 1/2" INTO END OF GUTTER. ATTACH WITH RIVETS SAME AS END LAP.



**NOTE 1: PANEL RIB MUST BE SEAMED PRIOR TO INSTALLING GUTTER BRACKET!**

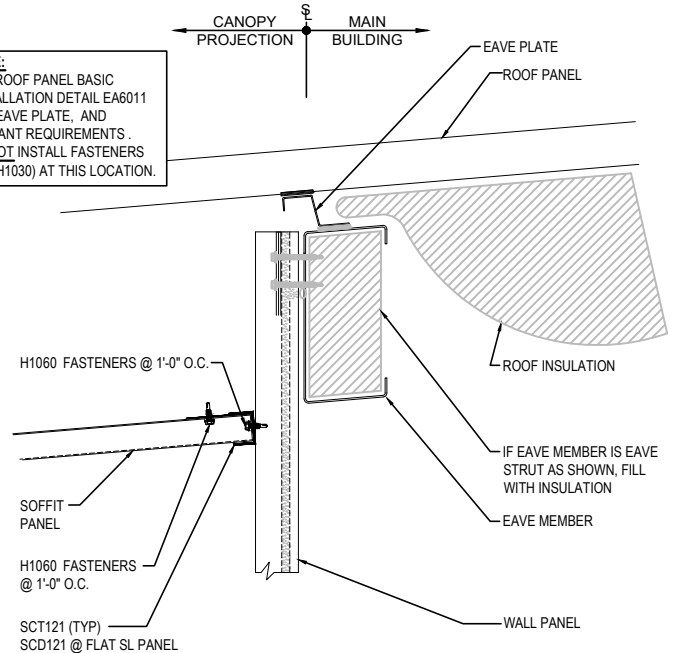
**GUTTER SHOWN IF REQ'D**  
[G] REQ'D ONLY FOR GUTTER

**NOTE:**  
SEE ROOF PANEL BASIC INSTALLATION DETAIL EA3011 FOR FASTENER AND SEALANT REQUIREMENTS

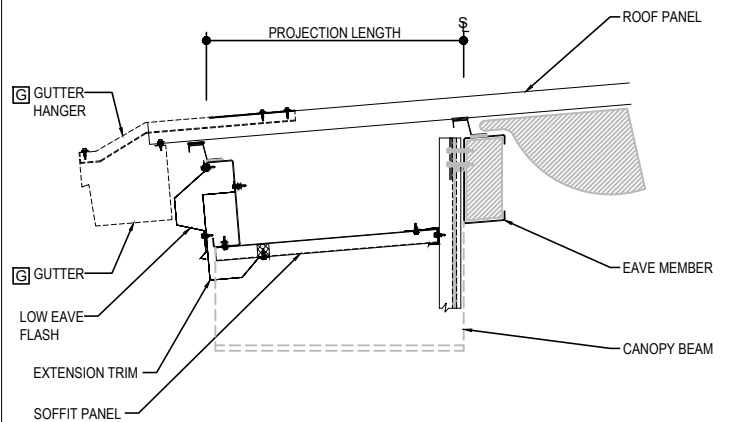


**END OF EAVE EXTENSION**

**NOTE:**  
SEE ROOF PANEL BASIC INSTALLATION DETAIL EA6011 FOR EAVE PLATE, AND SEALANT REQUIREMENTS. DO NOT INSTALL FASTENERS (MK. H1030) AT THIS LOCATION.



**EAVE EXTENSION SOFFIT AT BUILDING STEEL LINE**



#### LOW EAVE CANOPY - AT EAVE - IMP WALLS

EAVE WITH OR WITHOUT GUTTER DETAIL W/ SOFFIT PANELS  
SEE WALL SHEETING ERECTION NOTES FOR WALL PANEL FASTENER LOCATIONS

**EQ3011**

#### Detailer Notes:

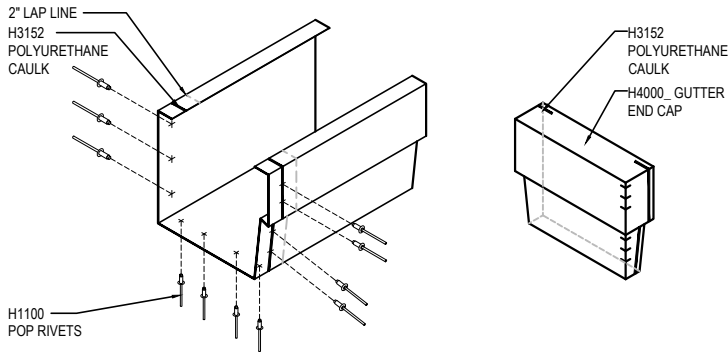
1) N/A

### EQ3110 - BELOW EAVE CANOPY

[Download the DWG file by clicking here.](#)

#### GUTTER LAP & END CAP

APPLY BEAD OF POLYURETHANE CAULK 1" FROM END OF TRIM AND LAP SECTIONS 2" AND FASTEN AS SHOWN. TO TERMINATE THE GUTTER APPLY POLYURETHANE CAULK TO THREE SIDES OF END CAP AND TOP RETURN AREA AS SHOWN AND INSERT 1/2" INTO END OF GUTTER. ATTACH WITH RIVETS SAME AS END LAP.

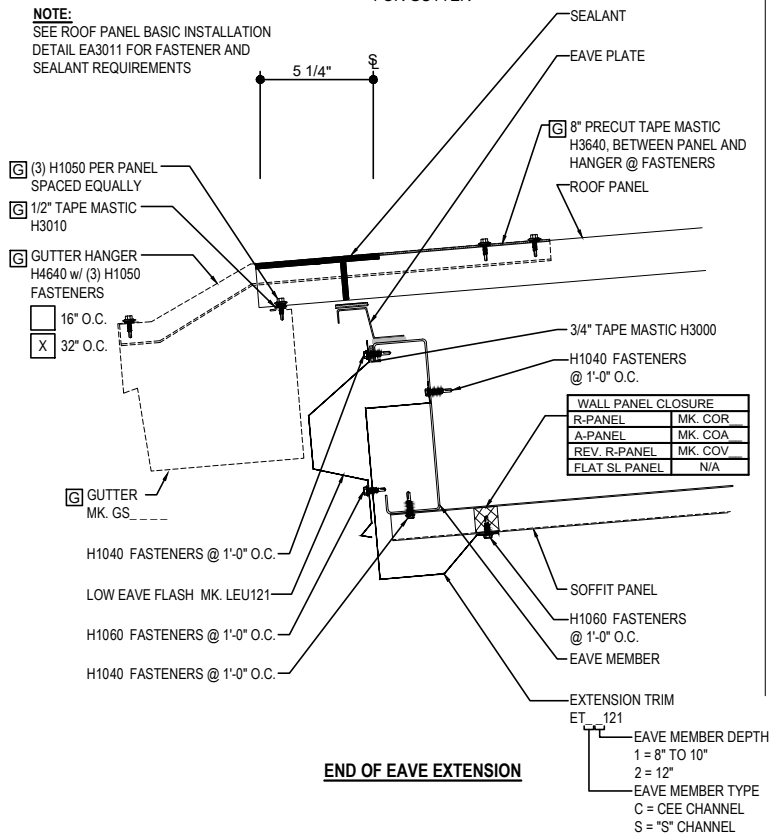


**NOTE 1: PANEL RIB MUST BE SEAMED PRIOR TO INSTALLING GUTTER BRACKET!**

#### GUTTER SHOWN IF REQ'D

REQ'D ONLY FOR GUTTER

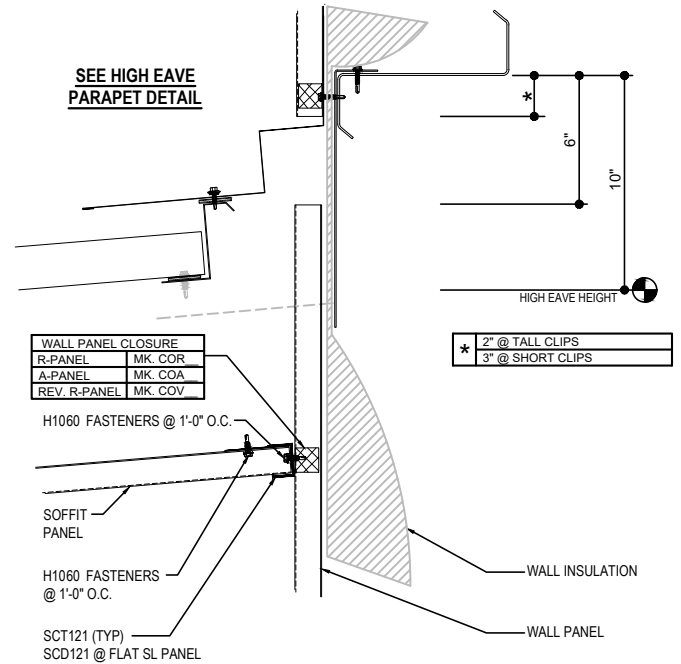
**NOTE:**  
SEE ROOF PANEL BASIC INSTALLATION DETAIL EA3011 FOR FASTENER AND SEALANT REQUIREMENTS



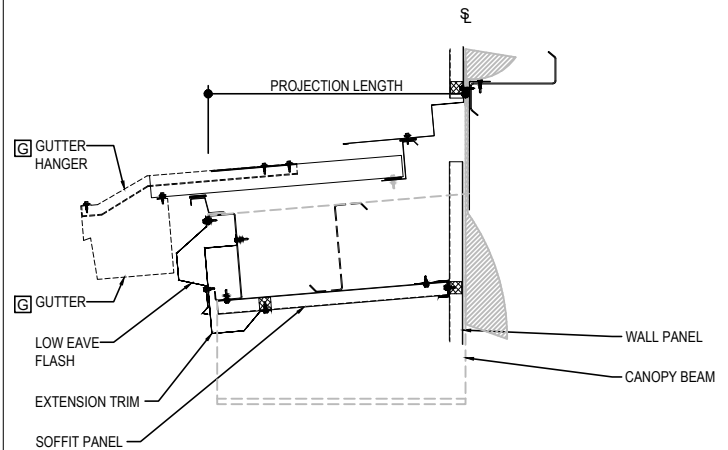
**END OF EAVE EXTENSION**

EAVE MEMBER DEPTH  
1 = 8" TO 10"  
2 = 12"  
EAVE MEMBER TYPE  
C = CEE CHANNEL  
S = "S" CHANNEL

#### SEE HIGH EAVE PARAPET DETAIL



#### EAVE EXTENSION SOFFIT AT BUILDING STEEL LINE



#### BELOW EAVE CANOPY

EAVE WITH OR WITHOUT GUTTER DETAIL w/ SOFFIT PANELS  
SEE WALL SHEETING ERECTION NOTES FOR WALL PANEL FASTENER LOCATIONS

**EQ3110**

#### Detailer Notes:

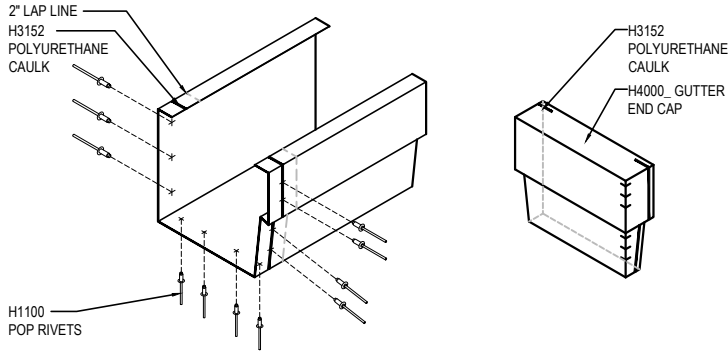
1) N/A

### EQ3111 - BELOW EAVE CANOPY - IMP WALL

[Download the DWG file by clicking here.](#)

#### GUTTER LAP & END CAP

APPLY BEAD OF POLYURETHANE CAULK 1" FROM END OF TRIM AND LAP SECTIONS 2" AND FASTEN AS SHOWN. TO TERMINATE THE GUTTER APPLY POLYURETHANE CAULK TO THREE SIDES OF END CAP AND TOP RETURN AREA AS SHOWN AND INSERT 1/2" INTO END OF GUTTER. ATTACH WITH RIVETS SAME AS END LAP.

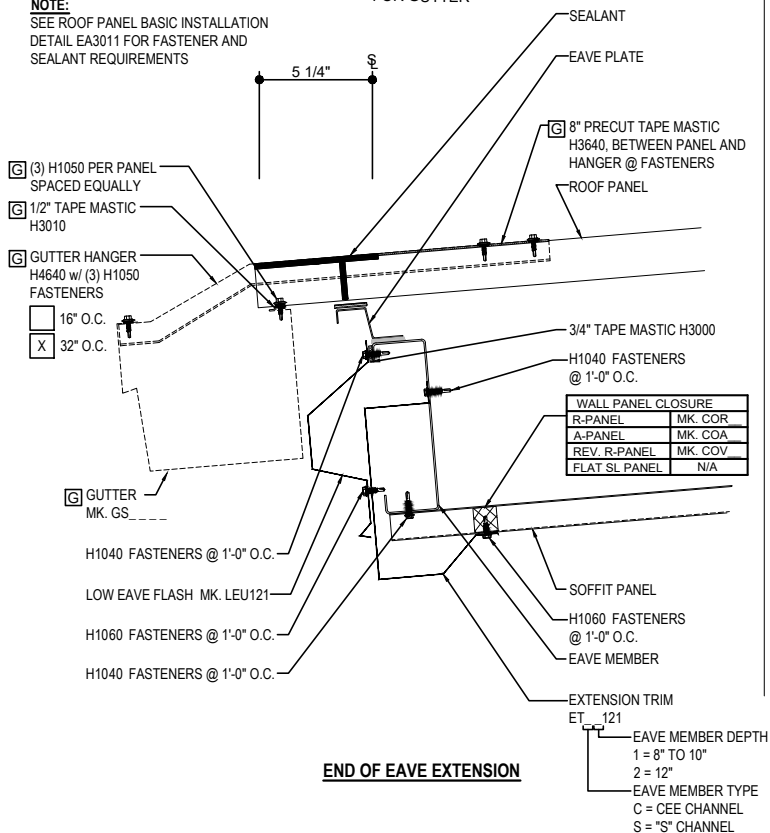


**NOTE 1: PANEL RIB MUST BE SEAMED PRIOR TO INSTALLING GUTTER BRACKET!**

#### GUTTER SHOWN IF REQ'D

REQ'D ONLY FOR GUTTER

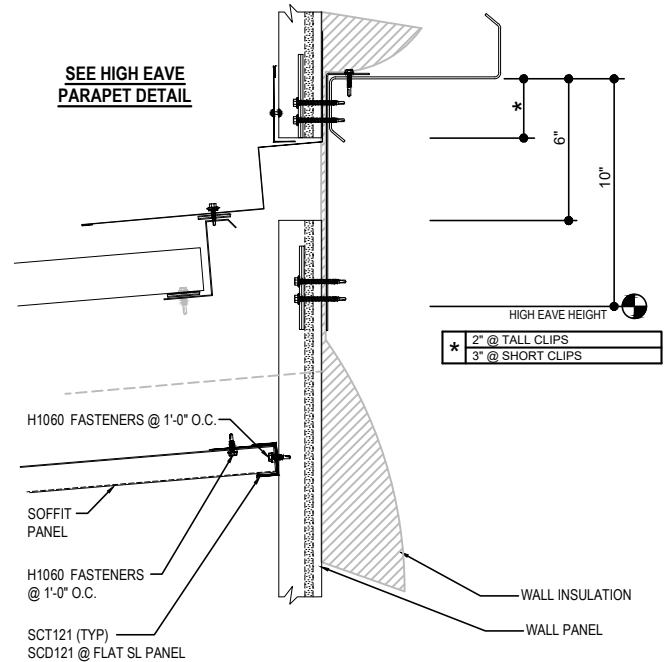
**NOTE:**  
SEE ROOF PANEL BASIC INSTALLATION  
DETAIL EA3011 FOR FASTENER AND  
SEALANT REQUIREMENTS



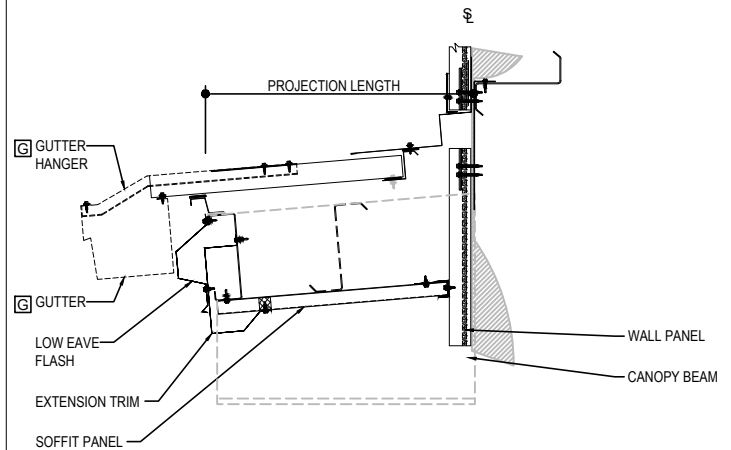
#### END OF EAVE EXTENSION

EAVE MEMBER DEPTH  
1 = 8" TO 10"  
2 = 12"  
EAVE MEMBER TYPE  
C = CEE CHANNEL  
S = "S" CHANNEL

#### SEE HIGH EAVE PARAPET DETAIL



#### EAVE EXTENSION SOFFIT AT BUILDING STEEL LINE



#### BELOW EAVE CANOPY - IMP WALL

EAVE WITH OR WITHOUT GUTTER DETAIL w/ SOFFIT PANELS  
SEE WALL SHEETING ERECTION NOTES FOR WALL PANEL FASTENER LOCATIONS

**EQ3111**

#### Detailer Notes:

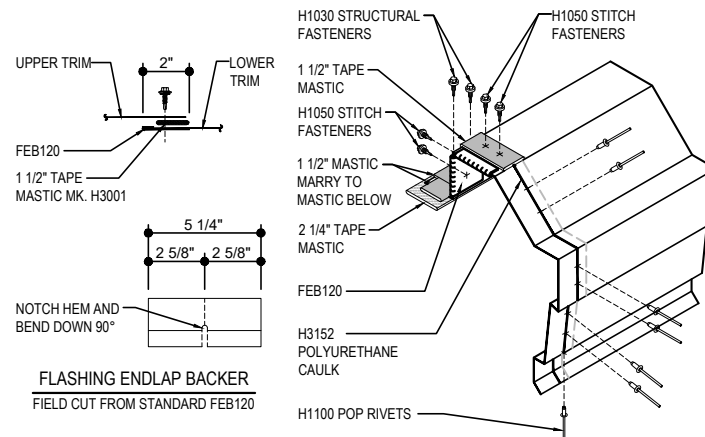
1) N/A

### EQ3214 - CANOPY TERMINATION - INSET-FLUSH

[Download the DWG file by clicking here.](#)

#### RAKE LAP & FLASHING BACKER

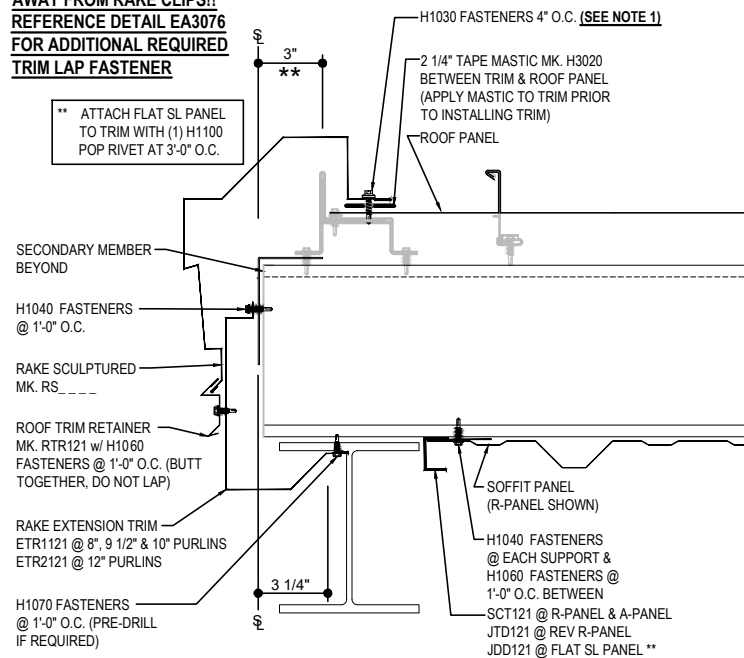
SLIDE FIELD CUT SECTION OF FLASHING ENDLAP BACKER ONTO THE LOWER TRIM PIECE AS SHOWN BELOW. PLACE TAPE MASTIC NEXT TO HEM OF THE BACKER (NOT ON TOP OF HEM). APPLY CONTINUOUS BEAD OF CAULK 1" FROM END OF TRIM DOWN PROFILE OF TRIM. FASTEN LAP WITH STITCH FASTENERS AND POP RIVETS AS SHOWN. ROOF STRUCTURAL FASTENERS SHOULD BE USED TO FASTEN THROUGH PANEL FLAT INTO RAKE ANGLE.



#### NOTE 1: KEEP FASTENERS 2 1/2"

**AWAY FROM RAKE CLIPS!!**  
**REFERENCE DETAIL EA3076**  
**FOR ADDITIONAL REQUIRED**  
**TRIM LAP FASTENER**

\*\* ATTACH FLAT SL PANEL TO TRIM WITH (1) H1100 POP RIVET AT 3'-0" O.C.



#### CANOPY TERMINATION - INSET / FLUSH

RAKE AT CANOPY TERMINATION

**EQ3214**

#### Detailer Notes:

- 1) USE THIS DETAIL WITH FLUSH OR INSET ENDWALL CONDITIONS.

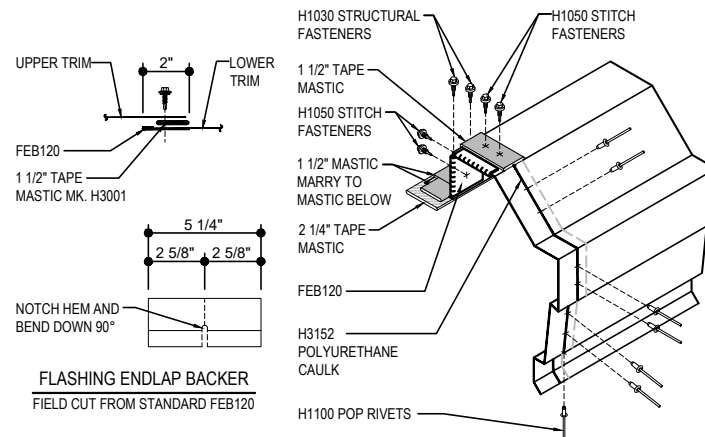


### EQ3215 - CANOPY TERMINATION - BYPASS

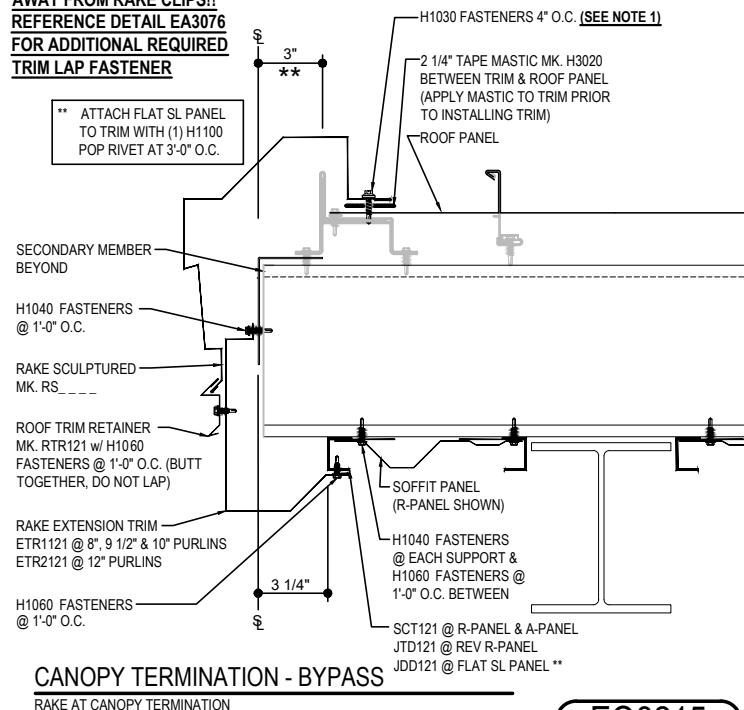
[Download the DWG file by clicking here.](#)

#### RAKE LAP & FLASHING BACKER

SLIDE FIELD CUT SECTION OF FLASHING ENDLAP BACKER ONTO THE LOWER TRIM PIECE AS SHOWN BELOW. PLACE TAPE MASTIC NEXT TO HEM OF THE BACKER (NOT ON TOP OF HEM). APPLY CONTINUOUS BEAD OF CAULK 1" FROM END OF TRIM DOWN PROFILE OF TRIM. FASTEN LAP WITH STITCH FASTENERS AND POP RIVETS AS SHOWN. ROOF STRUCTURAL FASTENERS SHOULD BE USED TO FASTEN THROUGH PANEL FLAT INTO RAKE ANGLE.



**NOTE 1: KEEP FASTENERS 2 1/2\"**  
**AWAY FROM RAKE CLIPS!!**  
**REFERENCE DETAIL EA3076**  
**FOR ADDITIONAL REQUIRED**  
**TRIM LAP FASTENER**



#### CANOPY TERMINATION - BYPASS

RAKE AT CANOPY TERMINATION

**EQ3215**

#### Detailer Notes:

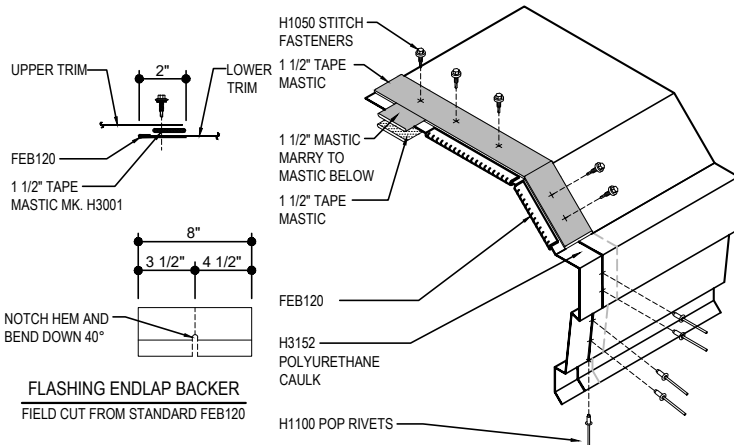
- 1) USE THIS DETAIL WITH BYPASS ENDWALL CONDITIONS.

### EQ3410 - HIGH EAVE CANOPY - AT EAVE

[Download the DWG file by clicking here.](#)

#### HIGH EAVE LAP & FLASHING BACKER

SLIDE FIELD CUT SECTION FLASHING ENDLAP BACKER ONTO THE LOWER TRIM PIECE. PLACE TAPE MASTIC NEXT TO HEM OF THE BACKER (NOT ON TOP OF HEM). APPLY CONTINUOUS BEAD OF CAULK 1" FROM END OF TRIM DOWN PROFILE OF TRIM. FASTEN LAP WITH STITCH FASTENERS AND POP RIVETS AS SHOWN.



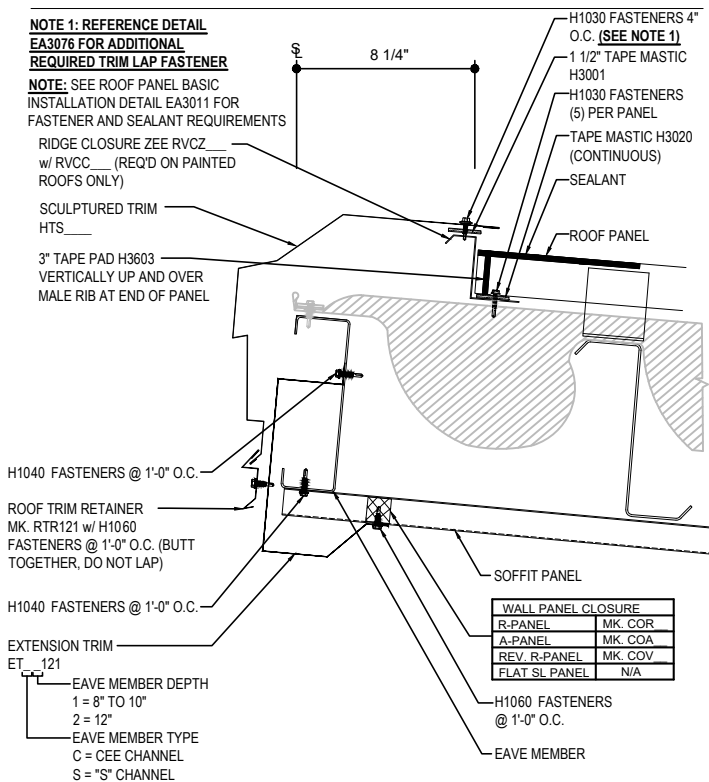
#### NOTE 1: REFERENCE DETAIL EA3076 FOR ADDITIONAL REQUIRED TRIM LAP FASTENER

NOTE: SEE ROOF PANEL BASIC INSTALLATION DETAIL EA3011 FOR FASTENER AND SEALANT REQUIREMENTS

RIDGE CLOSURE ZEE RVC2 w/ RVCC (REQ'D ON PAINTED ROOFS ONLY)

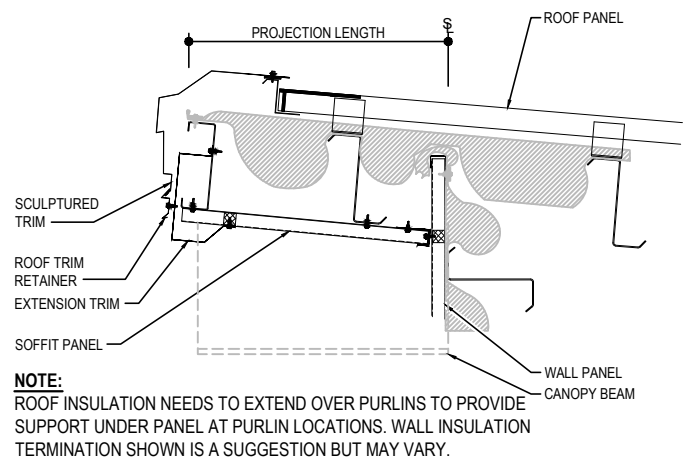
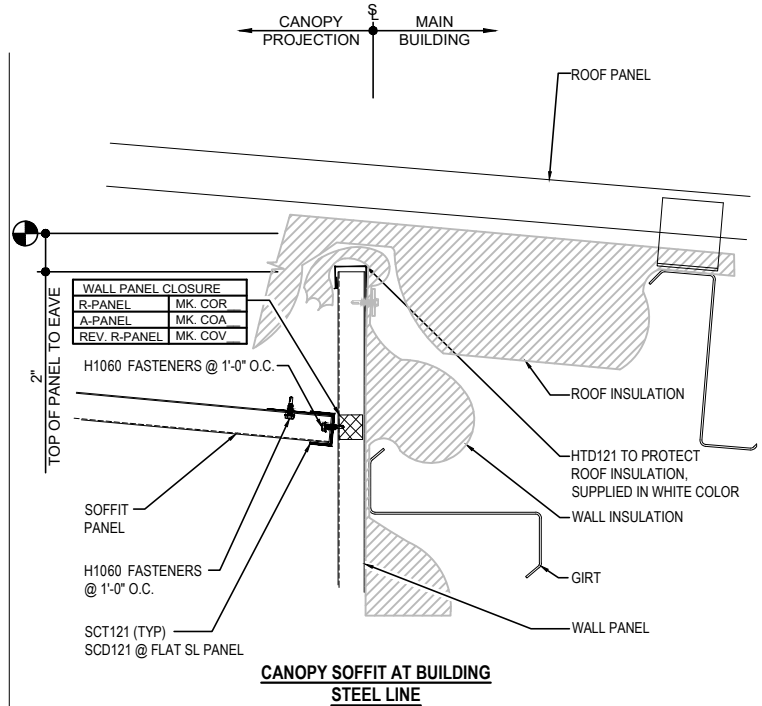
SCULPTURED TRIM HTS

3" TAPE PAD H3603 VERTICALLY UP AND OVER MALE RIB AT END OF PANEL



#### Detailer Notes:

1) N/A



#### HIGH EAVE CANOPY - AT EAVE

HIGH EAVE DETAIL w/ SOFFIT PANELS  
SEE WALL SHEETING ERECTION NOTES FOR WALL PANEL FASTENER LOCATIONS

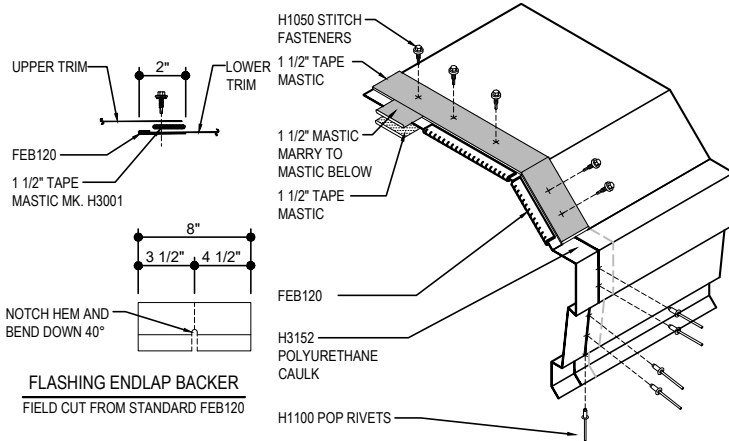
EQ3410

**EQ3411 - HIGH EAVE CANOPY - AT EAVE - IMP WALL**

[Download the DWG file by clicking here.](#)

**HIGH EAVE LAP & FLASHING BACKER**

SLIDE FIELD CUT SECTION FLASHING ENDLAP BACKER ONTO THE LOWER TRIM PIECE. PLACE TAPE MASTIC NEXT TO HEM OF THE BACKER (NOT ON TOP OF HEM). APPLY CONTINUOUS BEAD OF CAULK 1" FROM END OF TRIM DOWN PROFILE OF TRIM. FASTEN LAP WITH STITCH FASTENERS AND POP RIVETS AS SHOWN.



**FLASHING ENDLAP BACKER**  
FIELD CUT FROM STANDARD FEB120

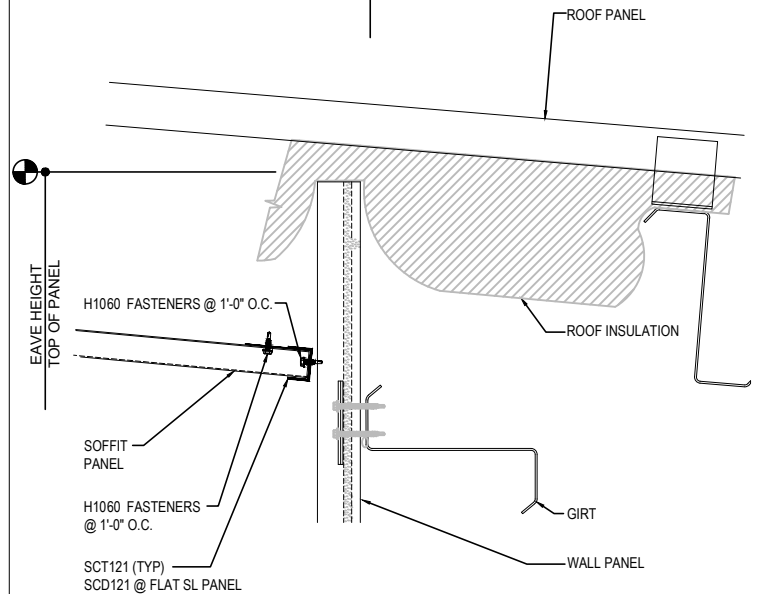
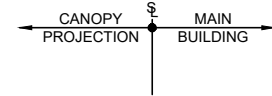
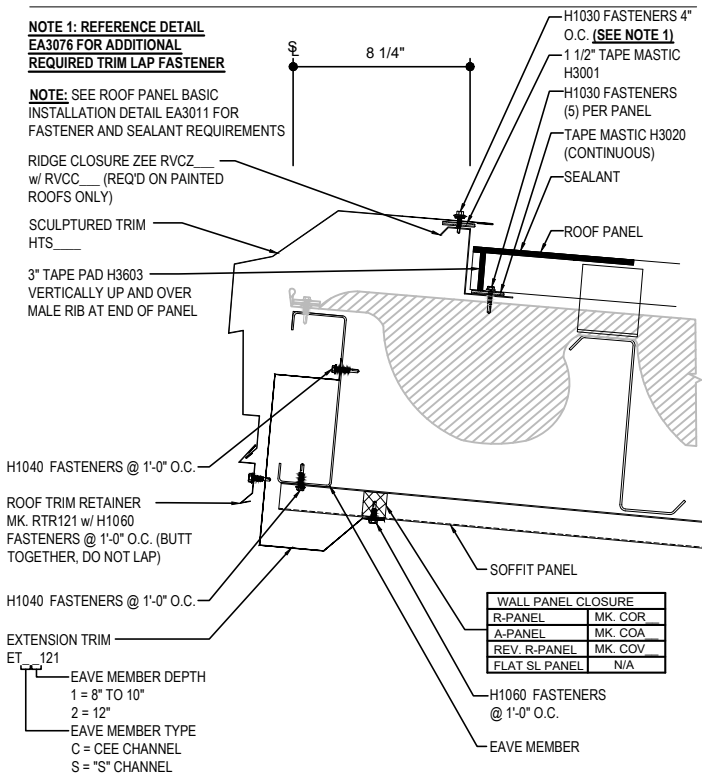
**NOTE 1: REFERENCE DETAIL EA3076 FOR ADDITIONAL REQUIRED TRIM LAP FASTENER**

**NOTE:** SEE ROOF PANEL BASIC INSTALLATION DETAIL EA3011 FOR FASTENER AND SEALANT REQUIREMENTS

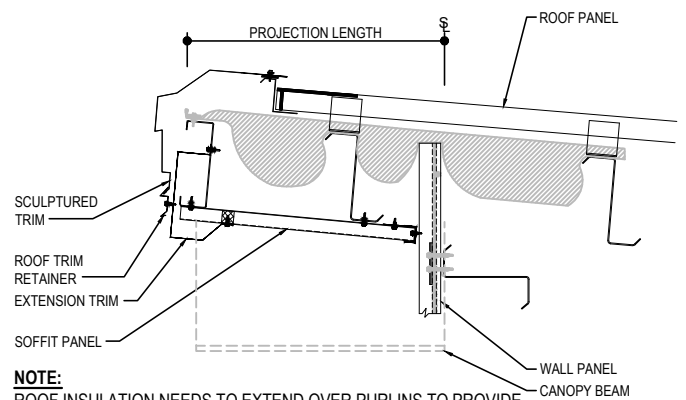
RIDGE CLOSURE ZEE RVCZ w/ RVCC (REQ'D ON PAINTED ROOFS ONLY)

SCULPTURED TRIM HTS

3" TAPE PAD H3603 VERTICALLY UP AND OVER MALE RIB AT END OF PANEL



**CANOPY SOFFIT AT BUILDING STEEL LINE**



**NOTE:**

ROOF INSULATION NEEDS TO EXTEND OVER PURLINS TO PROVIDE SUPPORT UNDER PANEL AT PURLIN LOCATIONS. WALL INSULATION TERMINATION SHOWN IS A SUGGESTION BUT MAY VARY.

**HIGH EAVE CANOPY - AT EAVE - IMP WALL**

HIGH EAVE DETAIL w/ SOFFIT PANELS  
SEE WALL SHEETING ERECTION NOTES FOR WALL PANEL FASTENER LOCATIONS

**EQ3411**

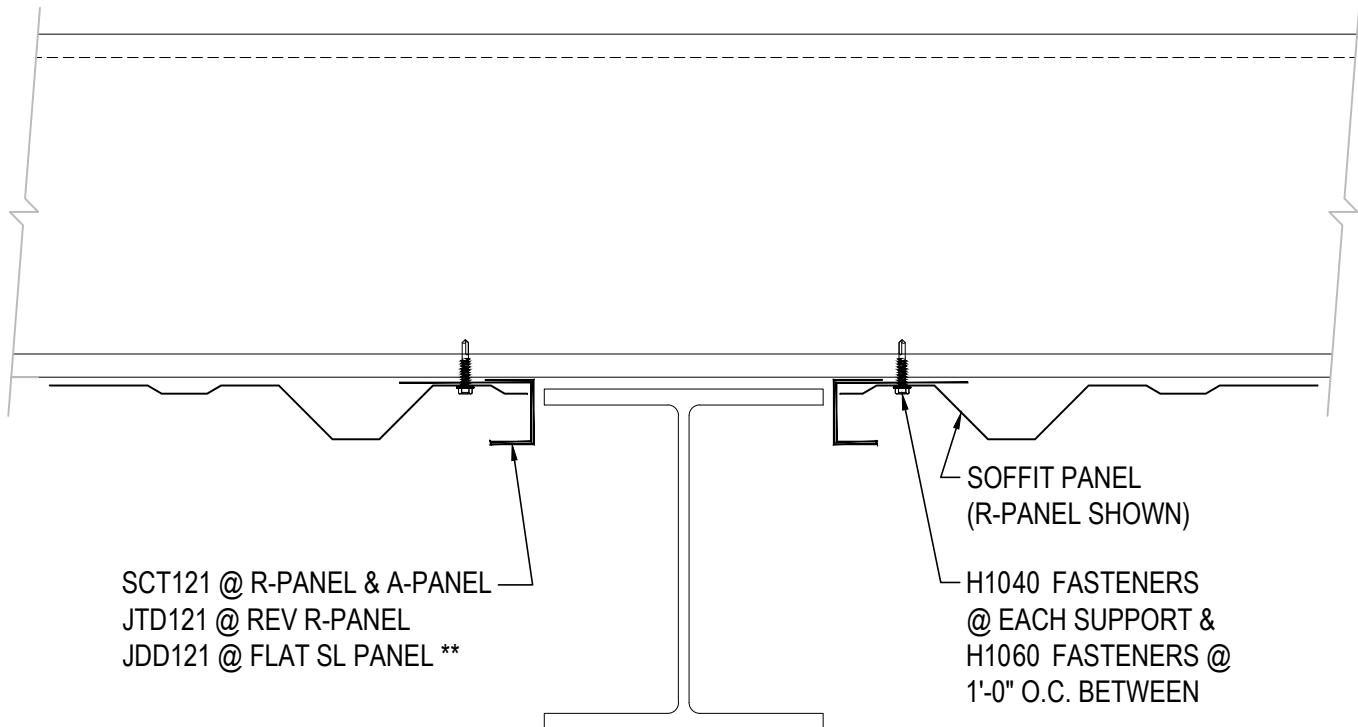
**Detailer Notes:**

1) N/A

EQ3510 - CANOPY SOFFIT TERMINATION AT BEAM

[Download the DWG file by clicking here.](#)

\*\* ATTACH FLAT SL PANEL  
TO TRIM WITH (1) H1100  
POP RIVET AT 3'-0" O.C.



\*\* ATTACH FLAT SL PANEL  
TO TRIM WITH (1) H1100  
POP RIVET AT 3'-0" O.C.

**CANOPY SOFFIT TERMINATION AT BEAM**

SEE SOFFIT PANEL ERECTION NOTE FOR SOFFIT PANEL FASTENER LOCATIONS

**EQ3510**

Detailer Notes:

1) THIS DETAIL IS DUPLICATE OF DQ0510 & EQ6510. DUPLICATE DETAILS ARE TO ENSURE THAT THEY ARE PLACED IN ORDER IN ERECTIN DRAWINGS.