

CANOPY SHEETING

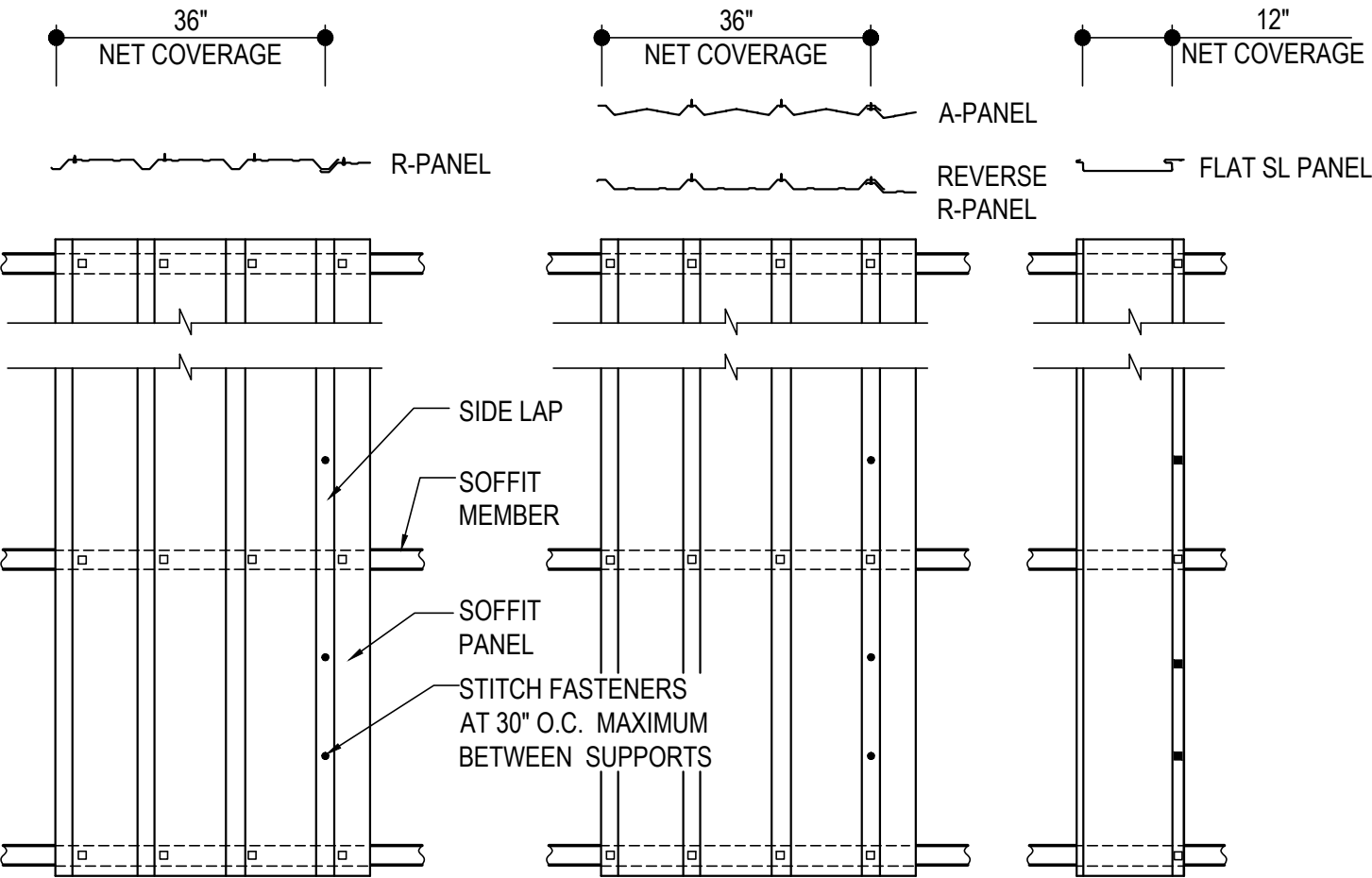
EQ3005 - SOFFIT PANEL ERECTION DETAIL
EQ3007 - FLAT SL PANEL ATTACHMENT DETAIL
EQ3010 - LOW EAVE CANOPY - AT EAVE
EQ3011 - LOW EAVE CANOPY - AT EAVE - IMP WALL
EQ3110 - BELOW EAVE CANOPY
EQ3111 - BELOW EAVE CANOPY - IMP WALL
EQ3214 - CANOPY TERMINATION - INSET-FLUSH
EQ3215 - CANOPY TERMINATION - BYPASS
EQ3410 - HIGH EAVE CANOPY - AT EAVE
EQ3411 - HIGH EAVE CANOPY - AT EAVE - IMP WALL
EQ3510 - CANOPY SOFFIT TERM AT BEAM

EQ3005 - SOFFIT PANEL ERECTION DETAIL

[Download the DWG file by clicking here.](#)

- H1060 STITCH FASTENER
- ▣ H1040 STRUCTURAL FASTENER
- NEGATIVE LOAD CLIP (MK. NLC-1)
(SEE FLAT SL PANEL ATTACHMENT DETAIL)

ERECTOR NOTE:
ERECTION OF THE SOFFIT PANEL MUST BE COORDINATED PROPERLY WITH THE SOFFIT TRIM CONDITIONS AS SHOWN IN THE ERECTION DETAILS. PLACEMENT AND ORIENTATION OF THE SOFFIT PANEL MAY VARY BY CONDITION AND SUPPORT MEMBERS MAY ALSO VARY. USE THIS FASTENING PATTERN UNLESS TRIM SECTION SHOWS A SPECIFIC PATTERN.



SOFFIT PANEL ERECTION DETAIL

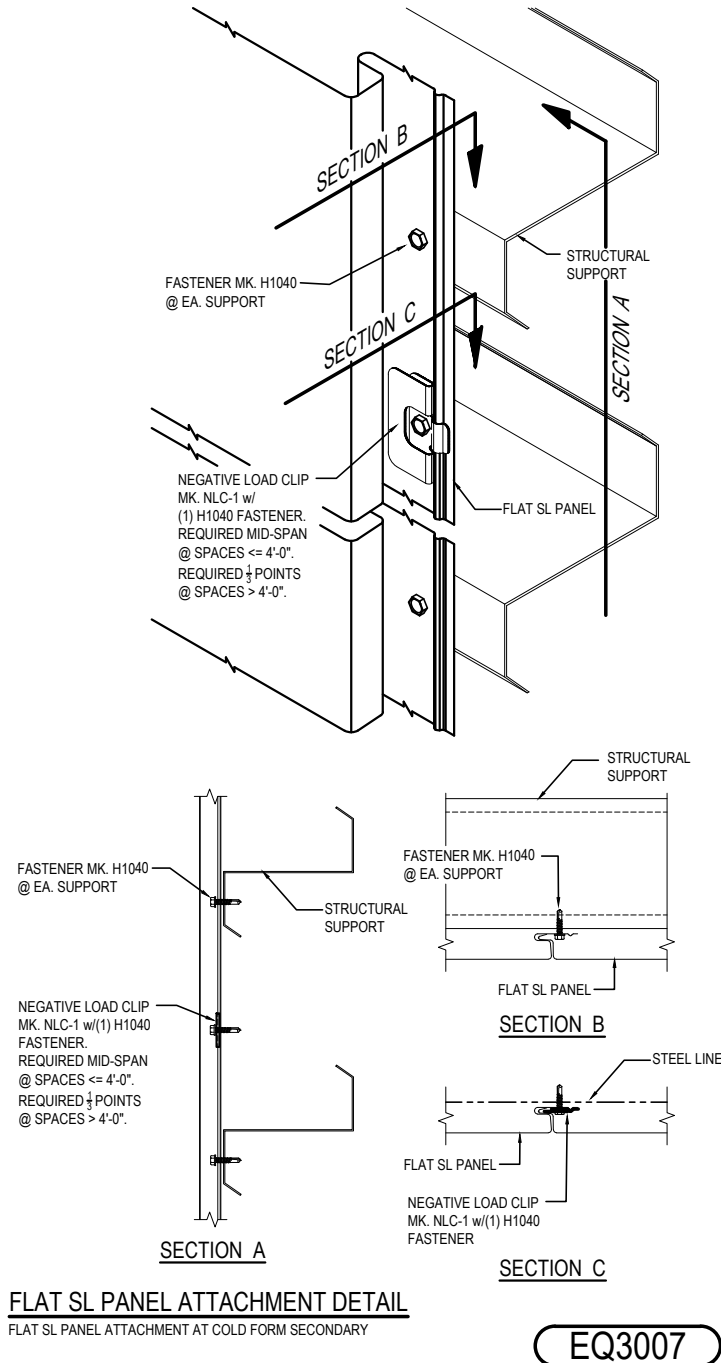
EQ3005

Detailer Notes:

1) THIS DETAIL IS A DUPLICATE OF DO0005, DQ0005, EO3005, EO6005, EQ6005, HK0005, & IK0005. DUPLICATE DETAILS ARE TO ENSURE THAT THEY ARE PLACED IN ORDER IN THE ERECTION DRAWINGS.

EQ3007 - FLAT SL PANEL ATTACHMENT DETAIL

[Download the DWG file by clicking here.](#)



Detailer Notes:

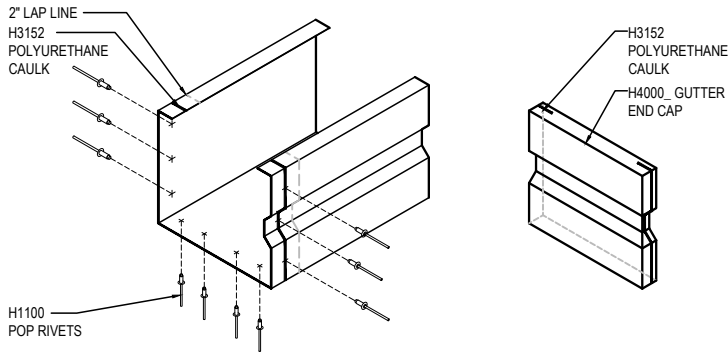
- 1) THIS DETAIL IS A DUPLICATE OF DO0007, DQ0007, EO3007, EO6007, EQ6007, HK0007, & IK0007. DUPLICATE DETAILS ARE TO ENSURE THAT THEY ARE PLACED IN ORDER IN THE ERECTION DRAWINGS.

EQ3010 - LOW EAVE CANOPY - AT EAVE

[Download the DWG file by clicking here.](#)

GUTTER LAP & END CAP

APPLY BEAD OF POLYURETHANE CAULK 1" FROM END OF TRIM AND LAP SECTIONS 2" AND FASTEN AS SHOWN. TO TERMINATE THE GUTTER APPLY POLYURETHANE CAULK TO THREE SIDES OF END CAP AND TOP RETURN AREA AS SHOWN AND INSERT 1/2" INTO END OF GUTTER. ATTACH WITH RIVETS SAME AS END LAP.

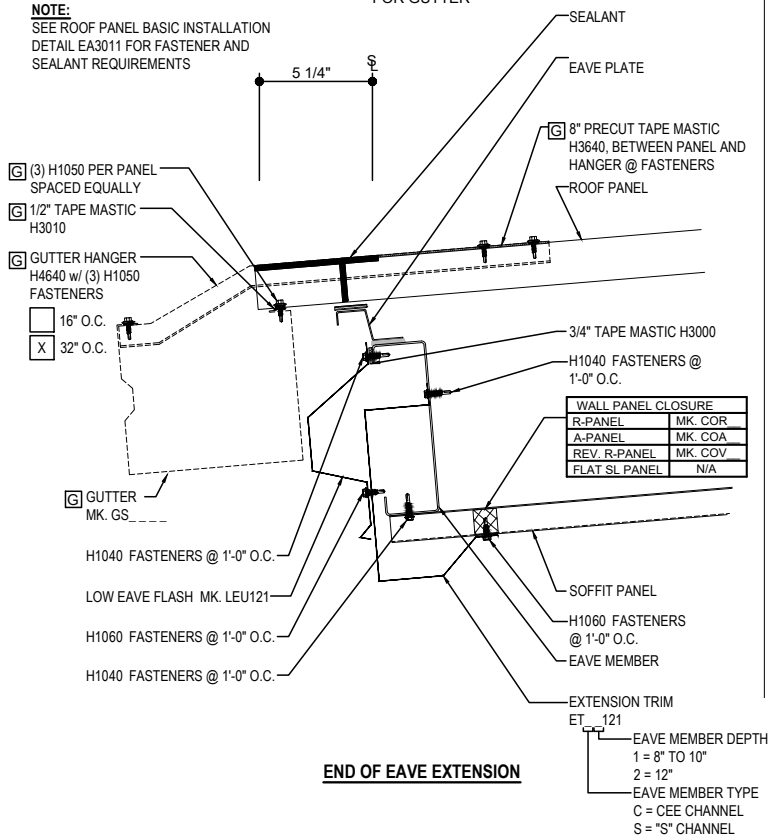


NOTE 1: PANEL RIB MUST BE SEAMED PRIOR TO INSTALLING GUTTER BRACKET!

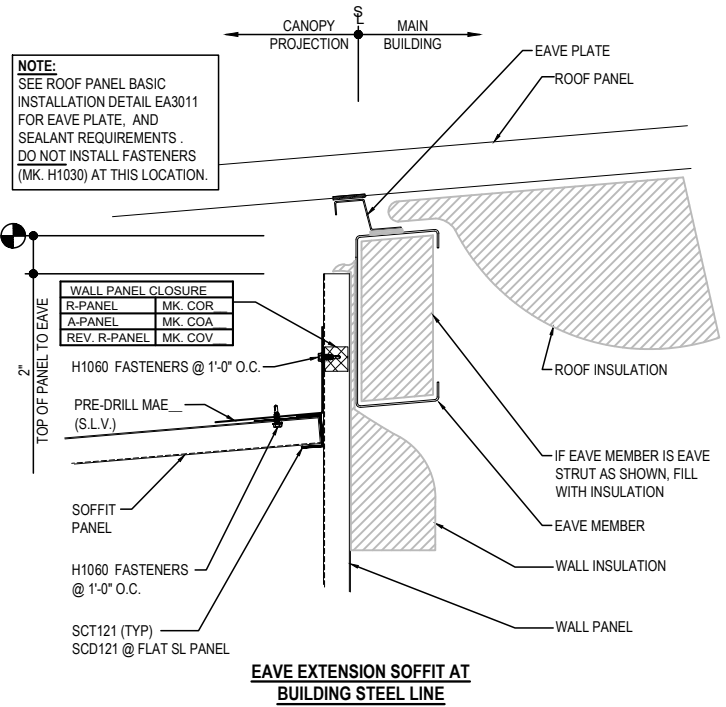
GUTTER SHOWN IF REQ'D

REQ'D ONLY FOR GUTTER

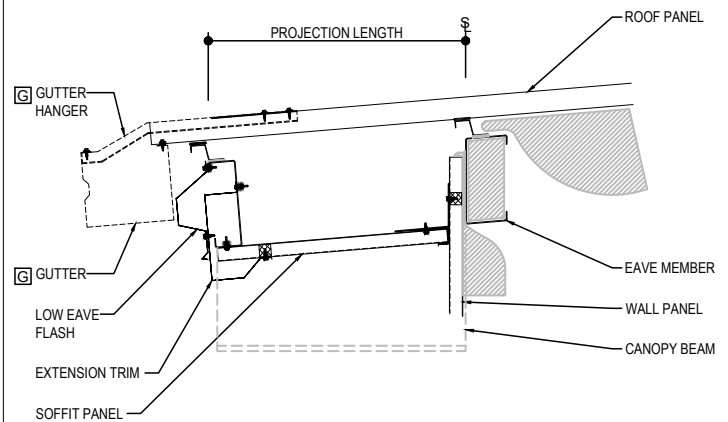
NOTE: SEE ROOF PANEL BASIC INSTALLATION DETAIL EA3011 FOR FASTENER AND SEALANT REQUIREMENTS



END OF EAVE EXTENSION



EAVE EXTENSION SOFFIT AT BUILDING STEEL LINE



LOW EAVE CANOPY - AT EAVE

EAVE WITH OR WITHOUT GUTTER DETAIL w/ SOFFIT PANELS
SEE WALL SHEETING ERECTION NOTES FOR WALL PANEL FASTENER LOCATIONS

EQ3010

Detailer Notes:

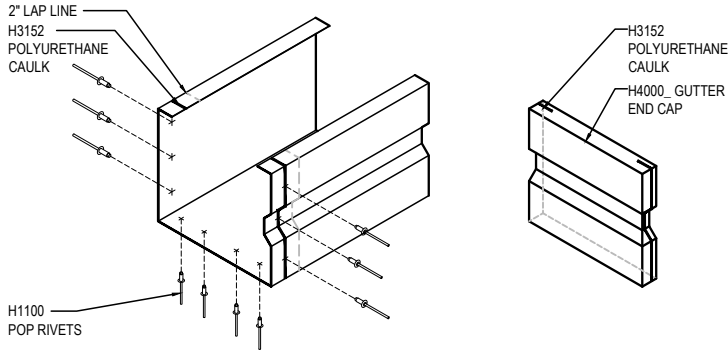
1) N/A

EQ3011 - LOW EAVE CANOPY - AT EAVE - IMP WALL

[Download the DWG file by clicking here.](#)

GUTTER LAP & END CAP

APPLY BEAD OF POLYURETHANE CAULK 1" FROM END OF TRIM AND LAP SECTIONS 2" AND FASTEN AS SHOWN. TO TERMINATE THE GUTTER APPLY POLYURETHANE CAULK TO THREE SIDES OF END CAP AND TOP RETURN AREA AS SHOWN AND INSERT 1/2" INTO END OF GUTTER. ATTACH WITH RIVETS SAME AS END LAP.

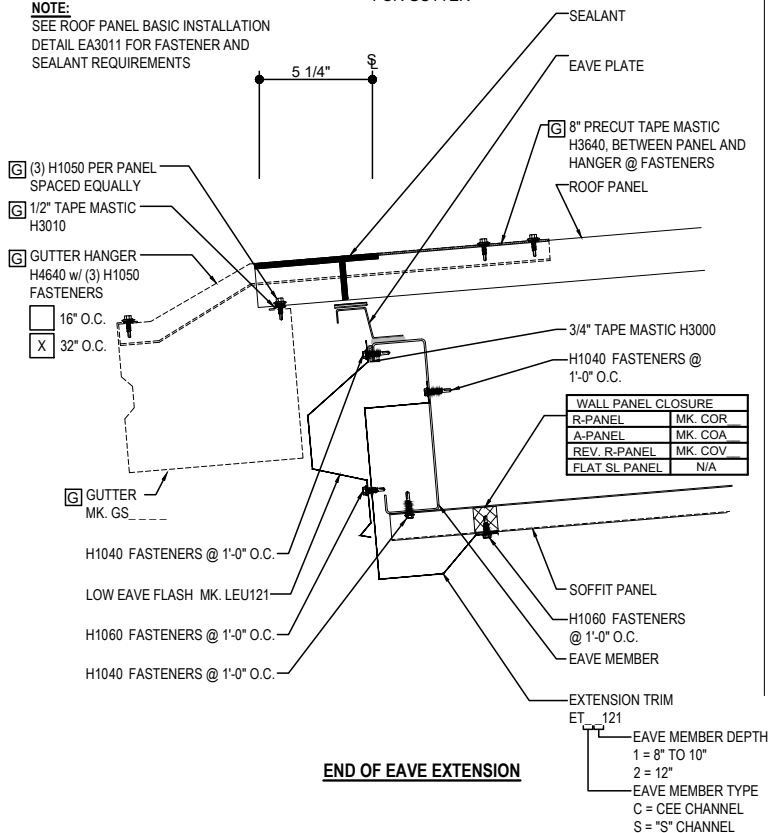


NOTE 1: PANEL RIB MUST BE SEAMED PRIOR TO INSTALLING GUTTER BRACKET!

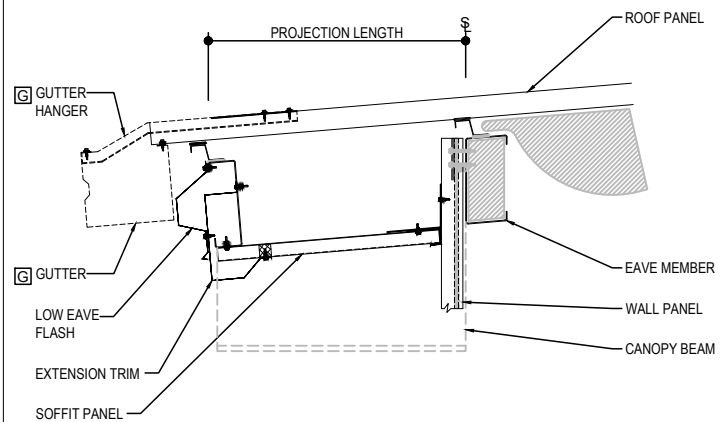
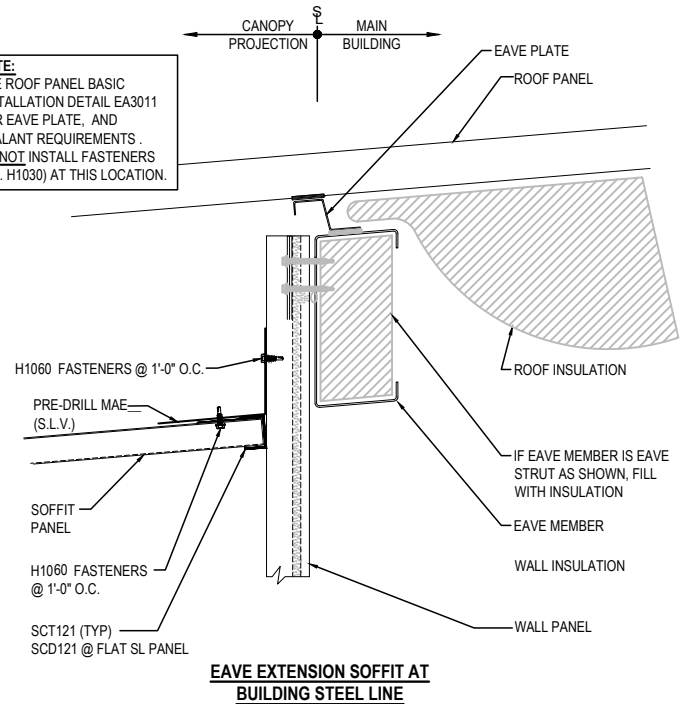
GUTTER SHOWN IF REQ'D

REQ'D ONLY FOR GUTTER

NOTE: SEE ROOF PANEL BASIC INSTALLATION DETAIL EA3011 FOR FASTENER AND SEALANT REQUIREMENTS



NOTE: SEE ROOF PANEL BASIC INSTALLATION DETAIL EA3011 FOR EAVE PLATE, AND SEALANT REQUIREMENTS. DO NOT INSTALL FASTENERS (MK. H1030) AT THIS LOCATION.



LOW EAVE CANOPY - AT EAVE - IMP WALLS

EAVE WITH OR WITHOUT GUTTER DETAIL w/ SOFFIT PANELS
SEE WALL SHEETING ERECTION NOTES FOR WALL PANEL FASTENER LOCATIONS

EQ3011

Detailer Notes:

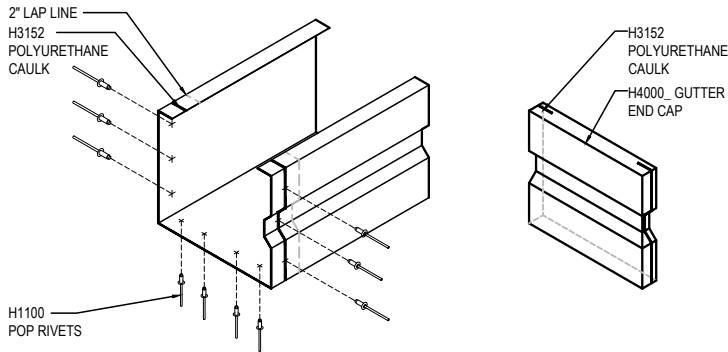
1) N/A

EQ3110 - BELOW EAVE CANOPY

[Download the DWG file by clicking here.](#)

GUTTER LAP & END CAP

APPLY BEAD OF POLYURETHANE CAULK 1" FROM END OF TRIM AND LAP SECTIONS 2" AND FASTEN AS SHOWN. TO TERMINATE THE GUTTER APPLY POLYURETHANE CAULK TO THREE SIDES OF END CAP AND TOP RETURN AREA AS SHOWN AND INSERT 1/2" INTO END OF GUTTER. ATTACH WITH RIVETS SAME AS END LAP.

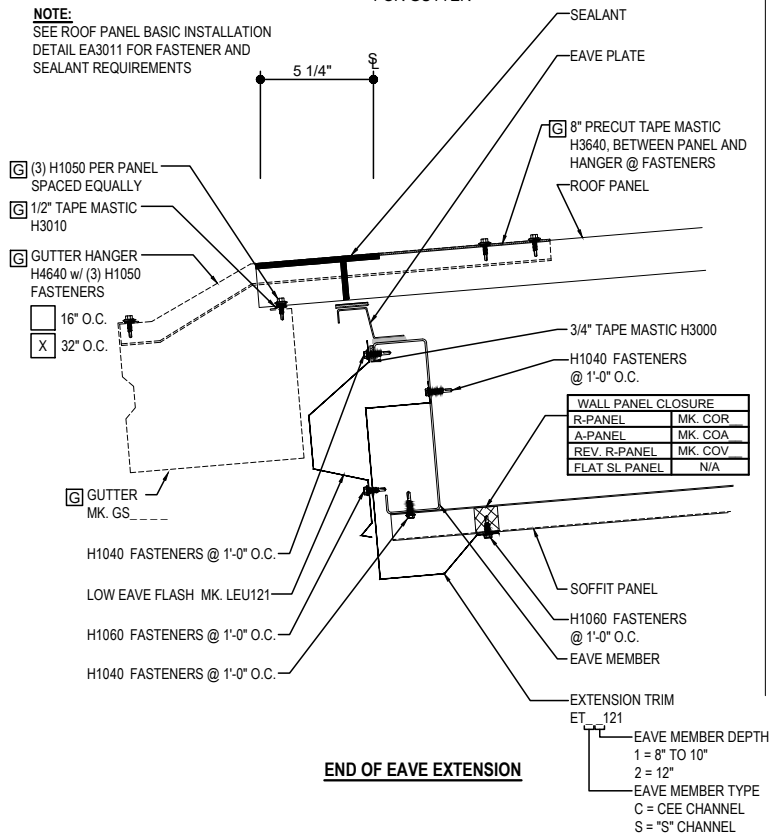


NOTE 1: PANEL RIB MUST BE SEAMED PRIOR TO INSTALLING GUTTER BRACKET!

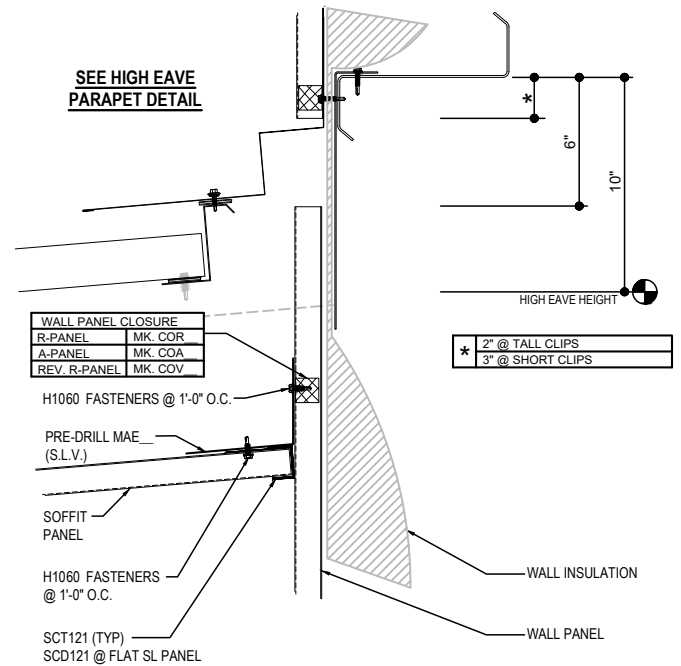
GUTTER SHOWN IF REQ'D

REQ'D ONLY FOR GUTTER

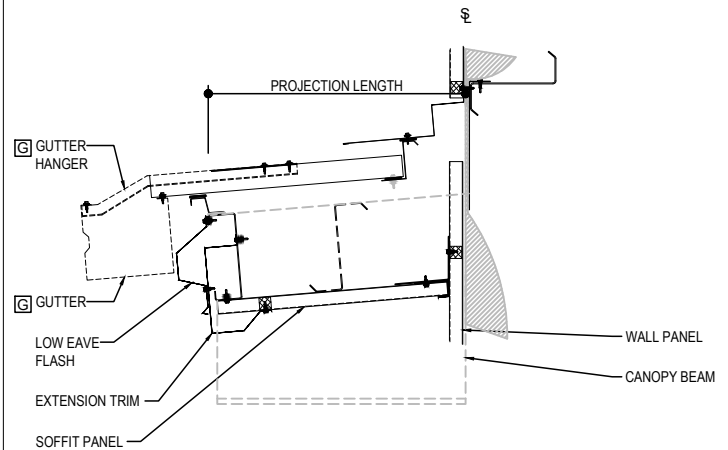
NOTE: SEE ROOF PANEL BASIC INSTALLATION DETAIL EA3011 FOR FASTENER AND SEALANT REQUIREMENTS



SEE HIGH EAVE PARAPET DETAIL



EAVE EXTENSION SOFFIT AT BUILDING STEEL LINE



BELOW EAVE CANOPY

EAVE WITH OR WITHOUT GUTTER DETAIL w/ SOFFIT PANELS
SEE WALL SHEETING ERECTION NOTES FOR WALL PANEL FASTENER LOCATIONS

EQ3110

Detailer Notes:

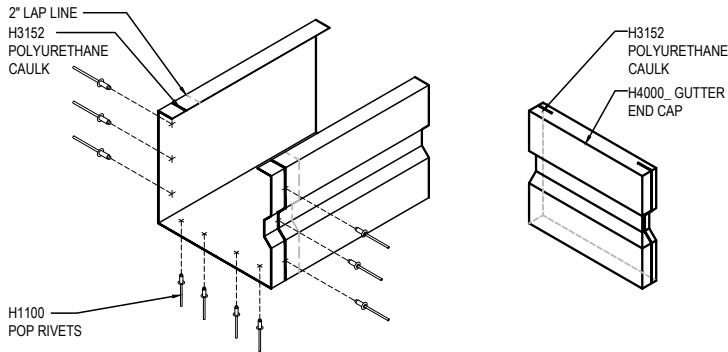
1) N/A

EQ3111 - BELOW EAVE CANOPY - IMP WALL

[Download the DWG file by clicking here.](#)

GUTTER LAP & END CAP

APPLY BEAD OF POLYURETHANE CAULK 1" FROM END OF TRIM AND LAP SECTIONS 2" AND FASTEN AS SHOWN. TO TERMINATE THE GUTTER APPLY POLYURETHANE CAULK TO THREE SIDES OF END CAP AND TOP RETURN AREA AS SHOWN AND INSERT 1/2" INTO END OF GUTTER. ATTACH WITH RIVETS SAME AS END LAP.

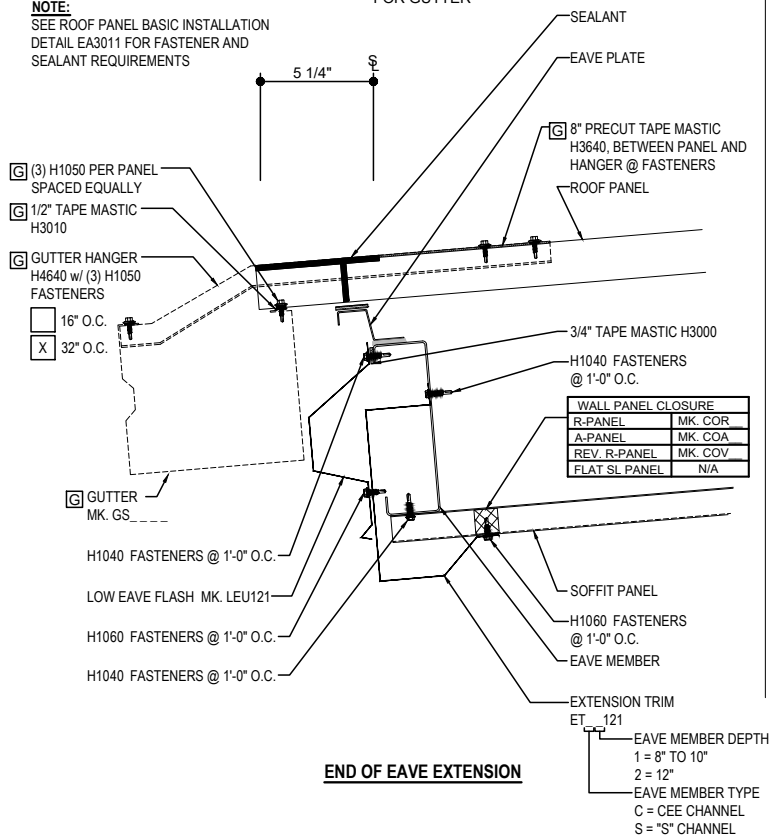


NOTE 1: PANEL RIB MUST BE SEAMED PRIOR TO INSTALLING GUTTER BRACKET!

GUTTER SHOWN IF REQ'D

REQ'D ONLY FOR GUTTER

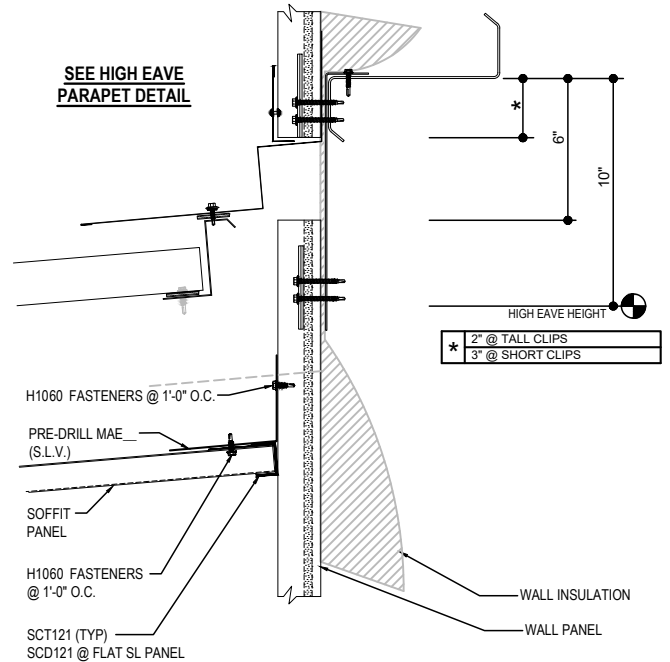
NOTE:
SEE ROOF PANEL BASIC INSTALLATION DETAIL EA3011 FOR FASTENER AND SEALANT REQUIREMENTS



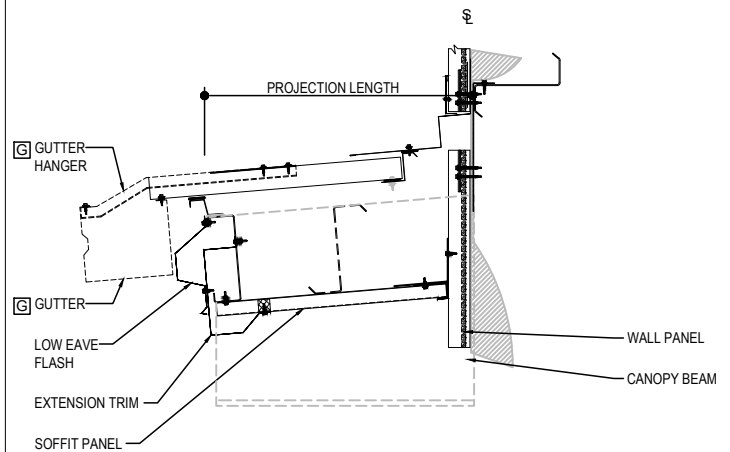
END OF EAVE EXTENSION

EAVE MEMBER DEPTH
1 = 8" TO 10"
2 = 12"
EAVE MEMBER TYPE
C = CEE CHANNEL
S = "S" CHANNEL

SEE HIGH EAVE PARAPET DETAIL



EAVE EXTENSION SOFFIT AT BUILDING STEEL LINE



BELOW EAVE CANOPY - IMP WALL

EAVE WITH OR WITHOUT GUTTER DETAIL w/ SOFFIT PANELS
SEE WALL SHEETING ERECTION NOTES FOR WALL PANEL FASTENER LOCATIONS

EQ3111

Detailer Notes:

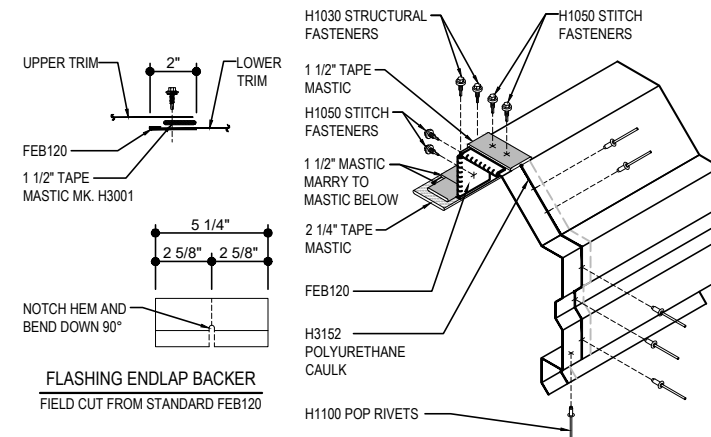
1) N/A

EQ3214 - CANOPY TERMINATION - INSET-FLUSH

[Download the DWG file by clicking here.](#)

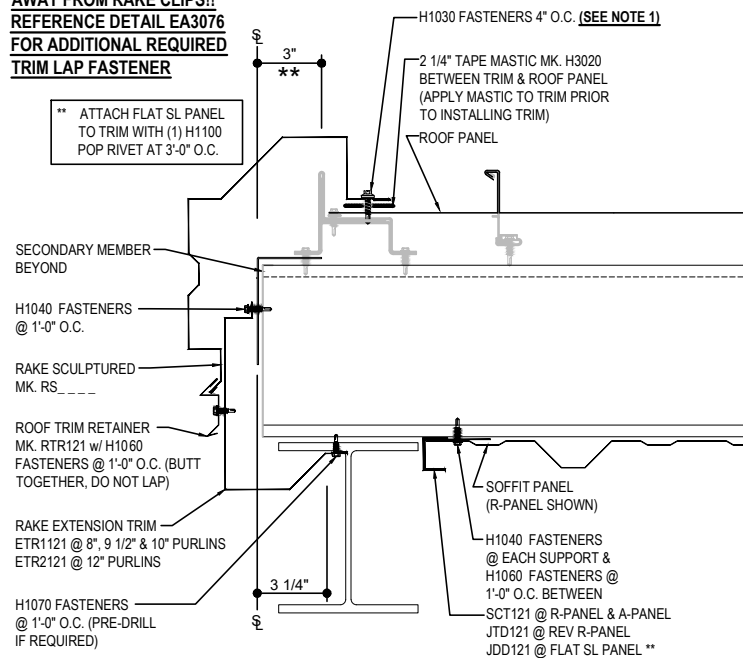
RAKE LAP & FLASHING BACKER

SLIDE FIELD CUT SECTION OF FLASHING ENDLAP BACKER ONTO THE LOWER TRIM PIECE AS SHOWN BELOW. PLACE TAPE MASTIC NEXT TO HEM OF THE BACKER (NOT ON TOP OF HEM). APPLY CONTINUOUS BEAD OF CAULK 1" FROM END OF TRIM DOWN PROFILE OF TRIM. FASTEN LAP WITH STITCH FASTENERS AND POP RIVETS AS SHOWN. ROOF STRUCTURAL FASTENERS SHOULD BE USED TO FASTEN THROUGH PANEL FLAT INTO RAKE ANGLE.



NOTE 1: KEEP FASTENERS 2 1/2"

AWAY FROM RAKE CLIPS!!
REFERENCE DETAIL EA3076
FOR ADDITIONAL REQUIRED
TRIM LAP FASTENER



CANOPY TERMINATION - INSET / FLUSH

RAKE AT CANOPY TERMINATION

EQ3214

Detailer Notes:

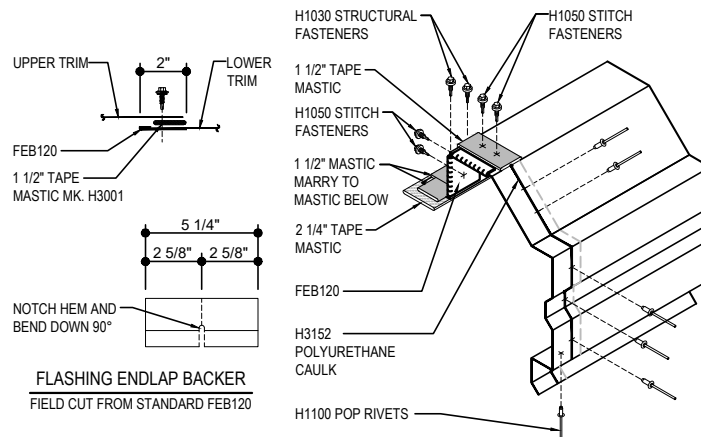
- 1) USE THIS DETAIL WITH FLUSH OR INSET ENDWALL CONDITIONS.

EQ3215 - CANOPY TERMINATION - BYPASS

[Download the DWG file by clicking here.](#)

RAKE LAP & FLASHING BACKER

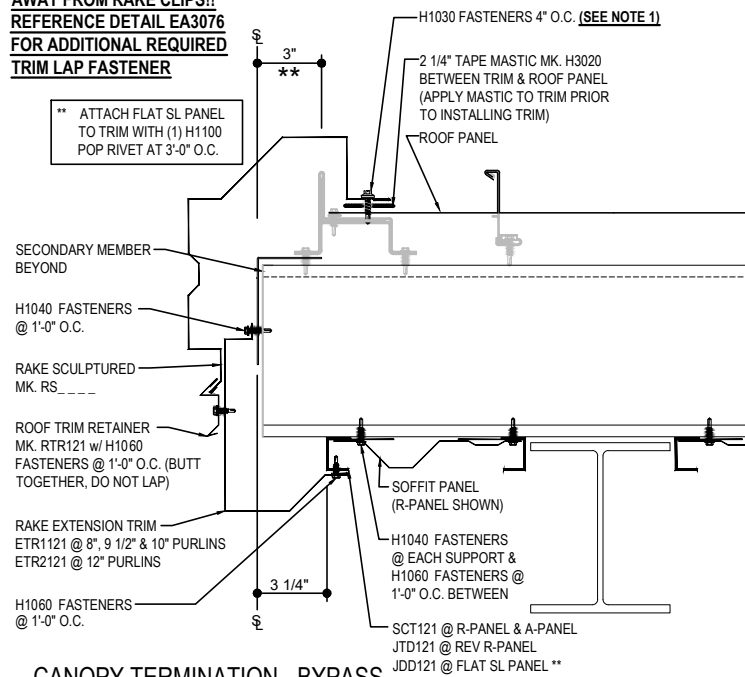
SLIDE FIELD CUT SECTION OF FLASHING ENDLAP BACKER ONTO THE LOWER TRIM PIECE AS SHOWN BELOW. PLACE TAPE MASTIC NEXT TO HEM OF THE BACKER (NOT ON TOP OF HEM). APPLY CONTINUOUS BEAD OF CAULK 1" FROM END OF TRIM DOWN PROFILE OF TRIM. FASTEN LAP WITH STITCH FASTENERS AND POP RIVETS AS SHOWN. ROOF STRUCTURAL FASTENERS SHOULD BE USED TO FASTEN THROUGH PANEL FLAT INTO RAKE ANGLE.



NOTE 1: KEEP FASTENERS 2 1/2"

AWAY FROM RAKE CLIPS!!
REFERENCE DETAIL EA3076
FOR ADDITIONAL REQUIRED
TRIM LAP FASTENER

** ATTACH FLAT SL PANEL TO TRIM WITH (1) H1100 POP RIVET AT 3'-0" O.C.



CANOPY TERMINATION - BYPASS

RAKE AT CANOPY TERMINATION

EQ3215

Detailer Notes:

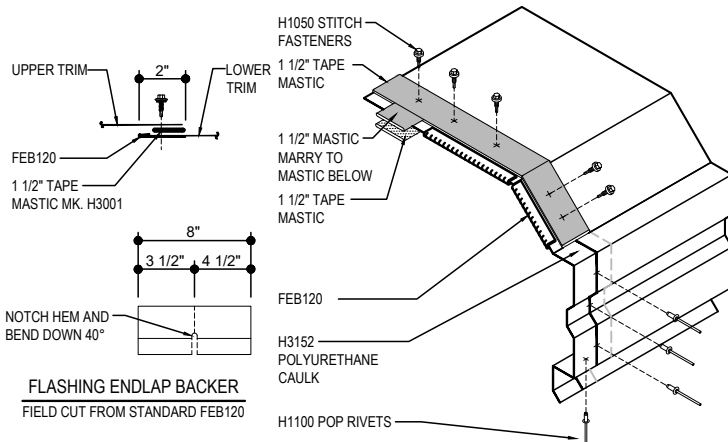
- 1) USE THIS DETAIL WITH BYPASS ENDWALL CONDITIONS.

EQ3410 - HIGH EAVE CANOPY - AT EAVE

[Download the DWG file by clicking here.](#)

HIGH EAVE LAP & FLASHING BACKER

SLIDE FIELD CUT SECTION FLASHING ENDLAP BACKER ONTO THE LOWER TRIM PIECE. PLACE TAPE MASTIC NEXT TO HEM OF THE BACKER (NOT ON TOP OF HEM). APPLY CONTINUOUS BEAD OF CAULK 1" FROM END OF TRIM DOWN PROFILE OF TRIM. FASTEN LAP WITH STITCH FASTENERS AND POP RIVETS AS SHOWN.



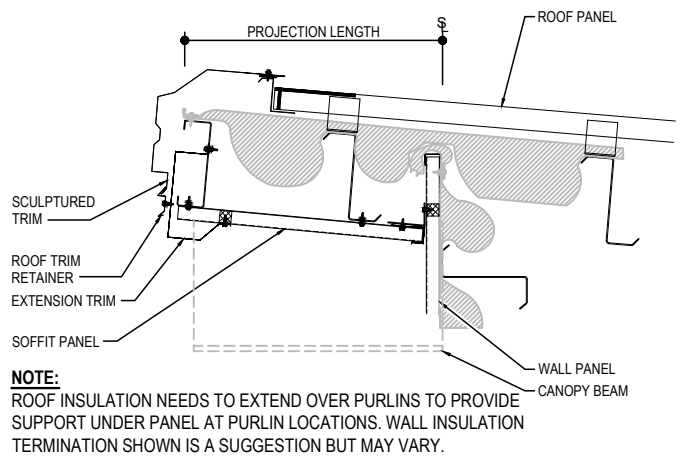
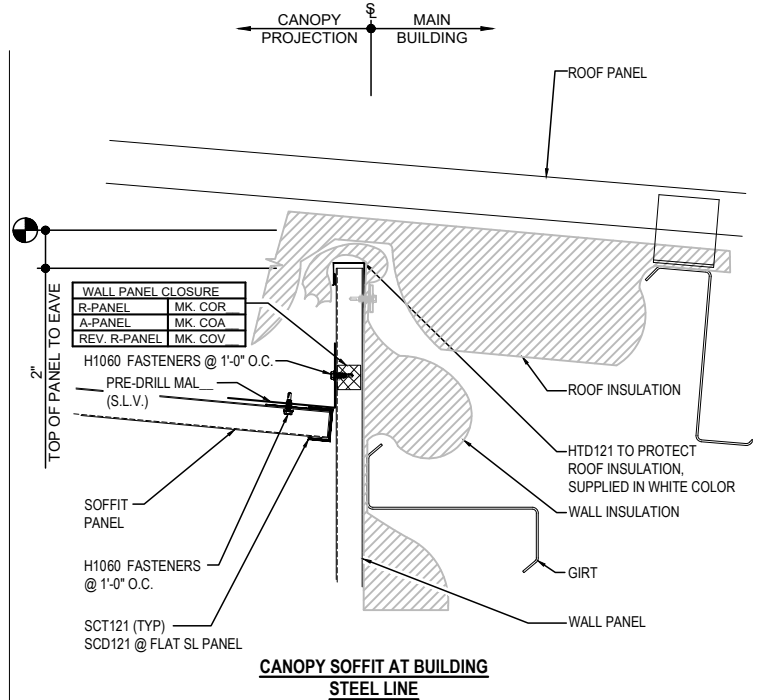
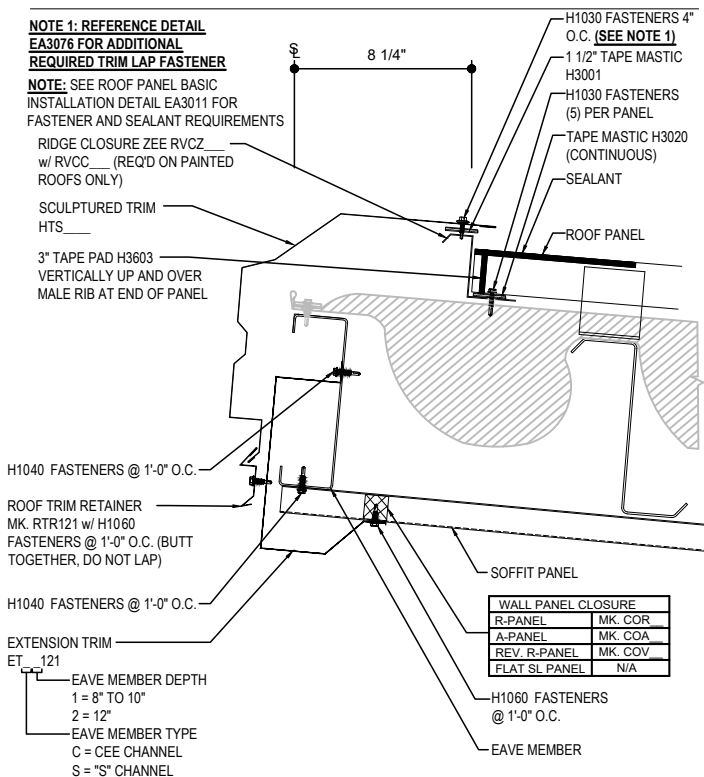
NOTE 1: REFERENCE DETAIL EA3076 FOR ADDITIONAL REQUIRED TRIM LAP FASTENER

NOTE: SEE ROOF PANEL BASIC
INSTALLATION DETAIL EA3011 FOR
FASTENER AND SEALANT REQUIREMENTS

RIDGE CLOSURE ZEE RVCZ
w/ RVCC (REQ'D ON PAINTED
ROOFS ONLY)

SCULPTURED TRIM
HTS

3" TAPE PAD H3603
VERTICALLY UP AND OVER
MALE RIB AT END OF PANEL



HIGH EAVE CANOPY - AT EAVE

HIGH EAVE DETAIL w/ SOFFIT PANELS
SEE WALL SHEETING ERECTION NOTES FOR WALL PANEL FASTENER LOCATIONS

EQ3410

Detailer Notes:

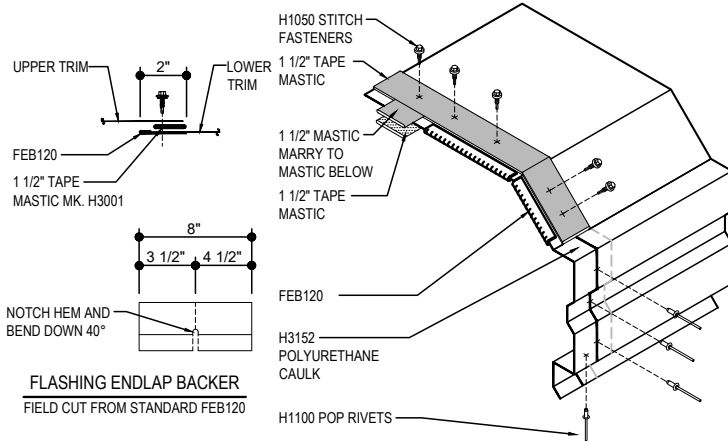
1) N/A

EQ3411 - HIGH EAVE CANOPY - AT EAVE - IMP WALL

[Download the DWG file by clicking here.](#)

HIGH EAVE LAP & FLASHING BACKER

SLIDE FIELD CUT SECTION FLASHING ENDLAP BACKER ONTO THE LOWER TRIM PIECE. PLACE TAPE MASTIC NEXT TO HEM OF THE BACKER (NOT ON TOP OF HEM). APPLY CONTINUOUS BEAD OF CAULK 1" FROM END OF TRIM DOWN PROFILE OF TRIM. FASTEN LAP WITH STITCH FASTENERS AND POP RIVETS AS SHOWN.



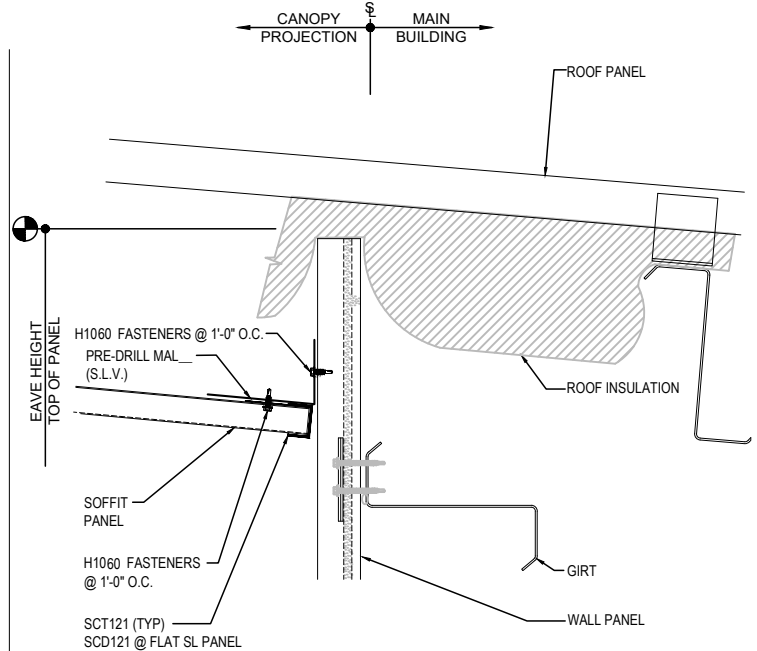
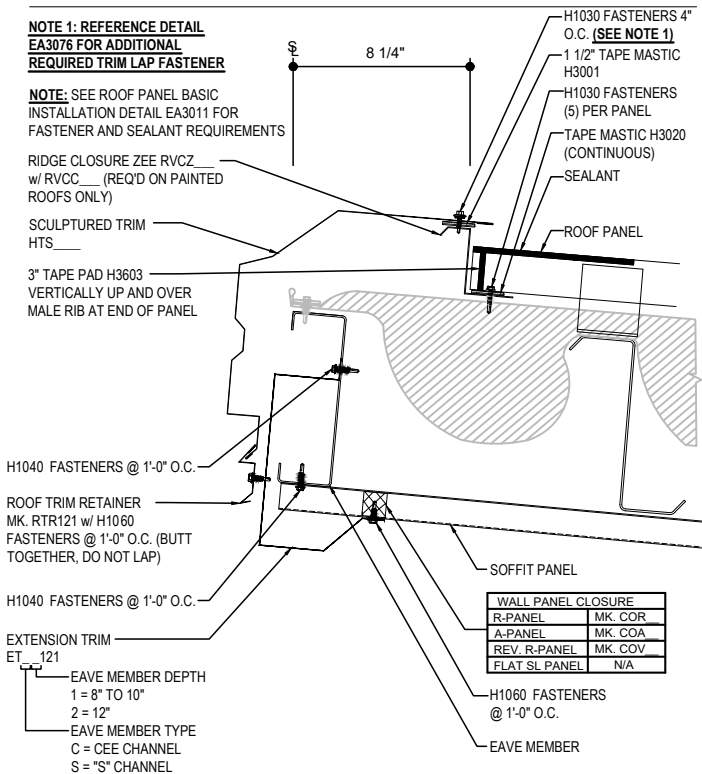
NOTE 1: REFERENCE DETAIL EA3076 FOR ADDITIONAL REQUIRED TRIM LAP FASTENER

NOTE: SEE ROOF PANEL BASIC INSTALLATION DETAIL EA3011 FOR FASTENER AND SEALANT REQUIREMENTS

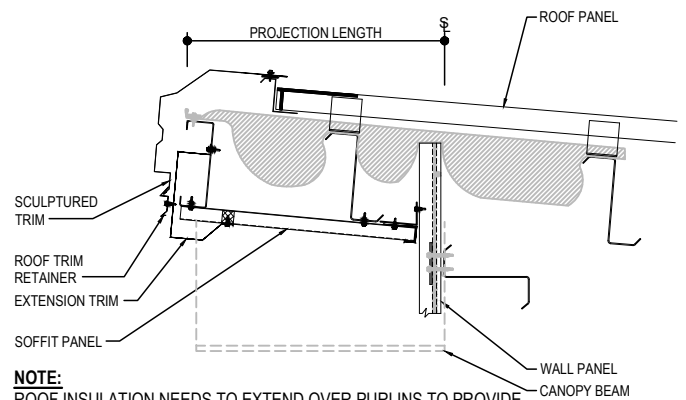
RIDGE CLOSURE ZEE RVCZ w/ RVCC (REQ'D ON PAINTED ROOFS ONLY)

SCULPTURED TRIM HTS

3" TAPE PAD H3603 VERTICALLY UP AND OVER MALE RIB AT END OF PANEL



CANOPY SOFFIT AT BUILDING STEEL LINE



NOTE:

ROOF INSULATION NEEDS TO EXTEND OVER PURLINS TO PROVIDE SUPPORT UNDER PANEL AT PURLIN LOCATIONS. WALL INSULATION TERMINATION SHOWN IS A SUGGESTION BUT MAY VARY.

HIGH EAVE CANOPY - AT EAVE - IMP WALL

HIGH EAVE DETAIL w/ SOFFIT PANELS
SEE WALL SHEETING ERECTION NOTES FOR WALL PANEL FASTENER LOCATIONS

EQ3411

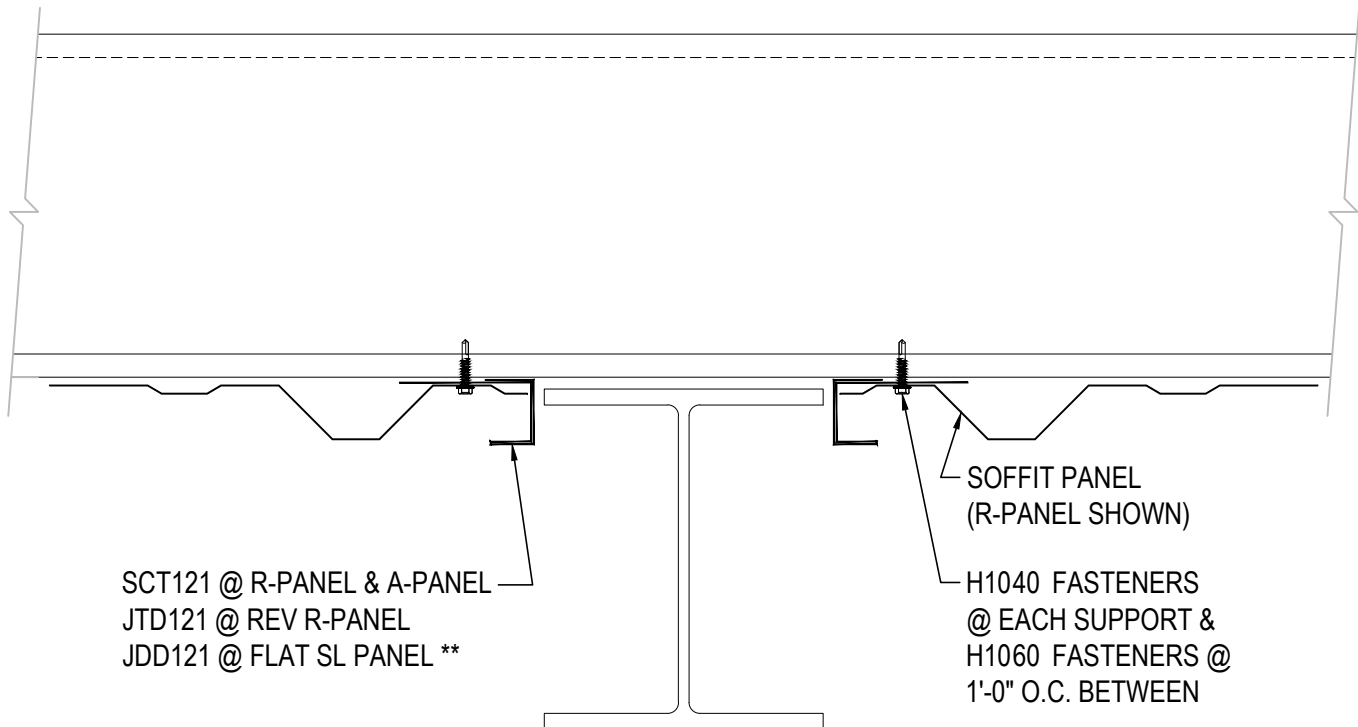
Detailer Notes:

1) N/A

EQ3510 - CANOPY SOFFIT TERMINATION AT BEAM

[Download the DWG file by clicking here.](#)

** ATTACH FLAT SL PANEL
TO TRIM WITH (1) H1100
POP RIVET AT 3'-0" O.C.



** ATTACH FLAT SL PANEL
TO TRIM WITH (1) H1100
POP RIVET AT 3'-0" O.C.

CANOPY SOFFIT TERMINATION AT BEAM

SEE SOFFIT PANEL ERECTION NOTE FOR SOFFIT PANEL FASTENER LOCATIONS

EQ3510

Detailer Notes:

1) THIS DETAIL IS DUPLICATE OF DQ0510 & EQ6510. DUPLICATE DETAILS ARE TO ENSURE THAT THEY ARE PLACED IN ORDER IN ERECTIN DRAWINGS.