

## RAKE DETAILS

FE2010-NBS - RAKE DETAIL w WALL PANELS

FE2015-NBS - RAKE DETAIL w ROOF JOIST & WALL PANELS

FE2050-NBS - OPEN RAKE DETAIL w WALL CONSTRUCTION BY OTHERS

FE2055-NBS - STARTING RAKE DETAIL w JOIST & WALL SYSTEM BY OTHERS

FE2610-NBS - STARTING RAKE DETAIL w INSULATED WALL SYSTEM

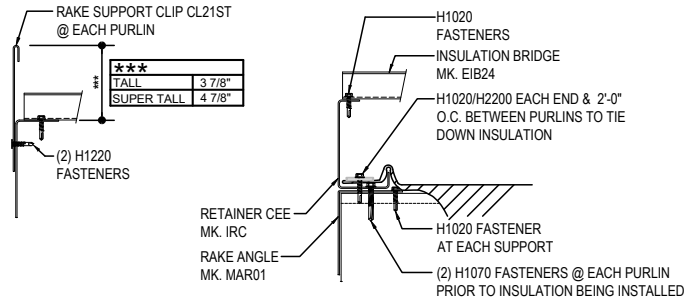
FE2615-NBS - RAKE DETAIL w ROOF JOIST & INSULATED WALL SYSTEM

---

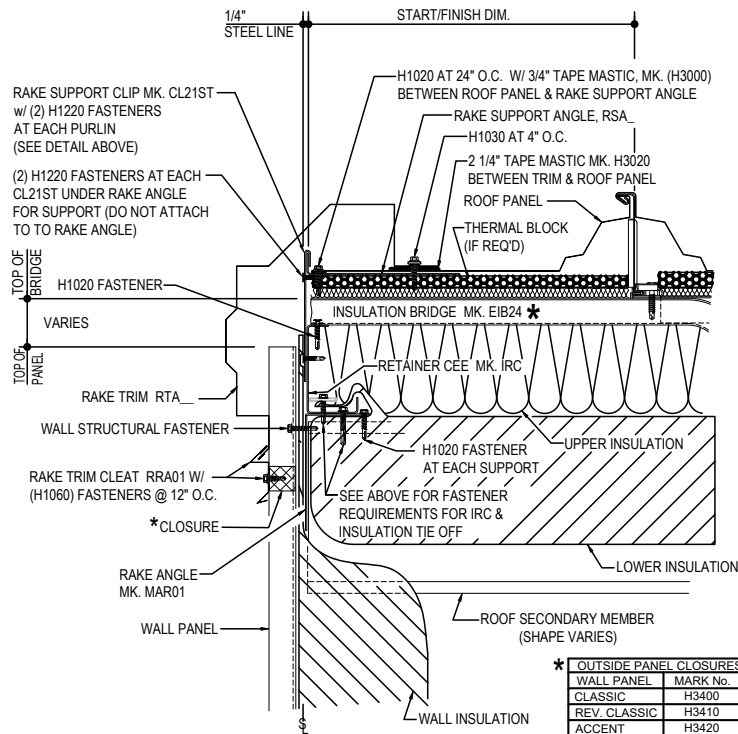
## FE2010 - RAKE DETAIL w/ WALL PANELS

[Download the DWG file by clicking here.](#)

**ERECTOR NOTE:** \*  
STARTING RAKE CONDITION IS SHOWN. BRIDGE PREPARATION WILL VARY BETWEEN THE STARTING AND ENDING RAKES, SEE BRIDGE INSTALLATION DETAILS FOR SPECIFIC BRIDGE REQUIREMENTS.



### ALT. CL21ST SUPPORT CLIP INSTALLATION DETAIL USED WHEN WALL PANELS ARE INSTALLED FIRST



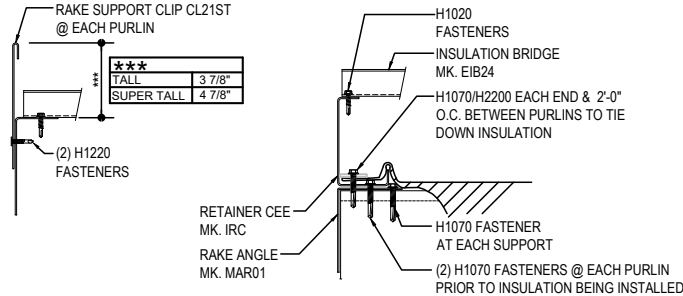
### R-Boost™ RAKE DETAIL RAKE DETAIL w/ STANDARD WALL PANELS

FE2010

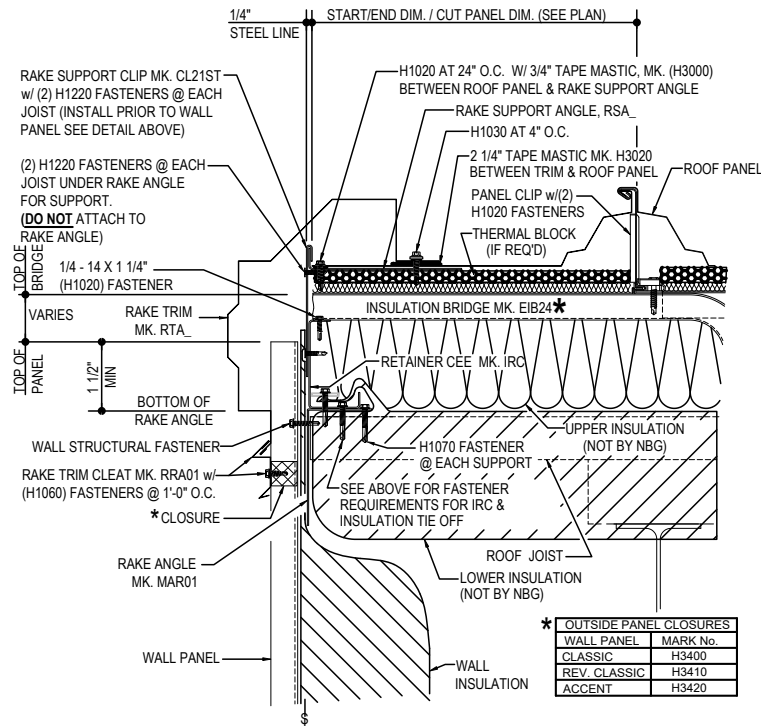
## FE2015 - RAKE DETAIL w/ROOF JOIST & WALL PANELS

[Download the DWG file by clicking here.](#)

**ERECTOR NOTE: \***  
STARTING RAKE CONDITION IS SHOWN. BRIDGE PREPERATION WILL VARY BETWEEN THE STARTING AND ENDING RAKES, SEE BRIDGE INSTALLATION DETAILS FOR SPECIFIC BRIDGE REQUIREMENTS.



**ALT. CL21ST SUPPORT CLIP INSTALLATION DETAIL**  
USED WHEN WALL PANELS ARE INSTALLED FIRST



* OUTSIDE PANEL CLOSURES	
WALL PANEL	MARK No.
CLASSIC	H3400
REV. CLASSIC	H3410
ACCENT	H3420

### R-Boost™ RAKE DETAIL

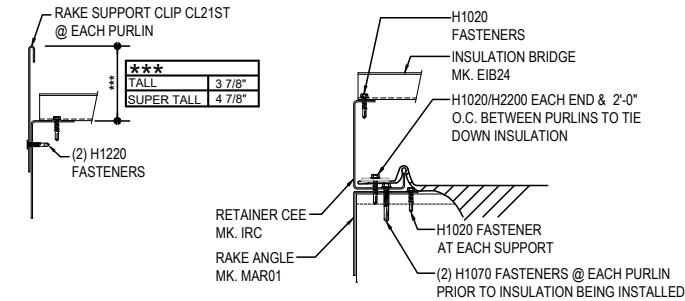
RAKE DETAIL w/ ROOF JOIST AND STANDARD WALL PANELS

FE2015

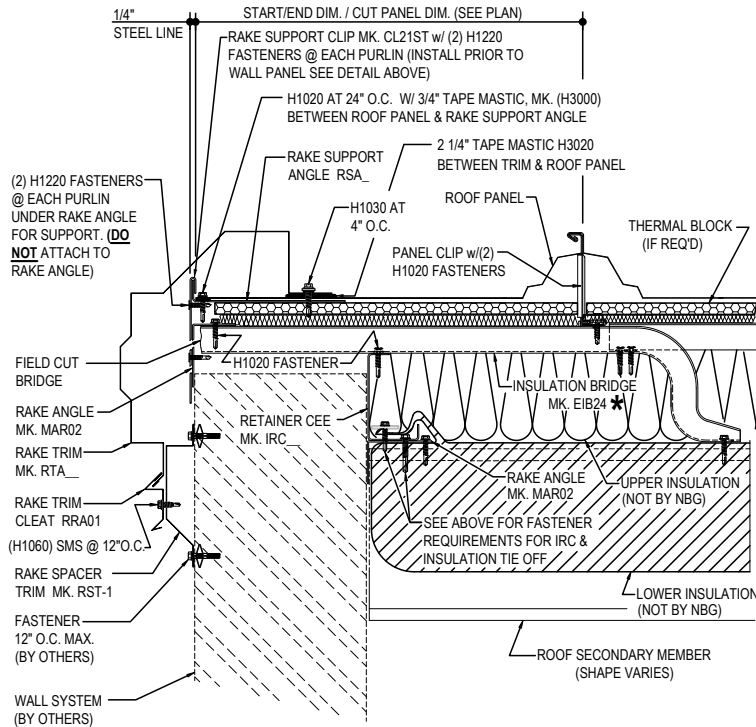
## FE2050 - OPEN RAKE DETAIL w/ WALL CONSTRUCTION BY OTHERS

[Download the DWG file by clicking here.](#)

**ERECTOR NOTE: \***  
STARTING RAKE CONDION IS SHOWN. BRIDGE PREPERATION WILL VARY BETWEEN THE STARTING AND ENDING RAKES, SEE BRIDGE INSTALLATION DETAILS FOR SPECIFIC BRIDGE REQUIREMENTS.



**ALT. CL21ST SUPPORT CLIP INSTALLATION DETAIL**  
USED WHEN WALL PANELS ARE INSTALLED FIRST



### R-Boost™ OPEN RAKE DETAIL

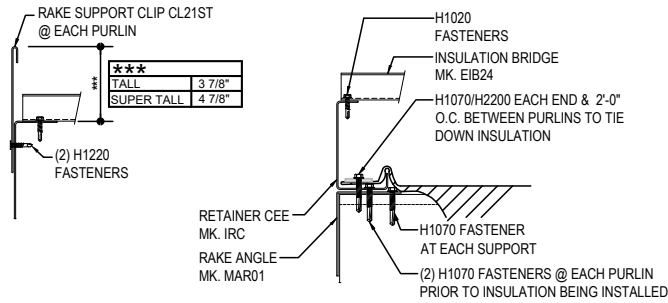
STARTING RAKE DETAIL, OPEN FOR WALL w/CONSTRUCTION BY OTHERS

**FE2050**

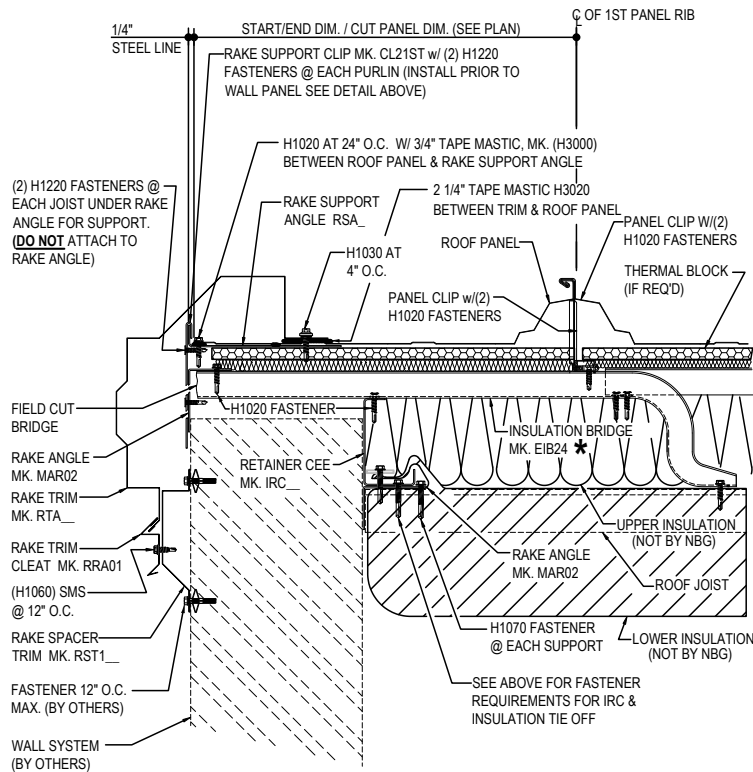
FE2055 - STARTING RAKE DETAIL w/ ROOF JOIST & WALL SYSTEM BY OTHERS

[Download the DWG file by clicking here.](#)

**ERECTOR NOTE: \***  
STARTING RAKE CONDITION IS SHOWN. BRIDGE PREPERATION WILL VARY BETWEEN THE STARTING AND ENDING RAKES, SEE BRIDGE INSTALLATION DETAILS FOR SPECIFIC BRIDGE REQUIREMENTS.



**ALT. CL21ST SUPPORT CLIP INSTALLATION DETAIL**  
USED WHEN WALL PANELS ARE INSTALLED FIRST



**R-Boost™ OPEN WALL RAKE DETAIL**

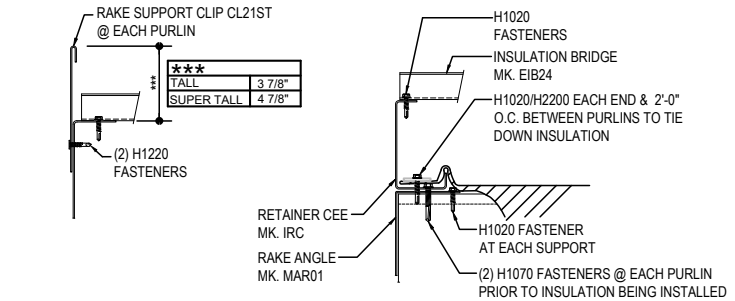
STARTING RAKE DETAIL w/ JOIST AND WALL OPEN FOR WALL SYSTEM BY OTHERS

**FE2055**

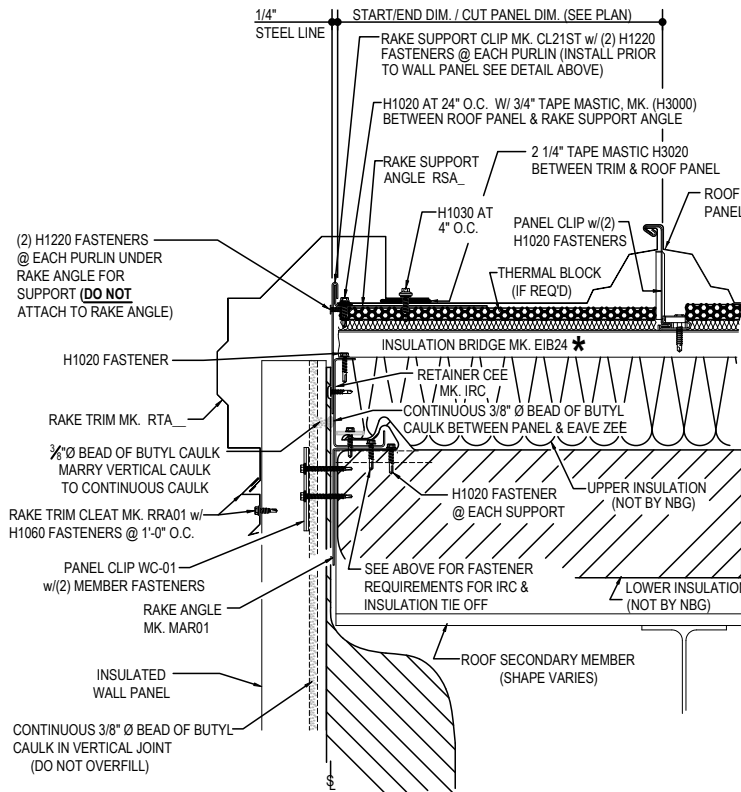
## FE2610 - STARTING RAKE DETAIL w/ INSULATED WALL SYSTEM

[Download the DWG file by clicking here.](#)

**ERECTOR NOTE: \***  
STARTING RAKE CONDION IS SHOWN. BRIDGE PREPERATION WILL VARY BETWEEN THE STARTING AND ENDING RAKES, SEE BRIDGE INSTALLATION DETAILS FOR SPECIFIC BRIDGE REQUIREMENTS.



### ALT. CL21ST SUPPORT CLIP INSTALLATION DETAIL USED WHEN WALL PANELS ARE INSTALLED FIRST



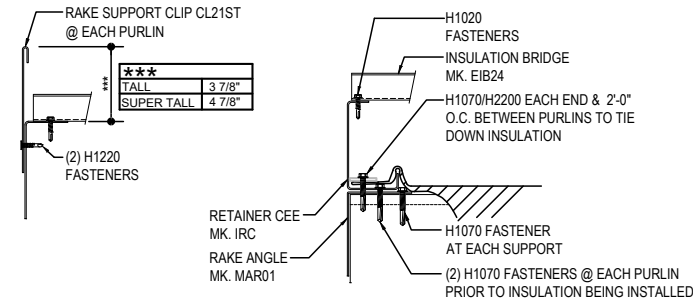
**R-Boost™ RAKE DETAIL**  
RAKE DETAIL w/ INSULATED WALL PANELS

**FE2610**

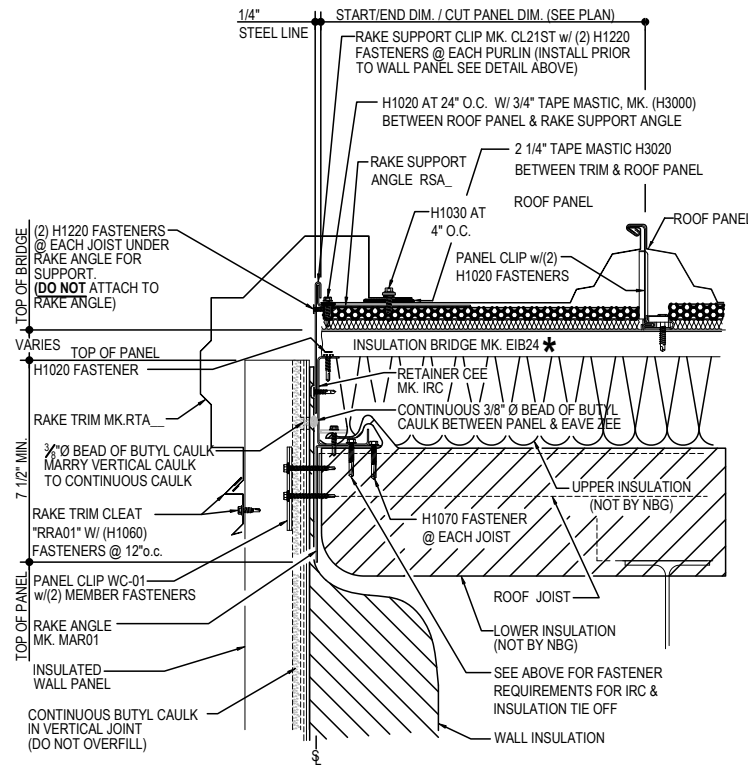
## FE2615 - RAKE DETAIL w/ROOF JOIST & INSULATED WALL SYSTEM

[Download the DWG file by clicking here.](#)

**ERECTOR NOTE: \***  
STARTING RAKE CONDITON IS SHOWN. BRIDGE PREPERATION WILL VARY BETWEEN THE STARTING AND ENDING RAKES, SEE BRIDGE INSTALLATION DETAILS FOR SPECIFIC BRIDGE REQUIREMENTS.



**ALT. CL21ST SUPPORT CLIP INSTALLATION DETAIL**  
USED WHEN WALL PANELS ARE INSTALLED FIRST



### R-Boost™ RAKE DETAIL

RAKE DETAIL w/ JOIST & INSULATED WALL PANEL

FE2615