

PARAPET GUTTER

FK2050 - LOW EAVE PARAPET GUTTER

FK2050 - LOW EAVE PARAPET GUTTER

[Download the DWG file by clicking here.](#)

PARAPET GUTTER INSTALLATION

ERECTOR NOTE

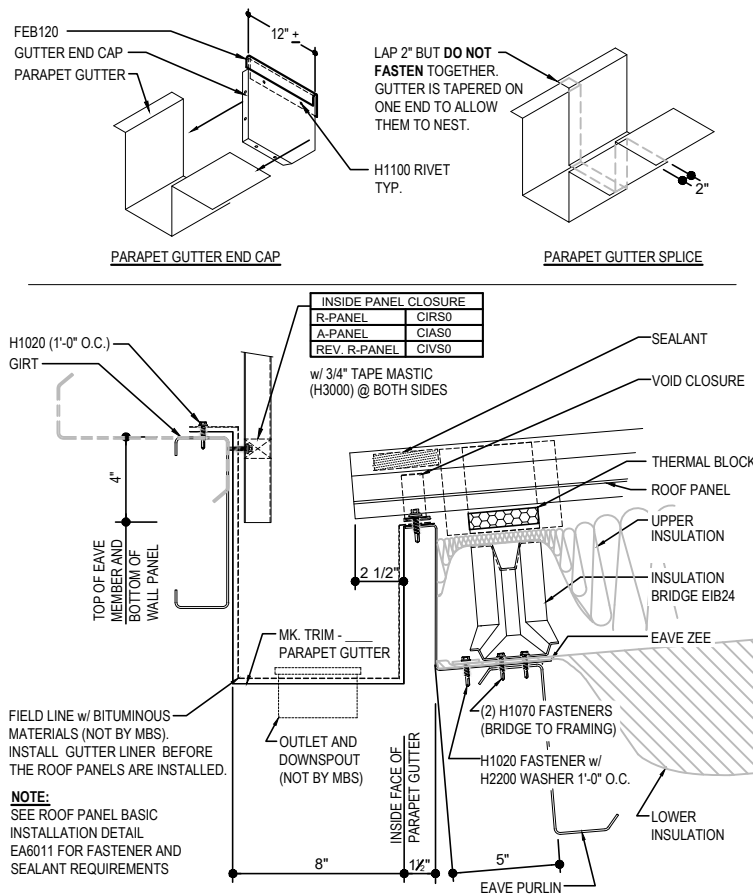
PARAPET GUTTERS ARE DESIGNED TO FUNCTION AS FREE-FLOWING GUTTER SYSTEMS. THEY MUST BE DESIGNED WITH ADEQUATE DRAINAGE AND KEPT FREE OF DEBRIS AND OTHER MATERIALS THAT MAY RESTRICT WATER FLOW. IT IS RECOMMENDED TO USE HEAT TAPE TO REDUCE THE LIKELIHOOD OF ICE AND SNOW BUILD UP IN THE GUTTER.

RUBBER LINER FOR PARAPET GUTTERS IS NOT SUPPLIED BY MBS. INSTALL BEFORE THE ROOF PANELS AND BACKER PANELS ARE INSTALLED.

PARAPET GUTTER SPLICE AND ENDCAP PREPARATION

ATTACH THE PARAPET GUTTER END CAP TO THE PARAPET GUTTER USING (2) H1100 RIVETS IN EACH TAB. USING **GPC L OR R** PAY CLOSE ATTENTION TO THE DETAIL AND THE ORIENTATION OF THE PARAPET END CAP. THE TABS ON THE CAP SHOULD BE AT THE BOTTOM AND BACK OF GUTTER AS SHOWN BELOW. IF PREFERRED, INSTALL ENDCAPS ON GROUND BEFORE SETTING THE PARAPET GUTTER IN PLACE.

ONCE ENDCAP IS INSTALLED, SLIDE A 12"± PIECE OF FEB120 ALONG THE TOP OF THE ENDCAP. ATTACH WITH (2) H1100 RIVETS. THIS WILL ACT AS A BACKER FOR PANEL ATTACHMENT.



R-Boost™ PARAPET GUTTER DETAIL
R-BOOST LOW EAVE DETAIL w/ PARAPET GUTTER

FK2050

Detailer Notes:

- 1) WALL PANEL CLOSURES ARE ALWAYS PROVIDED AS A STANDARD.
- 2) TRIM - ____ PARAPET GUTTER TO MATCH GPU120 WITH 95 DEGREE LEG TO BE 2" LONG.