

**EAVE & RAKE EXTENSIONS**

FO2010 - LOW EAVE EXTENSION

FO2011 - LOW EAVE EXTENSION - IMP WALL

FO2310 - RAKE EXTENSION

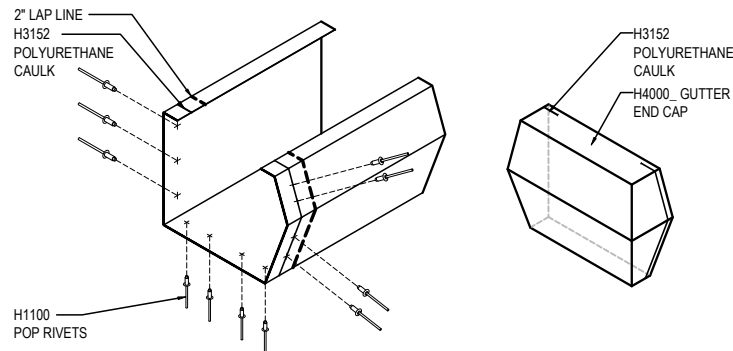
FO2311 - RAKE EXTENSION - IMP WALL

## FO2010 - LOW EAVE EXTENSION

[Download the DWG file by clicking here.](#)

### GUTTER LAP & END CAP

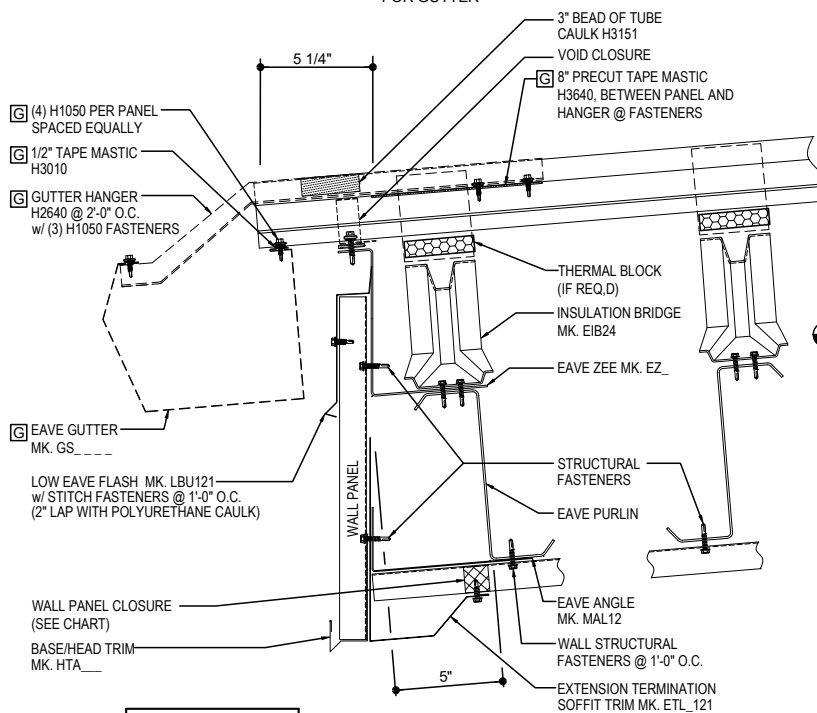
APPLY BEAD OF POLYURETHANE CAULK 1" FROM END OF TRIM AND LAP SECTIONS 2" AND FASTEN AS SHOWN. TO TERMINATE THE GUTTER APPLY POLYURETHANE CAULK TO THREE SIDES OF END CAP AND TOP RETURN AREA AS SHOWN AND INSERT INTO THE GUTTER LEAVING 1/2" EXPOSED. ATTACH WITH RIVETS SAME AS END LAP.



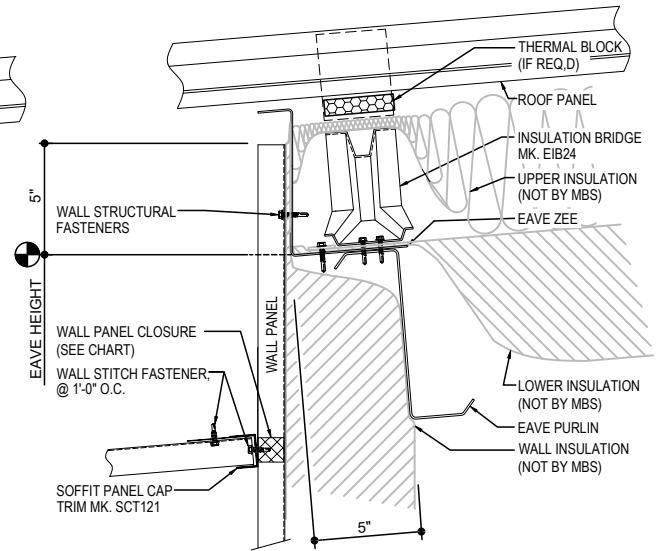
### GUTTER SHOWN IF REQ'D

ⓐ REQ'D ONLY FOR GUTTER

**NOTE 1: PANEL RIB MUST BE SEAMED PRIOR TO INSTALLING GUTTER BRACKET!**



FASTENER KEY	
STRUCTURAL =	H1040
STITCH =	H1060



OUTSIDE PANEL CLOSURE	
R-PANEL	CORSO
A-PANEL	COASO
REV. R-PANEL	COVSO

**R-Boost™ LOW EAVE EXTENSION DETAIL**  
LOW EAVE EXTENSION WITH OR WITHOUT GUTTER

**FO2010**

### Detailer Notes:

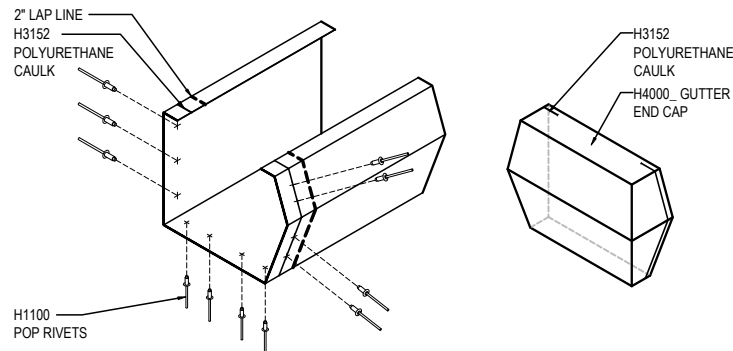
- 1) N/A

FO2011 - LOW EAVE EXTENSION - IMP WALL

[Download the DWG file by clicking here.](#)

**GUTTER LAP & END CAP**

APPLY BEAD OF POLYURETHANE CAULK 1" FROM END OF TRIM AND LAP SECTIONS 2" AND FASTEN AS SHOWN. TO TERMINATE THE GUTTER APPLY POLYURETHANE CAULK TO THREE SIDES OF END CAP AND TOP RETURN AREA AS SHOWN AND INSERT INTO THE GUTTER LEAVING 1/2" EXPOSED. ATTACH WITH RIVETS SAME AS END LAP.

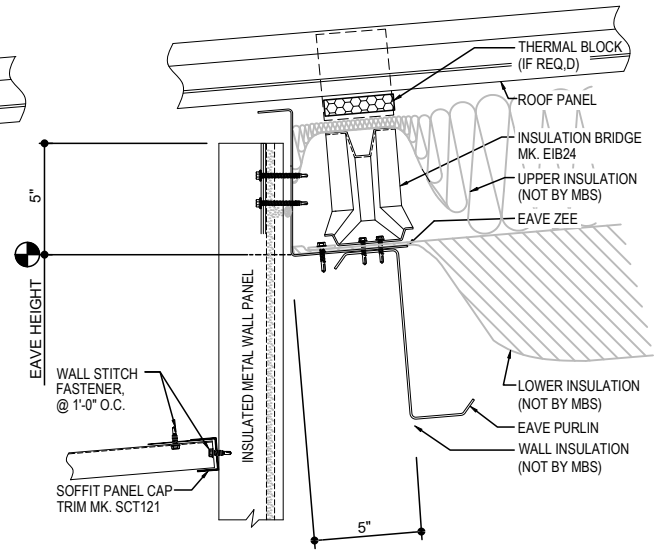
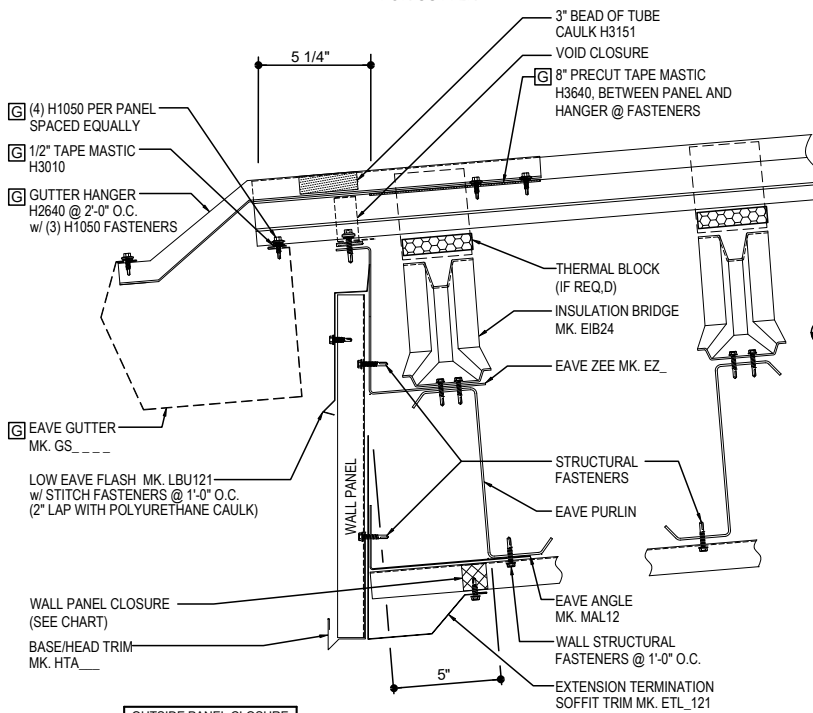


**GUTTER SHOWN IF REQ'D**

ⓐ REQ'D ONLY FOR GUTTER

**NOTE 1: PANEL RIB MUST BE SEAMED PRIOR TO INSTALLING GUTTER BRACKET!**

<b>FASTENER KEY</b>	
STRUCTURAL =	H1040
STITCH =	H1060



OUTSIDE PANEL CLOSURE	
R-PANEL	CORSO
A-PANEL	COASO
REV. R-PANEL	COVSO

**R-Boost™ LOW EAVE EXTENSION DETAIL**  
LOW EAVE EXTENSION WITH OR WITHOUT GUTTER

**FO2011**

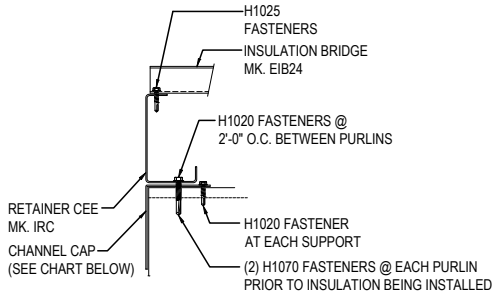
**Detailer Notes:**

- 1) N/A

## FO2310 - RAKE EXTENSION

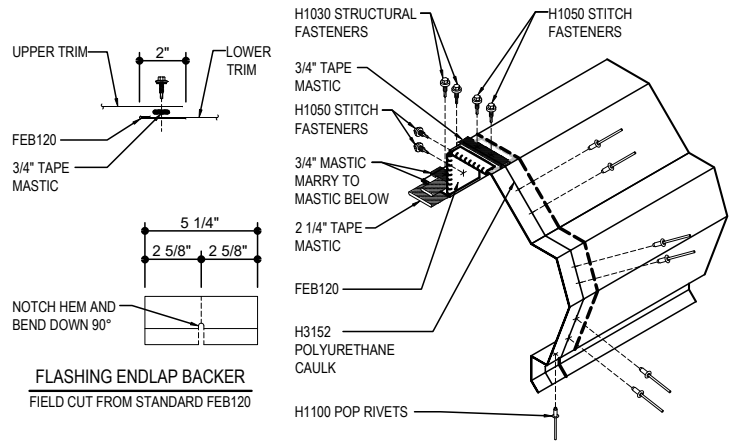
[Download the DWG file by clicking here.](#)

**ERECTOR NOTE: \***  
STARTING RAKE CONDITION IS SHOWN. BRIDGE PREPARATION WILL VARY BETWEEN THE STARTING AND ENDING RAKES, SEE BRIDGE INSTALLATION DETAILS FOR SPECIFIC BRIDGE REQUIREMENTS.



### RAKE LAP & FLASHING BACKER

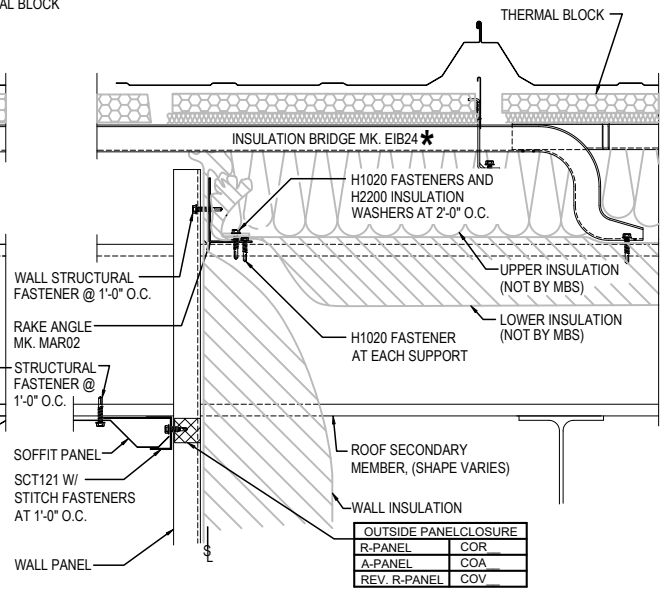
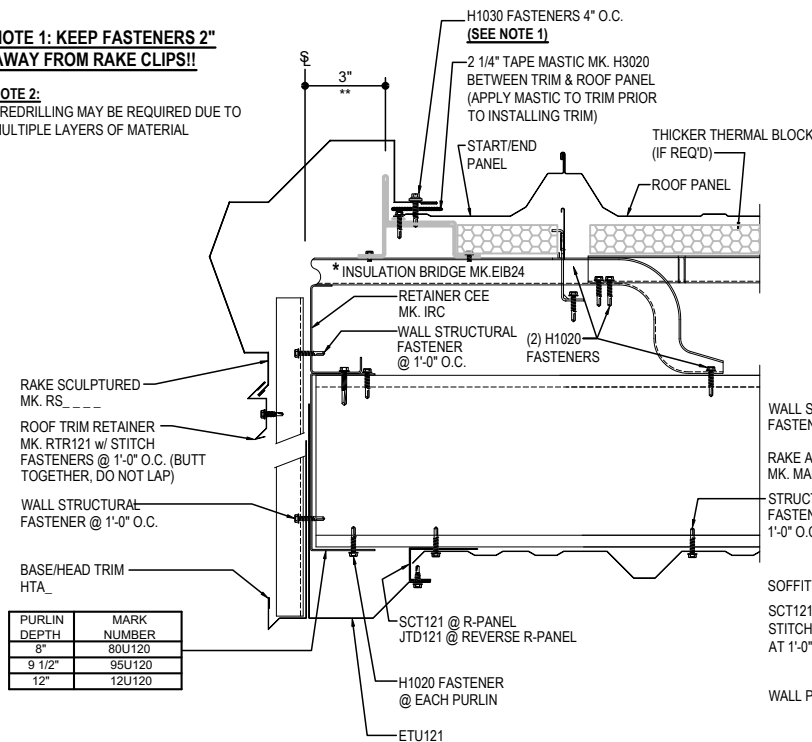
SLIDE FIELD CUT SECTION OF FLASHING ENLAP BACKER ONTO THE LOWER TRIM PIECE AS SHOWN BELOW. PLACE TAPE MASTIC NEXT TO HEM OF THE BACKER (NOT ON TOP OF HEM). APPLY CONTINUOUS BEAD OF CAULK 1" FROM END OF TRIM DOWN PROFILE OF TRIM. FASTEN LAP WITH STITCH FASTENERS AND POP RIVETS AS SHOWN. ROOF STRUCTURAL FASTENERS SHOULD BE USED TO FASTEN THROUGH PANEL FLAT INTO RAKE ANGLE.



**NOTE 1: KEEP FASTENERS 2" AWAY FROM RAKE CLIPS!!**

**NOTE 2:**  
PREDRILLING MAY BE REQUIRED DUE TO MULTIPLE LAYERS OF MATERIAL

**FASTENER KEY**  
STRUCTURAL = H1040  
STITCH = H1060



PURLIN DEPTH	MARK NUMBER
8"	80U120
9 1/2"	95U120
12"	12U120

OUTSIDE PANEL CLOSURE	
R-PANEL	COR
A-PANEL	COA
REV. R-PANEL	COV

### R-Boost™ RAKE EXTENSION DETAIL

RAKE EXTENSION DETAIL w/ STANDARD WALL PANELS AND SOFFIT

**FO2310**

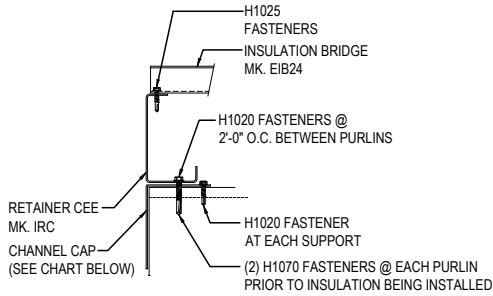
#### Detailer Notes:

- 1) N/A

## FO2311 - RAKE EXTENSION - IMP WALL

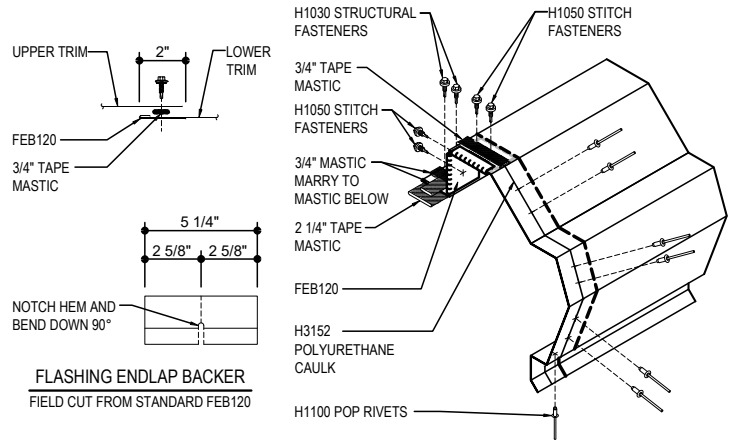
[Download the DWG file by clicking here.](#)

**ERECTOR NOTE: \***  
STARTING RAKE CONDITION IS SHOWN. BRIDGE PREPARATION WILL VARY BETWEEN THE STARTING AND ENDING RAKES, SEE BRIDGE INSTALLATION DETAILS FOR SPECIFIC BRIDGE REQUIREMENTS.



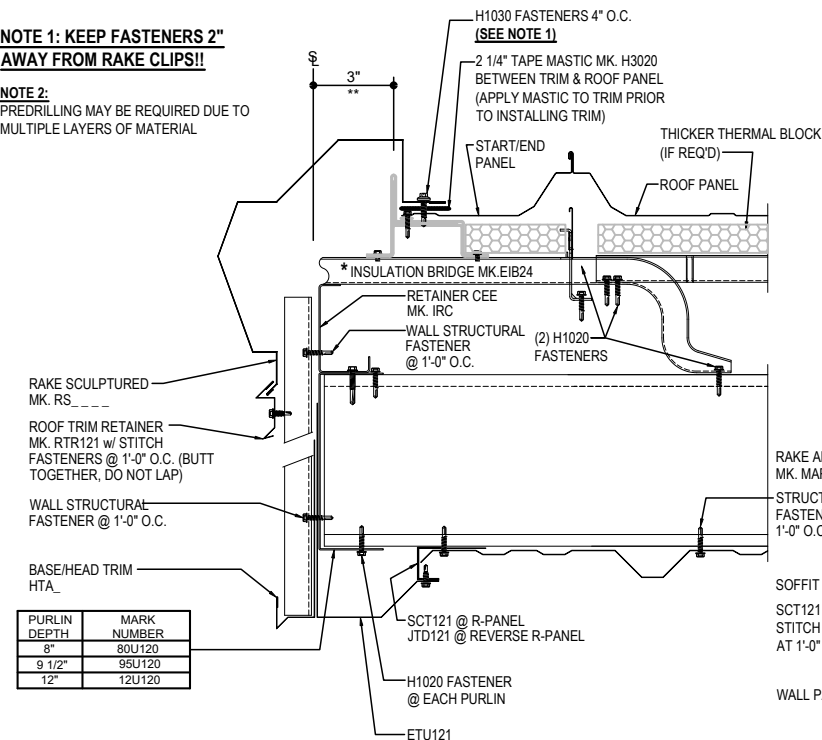
### RAKE LAP & FLASHING BACKER

SLIDE FIELD CUT SECTION OF FLASHING ENLAP BACKER ONTO THE LOWER TRIM PIECE AS SHOWN BELOW. PLACE TAPE MASTIC NEXT TO HEM OF THE BACKER (NOT ON TOP OF HEM). APPLY CONTINUOUS BEAD OF CAULK 1" FROM END OF TRIM DOWN PROFILE OF TRIM. FASTEN LAP WITH STITCH FASTENERS AND POP RIVETS AS SHOWN. ROOF STRUCTURAL FASTENERS SHOULD BE USED TO FASTEN THROUGH PANEL FLAT INTO RAKE ANGLE.

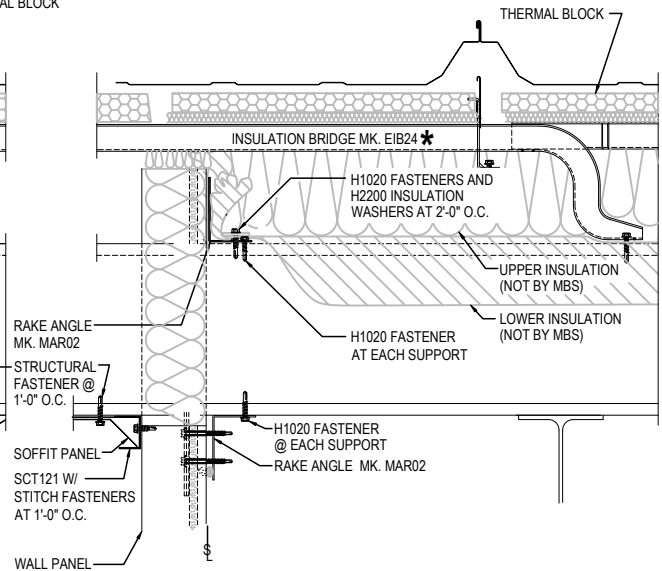


**NOTE 1: KEEP FASTENERS 2" AWAY FROM RAKE CLIPS!!**

**NOTE 2:**  
PREDRILLING MAY BE REQUIRED DUE TO MULTIPLE LAYERS OF MATERIAL



**FASTENER KEY**  
STRUCTURAL = H1040  
STITCH = H1060



### R-Boost™ RAKE EXTENSION DETAIL

RAKE EXTENSION DETAIL w/ INSULATED WALL PANELS AND SOFFIT

**FO2311**

**Detailer Notes:**

1) N/A