

## EAVE & RAKE EXTENSIONS

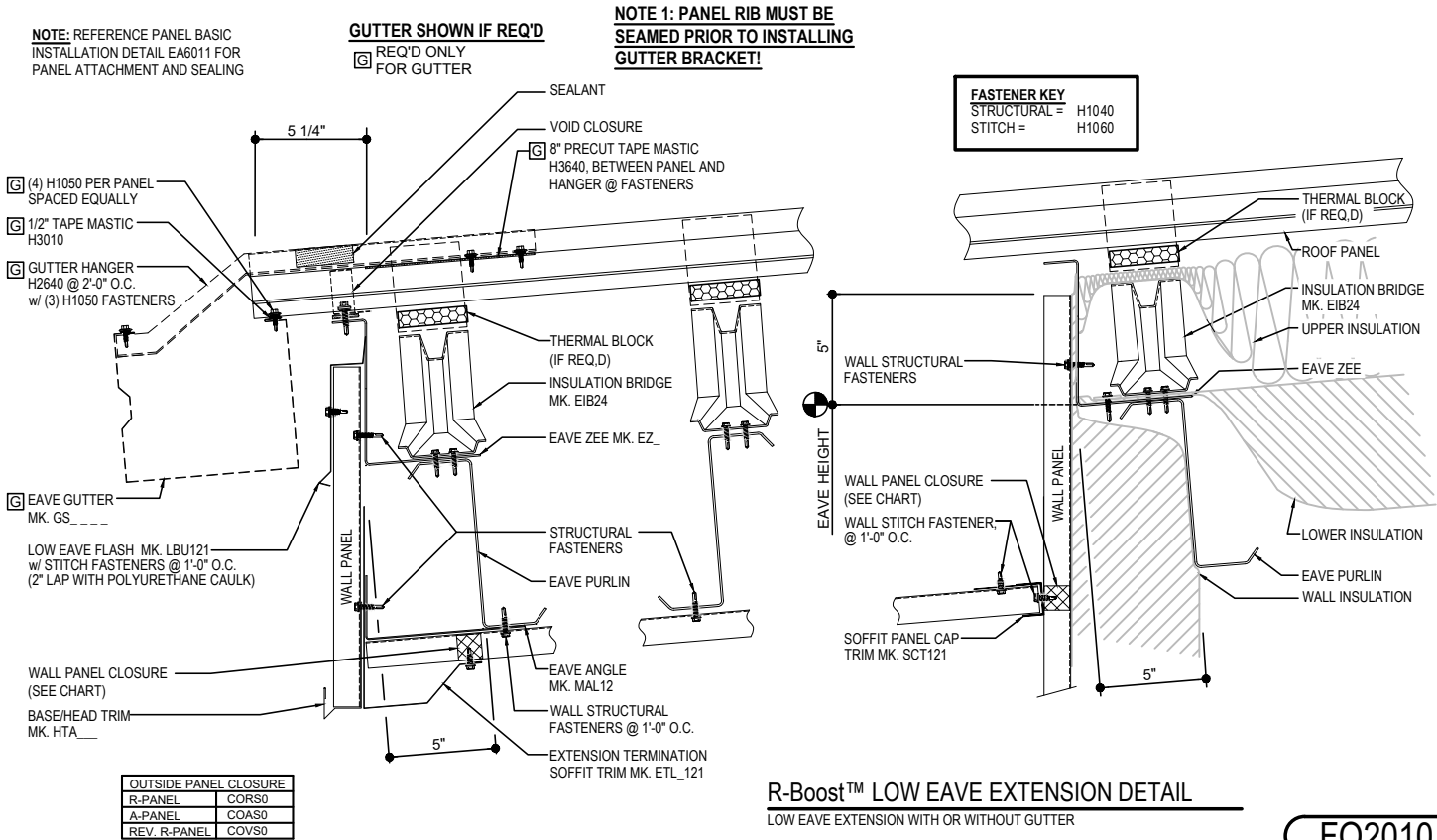
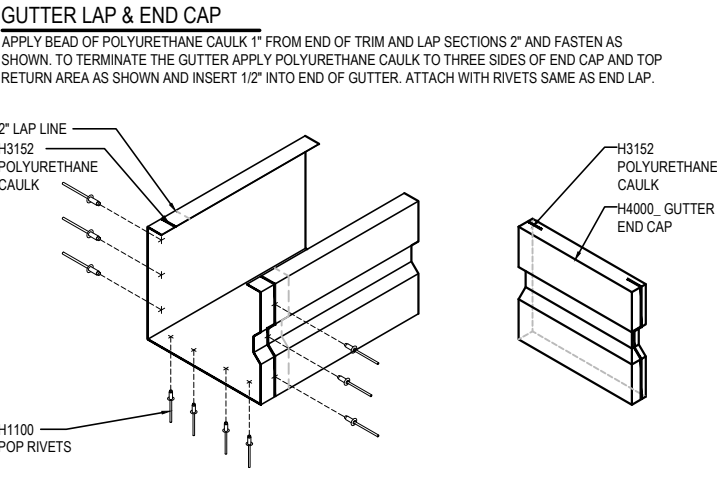
FO2010 - LOW EAVE EXTENSION

FO2011 - LOW EAVE EXTENSION - IMP WALL

FO2310 - RAKE EXTENSION

FO2311 - RAKE EXTENSION - IMP WALL

FO2010 - LOW EAVE EXTENSION  
[Download the DWG file by clicking here.](#)



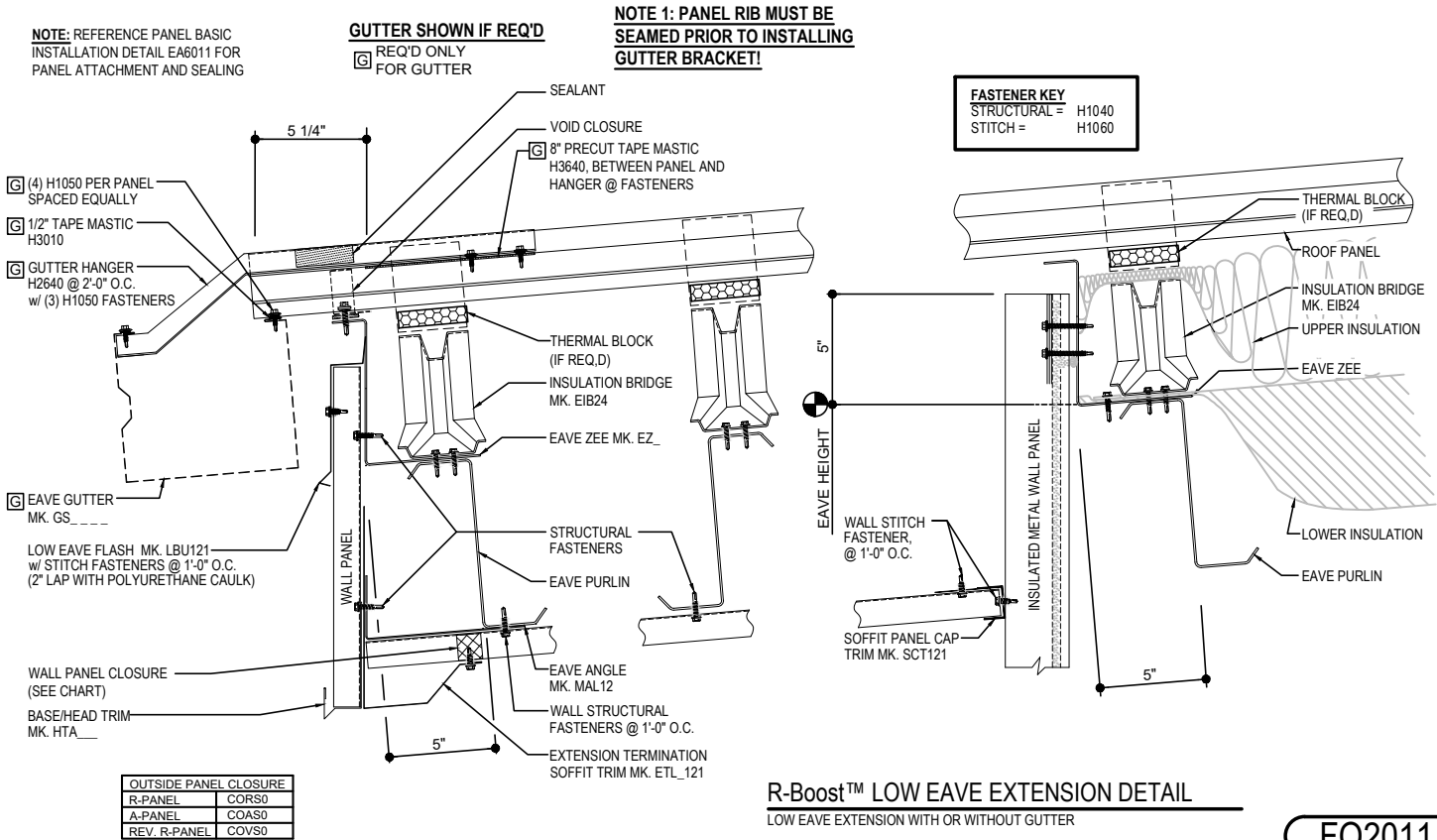
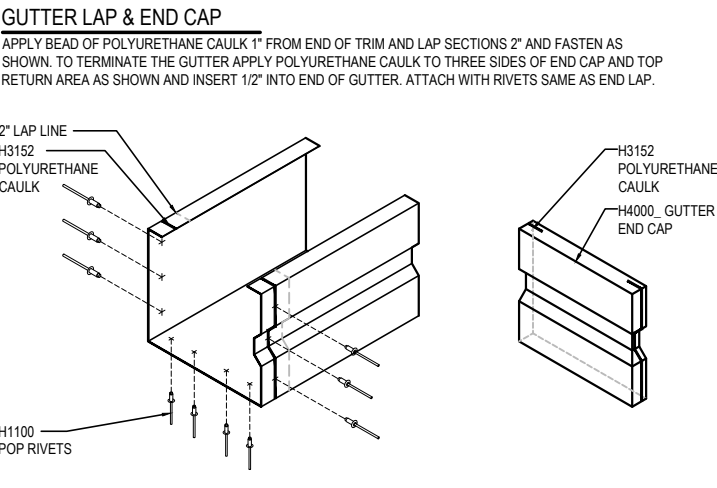
R-Boost™ LOW EAVE EXTENSION DETAIL  
LOW EAVE EXTENSION WITH OR WITHOUT GUTTER

FO2010

**Detailer Notes:**  
1) N/A

FO2011 - LOW EAVE EXTENSION - IMP WALL

[Download the DWG file by clicking here.](#)



FO2011

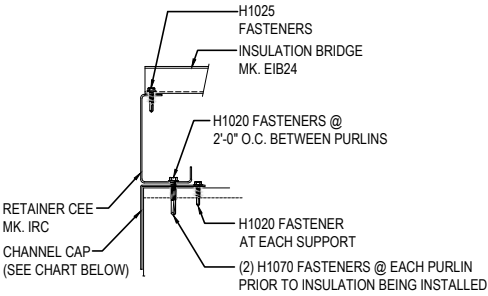
Detailer Notes:

1) N/A

FO2310 - RAKE EXTENSION

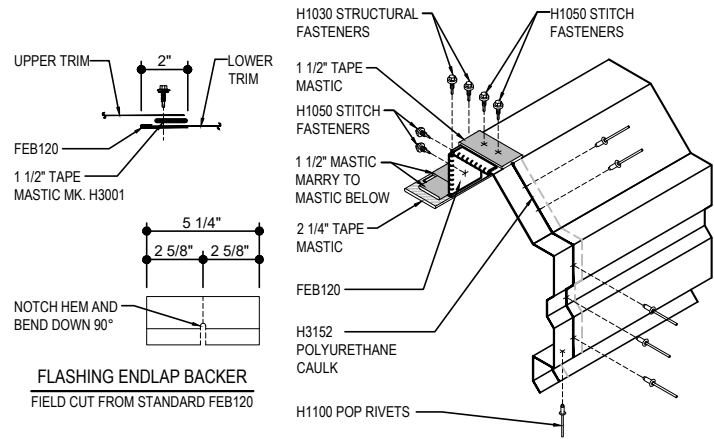
[Download the DWG file by clicking here.](#)

**ERECTOR NOTE: \***  
STARTING RAKE CONDION IS SHOWN. BRIDGE PREPERATION WILL VARY BETWEEN THE STARTING AND ENDING RAKES, SEE BRIDGE INSTALLATION DETAILS FOR SPECIFIC BRIDGE REQUIREMENTS.



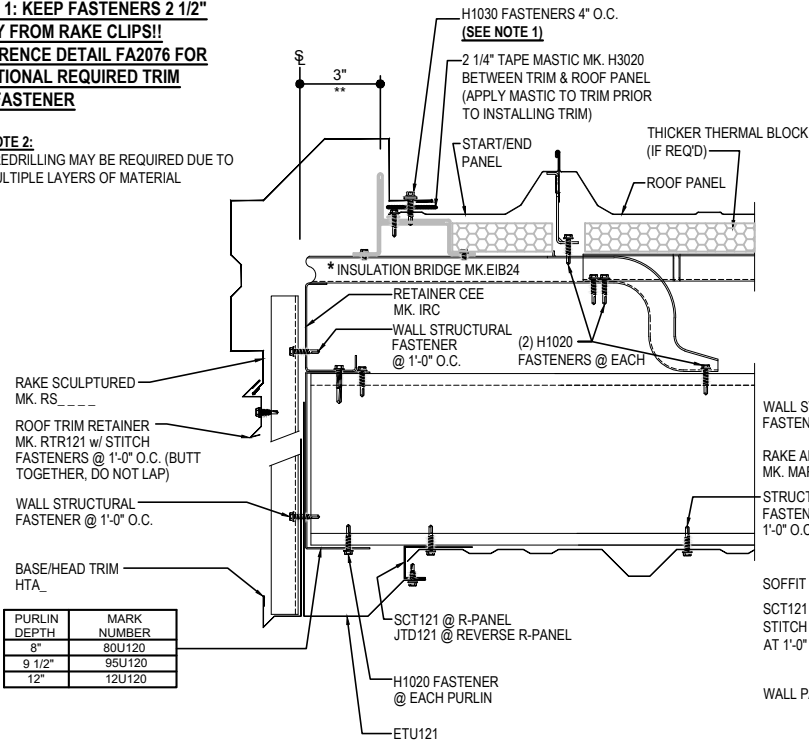
RAKE LAP & FLASHING BACKER

SLIDE FIELD CUT SECTION OF FLASHING ENDLAP BACKER ONTO THE LOWER TRIM PIECE AS SHOWN BELOW. PLACE TAPE MASTIC NEXT TO HEM OF THE BACKER (NOT ON TOP OF HEM). APPLY CONTINUOUS BEAD OF CAULK 1" FROM END OF TRIM DOWN PROFILE OF TRIM. FASTEN LAP WITH STITCH FASTENERS AND POP RIVETS AS SHOWN. ROOF STRUCTURAL FASTENERS SHOULD BE USED TO FASTEN THROUGH PANEL FLAT INTO RAKE ANGLE.

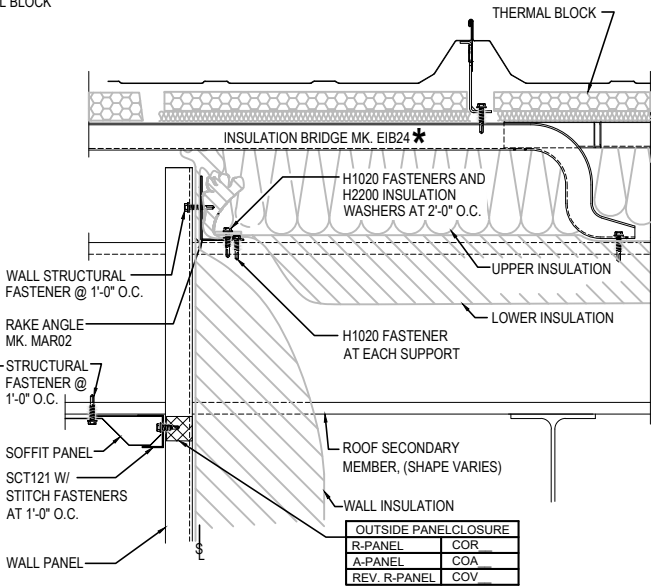


**NOTE 1: KEEP FASTENERS 2 1/2" AWAY FROM RAKE CLIPS!!**  
**REFERENCE DETAIL FA2076 FOR ADDITIONAL REQUIRED TRIM LAP FASTENER**

**NOTE 2:**  
PREDRILLING MAY BE REQUIRED DUE TO MULTIPLE LAYERS OF MATERIAL



**FASTENER KEY**  
STRUCTURAL = H1040  
STITCH = H1060



R-Boost™ RAKE EXTENSION DETAIL

RAKE EXTENSION DETAIL w/ STANDARD WALL PANELS AND SOFFIT

FO2310

Detailer Notes:

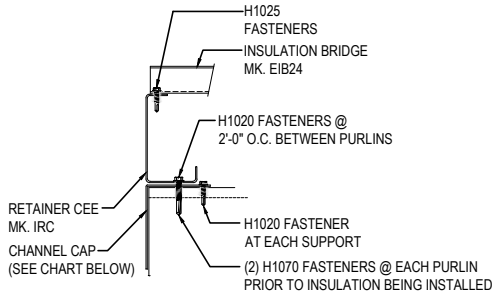
1) N/A

## FO2311 - RAKE EXTENSION - IMP WALL

[Download the DWG file by clicking here.](#)

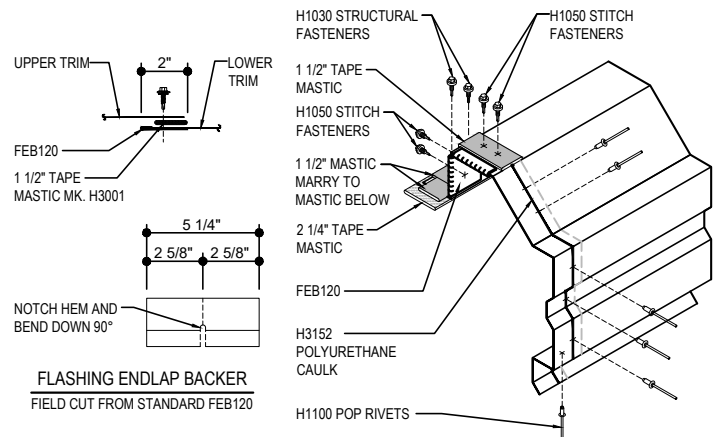
### ERECTOR NOTE: \*

STARTING RAKE CONDION IS SHOWN. BRIDGE PREPERATION WILL VARY BETWEEN THE STARTING AND ENDING RAKES, SEE BRIDGE INSTALLATION DETAILS FOR SPECIFIC BRIDGE REQUIREMENTS.



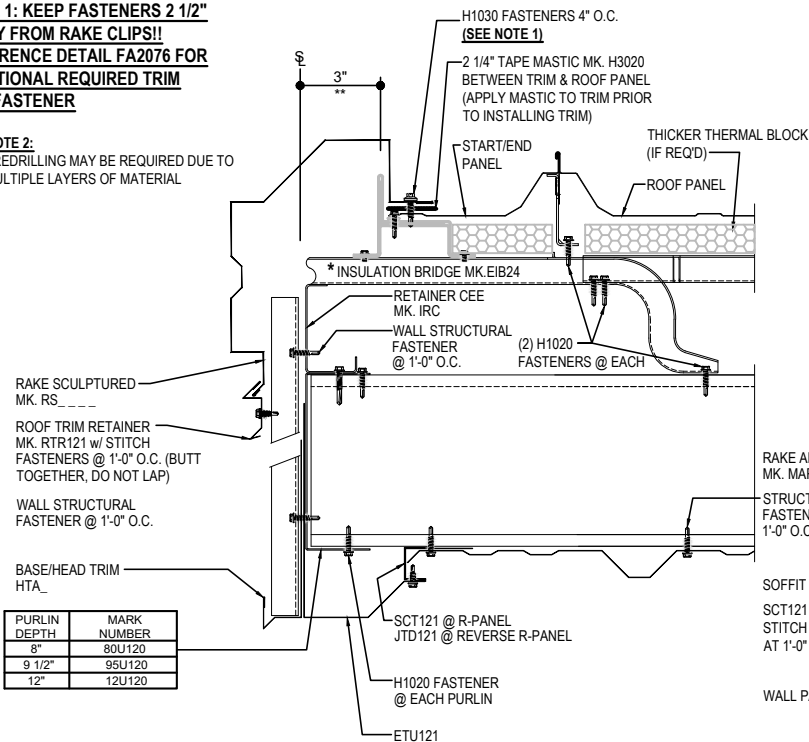
### RAKE LAP & FLASHING BACKER

SLIDE FIELD CUT SECTION OF FLASHING ENLAP BACKER ONTO THE LOWER TRIM PIECE AS SHOWN BELOW. PLACE TAPE MASTIC NEXT TO HEM OF THE BACKER (NOT ON TOP OF HEM). APPLY CONTINUOUS BEAD OF CAULK 1" FROM END OF TRIM DOWN PROFILE OF TRIM. FASTEN LAP WITH STITCH FASTENERS AND POP RIVETS AS SHOWN. ROOF STRUCTURAL FASTENERS SHOULD BE USED TO FASTEN THROUGH PANEL FLAT INTO RAKE ANGLE.

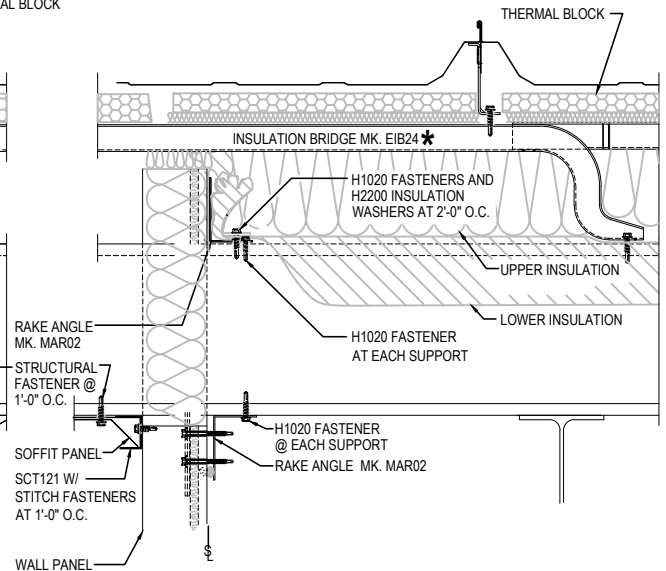


**NOTE 1: KEEP FASTENERS 2 1/2" AWAY FROM RAKE CLIPS!!**  
**REFERENCE DETAIL FA2076 FOR ADDITIONAL REQUIRED TRIM LAP FASTENER**

**NOTE 2:**  
PREDRILLING MAY BE REQUIRED DUE TO MULTIPLE LAYERS OF MATERIAL



**FASTENER KEY**  
STRUCTURAL = H1040  
STITCH = H1060



### R-Boost™ RAKE EXTENSION DETAIL

RAKE EXTENSION DETAIL w/ INSULATED WALL PANELS AND SOFFIT

FO2311

### Detailer Notes:

1) N/A