

EAVE & RAKE EXTENSIONS

NON-CONCEALED EAVE

FO2010 - NBS - LOW EAVE EXTENSION

FO2011 - NBS - LOW EAVE EXTENSION - IMP WALL

CONCEALED EAVE

FO2012 - NBS - LOW EAVE EXTENSION

FO2013 - NBS - LOW EAVE EXTENSION - IMP WALL

RAKE EXTENSION

FO2312 - NBS - RAKE EXTENSION

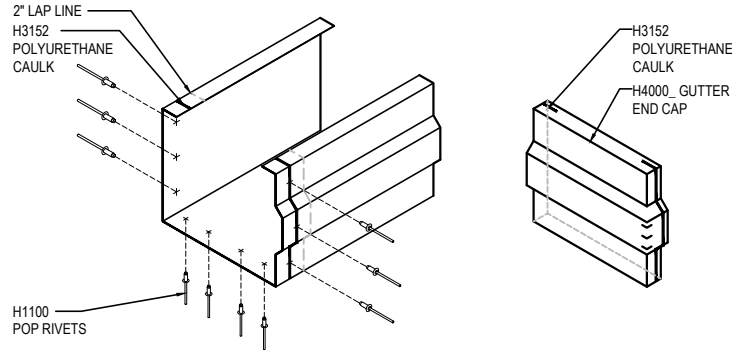
FO2313 - NBS - RAKE EXTENSION - IMP WALL

FO2010 - LOW EAVE EXTENSION

[Download the DWG file by clicking here.](#)

GUTTER LAP & END CAP

APPLY BEAD OF POLYURETHANE CAULK 1" FROM END OF TRIM AND LAP SECTIONS 2" AND FASTEN AS SHOWN. TO TERMINATE THE GUTTER APPLY POLYURETHANE CAULK TO THREE SIDES OF END CAP AND TOP RETURN AREA AS SHOWN AND INSERT 1/2" INTO END OF GUTTER. ATTACH WITH RIVETS SAME AS END LAP.

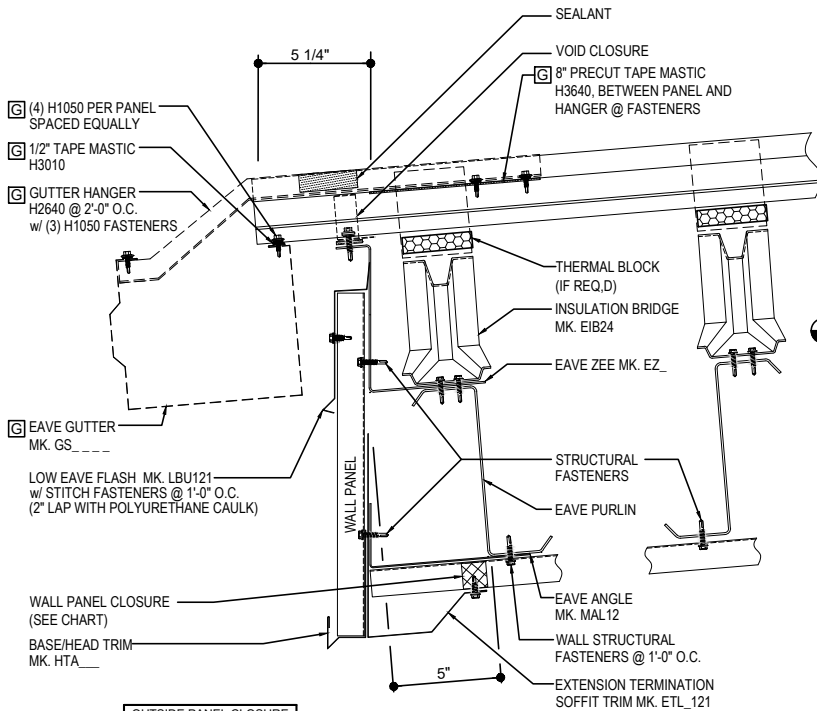


NOTE: REFERENCE PANEL BASIC INSTALLATION DETAIL EA6011 FOR PANEL ATTACHMENT AND SEALING

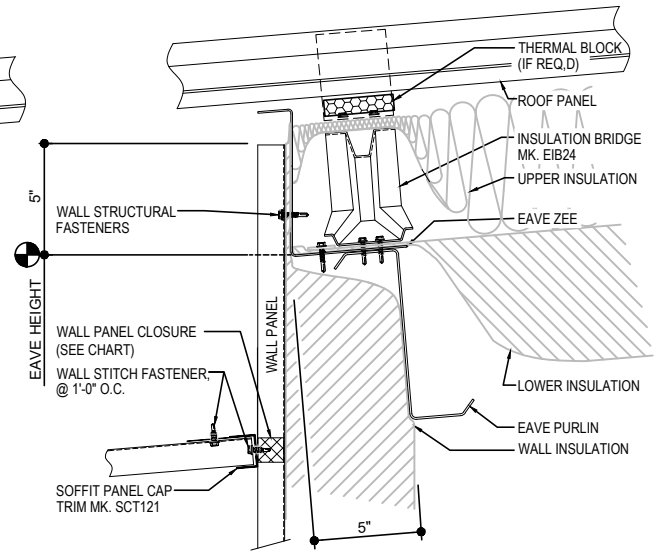
GUTTER SHOWN IF REQ'D

REQ'D ONLY FOR GUTTER

NOTE 1: PANEL RIB MUST BE HAND CRIMPED PRIOR TO INSTALLING GUTTER BRACKET!



FASTENER KEY	
STRUCTURAL =	H1040
STITCH =	H1060



OUTSIDE PANEL CLOSURE	
R-PANEL	CORSO
A-PANEL	COASO
REV. R-PANEL	COVSO

R-Boost™ LOW EAVE EXTENSION DETAIL
LOW EAVE EXTENSION WITH OR WITHOUT GUTTER
SEE WALL SHEETING ERECTION NOTES FOR WALL PANEL FASTENER LOCATIONS

FO2010

Detailer Notes:

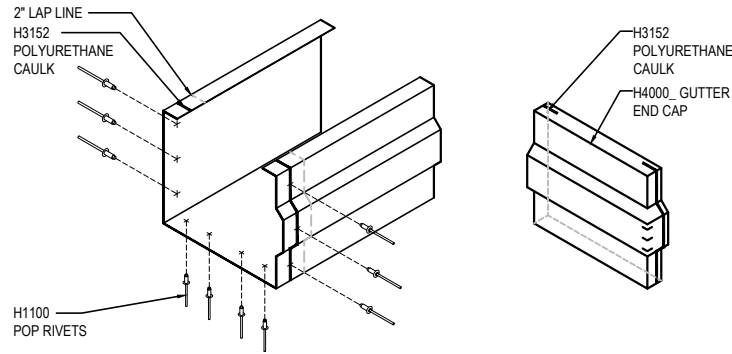
- 1) N/A

FO2011 - LOW EAVE EXTENSION - IMP WALL

[Download the DWG file by clicking here.](#)

GUTTER LAP & END CAP

APPLY BEAD OF POLYURETHANE CAULK 1" FROM END OF TRIM AND LAP SECTIONS 2" AND FASTEN AS SHOWN. TO TERMINATE THE GUTTER APPLY POLYURETHANE CAULK TO THREE SIDES OF END CAP AND RETURN AREA AS SHOWN AND INSERT 1/2" INTO END OF GUTTER. ATTACH WITH RIVETS SAME AS END LAP.

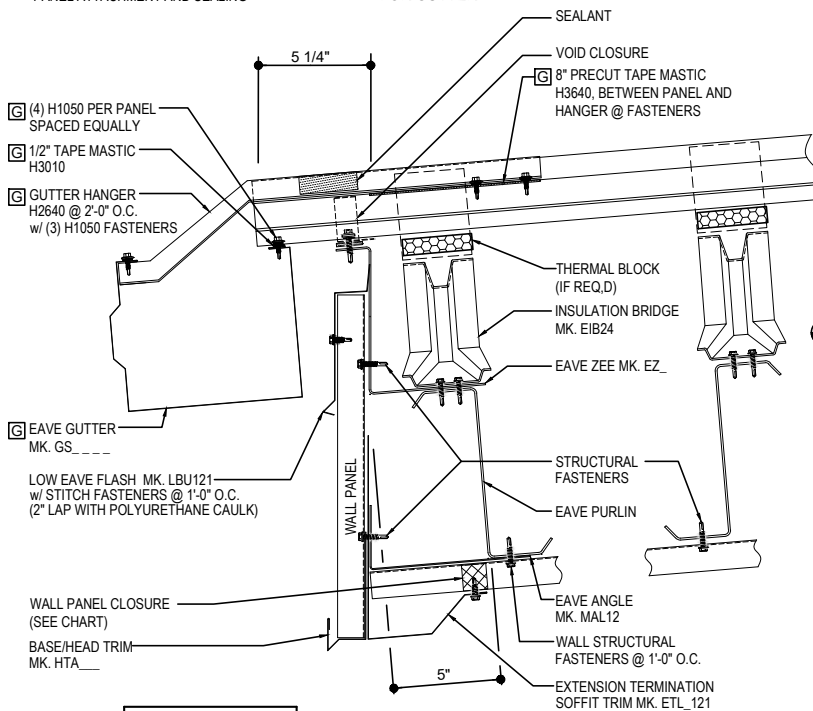


NOTE: REFERENCE PANEL BASIC INSTALLATION DETAIL EA6011 FOR PANEL ATTACHMENT AND SEALING

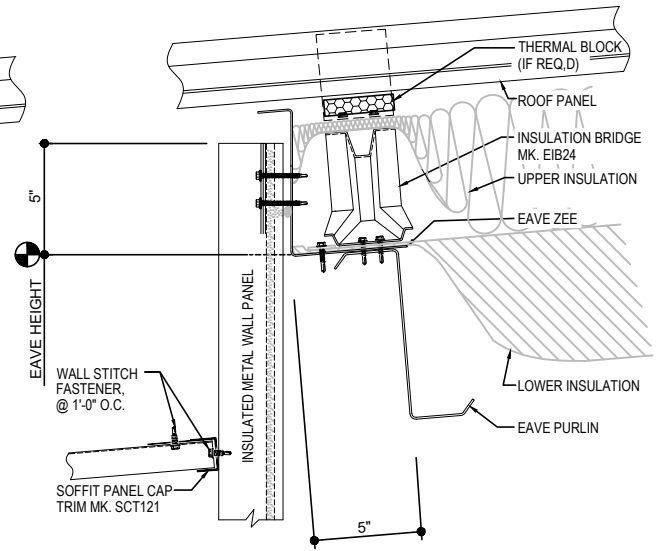
GUTTER SHOWN IF REQ'D

ⓐ REQ'D ONLY FOR GUTTER

NOTE 1: PANEL RIB MUST BE HAND CRIMPED PRIOR TO INSTALLING GUTTER BRACKET!



FASTENER KEY	
STRUCTURAL =	H1040
STITCH =	H1060



OUTSIDE PANEL CLOSURE	
R-PANEL	CORS0
A-PANEL	COAS0
REV. R-PANEL	COVS0

R-Boost™ LOW EAVE EXTENSION DETAIL
LOW EAVE EXTENSION WITH OR WITHOUT GUTTER
SEE WALL SHEETING ERECTION NOTES FOR WALL PANEL FASTENER LOCATIONS

FO2011

Detailer Notes:

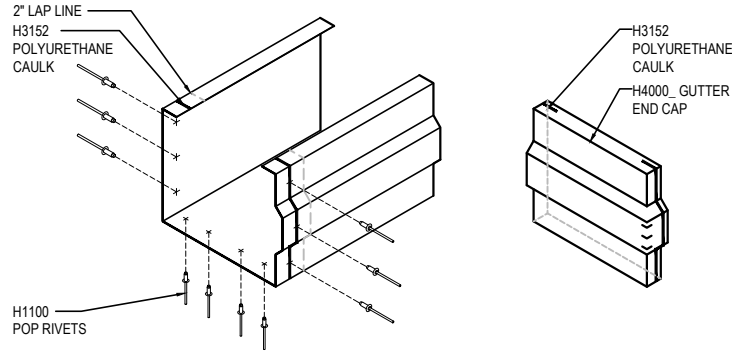
- 1) N/A

FO2012 - LOW EAVE EXTENSION

Download the DWG file by clicking here.

GUTTER LAP & END CAP

APPLY BEAD OF POLYURETHANE CAULK 1" FROM END OF TRIM AND LAP SECTIONS 2" AND FASTEN AS SHOWN. TO TERMINATE THE GUTTER APPLY POLYURETHANE CAULK TO THREE SIDES OF END CAP AND TOP RETURN AREA AS SHOWN AND INSERT 1/2" INTO END OF GUTTER. ATTACH WITH RIVETS SAME AS END LAP.

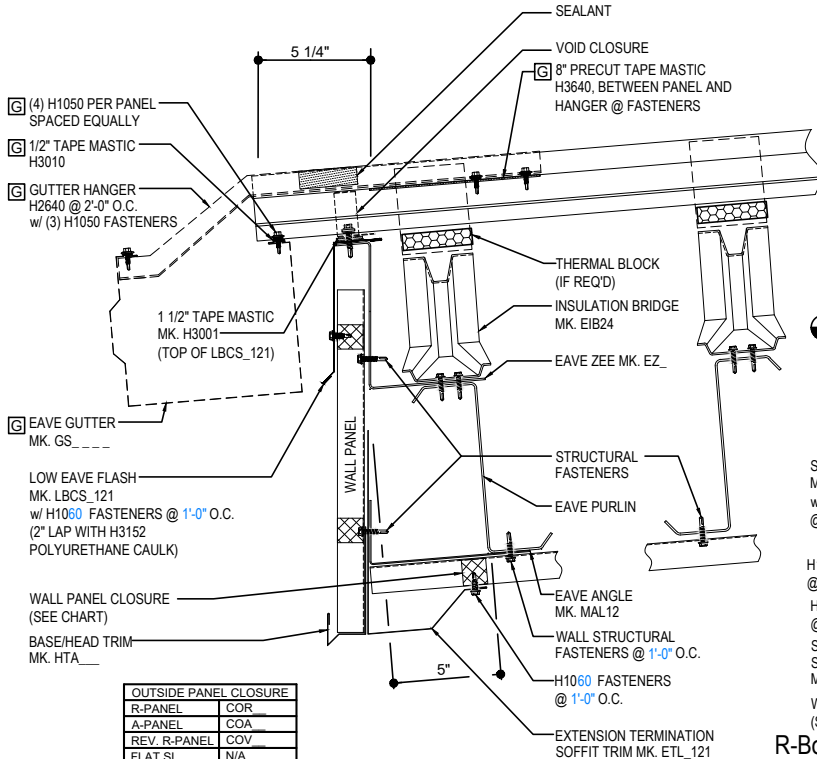


NOTE: REFERENCE PANEL BASIC INSTALLATION DETAIL EA6013 FOR PANEL ATTACHMENT AND SEALING

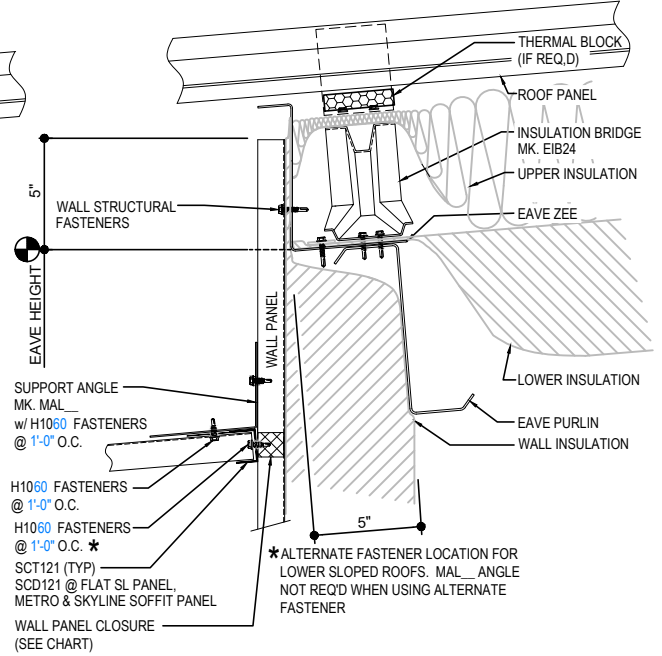
GUTTER SHOWN IF REQ'D

REQ'D ONLY FOR GUTTER

NOTE 1: PANEL RIB MUST BE HAND CRIMPED PRIOR TO INSTALLING GUTTER BRACKET!



FASTENER KEY	
STRUCTURAL =	H1040
STITCH =	H1060



R-Boost™ LOW EAVE EXTENSION DETAIL

LOW EAVE EXTENSION WITH OR WITHOUT GUTTER
SEE WALL SHEETING ERECTION NOTES FOR WALL PANEL FASTENER LOCATIONS

FO2012

Detailer Notes:

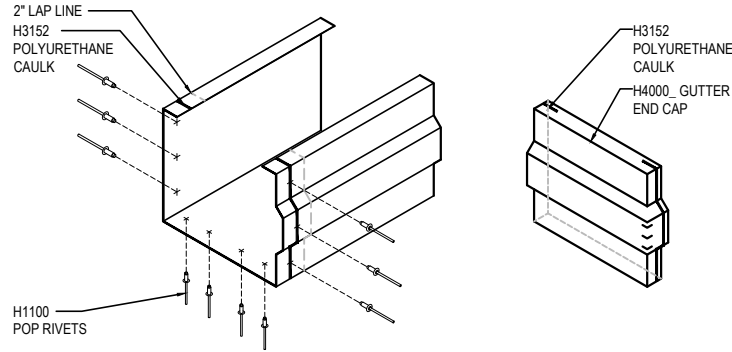
1) N/A

FO2013 - LOW EAVE EXTENSION - IMP WALL

[Download the DWG file by clicking here.](#)

GUTTER LAP & END CAP

APPLY BEAD OF POLYURETHANE CAULK 1" FROM END OF TRIM AND LAP SECTIONS 2" AND FASTEN AS SHOWN. TO TERMINATE THE GUTTER APPLY POLYURETHANE CAULK TO THREE SIDES OF END CAP AND TOP RETURN AREA AS SHOWN AND INSERT 1/2" INTO END OF GUTTER. ATTACH WITH RIVETS SAME AS END LAP.



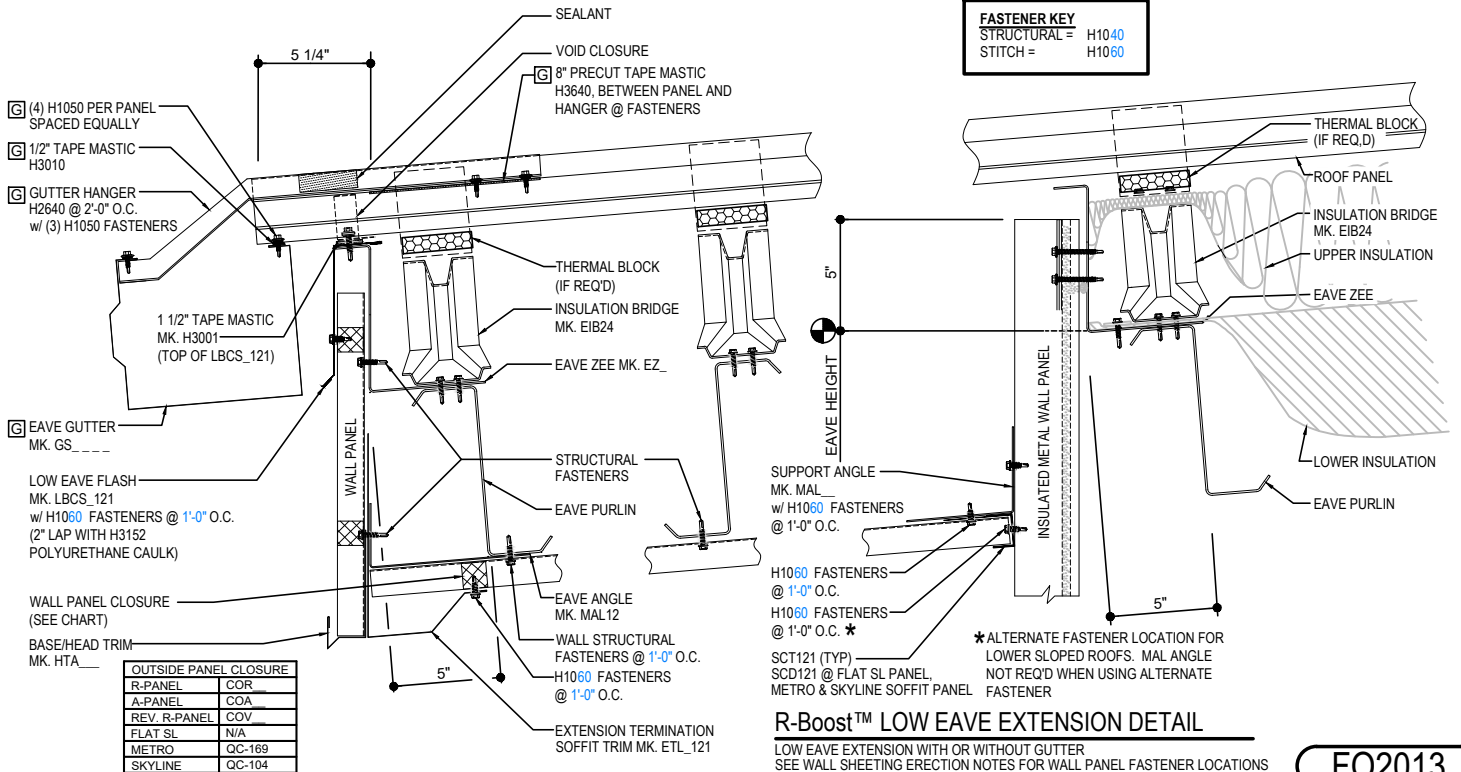
NOTE: REFERENCE PANEL BASIC INSTALLATION DETAIL EA6013 FOR PANEL ATTACHMENT AND SEALING

GUTTER SHOWN IF REQ'D

REQ'D ONLY FOR GUTTER

NOTE 1: PANEL RIB MUST BE HAND CRIMPED PRIOR TO INSTALLING GUTTER BRACKET!

FASTENER KEY	
STRUCTURAL =	H1040
STITCH =	H1060



OUTSIDE PANEL CLOSURE	
R-PANEL	COR
A-PANEL	COA
REV. R-PANEL	COV
FLAT SL	N/A
METRO	QC-169
SKYLINE	QC-104

R-Boost™ LOW EAVE EXTENSION DETAIL
LOW EAVE EXTENSION WITH OR WITHOUT GUTTER
SEE WALL SHEETING ERECTION NOTES FOR WALL PANEL FASTENER LOCATIONS

FO2013

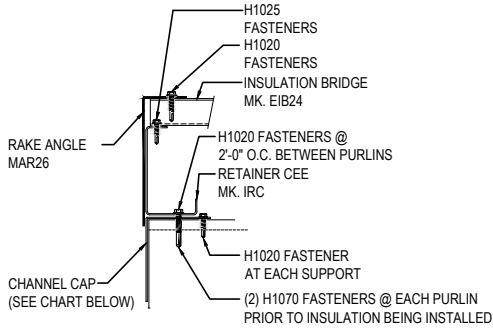
Detailer Notes:

- 1) N/A

FO2312 - RAKE EXTENSION

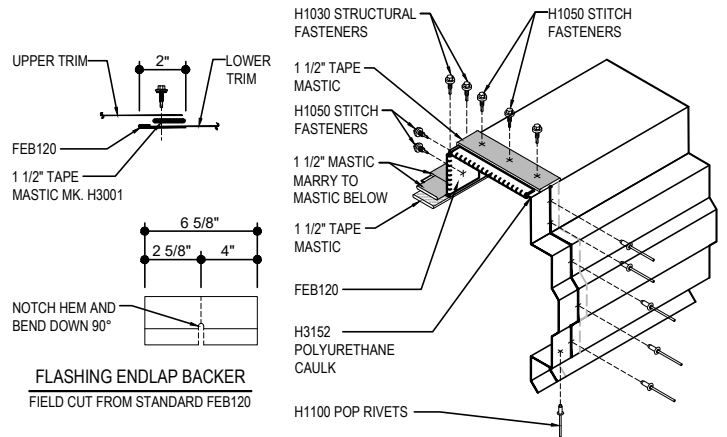
[Download the DWG file by clicking here.](#)

ERECTOR NOTE: *
STARTING RAKE CONDITION IS SHOWN. BRIDGE PREPARATION WILL VARY BETWEEN THE STARTING AND ENDING RAKES, SEE BRIDGE INSTALLATION DETAILS FOR SPECIFIC BRIDGE REQUIREMENTS.



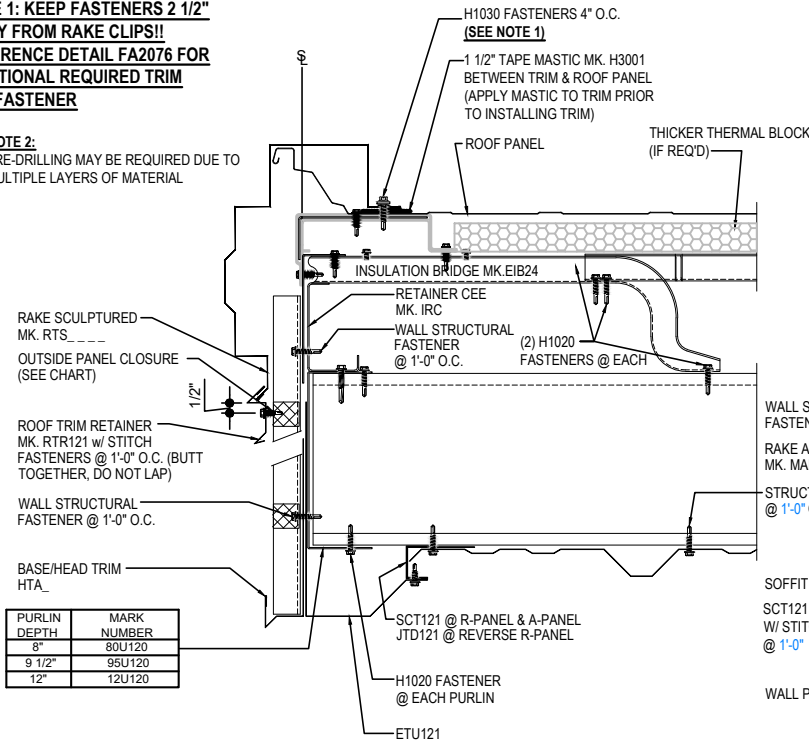
RAKE LAP & FLASHING BACKER

SLIDE FIELD CUT SECTION OF FLASHING ENDLAP BACKER ONTO THE LOWER TRIM PIECE AS SHOWN BELOW. PLACE TAPE MASTIC NEXT TO HEM OF THE BACKER (NOT ON TOP OF HEM). APPLY CONTINUOUS BEAD OF CAULK 1" FROM END OF TRIM DOWN PROFILE OF TRIM. FASTEN LAP WITH STITCH FASTENERS AND POP RIVETS AS SHOWN. ROOF STRUCTURAL FASTENERS SHOULD BE USED TO FASTEN THROUGH PANEL FLAT INTO RAKE ANGLE.

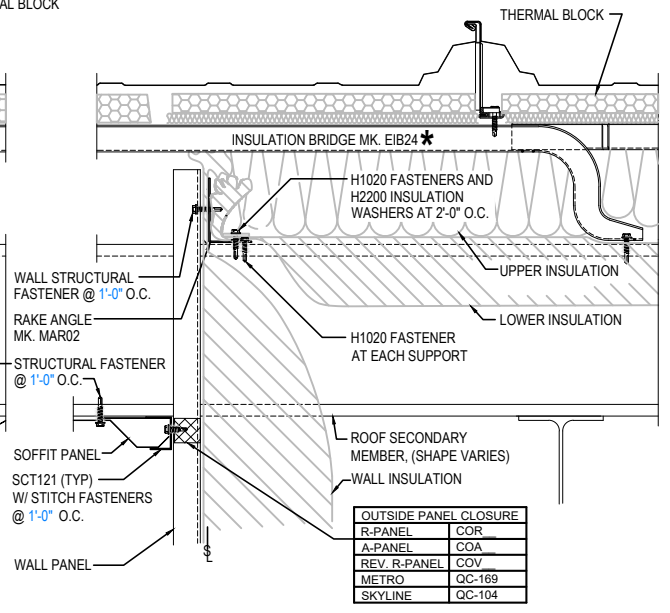


NOTE 1: KEEP FASTENERS 2 1/2" AWAY FROM RAKE CLIPS!! REFERENCE DETAIL FA2076 FOR ADDITIONAL REQUIRED TRIM LAP FASTENER

NOTE 2: PRE-DRILLING MAY BE REQUIRED DUE TO MULTIPLE LAYERS OF MATERIAL



FASTENER KEY
STRUCTURAL = H1040
STITCH = H1060



OUTSIDE PANEL CLOSURE	
R-PANEL	COR
A-PANEL	COA
REV. R-PANEL	COV
METRO	QC-169
SKYLINE	QC-104

R-Boost™ RAKE EXTENSION DETAIL

RAKE EXTENSION DETAIL w/ STANDARD WALL PANELS AND SOFFIT
SEE WALL SHEETING ERECTION NOTES FOR WALL PANEL FASTENER LOCATIONS

FO2312

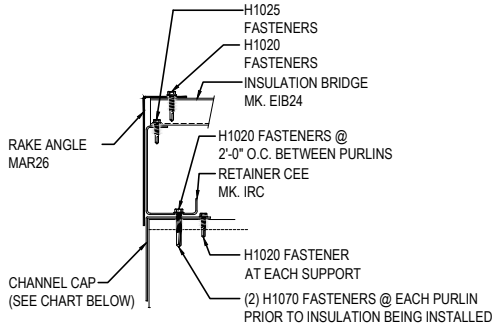
Detailer Notes:

1) N/A

FO2313 - RAKE EXTENSION - IMP WALL

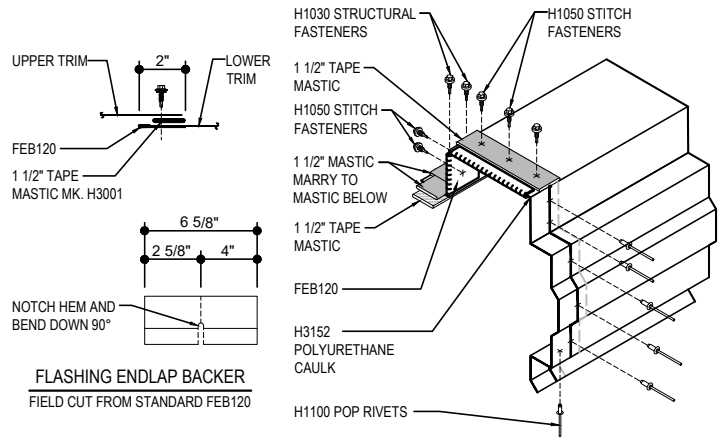
[Download the DWG file by clicking here.](#)

ERECTOR NOTE: *
STARTING RAKE CONDITION IS SHOWN. BRIDGE PREPARATION WILL VARY BETWEEN THE STARTING AND ENDING RAKES, SEE BRIDGE INSTALLATION DETAILS FOR SPECIFIC BRIDGE REQUIREMENTS.



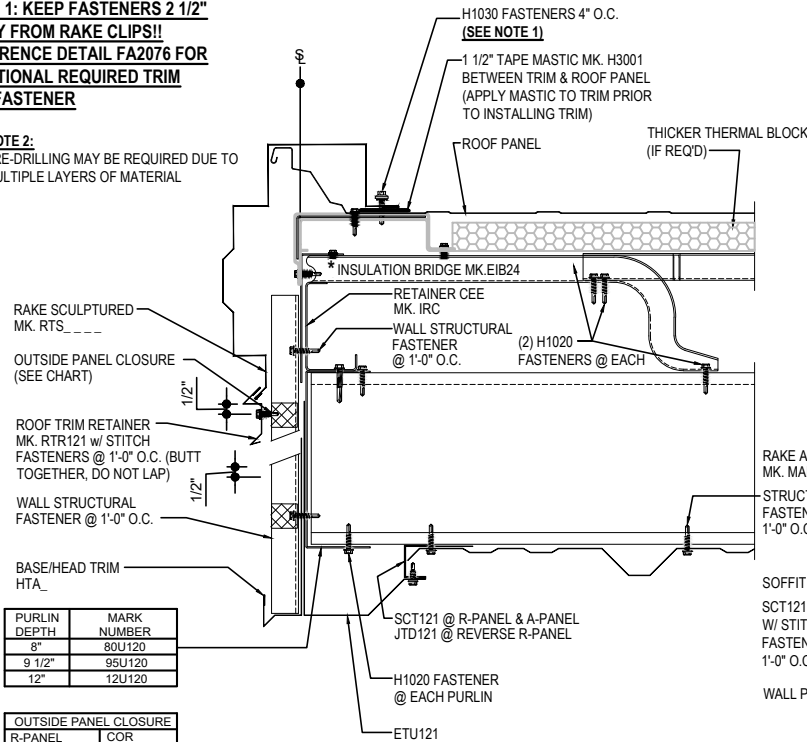
RAKE LAP & FLASHING BACKER

SLIDE FIELD CUT SECTION OF FLASHING ENLAP BACKER ONTO THE LOWER TRIM PIECE AS SHOWN BELOW. PLACE TAPE MASTIC NEXT TO HEM OF THE BACKER (NOT ON TOP OF HEM). APPLY CONTINUOUS BEAD OF CAULK 1" FROM END OF TRIM DOWN PROFILE OF TRIM. FASTEN LAP WITH STITCH FASTENERS AND POP RIVETS AS SHOWN. ROOF STRUCTURAL FASTENERS SHOULD BE USED TO FASTEN THROUGH PANEL FLAT INTO RAKE ANGLE.



NOTE 1: KEEP FASTENERS 2 1/2" AWAY FROM RAKE CLIPS!!
REFERENCE DETAIL FA2076 FOR ADDITIONAL REQUIRED TRIM LAP FASTENER

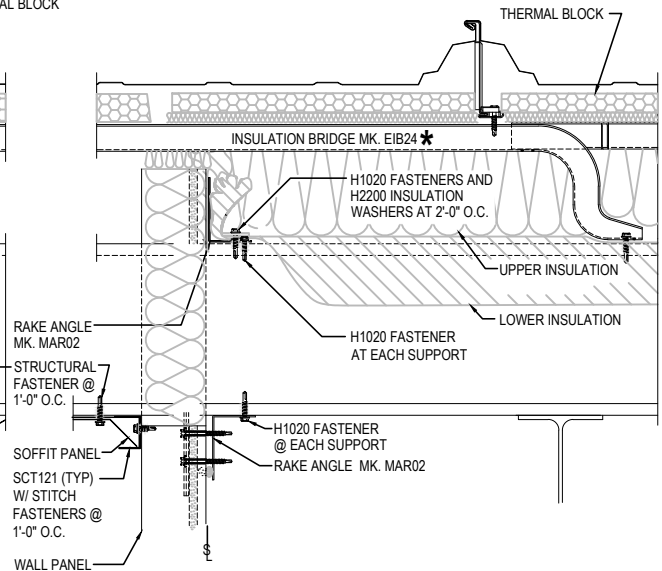
NOTE 2:
PRE-DRILLING MAY BE REQUIRED DUE TO MULTIPLE LAYERS OF MATERIAL



PURLIN DEPTH	MARK NUMBER
8"	80U120
9 1/2"	95U120
12"	12U120

OUTSIDE PANEL CLOSURE	
R-PANEL	COR
A-PANEL	COA
REV. R-PANEL	COV

FASTENER KEY
STRUCTURAL = H1040
STITCH = H1060



R-Boost™ RAKE EXTENSION DETAIL

RAKE EXTENSION DETAIL w/ INSULATED WALL PANELS AND SOFFIT
SEE WALL SHEETING ERECTION NOTES FOR WALL PANEL FASTENER LOCATIONS

FO2313

Detailer Notes:

1) N/A