

BASE CONDITIONS

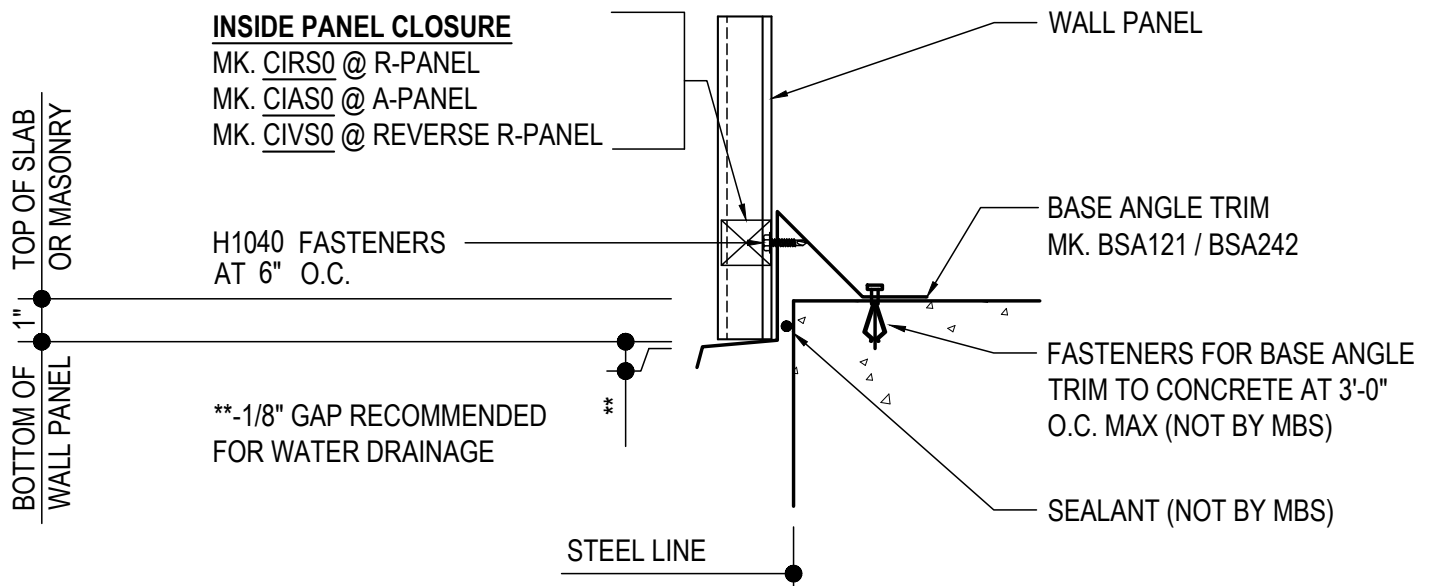
- GB0010 - BASE ANGLE TRIM DETAIL
 - GB0020 - BASE TRIM DETAIL
 - GB0040 - ALTERNATE BASE TRIM DETAIL
 - GB0100 - ABOVE FINISH FLOOR BASE TRIM DETAIL
 - GB0130 - ALTERNATE BASE TRIM DETAIL AT OPEN WALL
 - GB0140 - DRIP BASE TRIM DETAIL AT OPEN WALL
 - GB0150 - DRIP BASE TRIM DETAIL AT OPEN WALL - ZEE
 - GB0155 - DRIP BASE TRIM DETAIL AT OPEN WALL - ZEE NO ANGLE
 - GB0200 - CONCRETE NOTCH BASE DETAIL
 - GB0300 - WAINSCOT TRANSITION DETAIL - ZEE
 - GB0310 - WAINSCOT TRANSITION DETAIL - CHANNEL
-

GB0010 - BASE ANGLE TRIM DETAIL

[Download the DWG file by clicking here.](#)

* FIELD MITER BASE ANGLE TRIM AT CORNERS *

ERECTOR NOTE: LOCATE FASTENER 1 1/2" FROM BOTTOM OF
PANEL TO AVOID HITTING BACK LEG OF BSA__ TRIM.



BASE ANGLE TRIM DETAIL

SEE WALL SHEETING ERECTION NOTES FOR
WALL PANEL FASTENER LOCATIONS

GB0010

Detailer Notes:

- 1) IF CLOSURES ARE ORDERED AT WALL PANEL BASE CONDITION, YOU MUST TURN ON THE CLOSURE LAYER.
- 2) SEE NOTES ON DETAIL GB0100 FOR ABOVE FINISHED FLOOR STANDARD.

GB0020 - BASE TRIM DETAIL

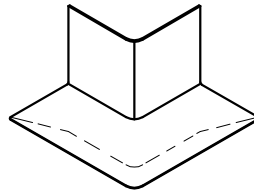
[Download the DWG file by clicking here.](#)

END CLOSURE DETAIL

FIELD TAB AND BEND TO CLOSE

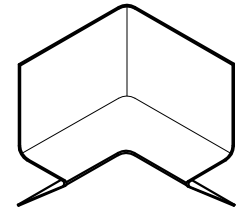
OUTSIDE CORNER TRIM

MK. H4200



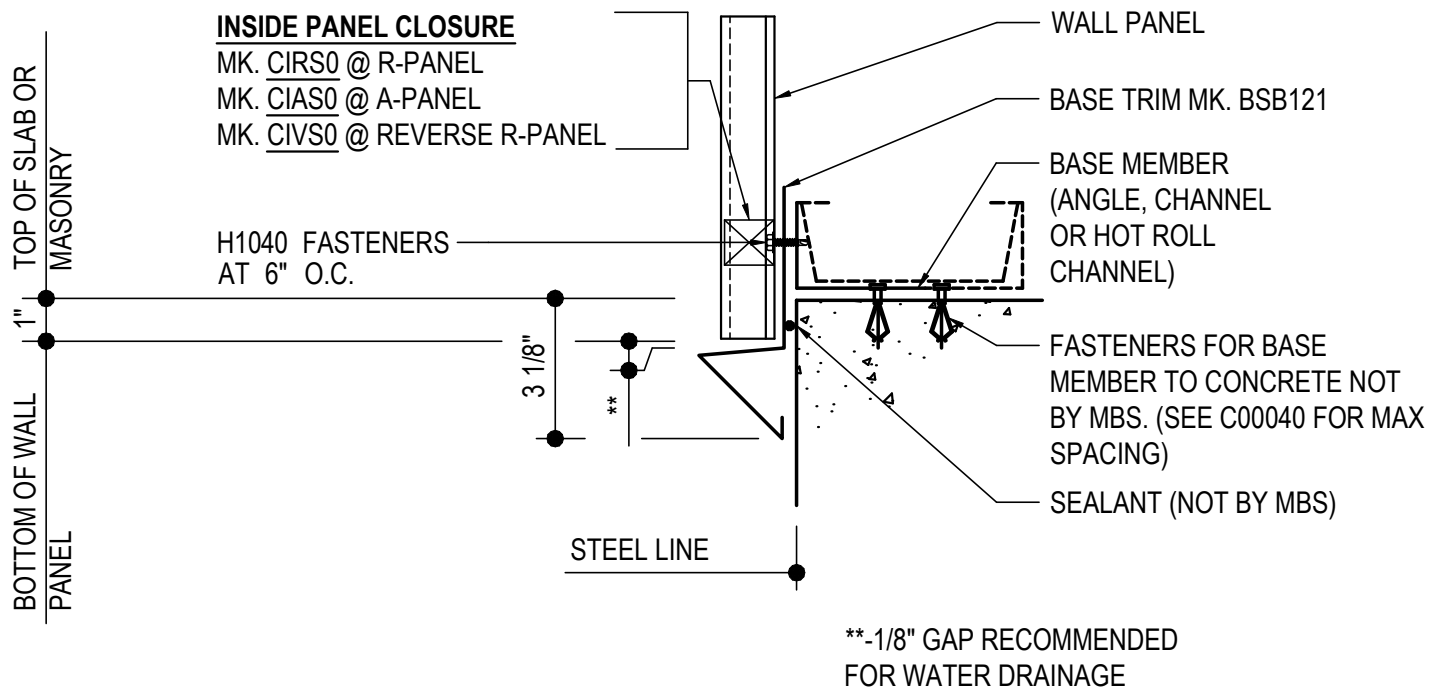
INSIDE CORNER TRIM

MK. H4210



ERECTOR NOTE:

UNTIL WALL PANELS ARE INSTALLED, (3) H1040 SCREWS ARE TO BE USED FOR TEMPORARY INSTALLATION OF THE BASE TRIM.



**1/8" GAP RECOMMENDED FOR WATER DRAINAGE

BASE TRIM DETAIL

SEE WALL SHEETING ERECTION DETAIL FOR WALL PANEL FASTENER LOCATIONS

GB0020

Detailer Notes:

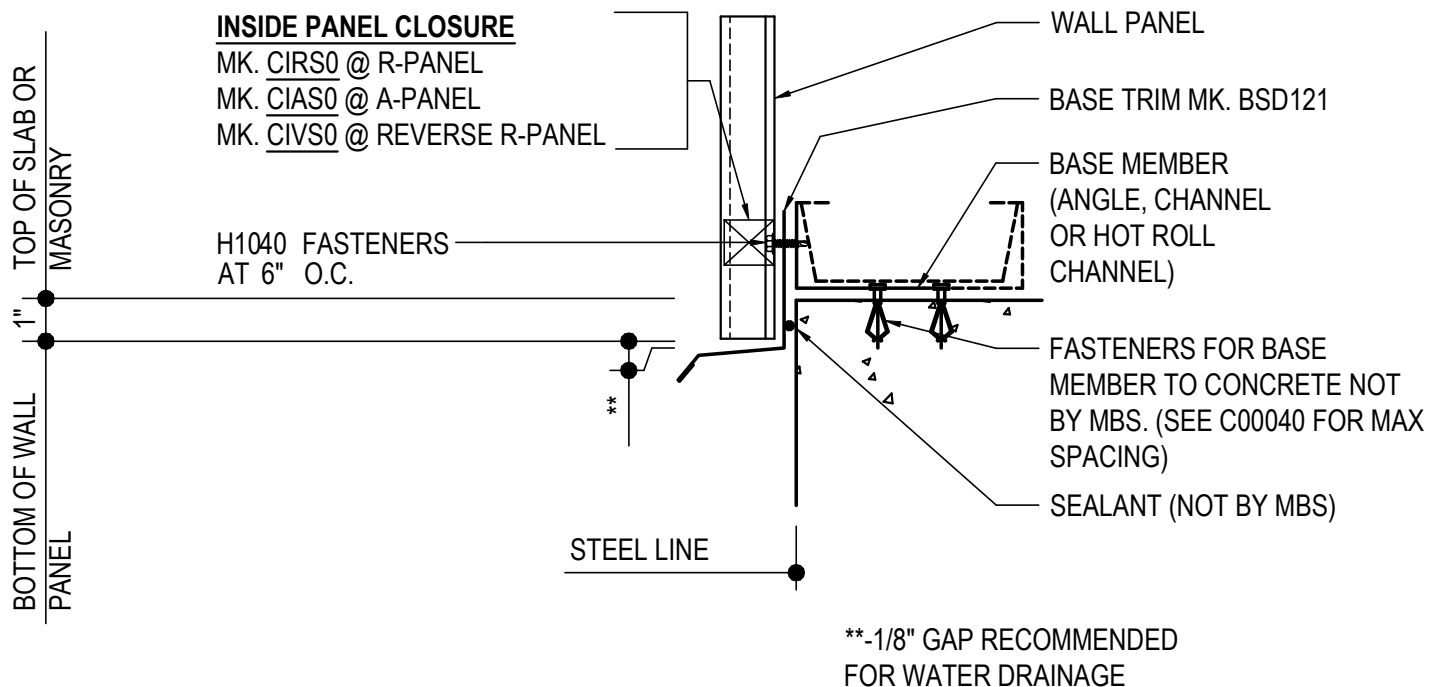
- 1) IF CLOSURES ARE ORDERED AT WALL PANEL BASE CONDITION, YOU MUST TURN ON THE CLOSURE LAYER.
- 2) SEE NOTES ON DETAIL GB0100 FOR ABOVE FINISHED FLOOR STANDARD.

GB0040 - ALTERNATE BASE TRIM DETAIL

[Download the DWG file by clicking here.](#)

ERECTOR NOTE:

UNTIL WALL PANELS ARE INSTALLED, (3) H1040 SCREWS ARE TO BE USED FOR TEMPORARY INSTALLATION OF THE BASE TRIM.
FIELD MITER BASE TRIM AT CORNERS.



ALTERNATE BASE TRIM DETAIL

SEE WALL SHEETING ERECTION DETAIL FOR WALL PANEL FASTENER LOCATIONS

GB0040

Detailer Notes:

- 1) IF CLOSURES ARE ORDERED AT WALL PANEL BASE CONDITION, YOU MUST TURN ON THE CLOSURE LAYER.
- 2) SEE NOTES ON DETAIL GB0100 FOR ABOVE FINISHED FLOOR STANDARD.

GB0100 - ABOVE FINISH FLOOR BASE TRIM DETAIL

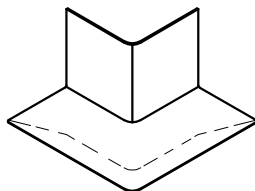
[Download the DWG file by clicking here.](#)

END CLOSURE DETAIL

FIELD TAB AND BEND TO CLOSE.

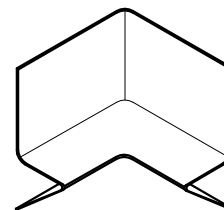
OUTSIDE CORNER TRIM

MK. H4200



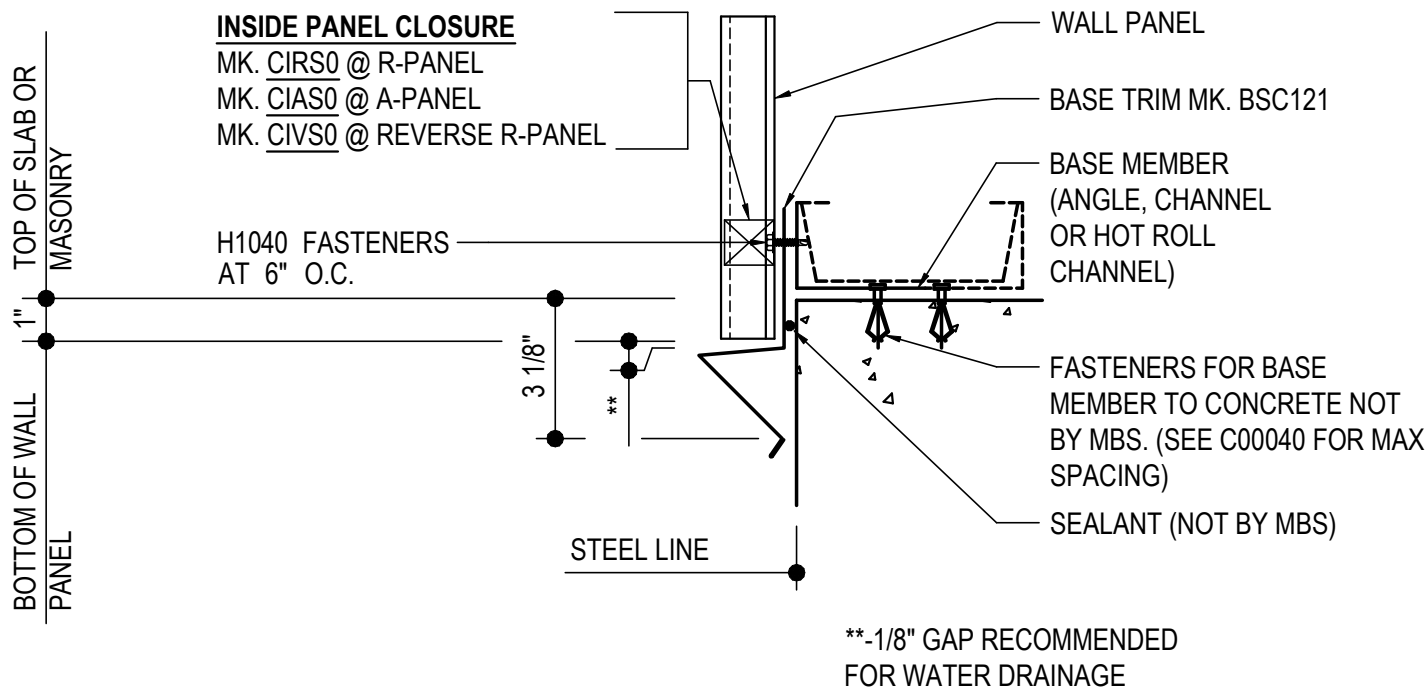
INSIDE CORNER TRIM

MK. H4210



ERECTOR NOTE:

UNTIL WALL PANELS ARE INSTALLED, (3) H1040 SCREWS ARE TO BE USED FOR TEMPORARY INSTALLATION OF THE BASE TRIM.



ABOVE FINISH FLOOR BASE TRIM DETAIL

SEE WALL SHEETING ERECTION DETAIL FOR WALL PANEL FASTENER LOCATIONS

GB0100

Detailer Notes:

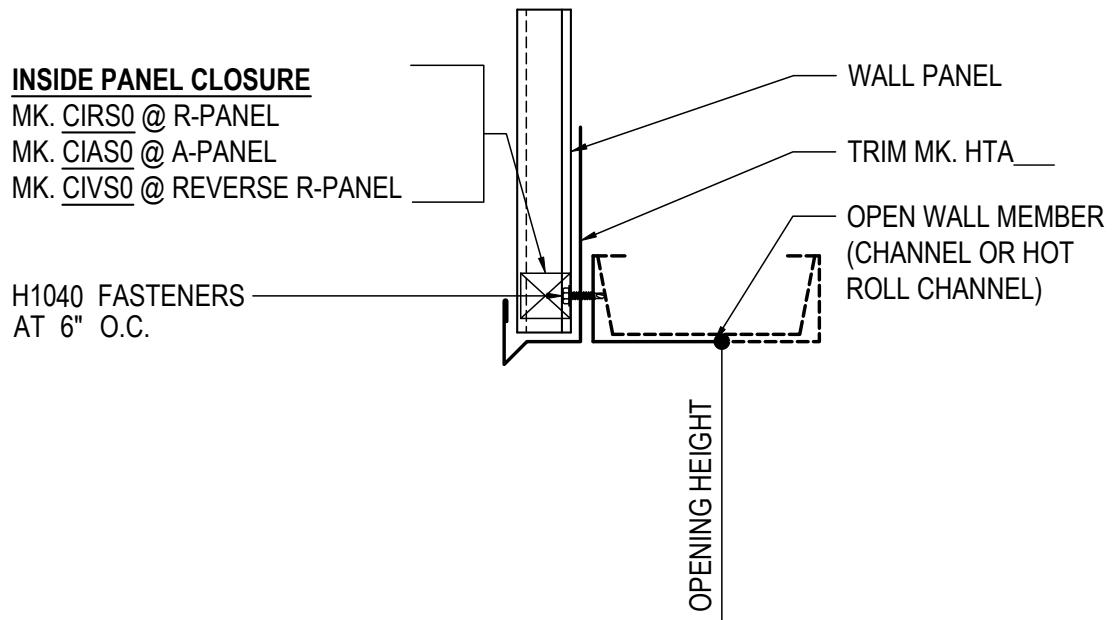
- 1) IF CLOSURES ARE ORDERED AT WALL PANEL BASE CONDITION, YOU MUST TURN ON THE CLOSURE LAYER.
- 2) THIS DETAIL IS STANDARD FOR ABOVE FINISH FLOOR BASE TRIM. THIS TRIM PROFILE REDUCES WATER DRIPPING DOWN THE FACE OF A MASONRY WALL AND LEAVING STAINS.

GB0130 - ALTERNATE BASE TRIM DETAIL AT OPEN WALL

[Download the DWG file by clicking here.](#)

ERECTOR NOTE:

UNTIL WALL PANELS ARE INSTALLED, (3) H1040 SCREWS ARE TO BE USED FOR TEMPORARY INSTALLATION OF THE BASE TRIM.



ALTERNATE BASE TRIM DETAIL AT OPEN WALL

SEE WALL SHEETING ERECTION DETAIL FOR
WALL PANEL FASTENER LOCATIONS

GB0130

Detailer Notes:

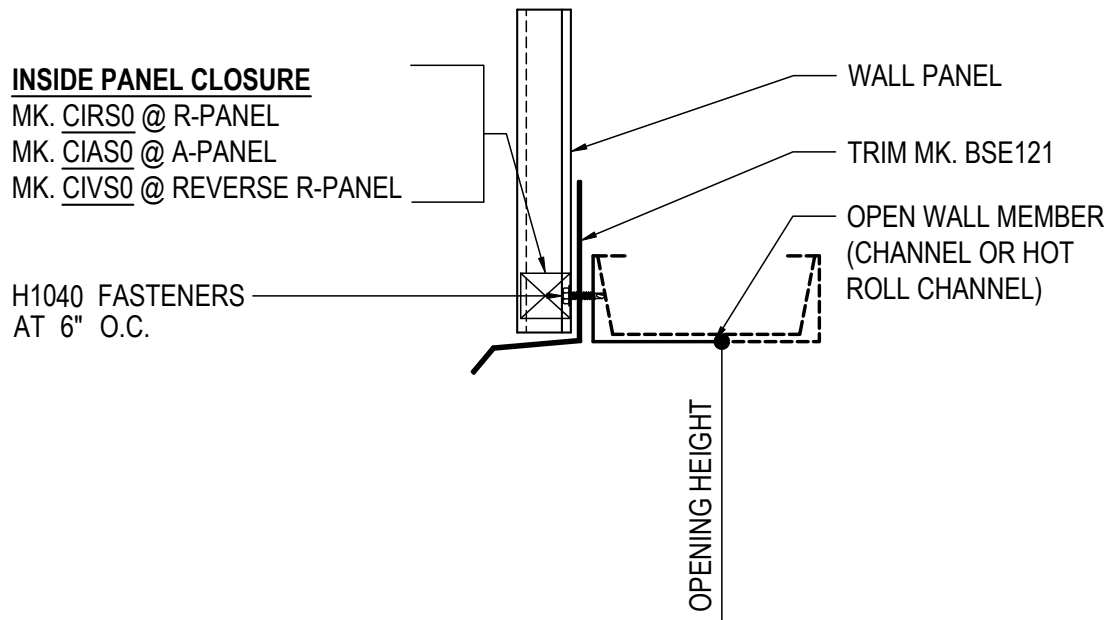
- 1) IF CLOSURES ARE ORDERED AT WALL PANEL BASE CONDITION, YOU MUST TURN ON THE CLOSURE LAYER.
- 2) CLARIFY WITH CUSTOMER IF THEY PREFER A HEAD TRIM OR DRIP TRIM. SEE ALSO DETAIL GB0140

GB0140 - DRIP BASE TRIM DETAIL AT OPEN WALL

[Download the DWG file by clicking here.](#)

ERECTOR NOTE:

UNTIL WALL PANELS ARE INSTALLED, (3) H1040 SCREWS ARE TO BE USED
FOR TEMPORARY INSTALLATION OF THE BASE TRIM.
FIELD MITER BASE TRIM AT CORNERS.



DRIP BASE TRIM DETAIL AT OPEN WALL

SEE WALL SHEETING ERECTION DETAIL FOR
WALL PANEL FASTENER LOCATIONS

GB0140

Detailer Notes:

- 1) IF CLOSURES ARE ORDERED AT WALL PANEL BASE CONDITION, YOU MUST TURN ON THE CLOSURE LAYER.
- 2) CLARIFY WITH CUSTOMER IF THEY PREFER A HEAD TRIM OR DRIP TRIM. SEE ALSO DETAIL GB0130

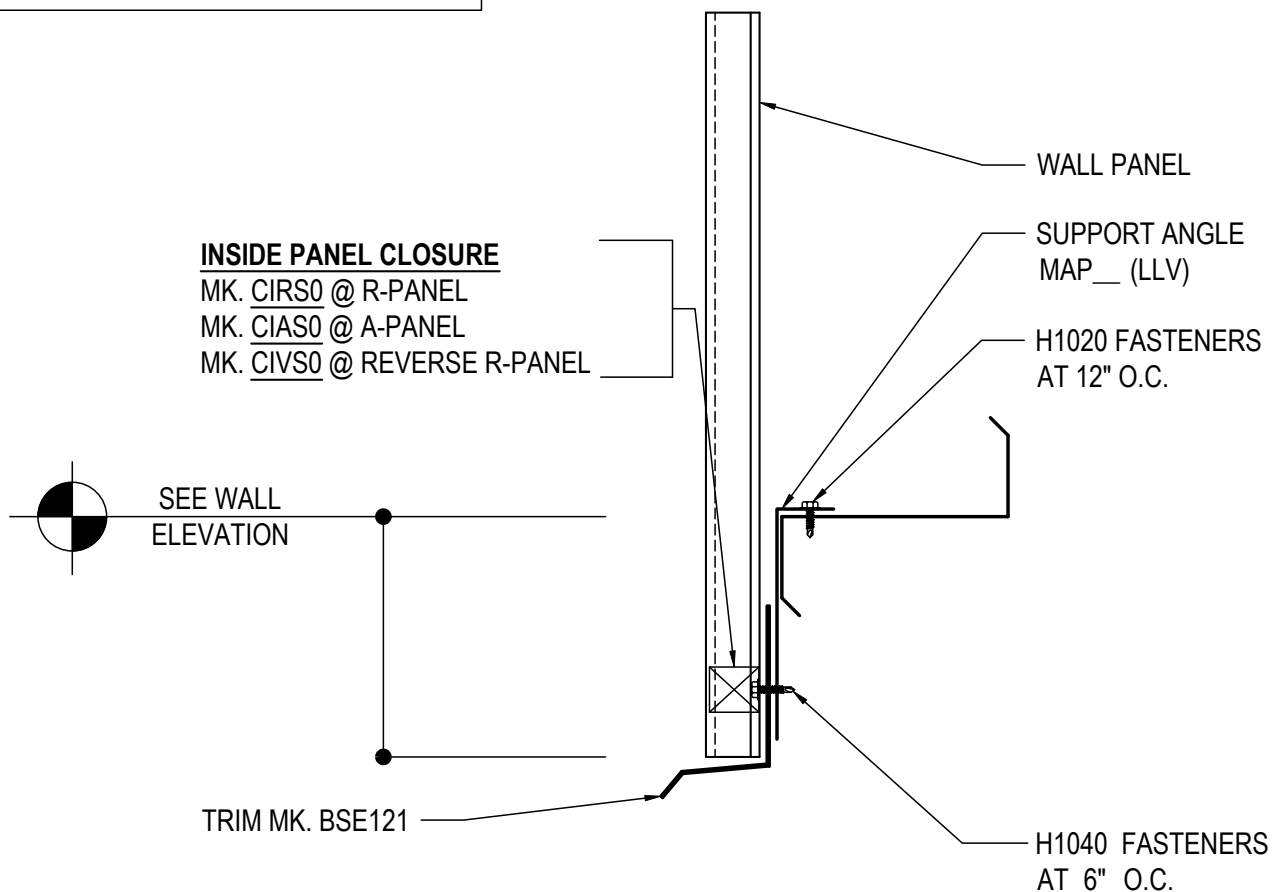
GB0150 - DRIP BASE TRIM DETAIL AT OPEN WALL - ZEE

[Download the DWG file by clicking here.](#)

ERECTOR NOTE:

UNTIL WALL PANELS ARE INSTALLED, (3) H1040 SCREWS ARE TO BE USED FOR TEMPORARY INSTALLATION OF THE BASE TRIM.
FIELD MITER BASE TRIM AT CORNERS.

NOTE: IF GIRT BRACING IS PRESENT, SUPPORT ANGLE WILL NEED TO BE NOTCHED AROUND GIRT BRACES.



DRIP BASE TRIM DETAIL AT OPEN WALL

SEE WALL SHEETING ERECTION DETAIL FOR
WALL PANEL FASTENER LOCATIONS

GB0150

Detailer Notes:

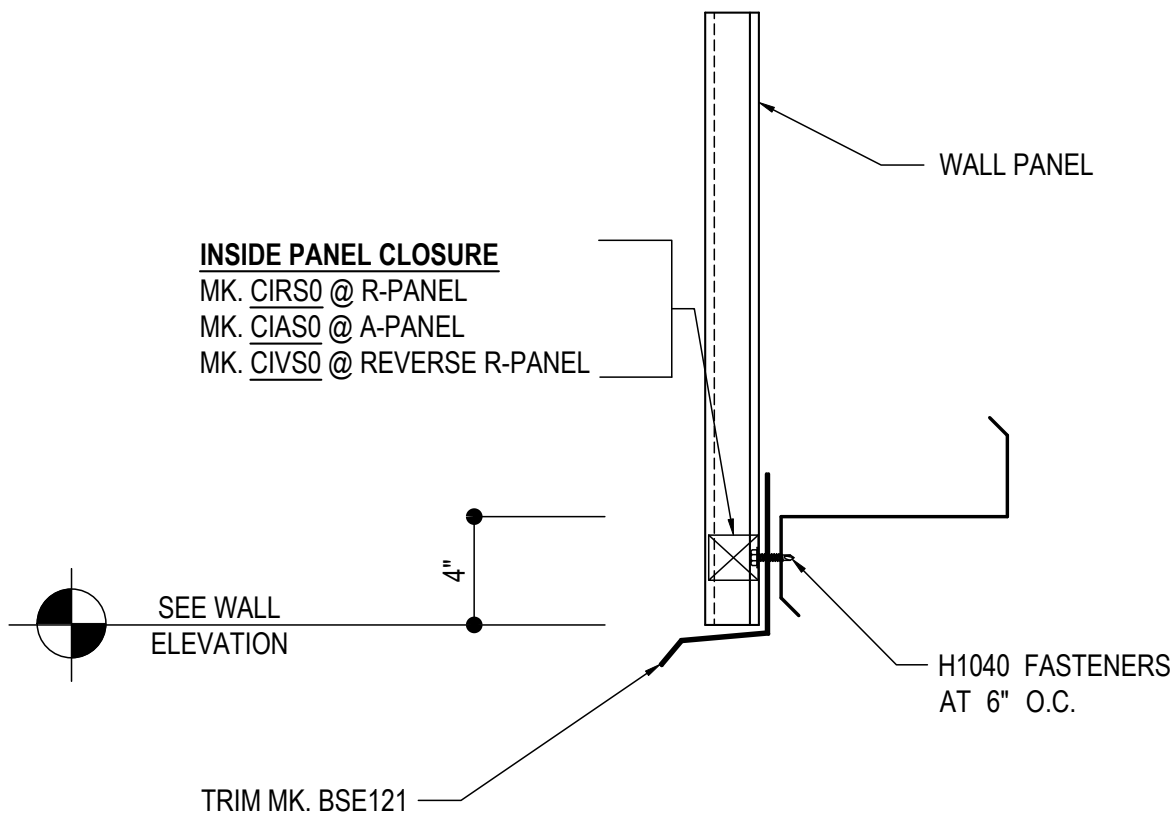
- 1) IF CLOSURES ARE ORDERED AT WALL PANEL BASE CONDITION, YOU MUST TURN ON THE CLOSURE LAYER.

GB0155 - DRIP BASE TRIM DETAIL AT OPEN WALL - ZEE NO ANGLE

[Download the DWG file by clicking here.](#)

ERECTOR NOTE:

UNTIL WALL PANELS ARE INSTALLED, (3) H1040 SCREWS ARE TO BE USED FOR TEMPORARY INSTALLATION OF THE BASE TRIM.
FIELD MITER BASE TRIM AT CORNERS.



DRIP BASE TRIM DETAIL AT OPEN WALL

SEE WALL SHEETING ERECTION DETAIL FOR
WALL PANEL FASTENER LOCATIONS

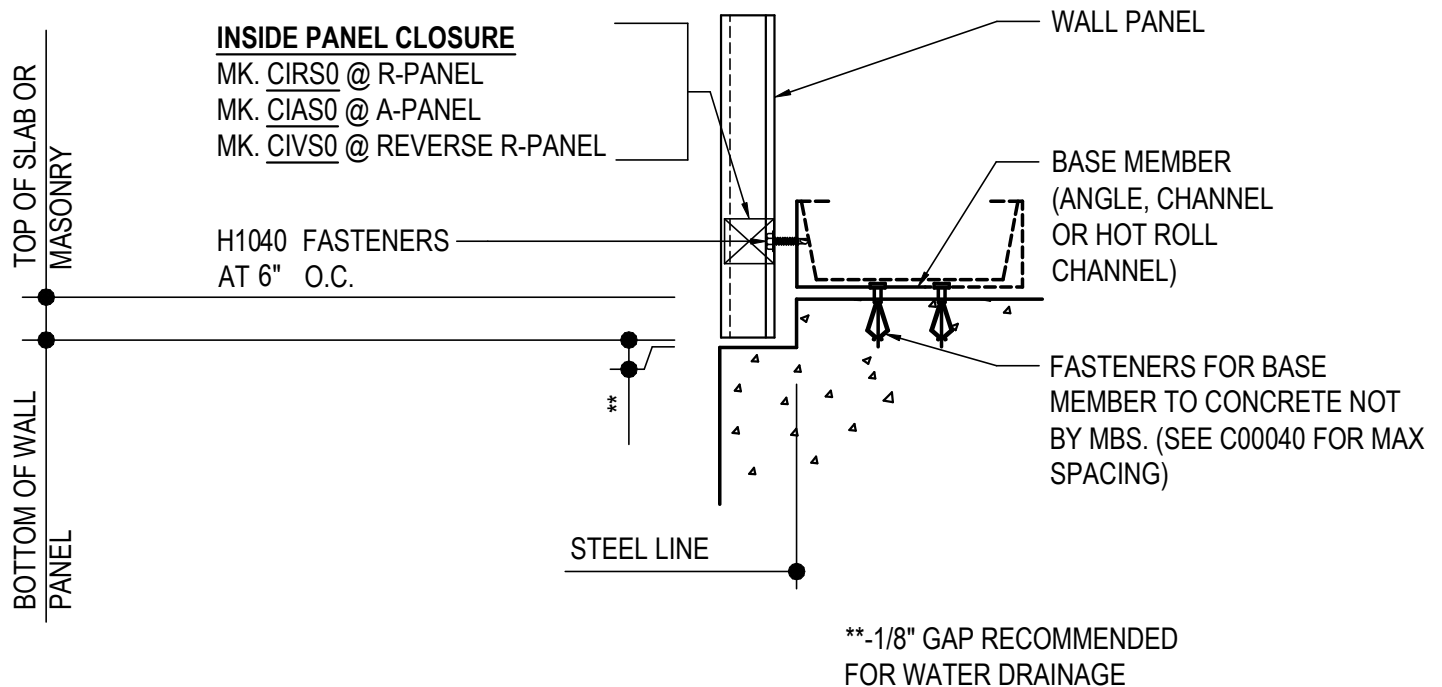
GB0155

Detailer Notes:

- 1) IF CLOSURES ARE ORDERED AT WALL PANEL BASE CONDITION, YOU MUST TURN ON THE CLOSURE LAYER.

GB0200 - CONCRETE NOTCH BASE DETAIL

[Download the DWG file by clicking here.](#)



CONCRETE NOTCH BASE DETAIL

SEE WALL SHEETING ERECTION DETAIL FOR WALL PANEL FASTENER LOCATIONS

GB0200

Detailer Notes:

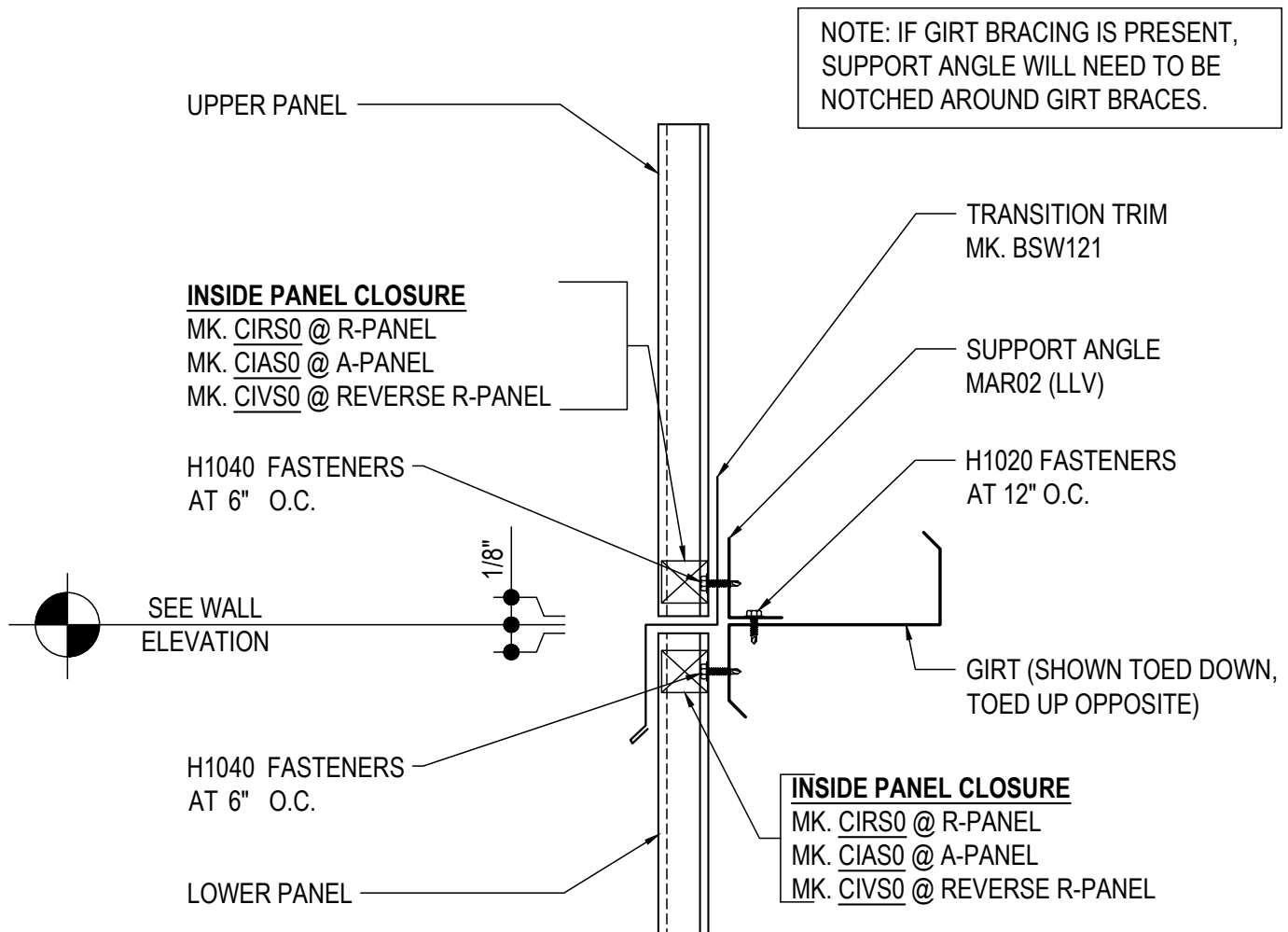
- 1) IF CLOSURES ARE ORDERED AT WALL PANEL BASE CONDITION, YOU MUST TURN ON THE CLOSURE LAYER.

GB0300 - WAINSCOT TRANSITION DETAIL - ZEE

[Download the DWG file by clicking here.](#)

ERECTOR NOTE:

AFTER LOWER PANELS ARE INSTALLED, (3) H1040 SCREWS ARE TO BE USED FOR TEMPORARY INSTALLATION OF THE TRANSITION TRIM.



WAINSCOT TRANSITION DETAIL

SEE WALL SHEETING ERECTION DETAIL FOR
WALL PANEL FASTENER LOCATIONS

GB0300

Detailer Notes:

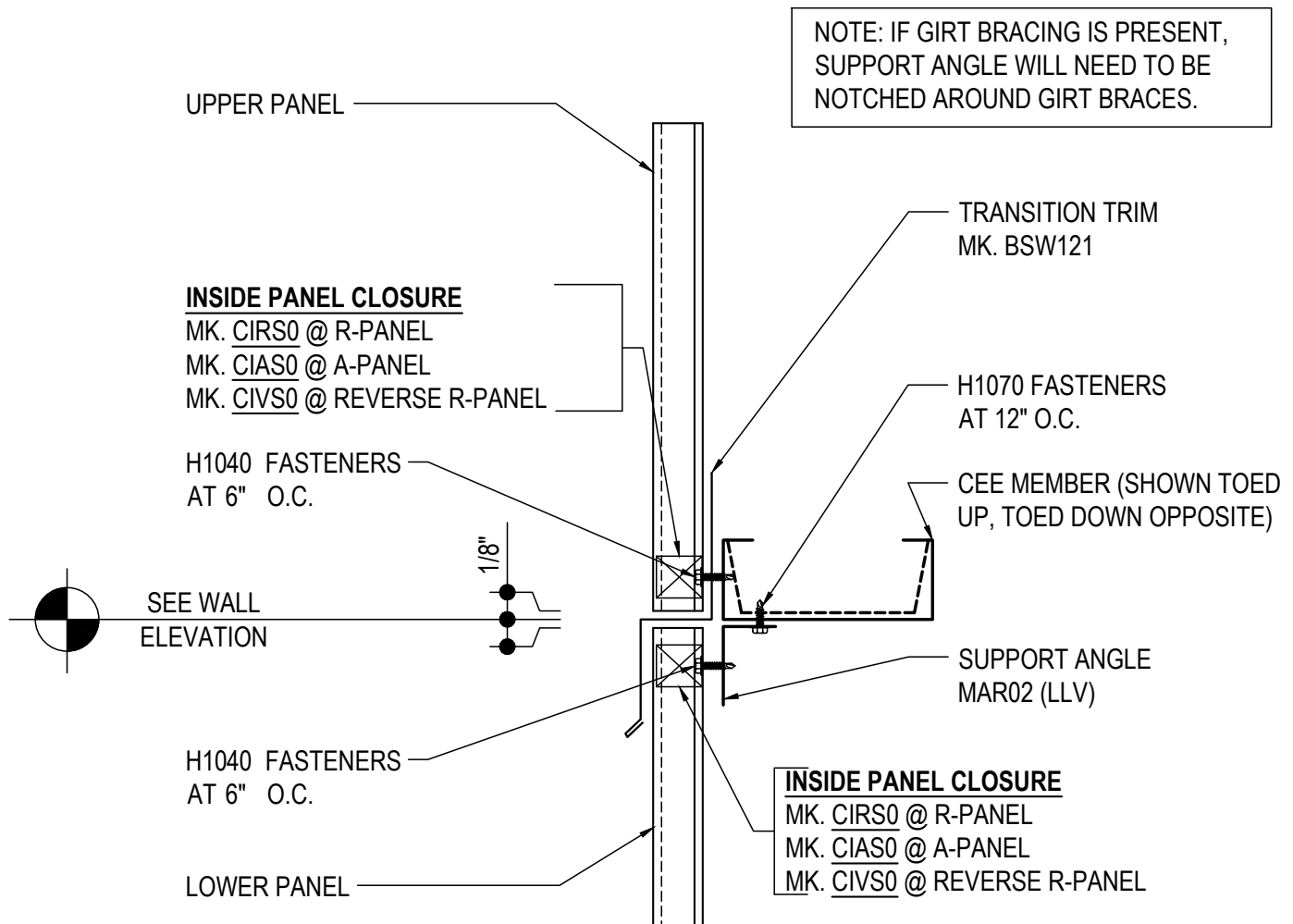
- 1) IF CLOSURES ARE ORDERED AT WALL PANEL BASE CONDITION, YOU MUST TURN ON THE CLOSURE LAYER.
- 2) TRANSITION TRIM COLOR SHOULD EITHER MATCH THE LOWER PANEL COLOR OR BE A COMPLETELY UNIQUE COLOR.
- 3) **NOTE:** WHEN USING TWO DIFFERENT PANEL PROFILES, THE TOP AND BOTTOM MUST HAVE IDENTICAL START AND FINISH TRIMS. AN ALTERNATE CORNER TRIM MAY BE REQUIRED.

GB0310 - WAINSCOT TRANSITION DETAIL - CHANNEL

[Download the DWG file by clicking here.](#)

ERECTOR NOTE:

AFTER LOWER PANELS ARE INSTALLED, (3) H1040 SCREWS ARE TO BE USED FOR TEMPORARY INSTALLATION OF THE TRANSITION TRIM.



WAINSCOT TRANSITION DETAIL

SEE WALL SHEETING ERECTION DETAIL FOR
WALL PANEL FASTENER LOCATIONS

GB0310

Detailer Notes:

- 1) IF CLOSURES ARE ORDERED AT WALL PANEL BASE CONDITION, YOU MUST TURN ON THE CLOSURE LAYER.
- 2) TRANSITION TRIM COLOR SHOULD EITHER MATCH THE LOWER PANEL COLOR OR BE A COMPLETELY UNIQUE COLOR.
- 3) **NOTE:** WHEN USING TWO DIFFERENT PANEL PROFILES, THE TOP AND BOTTOM MUST HAVE IDENTICAL START AND FINISH TRIMS. AN ALTERNATE CORNER TRIM MAY BE REQUIRED.