

**BASE CONDITIONS (URBAN SERIES PANEL)**

GB3010 - BASE ANGLE TRIM DETAIL

GB3020 - BASE TRIM DETAIL

GB3040 - ALTERNATE BASE TRIM DETAIL

GB3100 - ABOVE FINISH FLOOR BASE TRIM DETAIL

GB3140 - DRIP BASE TRIM DETAIL AT OPEN WALL

GB3150 - DRIP BASE TRIM DETAIL AT OPEN WALL - ZEE

GB3155 - DRIP BASE TRIM DETAIL AT OPEN WALL - ZEE NO ANGLE

GB3200 - CONCRETE NOTCH BASE DETAIL

GB3300 - WAINSCOT TRANSITION DETAIL - ZEE

GB3310 - WAINSCOT TRANSITION DETAIL - CHANNEL

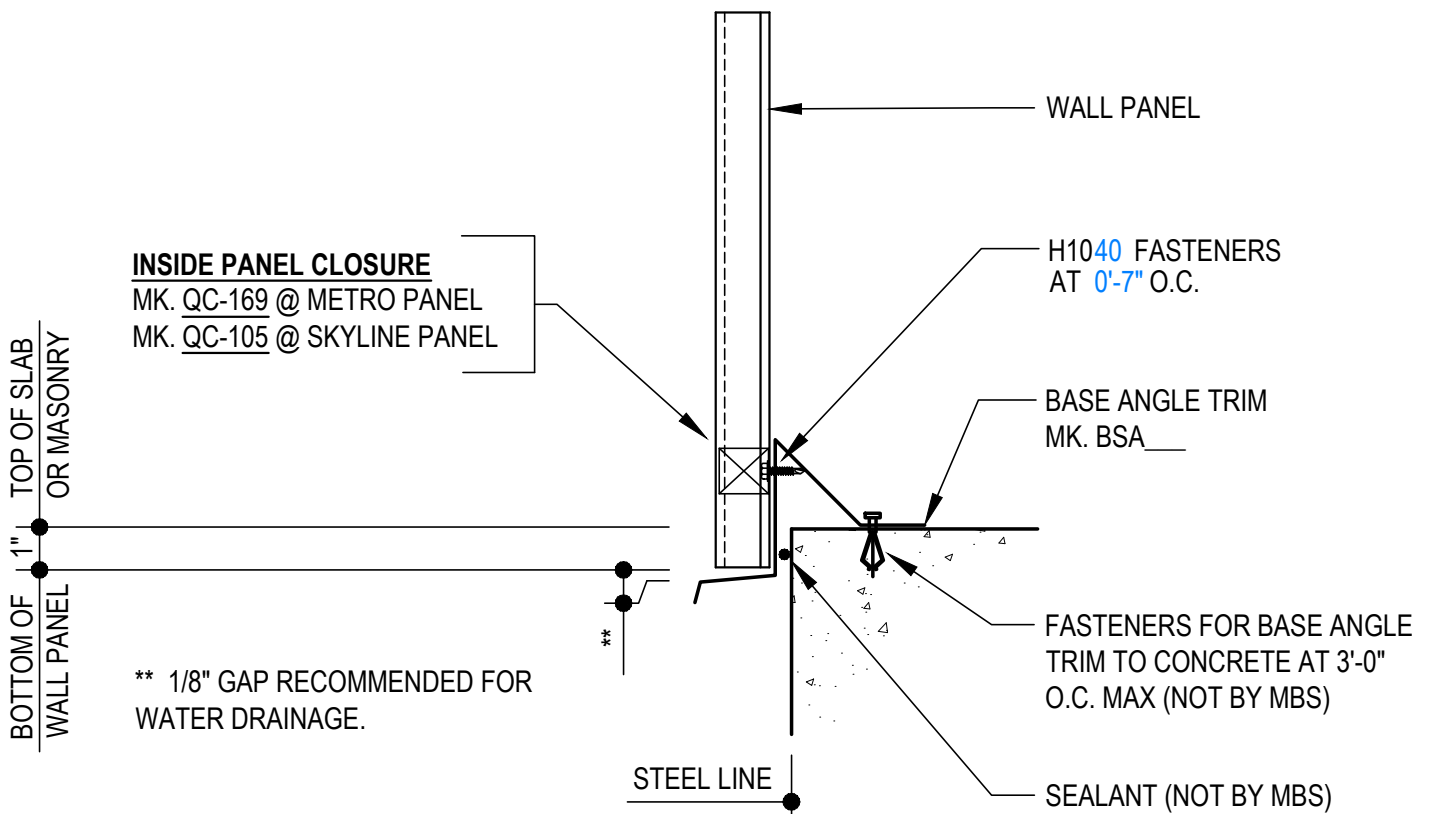
---

GB3010 - BASE ANGLE TRIM DETAIL

[Download the DWG file by clicking here.](#)

\* FIELD MITER BASE ANGLE TRIM AT CORNERS \*

ERECTOR NOTE: LOCATE FASTENER 1 1/2" FROM BOTTOM OF PANEL TO AVOID HITTING BACK LEG OF BSA\_\_ TRIM.



**BASE ANGLE TRIM DETAIL**

SEE WALL SHEETING ERECTION NOTES FOR WALL PANEL FASTENER LOCATIONS

**GB3010**

Detailer Notes:

- 1) IF CLOSURES ARE ORDERED AT WALL PANEL BASE CONDITION, CLOSURE LAYER MUST BE TURNED ON.
- 2) SEE NOTES ON DETAIL GB3100 FOR ABOVE FINISHED FLOOR STANDARD.

GB3020 - BASE TRIM DETAIL

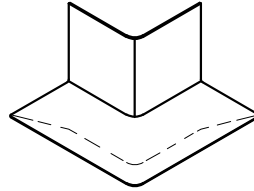
[Download the DWG file by clicking here.](#)

**END CLOSURE DETAIL**

FIELD TAB AND BEND TO CLOSE

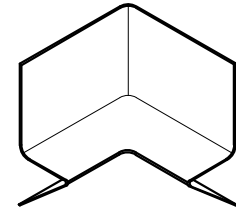
**OUTSIDE CORNER TRIM**

MK. H4200



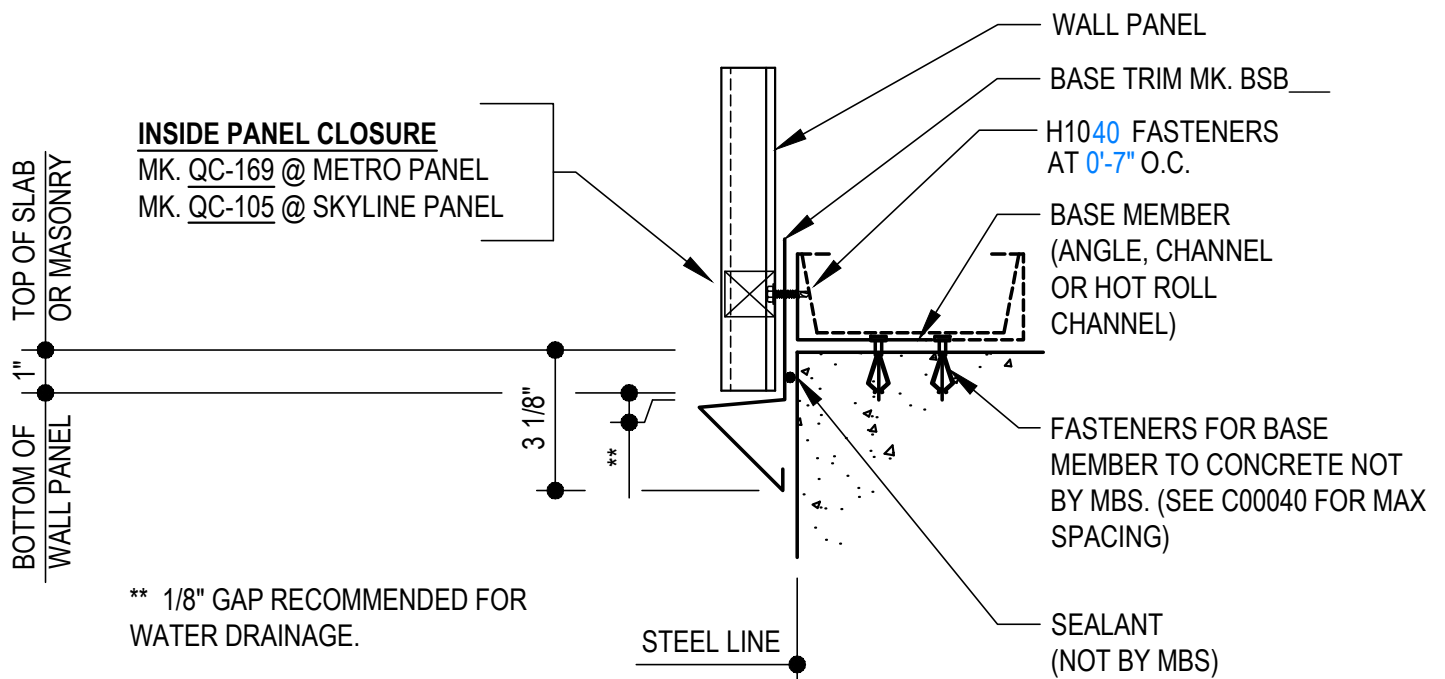
**INSIDE CORNER TRIM**

MK. H4210



**ERECTOR NOTE:**

UNTIL WALL PANELS ARE INSTALLED, (3) H1040 SCREWS ARE TO BE USED FOR TEMPORARY INSTALLATION OF THE BASE TRIM.



**BASE TRIM DETAIL**

SEE WALL SHEETING ERECTION DETAIL FOR WALL PANEL FASTENER LOCATIONS

**GB3020**

**Detailer Notes:**

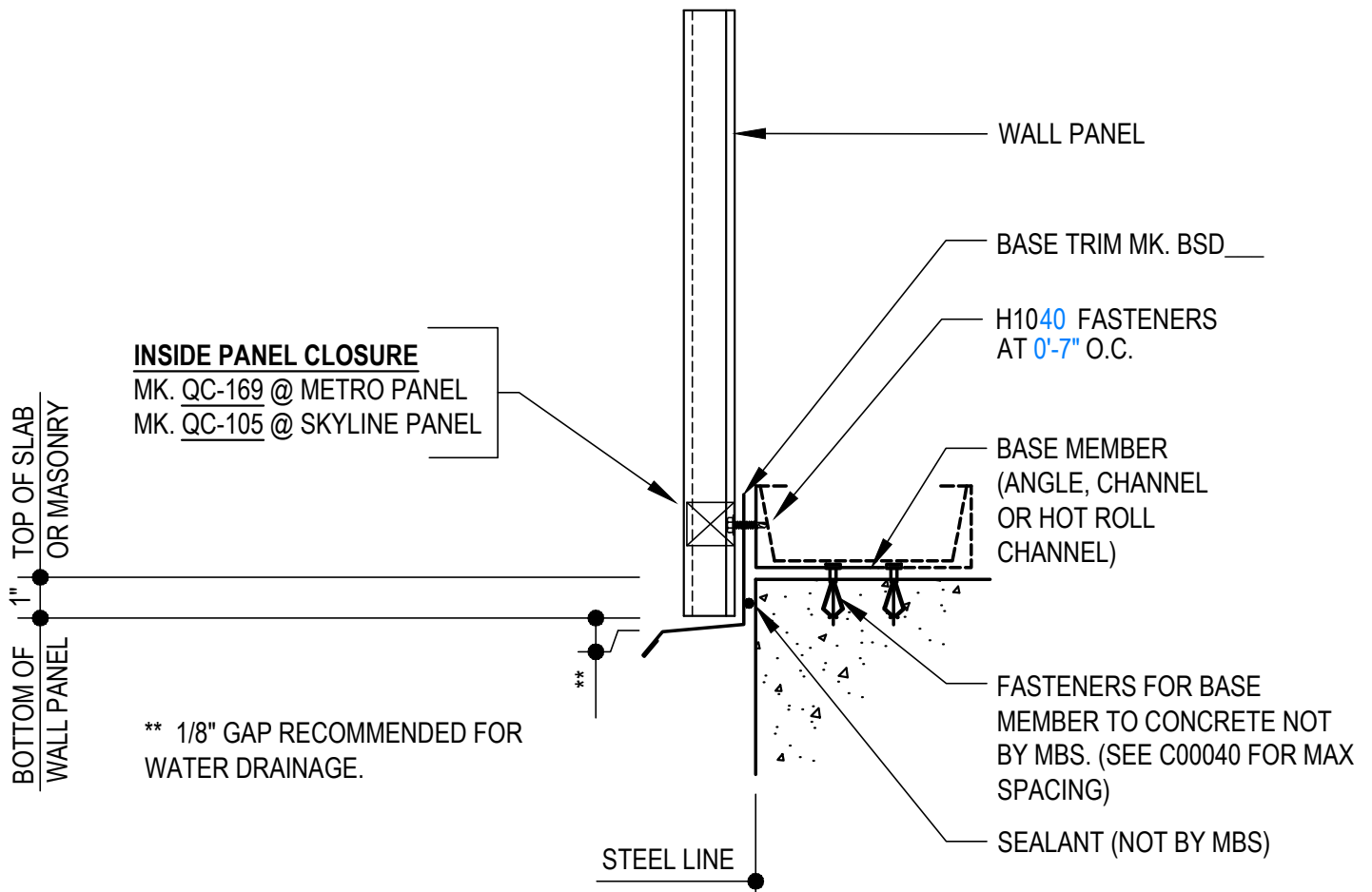
- 1) IF CLOSURES ARE ORDERED AT WALL PANEL BASE CONDITION, CLOSURE LAYER MUST BE TURNED ON.
- 2) SEE NOTES ON DETAIL GB3100 FOR ABOVE FINISHED FLOOR STANDARD.

GB3040 - ALTERNATE BASE TRIM DETAIL

[Download the DWG file by clicking here.](#)

**ERECTOR NOTE:**

UNTIL WALL PANELS ARE INSTALLED, (3) H1040 SCREWS ARE TO BE USED FOR TEMPORARY INSTALLATION OF THE BASE TRIM. FIELD MITER BASE TRIM AT CORNERS.



**ALTERNATE BASE TRIM DETAIL**

SEE WALL SHEETING ERECTION DETAIL FOR WALL PANEL FASTENER LOCATIONS

**GB3040**

**Detailer Notes:**

- 1) IF CLOSURES ARE ORDERED AT WALL PANEL BASE CONDITION, CLOSURE LAYER MUST BE TURNED ON.
- 2) SEE NOTES ON DETAIL GB3100 FOR ABOVE FINISHED FLOOR STANDARD.

GB3100 - ABOVE FINISH FLOOR BASE TRIM DETAIL

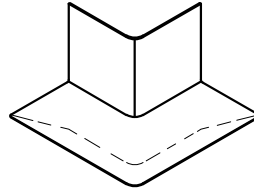
[Download the DWG file by clicking here.](#)

**END CLOSURE DETAIL**

FIELD TAB AND BEND TO CLOSE.

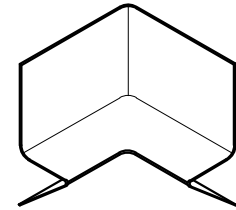
**OUTSIDE CORNER TRIM**

MK. H4200



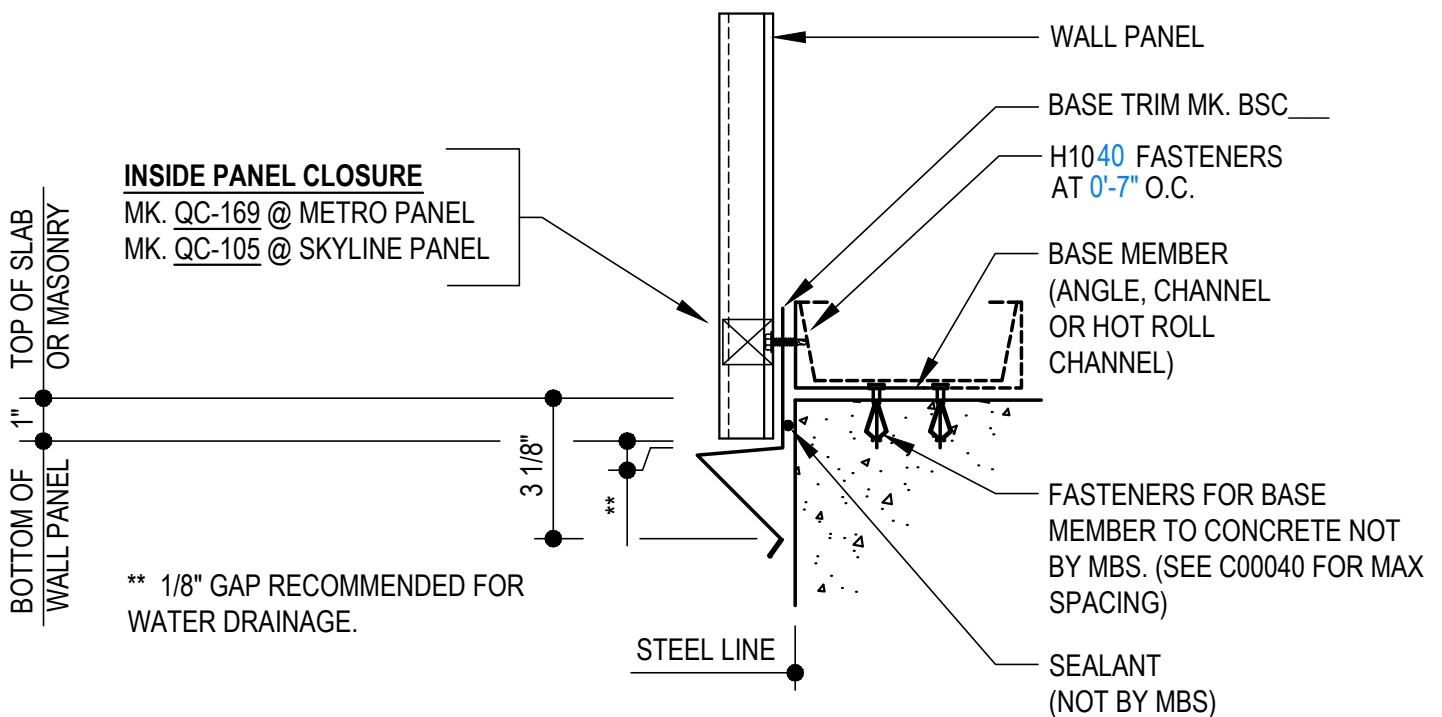
**INSIDE CORNER TRIM**

MK. H4210



**ERECTOR NOTE:**

UNTIL WALL PANELS ARE INSTALLED, (3) H1040 SCREWS ARE TO BE USED FOR TEMPORARY INSTALLATION OF THE BASE TRIM.



**ABOVE FINISH FLOOR BASE TRIM DETAIL**

SEE WALL SHEETING ERECTION DETAIL FOR WALL PANEL FASTENER LOCATIONS

**GB3100**

**Detailer Notes:**

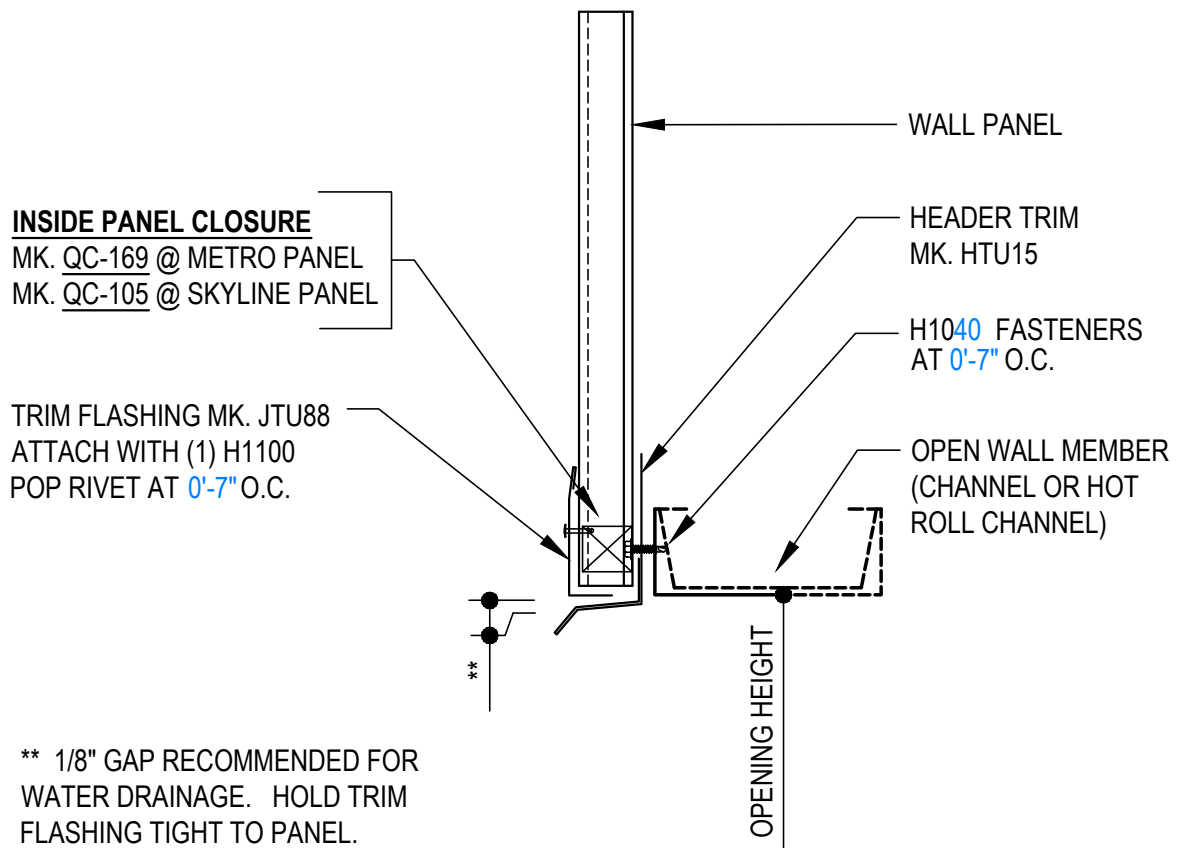
- 1) IF CLOSURES ARE ORDERED AT WALL PANEL BASE CONDITION, CLOSURE LAYER MUST BE TURNED ON.
- 2) THIS DETAIL IS STANDARD FOR ABOVE FINISH FLOOR BASE TRIM. THIS TRIM PROFILE REDUCES WATER DRIPPING DOWN THE FACE OF A MASONRY WALL AND LEAVING STAINS.

GB3140 - DRIP BASE TRIM DETAIL AT OPEN WALL

[Download the DWG file by clicking here.](#)

**ERECTOR NOTE:**

UNTIL WALL PANELS ARE INSTALLED, (3) H1040 SCREWS ARE TO BE USED FOR TEMPORARY INSTALLATION OF THE HEADER TRIM. FIELD MITER HEADER TRIM AT CORNERS.



**DRIP HEADER TRIM DETAIL AT OPEN WALL**

SEE WALL SHEETING ERECTION DETAIL FOR  
WALL PANEL FASTENER LOCATIONS

**GB3140**

**Detailer Notes:**

- 1) IF CLOSURES ARE ORDERED AT WALL PANEL BASE CONDITION, CLOSURE LAYER MUST BE TURNED ON.

GB3150 - DRIP BASE TRIM DETAIL AT OPEN WALL - ZEE

[Download the DWG file by clicking here.](#)

ERECTOR NOTE:

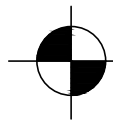
UNTIL WALL PANELS ARE INSTALLED, (3) H1040 SCREWS ARE TO BE USED FOR TEMPORARY INSTALLATION OF THE HEADER TRIM. FIELD MITER HEADER TRIM AT CORNERS.

NOTE: IF GIRT BRACING IS PRESENT, SUPPORT ANGLE WILL NEED TO BE NOTCHED AROUND GIRT BRACES.

**INSIDE PANEL CLOSURE**

MK. QC-169 @ METRO PANEL  
MK. QC-105 @ SKYLINE PANEL

TRIM FLASHING MK. JTU88  
ATTACH WITH (1) H1100  
POP RIVET AT 0'-7" O.C.

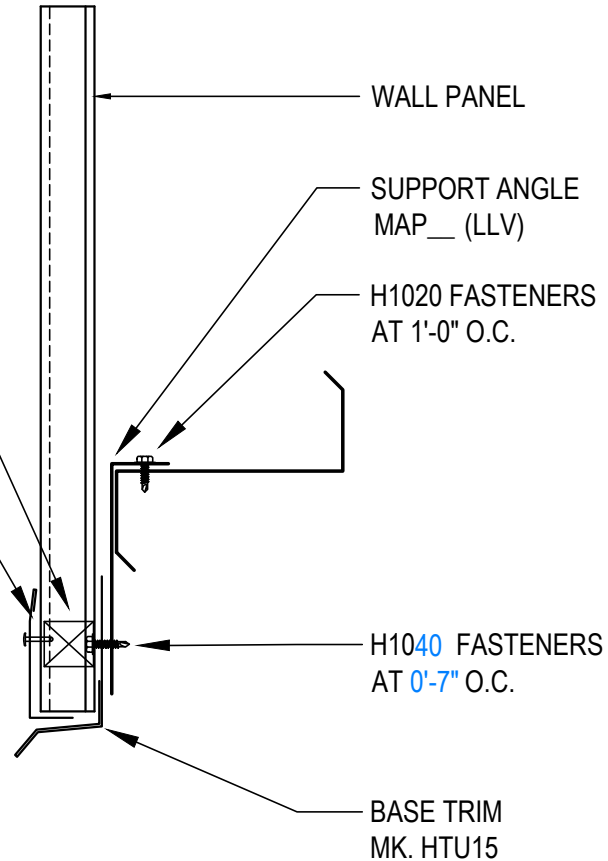


SEE WALL  
ELEVATION

???

\*\*

\*\* 1/8" GAP RECOMMENDED FOR WATER DRAINAGE. HOLD TRIM FLASHING TIGHT TO PANEL.



WALL PANEL

SUPPORT ANGLE  
MAP\_\_ (LLV)

H1020 FASTENERS  
AT 1'-0" O.C.

H1040 FASTENERS  
AT 0'-7" O.C.

BASE TRIM  
MK. HTU15

**DRIP BASE TRIM DETAIL AT OPEN WALL**

SEE WALL SHEETING ERECTION DETAIL FOR  
WALL PANEL FASTENER LOCATIONS

**GB3150**

Detailer Notes:

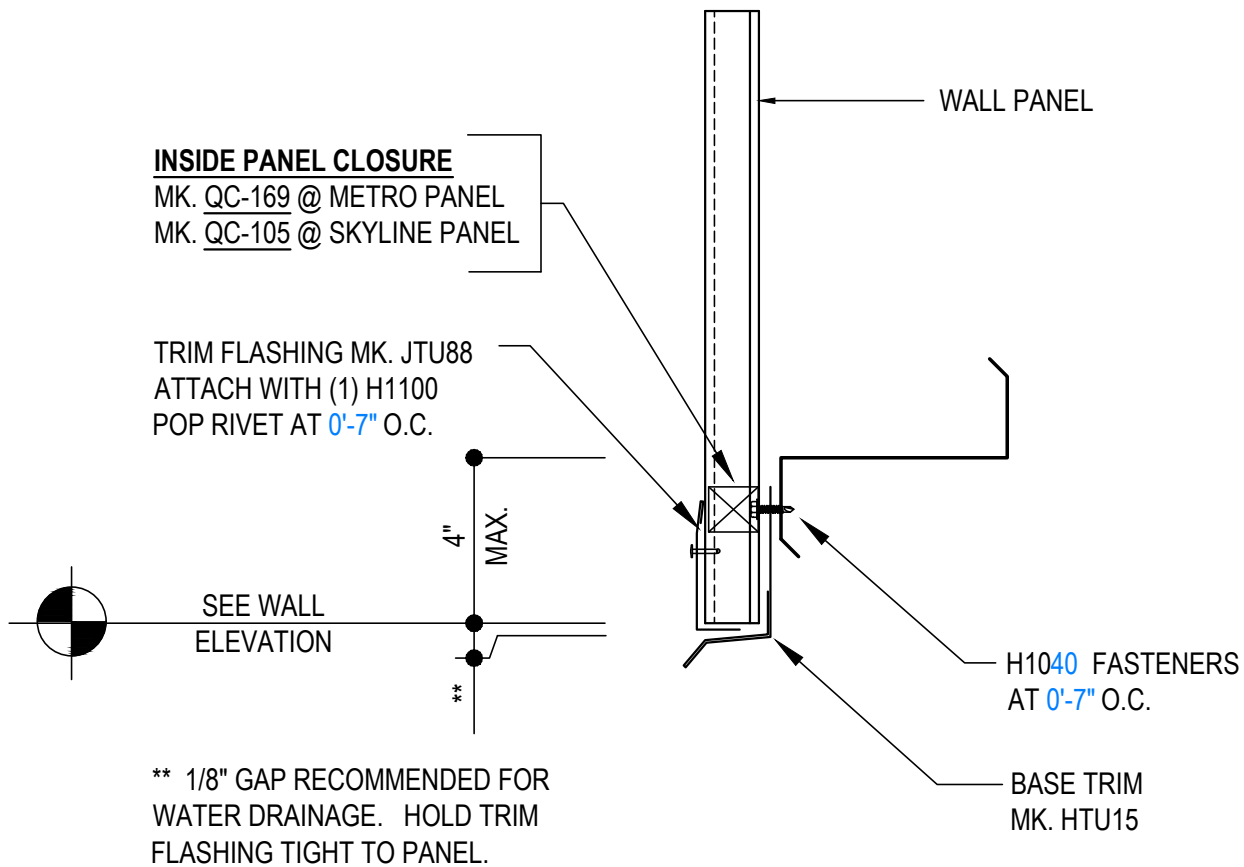
- 1) IF CLOSURES ARE ORDERED AT WALL PANEL BASE CONDITION, CLOSURE LAYER MUST BE TURNED ON.

GB3155 - DRIP BASE TRIM DETAIL AT OPEN WALL - ZEE NO ANGLE

[Download the DWG file by clicking here.](#)

ERECTOR NOTE:

UNTIL WALL PANELS ARE INSTALLED, (3) H1040 SCREWS ARE TO BE USED FOR TEMPORARY INSTALLATION OF THE HEADER TRIM. FIELD MITER HEADER TRIM AT CORNERS.



**DRIP BASE TRIM DETAIL AT OPEN WALL**

SEE WALL SHEETING ERECTION DETAIL FOR WALL PANEL FASTENER LOCATIONS

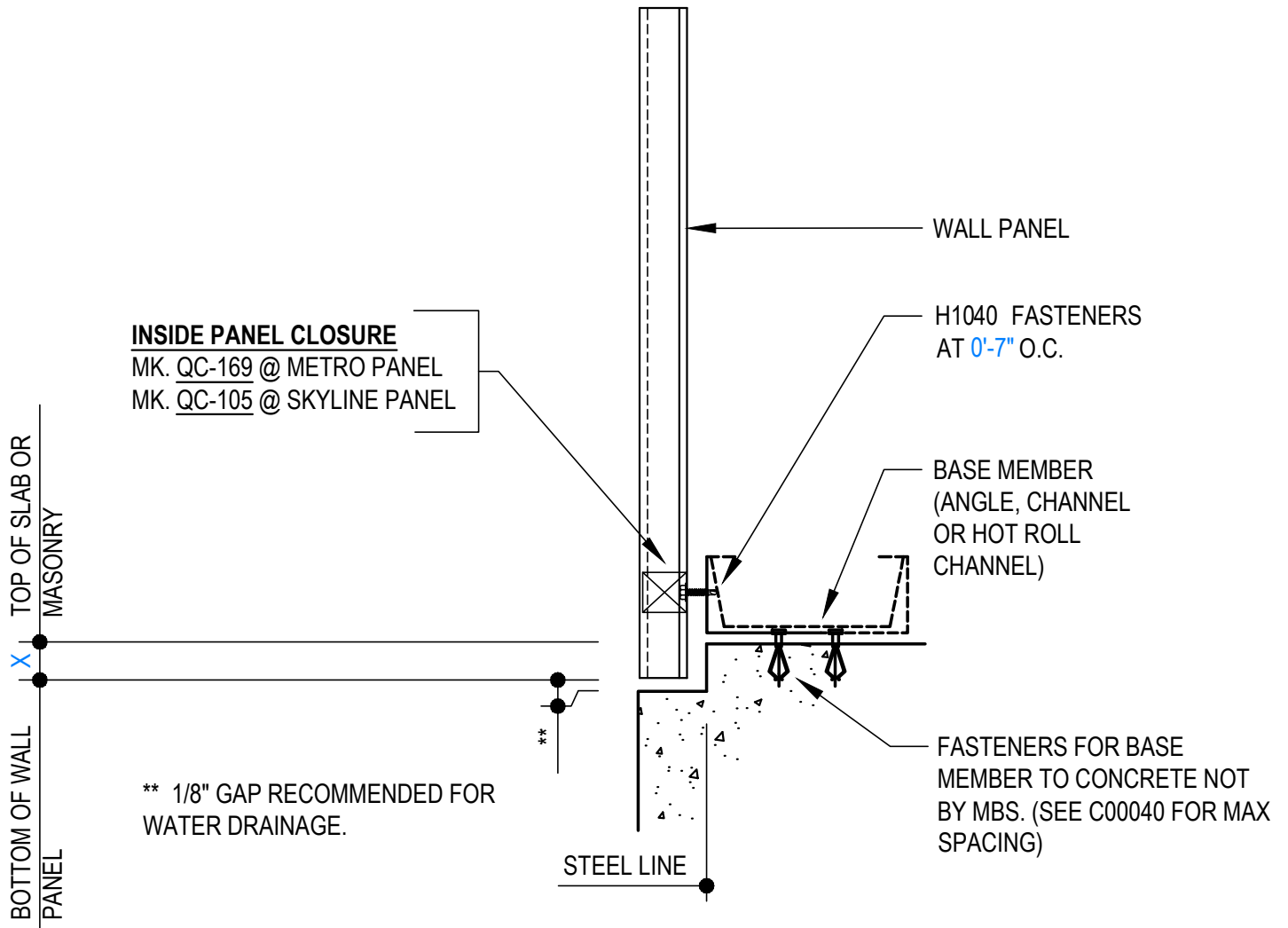
**GB3155**

Detailer Notes:

- 1) IF CLOSURES ARE ORDERED AT WALL PANEL BASE CONDITION, CLOSURE LAYER MUST BE TURNED ON.

GB3200 - CONCRETE NOTCH BASE DETAIL

[Download the DWG file by clicking here.](#)



**CONCRETE NOTCH BASE DETAIL**

SEE WALL SHEETING ERECTION DETAIL FOR WALL PANEL FASTENER LOCATIONS

**GB3200**

Detailer Notes:

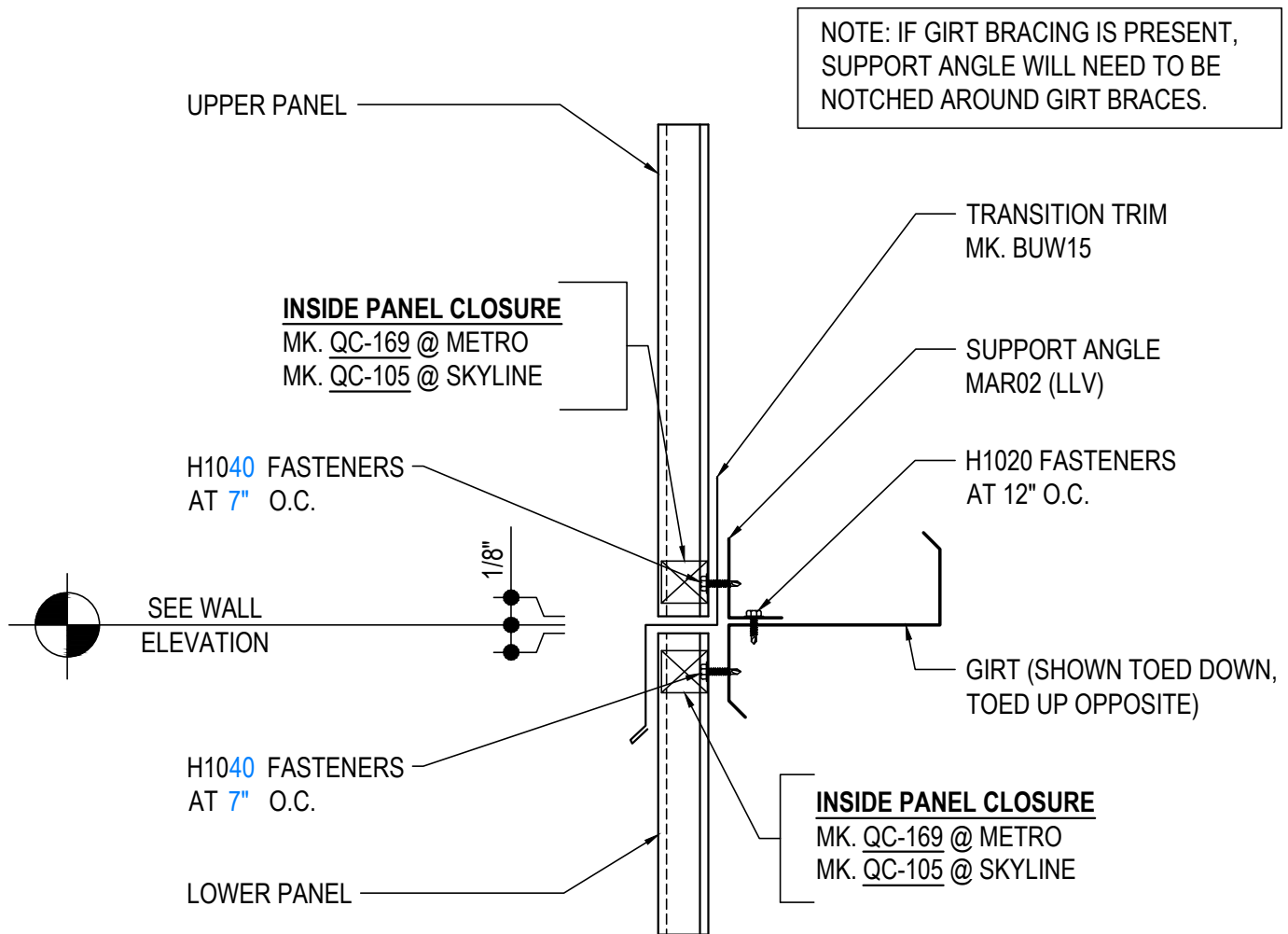
- 1) IF CLOSURES ARE ORDERED AT WALL PANEL BASE CONDITION, CLOSURE LAYER MUST BE TURNED ON.

GB3300 - WAINSCOT TRANSITION DETAIL - ZEE

[Download the DWG file by clicking here.](#)

ERECTOR NOTE:

AFTER LOWER PANELS ARE INSTALLED, (3) H1040 SCREWS ARE TO BE USED FOR TEMPORARY INSTALLATION OF THE TRANSITION TRIM.



**WAINSCOT TRANSITION DETAIL**

SEE WALL SHEETING ERECTION DETAIL FOR  
WALL PANEL FASTENER LOCATIONS

**GB3300**

Detailer Notes:

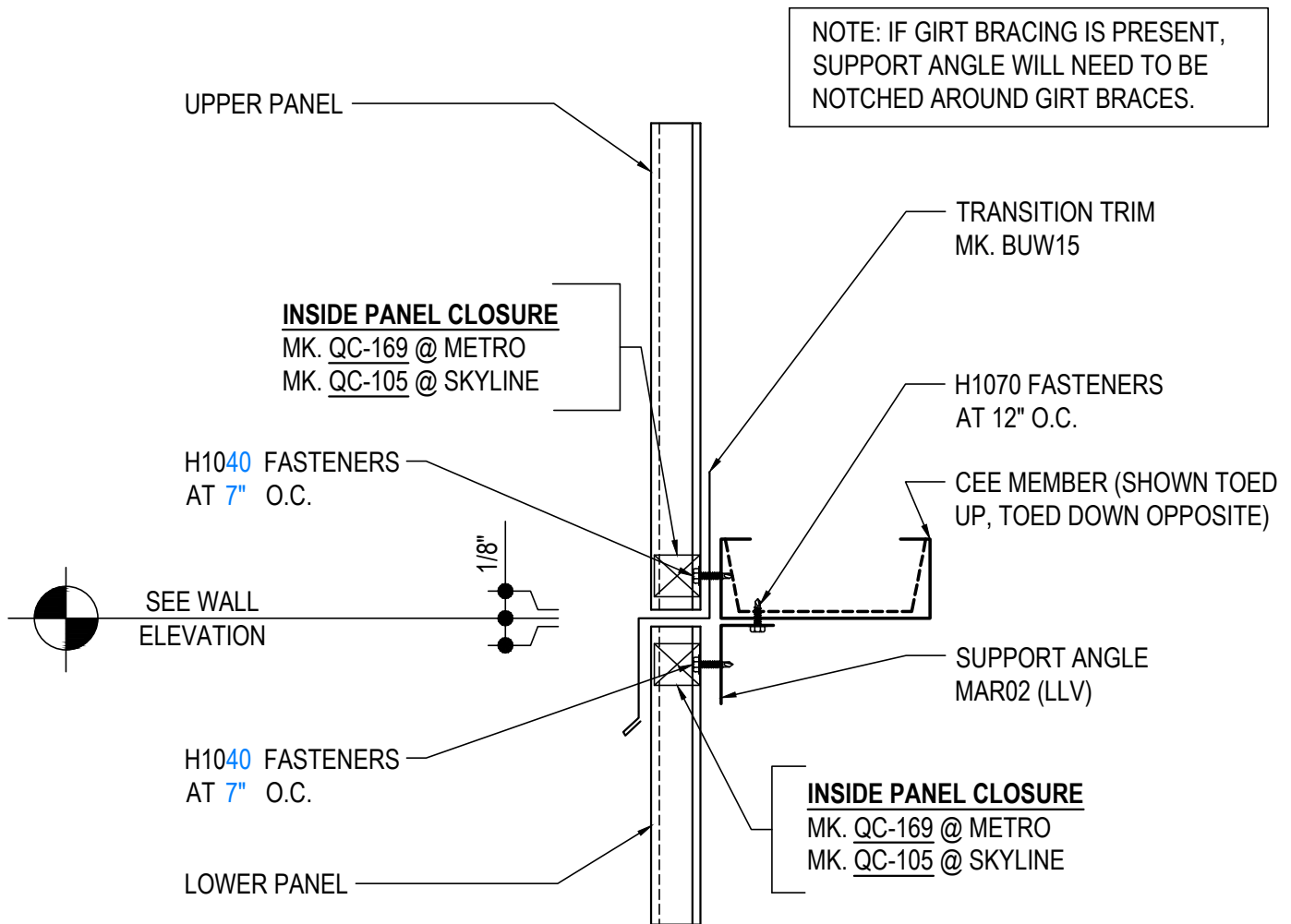
- 1) IF CLOSURES ARE ORDERED AT WALL PANEL BASE CONDITION, YOU MUST TURN ON THE CLOSURE LAYER.
- 2) TRANSITION TRIM COLOR SHOULD EITHER MATCH THE LOWER PANEL COLOR OR BE A COMPLETELY UNIQUE COLOR.
- 3) **NOTE:** WHEN USING TWO DIFFERENT PANEL PROFILES, THE TOP AND BOTTOM MUST HAVE IDENTICAL START AND FINISH TRIMS. AN ALTERNATE CORNER TRIM MAY BE REQUIRED.

GB3310 - WAINSCOT TRANSITION DETAIL - CHANNEL

[Download the DWG file by clicking here.](#)

ERECTOR NOTE:

AFTER LOWER PANELS ARE INSTALLED, (3) H1040 SCREWS ARE TO BE USED FOR TEMPORARY INSTALLATION OF THE TRANSITION TRIM.



**WAINSCOT TRANSITION DETAIL**

SEE WALL SHEETING ERECTION DETAIL FOR WALL PANEL FASTENER LOCATIONS

**GB3310**

Detailer Notes:

- 1) IF CLOSURES ARE ORDERED AT WALL PANEL BASE CONDITION, YOU MUST TURN ON THE CLOSURE LAYER.
- 2) TRANSITION TRIM COLOR SHOULD EITHER MATCH THE LOWER PANEL COLOR OR BE A COMPLETELY UNIQUE COLOR.
- 3) **NOTE:** WHEN USING TWO DIFFERENT PANEL PROFILES, THE TOP AND BOTTOM MUST HAVE IDENTICAL START AND FINISH TRIMS. AN ALTERNATE CORNER TRIM MAY BE REQUIRED.