

BASE CONDITIONS

GB4100 - BASE TRIM AT BASE ANGLE

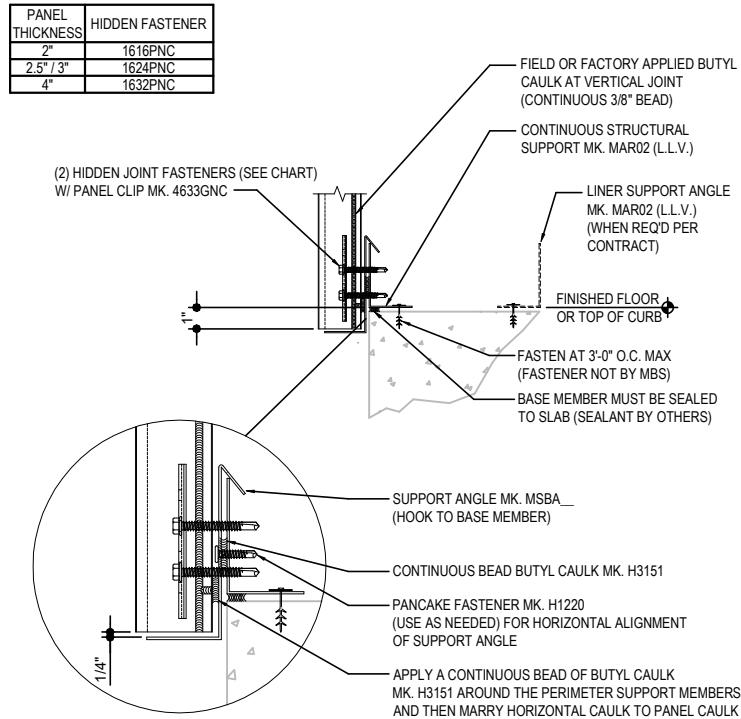
GB4110 - BASE TRIM AT BASE CHANNEL

GB4200 - BASE TRIM AT CONCRETE NOTCH WITH BASE ANGLE

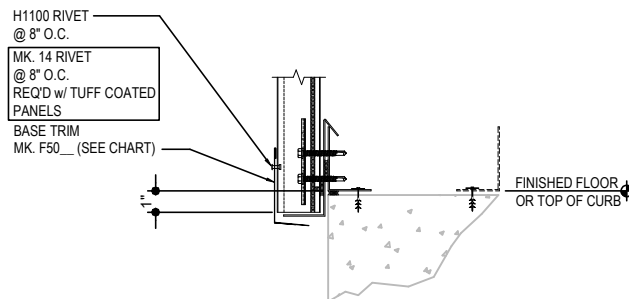
GB4210 - BASE TRIM AT CONCRETE NOTCH WITH BASE CHANNEL

GB4100 - BASE TRIM AT BASE ANGLE

[Download the DWG file by clicking here.](#)



| PANEL THICKNESS | BASE TRIM |
|-----------------|-----------|
| 2" | F5076 |
| 2.5" | F5077 |
| 3" | F5079 |
| 4" | F5080 |



BASE TRIM DETAIL
BASE TRIM WITH BASE ANGLE

GB4100

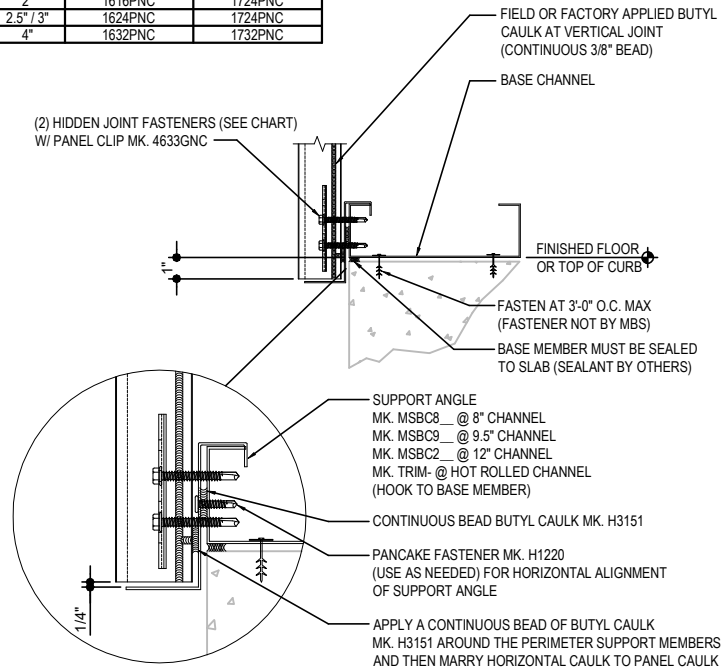
Detailer Notes:

1) N/A

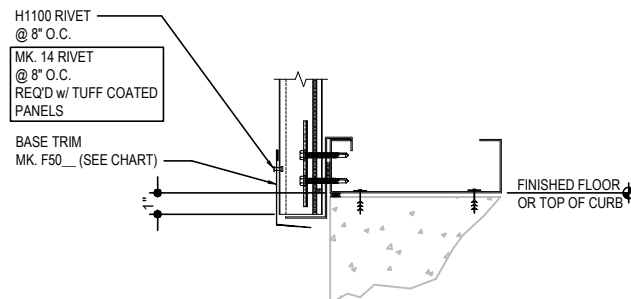
GB4110 - BASE TRIM AT BASE CHANNEL

[Download the DWG file by clicking here.](#)

| PANEL THICKNESS | COLD FORM HIDDEN FASTENER | HOT ROLLED HIDDEN FASTENER |
|-----------------|---------------------------|----------------------------|
| 2" | 1616PNC | 1724PNC |
| 2.5" / 3" | 1624PNC | 1724PNC |
| 4" | 1632PNC | 1732PNC |



| PANEL THICKNESS | BASE TRIM |
|-----------------|-----------|
| 2" | F5076 |
| 2.5" | F5077 |
| 3" | F5079 |
| 4" | F5080 |



BASE TRIM DETAIL

BASE TRIM WITH BASE CHANNEL

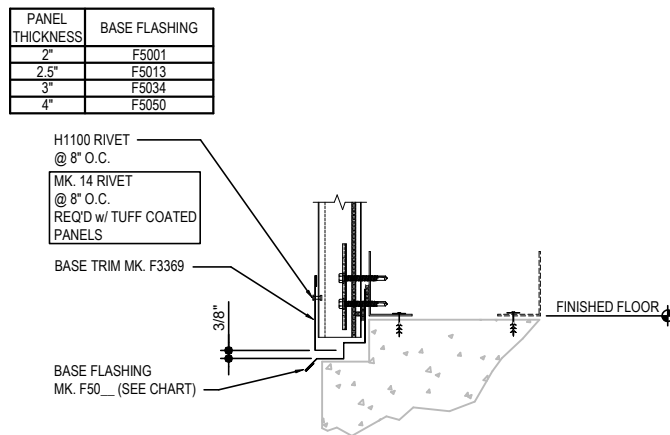
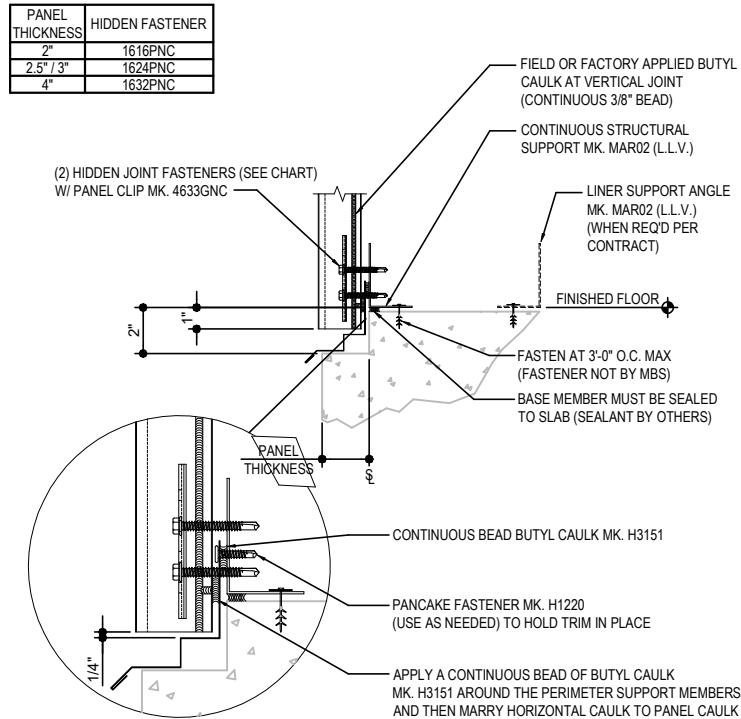
GB4110

Detailer Notes:

1) N/A

GB4200 - BASE TRIM AT CONCRETE NOTCH WITH BASE ANGLE

[Download the DWG file by clicking here.](#)



BASE TRIM DETAIL

BASE TRIM WITH BASE ANGLE AT CONCRETE NOTCH

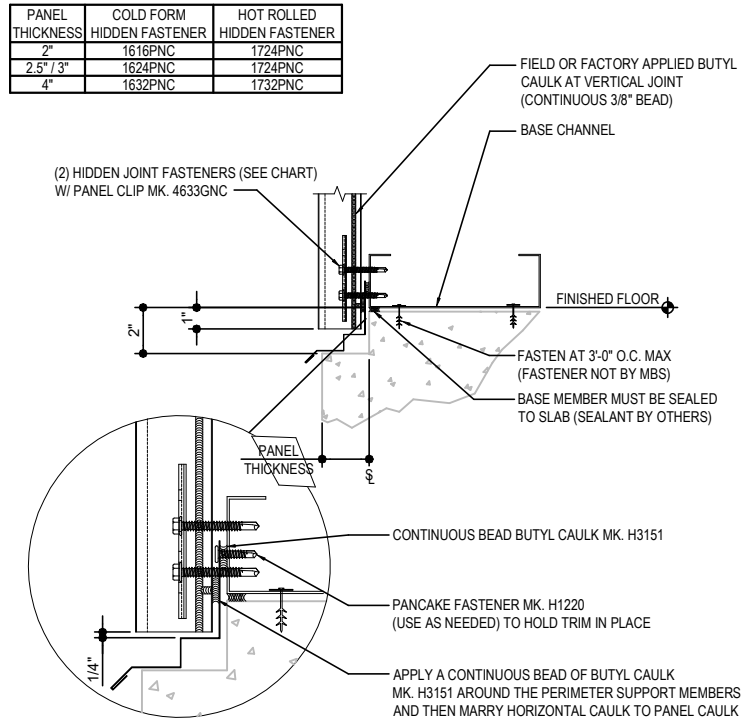
GB4200

Detailer Notes:

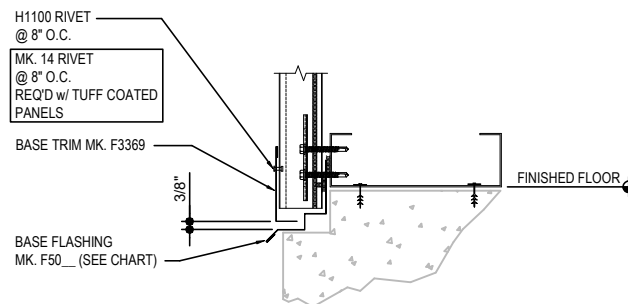
1) N/A

GB4210 - BASE TRIM AT CONCRETE NOTCH WITH BASE CHANNEL

[Download the DWG file by clicking here.](#)



| PANEL THICKNESS | BASE FLASHING |
|-----------------|---------------|
| 2" | F5001 |
| 2.5" | F5013 |
| 3" | F5034 |
| 4" | F5050 |



BASE TRIM DETAIL

BASE TRIM WITH BASE CHANNEL AT CONCRETE NOTCH

GB4210

Detailer Notes:

1) N/A