

## CORNER CONDITIONS

GC4100 - OUTSIDE CORNER

GC4200 - INSIDE CORNER

GC4300 - PANEL TERMINATION AT MASONRY / EXISTING WALL

## GC4100 - OUTSIDE CORNER

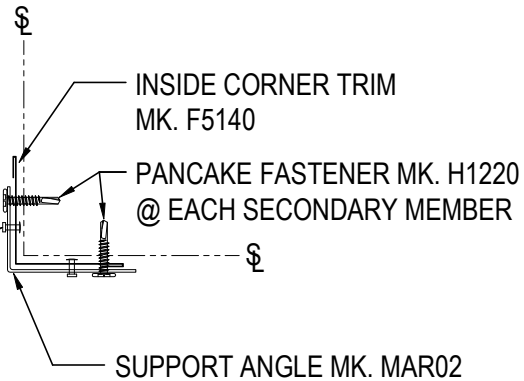
[Download the DWG file by clicking here.](#)

PRIOR TO PANEL ATTACHMENT, COMBINE SUPPORT ANGLE AND INSIDE CORNER TRIM.

THEN ATTACH THE COMBINED PARTS TO THE SECONDARY MEMBERS AT STEEL LINE

PANEL THICKNESS	OUTSIDE TRIM
2"	F5102
2.5"	F5103
3"	F5104
4"	F5101

H1100 RIVET  
EACH END TYP.



H1100 RIVET  
@ 8" O.C.

MK. 14 RIVET  
@ 8" O.C.  
REQ'D w/ TUFF COATED  
PANELS

APPLY A CONTINUOUS  
BEAD OF BUTYL TUBE  
CAULK MK. H3151 (TYP)

FILL VOID WITH SPRAY  
IN PLACE INSULATION  
(NOT BY MBS)

OUTSIDE CORNER TRIM  
MK. F510\_ (SEE CHART)

APPLY A CONTINUOUS BEAD OF  
BUTYL TUBE CAULK MK. H3151 (TYP)

THROUGH FASTENERS @ EACH  
SECONDARY MEMBER (SEE CHART)

PANEL THICKNESS	THROUGH FASTENER
2"	1424PNC
2.5" / 3"	1432PNC
4"	1440PNC
PRE-DRILL REQUIRED AT HOT-ROLLED SECONDARY	

## OUTSIDE CORNER

INSULATED METAL PANEL OUTSIDE CORNER

**GC4100**

### Detailer Notes:

1) N/A

GC4200 - INSIDE CORNER

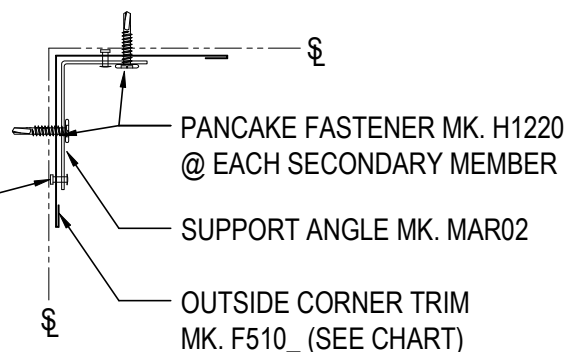
[Download the DWG file by clicking here.](#)

PRIOR TO PANEL ATTACHMENT, COMBINE SUPPORT ANGLE AND OUTSIDE CORNER TRIM.

THEN ATTACH THE COMBINED PARTS TO THE SECONDARY MEMBERS AT STEEL LINE

PANEL THICKNESS	OUTSIDE TRIM
2"	F5102
2.5"	F5103
3"	F5104
4"	F5101

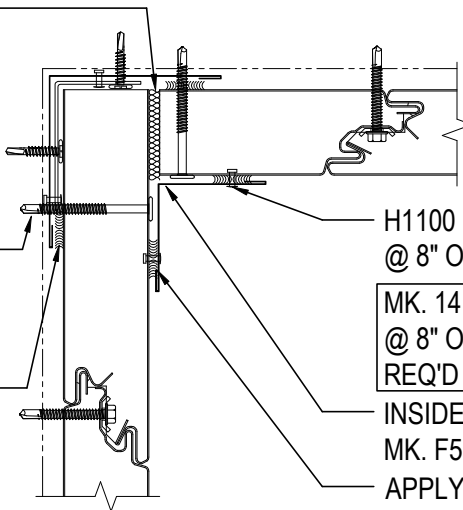
H1100 RIVET  
EACH END TYP.



FILL VOID WITH SPRAY IN PLACE INSULATION  
(NOT BY MBS)

THROUGH FASTENERS @ EACH  
SECONDARY MEMBER (SEE CHART)

APPLY A CONTINUOUS BEAD OF  
BUTYL TUBE CAULK MK. H3151 (TYP)



H1100 RIVET  
@ 8" O.C.

MK. 14 RIVET  
@ 8" O.C.  
REQ'D w/ TUFF COATED PANELS

INSIDE CORNER TRIM  
MK. F5140

APPLY A CONTINUOUS BEAD OF  
BUTYL TUBE CAULK MK. H3151 (TYP)

PANEL THICKNESS	THROUGH FASTENER
2"	1424PNC
2.5" / 3"	1432PNC
4"	1440PNC
PRE-DRILL REQUIRED AT HOT-ROLLED SECONDARY	

## INSIDE CORNER

INSULATED METAL PANEL INSIDE CORNER

**GC4200**

Detailer Notes:

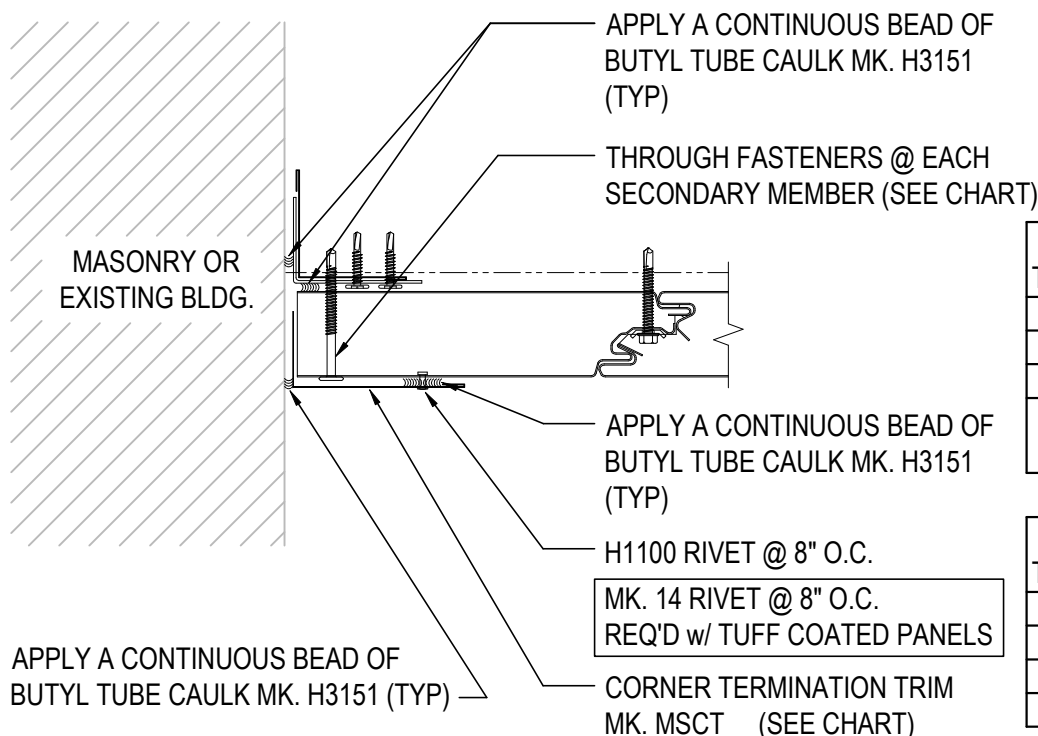
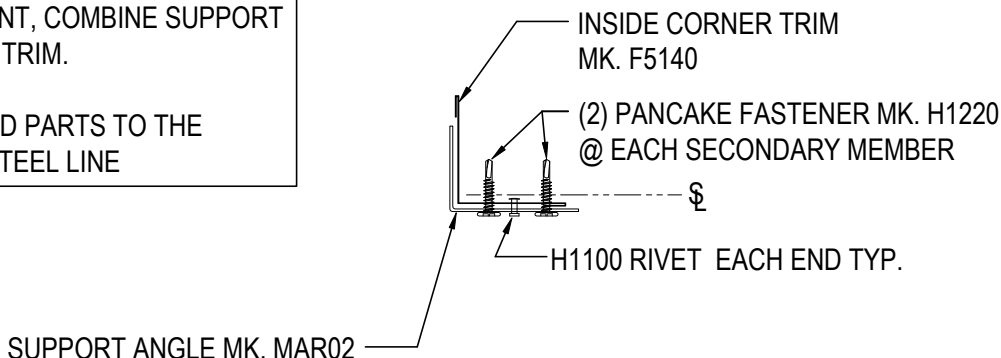
1) N/A

## GC4300 - PANEL TERMINATION AT MASONRY / EXISTING WALL

[Download the DWG file by clicking here.](#)

PRIOR TO PANEL ATTACHMENT, COMBINE SUPPORT ANGLE AND INSIDE CORNER TRIM.

THEN ATTACH THE COMBINED PARTS TO THE SECONDARY MEMBERS AT STEEL LINE



PANEL THICKNESS	THROUGH FASTENER
2"	1424PNC
2.5" / 3"	1432PNC
4"	1440PNC
PRE-DRILL REQUIRED AT HOT-ROLLED SECONDARY	

PANEL THICKNESS	TERMINATION TRIM
2"	MSCT20
2.5"	MSCT25
3"	MSCT30
4"	MSCT40

## PANEL TERMINATION AT MASONRY OR EXISTING BLDG.

INSULATED METAL PANEL TERMINATION

**GC4300**

### Detailer Notes:

1) N/A