

**FRAMED OPENING**

GD4010-FRAMED OPENING MINIMUM PANEL WIDTH

GD4020-GENERAL WALKDOOR DETAIL

GD4100-JAMB DETAIL

GD4110-JAMB DETAIL WITH HOT-ROLLED JAMB

GD4200-HEADER DETAIL

GD4210-HEADER DETAIL WITH HOT-ROLLED HEADER

GD4300-SILL DETAIL

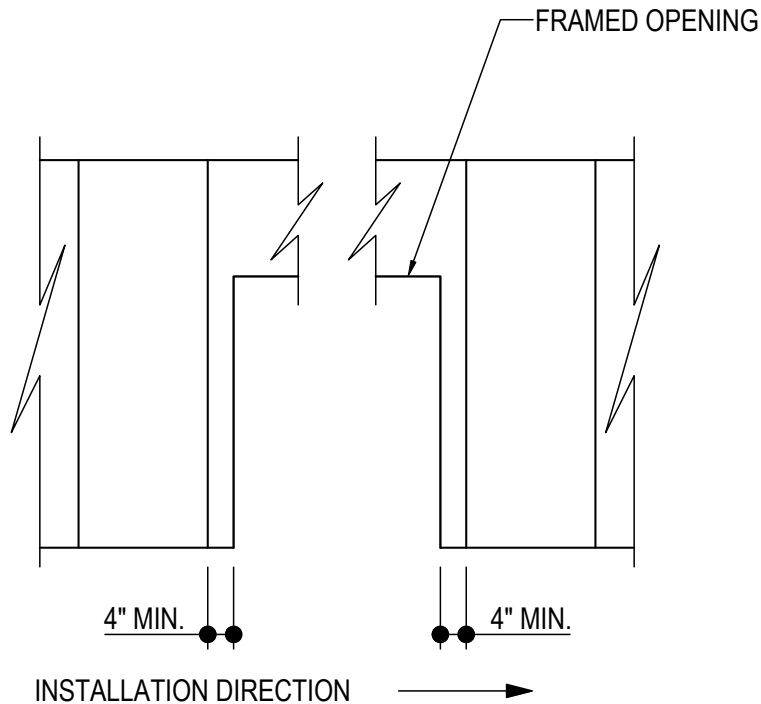
GD4310-SILL DETAIL WITH HOT-ROLLED SILL

GD4400-TRIM CORNER DETAIL

GD4010 - FRAMED OPENING MINIMUM PANEL WIDTH

[Download the DWG file by clicking here.](#)

**ERECTOR NOTE:**  
4" (MINIMUM) DISTANCE  
FROM EDGE OF FIELD-CUT  
PANEL TO JAMB.



**MINIMUM PANEL WIDTH AT F.O. JAMB**

(ELEVATION VIEW)

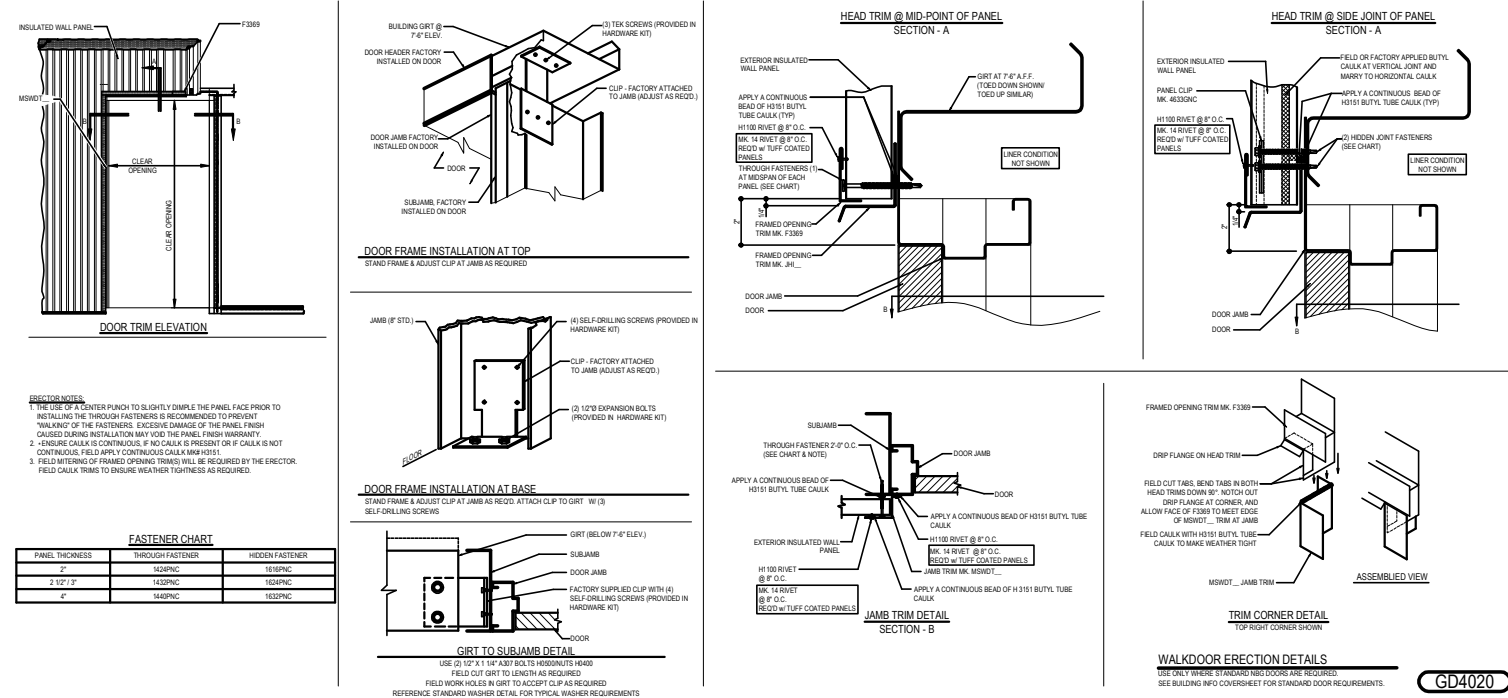
**GD4010**

Detailer Notes:

1) N/A

GD4020 - GENERAL WALKDOOR DETAIL

Download the DWG file by clicking here.



Detailer Notes:

1) N/A

## GD4100 - JAMB DETAIL

[Download the DWG file by clicking here.](#)

PANEL THICKNESS	THROUGH FASTENER
2"	1424PNC
2.5" / 3"	1432PNC
4"	1440PNC

H1100 RIVET @ 2'-0" O.C.

MK. 14 RIVET @ 2'-0" O.C.  
REQ'D w/ TUFF COATED  
PANELS

JAMB

THROUGH FASTENERS  
@ 2'-0" O.C. (SEE CHART)

APPLY A CONTINUOUS  
3/8" BEAD OF MK. H3151  
BUTYL TUBE CAULK (TYP)

APPLY A CONTINUOUS  
3/8" BEAD OF MK. H3151  
BUTYL TUBE CAULK (TYP)

H1100 RIVET @ 8" O.C.

MK. 14 RIVET @ 8" O.C.  
REQ'D w/ TUFF COATED  
PANELS

FRAMED OPENING TRIM  
MK. F539\_ (SEE CHART)

COVER TRIM  
(REFERENCE ERECTION DRAWINGS  
FOR PART NUMBER)

CC8121 @ 8" CEE

CC9121 @ 9.5" CEE

CS8121 @ 8" STRUCTURAL CEE

CS9121 @ 9.5" STRUCTURAL CEE

CS2121 @ 12" STRUCTURAL CEE

WINDOW / LOUVER / DOOR

H1100 RIVET @ 2'-0" O.C.

MK. 14 RIVET @ 2'-0" O.C.  
REQ'D w/ TUFF COATED  
PANELS

APPLY A CONTINUOUS 3/8"  
BEAD OF MK. H3151 BUTYL  
TUBE CAULK (TYP)

PERIMETER SEALANT  
(NOT BY MBS)

PANEL THICKNESS	FRAMED OPENING TRIM
2"	F5390
2.5"	F5392
3"	F5396
4"	F5398

## JAMB TRIM

INSULATED METAL PANEL JAMB TRIM AT COLD FORMED FRAMED OPENING

**GD4100**

### Detailer Notes:

1) N/A

## GD4110 - JAMB DETAIL WITH HOT-ROLLED JAMB

[Download the DWG file by clicking here.](#)

WALL PANEL THICKNESS	THROUGH FASTENER
2"	1424PNC
2.5" / 3"	1432PNC
4"	1440PNC

H1070 FASTENER  
@ 2'-0" O.C.

MK. 17 FASTENER  
@ 8" O.C. REQ'D w/ TUFF COATED  
PANELS

JAMB

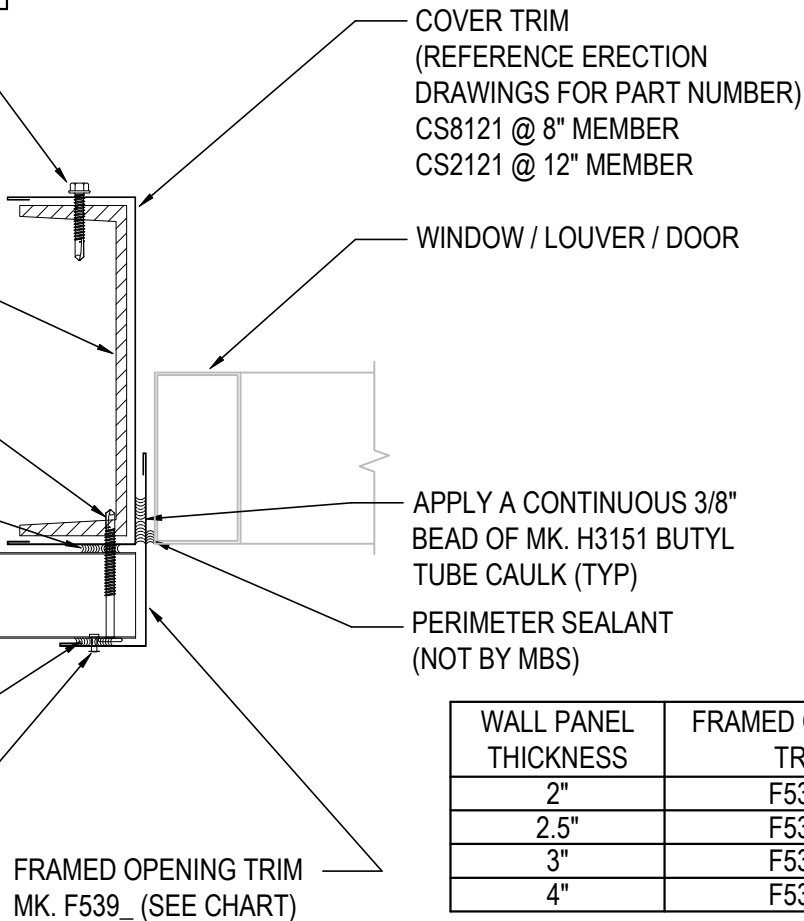
THROUGH FASTENERS  
@ 2'-0" O.C. (SEE CHART)  
(PRE-DRILL REQUIRED)

APPLY A CONTINUOUS  
3/8" BEAD OF MK. H3151  
BUTYL TUBE CAULK (TYP)

APPLY A CONTINUOUS  
3/8" BEAD OF MK. H3151  
BUTYL TUBE CAULK (TYP)

H1100 RIVET  
@ 8" O.C.

MK. 14 RIVET  
@ 8" O.C.  
REQ'D w/ TUFF COATED PANELS



WALL PANEL THICKNESS	FRAMED OPENING TRIM
2"	F5390
2.5"	F5392
3"	F5396
4"	F5398

## JAMB TRIM WITH HOT-ROLLED JAMB

INSULATED METAL PANEL JAMB TRIM AT HOT ROLLED FRAMED OPENING

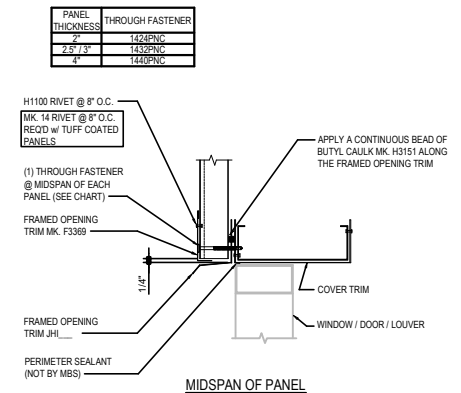
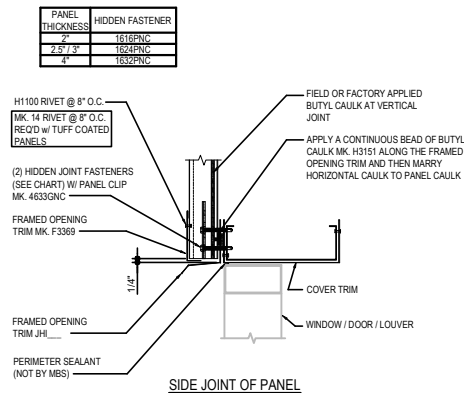
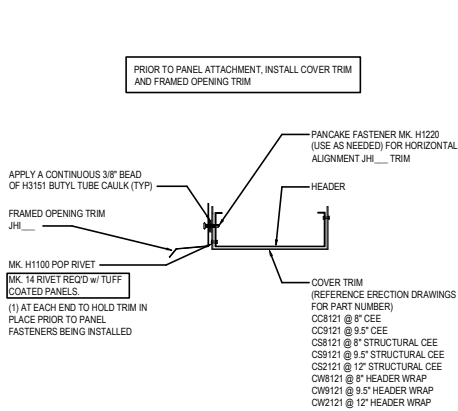
**GD4110**

### Detailer Notes:

1) N/A

## GD4200 - HEADER DETAIL

[Download the DWG file by clicking here.](#)



## HEAD TRIM WITH COLD FORM HEADER

GD4200

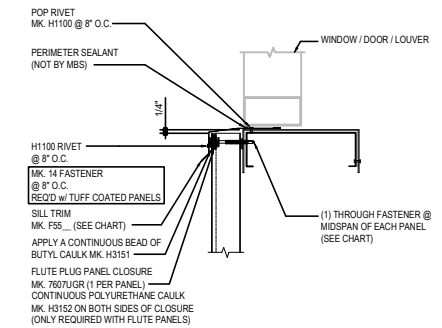
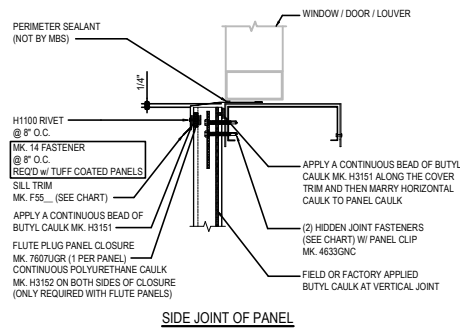
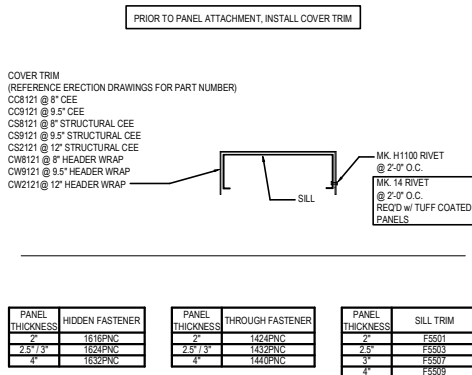
## Detailer Notes:

1) N/A



## GD4300 - SILL DETAIL

[Download the DWG file by clicking here.](#)



SILL TRIM

INSULATED WALL PANEL FRAMED OPENING SILL TRIM

MIDSPAN OF PANEL

GD4300

## Detailer Notes:

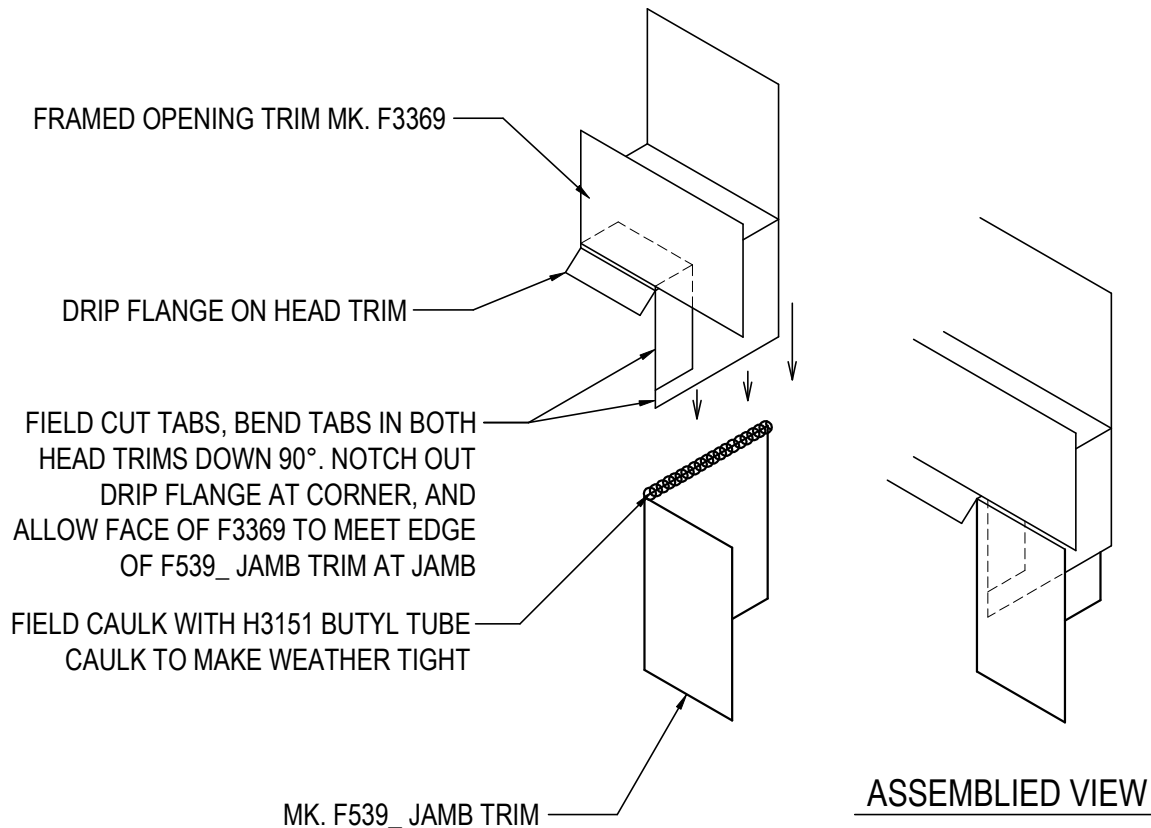
1) N/A





GD4400 - TRIM CORNER DETAIL

[Download the DWG file by clicking here.](#)



## TRIM CORNER DETAIL

TOP RIGHT CORNER SHOWN LEFT SIDE SIMILAR

**GD4400**

Detailer Notes: