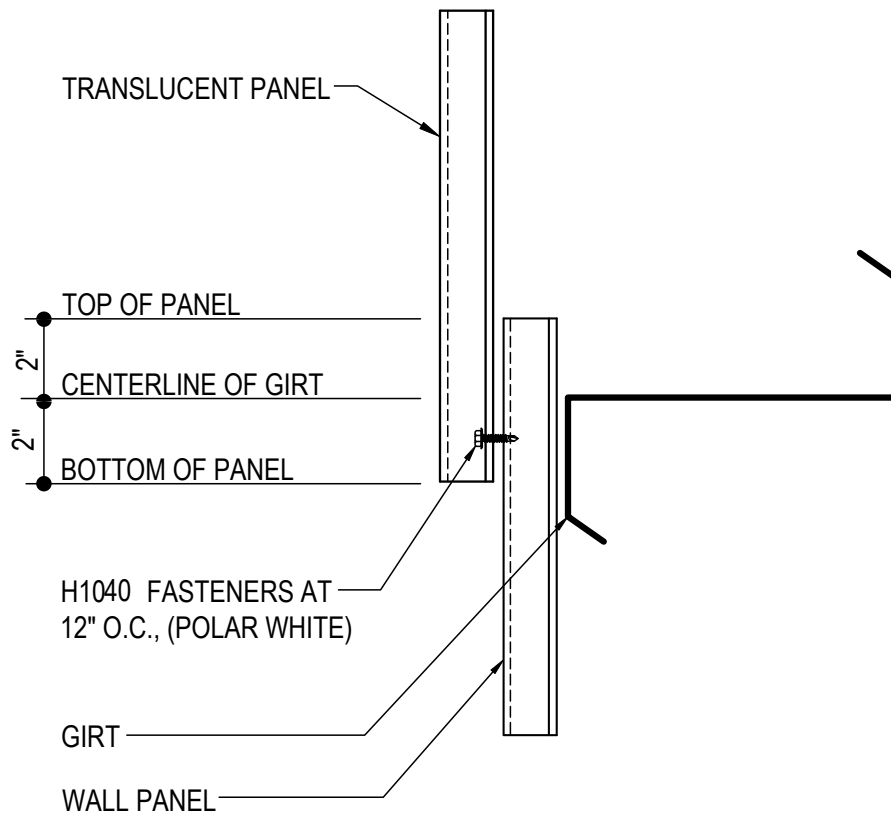


## TRANSLUCENT WALL PANELS

- GE0001 - TRANSLUCENT WALL PANEL LAP - REVERSE R-PANEL & A-PANEL
  - GE0002 - TRANSLUCENT WALL PANEL LAP - R-PANEL
  - GE0010 - TRANSLUCENT WALL PANEL SIDELAP - R-PANEL
  - GE0035 - ALT. OUTSIDE CORNER AT TRANSLUCENT WALL PANEL - R-PANEL
  - GE0040 - TRANSLUCENT WALL PANEL SIDELAP - A-PANEL
  - GE0065 - ALT. OUTSIDE CORNER AT TRANSLUCENT WALL PANEL - A-PANEL
  - GE0070 - TRANSLUCENT WALL PANEL SIDELAP - REV R-PANEL
  - GE0095 - ALT. OUTSIDE CORNER AT TRANSLUCENT WALL PANEL - REV R-PANEL
  - GE0100 - LOW EAVE WITH TRANSLUCENT WALL PANEL
  - GE0110 - RAKE WITH TRANSLUCENT WALL PANEL
  - GE0120 - HIGH EAVE WITH TRANSLUCENT WALL PANEL
-

GE0001 - TRANSLUCENT WALL PANEL LAP DETAIL - REVERSE R-PANEL & A-PANEL

[Download the DWG file by clicking here.](#)



## TRANSLUCENT PANEL LAP

TRANSLUCENT PANEL TO METAL PANEL

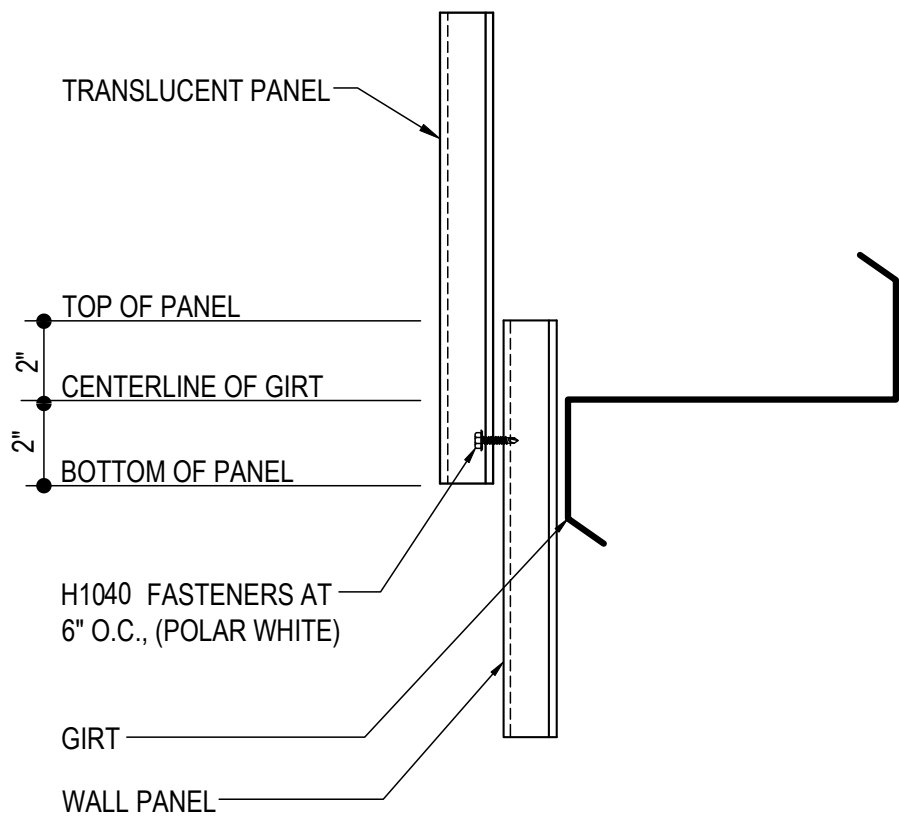
**GE0001**

Detailer Notes:

- 1) N/A

GE0002 - TRANSLUCENT WALL PANEL LAP DETAIL - R-PANEL

[Download the DWG file by clicking here.](#)



**TRANSLUCENT PANEL LAP**

TRANSLUCENT PANEL TO METAL PANEL

**GE0002**

Detailer Notes:

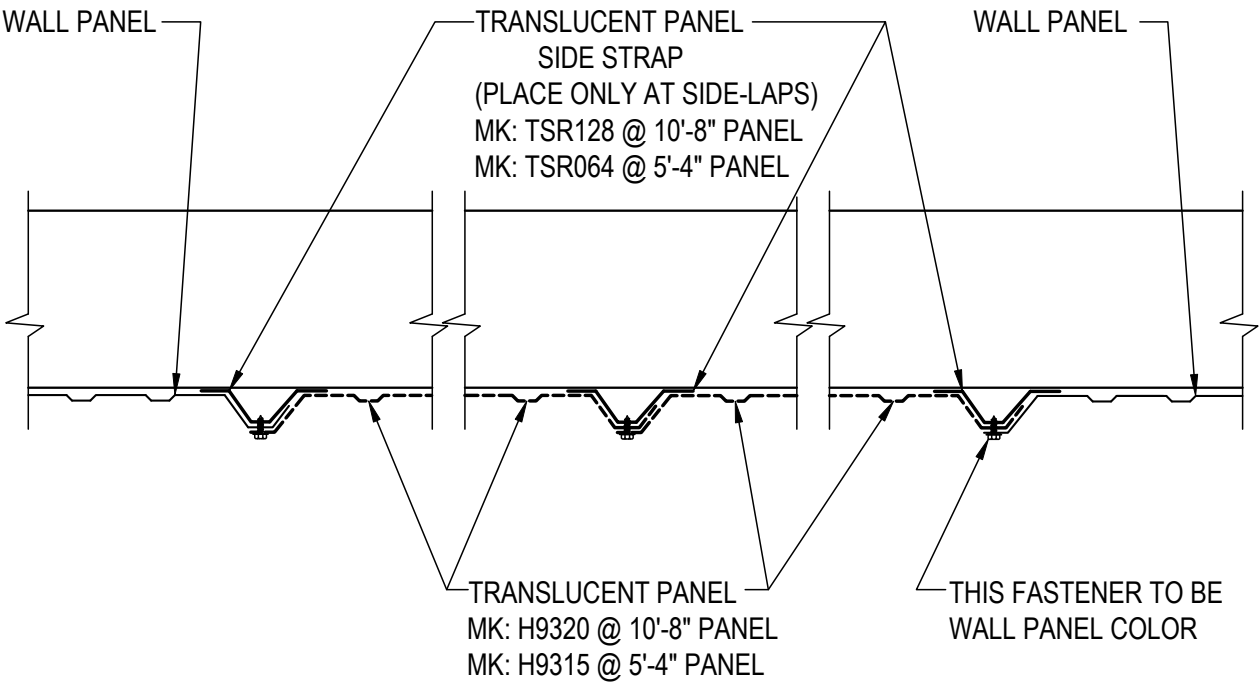
- 1) N/A

GE0010 - TRANSLUCENT WALL PANEL SIDELAP DETAIL - R-PANEL

[Download the DWG file by clicking here.](#)

**FASTENER REQUIREMENTS**

FASTEN TO GIRTS @ MID-SPAN W/ H1040 AT 12" O.C.	FASTEN SIDELAPS W/H1060 AT 30" O.C. MAX.
FASTEN ENDLAPS W/H1040 AT 6" O.C.	FASTEN @ EAVE & RAKE W/ H1040 AT 12" O.C.



**TRANSLUCENT PANEL SIDELAP DETAIL**

TRANSLUCENT PANEL FASTENERS ARE POLAR WHITE

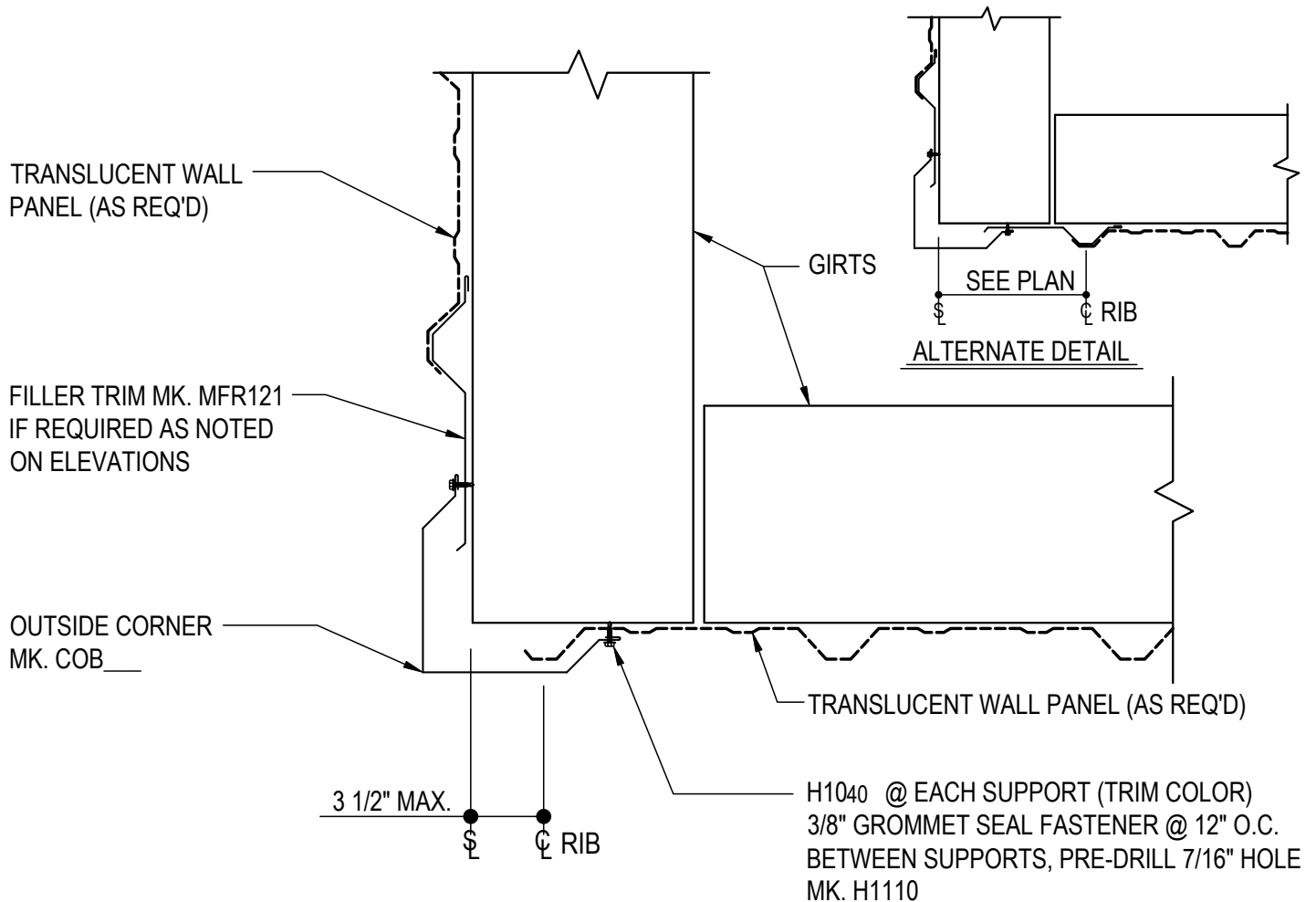
**GE0010**

Detailer Notes:

1) N/A

GE0035 - ALT. OUTSIDE CORNER AT TRANSLUCENT WALL PANEL - R-PANEL

[Download the DWG file by clicking here.](#)



## ALT. OUTSIDE CORNER DETAIL

TRANSLUCENT WALL PANEL

**GE0035**

### Detailer Notes:

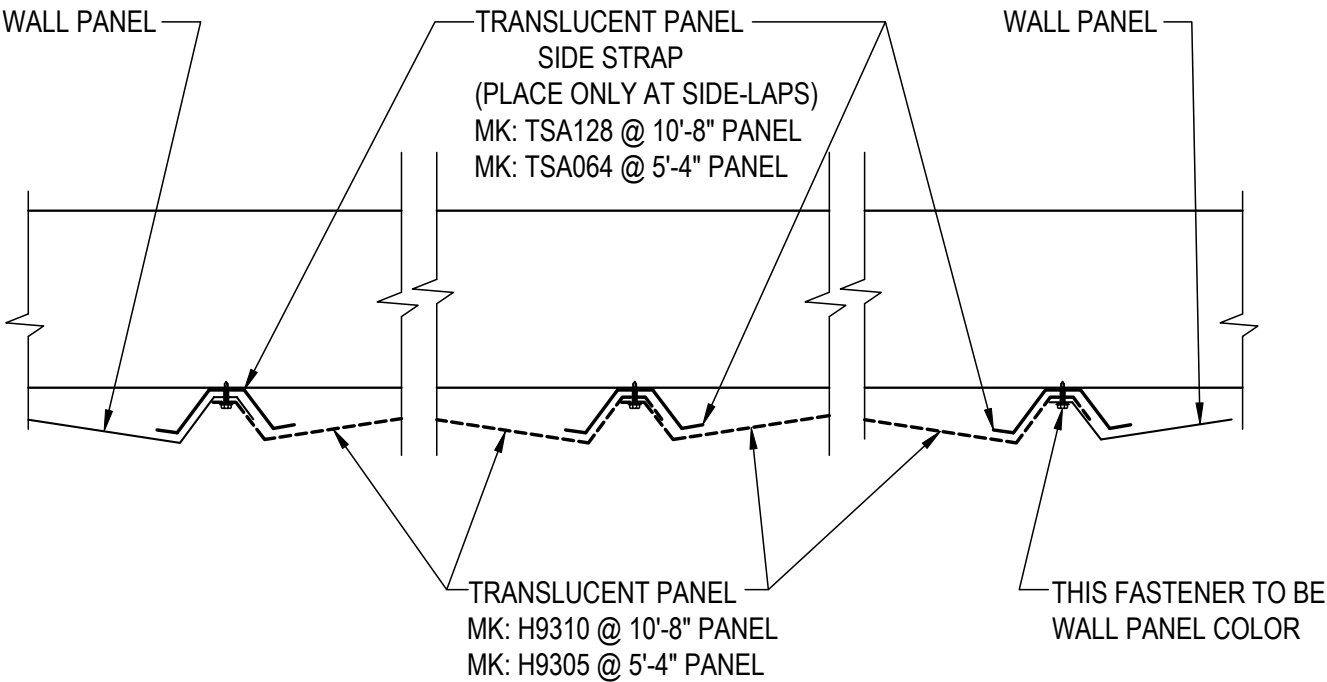
1) N/A

GE0040 - TRANSLUCENT WALL PANEL SIDELAP DETAIL - A-PANEL

[Download the DWG file by clicking here.](#)

FASTENER REQUIREMENTS

FASTEN TO GIRTS @ MID-SPAN W/ H1040 AT 12" O.C.	FASTEN SIDELAPS W/H1060 AT 30" O.C. MAX.
FASTEN ENDLAPS W/H1040 AT 6" O.C.	FASTEN @ EAVE & RAKE W/ H1040 AT 12" O.C.



TRANSLUCENT PANEL SIDELAP DETAIL

TRANSLUCENT PANEL FASTENERS ARE POLAR WHITE

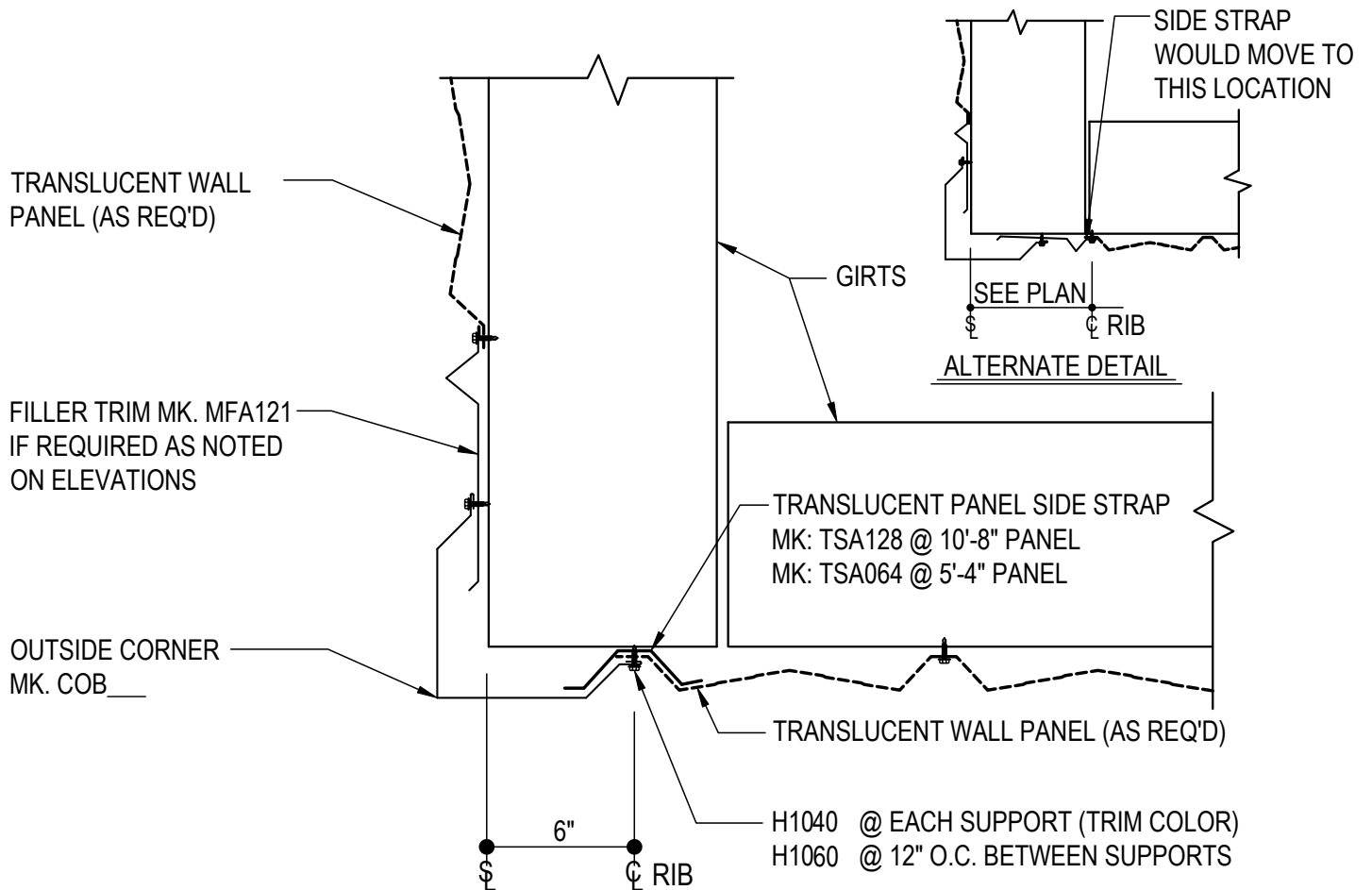
GE0040

Detailer Notes:

- 1) N/A

GE0065 - ALT. OUTSIDE CORNER AT TRANSLUCENT WALL PANEL - A-PANEL

[Download the DWG file by clicking here.](#)



## ALT. OUTSIDE CORNER DETAIL

TRANSLUCENT WALL PANEL

**GE0065**

### Detailer Notes:

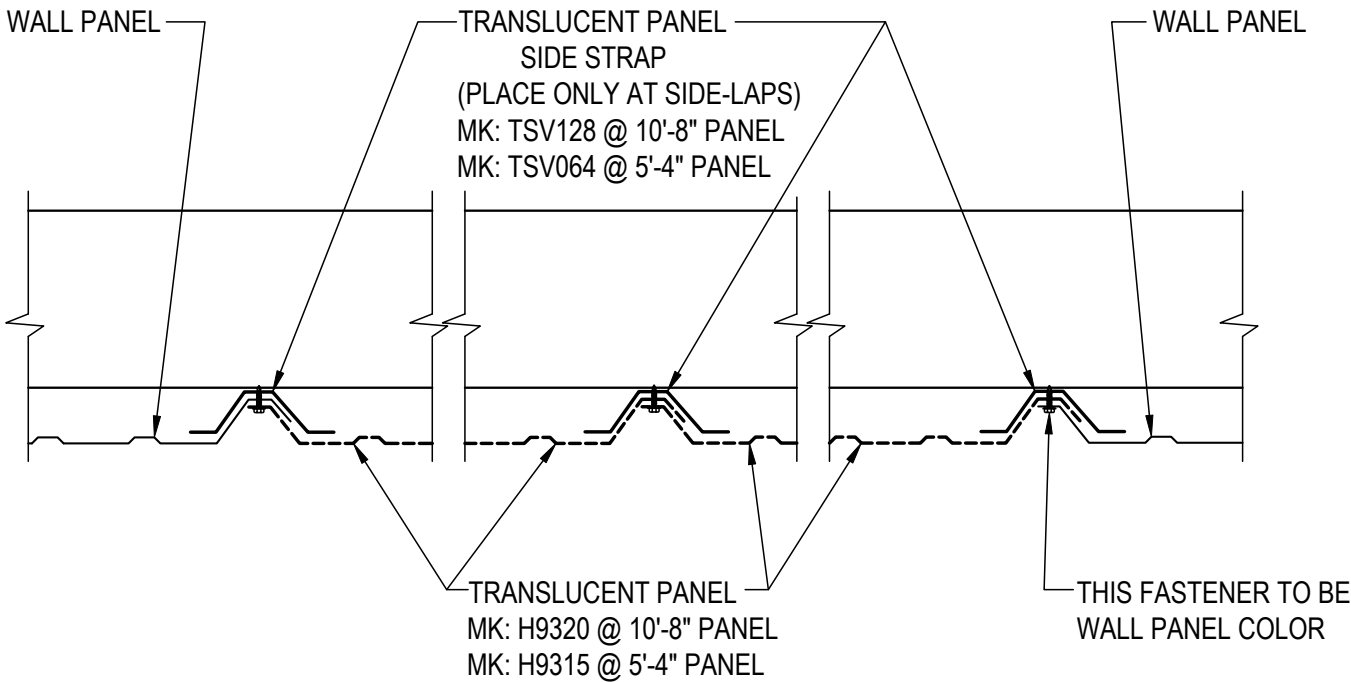
1) N/A

GE0070 - TRANSLUCENT WALL PANEL SIDELAP DETAIL - REVERSE R-PANEL

[Download the DWG file by clicking here.](#)

**FASTENER REQUIREMENTS**

FASTEN TO GIRTS @ MID-SPAN W/ H1040 AT 12" O.C.	FASTEN SIDELAPS W/H1060 AT 30" O.C. MAX.
FASTEN ENDLAPS W/H1040 AT 12" O.C.	FASTEN @ EAVE & RAKE W/ H1040 AT 12" O.C.



**TRANSLUCENT PANEL SIDELAP DETAIL**

TRANSLUCENT PANEL FASTENERS ARE POLAR WHITE

**GE0070**

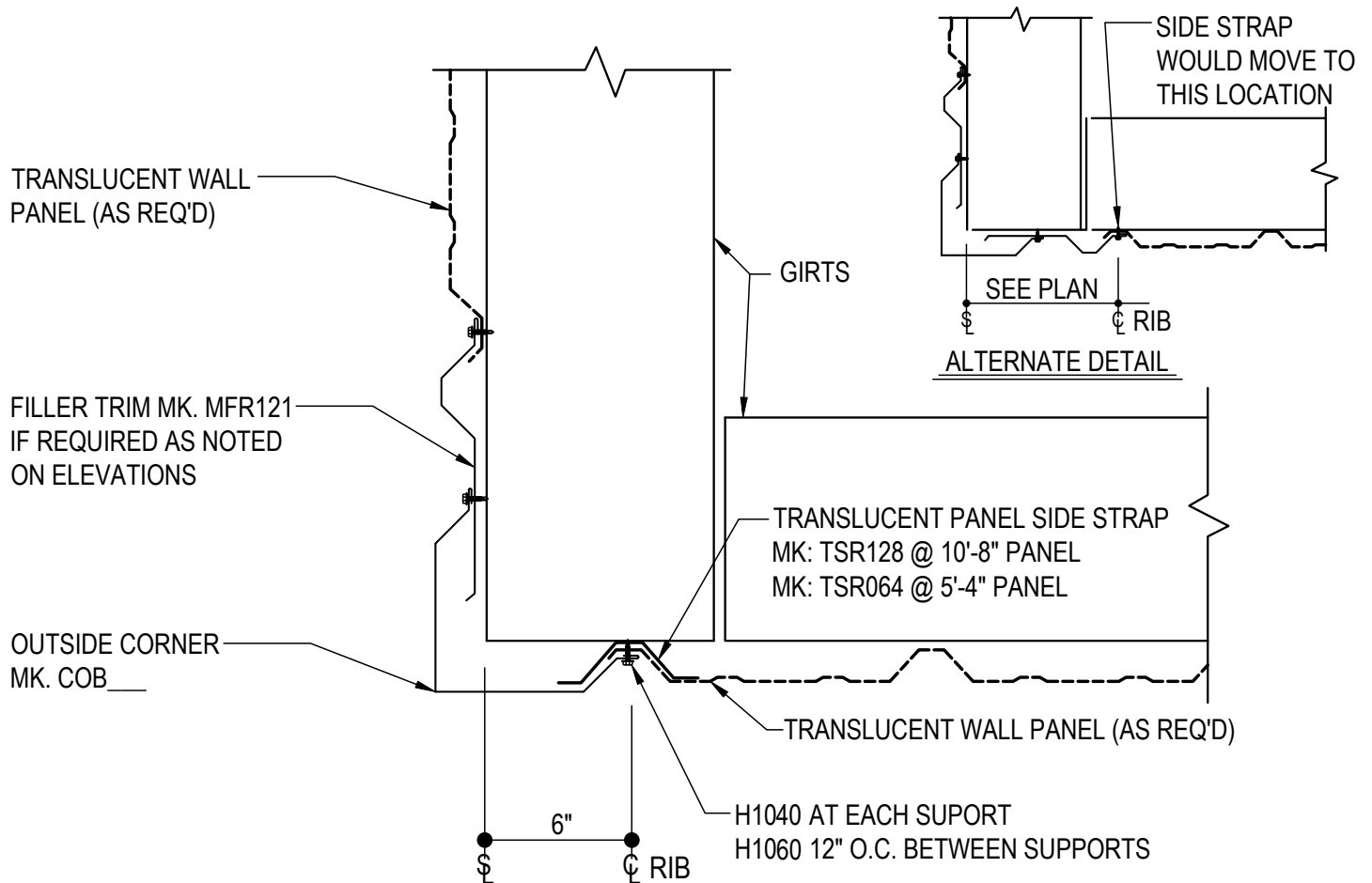
Detailer Notes:

1) N/A



GE0095 - ALT. OUTSIDE CORNER AT TRANSLUCENT WALL PANEL - REVERSE R-PANEL

[Download the DWG file by clicking here.](#)



## ALT. OUTSIDE CORNER DETAIL

TRANSLUCENT WALL PANEL

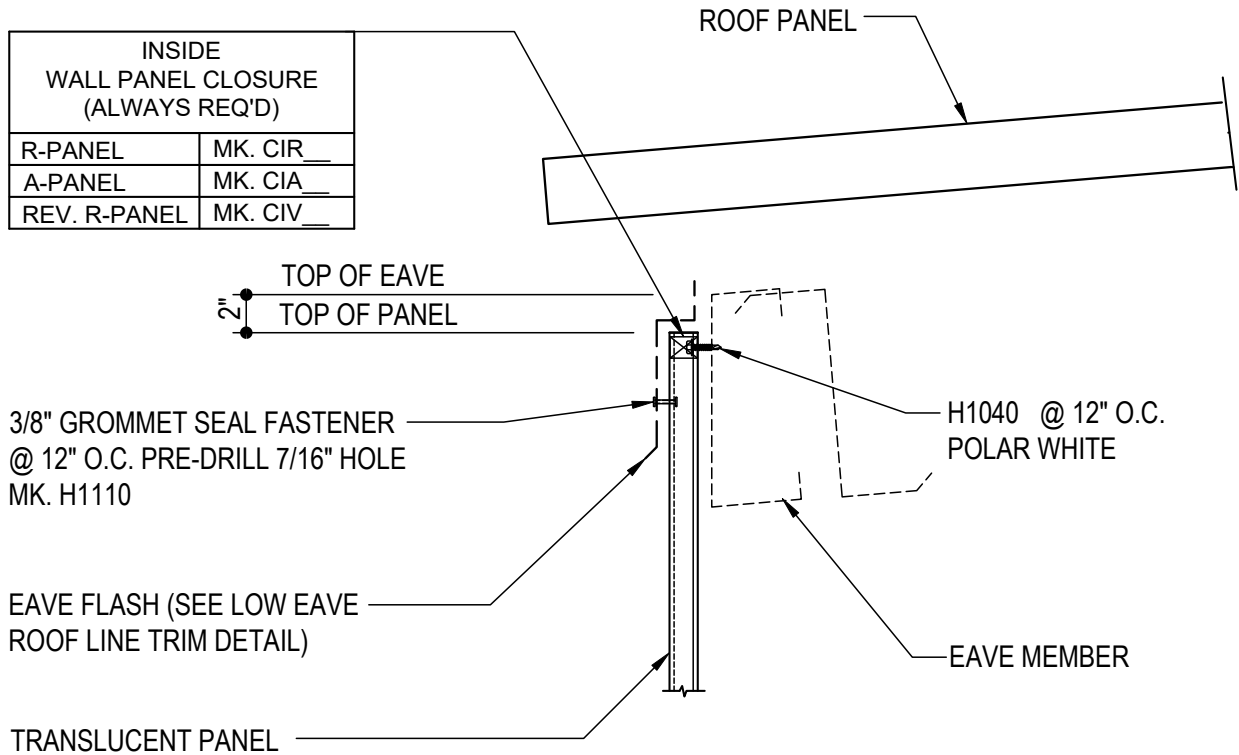
**GE0095**

Detailer Notes:

1) N/A

GE0100 - LOW EAVE WITH TRANSLUCENT WALL PANEL

[Download the DWG file by clicking here.](#)



ERECTOR NOTE:  
REFERENCE TYPICAL LOW EAVE  
DETAIL FOR GUTTER IF REQ'D

## LOW EAVE DETAIL

LOW EAVE @ TRANSLUCENT WALL PANEL

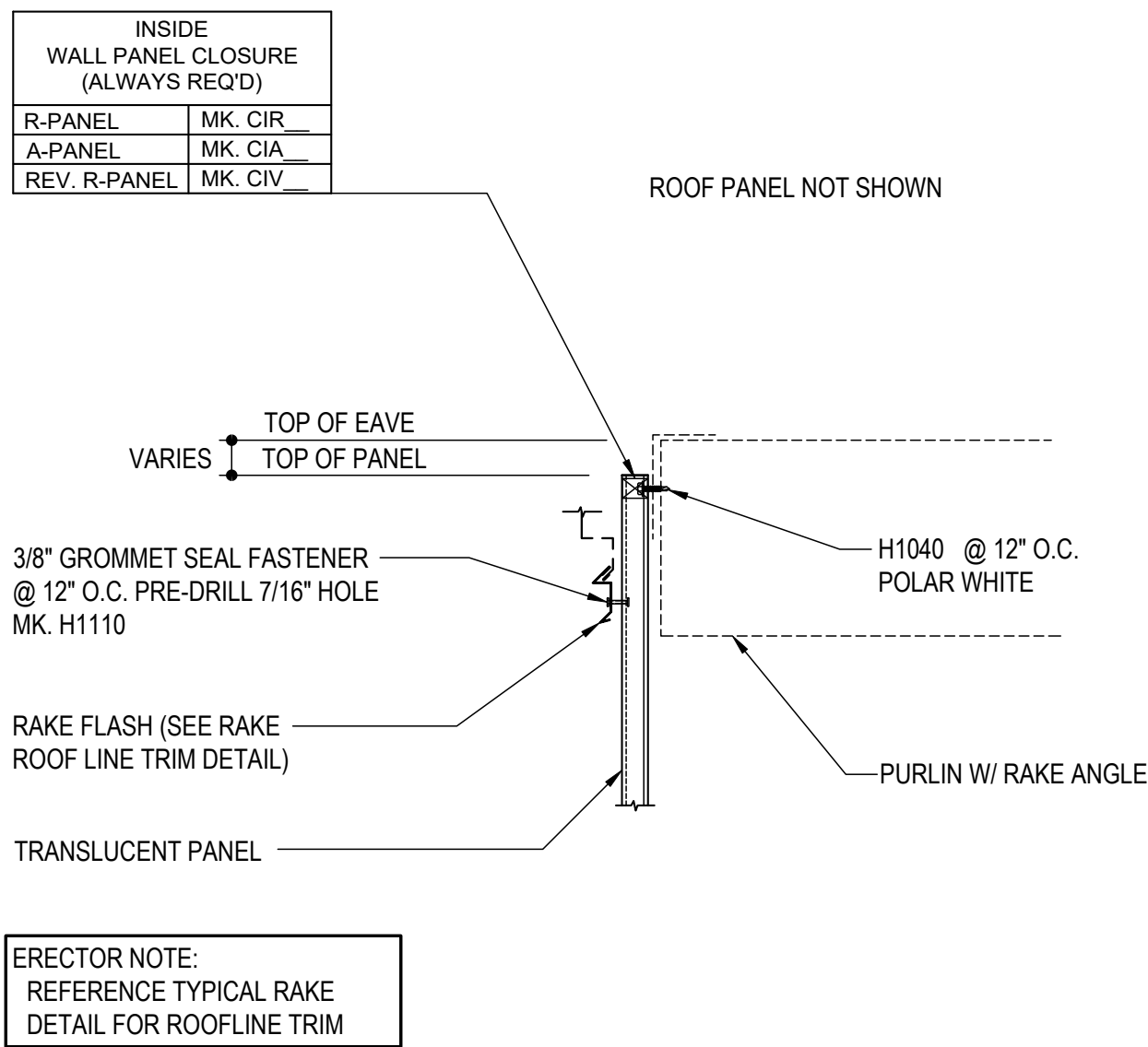
**GE0100**

Detailer Notes:

- 1) THIS DETAIL IS USED FOR ALL STANDARD WALL PANELS.
- 2) INSIDE CLOSURES ARE ALWAYS REQUIRED.
- 3) CLOSURE LOW EAVE LAYER MUST BE TURNED ON IF OUTSIDE CLOSURES ARE REQUIRED.

GE0110 - RAKE WITH TRANSLUCENT WALL PANEL

[Download the DWG file by clicking here.](#)



RAKE DETAIL

RAKE @ TRANSLUCENT WALL PANEL

GE0110

Detailer Notes:

- 1) THIS DETAIL IS USED FOR ALL STANDARD WALL PANELS.
- 2) INSIDE CLOSURES ARE ALWAYS REQUIRED.
- 3) CLOSURE LOW EAVE LAYER MUST BE TURNED ON IF OUTSIDE CLOSURES ARE REQUIRED.

[Download the DWG file by clicking here.](#)



## HIGH EAVE @ TRANSLUCENT WALL PANEL

# GE0120

- 1) THIS DETAIL IS USED FOR ALL STANDARD WALL PANELS.
- 2) INSIDE CLOSURES ARE ALWAYS REQUIRED.
- 3) CLOSURE LOW EAVE LAYER MUST BE TURNED ON IF OUTSIDE CLOSURES ARE REQUIRED.