

FASCIA TRIM

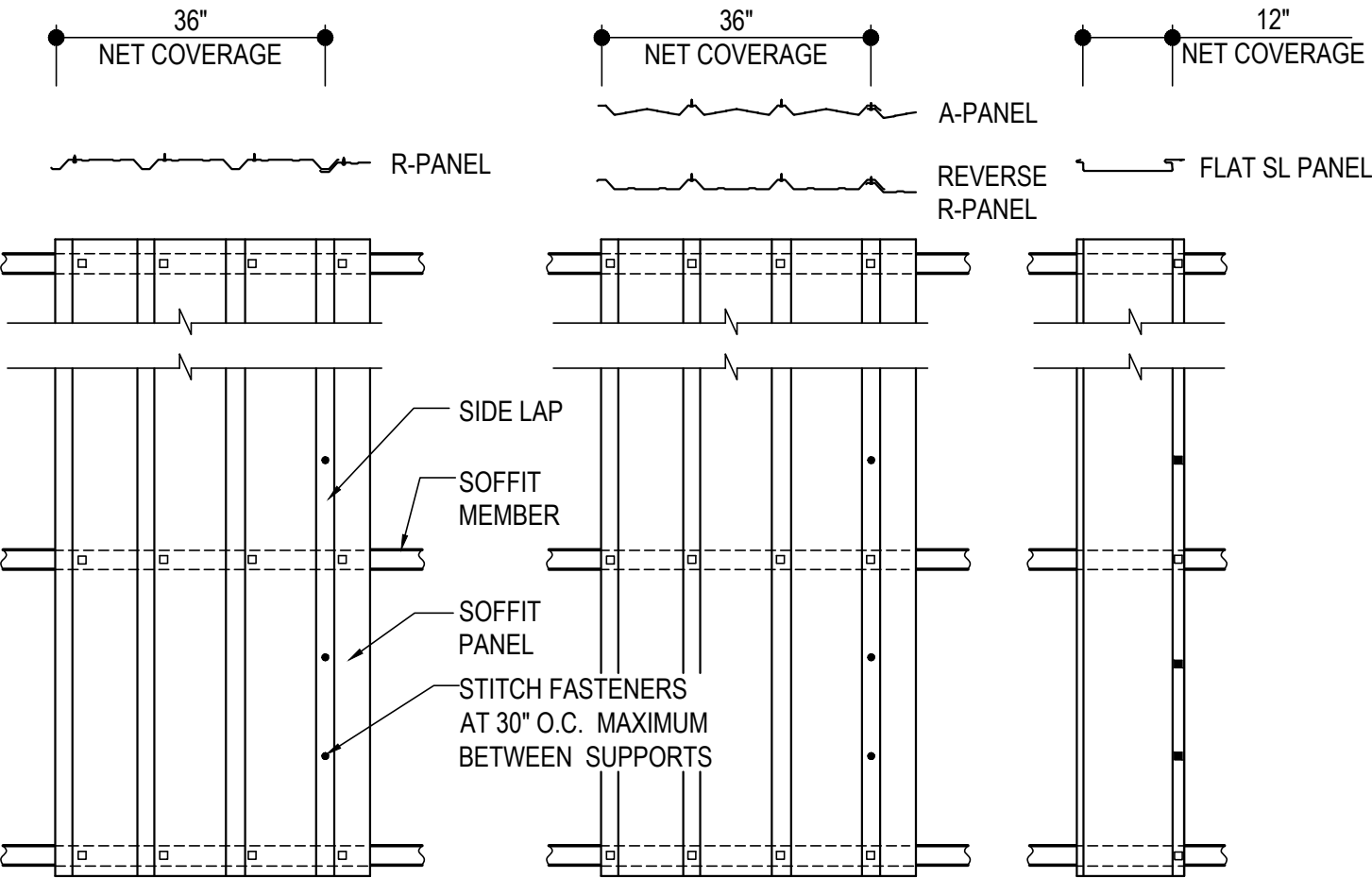
- HK0005 - SOFFIT PANEL ERECTION DETAIL
 - HK0007 - FLAT SL PANEL ATTACHMENT DETAIL
 - HK1010 - CAP TRIM AT FASCIA OR PARAPET
 - HK1020 - FASCIA CORNER DETAIL - A-PANEL
 - HK1030 - FASCIA CORNER DETAIL - R-PANEL
 - HK1040 - FASCIA CORNER DETAIL - REVERSE R-PANEL
 - HK1050 - FASCIA TERMINATION DETAIL - A-PANEL
 - HK1060 - FASCIA TERMINATION DETAIL - R-PANEL
 - HK1070 - FASCIA TERMINATION SECTION - REVERSE R-PANEL
 - HK1080 - FASCIA TERMINATION SECTION - R-PANEL
 - HK1090 - FASCIA CORNER DETAIL - A-PANEL
 - HK1100 - FASCIA CORNER DETAIL - REVERSE R-PANEL
 - HK1110 - FASCIA TERMINATION SECTION - R-PANEL
 - HK1120 - FASCIA TERMINATION SECTION - A-PANEL
 - HK1130 - FASCIA TERMINATION SECTION - REVERSE R-PANEL
 - HK1140 - SOFFIT CORNER TRIM
 - HK1150 - FASCIA CAP TRIM CORNER DETAIL
 - HK1160 - FASCIA TERMINATION DETAIL
 - HK1170 - FASCIA TERMINATION DETAIL
 - HK1180 - FASCIA SOFFIT TERMINATION AT WALL
-

HK0005 - SOFFIT PANEL ERECTION DETAIL

[Download the DWG file by clicking here.](#)

- H1060 STITCH FASTENER
- ▣ H1040 STRUCTURAL FASTENER
- NEGATIVE LOAD CLIP (MK. NLC-1)
(SEE FLAT SL PANEL ATTACHMENT DETAIL)

ERECTOR NOTE:
ERECTION OF THE SOFFIT PANEL MUST BE COORDINATED PROPERLY WITH THE SOFFIT TRIM CONDITIONS AS SHOWN IN THE ERECTION DETAILS. PLACEMENT AND ORIENTATION OF THE SOFFIT PANEL MAY VARY BY CONDITION AND SUPPORT MEMBERS MAY ALSO VARY. USE THIS FASTENING PATTERN UNLESS TRIM SECTION SHOWS A SPECIFIC PATTERN.



SOFFIT PANEL ERECTION DETAIL

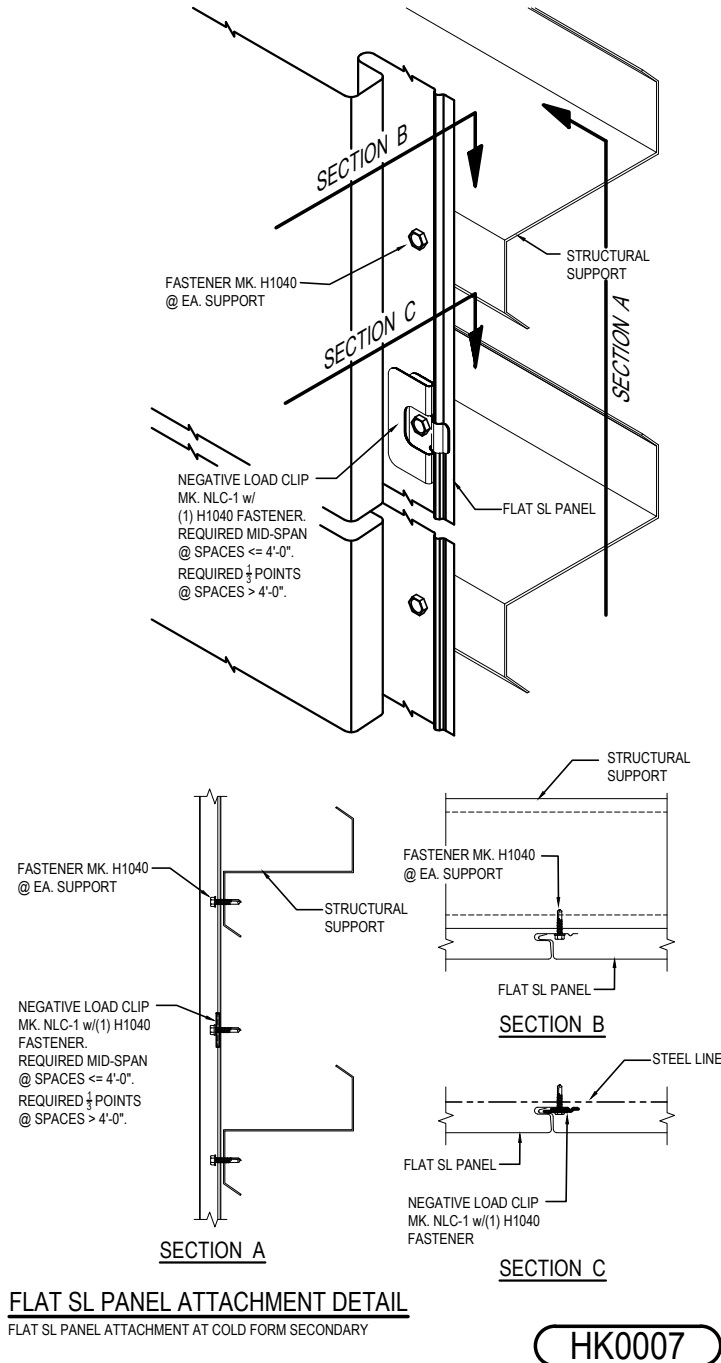
HK0005

Detailer Notes:

- 1) THIS DETAIL IS A DUPLICATE OF DO0005, DQ0005, EO3005, EO6005, EQ3005, EQ6005, & IK0005. DUPLICATE DETAILS ARE TO ENSURE THAT THEY ARE PLACED IN ORDER IN THE ERECTION DRAWINGS.

HK0007 - FLAT SL PANEL ATTACHMENT DETAIL

[Download the DWG file by clicking here.](#)



Detailer Notes:

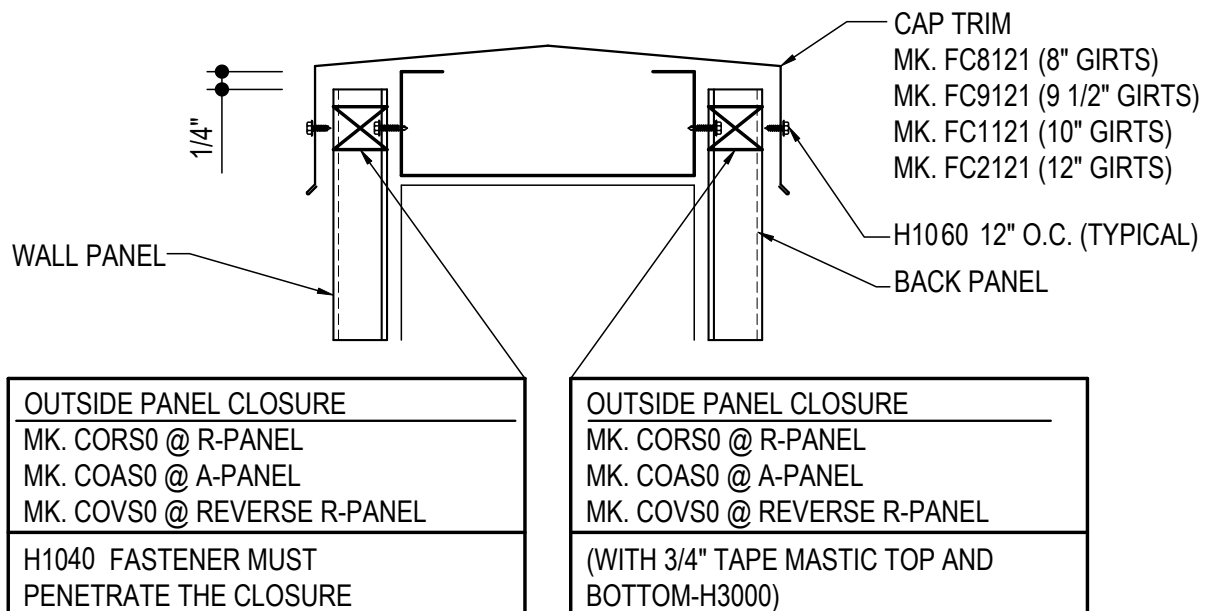
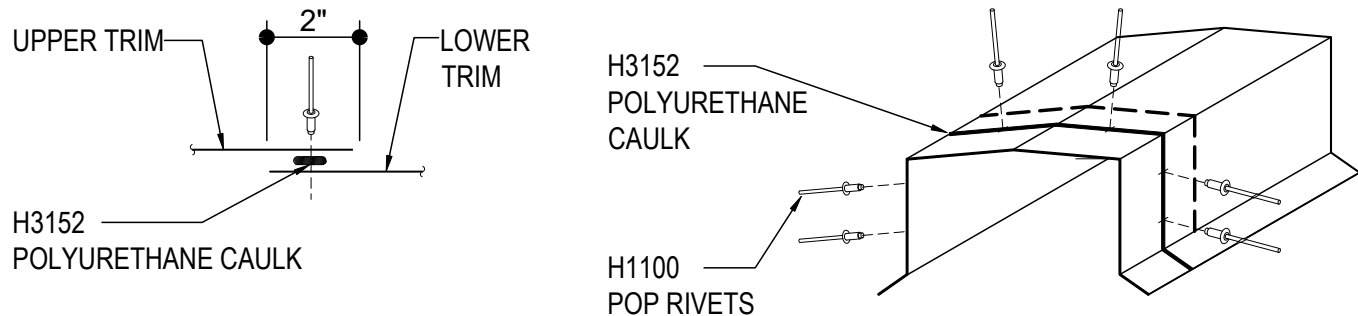
- 1) THIS DETAIL IS A DUPLICATE OF DO0007, DQ0007, EO3007, EO6007, EQ3007, EQ6007, & IK0007. DUPLICATE DETAILS ARE TO ENSURE THAT THEY ARE PLACED IN ORDER IN THE ERECTION DRAWINGS.

HK1010 - CAP TRIM AT FASCIA OR PARAPET

[Download the DWG file by clicking here.](#)

CAP TRIM LAP

APPLY CONTINUOUS BEAD OF CAULK 1" FROM END OF TRIM DOWN PROFILE OF TRIM. FASTEN LAP WITH STITCH FASTENERS AND POP RIVETS AS SHOWN.



TOP OF PARAPET OR FASCIA

CAP TRIM AT TOP OF PARAPET OR FASCIA WITH STANDARD WALL PANEL

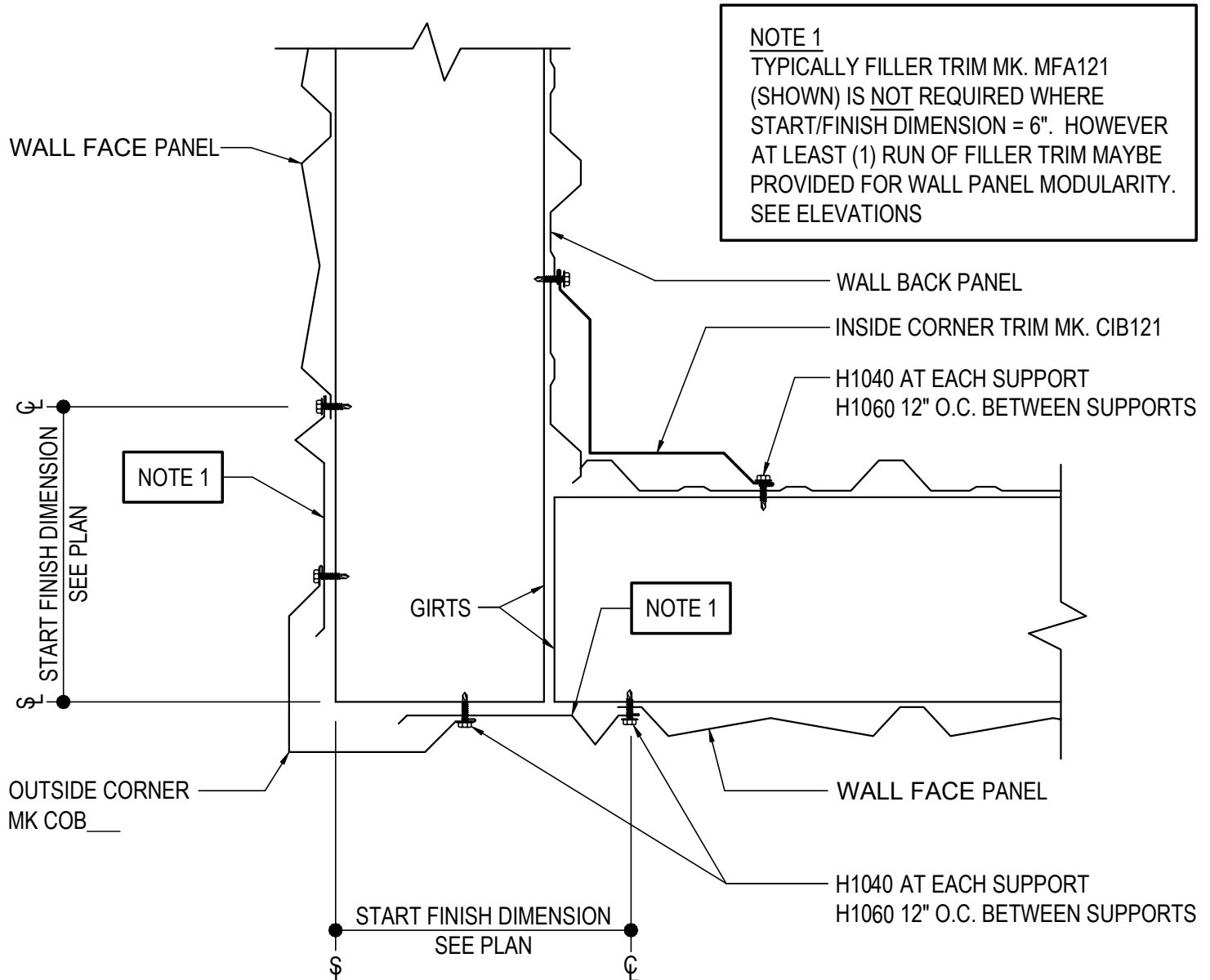
HK1010

Detailer Notes:

- 1) THIS DETAIL IS USED FOR ALL STANDARD WALL PANELS.

HK1020 - FASCIA CONER DETAIL - A-PANEL

[Download the DWG file by clicking here.](#)



FASCIA CORNER DETAIL

SEE WALL SHEETING ERECTION NOTES FOR WALL PANEL FASTENER LOCATIONS

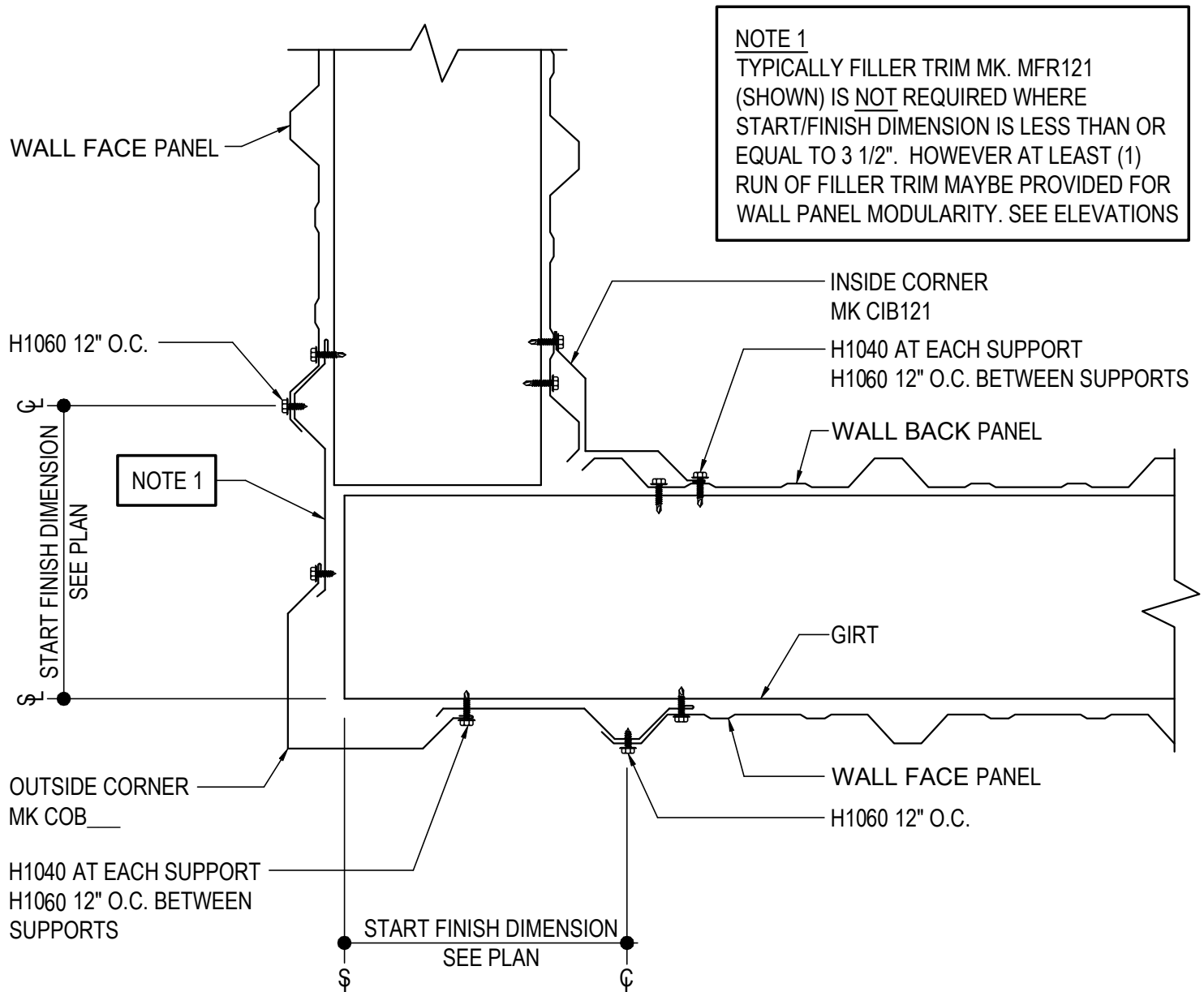
HK1020

Detailer Notes:

1) N/A

HK1030 - FASCIA CONER DETAIL - R-PANEL

[Download the DWG file by clicking here.](#)



FASCIA CORNER TRIM DETAIL

SEE WALL SHEETING ERECTION NOTES FOR WALL PANEL FASTENER LOCATIONS

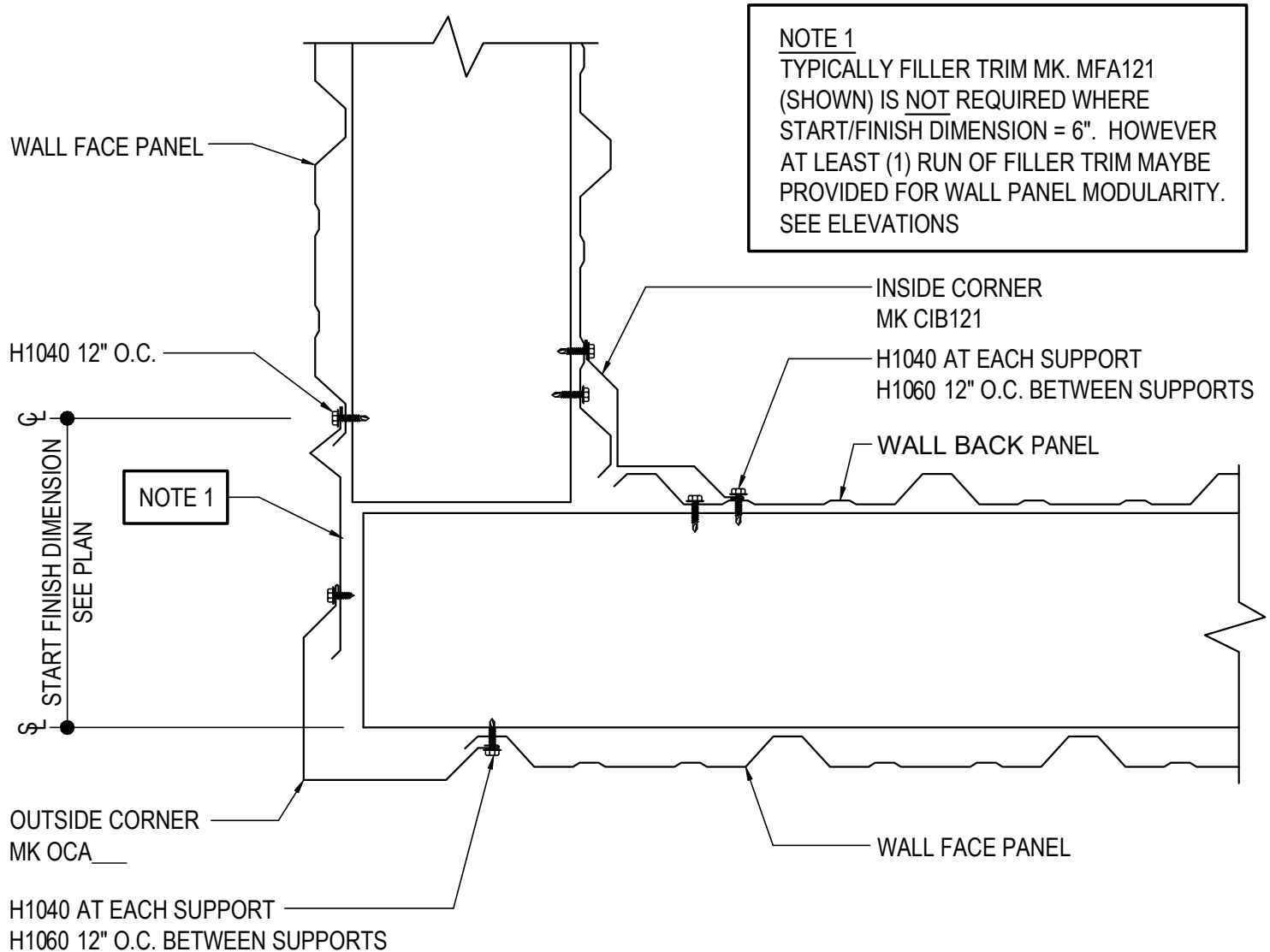
HK1030

Detailer Notes:

- 1) N/A

HK1040 - FASCIA CONER DETAIL - REVERSE R-PANEL

[Download the DWG file by clicking here.](#)



FASCIA CORNER TRIM DETAIL

SEE WALL SHEETING ERECTION NOTES FOR WALL PANEL FASTENER LOCATIONS

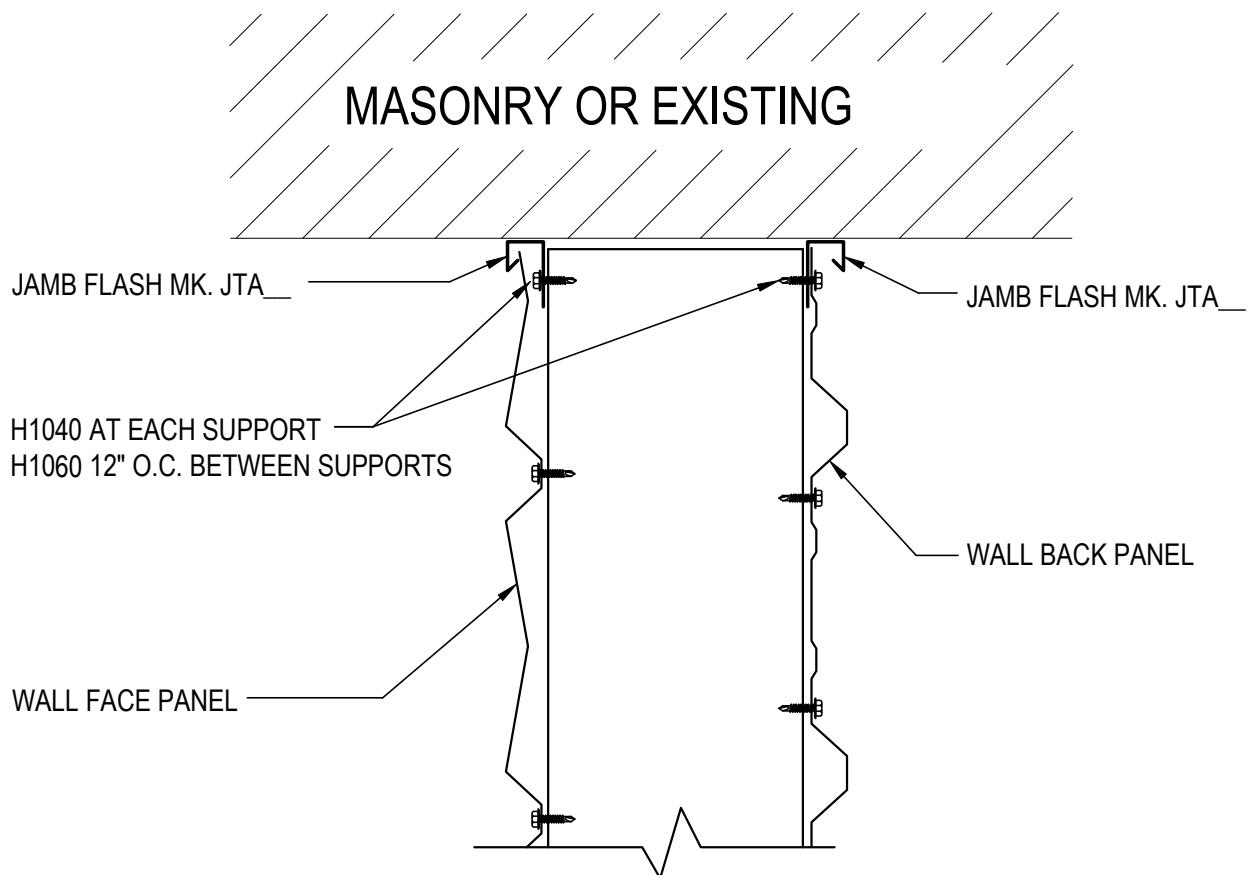
HK1040

Detailer Notes:

1) N/A

HK1050 - FASCIA TERMINATION DETAIL - A-PANEL

[Download the DWG file by clicking here.](#)



FASCIA TERMINATION DETAIL

SEE WALL SHEETING ERECTION NOTES FOR WALL PANEL FASTENER LOCATIONS

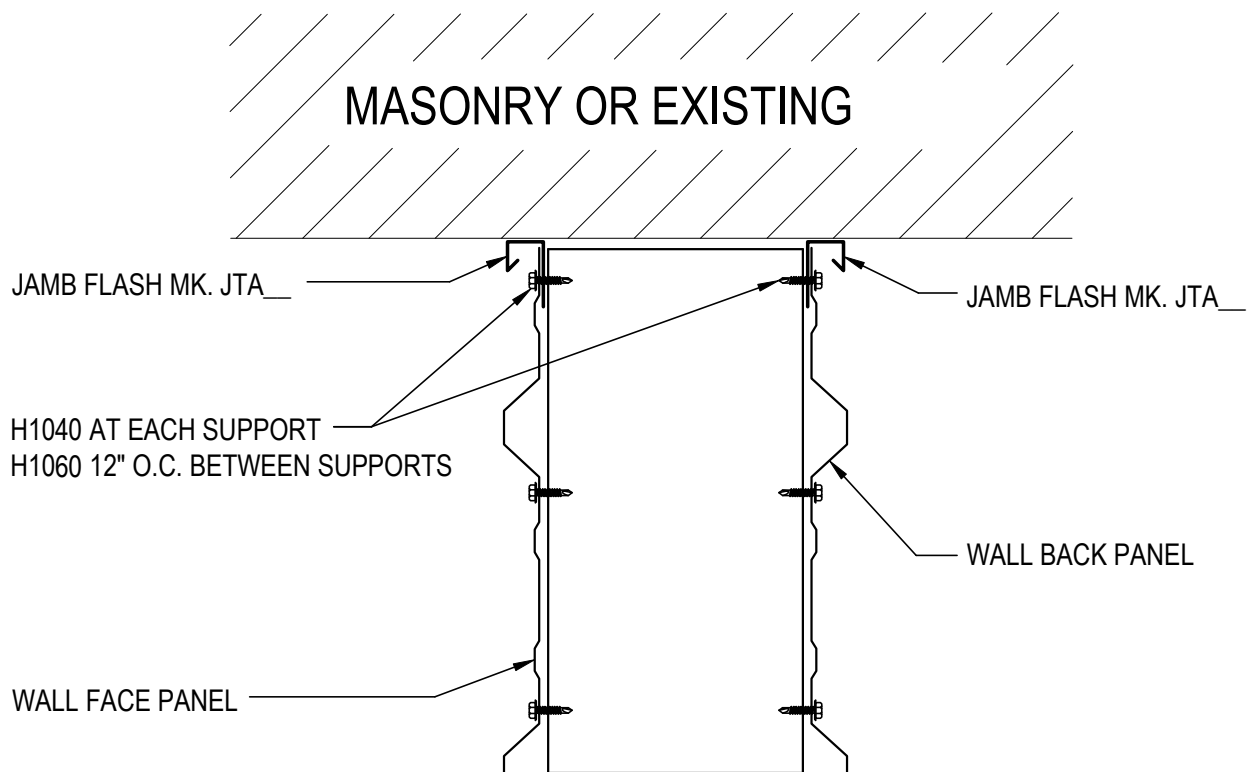
HK1050

Detailer Notes:

1) N/A

HK1060 - FASCIA TERMINATION DETAIL - R-PANEL

[Download the DWG file by clicking here.](#)



FASCIA TERMINATION DETAIL

SEE WALL SHEETING ERECTION NOTES FOR WALL PANEL FASTENER LOCATIONS

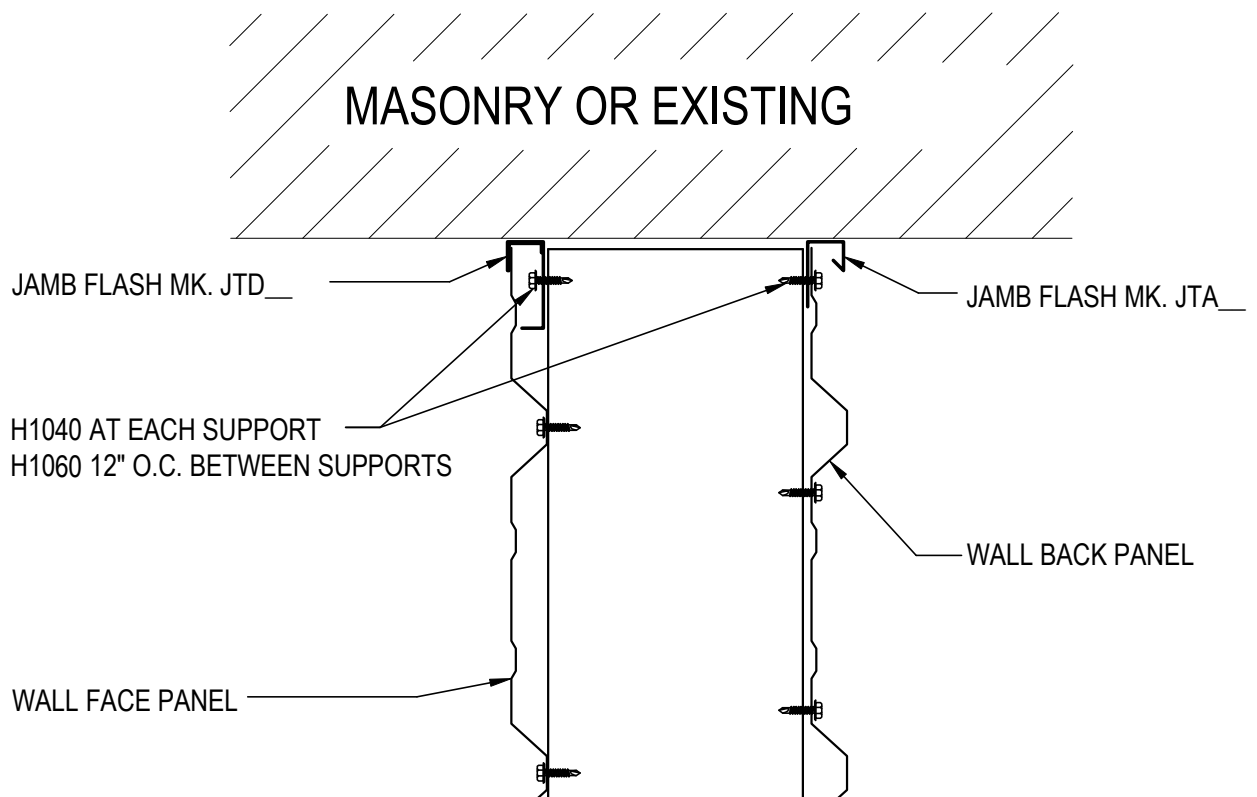
HK1060

Detailer Notes:

1) N/A

HK1070 - FASCIA TERMINATION DETAIL - REVERSE R-PANEL

[Download the DWG file by clicking here.](#)



FASCIA TERMINATION DETAIL

SEE WALL SHEETING ERECTION NOTES FOR WALL PANEL FASTENER LOCATIONS

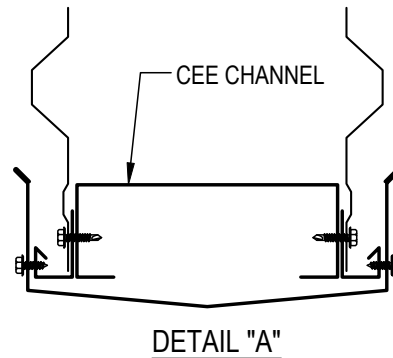
HK1070

Detailer Notes:

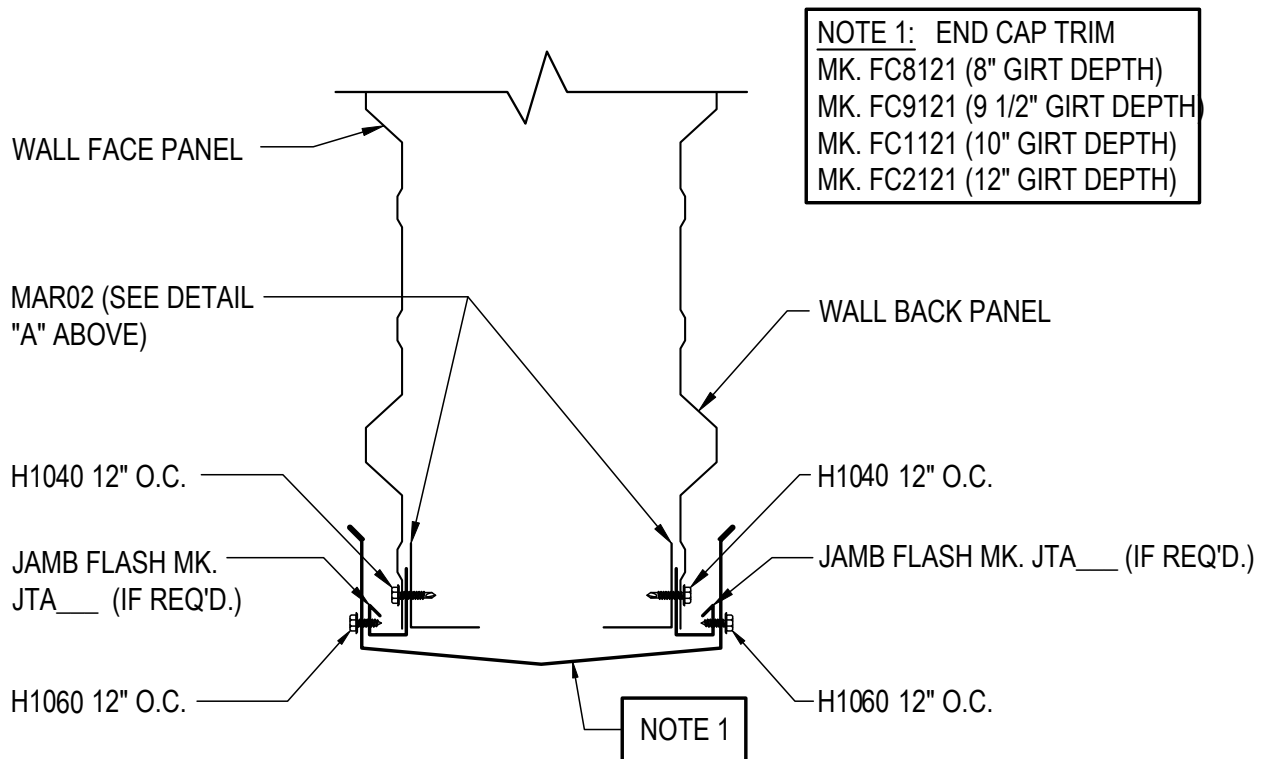
- 1) N/A

HK1080 - FASCIA TERMINATION SECTION - R-PANEL

[Download the DWG file by clicking here.](#)



SUPPORT MEMBER MAY BE A CEE CHANNEL IN LIEU OF MAR02 ANGLES. REFER TO FASCIA ELEVATIONS AND FASCIA STRUCTURAL DETAILS.



FASCIA TERMINATION SECTION

ABOVE ROOF

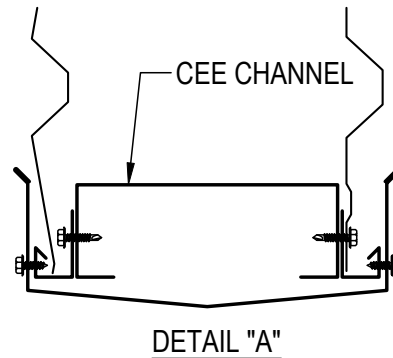
HK1080

Detailer Notes:

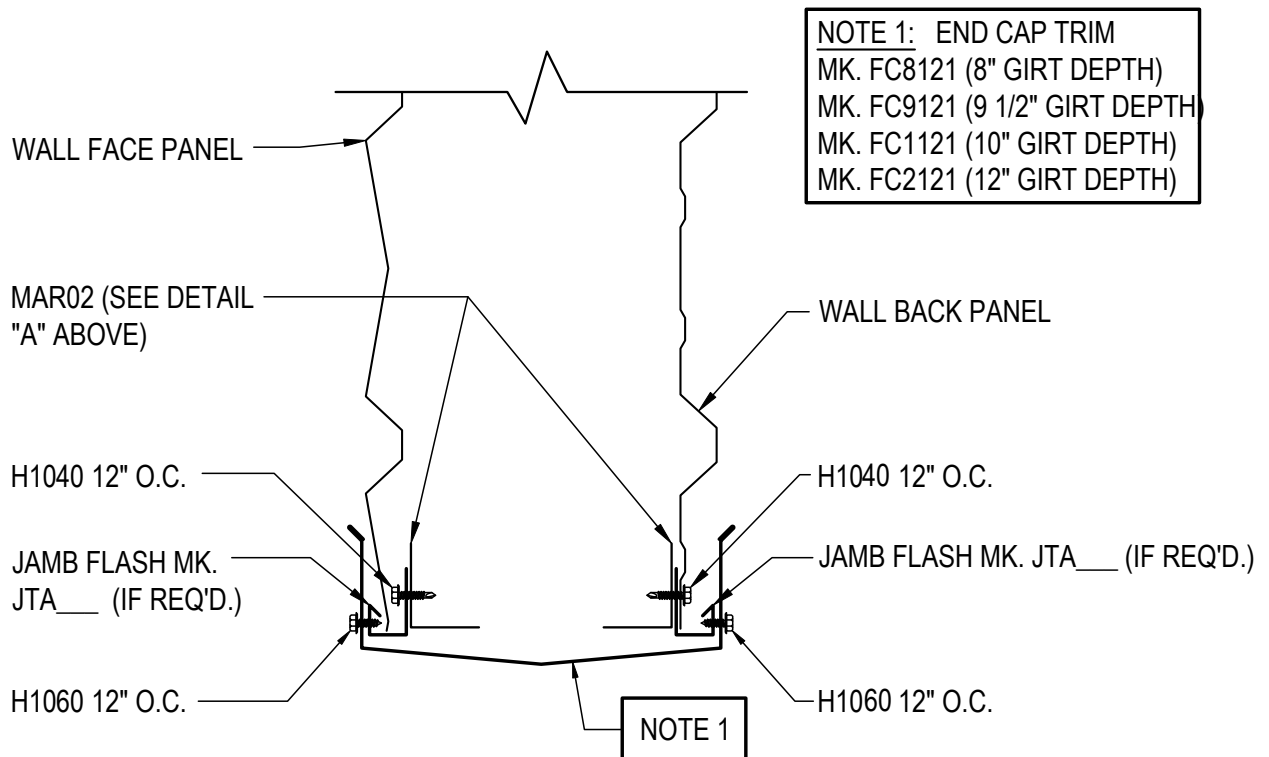
1) N/A

HK1090 - FASCIA TERMINATION SECTION - A-PANEL

[Download the DWG file by clicking here.](#)



SUPPORT MEMBER MAY BE A CEE CHANNEL IN LIEU OF MAR02 ANGLES. REFER TO FASCIA ELEVATIONS AND FASCIA STRUCTURAL DETAILS.



FASCIA TERMINATION SECTION

ABOVE ROOF

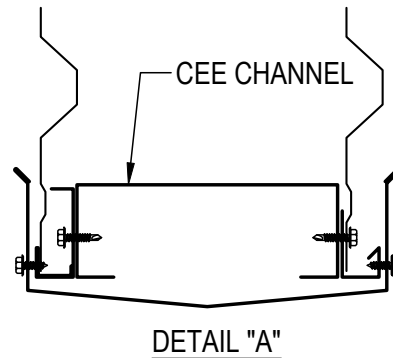
HK1090

Detailer Notes:

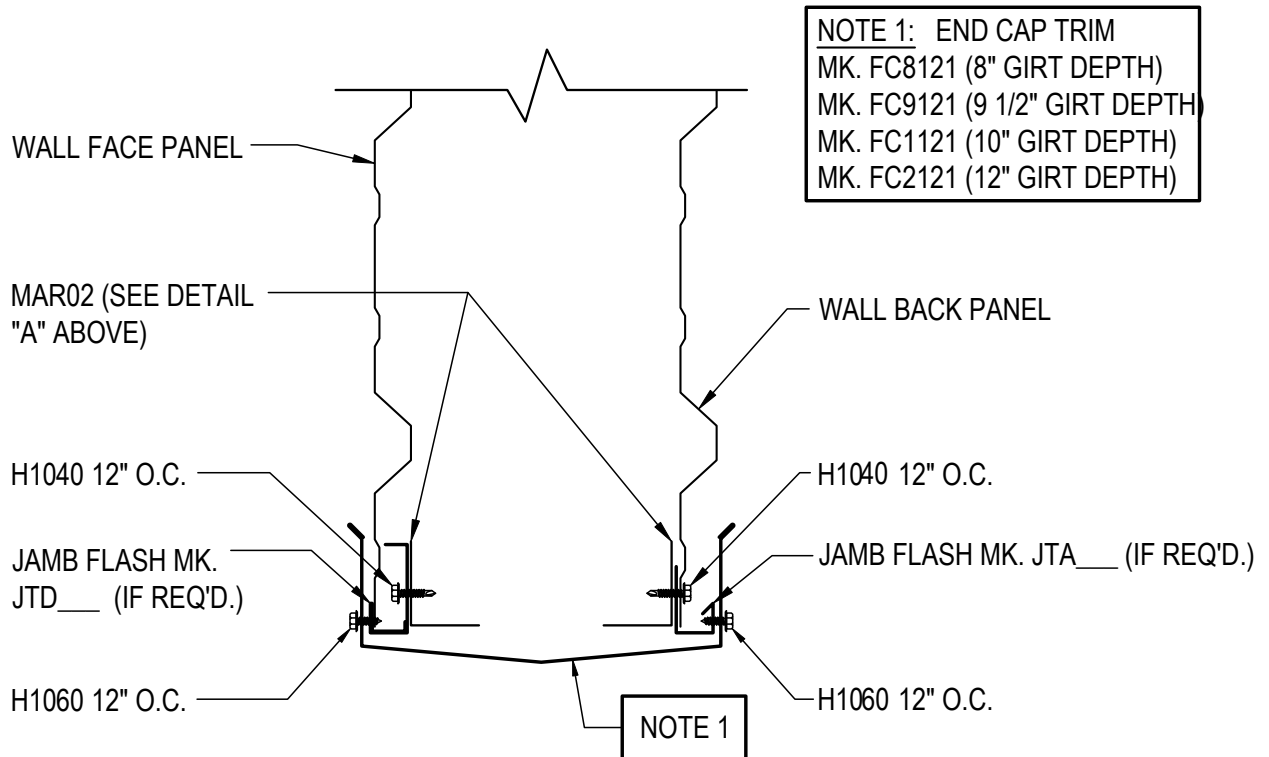
1) N/A

HK1100 - FASCIA TERMINATION SECTION - REVERSE R-PANEL

[Download the DWG file by clicking here.](#)



SUPPORT MEMBER MAY BE A CEE CHANNEL IN LIEU OF MAR02 ANGLES. REFER TO FASCIA ELEVATIONS AND FASCIA STRUCTURAL DETAILS.



FASCIA TERMINATION SECTION

ABOVE ROOF

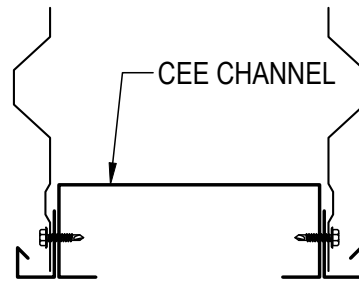
HK1100

Detailer Notes:

1) N/A

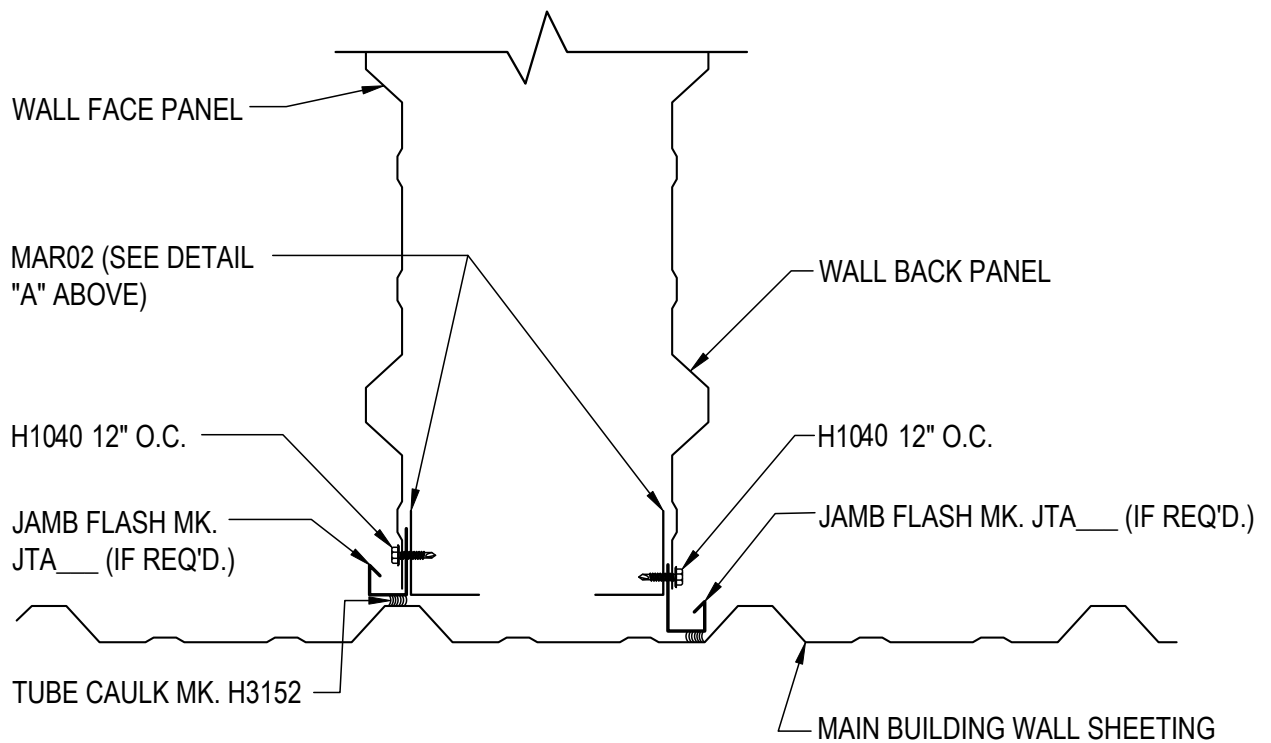
HK1110 - FASCIA TERMINATION SECTION - R-PANEL

[Download the DWG file by clicking here.](#)



DETAIL "A"

SUPPORT MEMBER MAY BE A CEE CHANNEL IN LIEU OF MAR02 ANGLES. REFER TO FASCIA ELEVATIONS AND FASCIA STRUCTURAL DETAILS.



FASCIA TERMINATION SECTION

BELOW ROOF

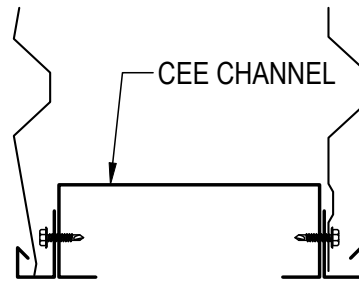
HK1110

Detailer Notes:

1) N/A

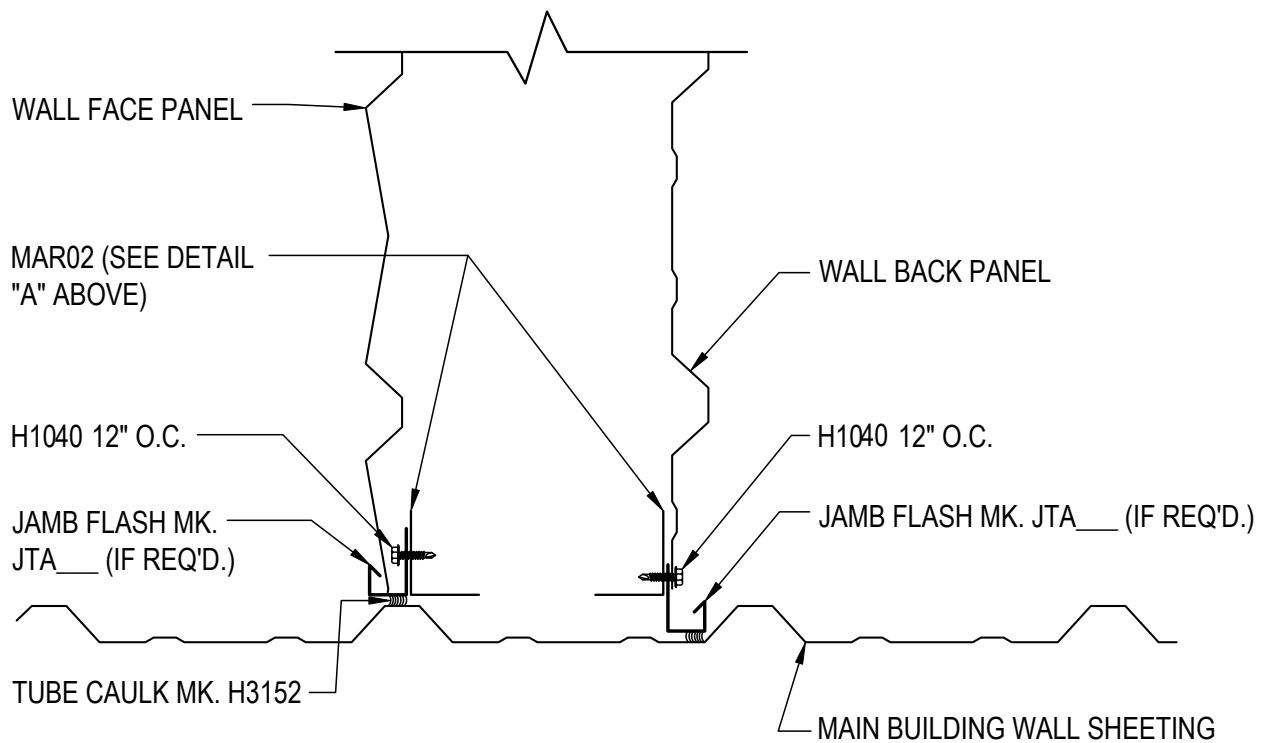
HK1120 - FASCIA TERMINATION SECTION - A-PANEL

[Download the DWG file by clicking here.](#)



DETAIL "A"

SUPPORT MEMBER MAY BE A CEE CHANNEL IN LIEU OF MAR02 ANGLES. REFER TO FASCIA ELEVATIONS AND FASCIA STRUCTURAL DETAILS.



FASCIA TERMINATION SECTION

BELOW ROOF

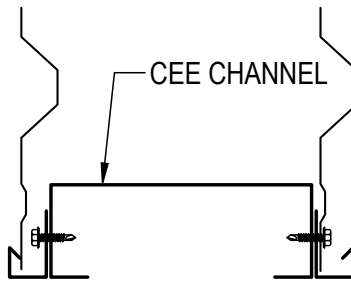
HK1120

Detailer Notes:

1) N/A

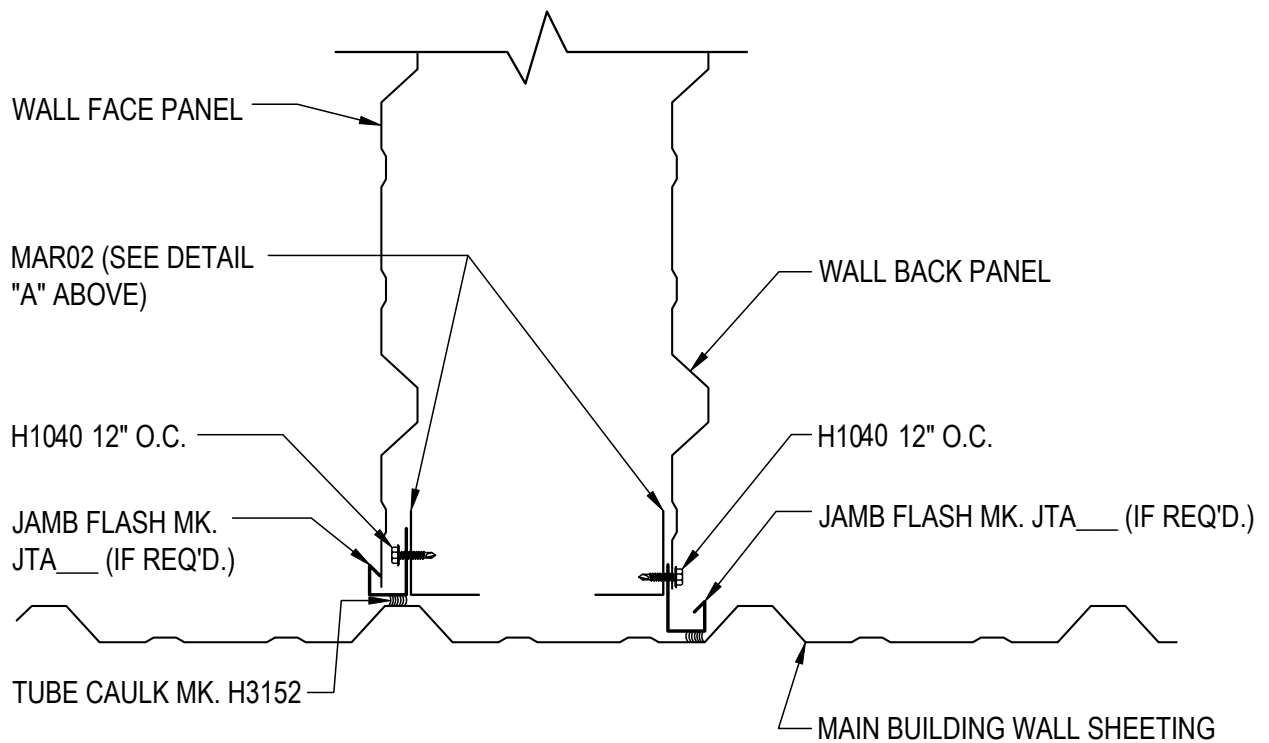
HK1130 - FASCIA TERMINATION SECTION - REVERSE R-PANEL

[Download the DWG file by clicking here.](#)



DETAIL "A"

SUPPORT MEMBER MAY BE A CEE CHANNEL IN LIEU OF MAR02 ANGLES. REFER TO FASCIA ELEVATIONS AND FASCIA STRUCTURAL DETAILS.



FASCIA TERMINATION SECTION

BELOW ROOF

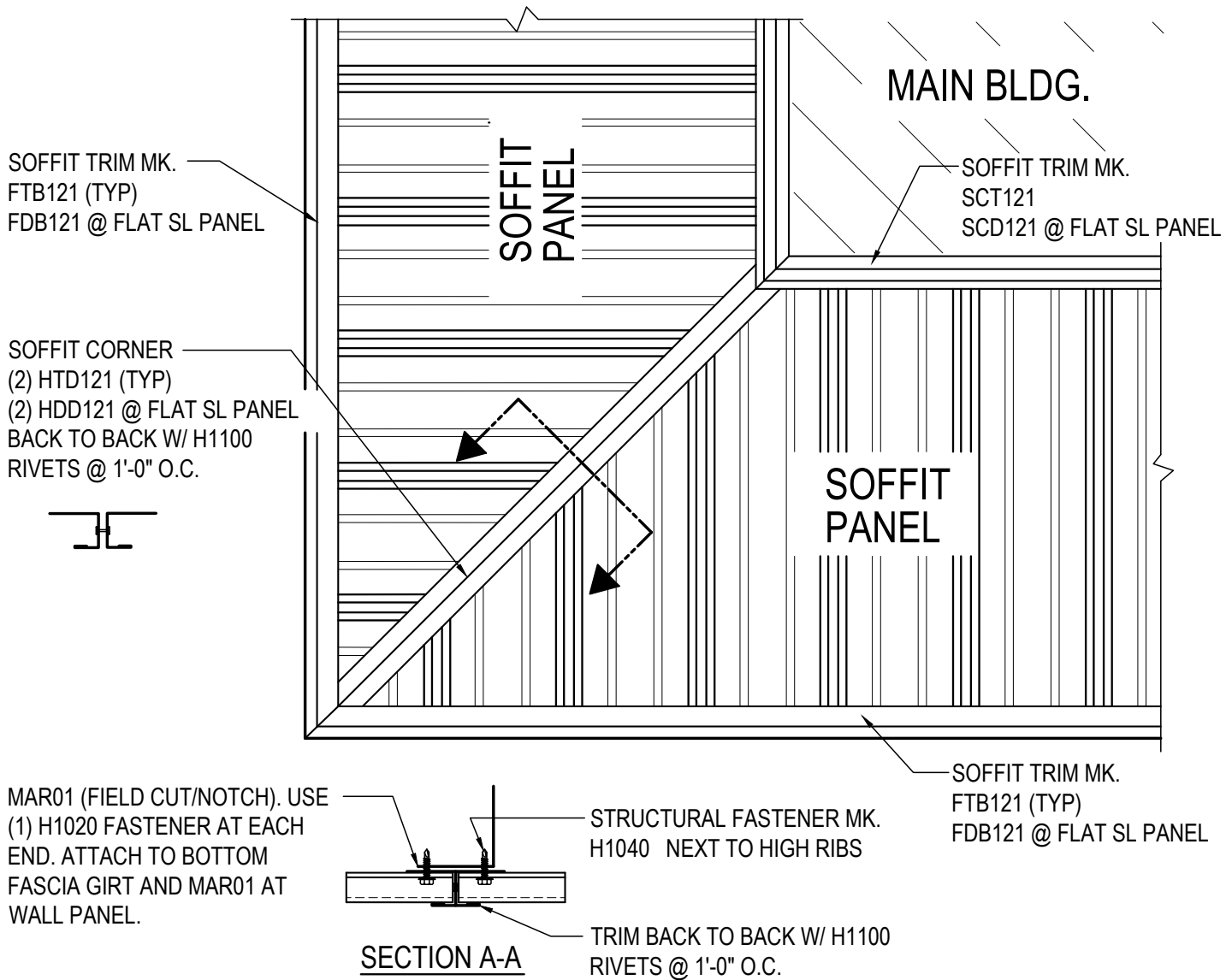
HK1130

Detailer Notes:

1) N/A

HK1140 - SOFFIT CORNER TRIM

[Download the DWG file by clicking here.](#)



SOFFIT CORNER TRIM

BOTTOM VIEW

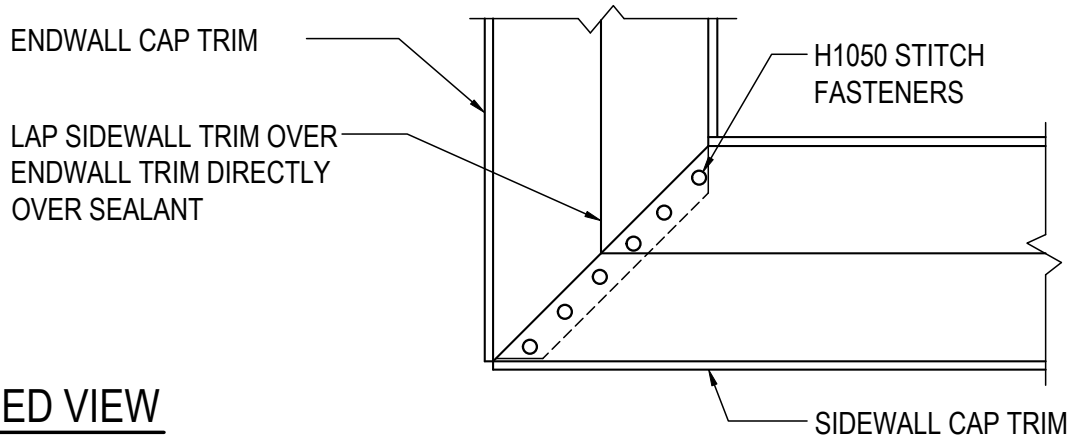
HK1140

Detailer Notes:

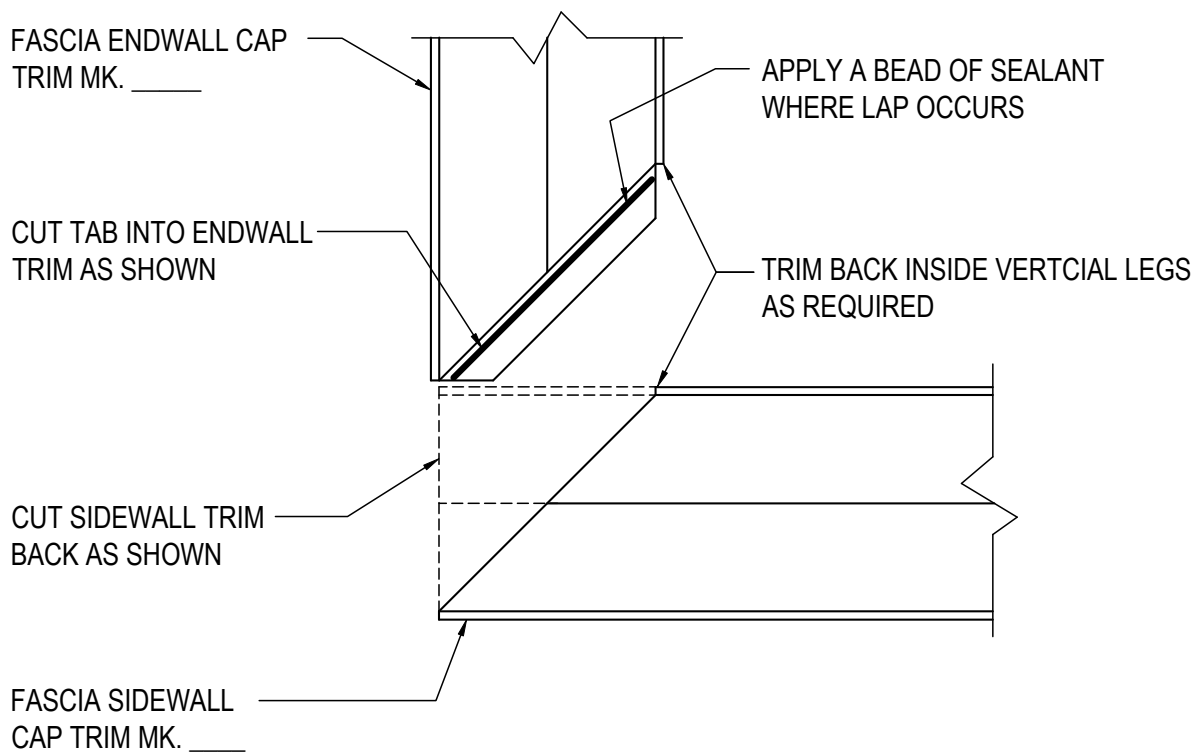
1) N/A

HK1150 - FASCIA CAP TRIM CORNER DETAIL

[Download the DWG file by clicking here.](#)



FINISHED VIEW



FASCIA CAP TRIM CORNER DETAIL

BOTTOM VIEW

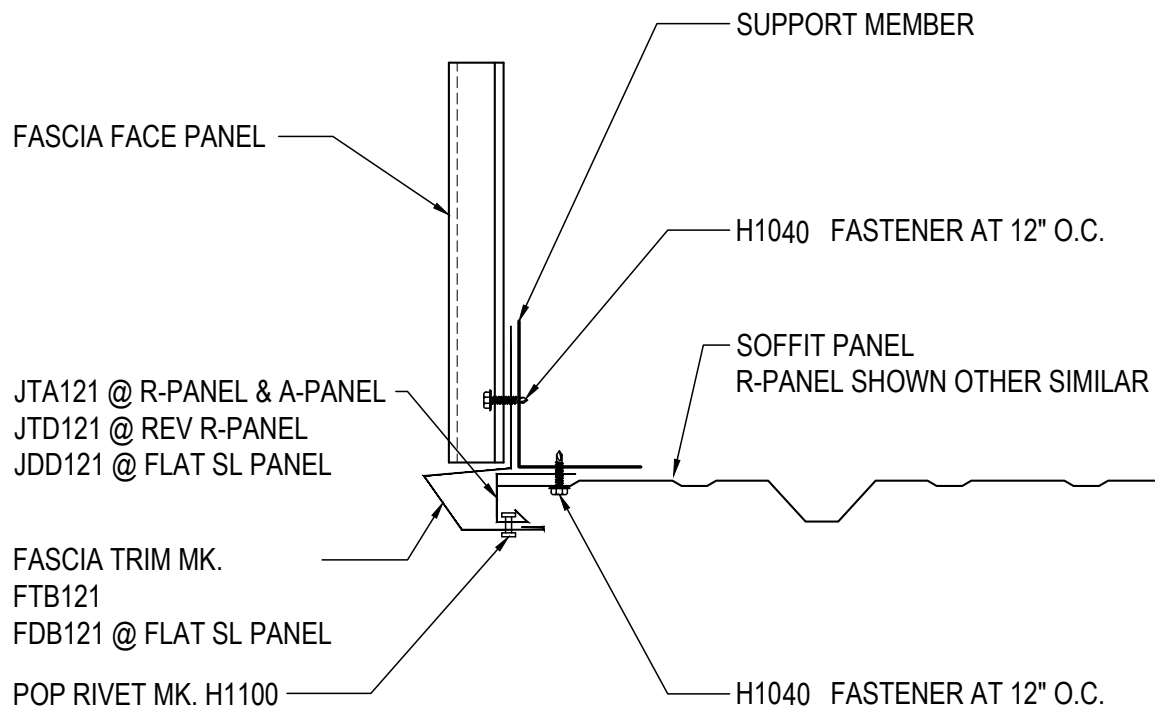
HK1150

Detailer Notes:

1) N/A

HK1160 - FASCIA TERMINATION DETAIL

[Download the DWG file by clicking here.](#)



FASCIA TERMINATION

SEE WALL PANEL ERECTION NOTES FOR WALL PANEL FASTENER LOCATIONS
SEE SOFFIT PANEL ERECTION NOTE FOR SOFFIT PANEL FASTENER LOCATIONS

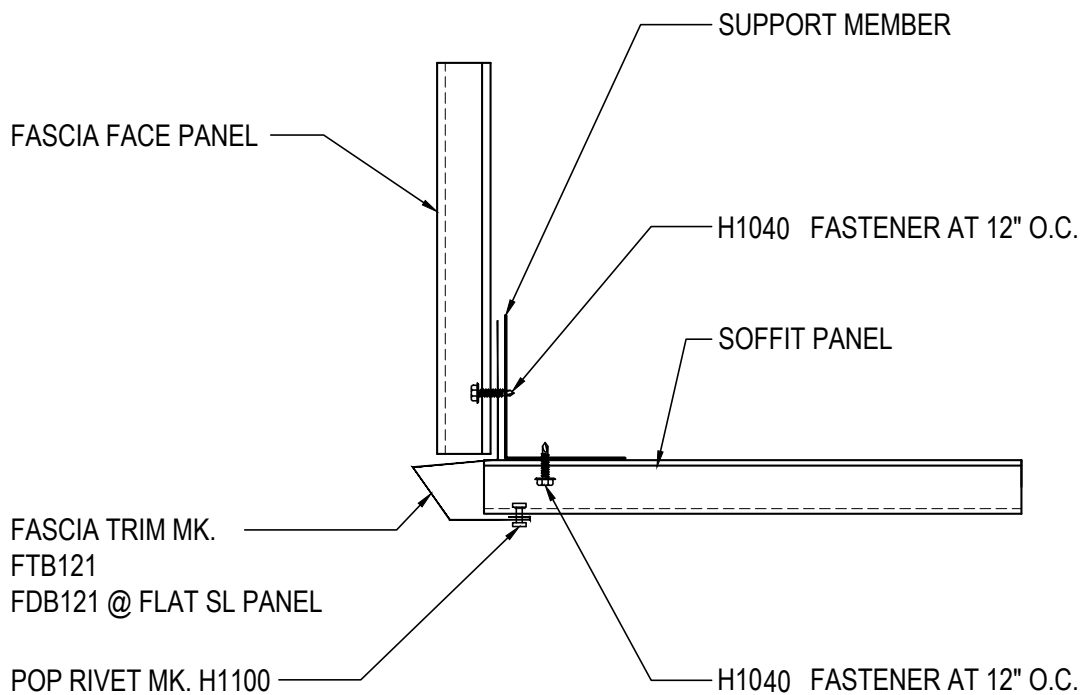
Detailer Notes:

1) N/A

HK1160

HK1170 - FASCIA TERMINATION DETAIL

[Download the DWG file by clicking here.](#)



FASCIA TERMINATION

SEE WALL PANEL ERECTION NOTES FOR WALL PANEL FASTENER LOCATIONS
SEE SOFFIT PANEL ERECTION NOTE FOR SOFFIT PANEL FASTENER LOCATIONS

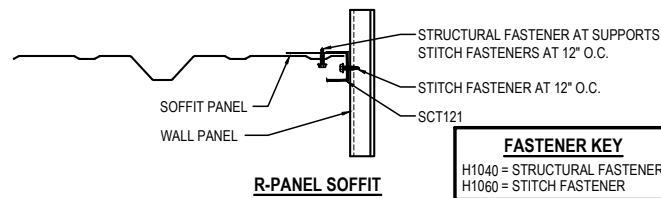
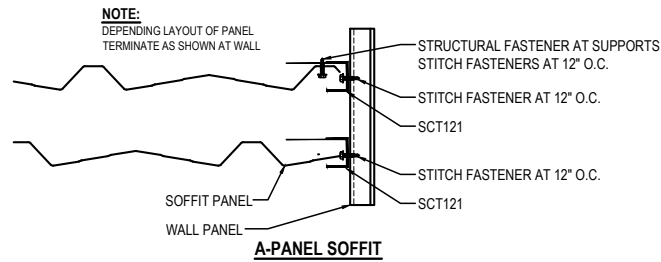
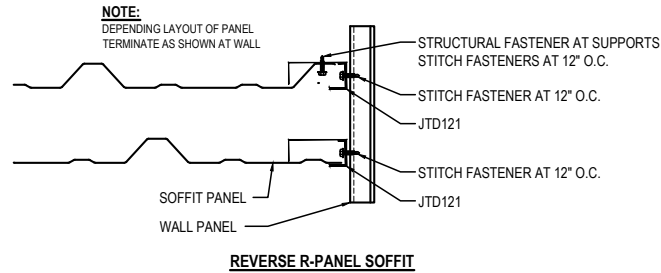
HK1170

Detailer Notes:

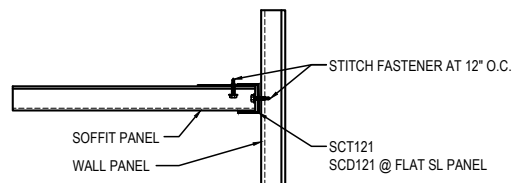
1) N/A

HK1180 - FASCIA SOFFIT TERMINATION AT WALL

[Download the DWG file by clicking here.](#)



PANEL PARALLEL TO WALL



PANEL PERPENDICULAR TO WALL

FASCIA SOFFIT TERMINATION AT WALL

SEE WALL PANEL ERECTION NOTES FOR WALL PANEL FASTENER LOCATIONS
SEE SOFFIT PANEL ERECTION NOTE FOR SOFFIT PANEL FASTENER LOCATIONS

HK1180

Detailer Notes:

1) N/A