

PARTITION WALL SHEETING

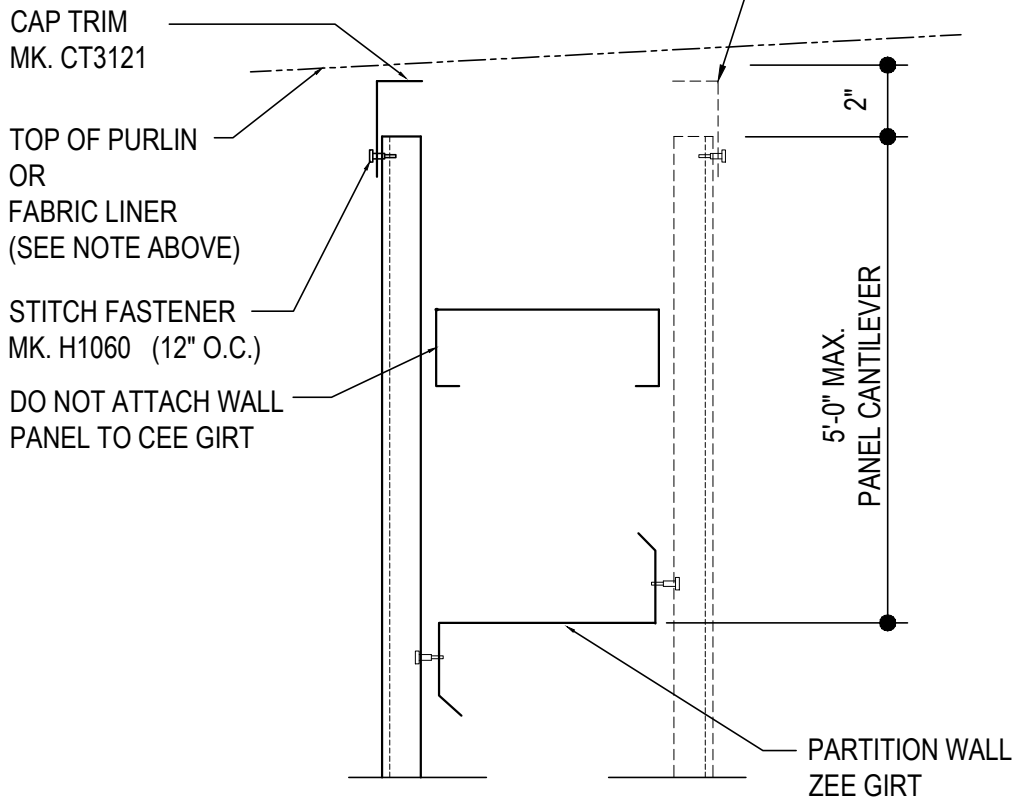
- IH0010 - LONGITUDINAL PARTITION WALL AT TOP
 - IH0020 - LONGITUDINAL PARTITION WALL COVERPLATE INSTALLATION DETAIL
 - IH0030 - TRANSVERSE PARTITION WALL TOP AT PURLINS AND MID-BAY
 - IH0040 - TRANSVERSE PARTITION WALL TOP AT JOISTS AND MID-BAY
 - IH0050 - ALT. TRANSVERSE PARTITION WALL TOP AT MID-BAY
 - IH0060 - TRANSVERSE PARTITION WALL TOP AT PURLINS AND FRAMELINE
 - IH0070 - TRANSVERSE PARTITION WALL TOP AT JOISTS AND FRAMELINE
 - IH0080 - ALT. TRANSVERSE PARTITION WALL TOP AT FRAMELINE
 - IH0090 - PARTITION WALL BASE CONDITION
-

IH0010 - LONGITUDINAL PARTITION WALL AT TOP

[Download the DWG file by clicking here.](#)

NOTE:
THE TYPICAL PANEL ARRANGEMENT INVOLVES
PLACING THE PANELS WITHIN THE PURLIN CAVITY.
IN THE PRESENCE OF A FABRIC LINER, THE
PANELS WILL BE SHORTENED TO FIT BENEATH IT.

NOTE:
IF BOTH SIDES ARE SHEETED,
FOLLOW SAME INSTALLATION
PROCEDURE AS OPPOSITE SIDE.



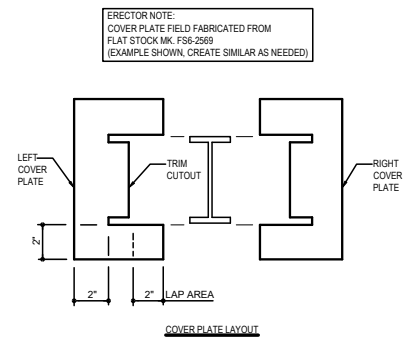
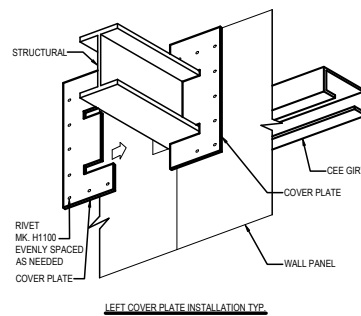
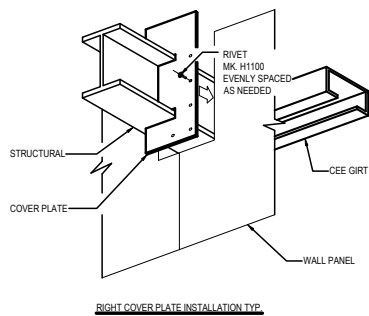
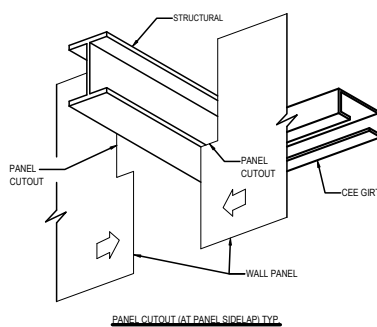
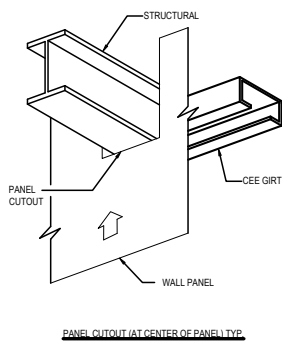
LONGITUDINAL PARTITION WALL AT TOP

IH0010

Detailer Notes:

IH0020 - LONGITUDINAL PARTITION WALL COVERPLATE INSTALLATION DETAIL

[Download the DWG file by clicking here.](#)



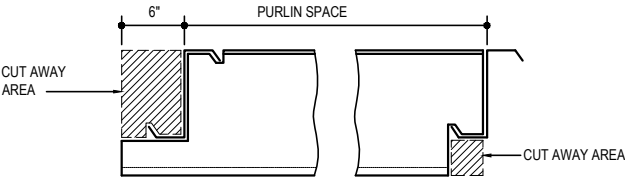
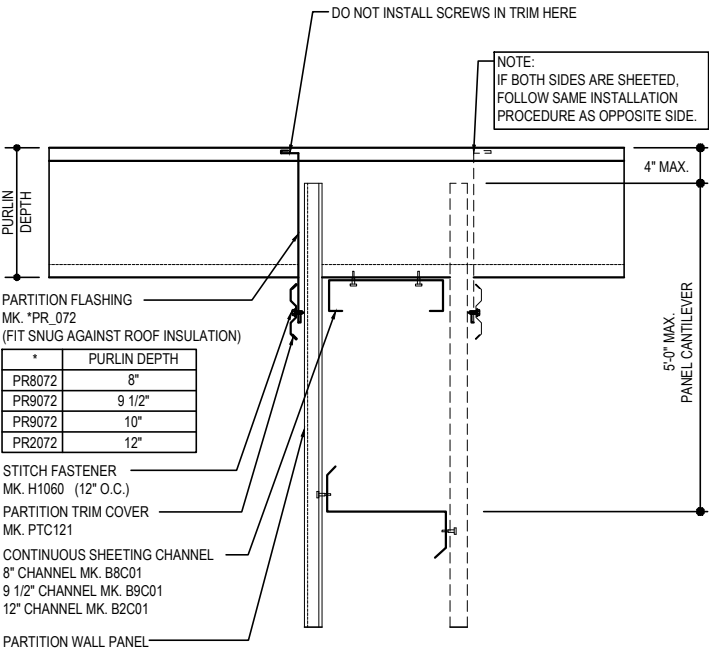
LONGITUDINAL PARTITION WALL
COVERPLATE INSTALLATION DETAIL

IH0020

Detailer Notes:

IH0030 - TRANSVERSE PARTITION WALL TOP AT PURLINS AND MID-BAY

[Download the DWG file by clicking here.](#)



PARTITION FLASHING MUST BE CUT TO
LENGTH AND NOTCHED IN THE FIELD.
FIELD WORK OF FLASHING WILL BE
REQUIRED AT ALL PURLINS, EAVES AND RIDGES.

PARTITION TRIM CUTOUT FOR PURLINS

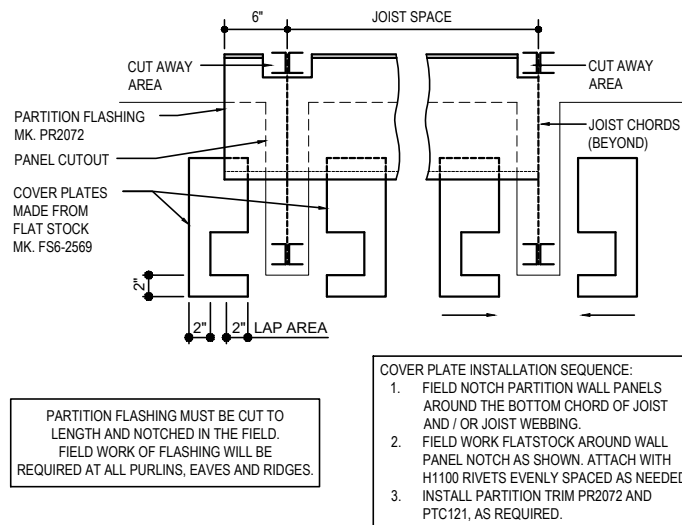
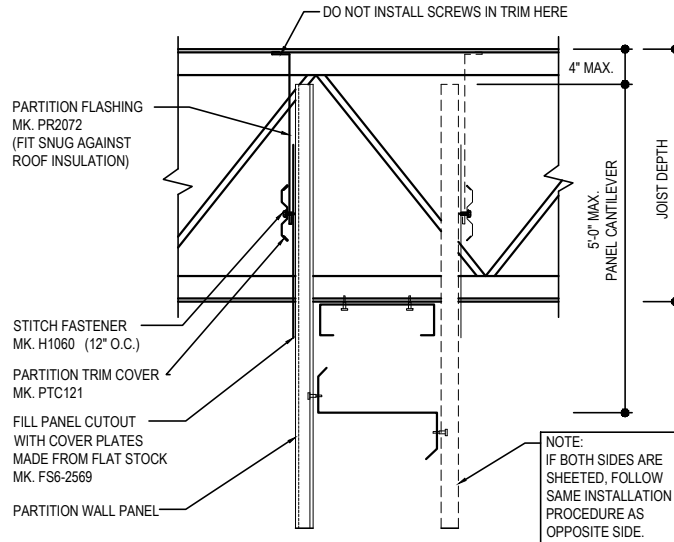
TRANSVERSE PARTITION WALL
TOP AT PURLINS AND MID-BAY

IH0030

Detailer Notes:

IH0040 - TRANSVERSE PARTITION WALL TOP AT JOISTS AND MID-BAY

[Download the DWG file by clicking here.](#)



PARTITION TRIM CUTOUT FOR JOISTS

TRANSVERSE PARTITION WALL TOP AT JOISTS AND MID-BAY

IH0040

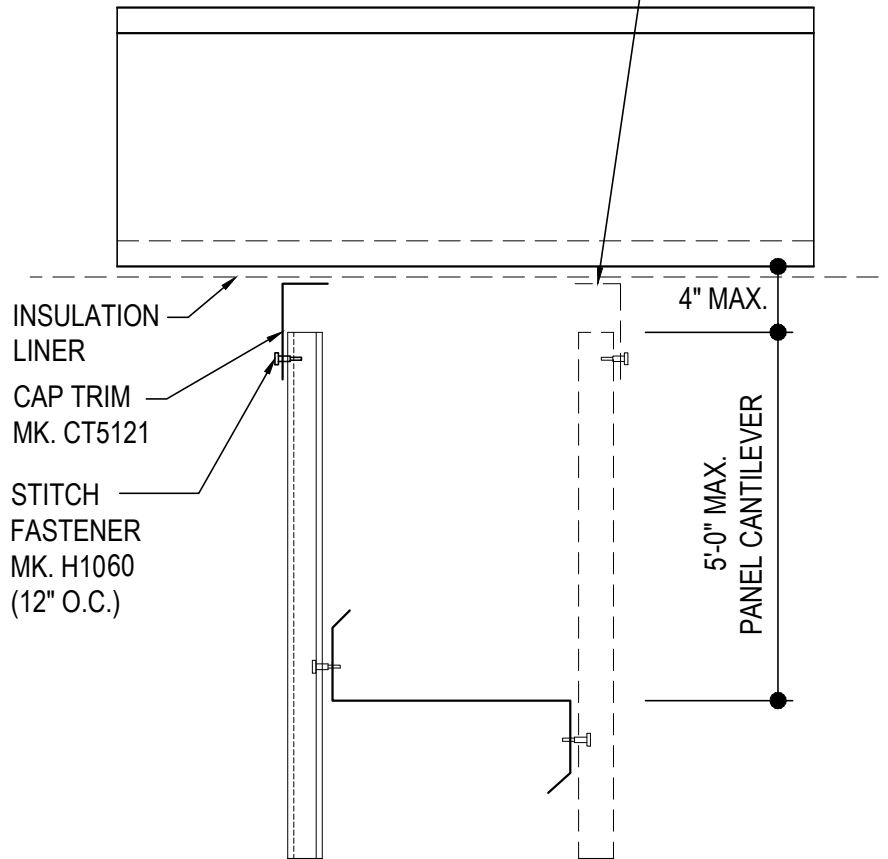
Detailer Notes:

IH0050 - ALT. TRANSVERSE PARTITION WALL TOP WITH PURLINS AND INSULATION LINER AT MID-BAY

[Download the DWG file by clicking here.](#)

NOTE:
THE TYPICAL PANEL ARRANGEMENT INVOLVES PLACING THE PANELS WITHIN THE PURLIN CAVITY. IN THE PRESENCE OF A FABRIC LINER, THE PANELS WILL BE SHORTENED TO FIT BENEATH IT.

NOTE:
IF BOTH SIDES ARE SHEETED, FOLLOW SAME INSTALLATION PROCEDURE AS OPPOSITE SIDE.



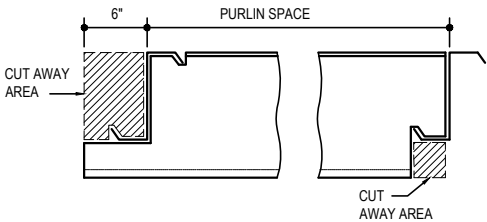
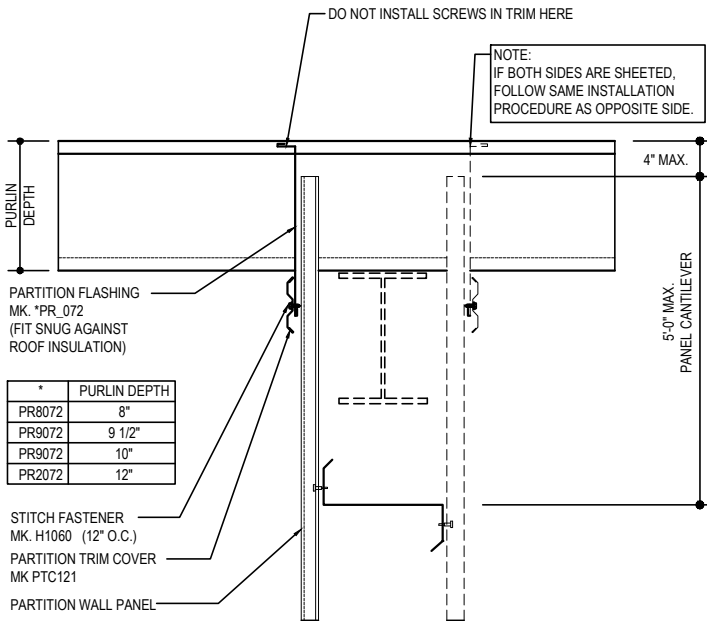
**ALT. TRANSVERSE PARTITION WALL TOP WITH
PURLINS AND INSULATION LINER AT MID-BAY**

IH0050

Detailer Notes:

IH0060 - TRANSVERSE PARTITION WALL TOP AT PURLINS AND FRAMELINE

[Download the DWG file by clicking here.](#)



PARTITION FLASHING MUST BE CUT TO
LENGTH AND NOTCHED IN THE FIELD.
FIELD WORK OF FLASHING WILL BE
REQUIRED AT ALL PURLINS, EAVES AND RIDGES.

PARTITION TRIM CUTOUT FOR PURLINS

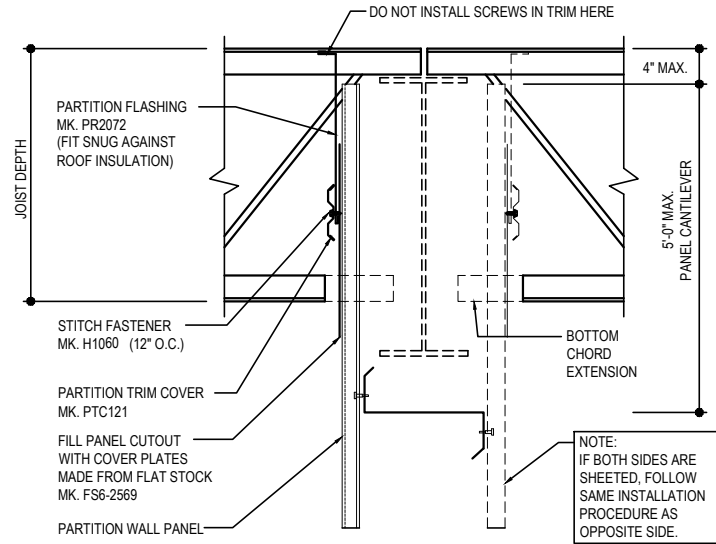
TRANSVERSE PARTITION WALL
TOP AT PURLINS AND FRAMELINE

IH0060

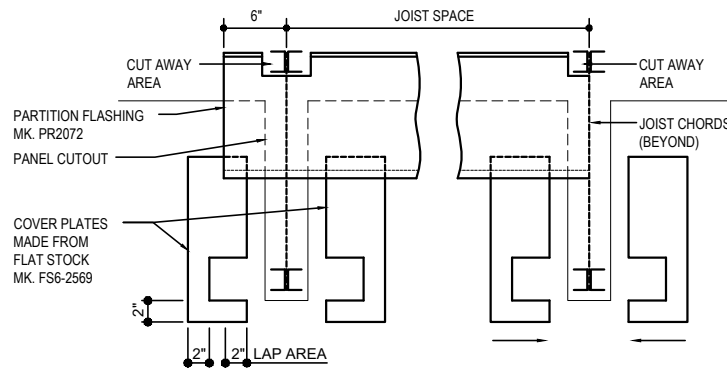
Detailer Notes:

IH0070 - TRANSVERSE PARTITION WALL TOP AT JOISTS AND FRAMELINE

[Download the DWG file by clicking here.](#)



NOTE: COVER PLATES ARE ONLY REQUIRED WHEN NOTCHING PANELS AROUND BOTTOM CHORD EXTENSIONS IS NEEDED.



PARTITION FLASHING MUST BE CUT TO LENGTH AND NOTCHED IN THE FIELD. FIELD WORK OF FLASHING WILL BE REQUIRED AT ALL PURLINS, EAVES AND RIDGES.

COVER PLATE INSTALLATION SEQUENCE:

1. FIELD NOTCH PARTITION WALL PANELS AROUND THE BOTTOM CHORD OF JOIST AND / OR JOIST WEBBING.
2. FIELD WORK FLATSTOCK AROUND WALL PANEL NOTCH AS SHOWN. ATTACH WITH H1100 RIVETS EVENLY SPACED AS NEEDED.
3. INSTALL PARTITION TRIM PR2072 AND PTC121, AS REQUIRED.

PARTITION TRIM CUTOUT FOR JOISTS

TRANSVERSE PARTITION WALL TOP AT JOISTS AND FRAMELINE

IH0070

Detailer Notes:

IH0080- ALT. TRANSVERSE PARTITION WALL TOP AT FRAMELINE

[Download the DWG file by clicking here.](#)

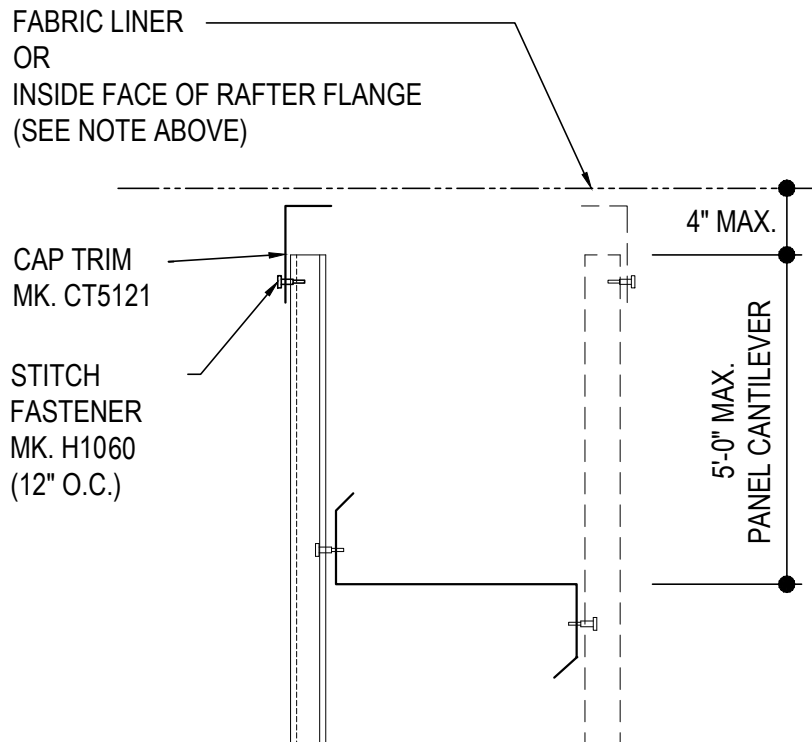
NOTE:

1) INSULATION FABRIC LINER:

- THE TYPICAL PANEL ARRANGEMENT INVOLVES PLACING THE PANELS WITHIN THE PURLIN CAVITY. IN THE PRESENCE OF A FABRIC LINER, THE PANELS WILL BE SHORTENED TO FIT BENEATH IT.

2) INSIDE RAFTER FLANGE:

- THE TYPICAL PANEL ARRANGEMENT INVOLVES EXTENDING THE PANEL BEYOND THE EDGE OF THE INSIDE FLANGE OF THE RAFTER. IF THE INSIDE RAFTER FLANGE WIDTH EXCEEDS THE PARTITION WALL DEPTH, THE PANELS WILL BE SHORTENED TO FIT BENEATH IT.



**ALT. TRANSVERSE PARTITION WALL TOP WITH
INSULATION LINER AT FRAMELINE**

IH0080

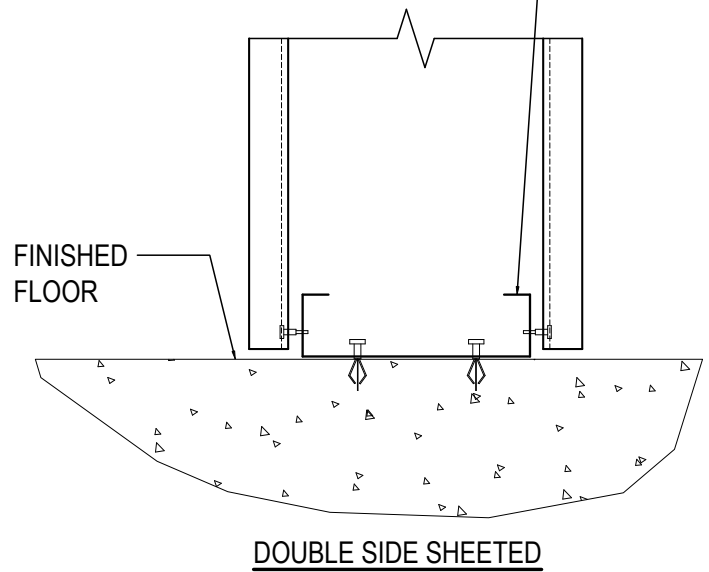
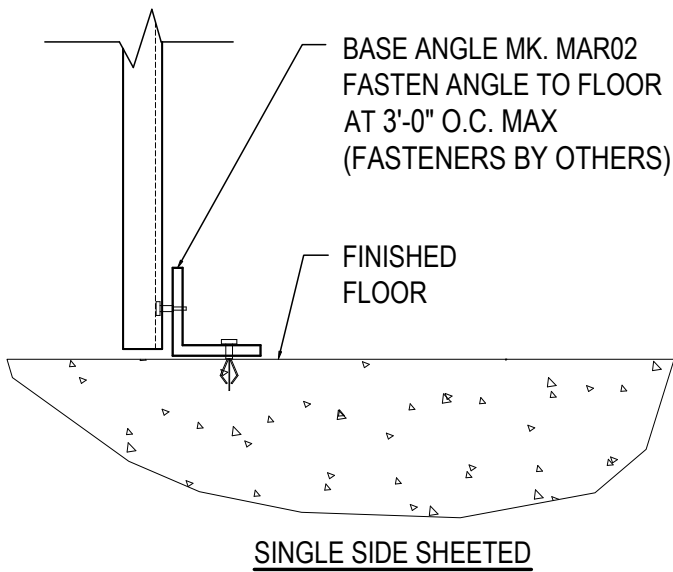
Detailer Notes:

IH0090 - PARTITION WALL BASE CONDITION

[Download the DWG file by clicking here.](#)

NOTE: PANEL SCREWS MUST ENGAGE THE BASE ANGLE / CHANNEL. FIELD NOTCHING OF THE BASE ANGLE / CHANNEL MAY BE REQUIRED AT THE COLUMNS AND AT CORNERS.

CONTINUOUS BASE CHANNEL
8" CHANNEL MK. B8C01
9 1/2" CHANNEL MK. B9C01
12" CHANNEL MK. B2C01
FASTEN CHANNEL TO FLOOR
AT 4'-0" O.C. MAX
(FASTENERS BY OTHERS)



PARTITION WALL BASE CONDITION

IH0090

Detailer Notes: