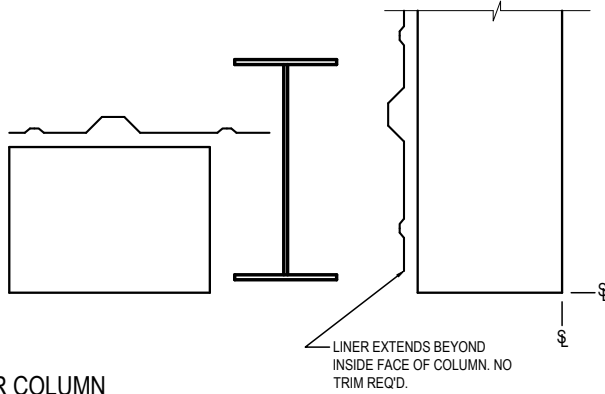


## LINER GENERAL DETAILS

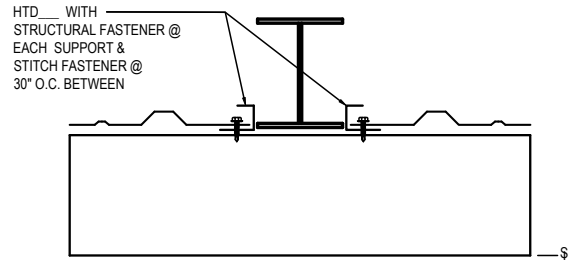
- IA0010 - LINER TERMINATION DETAILS (R-PANEL)
  - IA0020 - LINER TERMINATION DETAILS (A-PANEL)
  - IA0030 - LINER TERMINATION DETAILS (REVERSE R-PANEL)
  - IA0070 - WALL AND CEILING LINER PANEL ERECTION DETAIL
  - IA0075 - WALL LINER PANEL ENDLAP
  - IA0080 - CEILING LINER PANEL ENDLAP
  - IA0090 - PANEL TERMINATION AT WALL
  - IA0100 - CEILING LINER TERMINATION AT RAFTER
-

## IA0010 - LINER TERMINATION DETAILS (R-PANEL)

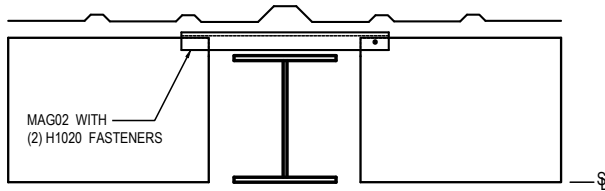
[Download the DWG file by clicking here.](#)



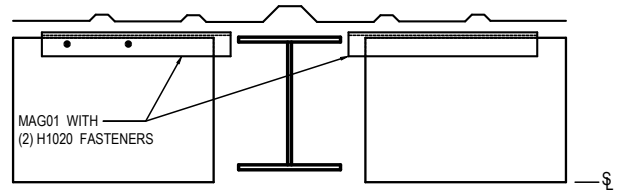
**CORNER COLUMN**



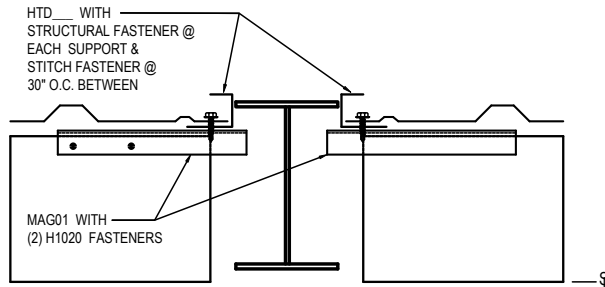
**BYPASS GIRT OR PURLIN**



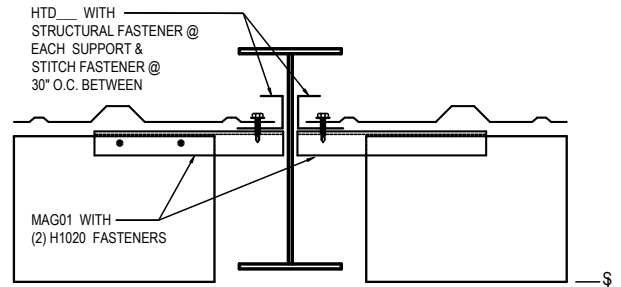
**FLANGE INSET OF GIRT**



**FLANGE CONCEALED BY PANEL**



**FLANGE EVEN WITH PANEL TRIM**



**FLANGE INSIDE PANEL TRIM**

### LINER TERMINATION DETAILS

**FASTENER KEY**  
H1040 - STRUCTURAL FASTENERS  
H1060 - STITCH FASTENERS

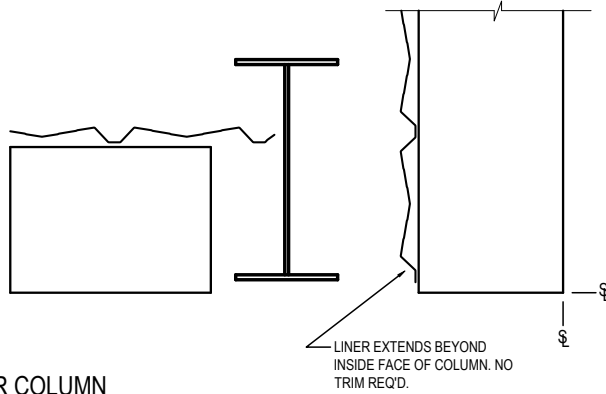
IA0010

### Detailer Notes:

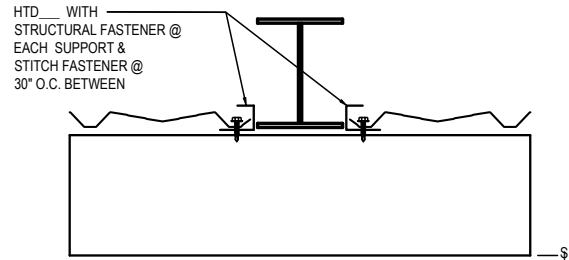
- 1) N/A

## IA0020 - LINER TERMINATION DETAILS (A-PANEL)

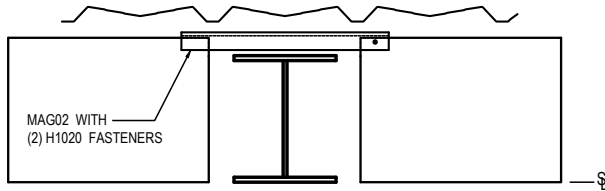
[Download the DWG file by clicking here.](#)



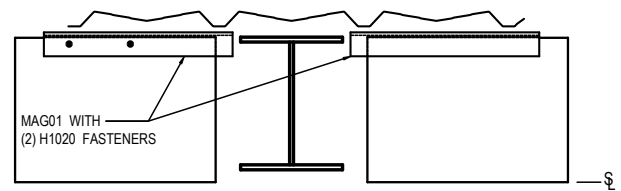
**CORNER COLUMN**



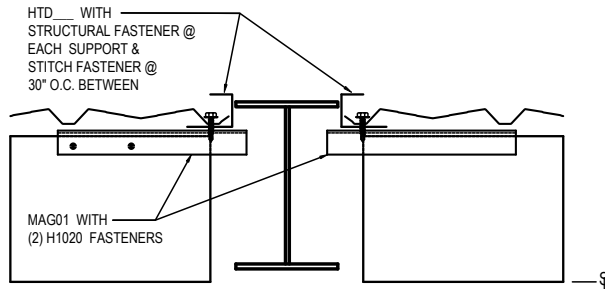
**BYPASS GIRT**



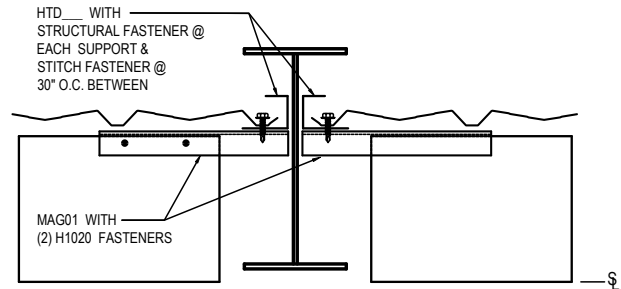
**FLANGE INSET OF GIRT**



**FLANGE CONCEALED BY PANEL**



**FLANGE EVEN WITH PANEL TRIM**



**FLANGE INSIDE PANEL TRIM**

### LINER TERMINATION DETAILS

**FASTENER KEY**  
H1040 - STRUCTURAL FASTENERS  
H1060 - STITCH FASTENERS

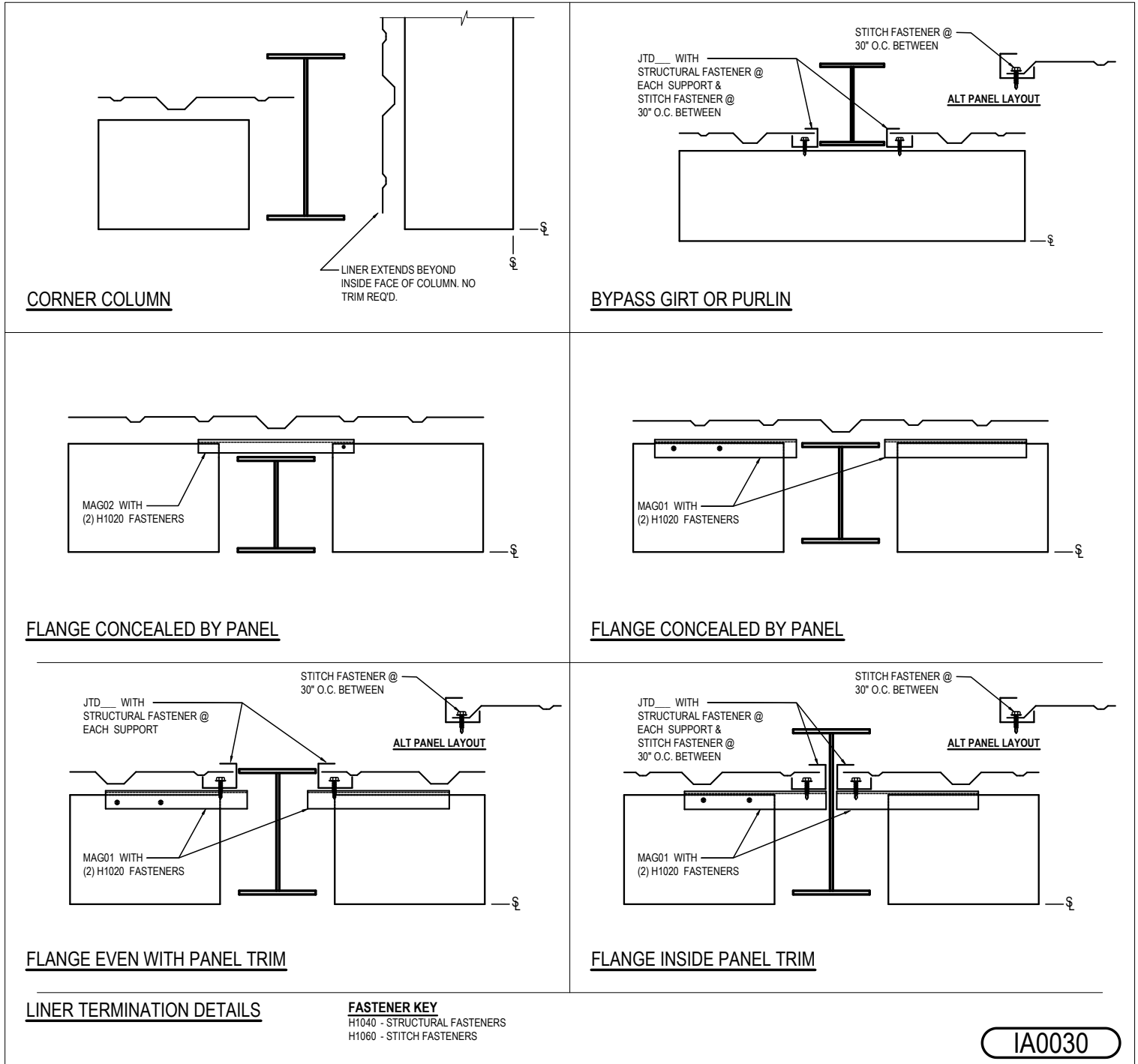
IA0020

### Detailer Notes:

- 1) N/A

## IA0030 - LINER TERMINATION DETAILS (REVERSE R-RANEL)

[Download the DWG file by clicking here.](#)



### Detailer Notes:

- 1) N/A

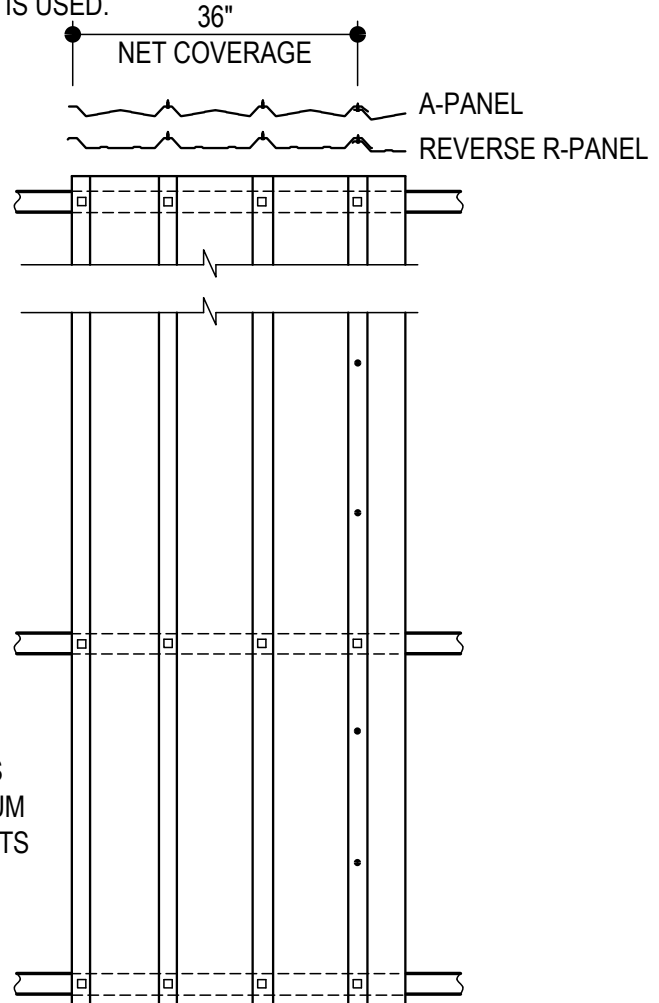
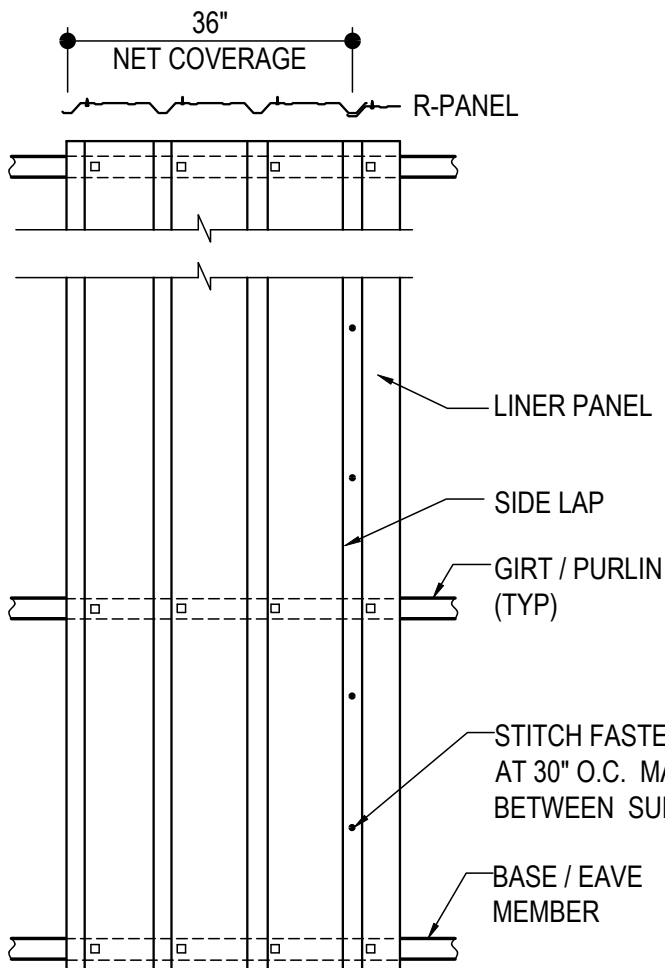
## IA0070 - WALL AND CEILING LINER PANEL ERECTION DETAIL

[Download the DWG file by clicking here.](#)

- H1060 STITCH FASTENER
- ▣ H1040 STRUCTURAL FASTENER

### ERECTOR NOTE:

ERECTION OF THE LINER PANEL MUST BE COORDINATED PROPERLY WITH THE BRACING AND BRACE STRUTS TO ENSURE THAT THE STRUCTURE IS ADEQUATELY BRACED DURING THE ERECTION PROCESS. TEMPORARY REMOVAL OF BRACING AND STRUTS IS ACCEPTABLE FOR LINER ERECTION, PROVIDED ADEQUATE TEMPORARY BRACING IS USED.



## WALL & CEILING LINER ERECTION DETAIL

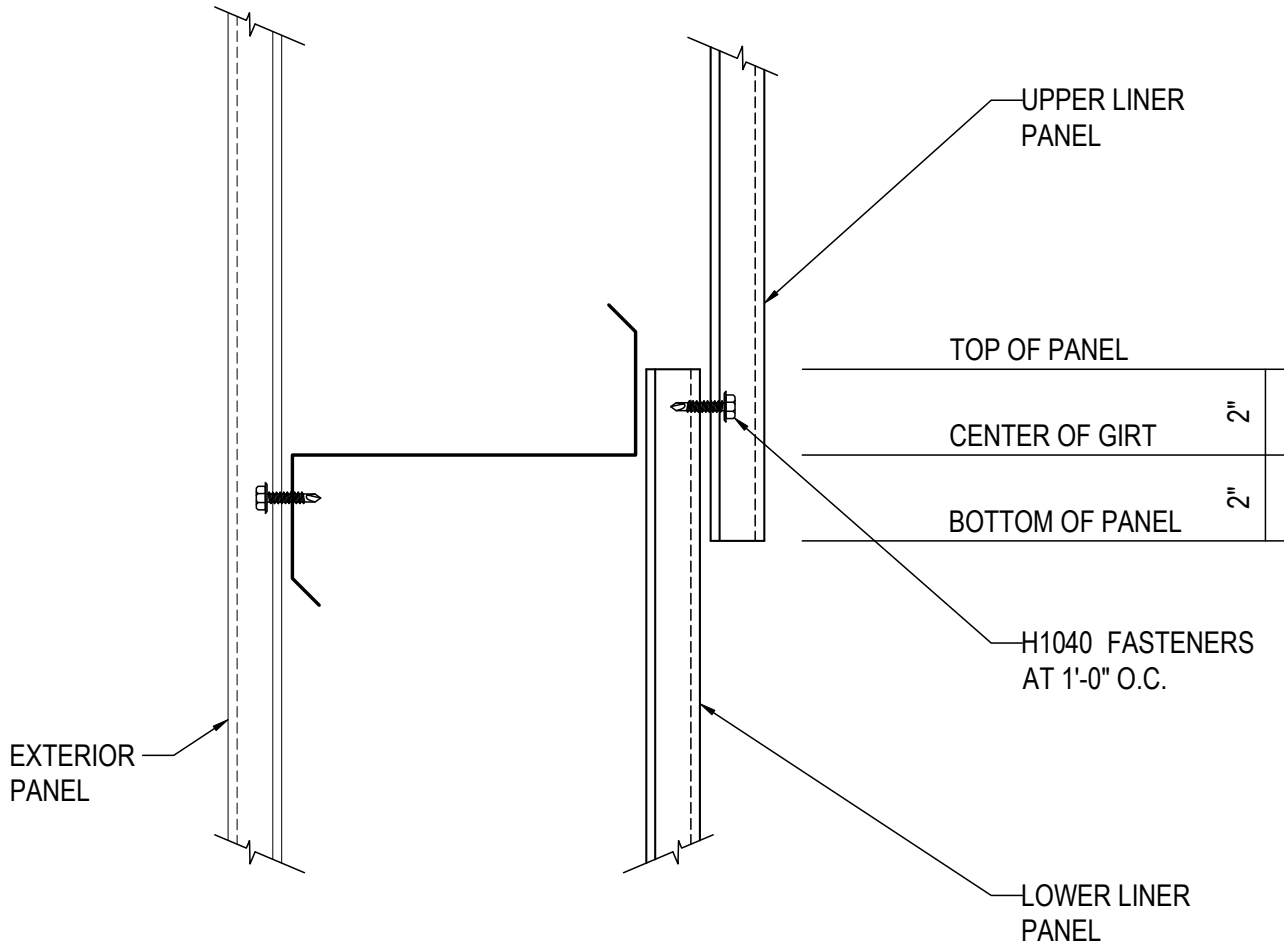
IA0070

### Detailer Notes:

- 1) N/A

## IA0075 - WALL LINER PANEL ENDLAP

[Download the DWG file by clicking here.](#)



## LINER PANEL ENDLAP

ALL STANDARD LINER PANEL TYPES

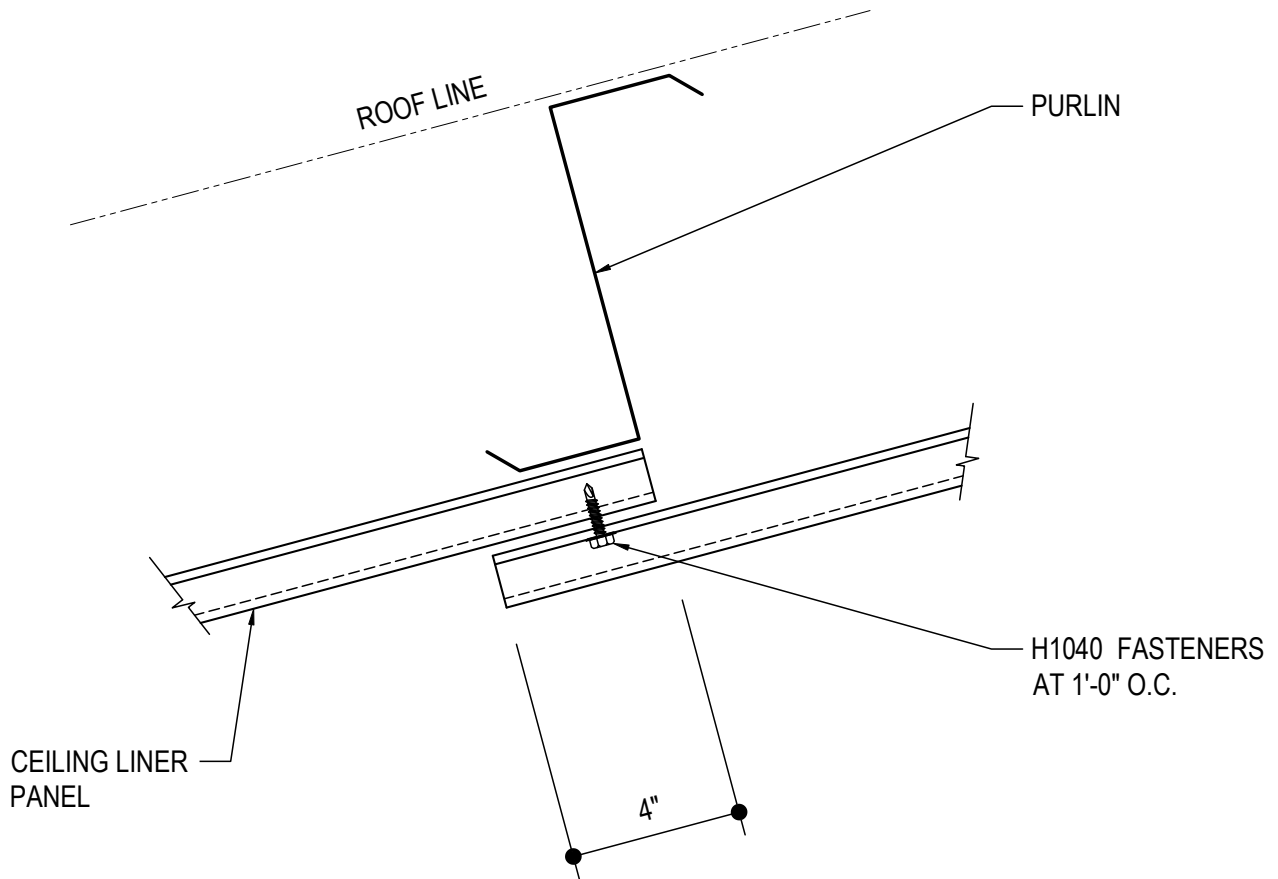
IA0075

### Detailer Notes:

1)

## IA0080 - CEILING LINER PANEL ENDLAP

[Download the DWG file by clicking here.](#)



## CEILING LINER PANEL ENDLAP

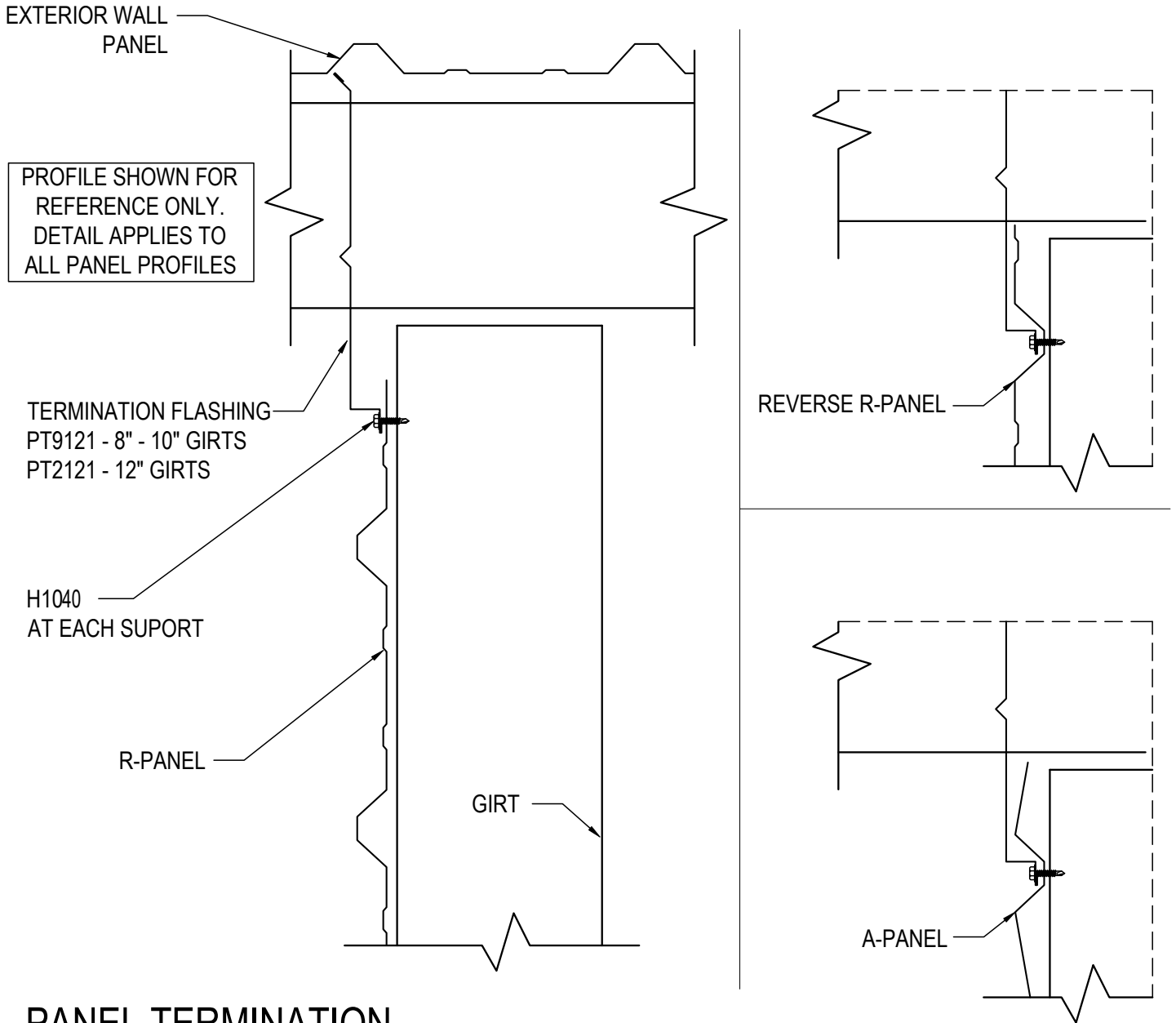
IA0080

### Detailer Notes:

1)

IA0090 - PANEL TERMINATION AT WALL

[Download the DWG file by clicking here.](#)



**PANEL TERMINATION**

FOR ALL STANDARD WALL PANEL TYPES

**IA0090**

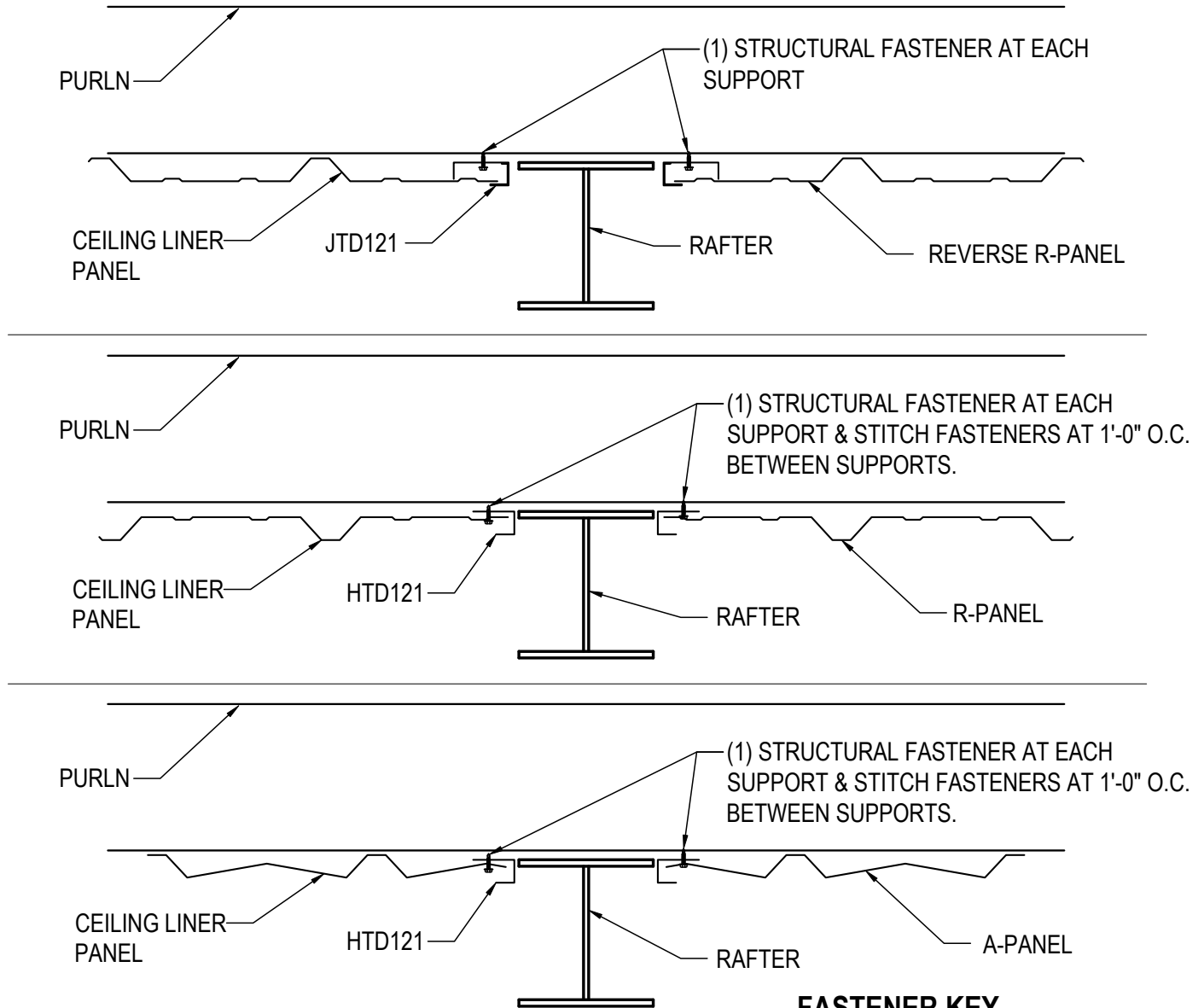
Detailer Notes:

- 1) THIS DETAIL IS USED FOR ALL STANDARD LINER PANELS.
- 2) FOR R-PANEL, VERIFY THAT THE MAJOR RIB LOCATION WILL ALLOW FLASHING TO FILL THE VOID IN THE GIRT SPACING.



## IA0100 - CEILING LINER TERMINATION AT RAFTER

[Download the DWG file by clicking here.](#)



## CEILING LINER TERMINATION AT RAFTER

### FASTENER KEY

H1040 - STRUCTURAL FASTENERS  
H1060 - STITCH FASTENERS

**IA0100**

### Detailer Notes:

- 1) THIS DETAIL IS USED FOR ALL STANDARD LINER PANELS.