

**HIGH EAVE GIRT DETAILS**

- BC0051 - CEE GIRT INTERIOR AN END FRAME DETAIL
- BC0060 - GIRT @ SINGLE CEE EW RAFTER
- BC0061 - CEE GIRT TO ENDWALL RAFTER
- BC0070 - GIRT AT COLD-FORMED RAFTER DETAIL
- BC0071 - CEE GIRT AT COLD-FORMED RAFTER DETAIL
- BC0105 - GIRT AT BYPASS INTERIOR AND END FRAME DETAIL
- BC0106 - GIRT AT SIMPLE SPAN INTERIOR AND END FRAME DETAIL
- BC0115 - GIRT FLUSH OR INSET INTERIOR AND END FRAME DETAIL

**HIGH EAVE STRUT DETAILS**

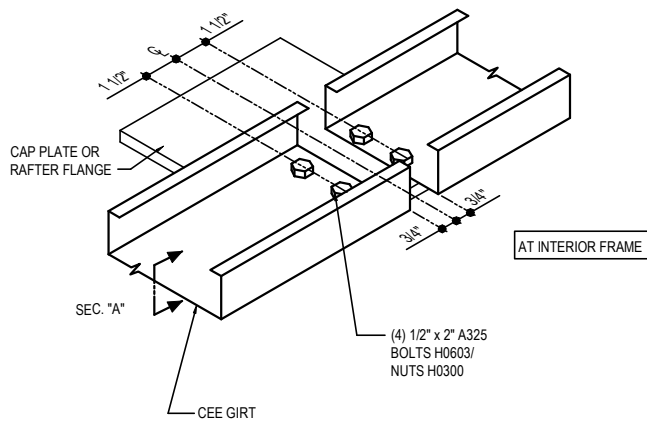
- BC0305 - FLUSH/INSET SW GIRT DETAIL
- BC0306 - BYPASS SW GIRT DETAIL
- BC0310 - TERMINATION BYPASS SW GIRT DETAIL
- BC0315 - FLUSH/INSET WITH STRUT PLATE
- BC0316 - BYPASS SW GIRT WITH STRUT PLATE DETAIL
- BC0325 - FLUSH/INSET SW GIRT AT RIGID FRAME ENDWALL DETAIL
- BC0326 - AT POST AND BEAM ENDWALL DETAIL
- BC0327 - BYPASS SW GIRT AT RIGID FRAME ENDWALL DETAIL
- BC0328 - FLUSH/INSET SW GIRT AT RIGID FRAME ENDWALL DETAIL
- BC0345 - TO COLD-FORMED ENDWALL RAFTER DETAIL
- BC0455 - EQUAL LEG HIGH EAVE STRUT AT COLUMN DETAIL

**R-BOOST DETAILS**

- BC2000-HIGH EAVE MEMBER FOR R-Boost™
-

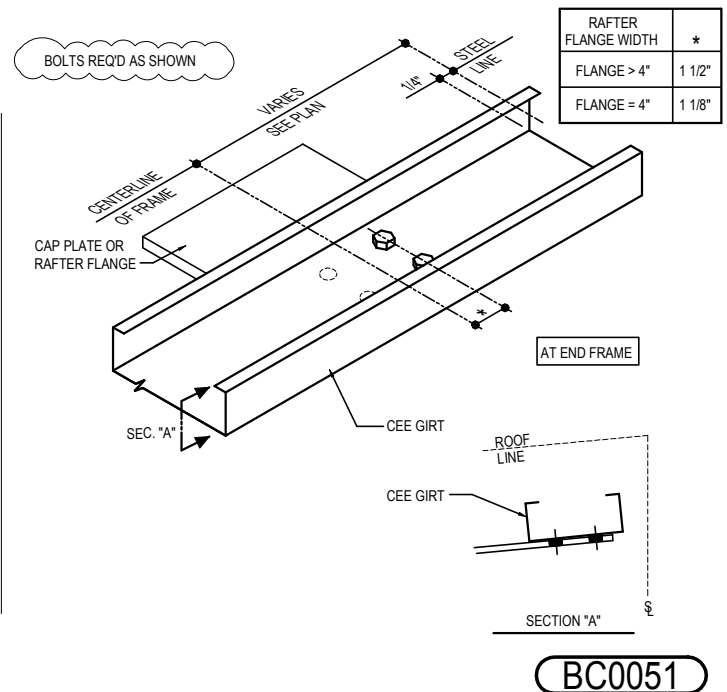
## BC0051 - HIGH EAVE CEE GIRT INTERIOR AN END FRAME DETAIL

[Download the DWG file by clicking here.](#)



### HIGH EAVE CEE GIRT INTERIOR AND END FRAME

LEAN-TO WITH OPEN COMMON WALL  
SEE ERECTOR NOTE FOR TYP. WASHER REQUIREMENTS



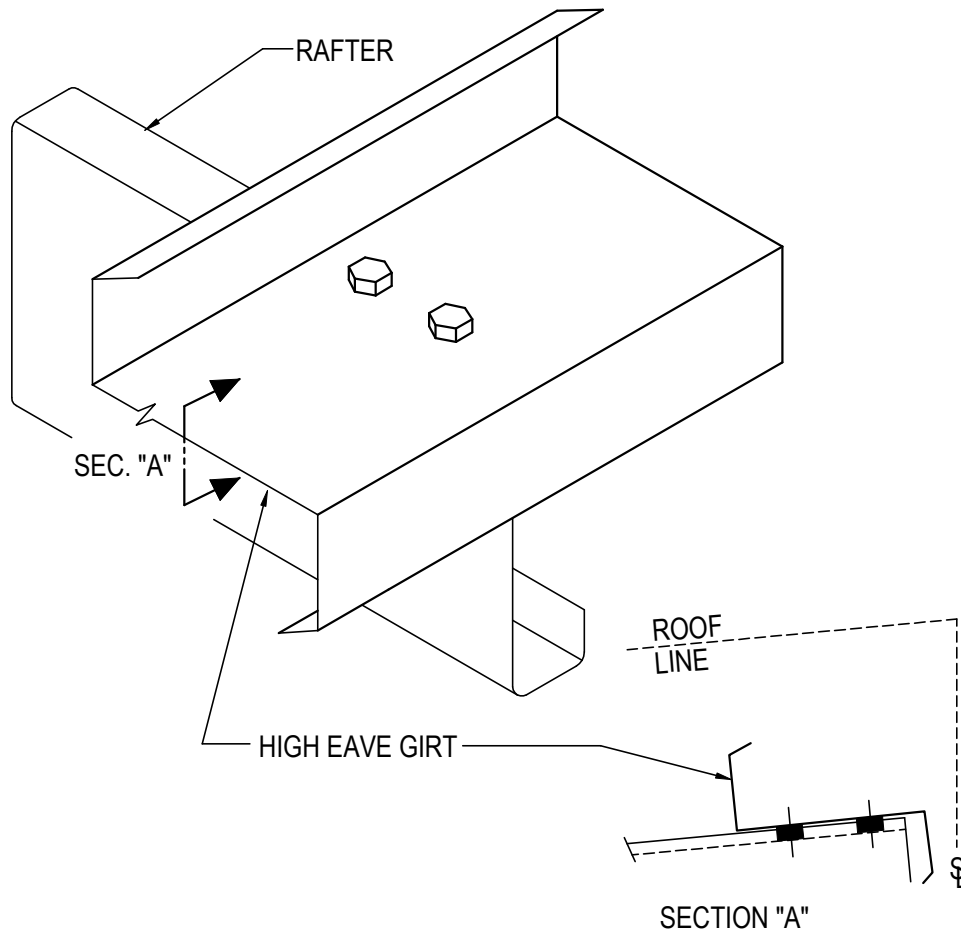
### Detailer Notes:

- 1) N/A

BC0060 - HIGH EAVE GIRT @ SINGLE CEE EW RAFTER

[Download the DWG file by clicking here.](#)

BOLTS REQ'D AS SHOWN



## HIGH EAVE GIRT @ SINGLE CEE EW RAFTER

HIGH EAVE AT COLD-FORMED RAFTER

USE (2) 1/2" x 1 1/4" A307 BOLTS H0500/NUTS H0300

REFERENCE ERECTOR NOTE FOR TYP. WASHER REQUIREMENTS

**BC0060**

Detailer Notes:

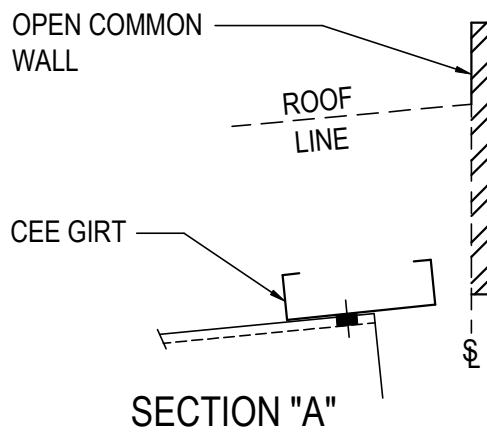
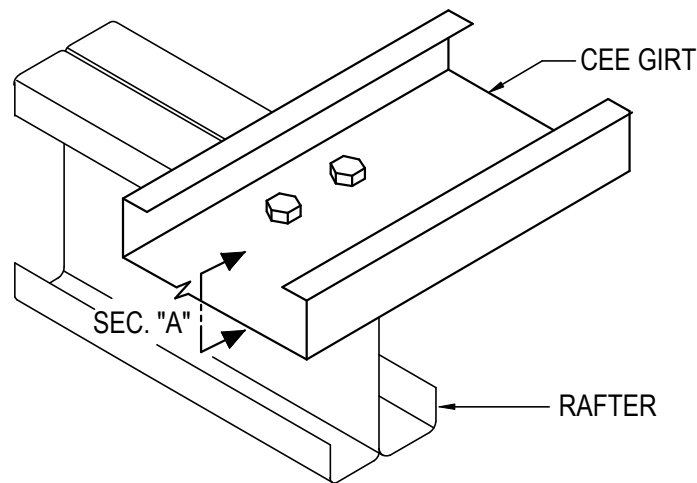
1) USE THIS DETAIL WITH THE FOLLOWING LIMITATIONS:

- 8" CF RAFTERS: ROOF SLOPE  $\leq$  2:12
- 12" CF RAFTERS: ROOF SLOPE  $\leq$  1:12

BC0061 - CEE GIRT TO ENDWALL RAFTER

[Download the DWG file by clicking here.](#)

BOLTS REQ'D ONLY AS SHOWN,  
NOT @ ALL HOLES



## CEE GIRT TO ENDWALL RAFTER

LEAN-TO WITH OPEN COMMON WALL  
HIGH EAVE CONNECTION AT COLD-FORMED RAFTER  
USE (2) 1/2" X 1 1/4" A307 BOLTS H0500/NUTS H0400 U.N.O.  
SEE ERECTOR NOTE FOR TYP. WASHER REQUIREMENTS

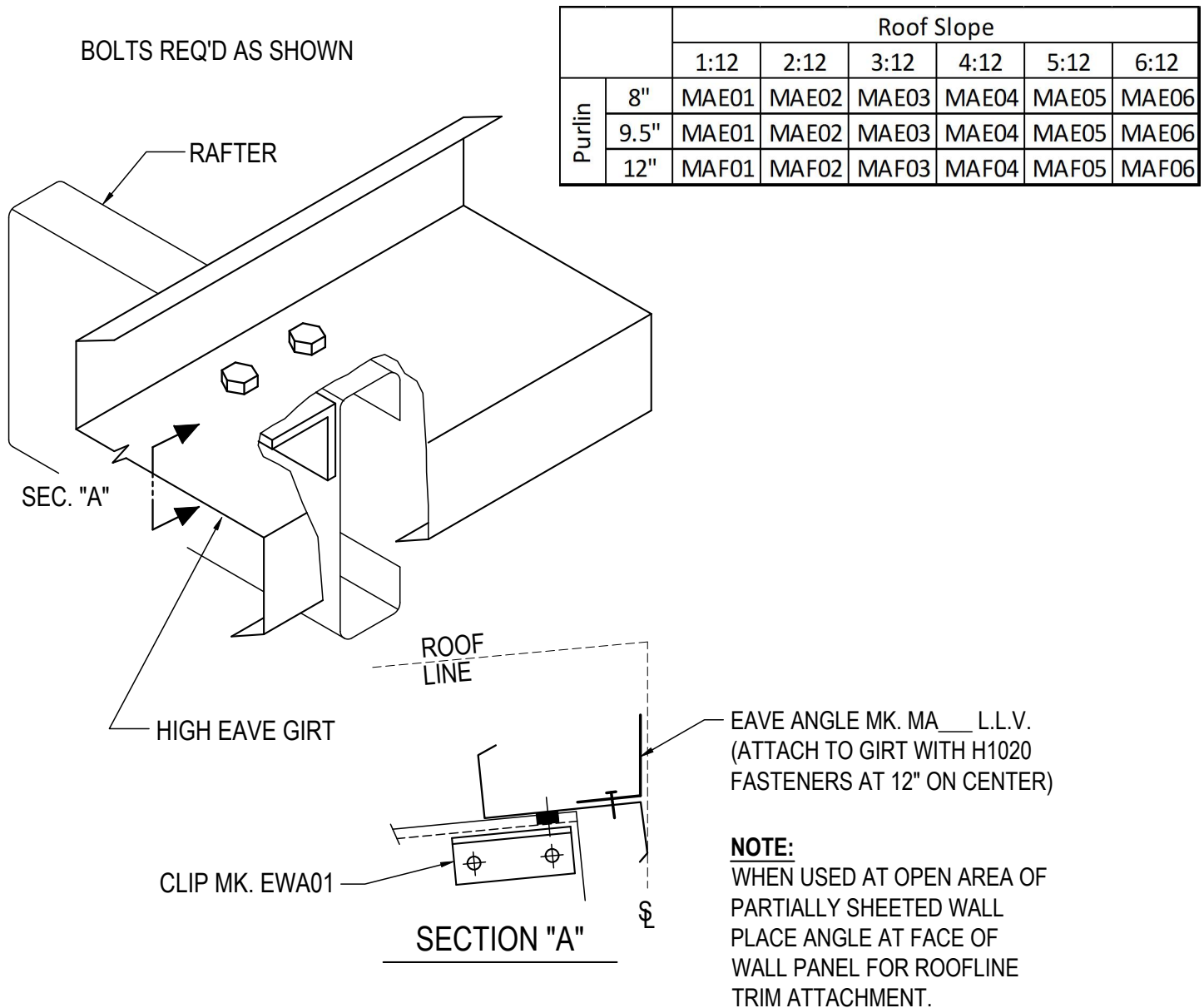
**BC0061**

Detailer Notes:

- 1) THIS DETAIL IS INTENDED FOR NO WALL PANEL CONDITIONS ONLY. HIGH EAVE CEE GIRT USED AS INSULATION TIE-OFF ONLY AT OPEN COMMON WALL.

## BC0070 - HIGH EAVE GIRT AT COLD-FORMED RAFTER DETAIL

[Download the DWG file by clicking here.](#)



## HIGH EAVE GIRT

HIGH EAVE AT COLD-FORMED RAFTER  
USE (4) 1/2" x 1 1/4" A307 BOLTS H0500/NUTS H0400  
REFERENCE ERECTOR NOTE FOR TYP. WASHER REQUIREMENTS

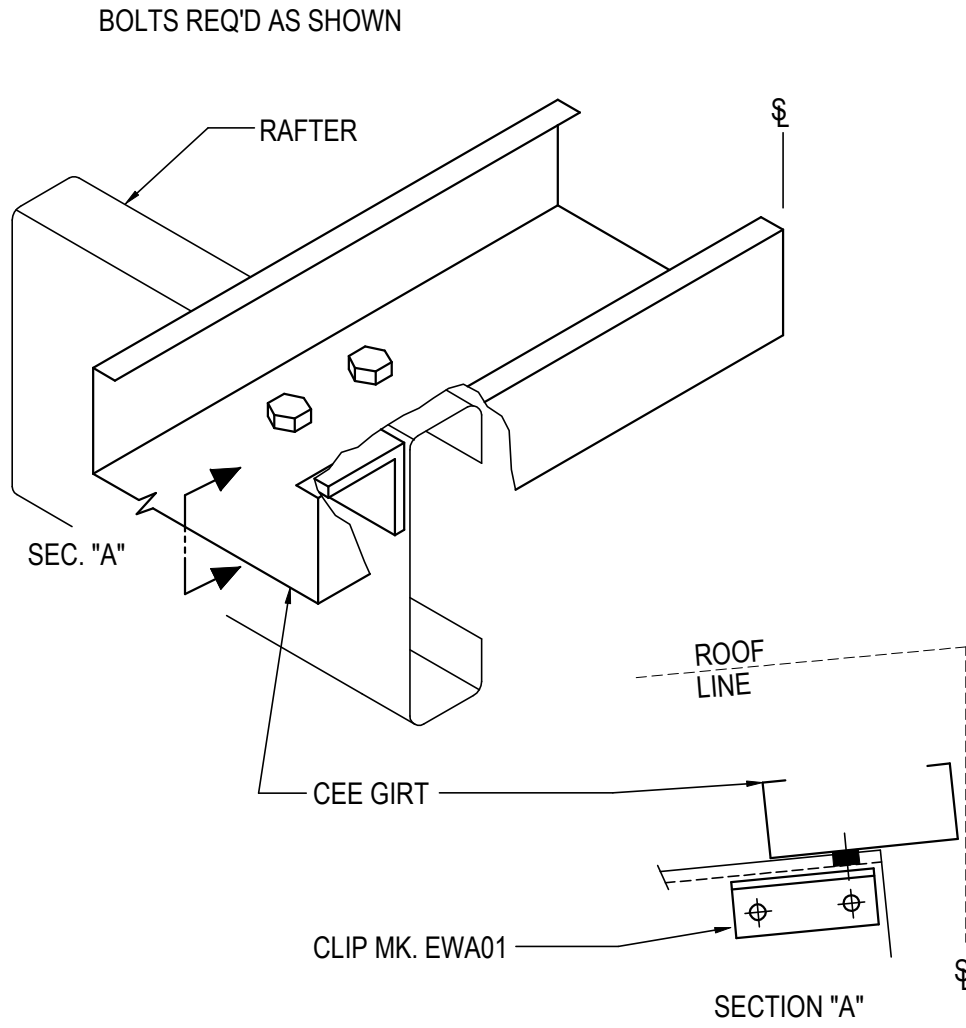
**BC0070**

### Detailer Notes:

1) N/A

BC0071 - HIGH EAVE CEE GIRT AT COLD-FORMED RAFTER DETAIL

[Download the DWG file by clicking here.](#)



## CEE GIRT TO COLD FORMED RAFTER

HIGH EAVE AT COLD-FORMED RAFTER >4:12 ROOF SLOPE  
USE (4) 1/2" x 1 1/4" A307 BOLTS H0500/NUTS H0400  
REFERENCE ERECTOR NOTE FOR TYP. WASHER REQUIREMENTS

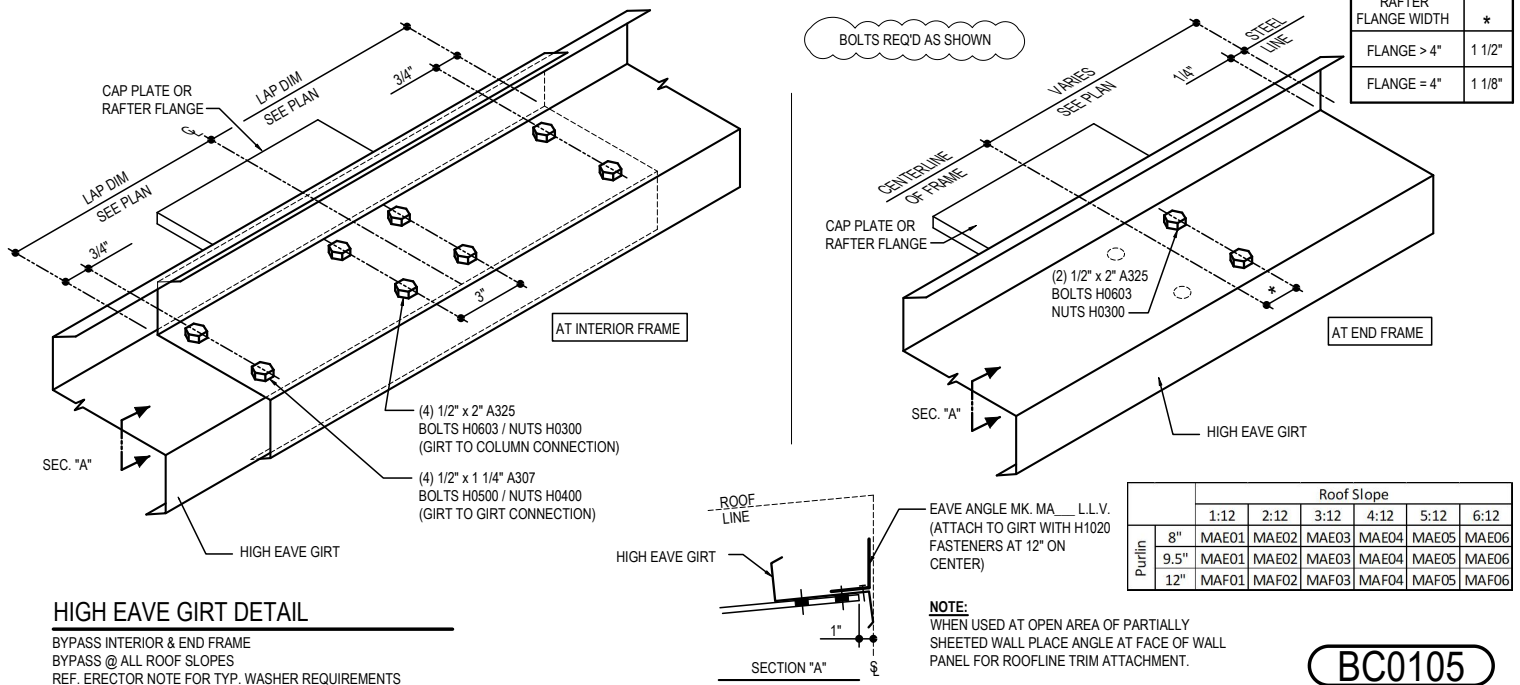
**BC0071**

Detailer Notes:

- 1) SEE ROOF SHEETING DETAILS TO DETERMINE IF MAF\_\_\_, MAR\_\_\_, MAL\_\_\_ OR MAJ\_\_\_ ANGLE IS REQUIRED.

## BC0105 - HIGH EAVE GIRT AT BYPASS INTERIOR AND END FRAME DETAIL

[Download the DWG file by clicking here.](#)

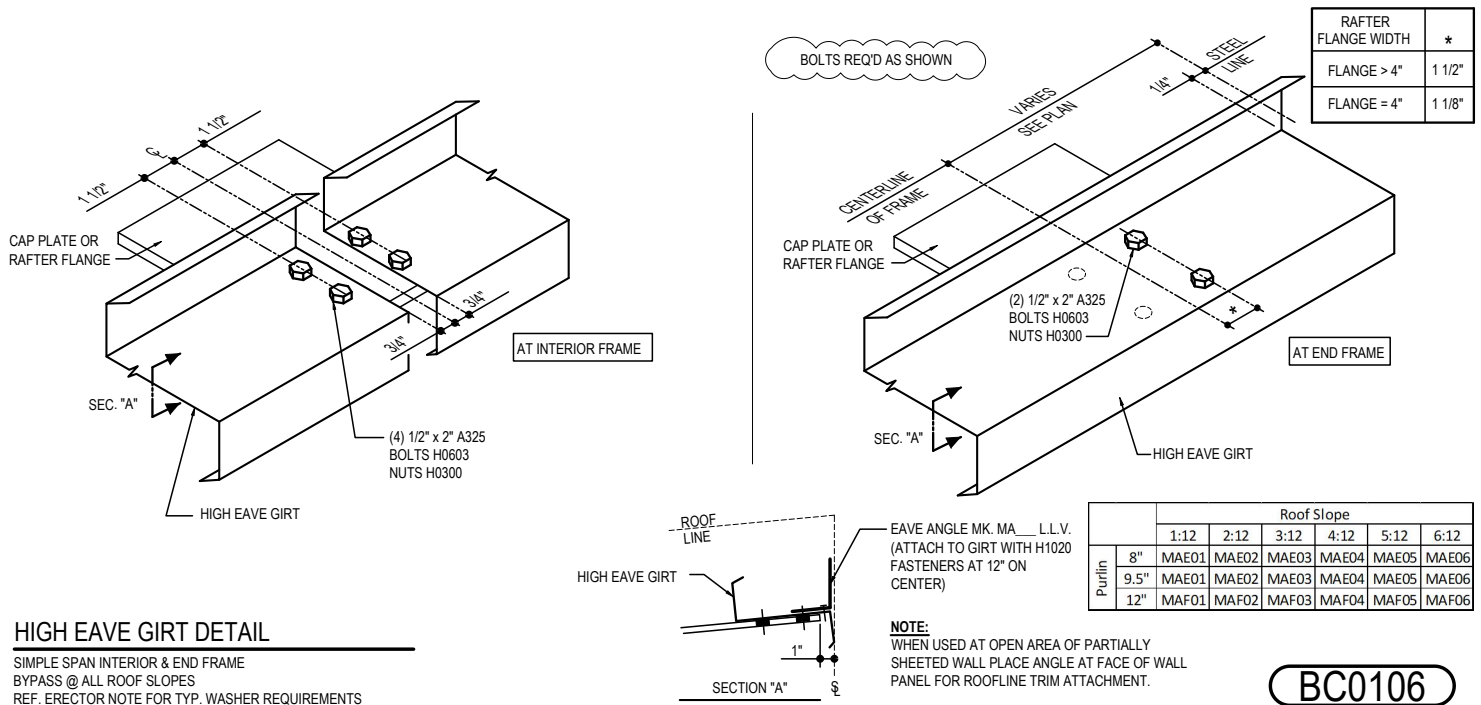


### Detailer Notes:

1) N/A

## BC0106 - HIGH EAVE GIRT AT SIMPLE SPAN INTERIOR AND END FRAME DETAIL

[Download the DWG file by clicking here.](#)



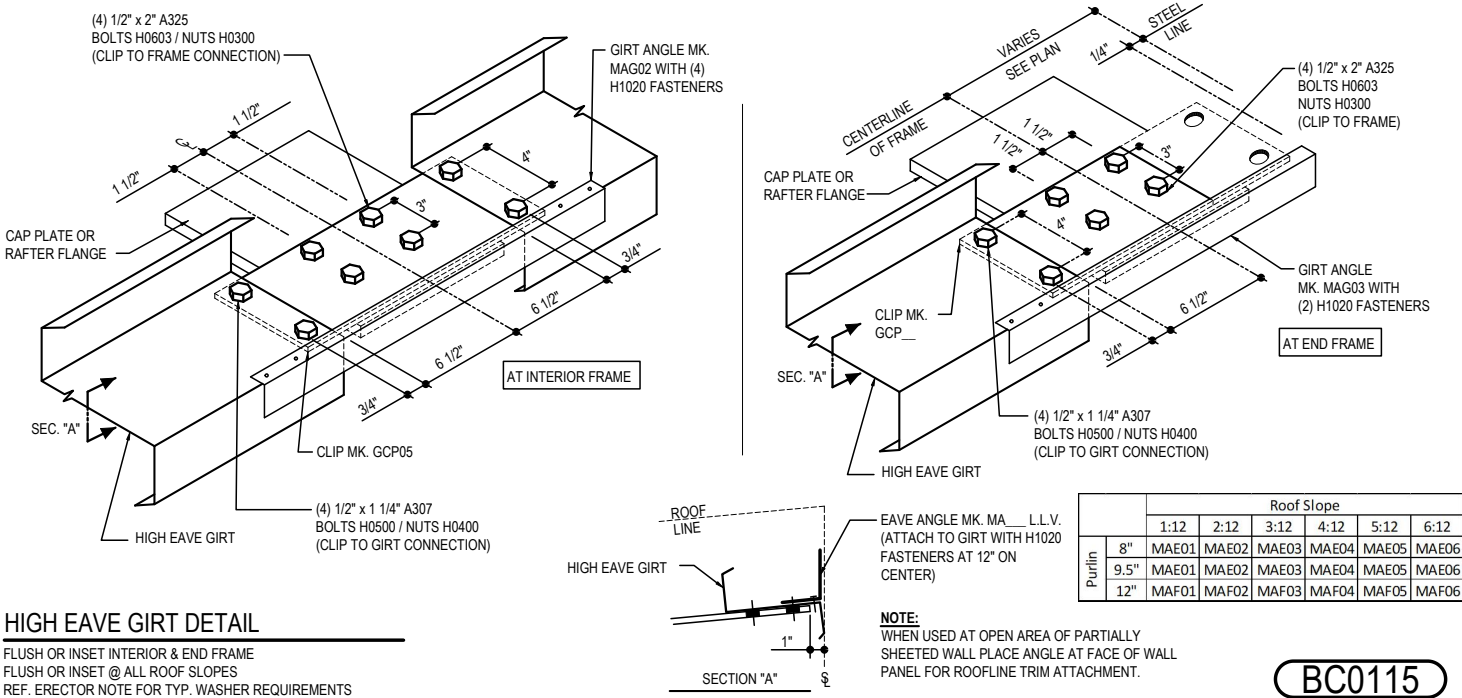
### Detailer Notes:

- 1) N/A



BC0115 - HIGH EAVE GIRT FLUSH OR INSET INTERIOR AND END FRAME DETAIL

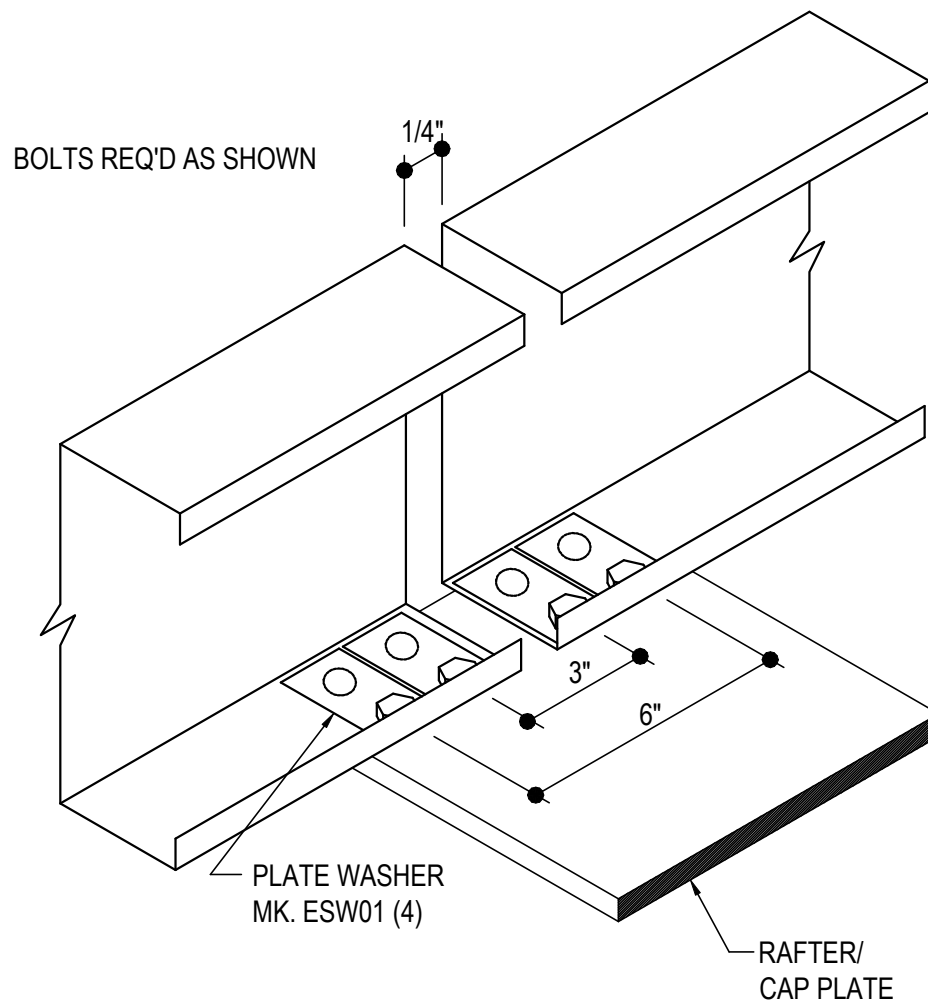
[Download the DWG file by clicking here.](#)



Detailer Notes:  
1) N/A

BC0305 - HIGH EAVE STRUT FLUSH/INSET SW GIRT DETAIL

[Download the DWG file by clicking here.](#)



## EAVE STRUT

HIGH EAVE FLUSH/INSET SW GIRT CONDITION  
USE (4) 1/2" X 2" A325 BOLT H0603/NUT H0300 U.N.O.

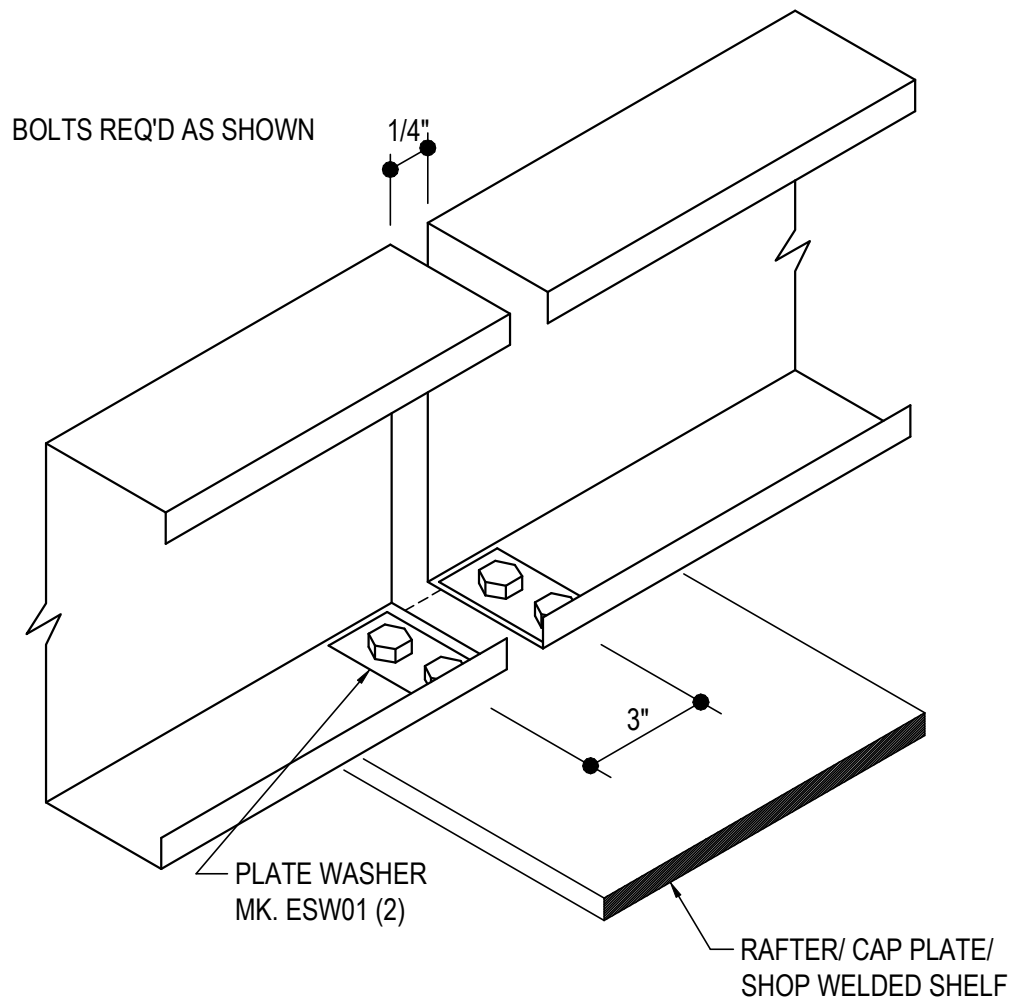
**BC0305**

Detailer Notes:

- 1) 8" MIN. CAP PLATE

BC0306 - HIGH EAVE STRUT BYPASS SW GIRT DETAIL

[Download the DWG file by clicking here.](#)



## EAVE STRUT

HIGH EAVE BYPASS SW GIRT CONDITION  
USE (4) 1/2" X 2" A325 BOLT H0603/NUT H0300 U.N.O.

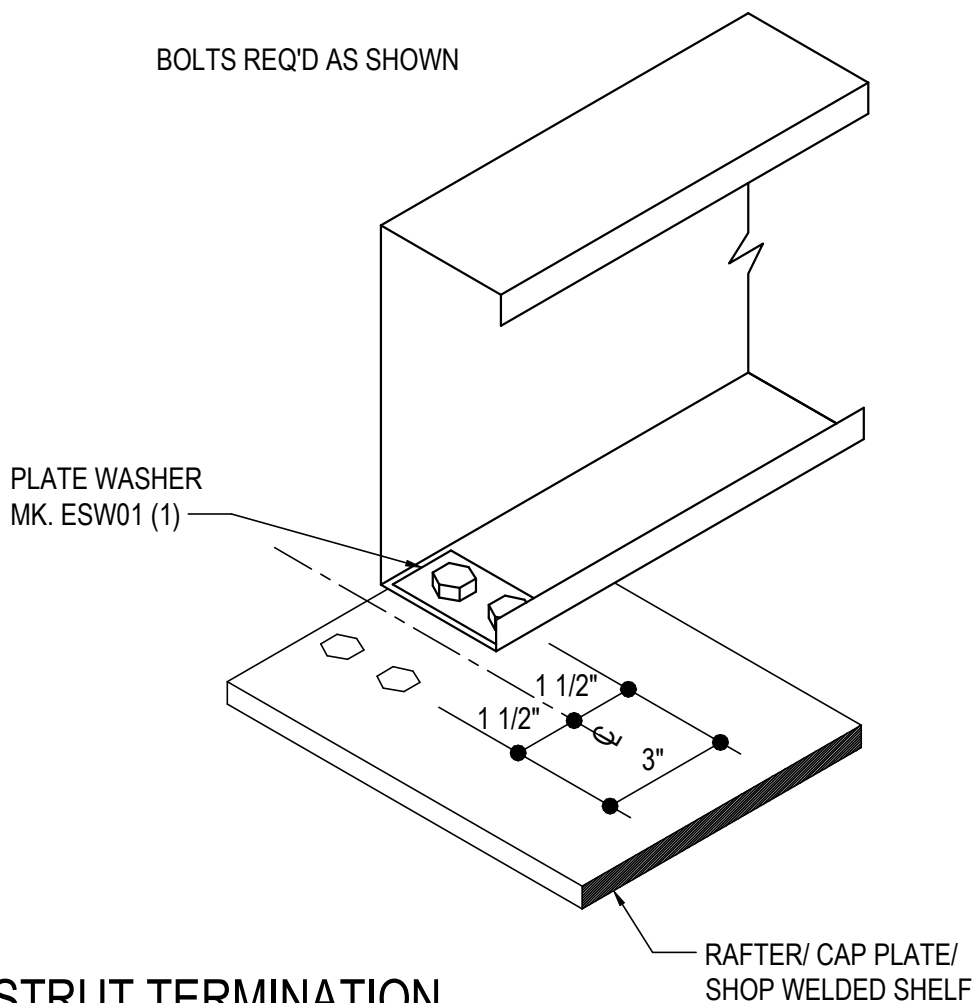
**BC0306**

Detailer Notes:

1) N/A

BC0310 - HIGH EAVE STRUT TERMINATION BYPASS SW GIRT DETAIL

[Download the DWG file by clicking here.](#)



## EAVE STRUT TERMINATION

HIGH EAVE BYPASS SW GIRT CONDITION  
USE (2) 1/2" X 2" A325 BOLT H0603/NUT H0300 U.N.O.

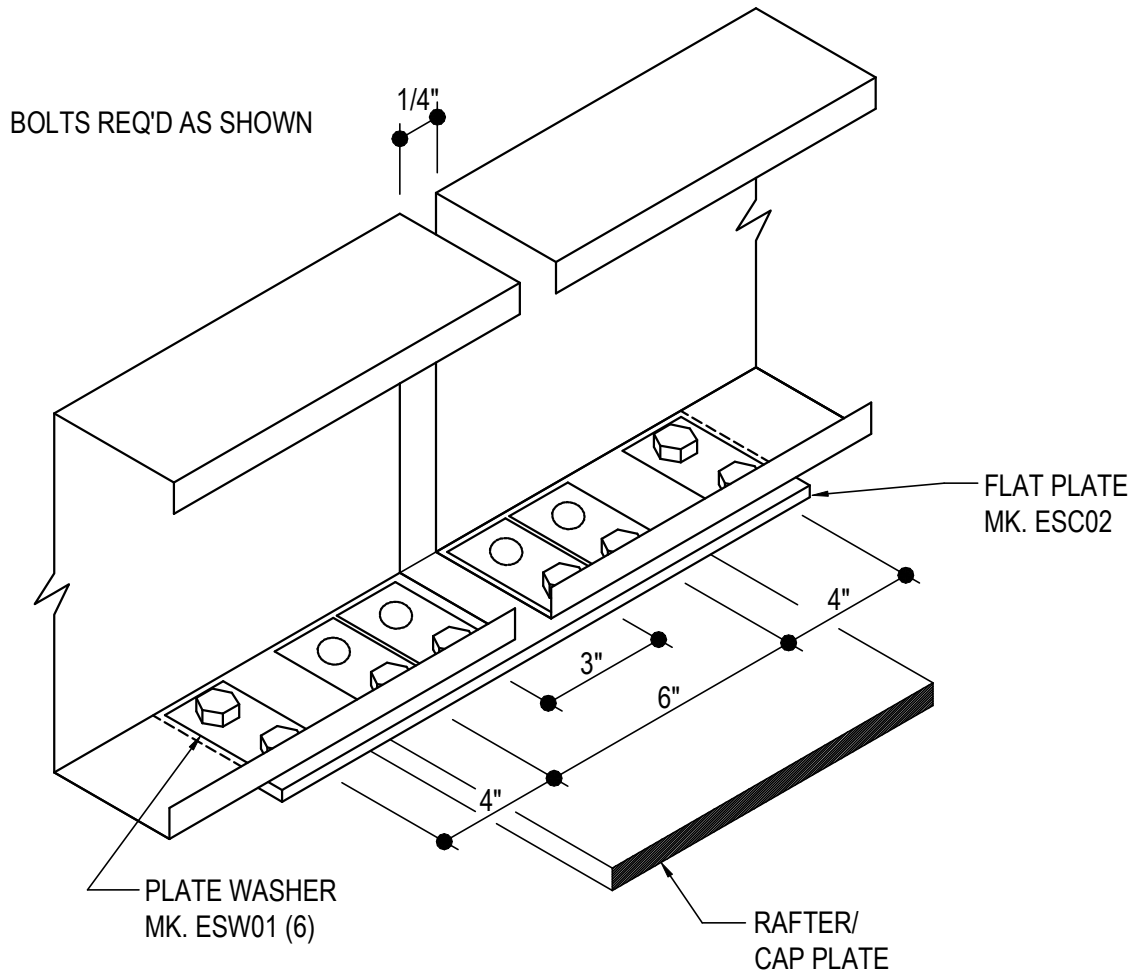
**BC0310**

Detailer Notes:

1) N/A

BC0315 - HIGH EAVE STRUT FLUSH/INSET WITH STRUT PLATE

[Download the DWG file by clicking here.](#)



**HIGH EAVE STRUT**

FLUSH/INSET WITH STRUT PLATE

NOTE: USE (8) 1/2" x 2" A325 BOLTS H0603/NUTS H0300

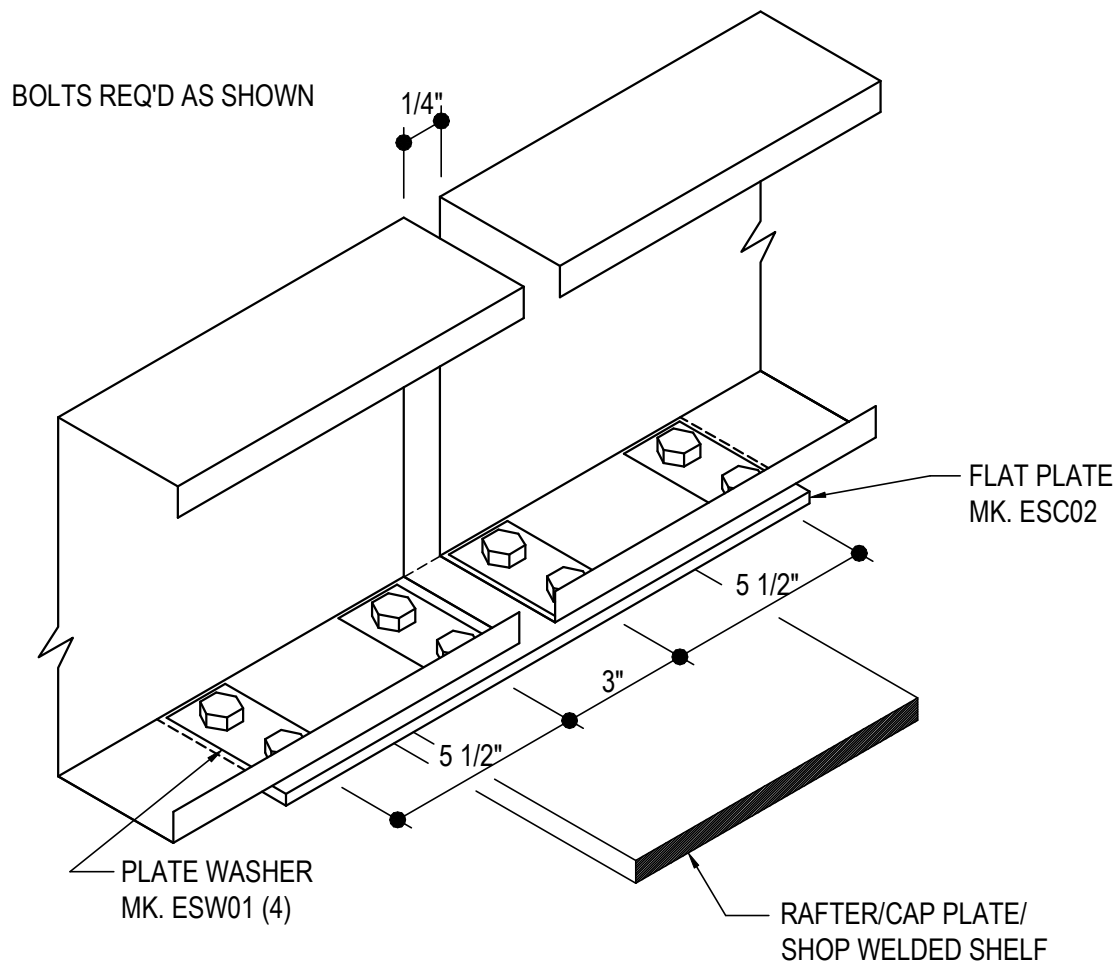
**BC0315**

Detailer Notes:

- 1) 8" MIN. CAP PLATE

BC0316 - HIGH EAVE STRUT BYPASS SW GIRT WITH STRUT PLATE DETAIL

[Download the DWG file by clicking here.](#)



## HIGH EAVE STRUT

HIGH EAVE BYPASS SW GIRT CONDITION WITH STRUT PLATE  
USE (8) 1/2" X 2" A325 BOLT H0603/NUT H0300 U.N.O.

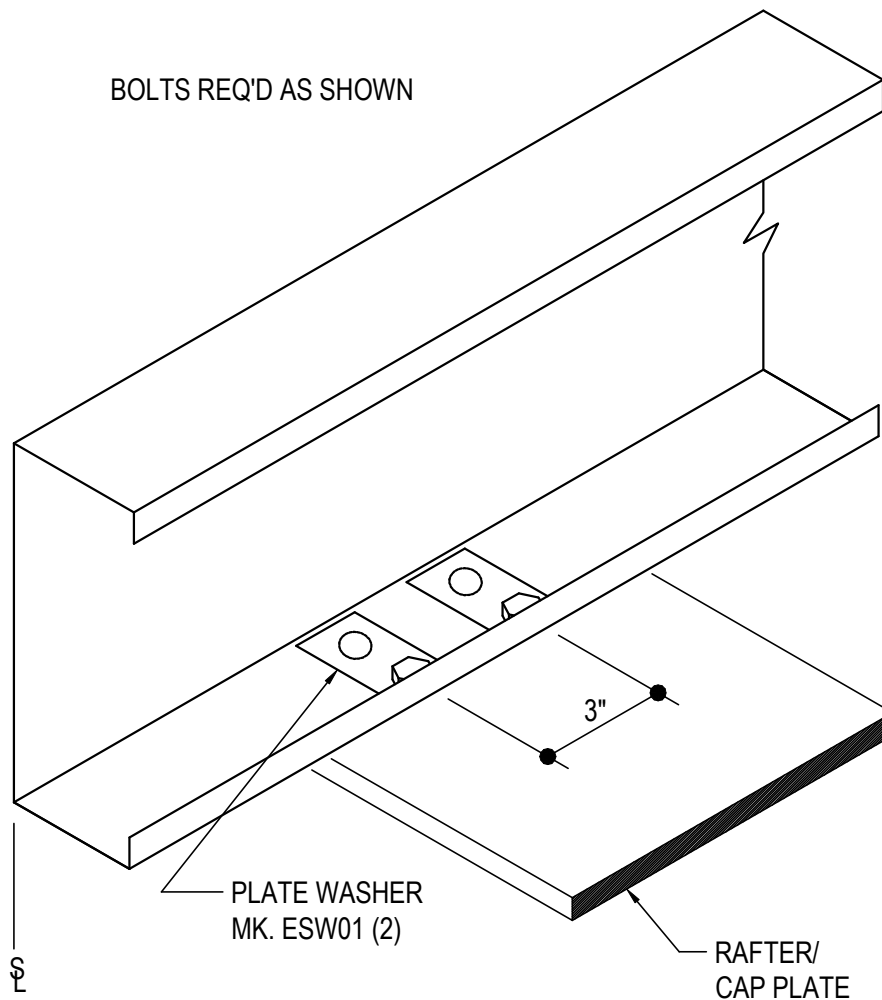
**BC0316**

Detailer Notes:

1) N/A

BC0325 - HIGH EAVE STRUT FLUSH/INSET SW GIRT AT RIGID FRAME ENDWALL DETAIL

[Download the DWG file by clicking here.](#)



## EAVE STRUT

HIGH EAVE - FLUSH, INSET SW GIRT CONDITION AT RIGID FRAME ENDWALL  
USE (2) 1/2" X 2" A325 BOLT H0603/NUT H0300 U.N.O.

**BC0325**

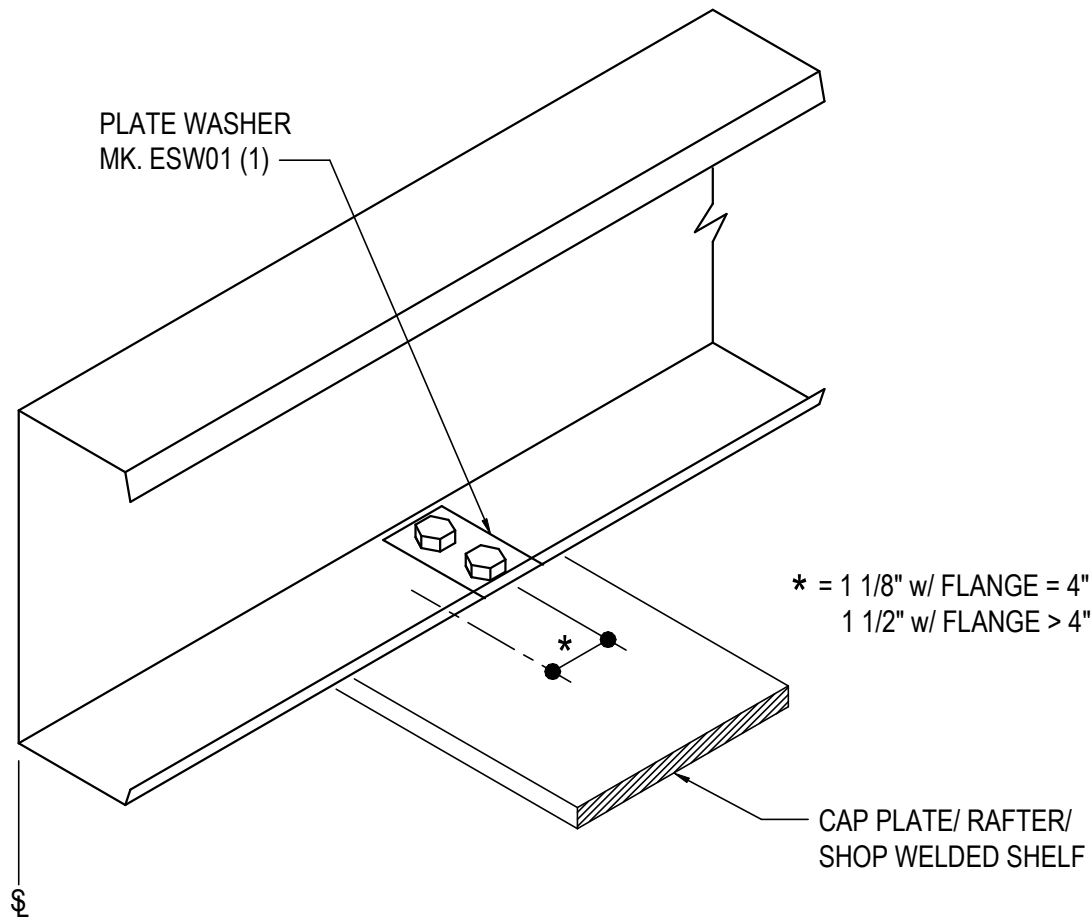
Detailer Notes:

1) N/A

BC0326 - HIGH EAVE STRUT AT POST AND BEAM ENDWALL DETAIL

[Download the DWG file by clicking here.](#)

BOLTS REQ'D ONLY AS SHOWN



**HIGH EAVE STRUT AT POST & BEAM ENDWALL**

USE (2) 1/2" x 2" A325 BOLT H0603/NUT H0300

**BC0326**

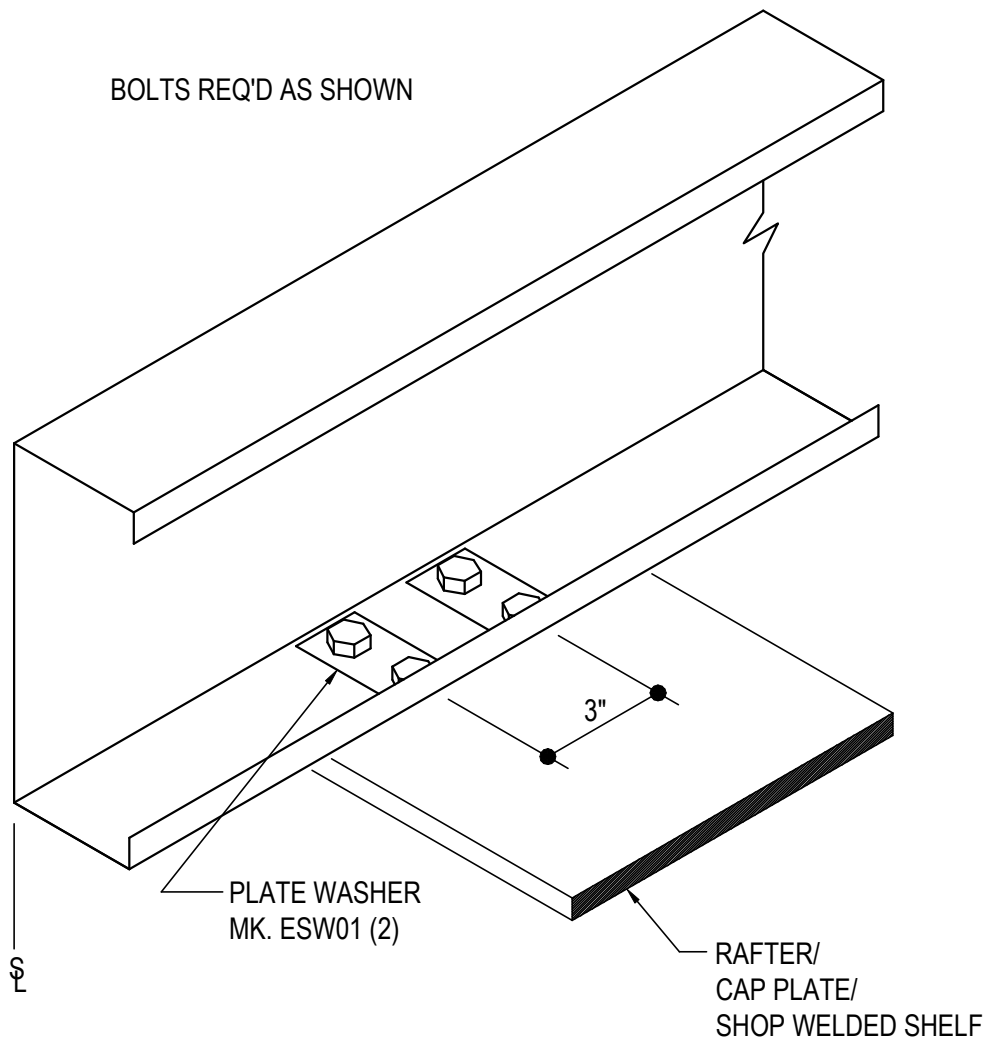
Detailer Notes:

1) N/A



BC0327 - HIGH EAVE STRUT BYPASS SW GIRT AT RIGID FRAME ENDWALL DETAIL

[Download the DWG file by clicking here.](#)



## EAVE STRUT AT RIGID FRAME ENDWALL

HIGH EAVE - BYPASS SW GIRT CONDITION  
USE (4) 1/2" X 2" A325 BOLT H0603/NUT H0300 U.N.O.

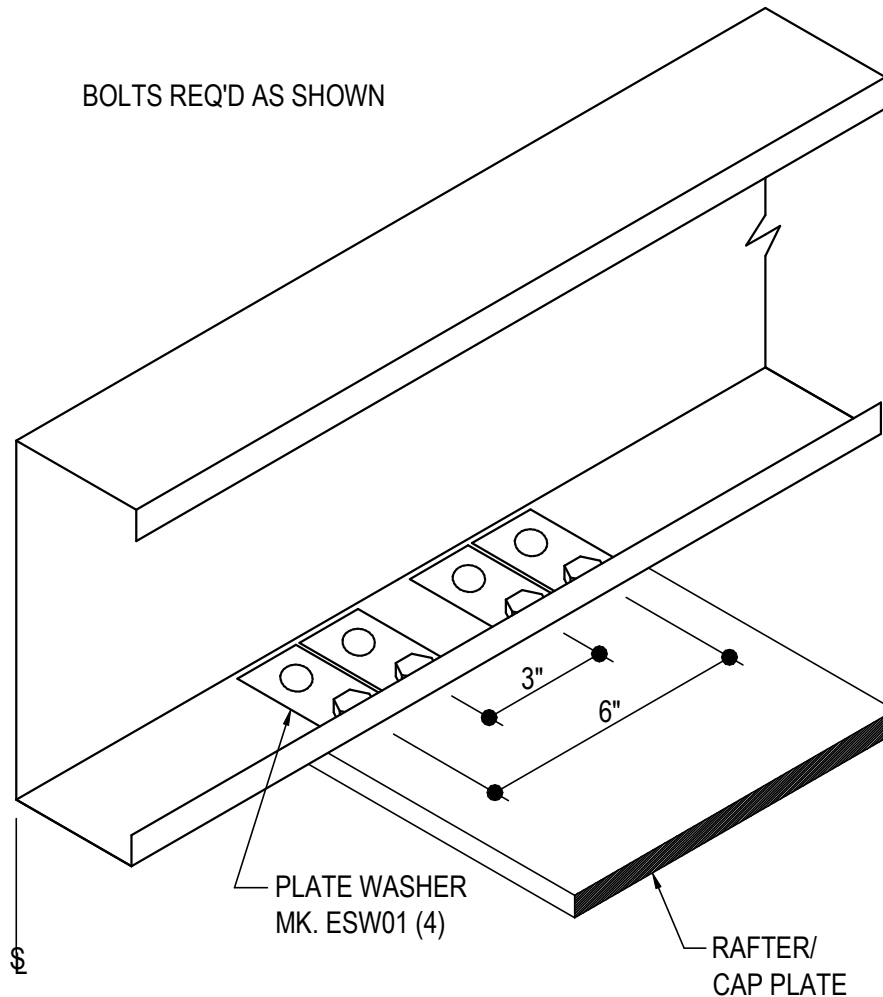
**BC0327**

Detailer Notes:

1) N/A

BC0328 - HIGH EAVE STRUT FLUSH/INSET SW GIRT AT RIGID FRAME ENDWALL DETAIL

[Download the DWG file by clicking here.](#)



## EAVE STRUT AT RIGID FRAME ENDWALL

HIGH EAVE FLUSH/INSET SW GIRT CONDITION  
USE (4) 1/2" X 2" A325 BOLT H0603/NUT H0300 U.N.O.

**BC0328**

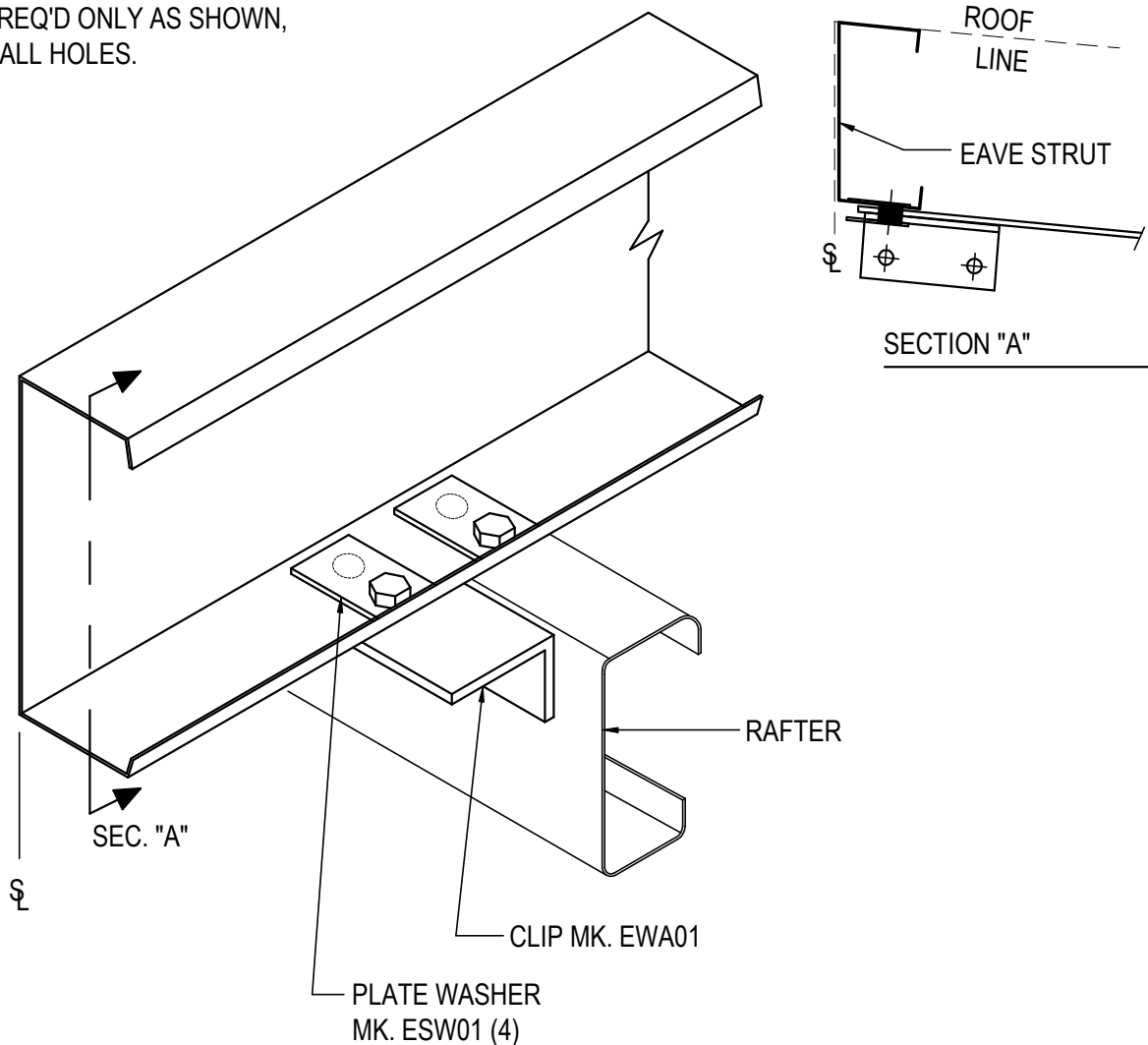
Detailer Notes:

- 1) MIN. 8" FLANGE CAP PLATE

## BC0345 - HIGH EAVE STRUT TO COLD-FORMED ENDWALL RAFTER DETAIL

[Download the DWG file by clicking here.](#)

BOLTS REQ'D ONLY AS SHOWN,  
NOT @ ALL HOLES.



## HIGH EAVE STRUT TO ENDWALL RAFTER

HIGH EAVE COLD-FORMED EW CONDITION  
USE (4) 1/2" X 2" A325 BOLT H0603/NUT H0300  
SEE ERECTOR NOTE FOR TYP. WASHER REQUIREMENTS

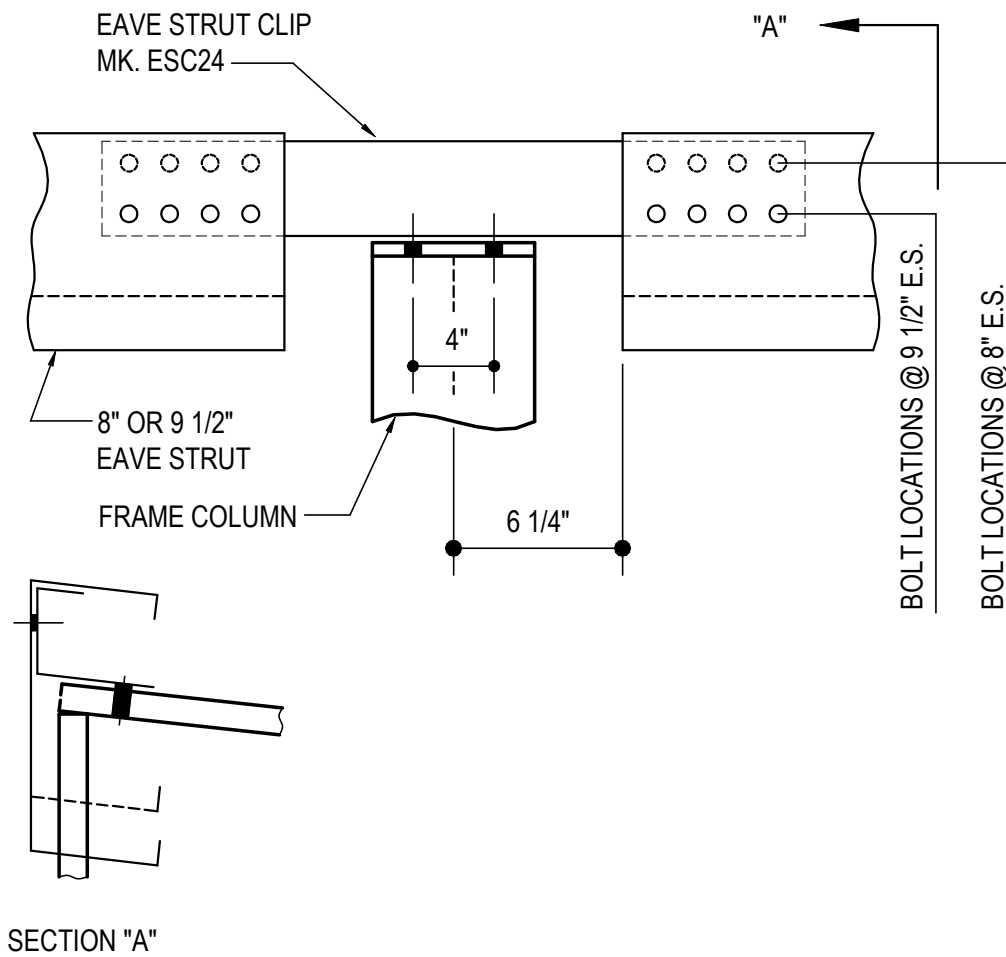
**BC0345**

### Detailer Notes:

- 1) DETAIL NOT APPLICABLE ON ROOF SLOPES  $\geq 2:12$

BC0455 - EQUAL LEG HIGH EAVE STRUT AT COLUMN DETAIL

[Download the DWG file by clicking here.](#)



**EQ LEG HIGH EAVE STRUT AT COL**

USE (10) 1/2" X 2" A325 BOLTS H0603/NUTS H0300 U.N.O.

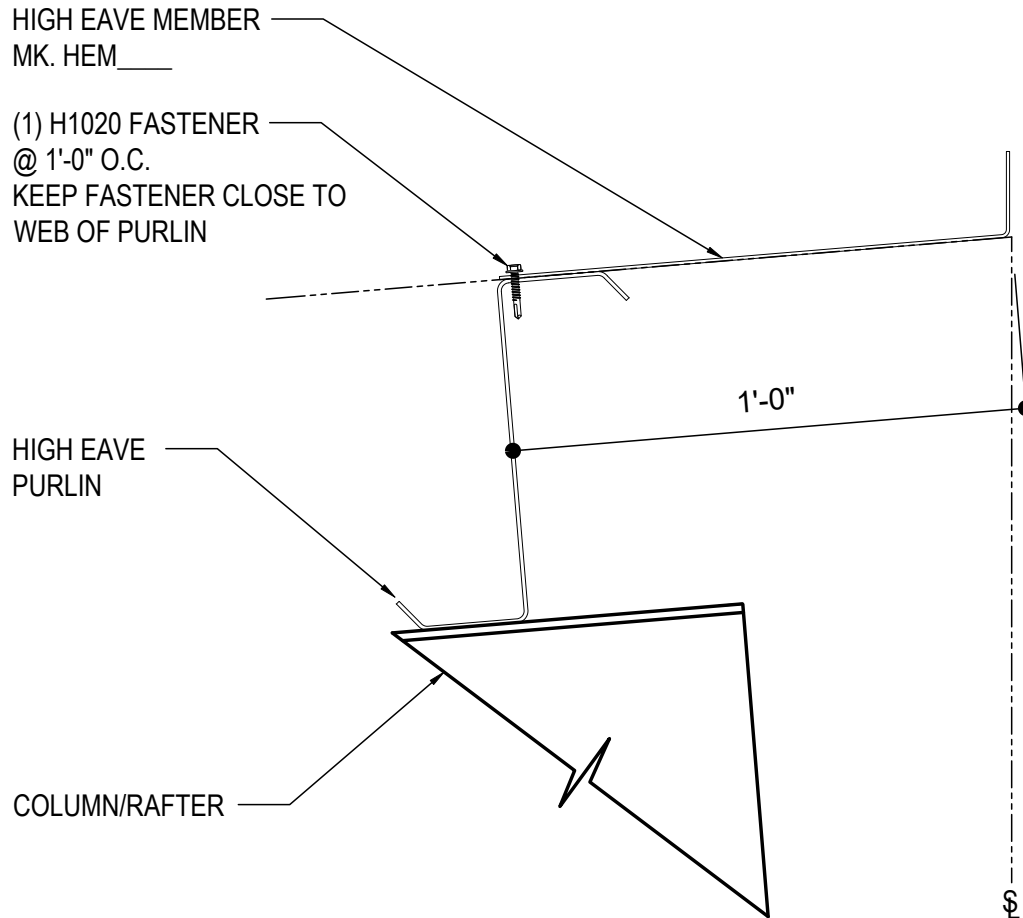
**BC0455**

Detailer Notes:

- 1) N/A

BC2000 - HIGH EAVE MEMBER FOR R-Boost™

[Download the DWG file by clicking here.](#)



## R-Boost™ HIGH EAVE MEMBER

HIGH EAVE MEMBER ATTACHMENT AT HIGH EAVE

**BC2000**

### Detailer Notes:

1) USE ONLY WITH R-Boost™ ROOF SYSTEMS AND SINGLE SLOPE BUILDING WITH SCULPTURED HIGH EAVE CONDITION. THE HIGH EAVE MEMBER IS TO BE INSTALLED AT TIME OF PURLIN INSTALLATION.